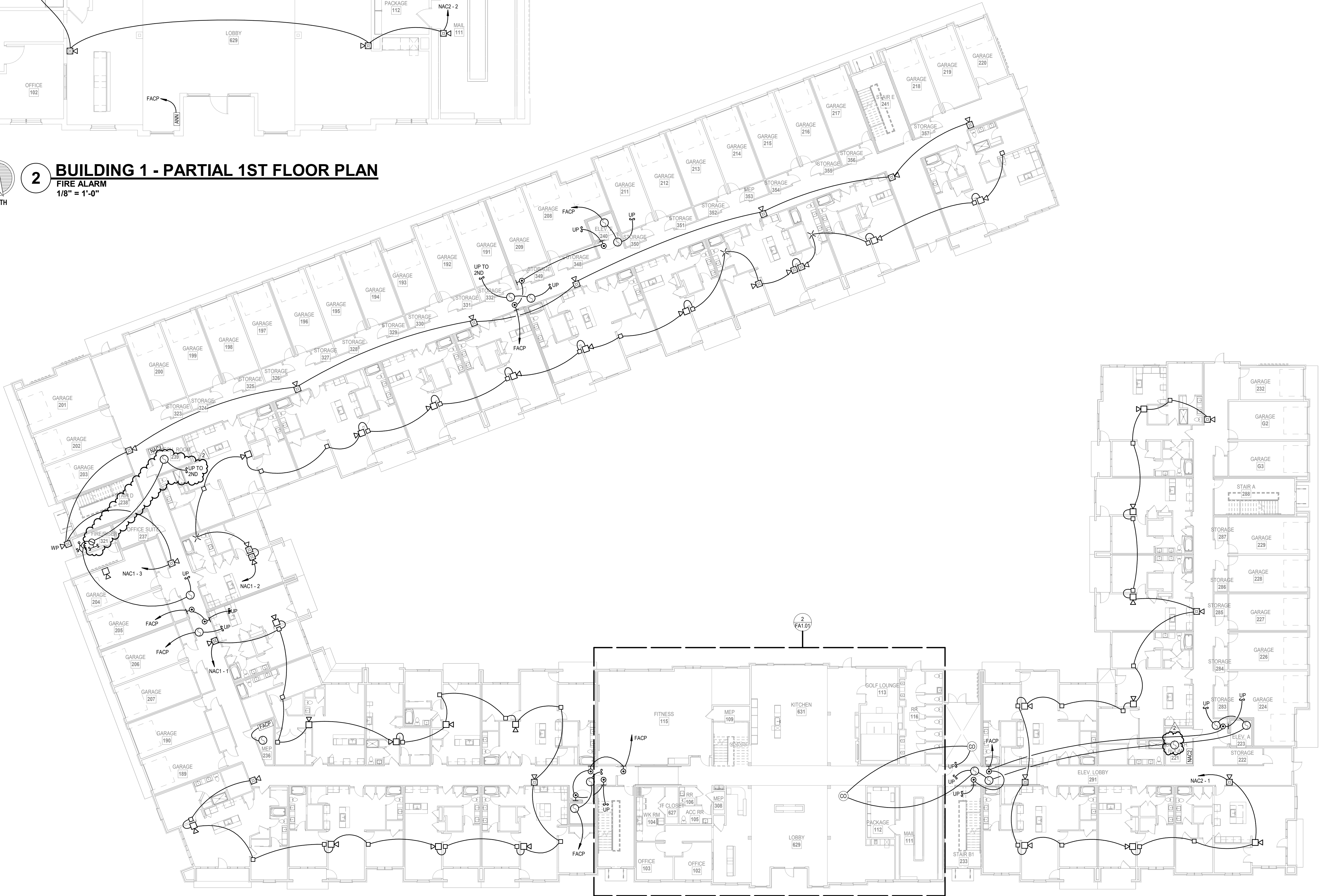


2 BUILDING 1 - PARTIAL 1ST FLOOR PLAN
FIRE ALARM
1/8" = 1'-0"



1 BUILDING 1 - OVERALL 1ST FLOOR PLAN
FIRE ALARM
1/16" = 1'-0"

NFPA SYMBOLS LEGEND	
FACP	FIRE ALARM CONTROL PANEL
PULL STATION	PULL STATION
SMOKE DETECTOR	SMOKE DETECTOR
WALL HORN ONLY	WALL HORN ONLY
HORN/STROBE WALL LOW FREQUENCY	HORN/STROBE WALL LOW FREQUENCY
W/ WP	OUTSIDE HORN/STROBE FOR WATER FLOW
STROBE ONLY	STROBE ONLY
1/2 x 1/2	FLOW DETECTOR/SWITCH
TAMPER DETECTOR	TAMPER DETECTOR
162 CABLE SLC LOOP	162 CABLE SLC LOOP
142 OR 162 AS REQUIRED, CABLE NAC LOOP	142 OR 162 AS REQUIRED, CABLE NAC LOOP
EOL	END-OF-LINE RESISTOR

* ALL SYMBOLS SHOWN ABOVE MAY NOT APPEAR ON PLANS

NOTES:

1. ALL FIRE ALARM WIRING MUST BE IN STRICT COMPLIANCE WITH APPLICABLE SECTIONS OF THE NATIONAL ELECTRICAL CODE (ARTICLE 760) AND ALL APPLICABLE NFPA STANDARDS, INCLUDING CHAPTER 12.
2. INSTALLATION MUST COMPLY WITH ALL APPLICABLE FEDERAL, STATE, OR LOCAL LAWS, REGULATIONS, CODES, AND SPECIFICATIONS.
3. ALL INSTALLATIONS MUST BE APPROVED BY THE LOCAL AUTHORITY HAVING JURISDICTION.
4. WHERE CONDUCTORS ARE RUN IN CONDUIT USE ONLY APPROVED CABLE WITHIN RACEWAYS, PIPES, OR CONDUITS. ALL SHIELDS SHALL TERMINATE AT THE FIRE ALARM CONTROL PANEL (FACP) ONLY.
5. TO AVOID CONTAMINATION AND DUST ACCUMULATION IN THE SMOKE DETECTORS, IT IS RECOMMENDED THAT THE SMOKE SMOKE DETECTORS NOT BE INSTALLED UNTIL AFTER CONSTRUCTION IS COMPLETED AND THE SUBJECT AREA HAS BEEN CLEANED. THE SUPPLIER IS NOT RESPONSIBLE FOR DUST ACCUMULATION IN SMOKE DETECTORS AND WILL NOT WARRANT DEVICES THAT HAVE NOT BEEN PROPERLY MAINTAINED. WHEN DETECTORS ARE INSTALLED, PROTECTIVE COVERS SHALL BE INSTALLED OVER EACH DETECTOR AND REMOVED BY AUTHORIZED SERVICE PERSONNEL.
6. ALL FIRE ALARM SYSTEM WIRING SHALL BE CLEAR FROM SHORTS, OPENS, AND GROUNDS. A SMOKE DETECTOR MUST BE LOCATED WITHIN FIVE FEET HORIZONTALLY OF THE FIRE ALARM CONTROL PANEL.
7. DO NOT LOCATE SMOKE DETECTORS WITHIN THREE FEET OF SUPPLY AIR VENTS. SMOKE DETECTORS SHALL BE LOCATED ON THE CEILING, NOT LESS THAN 4 INCHES FROM SIDEWALL.
8. SIGNALING CIRCUIT WIRE RUNS ARE CRITICAL. ANY INCREASE IN LENGTH OF WIRE MAY AFFECT CIRCUIT CONFIGURATIONS.
9. MANUAL PULL STATIONS SHOULD BE 48 INCHES ABOVE THE FINISHED FLOOR IN ACCORDANCE WITH NFPA 720 GUIDELINES.
10. HORNS WILL REMAIN ON UNTIL SILENCED AND STROBES WILL REMAIN UNTIL ALARM IS RESET.
11. SYSTEM IS AN ADDRESSABLE SUPERVISED PROTECTED PREMISES SYSTEM.
12. SEE APARTMENT PLANS FOR SMOKE/CO DETECTION WITHIN UNITS.
13. ALL DEVICES SHALL BE VISIBLE IN TYPE A - ACCESSIBLE UNITS.
14. CAPABILITY OF FUTURE ADDITIONS SHALL BE PROVIDED VIA BLANK BOXES IN BEDROOMS AS SHOWN AND WIRE SIZES WITH SPARE CAPACITY. ALSO, REMOTE-WIRELESS UNITS CAN BE PROVIDED.
15. THIS SYSTEM COMPLIES WITH THE APPLICABLE SECTIONS OF ASME AND ANSI AS DICTATED BY THE DIVISION OF MISSOURI FIRE SAFETY. ELEVATOR SAFETY UNIT. ELEVATORS WILL COMPLY WITH ASME A17.1-2015 EDITION.

A NEW RESIDENTIAL COMMUNITY AT:

TRILOGY

DRAWING RELEASE LOG
03.15.2023 - PERMIT SUBMITTAL

REVISIONS
1 04/02/2024 City Response
2 04/12/2024 City Response

JOB NO. 705921 DATE 03.15.2023
DRAWN BY Author
9/15/2023

SHEET NAME
BUILDING 1 OVERALL FIRST
FLOOR PLAN
SHEET NO.

FA1.01

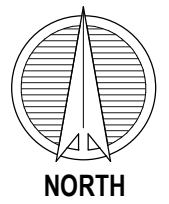
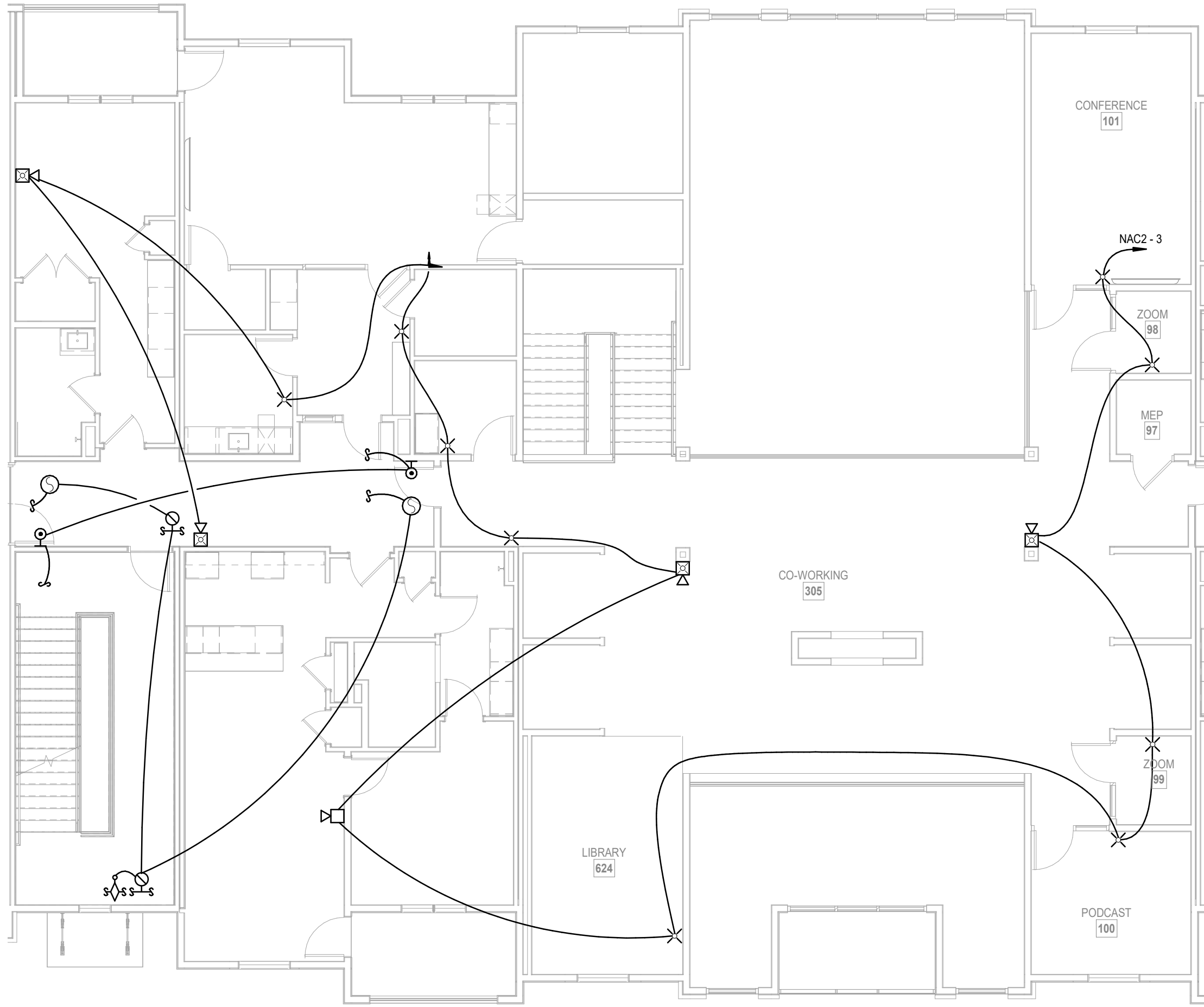
LS&A
Consulting Engineers & Associates P.A.
3939 SW Sumnerfield Drive, Suite A
Topeka, Kansas 66619-3974
6625 College Boulevard, Suite 102
Overland Park, Kansas 66210
Telephone: (785) 233-3332
Email: lsand@lsand.com
LSA PROJECT NO. 2204061

ARCHITECTURE
LANDSCAPE
ARCHITECTURE
ENERGY SERVICES
P. 913.831.1415
F. 913.831.1563
NSPIARCH.COM
PRAIRIE VILLAGE, KS 66208
© COPYRIGHT 2023

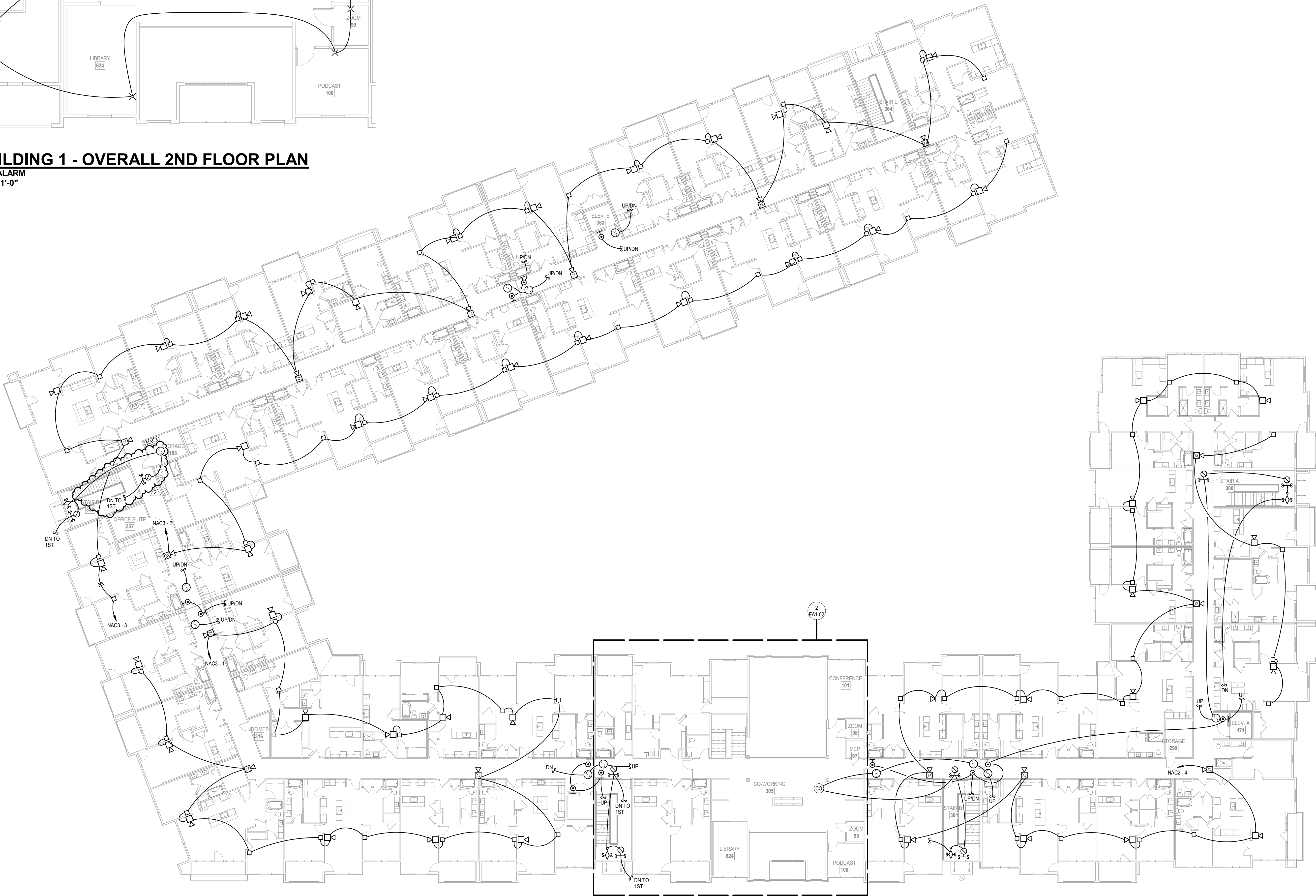
NSPJ
ARCHITECTS



04/12/2024



2 BUILDING 1 - OVERALL 2ND FLOOR PLAN
FIRE ALARM
1/8" = 1'-0"



1 BUILDING 1 - OVERALL 2ND FLOOR PLAN
FIRE ALARM
1/16" = 1'-0"

NFPA SYMBOLS LEGEND	
[FCP]	FIRE ALARM CONTROL PANEL
[SD]	PULL STATION
[SD]	SMOKE DETECTOR
[WH]	WALL HORN ONLY
[HWF]	HORN/STROBE WALL LOW FREQUENCY
[HWF]	OUTSIDE HORN/STROBE FOR WATER FLOW
[STROBE]	STROBE ONLY
[FDS]	FLOW DETECTOR/SWITCH
[TAMPER]	TAMPER DETECTOR
[SLC]	182 CABLE SLC LOOP
[SLC]	142 OR 162 AS REQUIRED, CABLE NAC LOOP
[EDL]	END-OF-LINE RESISTOR
* ALL SYMBOLS SHOWN ABOVE MAY NOT APPEAR ON PLANS	

- NOTES:
- ALL FIRE ALARM WIRING MUST BE IN STRICT COMPLIANCE WITH APPLICABLE SECTIONS OF THE NATIONAL ELECTRICAL CODE (ARTICLE 760) AND ALL APPLICABLE NFPA STANDARDS, INCLUDING CHAPTER 12.
 - INSTALLATION MUST COMPLY WITH ALL APPLICABLE FEDERAL, STATE, OR LOCAL LAWS, REGULATIONS, CODES, AND SPECIFICATIONS.
 - ALL INSTALLATIONS MUST BE APPROVED BY THE LOCAL AUTHORITY HAVING JURISDICTION.
 - WHERE CONDUCTORS ARE RUN IN CONDUIT USE ONLY APPROVED CABLE WITHIN RACEWAYS, PIPES, OR CONDUITS. ALL SHIELDS SHALL TERMINATE AT THE FIRE ALARM CONTROL PANEL (FACP) ONLY.
 - TO AVOID CONTAMINATION AND DUST ACCUMULATION IN THE SMOKE DETECTORS, IT IS RECOMMENDED THAT THE SMOKE SMOKE DETECTORS NOT BE INSTALLED UNTIL AFTER CONSTRUCTION IS COMPLETED AND THE SUBJECT AREA HAS BEEN CLEANED. THE SUPPLIER IS NOT RESPONSIBLE FOR DUST ACCUMULATION IN SMOKE DETECTORS AND WILL NOT WARRANT DEVICES THAT HAVE NOT BEEN PROPERLY MAINTAINED. WHEN DETECTORS ARE INSTALLED, PROTECTIVE COVERS SHALL BE INSTALLED OVER EACH DETECTOR AND REMOVED BY AUTHORIZED SERVICE PERSONNEL.
 - ALL FIRE ALARM SYSTEM WIRING SHALL BE CLEAR FROM SHORTS, OPENS, AND GROUNDS. A SMOKE DETECTOR MUST BE LOCATED WITHIN FIVE FEET HORIZONTALLY OF THE FIRE ALARM CONTROL PANEL.
 - DO NOT LOCATE SMOKE DETECTORS WITHIN THREE FEET OF SUPPLY AIR VENTS. SMOKE DETECTORS SHALL BE LOCATED ON THE CEILING NOT LESS THAN 4 INCHES FROM SIDEWALL.
 - SIGNALING CIRCUIT WIRE RUNS ARE CRITICAL. ANY INCREASE IN LENGTH OF WIRE MAY AFFECT CIRCUIT CONFIGURATIONS.
 - MANUAL PULL STATIONS SHOULD BE 48 INCHES ABOVE THE FINISHED FLOOR IN ACCORDANCE WITH NFPA 720 GUIDELINES.
 - HORNS WILL REMAIN ON UNTIL SILENCED AND STROBES WILL REMAIN UNTIL ALARM IS RESET.
 - SYSTEM IS AN ADDRESSABLE SUPERVISED PROTECTED PREMISES SYSTEM.
 - SEE APARTMENT PLANS FOR SMOKE/CO DETECTION WITHIN UNITS.
 - ALL DEVICES SHALL BE VISIBLE IN TYPE A - ACCESSIBLE UNITS.
 - CAPABILITY OF FUTURE ADDITIONS SHALL BE PROVIDED VIA BLANK BOXES IN BEDROOMS AS SHOWN AND WIRE SIZES WITH SIGNAL CAPACITY. ALSO REMOTE-WIRELESS UNITS CAN BE PROVIDED.
 - THIS SYSTEM COMPLIES WITH THE APPLICABLE SECTIONS OF ASME AND ANSIS DICTATED BY THE DIVISION OF MISSOURI FIRE SAFETY. ELEVATOR SAFETY UNIT. ELEVATORS WILL COMPLY WITH ASME A17.1 2015 EDITION.

A NEW RESIDENTIAL COMMUNITY AT:

TRILogy

DRAWING RELEASE LOG
03.15.2023 - PERMIT SUBMITTAL

REVISIONS		
1	04/02/2024	City Response
2	04/12/2024	City Response

JOB NO. **705921** DATE **03.15.2023**
DRAWN BY **Author**
9/15/2023

SHEET NAME
**BUILDING 1 OVERALL
SECOND FLOOR PLAN**
SHEET NO.

FA1.02

LS&A
Consulting Engineers & Associates P.A.
3939 SW Summerfield Drive, Suite A
Topeka, Kansas 66619-3974
6625 College Boulevard, Suite 102
Overland Park, Kansas 66210
Telephone: (785) 233-3332
Email: lsaa@lsaa.com
LSA PROJECT NO. 2204061

ARCHITECTURE
LANDSCAPE
ARCHITECTURE
ENERGY SERVICES
P. 913.831.1415
F. 913.831.1563
NSPIARCH.COM
© COPYRIGHT 2023

NSPJ
ARCHITECTS
3515 W. 75TH ST., SUITE 201
PRAIRIE VILLAGE, KS 66208

04/12/2024



BUILD
FIRE ALARM
1/16" = 1'-0"

NOTES:

1. ALL FIRE ALARM WIRING MUST BE IN STRICT COMPLIANCE WITH APPLICABLE SECTIONS OF THE NATIONAL ELECTRICAL CODE (ARTICLE 760) AND ALL APPLICABLE NFPA STANDARDS, INCLUDING CHAPTER 72.
2. INSTALLATION MUST COMPLY WITH ALL APPLICABLE FEDERAL, STATE, OR LOCAL LAWS, REGULATIONS, CODES, AND SPECIFICATIONS.
3. ALL INSTALLATIONS MUST BE APPROVED BY THE LOCAL AUTHORITY HAVING JURISDICTION.
4. WHERE CONDUITS ARE RUN IN CONDUIT USE ONLY APPROVED CABLE WITH RAINWATER, PIPES, OR CORROSION. ALL SHIELDS SHALL TERMINATE AT THE FIRE ALARM CONTROL PANEL (FACP) ONLY.
5. TO AVOID CONTAMINATION AND DUST ACCUMULATION IN THE SMOKE DETECTOR, THE DETECTOR IS RECOMMENDED TO BE INSTALLED IN THE SMOKE DETECTOR IS NOT BE INSTALLED UNTIL, AFTER CONSTRUCTION IS COMPLETED AND THE SUBJECT AREA HAS BEEN CLEANED. THE SUPPLIER IS NOT RESPONSIBLE FOR DUST ACCUMULATION IN SMOKE DETECTORS AND WILL NOT WARRANT DEVICES THAT HAVE NOT BEEN PROPERLY MAINTAINED, WHEN DETECTORS ARE INSTALLED. PROTECTIVE COVERS SHALL BE INSTALLED OVER EACH DETECTOR AND REMOVED BY AUTHORIZED SERVICE PERSONNEL.
6. ALL FIRE ALARM SYSTEM WIRING SHALL BE CLEAR FROM SHORTS, OPENES, AND SHALL BE A MINIMUM OF 6" ABOVE DETECTOR AND BE LOCATED WITHIN FEET HORIZONTALLY OF THE FIRE ALARM CONTROL PANEL.
7. DO NOT LOCATE SMOKE DETECTORS WITHIN THREE FEET OF SUPPLY AIR VENTS. SMOKE DETECTORS SHALL BE LOCATED ON THE CEILING NOT LESS THAN 4" AWAY FROM SIDEWALL.
8. SIGNALING CIRCUIT WIRE RUNS ARE CRITICAL. ANY CHANGE IN LENGTH OF WIRE MAY AFFECT CIRCUIT CONFIGURATION.
9. MANUAL PULL STATIONS SHOULD BE 4" INCHES ABOVE THE FINISHED FLOOR IN COMPLIANCE WITH NFPA/ADA GUIDELINES.
10. HORN'S WILL REMAIN ON UNTIL AUTHORIZED STROBES WILL REMAIN UNTIL ALARM IS RESET.
11. SYSTEM IS AN ADDRESSABLE SUPERVISORED PROTECTED PREMISES SYSTEM.
12. SEE APPOINTMENT PLANS FOR SMOKE/DETECTIVE DETECTION UNITS.
13. ALL DEVICES SHALL BE USIBLE IN TYPE A - ACCESSIBLE UNITS.
14. CAPABILITY OF VOLUME ADJUSTION SHALL BE PROVIDED VIA BALK BONES IN BEDROOMS AS SHOWN AND WIRE SIZES WITH SPARE CAPACITY. ALSO REMOVE WIRELESS UNITS CAN BE PROVIDED.
15. THIS SYSTEM COMPLIES WITH THE APPLICABLE SECTIONS OF ASME AND AS IS INDICATED BY THE DISCREPANCY WITH THE APPLICABLE SAFETY ELEVATOR GATEWAY REGULATIONS WILL COMPLY WITH THE APPLICABLE SAFETY ELEVATOR GATEWAY REGULATIONS.

A NEW RESIDENTIAL COMMUNITY AT:

TRILOGY

800 & 810 NW WARD RD. | LEE'S SUMMIT, MO

△ REVISIONS		
1	04/02/2024	City Response
2	04/12/2024	City Response

JOB NO. **705921** DATE **03.15.2023**
DRAWN BY **Author**
9/15/2023

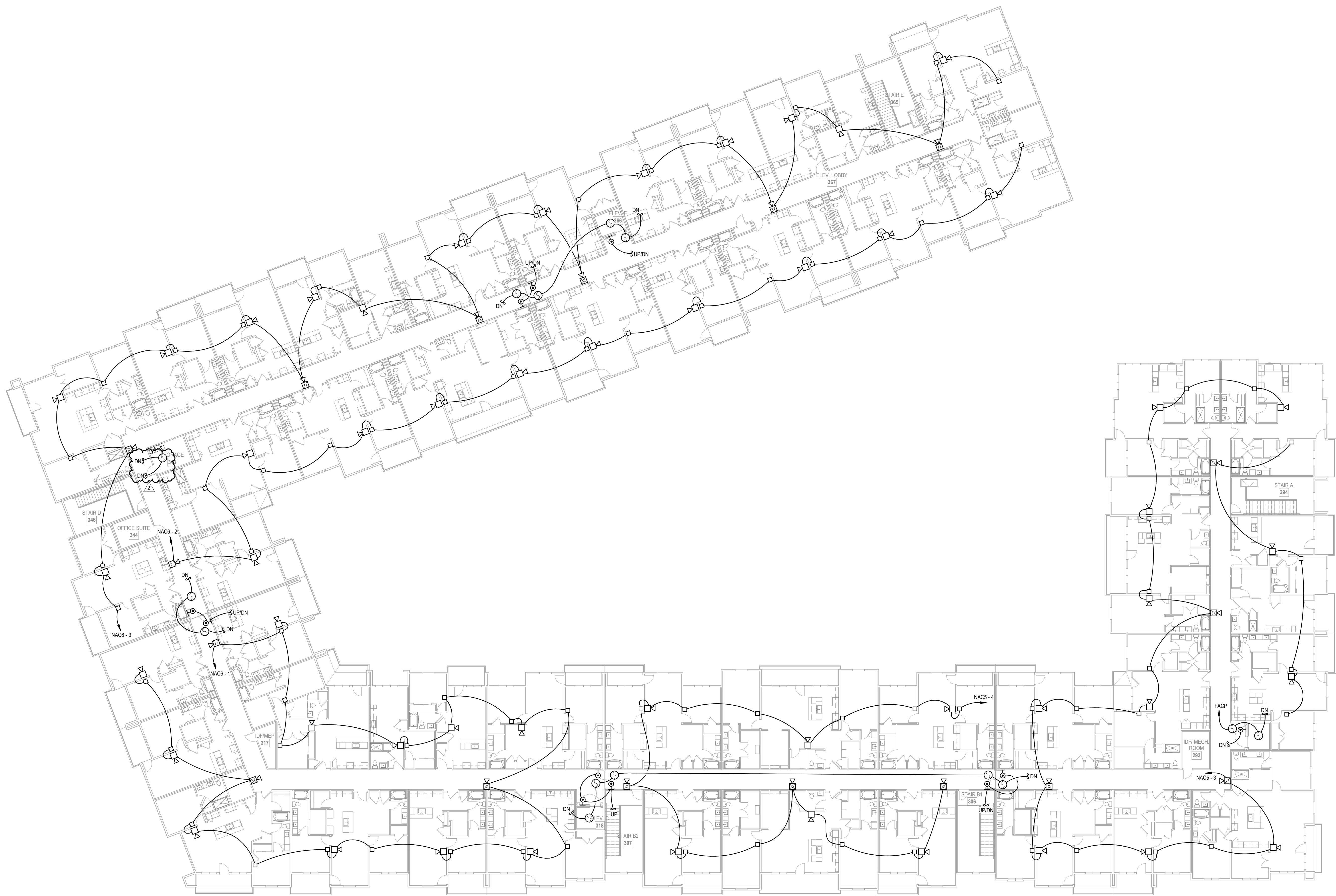
SHEET NAME
**BUILDING 1 OVERALL
THIRD FLOOR PLAN**
SHEET NO.

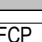

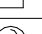

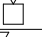
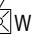

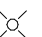

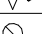
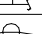
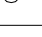
FA1.03

LS&A
Latimer Sommer
& Associates P.A.
CONSULTING ENGINEERS
3639 SW Summerfield Drive, Suite A
Topeka, Kansas 6614-3974
8625 College Boulevard, Suite 102
Overland Park, Kansas 66210
Telephone: (785) 233-3232
Email: lsapa@lsapa.com
LSA PROJECT NO. 2204061



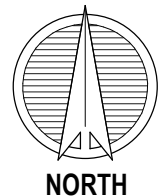
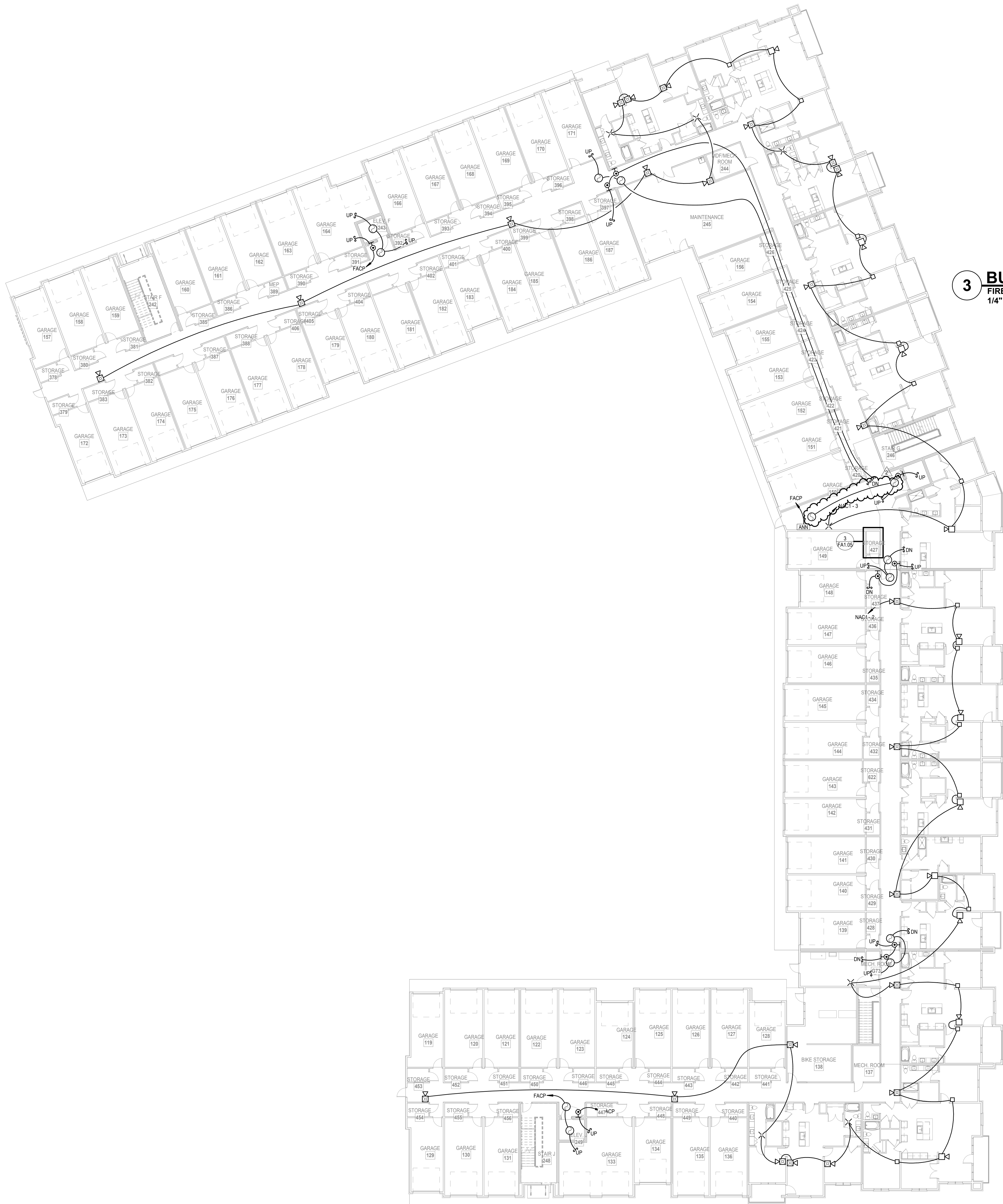
04/12/2024



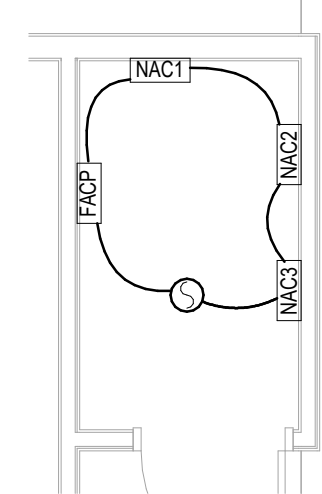
NFPA SYMBOLS LEGEND	
	FIRE ALARM CONTROL PANEL
	PULL STATION
	SMOKE DETECTOR
	WALL HORN ONLY
	HORN/STROBE WALL LOW FREQUENCY
	OUTSIDE HORN/STROBE FOR WATER FLOW
	STROBE ONLY
	FLOW DETECTOR/SWITCH
	TAMPER DETECTOR
	162 CABLE ELC LOOP
	162 OR 162 AS REQUIRED, CABLE NAC LOOP
	END-OF-LINE RESISTOR
* ALL SYMBOLS SHOWN ABOVE MAY NOT APPEAR ON PLANS	

- # NOTES:
1. ALL FIRE ALARM WIRING MUST BE IN STRICT COMPLIANCE WITH APPLICABLE SECTIONS OF THE NATIONAL ELECTRICAL CODE (ARTICLE 760) AND ALL APPLICABLE NFPA STANDARDS, INCLUDING CHAPTER 17.
 2. INSTALLATION MUST COMPLY WITH ALL APPLICABLE FEDERAL, STATE, OR LOCAL LAWS, REGULATIONS, CODES, AND SPECIFICATIONS.
 3. ALL INSTALLATIONS MUST BE APPROVED BY THE LOCAL AUTHORITY HAVING JURISDICTION.
 4. WHERE CONDUCTORS ARE RUN IN CONDUIT USE ONLY THE APPROVED CABLE WITH RECESSED PIPES, OR CONDUITS, ALL SHEELS SHALL TERMINATE AT THE FIRE ALARM CONTROL PANEL (FACP) ONLY.
 5. TO AVOID CONTAMINATION AND DUST ACCUMULATION IN THE SMOKE DETECTOR, IF IT IS COMBINATION SMOKE DETECTOR, THE SMOKE DETECTOR MUST NOT BE INSTALLED UNTIL AFTER CONSTRUCTION IS COMPLETED AND THE SUBJECT AREA HAS BEEN CLEANED. THE SUPPLIER IS NOT RESPONSIBLE FOR EXISTING ACCUMULATION IN SMOKE DETECTORS AND WILL NOT WARRANTIES DEVICES THAT HAVE NOT BEEN PROPERLY MAINTAINED. WHEN DETECTORS ARE INSTALLED, PROTECTIVE COVERINGS SHALL BE INSTALLED OVER EACH DETECTOR AND REMOVED BY AUTHORIZED SERVICE PERSONNEL.
 6. ALL FIRE ALARM SYSTEM WIRING SHALL BE CLEAR FROM SHORTS, OPENS, AND GROUNDING. A SMOKE DETECTOR MUST BE LOCATED WITHIN FIVE FEET HORIZONTALLY OF THE FIRE ALARM CONTROL PANEL.
 7. DO NOT LOCATE SMOKE DETECTORS WITHIN THREE FEET OF SUPPLY AIR VENTS. SMOKE DETECTORS SHALL BE LOCATED ON THE CEILING NOT LESS THAN 4" AWAY FROM SIDEWALL.
 8. SIGNALING CIRCUIT WIRE RUNS ARE CRITICAL. ANY INCREASE IN LENGTH OF WIRE MAY AFFECT CIRCUIT CONFIGURATIONS.
 9. MANUAL PULL STATIONS SHOULD BE 48 INCHES ABOVE THE FINISHED FLOOR IN ACCORDANCE WITH NFPA720 GUIDELINES.
 10. WORKING WILL REMAIN ON UNTIL BELIEVED AND STROGES WILL REMAIN UNTIL ALARM IS RESET.
 11. SYSTEM IS AN ADDRESSABLE SENSORIZED PROTECTED PREMISES SYSTEM.
 12. SEE APARTMENT PLANS FOR SMOKE/CO DETECTION WITHIN UNITS.
 13. ALL DEVICES SHALL BE VISIBLE IN TYPE - ACCESSIBLE UNITS.
 14. CAPABILITY OF FUTURE ADDITIONS SHALL BE PROVIDED VIA BLANK BORDS IN BEDROOMS AS SHOWN AND WIRE SIZES WITH SPARE CAPACITY. ALSO REMOTE-WIRELESS UNITS CAN BE PROVIDED.
 15. THIS SYSTEM COMPLIES WITH THE APPLICABLE SECTIONS OF ASME AND ASHRAE 180/181 BY THE DIVISION OF SMOKE DETECTOR, ELEVATOR ALARM, AND ELEVATOR ESCAPE ROUTE DETECTION (ELEVATOR ALARM) 1201 DETECTION.

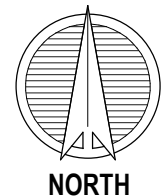
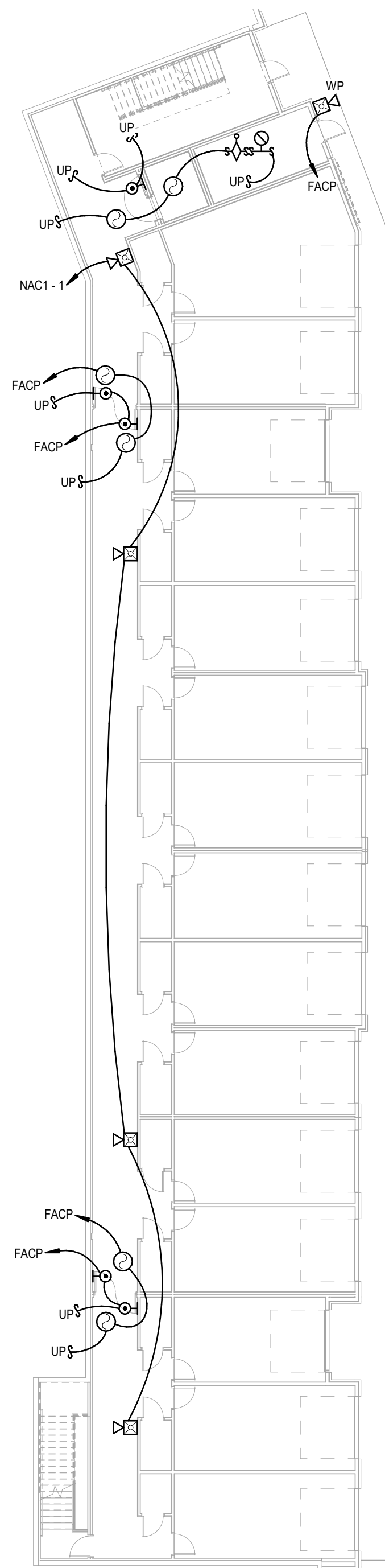
1 BUILDING 1 - OVERALL 4TH FLOOR PLAN
FIRE ALARM
1/16" = 1'-0"



1 BUILDING 2 - OVERALL 1ST FLOOR PLAN
FIRE ALARM
1/16" = 1'-0"



3 BUILDING 2 - OVERALL 1ST FLOOR PLAN - FIRE ALARM - Callout 1
FIRE ALARM
1/4" = 1'-0"



2 BUILDING 2 - OVERALL BASEMENT FLOOR PLAN
FIRE ALARM
1/16" = 1'-0"

NFPA SYMBOLS LEGEND	
[FACP]	FIRE ALARM CONTROL PANEL
[PULL STATION]	PULL STATION
[SMOKE DETECTOR]	SMOKE DETECTOR
[WALL HORN ONLY]	WALL HORN ONLY
[HORN/STROBE WALL LOW FREQUENCY]	HORN/STROBE WALL LOW FREQUENCY
[OUTSIDE HORN/STROBE FOR WATER FLOW]	OUTSIDE HORN/STROBE FOR WATER FLOW
[STROBE ONLY]	STROBE ONLY
[FLOW DETECTOR/SWITCH]	FLOW DETECTOR/SWITCH
[TAMPER DETECTOR]	TAMPER DETECTOR
[162 CABLE SLC LOOP]	162 CABLE SLC LOOP
[142 OR 162 AS REQUIRED, CABLE NAC LOOP]	142 OR 162 AS REQUIRED, CABLE NAC LOOP
[EOL]	END-OF-LINE RESISTOR

* ALL SYMBOLS SHOWN ABOVE MAY NOT APPEAR ON PLANS

NOTES:

1. ALL FIRE ALARM WIRING MUST BE IN STRICT COMPLIANCE WITH APPLICABLE SECTIONS OF THE NATIONAL ELECTRICAL CODE (ARTICLE 760) AND ALL APPLICABLE NFPA STANDARDS, INCLUDING CHAPTER 72.
2. INSTALLATION MUST COMPLY WITH ALL APPLICABLE FEDERAL, STATE, OR LOCAL LAWS, REGULATIONS, CODES, AND SPECIFICATIONS.
3. ALL INSTALLATIONS MUST BE APPROVED BY THE LOCAL AUTHORITY HAVING JURISDICTION.
4. WHERE CONDUCTORS ARE RUN IN CONDUIT USE ONLY APPROVED CABLE WITHIN RACEWAYS, PIPES, OR CONDUITS. ALL SHIELDS SHALL TERMINATE AT THE FIRE ALARM CONTROL PANEL (FACP) ONLY.
5. TO AVOID CONTAMINATION AND DUST ACCUMULATION IN THE SMOKE DETECTORS IT IS RECOMMENDED THAT THE SMOKE SMOKE DETECTORS NOT BE INSTALLED UNTIL AFTER CONSTRUCTION IS COMPLETED AND THE SUBJECT AREA HAS BEEN CLEANED. THE SUPPLIER IS NOT RESPONSIBLE FOR DUST ACCUMULATION IN SMOKE DETECTORS AND WILL NOT WARRANT DEVICES THAT HAVE NOT BEEN PROPERLY MAINTAINED. WHEN DETECTORS ARE INSTALLED, PROTECTIVE COVERS SHALL BE INSTALLED OVER EACH DETECTOR AND REMOVED BY AUTHORIZED SERVICE PERSONNEL.
6. ALL FIRE ALARM SYSTEM WIRING SHALL BE CLEAR FROM SHORTS, OPENS, AND GROUNDS. A SMOKE DETECTOR MUST BE LOCATED WITHIN FIVE FEET HORIZONTALLY OF THE FIRE ALARM CONTROL PANEL.
7. DO NOT LOCATE SMOKE DETECTORS WITHIN THREE FEET OF SUPPLY AIR VENTS. SMOKE DETECTORS SHALL BE LOCATED ON THE CEILING NOT LESS THAN 4 INCHES FROM SIDEWALL.
8. SIGNALING CIRCUIT WIRE RUNS ARE CRITICAL. ANY INCREASE IN LENGTH OF WIRE MAY AFFECT CIRCUIT CONFIGURATIONS.
9. MANUAL PULL STATIONS SHOULD BE 48 INCHES ABOVE THE FINISHED FLOOR IN ACCORDANCE WITH NFPA 720 GUIDELINES.
10. HORNS WILL REMAIN ON UNTIL SILENCED AND STROBES WILL REMAIN UNTIL ALARM IS RESET.
11. SYSTEM IS AN ADDRESSABLE SUPERVISED PROTECTED PREMISES SYSTEM.
12. SEE APARTMENT PLANS FOR SMOKE/CO DETECTION WITHIN UNITS.
13. ALL DEVICES SHALL BE VISIBLE IN TYPE A - ACCESSIBLE UNITS.
14. CAPABILITY OF FUTURE ADDITIONS SHALL BE PROVIDED VIA BLANK BOXES IN BEDROOMS AS SHOWN AND WIRE SIZES WITH SPARE CAPACITY. ALSO REMOTE-WIRELESS UNITS CAN BE PROVIDED.
15. THIS SYSTEM COMPLIES WITH THE APPLICABLE SECTIONS OF ASME AND ANSI AS DICTATED BY THE DIVISION OF MISSOURI FIRE SAFETY. ELEVATOR SAFETY UNIT. ELEVATORS WILL COMPLY WITH ASME A17.1 2019 EDITION.



04/12/2024

A NEW RESIDENTIAL COMMUNITY AT:

TRILogy

800 & 810 NW WARD RD. | LEE'S SUMMIT, MO

DRAWING RELEASE LOG
03.15.2023 - PERMIT SUBMITTAL

REVISIONS	
1	04/02/2024 City Response
2	04/12/2024 City Response

JOB NO. 705921
DATE 03.15.2023
DRAWN BY Author
9/15/2023

SHEET NAME
BUILDING 2 OVERALL FIRST
FLOOR PLAN
SHEET NO.

FA1.05