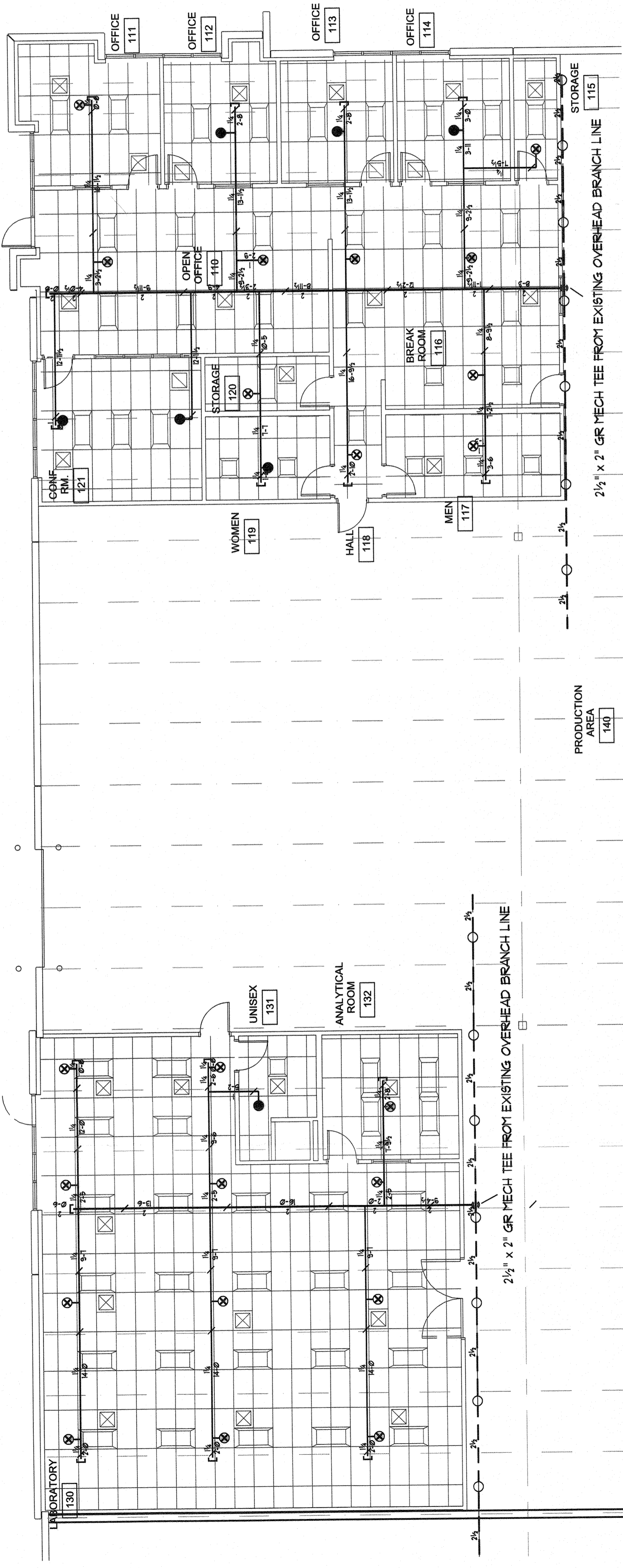


RELEASED FOR CONSTRUCTION
As Noted on Plan Review

Lee's Summit Fire Department
Lee's Summit, Missouri
04/08/2024



GENERAL NOTES

1. THE SYSTEM DESIGN CRITERIA COMPLIES WITH THE REQUIREMENTS OF NFPA 13 2016 EDITION.
2. ALL PIPING SHALL CONFORM WITH THE REQUIREMENTS OF NFPA 13 2016 EDITION.
3. ALL FITTINGS SHALL CONFORM WITH THE REQUIREMENTS OF NFPA 13 2016 EDITION.
4. ALL HANGERS SHALL CONFORM TO THE REQUIREMENTS OF NFPA 13 2016 EDITION.
5. FITTINGS FOR 1" THRU 2" SHALL BE CAST IRON THREADED. FITTINGS FOR 2 1/2" THRU 4" PIPING ARE TO BE GROOVED OR WELDED OUTLETS.
6. LENGTHS OF PIPING 1" THRU 2" ARE SHOWN AS THREAD TO THREAD UNLESS NOTED AS: G - GROOVE OR C - CENTER. 2 1/2" THRU 4" PIPE LENGTHS ARE SHOWN AS CENTER TO CENTER UNLESS NOTED AS: G - GROOVE, W - WELD, F - FACE OR FLANGE OR T - THREAD.

1. ALL SECTIONS OF TRAPPED PIPING SHALL HAVE AUXILIARY DRAINS WHERE REQUIRED.

2. THE OWNER SHALL BE RESPONSIBLE FOR PROVIDING ADEQUATE HEAT TO PREVENT THE PIPING FROM FREEZING.

3. ALL SWITCHBOARDS, PANEL BOARDS, DISTRIBUTION BOARDS AND MOTOR CONTROL CENTERS SHALL BE PROTECTED FROM DAMAGE BY OTHERS.

CONSTRUCTION: EXISTING CONSTRUCTION

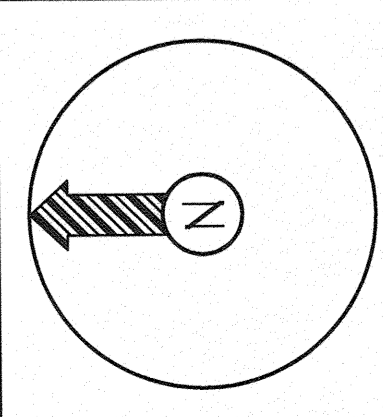
EXISTING PIPING

NEW PIPING

PIPE TYPE:
SCREWED 2" AND SMALLER TO BE SCH. 40 PIPE WELDED 2" AND LARGER TO BE SCH. 10 PIPE.

DESIGN CRITERIA:

PER NFPA 13, ORDINARY HAZARD GR 1.015 GPM/SGFT FOR 1500 SQFT. OPERATING
MAX 150 SQFT HEAD SPACING + 250 GPM FOR HOSE ALLOWANCE.
NOTE: REDUCE OPERATING AREA FOR QUICK RESPONSE SPRINKLER HEADS PER NFPA 13.
ALL SPRINKLERS TO BE QUICK RESPONSE TYPE, APPROVED FOR SPECIFIC OCCUPANCY.



Symbol	Description
○	Hydraulic Reference Points
⊖	Elev. Below Top of Steel
⊕	Elev. Above Finished Floor
+ rtes 0'-0"	Elev. of Top of Steel
⊙	Ceiling Height
○	Denotes Hanger Location
○	Rise up or down

ALL PIPE CUTS ARE CENTER TO CENTER

Sprinkler Head Summary										
Symbol	Count	NPT	Orif.	Make	Model	Finish	Style	Temp.	K=	SIN
○	22	3/4"	3/4"	VIKING	GRFC	CHROME	EXISTING ESFR PENDANT TO REMAIN	200°	112K	VK534
●	1	1/2"	1/2"	VIKING	MICROFAST	CHROME	GR PENDANT w/ CHR REC EBC	200°	5.6K	VK3071

NOTICE OF NONRESPONSIBILITY
THIS DRAWING SHALL BE USED AS A CONSTRUCTION DOCUMENT. ADVANTAGE FIRE PROTECTION SYSTEMS, INC. ASSUMES NO RESPONSIBILITY FOR UNAUTHORIZED USE OF THESE DRAWINGS. THE USE OF THIS DRAWING FOR STRUCTURAL OR ARCHITECTURAL PURPOSES IS NOT AUTHORIZED. THIS PRINT IS THE EXCLUSIVE PROPERTY OF:
ADVANTAGE FIRE PROTECTION SYSTEMS, INC.

SPIRITUS
2231 NW TOWN CENTRE BLVD.
LEE'S SUMMIT, MISSOURI 64064

ADVANTAGE
FIRE PROTECTION SYSTEMS INC.
"We are your Advantage"
404B N.W. 11th Street
Blue Springs, MO. 64015
Tel. (816) 224-3400

REVIEWING AUTHORITY	LEE'S SUMMIT FIRE DEPT
HEADS THIS SHEET	29
TOTAL HEADS FOR JOB	29
SCALE	1/8" = 1'-0"
DRAWN BY	MATT KNOX
REVISION DATE	
DATE DRAWN	3/21/24
CONTRACT NUMBER	J-2390
DRAWING NUMBER	1 OF 1

SITE PLAN
NO SCALE

TENANT FINISH PLAN

EXISTING OVERHEAD ESFR SPRINKLERS DESIGNED FOR 12 HEADS @ 50 PSI
NEW OFFICE PIPING FED FROM EXISTING OVERHEAD BRANCHLINES
LABORATORY ORDINARY HAZARD GR 1 - OFFICES LIGHT HAZARD
NO NEW CALCULATIONS PROVIDED

AREA OF WORK

