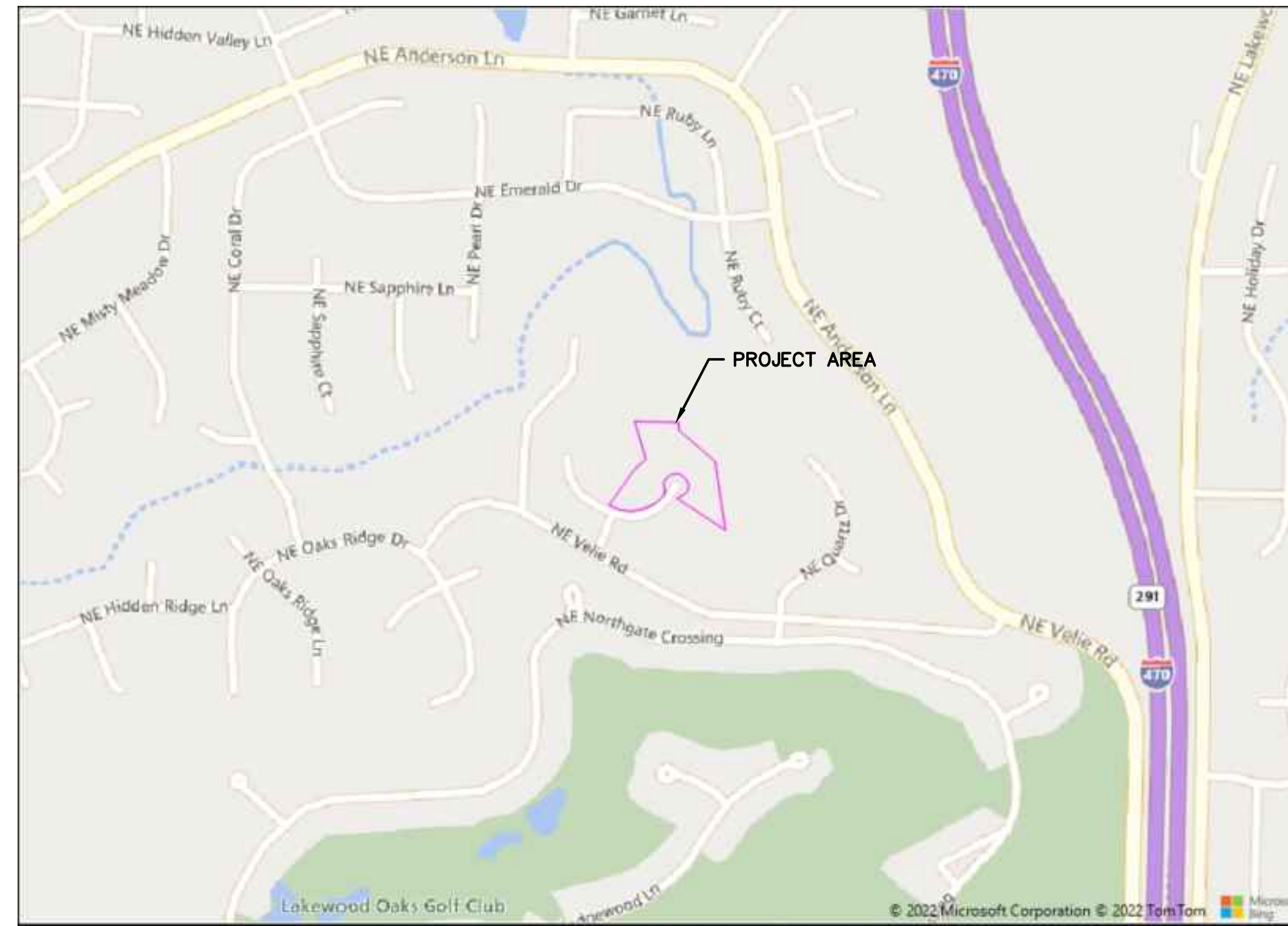
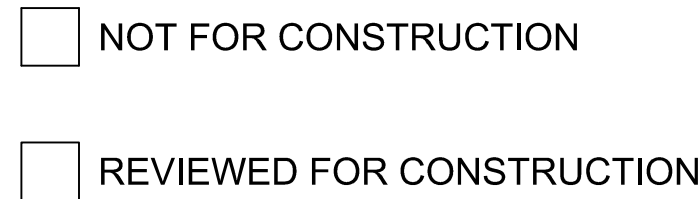
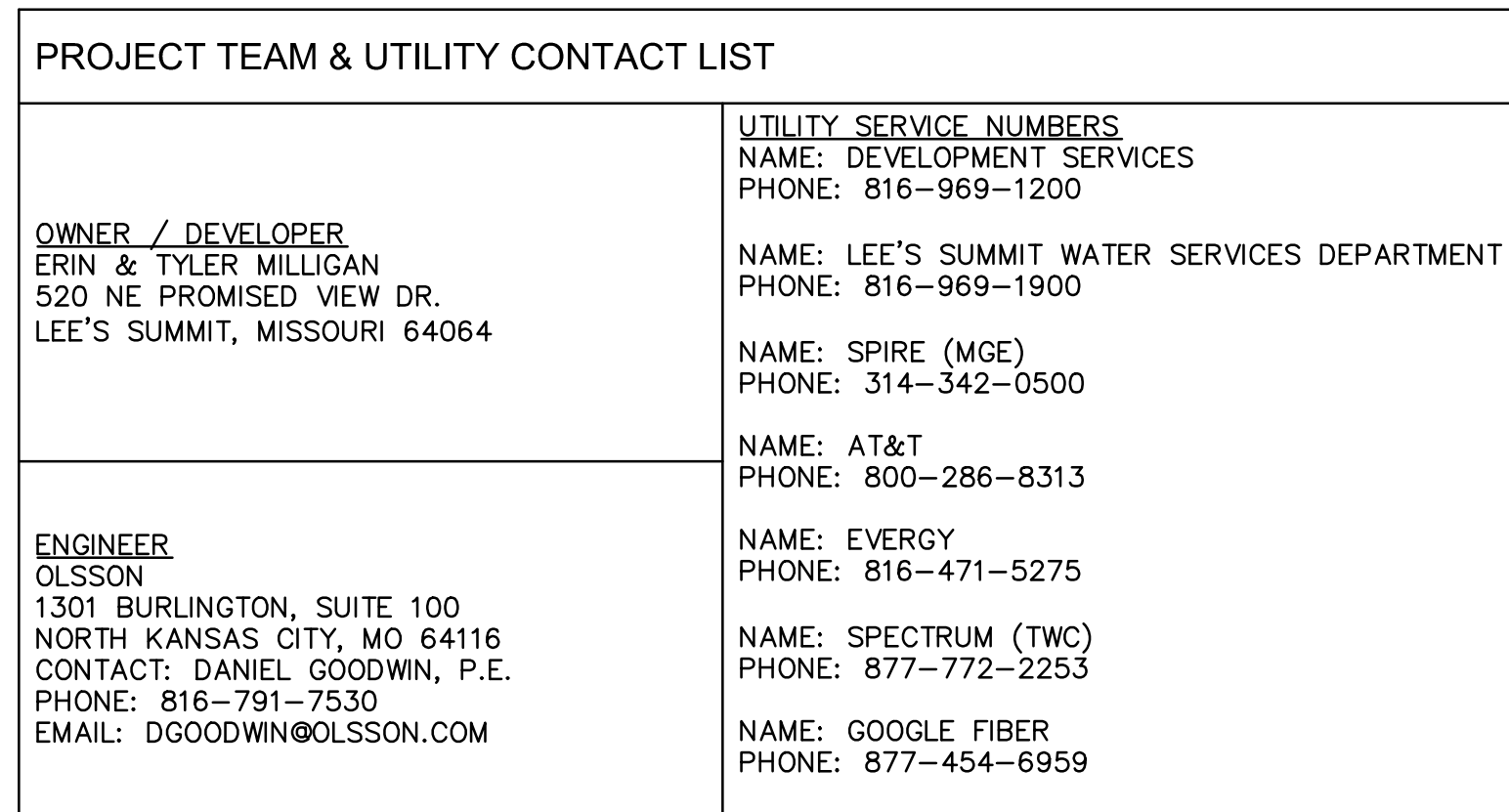


Map of the Project Site showing the intersection of NE Anderson Dr and Highway 32. The site is located in the SW 1/4 of the intersection. The map is divided into four quadrants: NW 1/4, NE 1/4, SW 1/4, and SE 1/4. The project site is indicated by a line pointing to the SW 1/4 quadrant.

VICINITY MAP
S 32, T 49 N, R 31 W
(N.T.S.)

INDEX OF SHEETS	
SHEET NAME	SHEET NUMBER
TITLE SHEET	C100
SITE PLAN	C101
DETAIL SHEET	C102

ESTIMATE OF QUANTITIES		
WATERLINE REMOVAL	LF	111.41
FIRE HYDRANT REMOVAL	EA.	1
FIRE HYDRANT	EA.	1
STRADDLE BLOCK	EA.	1



ALL OF LOT 5, TIFFANY WOODS, LOTS 1-13 AND TRACTS, A, B & C, A SUBDIVISION IN LEE'S SUMMIT, JACKSON COUNTY, MISSOURI

AND

ALL OF LOTS 3A & 4A TIFFANY WOODS, 2ND PLAT, LOTS 1A THRU 4A, LOTS 6A THRU 8A AND TRACTS A-1, B-1 AND C-1, A SUBDIVISION IN LEE'S SUMMIT, JACKSON COUNTY, MISSOURI.

PL2022265
PRSUBD20224472

RELEASED FOR CONSTRUCTION
As Noted on Plan Review

Development Services Department
Lee's Summit, Missouri

04/05/2024

CONTROL STATION
NORTH: N:1034478.705
EAST: 2829553.629
SCALE FACTOR 0.9999030

olson

[illegible]

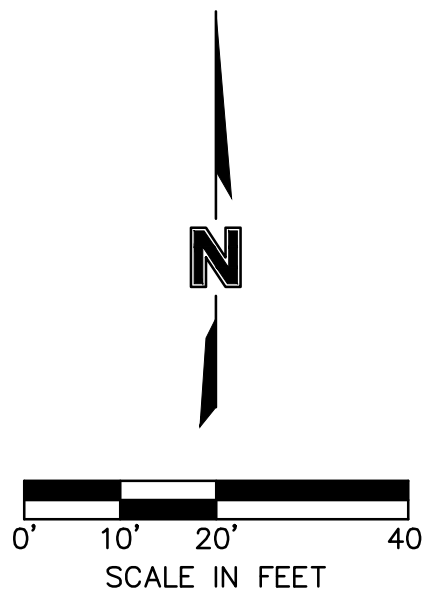
1375 SHEET

513 NE PROMISED VIEW DR PUBLIC FIRE HYDRANT REPLACEMENT

LEE'S SUMMIT, MO

Drawn by: BM/TW
 Checked by: DFG
 Approved by: DFG
 A/QC by: SMS
 Project no.: 022-03577
 Drawing no.: C100
 Date: 08.02.2022

SHEET
C100

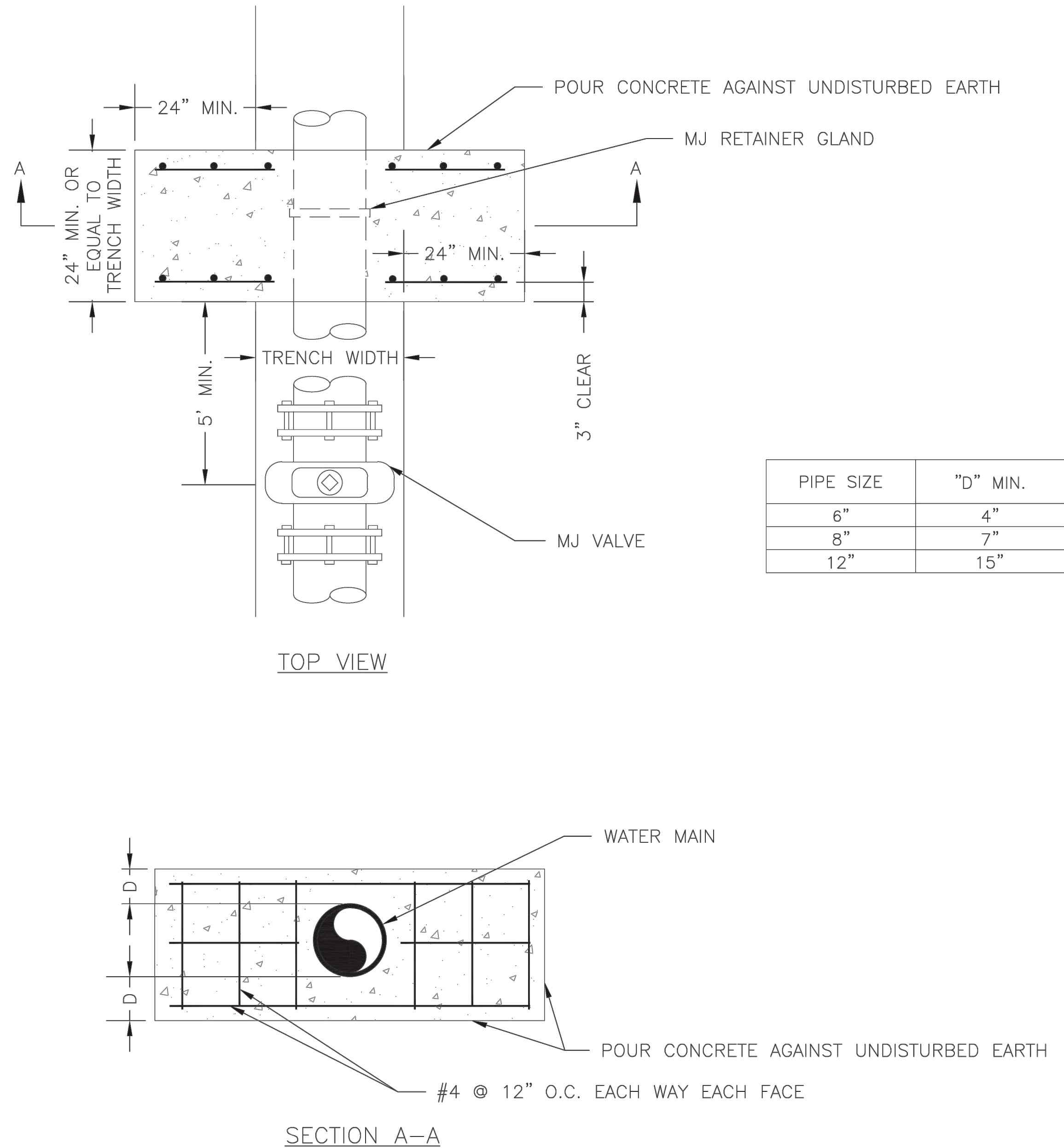


RELEASED FOR CONSTRUCTION
As Noted on Plan Review


Development Services Department
Lee's Summit, Missouri

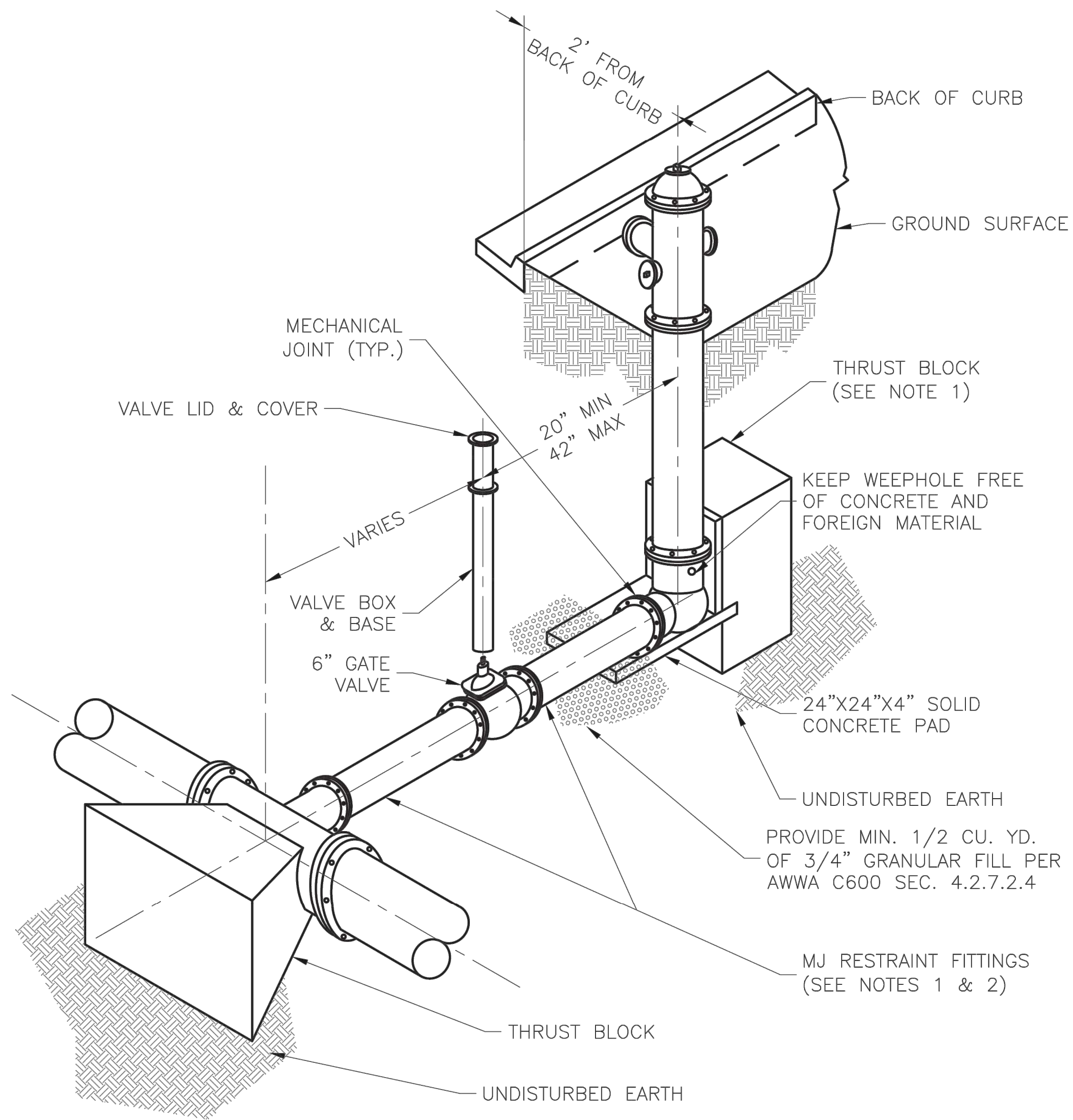
04/05/2024

DWG: F:\2022\03501-04000\022-03577\40-Design\AutoCAD\Final Plans\Sheets\GNCV\C-DTLO1_02203577.dwg
DATE: Aug 02, 2022 1:57pm
USER: dgoodwin
XREFS: C_XBASE_02203577



NOTE:
THIS DETAIL NOT TO BE USED FOR PIPE GREATER THAN 12"

	LEE'S SUMMIT MISSOURI PUBLIC WORKS ENGINEERING DIVISION 220 SE GREEN STREET LEE'S SUMMIT, MO 64063	Date: 01/2016 Drawn By: JN Checked By: DL
	STRADDLE BLOCK	WAT-3



NOTES:

1. WHEN RETAINER GLANDS ARE USED IN LIEU OF MECHANICAL JOINT (MJ) RESTRAINT FITTINGS, HORIZONTAL THRUST BLOCKS ARE REQUIRED.
2. GATE VALVE MAY BE BOLTED DIRECTLY TO MJ RESTRAINT TEE.
3. SEE APPROVED PRODUCTS LIST FOR WATER UTILITIES FOR FIRE HYDRANT, VALVES, VALVE BOX LID, AND COVER.
4. BOTTOM HYDRANT FLANGE SHALL BE 2" TO 6" ABOVE FINISHED GRADE.
5. FOR STREETS WITHOUT CURBS FIRE HYDRANTS SHALL BE PLACED WITHIN 1 FOOT OF THE R/W LINE, BUT NOT MORE THAN 10' FROM EDGE OF PAVEMENT. FIRE HYDRANT SHALL NOT BE PLACED IN BOTTOM OF DITCH.
6. HYDRANT SHALL BE ROTATED AS DIRECTED BY INSPECTOR.

	LEE'S SUMMIT MISSOURI PUBLIC WORKS ENGINEERING DIVISION 220 SE GREEN STREET LEE'S SUMMIT, MO 64063	Date: 01/2016 Drawn By: JN Checked By: DL
	HYDRANT - STRAIGHT SET	WAT-7

RELEASED FOR CONSTRUCTION
As Noted on Plan Review
Development Services Department
Lee's Summit, Missouri
04/05/2024



REV. NO.	DATE	REVISIONS DESCRIPTION	BY
03	08/02/2022		

DETAIL SHEET	513 PROMISED VIEW DR PUBLIC FIRE HYDRANT RELOCATION	2022
LEE'S SUMMIT, MO		

drawn by: BM/TW
checked by: DFG
approved by: DFG
QA/QC by: SMS
project no.: 022-03577
drawing no.: C100
date: 08/02/2022

SHEET
C102

olsson

Olsson - Civil Engineering
Missouri Certificate of Authority #001592
1301 Burlington Street
North Kansas City, MO 64116
TEL 816.361.1177
www.olson.com

REVISIONS