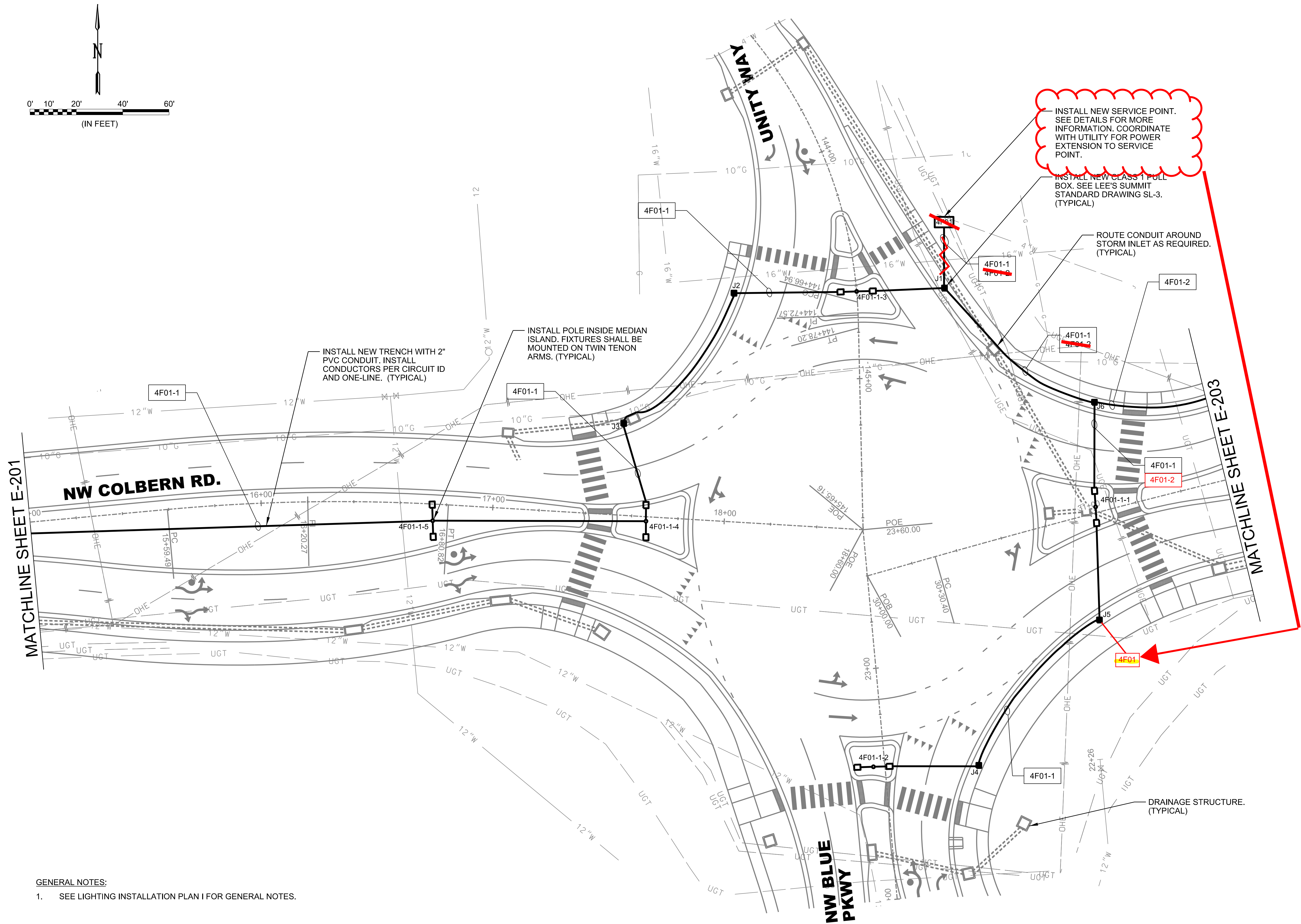


12/2/2022 10:35:04 AM  
WORKSPACE\Garver\_2012  
L:\2017\17177041 - Colbern Road Reconstruction\Drawings\CCR\_E202\_LP.dgn

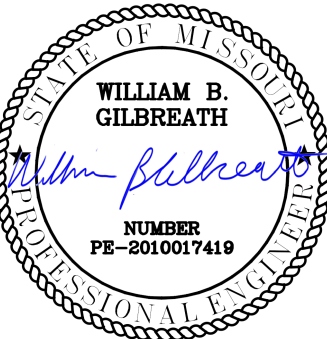


GENERAL NOTES:

1. SEE LIGHTING INSTALLATION PLAN I FOR GENERAL NOTES.



© 2022 GARVER, LLC  
THIS DOCUMENT, ALONG WITH THE  
IDEAS AND DESIGNS CONVEYED  
HEREIN, SHALL BE CONSIDERED  
INSTRUMENTS OF PROFESSIONAL  
SERVICE AND ARE PROPERTY OF  
GARVER, LLC. ANY USE,  
REPRODUCTION, OR DISTRIBUTION  
OF THIS DOCUMENT, ALONG WITH  
THE IDEAS AND DESIGN CONTAINED  
HEREIN, IS PROHIBITED UNLESS  
AUTHORIZED IN WRITING BY  
GARVER, LLC OR EXPLICITLY  
ALLOWED IN THE GOVERNING  
PROFESSIONAL SERVICES  
AGREEMENT FOR THIS WORK.



Digitally Signed 12/02/2022  
THIS SHEET HAS BEEN  
SIGNED, SEALED AND DATED  
ELECTRONICALLY

REV.	DATE	DESCRIPTION	BY



CITY OF  
LEE'S SUMMIT  
LEE'S SUMMIT, MISSOURI  
F.A.P. STP-3301(627)  
  
COLBERN ROAD  
RECONSTRUCTION

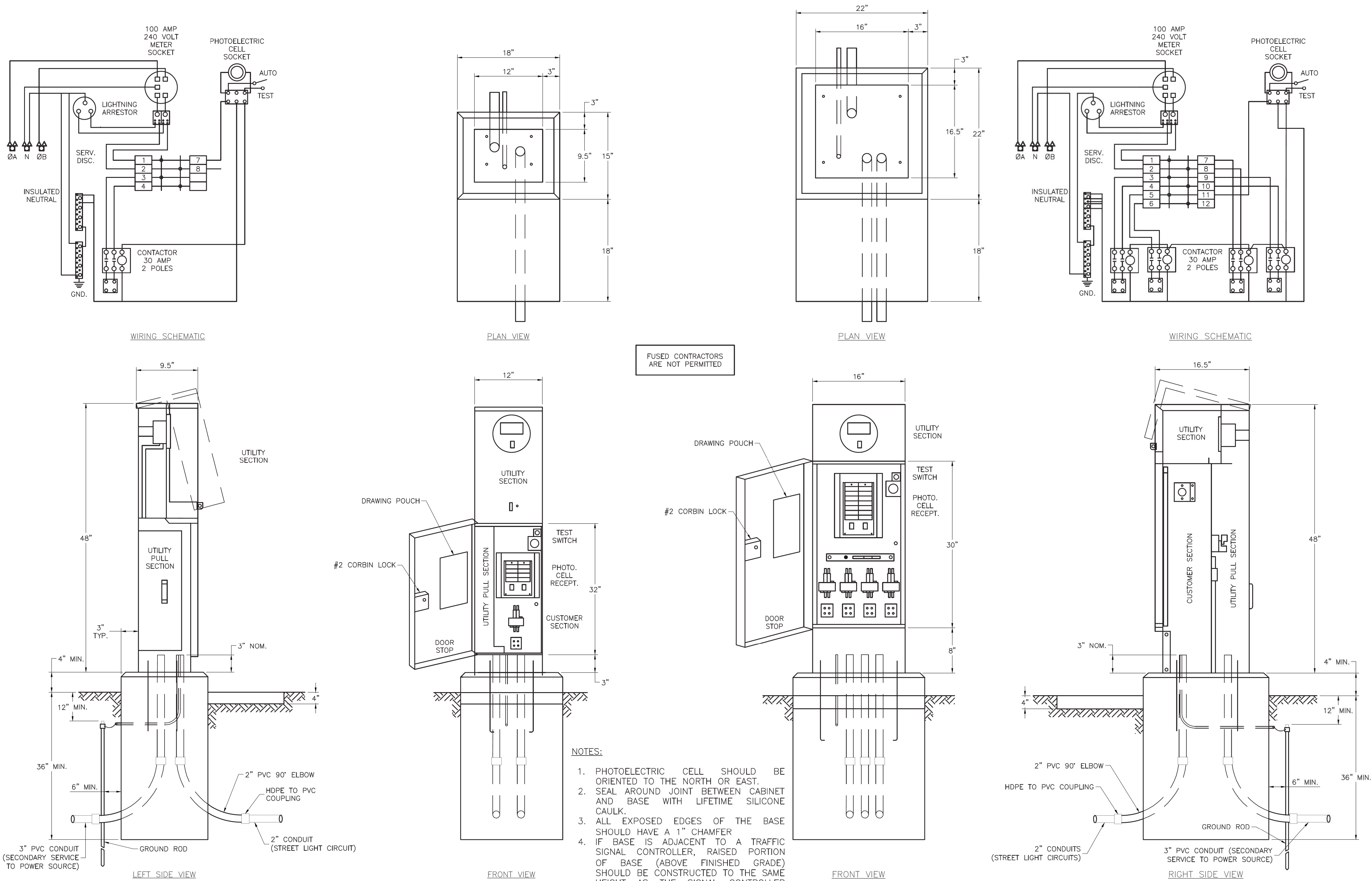
LIGHTING  
INSTALLATION PLAN II

JOB NO.: 17177041  
DATE: DEC. 2022  
DESIGNED BY: AKF  
DRAWN BY: AKF

BAR IS ONE INCH ON  
ORIGINAL DRAWING  
0 1" = 10' IF NOT ONE INCH ON THIS SHEET,  
ADJUST SCALES ACCORDINGLY.

DRAWING NUMBER  
**E-202**





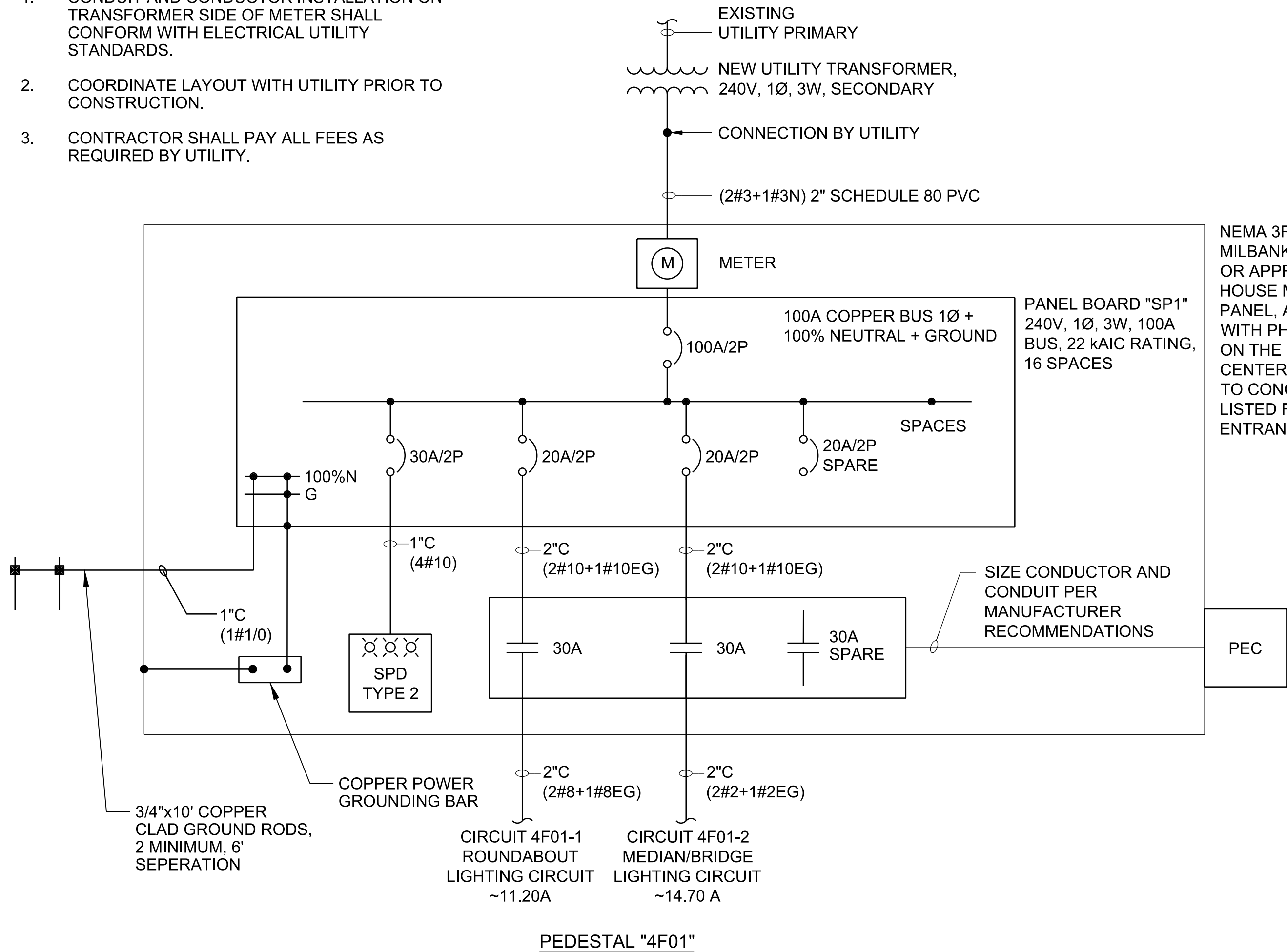
1 - CIRCUIT  
POWER SUPPLY

4 - CIRCUIT  
POWER SUPPLY



NOTES:

- CONDUIT AND CONDUCTOR INSTALLATION ON TRANSFORMER SIDE OF METER SHALL CONFORM WITH ELECTRICAL UTILITY STANDARDS.
- COORDINATE LAYOUT WITH UTILITY PRIOR TO CONSTRUCTION.
- CONTRACTOR SHALL PAY ALL FEES AS REQUIRED BY UTILITY.



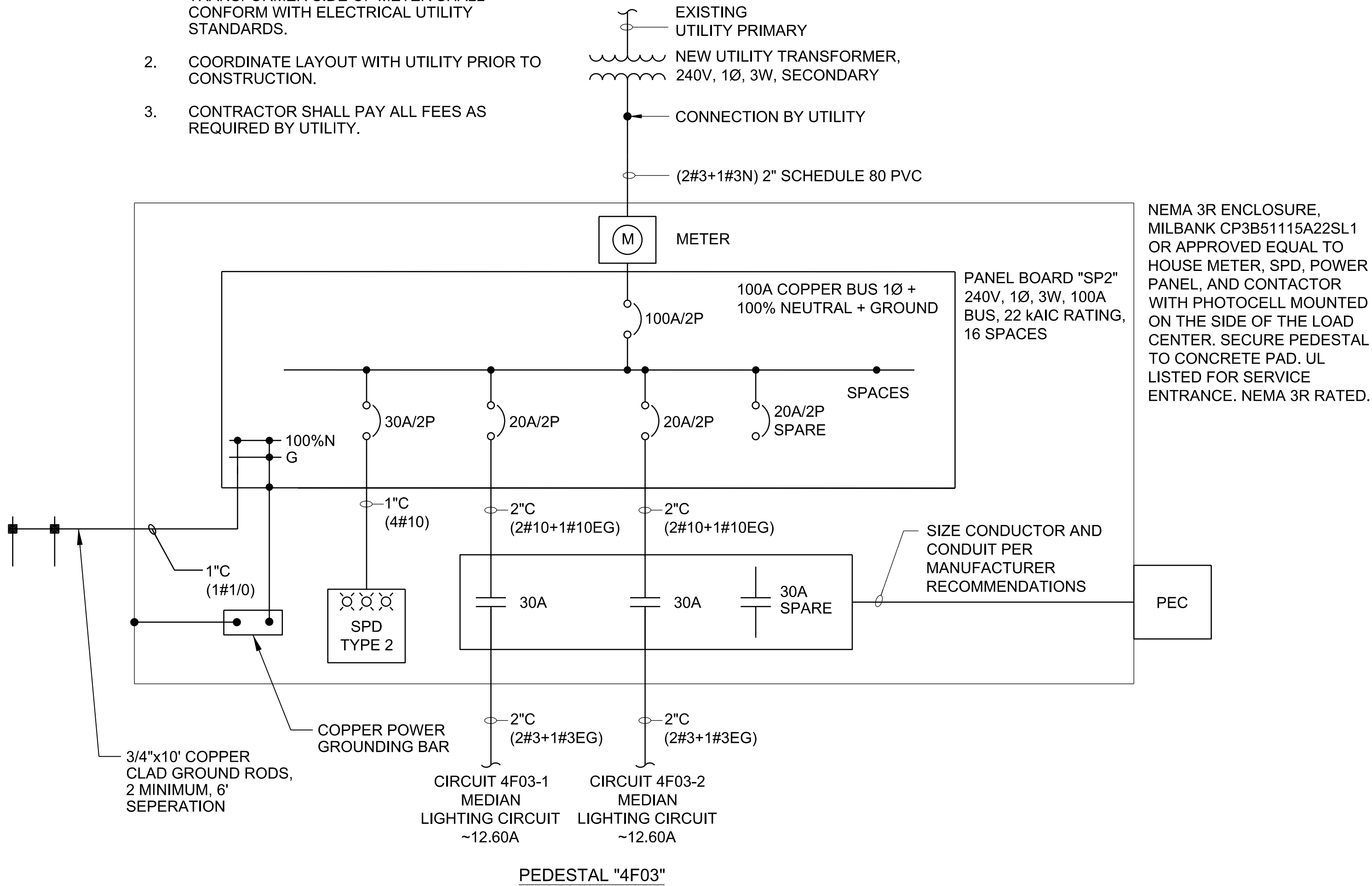
1 ONE-LINE DIAGRAM (4F01)  
E-301 SCALE: NONE

DIAGRAM NOTES:

- ELECTRICAL WORK SHALL BE PERFORMED IN ACCORDANCE WITH THE CURRENT EDITIONS OF THE NFPA 70 (2017) NATIONAL ELECTRICAL CODE, NFPA 101 (2018) LIFE SAFETY CODE, STATE ELECTRICAL CODE, AND LOCAL ELECTRICAL CODE.
- COORDINATE ELECTRICAL POWER SUPPLY WITH EQUIPMENT SUPPLIED.
- COORDINATE ALL ELECTRICAL WORK AND POWER OUTAGES WITH OWNER AND POWER UTILITY.
- WIRING SHALL BE MINIMUM TYPE THHN/THWN-2.
- EQUIPMENT SHORT CIRCUIT CURRENT RATINGS AND AVAILABLE INTERRUPTING CURRENT RATINGS SHALL BE FULLY RATED TO INTERRUPT SYMMETRICAL SHORT CIRCUIT CURRENT AVAILABLE AT TERMINALS. SERIES RATED SYSTEMS SHALL NOT BE USED.
- NEUTRAL BUSES SHALL BE COPPER 100% RATED UNLESS NOTED OTHERWISE.
- GROUND BUSES SHALL BE 100% COPPER UNLESS OTHERWISE NOTED.
- INSTALL AN EQUIPMENT GROUND GROUNDING CONDUCTOR IN ALL FEEDER AND BRANCH CIRCUITS.
- INSTALL ALL CONDUCTORS AND CABLES IN CONDUIT UNLESS NOTED OTHERWISE.
- INSTALL LUGS AND JUNCTION BOXES AS REQUIRED TO FIT WIRING.
- ALL WIRING SHALL BE COPPER.
- INSTALL NEW LAMINATED TYPED PANEL SCHEDULES IN ALL ELECTRICAL PANELS INDICATING WORK PERFORMED.
- INSTALL NEW PERMANENT LABELS ON PANELBOARDS INDICATING WORK PERFORMED.
- PEC SHALL BE INSTALLED TO FACE NORTH.
- POLE RISER CIRCUITS SHALL BE NO. 10 AWG COPPER.
- THE UTILITY POINT OF CONTACT IS JENNY CASEY, KCP&L, 816-347-4334

NOTES:

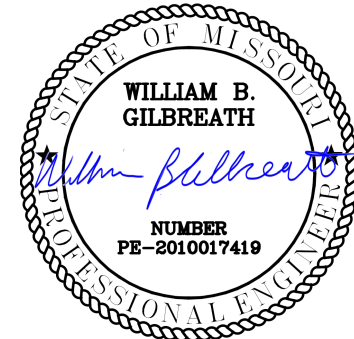
- CONDUIT AND CONDUCTOR INSTALLATION ON TRANSFORMER SIDE OF METER SHALL CONFORM WITH ELECTRICAL UTILITY STANDARDS.
- COORDINATE LAYOUT WITH UTILITY PRIOR TO CONSTRUCTION.
- CONTRACTOR SHALL PAY ALL FEES AS REQUIRED BY UTILITY.



2 ONE-LINE DIAGRAM (4F03)  
E-301 SCALE: NONE



© 2022 GARVER, LLC  
THIS DOCUMENT, ALONG WITH THE IDEAS AND DESIGNS CONVEYED HEREIN, SHALL BE CONSIDERED INSTRUMENTS OF PROFESSIONAL SERVICE AND ARE PROPERTY OF GARVER, LLC. ANY USE, REPRODUCTION, OR DISTRIBUTION OF THIS DOCUMENT, ALONG WITH THE IDEAS AND DESIGN CONTAINED HEREIN, IS PROHIBITED UNLESS AUTHORIZED IN WRITING BY GARVER, LLC OR EXPLICITLY ALLOWED IN THE GOVERNING PROFESSIONAL SERVICES AGREEMENT FOR THIS WORK.



Digitally Signed 12/02/2022  
THIS SHEET HAS BEEN SIGNED, SEALED AND DATED ELECTRONICALLY

BY	DESCRIPTION	DATE	REV.



CITY OF  
LEE'S SUMMIT  
LEE'S SUMMIT, MISSOURI  
F.A.P. STP-3301(627)

COLBERN ROAD  
RECONSTRUCTION

ELECTRICAL DETAILS I

JOB NO.: 17177041  
DATE: DEC. 2022  
DESIGNED BY: AKF  
DRAWN BY: AKF

BAR IS ONE INCH ON ORIGINAL DRAWING  
0 1"  
IF NOT ONE INCH ON THIS SHEET, ADJUST SCALES ACCORDINGLY.

DRAWING NUMBER  
**E-301**