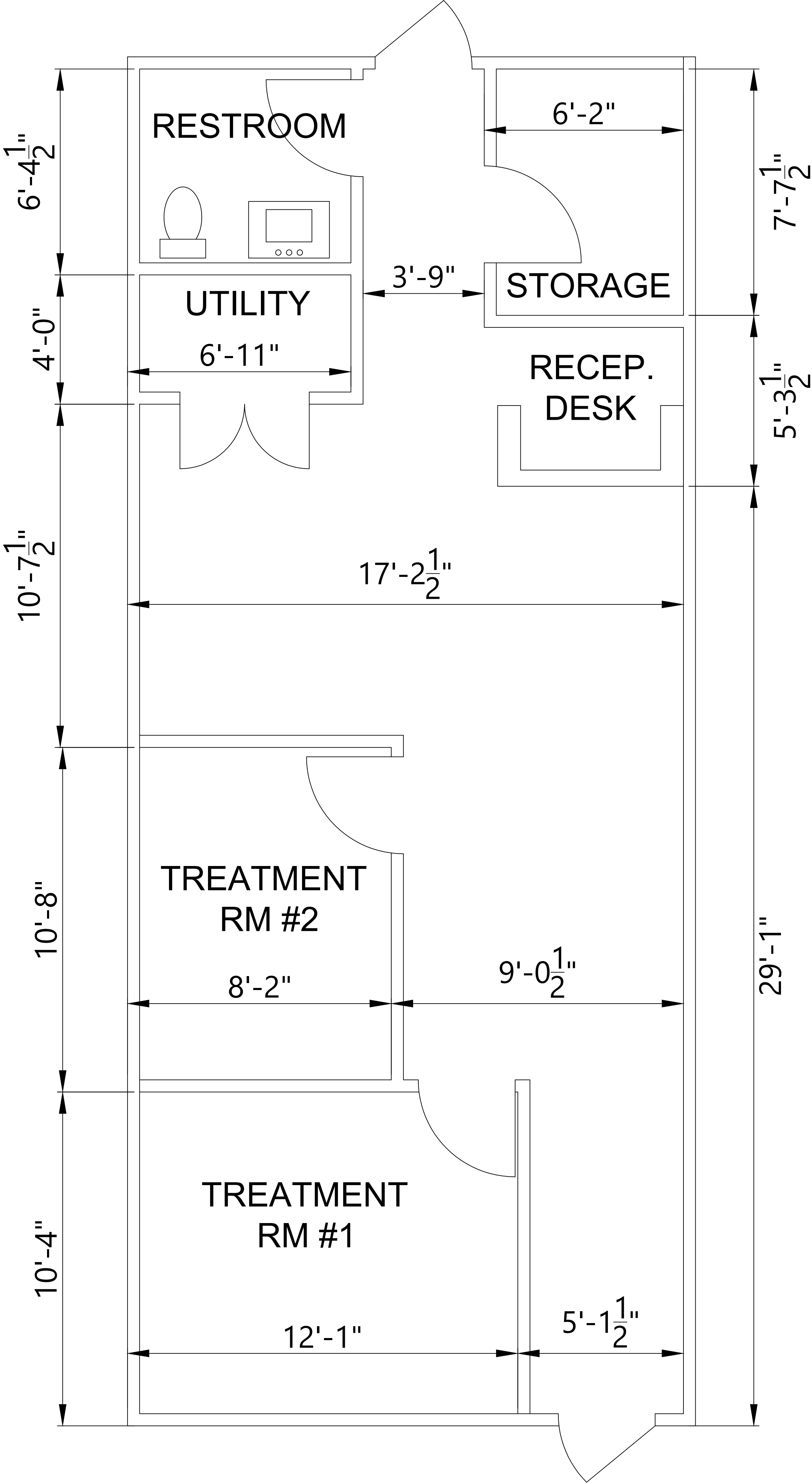


NOTE: TREATMENT ROOMS ARE TO FOLLOW 2017 NEC SECTION 517.12 WIRING METHODS AND 2017 NEC SECTION 517.13 GROUNDING OF RECEPTACLES AND FIXED ELECTRICAL EQUIPMENT IN PATIENT CARE SPACES. WIRING IN PATIENT CARE SPACES SHALL COMPLY WITH 517.13 (A) AND (B).

RELEASED FOR  
CONSTRUCTION  
As Noted on Plans Review  
Development Services Department  
Lee's Summit, Missouri  
03/27/2024



LIV AESTHETICS & WELLNESS

618 SW 3RD STREET, SUITE 1  
LEES SUMMIT, MO

FLOOR PLAN

drawing type	for record
project no.	24-010
date	03.16.2024
rev #	date