



Products				
PlotID	Net Qty	Product	Length	Plies
J1-16" O.C.	1	9-1/2" BCI@ 5000s-1.8	34' 0"	1
J2-16" O.C.	13	9-1/2" BCI@ 5000s-1.8	32' 0"	1
J3-16" O.C.	20	9-1/2" BCI@ 5000s-1.8	30' 0"	1
J4-16" O.C.	5	9-1/2" BCI@ 5000s-1.8	28' 0"	1
J5-16" O.C.	3	9-1/2" BCI@ 5000s-1.8	24' 0"	1
J6-16" O.C.	1	9-1/2" BCI@ 5000s-1.8	18' 0"	1
J7-16" O.C.	19	9-1/2" BCI@ 5000s-1.8	16' 0"	1
J8-16" O.C.	2	9-1/2" BCI@ 5000s-1.8	14' 0"	1
J9-16" O.C.	2	9-1/2" BCI@ 5000s-1.8	10' 0"	1
J10-16" O.C.	1	9-1/2" BCI@ 5000s-1.8	8' 0"	1
B1-2	6	1-3/4" x 9-1/2" VERSA-LAM@ 2.0 3100 SP	18' 0"	2
B2-2	2	1-3/4" x 9-1/2" VERSA-LAM@ 2.0 3100 SP	16' 0"	2
B3-2	2	1-3/4" x 9-1/2" VERSA-LAM@ 2.0 3100 SP	12' 0"	2
B4-2	2	1-3/4" x 9-1/2" VERSA-LAM@ 2.0 3100 SP	6' 0"	2
B5-2	4	1-3/4" x 11-7/8" VERSA-LAM@ 2.0 3100 SP	10' 0"	2
Ca1	18	1-1/8" x 9-1/2" BC RIM BOARD OSB	12' 0"	1
Bk1	181	9-1/2" BCI@ 5000s-1.8	2' 0"	1

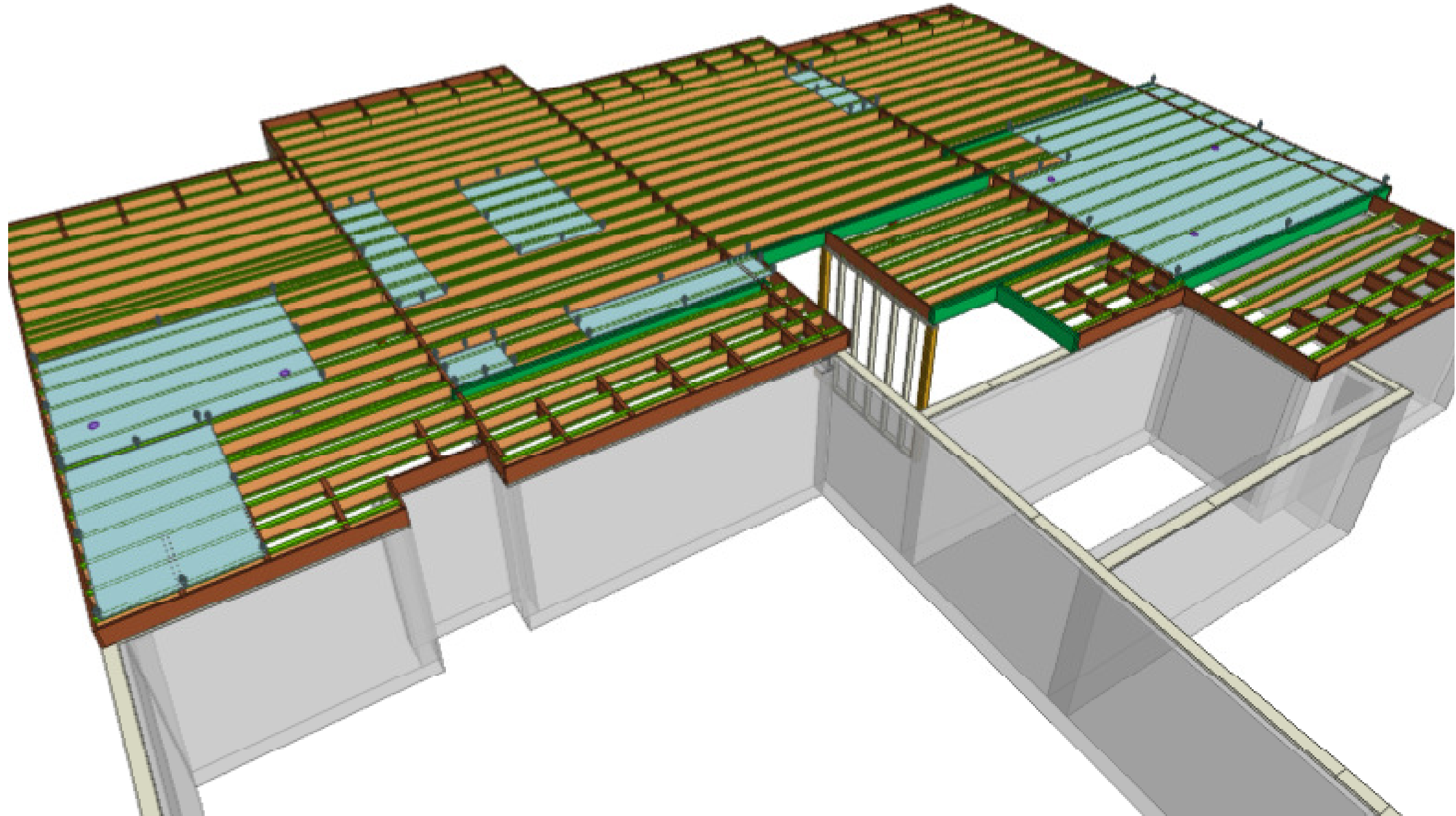
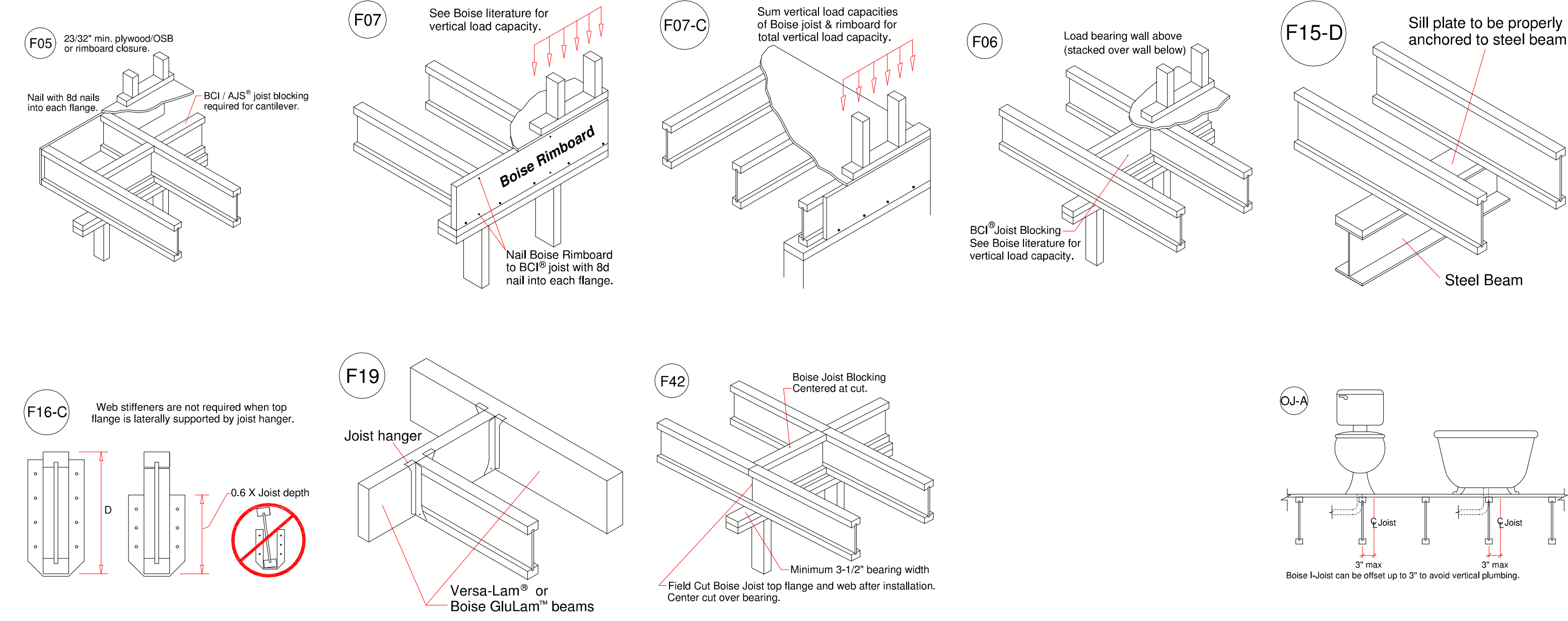
Connector Summary				
PlotID	Qty	Manuf	Product	Flange
H1	1	Simpson	HU410	None
H2	3	Simpson	ITS2.06/9.5	None

Van Deurzen and Associates, P.A.
11011 King Street, Suite 130
Overland Park, KS 66210
(913) 451-6305 FAX: (913) 451-1021

This shop drawing has been reviewed for conformance with the design concept and information given in the Contract Documents.

☒ Reviewed with no exceptions noted.
☐ Reviewed as noted.
☐ Returned for correction.
☐ Not Reviewed.

By: JWH Date: 01/18/2024



Revisions:BY:

Boise Cascade

MEAD LUMBER

SALES PRESENTATION DRAWING
No structural or dimensional check has been made of this design drawings of the building, therefore purchaser is to check and approve all dimensions, quantities, loads, and details carefully. This drawing has not been check by Boise Engineering.
NOTE:
ALL MEASUREMENTS TO BE VERIFIED IN THE FIELD.

MEAD LUMBER
Woodside Ridge-Lot 159
Boise Cascade
N/A

BC FRAMER

Scale: 1/4"=1'-0"

Date: 01/02/2023

By: Mitek

File: Woodside Ridge-Lot 159

DWG:

Sheet: 1/1