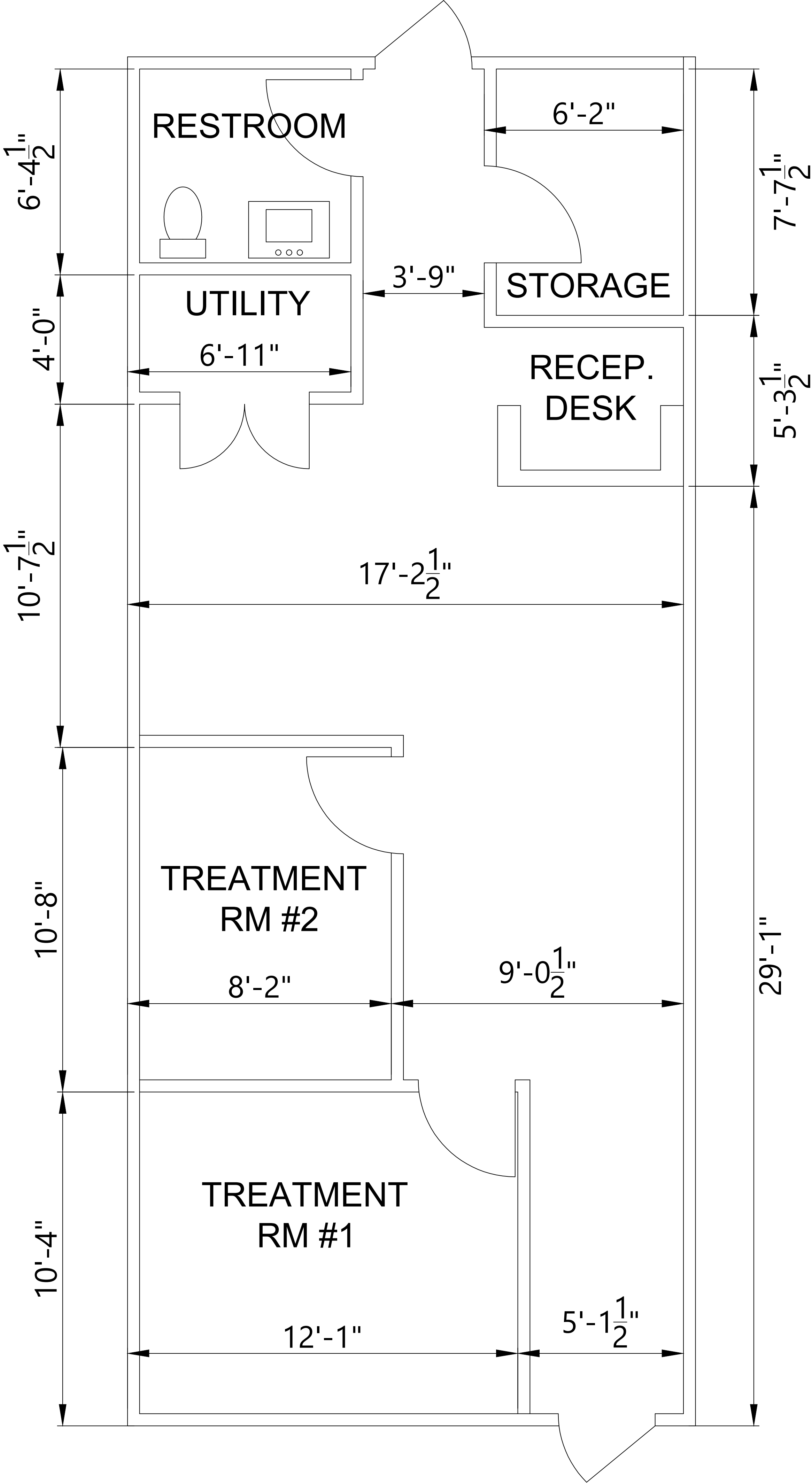


NOTE: TREATMENT ROOMS ARE TO FOLLOW 2017 NEC SECTION 517.12 WIRING METHODS AND 2017 NEC SECTION 517.13 GROUNDING OF RECEPTACLES AND FIXED ELECTRICAL EQUIPMENT IN PATIENT CARE SPACES. WIRING IN PATIENT CARE SPACES SHALL COMPLY WITH 517.13 (A) AND (B).



LIV AESTHETICS & WELLNESS

618 SW 3RD STREET, SUITE I
LEES SUMMIT, MO

FLOOR PLAN

drawing type	for record
project no.	24-010
date	03.16.2024
rev #	date