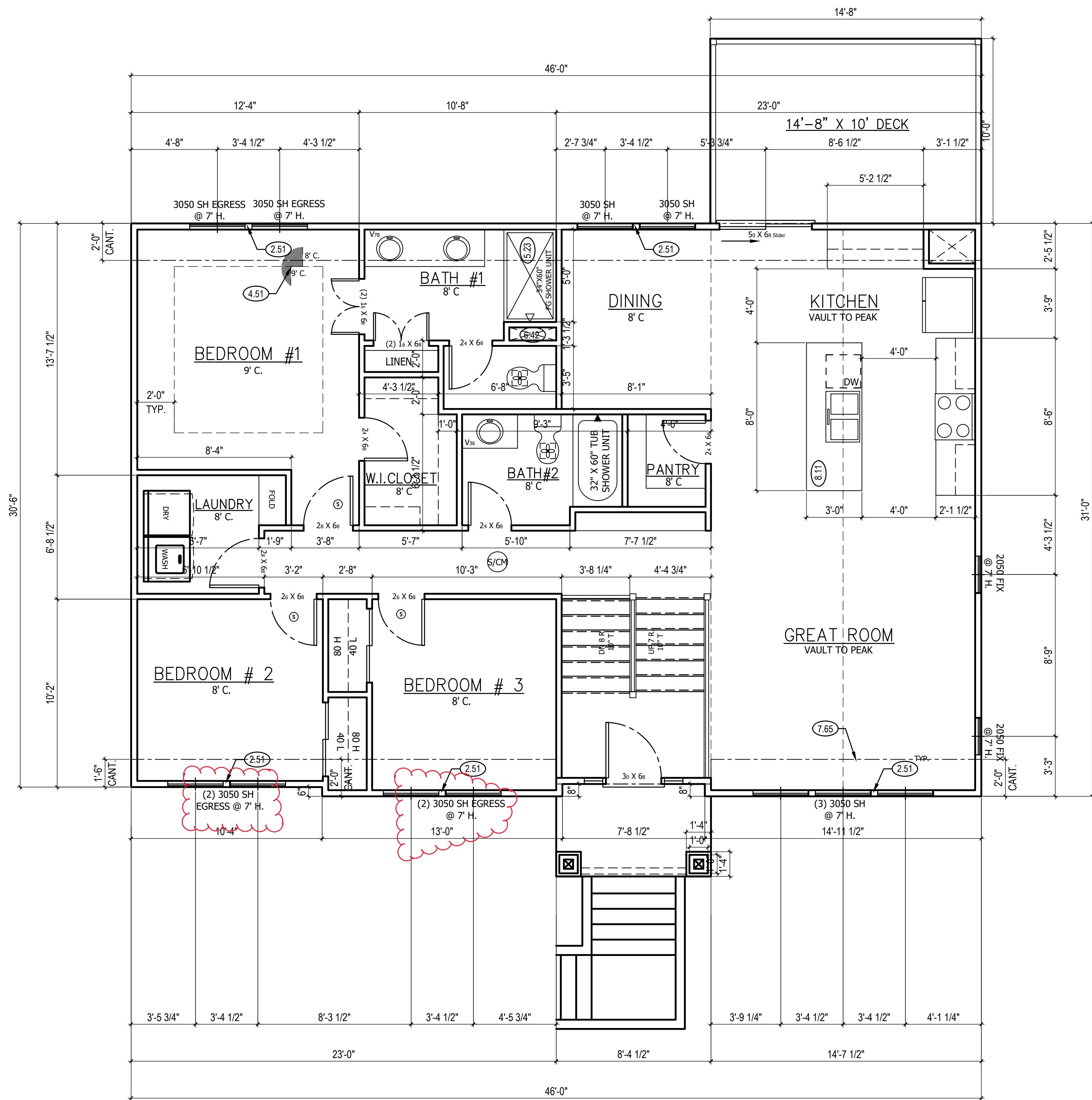




WINDOW SIZES ARE WRITTEN IN FEET AND INCHES PER INDUSTRY STANDARD. EX: 3050SH= 3'-0" X 5'-0" SINGLE HUNG, 3066 FIX= 3'-0" X 6'-6" FIXED



MAIN FLOOR PLAN

SCALE: 1/4" = 1'-0"

1

MAIN FLOOR PLAN NOTES

- 1.22 EXPOSED TOP OF FOUNDATION WALL.
- 2.11 DOUBLE 2X4 STUD WALL.
- 2.12 2X6 STUD WALL.
- 2.31 SIX SIDED TUB/SHOWER ASSEMBLY INCLUDING THERMOPLY ON EXTERIOR WALL TO 2" ABOVE TOP OF TUB DECK OR TUB/SHOWER UNIT
- 2.32 INSULATE CANTILEVER AS REQUIRED PRIOR TO BLOCKING
- 7.41 OPEN HANDRAILS
- 2.41 CURB STAIR SYSTEM WITH OPEN HANDRAILS
- 2.45 STAIRS TO LOWER LEVEL UNFINISHED
- 2.51 3 STUDS BETWEEN WINDOW UNITS
- 3.38 12"x12" BOX COLUMN WITH 1X8 PANEL WRAP, 1X6 TRIM AT BASE, 1X4 TRIM AT TOP, 1X2 VERTICAL TRIM ALL SIDES.
- 5.05 HOSE BIBB
- 5.23 FIBERGLASS UNIT; SEE DETAIL
- 6.42 HVAC FLOOR OPENING. HEADER OFF FLOOR JOISTS AS REQUIRED. BUMP TRUSSES AS NECESSARY FOR HVAC ACCESS.
- 7.65 LINE OF FLOOR ABOVE
- 7.66 LINE OF FLOOR BELOW
- 7.71 20 MINUTE FIRE RATED SOLID CORE WITH SELF-CLOSING HINGES
- 7.88 CHANGE IN FLOORING MATERIAL
- 8.11 24" CABINET + 12" OVERHANG FLAT ISLAND. VERIFY LOCATION WITH PERSONAL BUILDER.

GENERAL NOTES

- WINDOWS TO COMPLY WITH IRC R312.2 FOR FALL PROTECTION.
- ALL EXTERIOR WALLS, INTERIOR BEARING WALLS, AND INTERIOR BRACED WALLS ARE AT 16" O.C. UNLESS NOTED OTHERWISE.
- ALL INTERIOR NON-LOAD BEARING, NON-BRACED, NON-CABINET WALLS ARE ALLOWED AT 24" O.C.
- ROOF AND CEILING FRAMING ARE PRE-ENGINEERED WOOD TRUSSES UNLESS NOTED OTHERWISE.
- DIMENSIONAL LUMBER IS LABELED PER INDUSTRY STANDARD TERMINOLOGY. ACTUAL LUMBER SIZING IS EXPECTED TO VARY PER VENDOR.
- HVAC DUCTWORK RUNNING THROUGH THE ATTIC SPACE SHALL BE HUNG FROM ABOVE TO ALLOW COMPLETE INSULATION SURROUND.
- PROVIDE BLOCKING AT ALL CEILING JUMPS FOR INSULATION.
- 2X6 EXTERIOR WALL OVER 12' SHALL BE DOUGLAS FIR #2.
- SMOKE AND CARBON MONOXIDE DETECTORS SHOW ON PLANS ARE TO BE CONSIDERED RECOMMENDATIONS ONLY. FINAL PLACEMENT IS TO BE DETERMINED BY MUNICIPAL REQUIREMENTS.
- WINDOW SIZES ARE WRITTEN IN FEET AND INCHES PER INDUSTRY STANDARD. EX: 3050SH= 3'-0" X 5'-0" SINGLE HUNG, 3066 FIX= 3'-0" X 6'-6" FIXED

CPG DBA



120 SE 30TH ST.  
LEE'S SUMMIT, MO 64082  
816-246-6700

COPYRIGHT 2017

THIS DRAWING HAS BEEN PREPARED BY SUMMIT HOMES, OR UNDER THEIR DIRECT SUPERVISION AS AN INSTRUMENT OF SERVICE AND IS INTENDED FOR USE ONLY ON THIS PROJECT. ALL DRAWINGS, SPECIFICATIONS, AND DESIGNS, INCLUDING THE OVERALL LAYOUT, FORM, AND COMPOSITION OF SPACES ARE PROTECTED BY COPYRIGHT REGISTERED TO CPG, INC. ANY REPRODUCTION, USE, OR DISCLOSURE OF THE INFORMATION CONTAINED HEREIN WITHOUT THE WRITTEN CONSENT FROM CPG, INC. DBA SUMMIT HOMES EXCEPT AS REQUIRED FOR BIDDING AND CONSTRUCTION OF THIS PROJECT IS STRICTLY PROHIBITED.

ADDRESS:  
3513 SE CORBIN DR

CHERRY BLOSSOM  
FARM HOUSE  
COBEY CREEK #149

PROFESSIONAL SEAL:

DRAWN BY:  
S.E.S

ISSUE DATE:  
07.10.2023

SHEET NUMBER:

A4.0