

EXHIBIT "A"

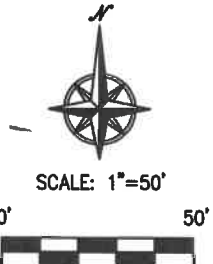
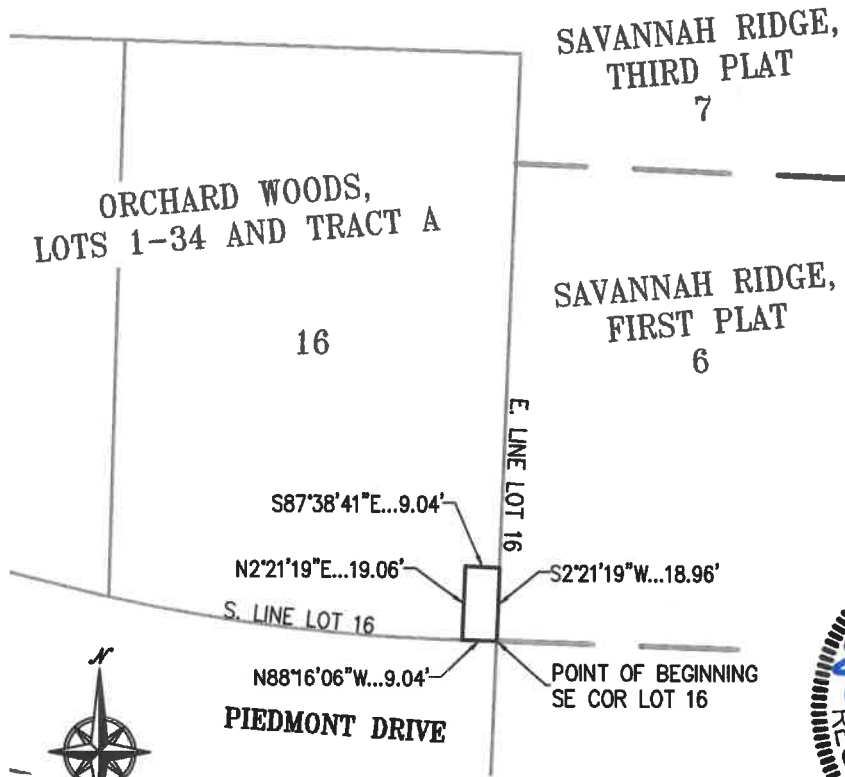
MONUMENT SIGN EASEMENT

PART OF LOT 16, ORCHARD WOODS, LOTS 1-34 AND TRACT A, IN THE CITY OF LEE'S SUMMIT, JACKSON COUNTY, MISSOURI.

MONUMENT EASEMENT DESCRIPTION:

THIS DESCRIPTION WAS PREPARED BY PHELPS ENGINEERING, INC., ON FEBRUARY 19, 2024 FOR PROJECT NO. 211142. ALL THAT PART OF LOT 16, ORCHARD WOODS, LOTS 1-34 AND TRACT A, A PLATTED SUBDIVISION OF LAND, IN THE CITY OF LEE'S SUMMIT, JACKSON COUNTY, MISSOURI, BEING MORE PARTICULARLY DESCRIBED AS FOLLOWS:

BEGINNING AT SOUTHEAST CORNER LOT 16; THENCE N 88°16'06" W, ALONG THE SOUTH LOT LINE OF SAID LOT 16, A DISTANCE OF 9.04 FEET; THENCE N 2°21'19" E, A DISTANCE OF 19.06 FEET; THENCE S 87°38'41" E, A DISTANCE OF 9.04 FEET, TO A POINT ON THE EAST LINE OF SAID LOT 16; THENCE S 2°21'19" W, ALONG THE EAST LINE OF SAID LOT 16, A DISTANCE OF 18.96 FEET, TO THE POINT OF BEGINNING, CONTAINING 172 SQUARE FEET, MORE OR LESS.



I HEREBY CERTIFY THAT THIS REAL PROPERTY LEGAL DESCRIPTION HAS BEEN PREPARED BY ME OR UNDER MY DIRECT SUPERVISION.



BY: SCOTT G. CHRISMAN, MO. LS-2594

\\PHELPS-SERVER\Projects\P\211142\Dwg\Exhibits\MONUMENT EASEMENT LOT 16.dwg Layout:1 Feb 27, 2024 - 9:09am

	PLANNING	PHELPS ENGINEERING, INC (913) 393-1155 1270 N. Winchester Olathe, Kansas 66061 www.phelpsengineering.com	Fax (913) 393-1166	CERTIFICATE OF AUTHORIZATION KANSAS LAND SURVEYING - LS-82	PROJECT NO. 211142	
	ENGINEERING			ENGINEERING - E-391		DATE: 2-19-24
	IMPLEMENTATION			CERTIFICATE OF AUTHORIZATION MISSOURI LAND SURVEYING-2007001128		BY: JMO
				ENGINEERING-2007005058		