

General Notes:

Concrete:  
1.  $f_c = 4,000$  psi at 28 days, normal weight, 5 to 7% air entrainment

2. Reinforcing Bars (Rebar): ASTM A615 Grade 60

3. Rebar lap splice and hook lengths:

Bar	Lap Length	Hook
Length		
#3	18"	6"
#4	24"	8"
#5	30"	10"
#6	36"	12"
#7	42"	14"
#8	51"	16"

4. Minimum concrete cover:

- Surfaces cast against earth
- Surfaces permanently exposed to weather
- Formed surfaces exposed to earth

5. Contractor shall follow all ACI specifications and standards for applicable to the work herein.

Structural Steel:

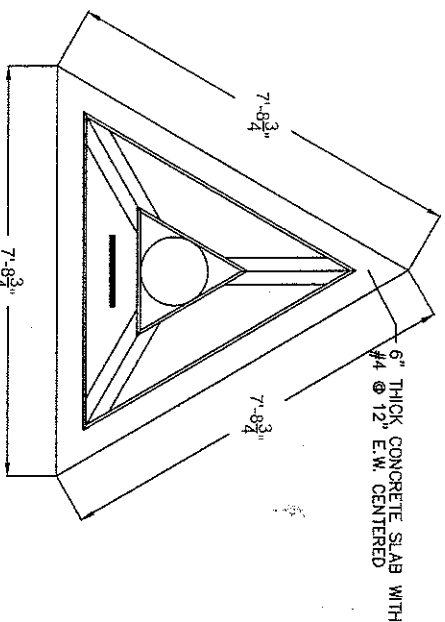
- Bolts (steel to steel): ASTM A325 unless otherwise noted.
- Anchor Rods: ASTM A36 ( $F_y = 36$  ksi)
- Coating: All Steel to be hot dip galvanized after fabrication. Grout for baseplates: cementitious, non-shrink, flowable, 5,000 psi compressive strength in 28 days.
- Steel fabrication and erection shall conform to all AISC documents which address this execution.

Special Inspection:

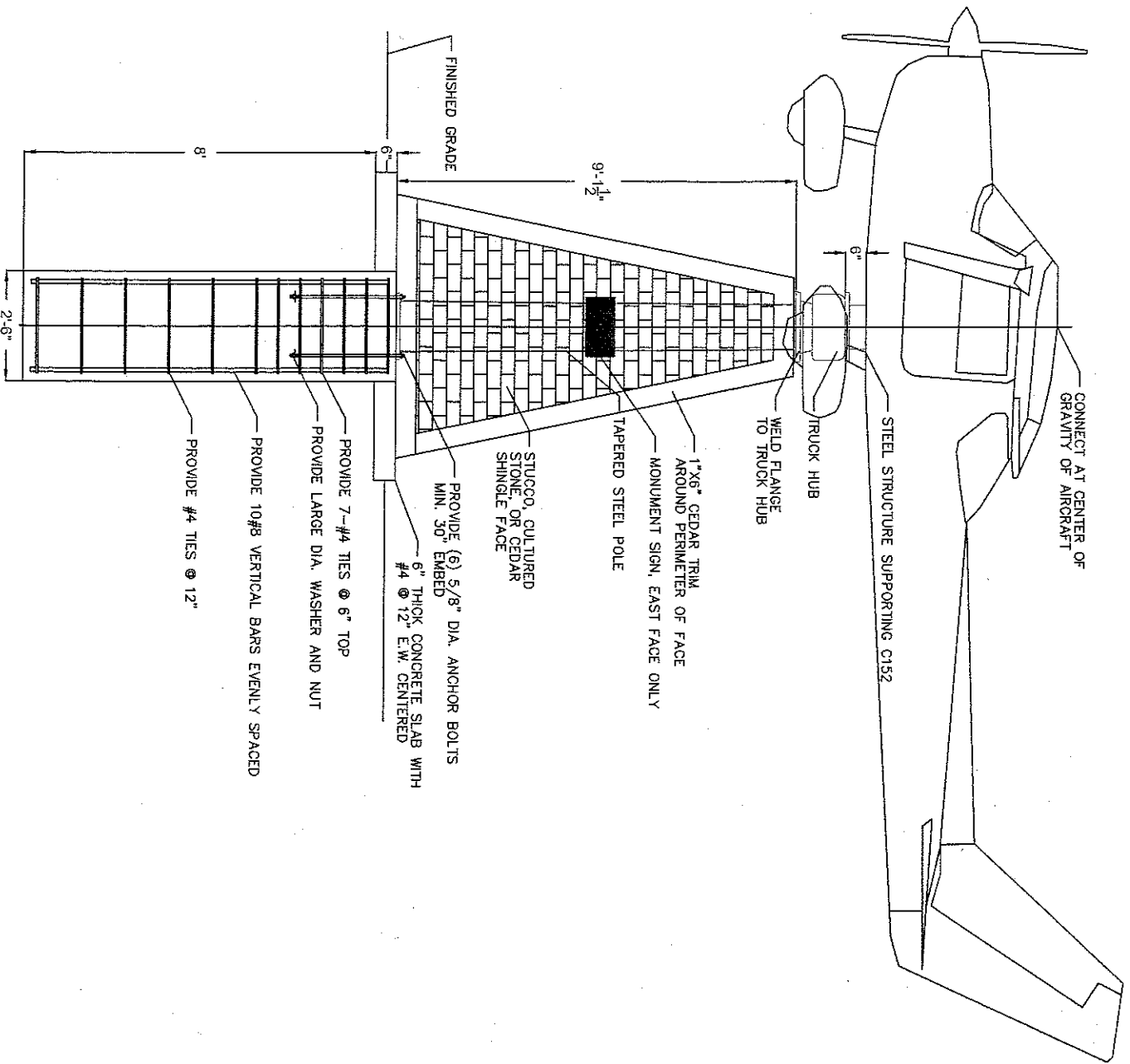
- Grading, fill and site preparation
- Concrete mix proportions
- Reinforcing steel placement
- Concrete: sampling, testing
- Bolts in concrete
- Structural steel welding and bolting

Monument Structure:

- Construct a steel subframe under the monument wooden structure. Use 2"x2"x $\frac{3}{4}$ " Carbon Steel Angle to construct triangular frame to attach marine grade plywood. Angle shall be anchored to the concrete base and shall be welded to the foundation column.
- Install 1"x6" cedar trim around the perimeter of each face of the the monument base.
- Install Stucco, cultured stone, or cedar shingles on the face of each side of the monument base.
- Install a Monument Sign with language to be determined on the face of the monument facing East towards the parking lot area.
- Fabricate and install a top seal around tapered steel pole and atop the monument base to prevent snow and debris from entering the monument base. Attach to carbon steel angle subframe.
- All colors and finishes shall be earthtone with a natural look.



2 TOP VIEW  
NOT TO SCALE



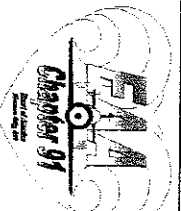
1 FOUNDATION DETAIL  
NOT TO SCALE

RELEASED FOR CONSTRUCTION

AS NOTED ON PLANS REVIEW  
CODES ADMINISTRATION  
LEE'S SUMMIT, MISSOURI

BY: [Signature] DATE: 3/15/11

EXPERIMENTAL AIRCRAFT ASSOCIATION  
CHAPTER 91 - LEE'S SUMMIT AIRPORT  
FLYING MONUMENT



DRAWN BY: DAN FRANK DATE: APRIL 18, 2011

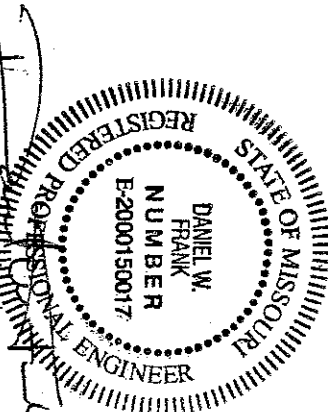


EXHIBIT 1