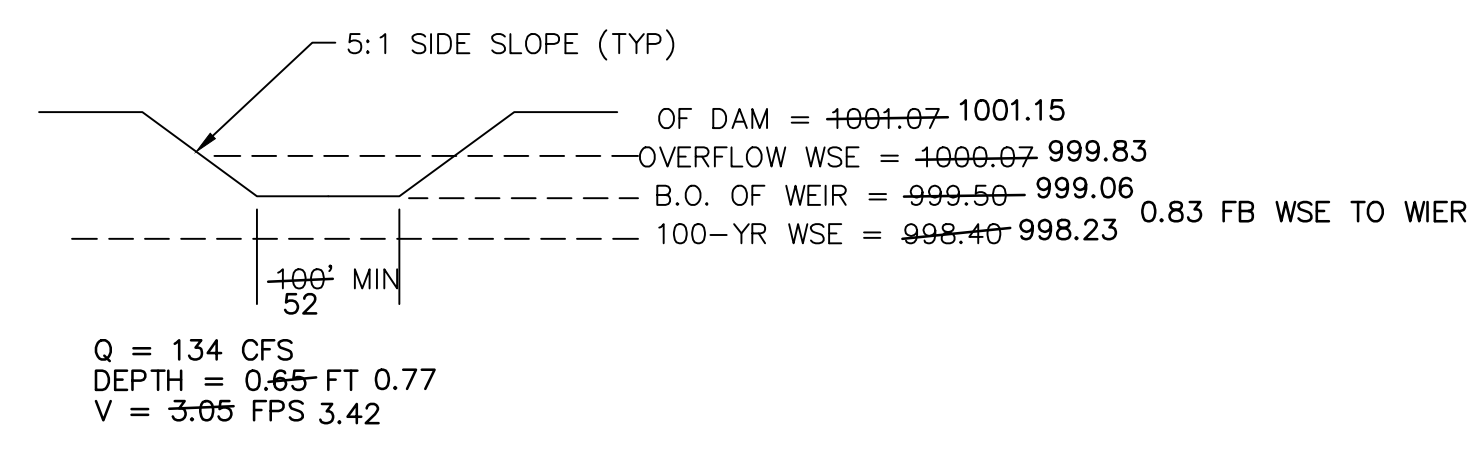
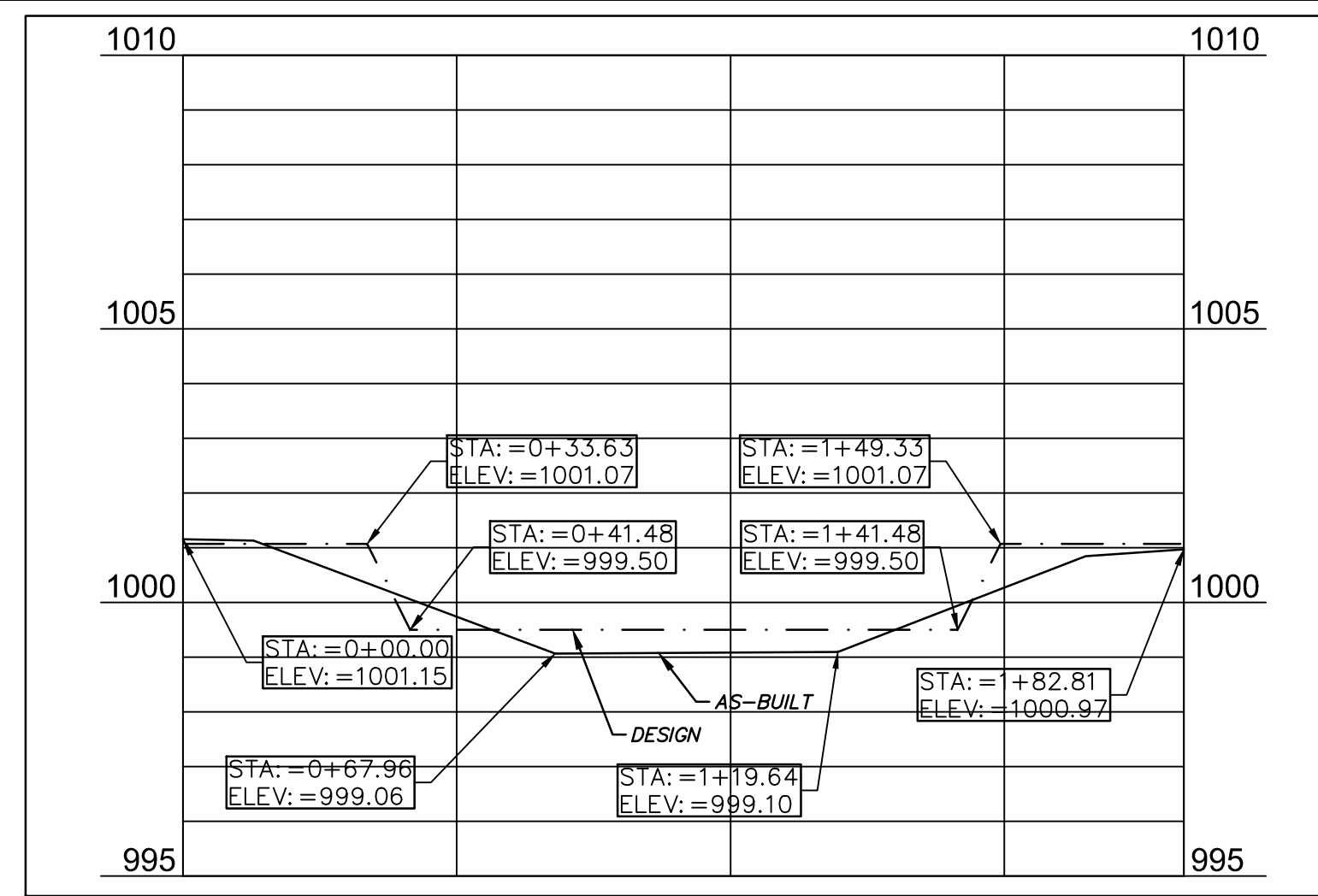


**CONTRACTOR NOTE:**

ALL TEMPORARY SILTATION BASINS, SEDIMENT BASINS AND DETENTION BASINS MUST BE CONSTRUCTED PRIOR TO ANY OTHER IMPROVEMENTS.



**EDD-3  
EMERGENCY SPILLWAY DETAIL**



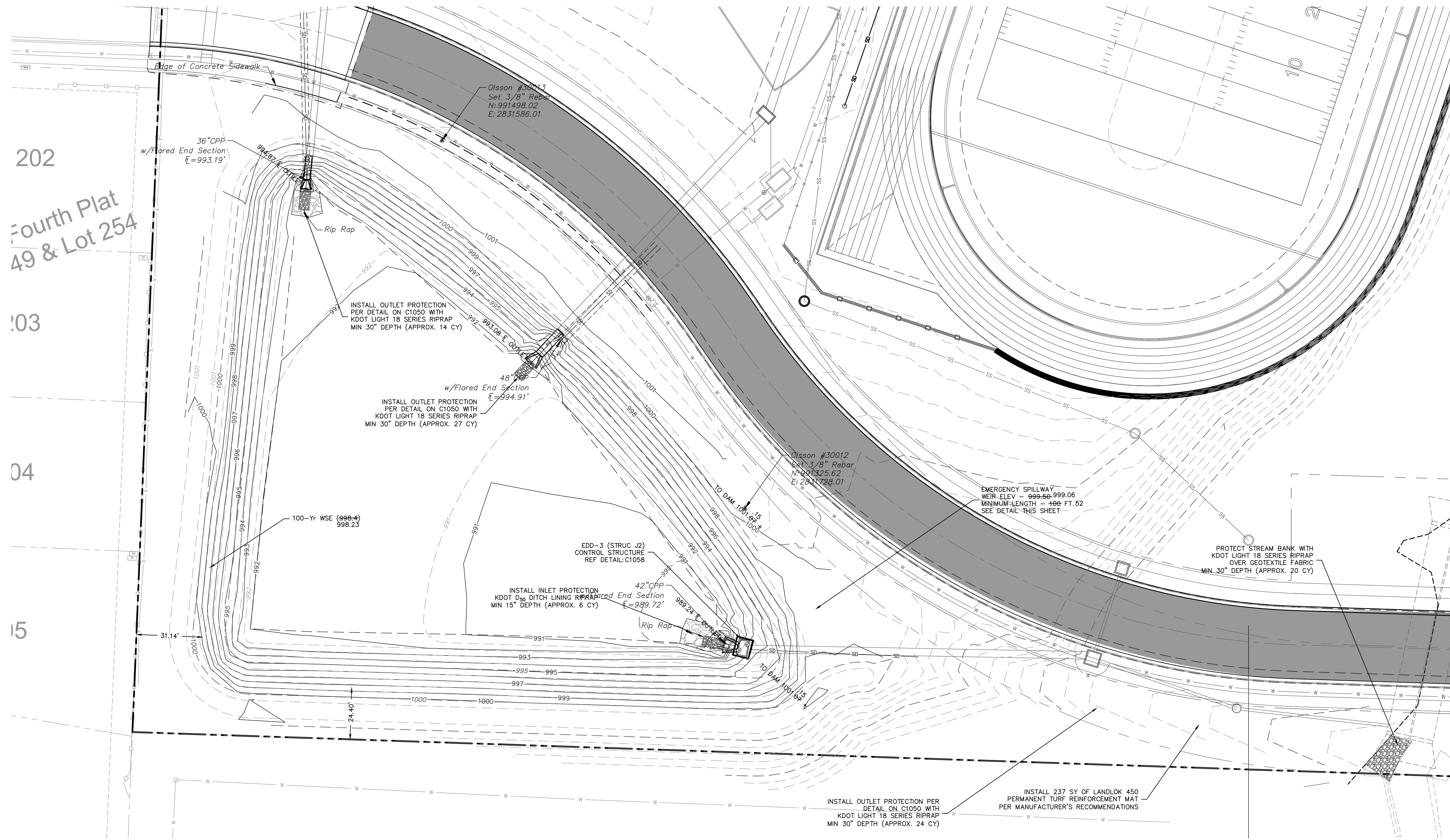
**EDD-3 EMERGENCY SPILLWAY DETAIL  
(DESIGN VS AS-BUILT)**

DESIGN VS AS-BUILT DETENTION AREA				
ELEVATION	DESIGN AREA (ACRES)	DESIGN VOL (CF)	AS-BUILT AREA (ACRES)	AS-BUILT VOL (CF)
989.72	0.00	0	0.00	0
990	0.04	229	0.01	85
991	0.28	7015	0.27	6358
992	0.65	27906	0.63	26134
993	0.76	57632	0.76	56583
994	0.82	91870	0.84	91605
995	0.88	128722	0.91	129894
996	0.93	167969	0.98	171233
997	0.99	209612	1.04	215402
998	1.06	254087	1.10	262186
999	1.12	301393	1.14	311147
1000	1.23	352402	1.26	363594

**LEGEND**

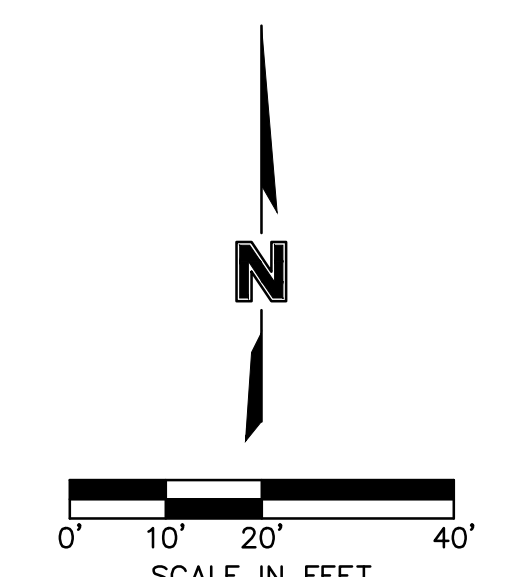
---	PROPERTY LINE
- - - -	DESIGN MAJOR CONTOUR
- · - · -	DESIGN MINOR CONTOUR
---	AS-BUILT MAJOR CONTOUR
- · - · -	AS-BUILT MINOR CONTOUR

**DETENTION AS-BUILTS  
11-07-2023**



**HEC-14 RIPRAP APRON SIZING FOR OUTFALL J-1**

D50 (in)	Q (ft <sup>3</sup> /s)	D (ft)	TW (ft)	TW/D	APRON LENGTH (ft)	APRON DEPTH (ft)	Width at End of Apron (ft)
4.5	63	3.5	2.48	0.708571	4	3.3	29.7
Design	9				28		20



DWG: F:\2020\0001-0500\0200-0103\40-Design\AutoCAD\Final Plans\Sheets\CONSTRUCTION DOCUMENTS\C\_GRD002\_0200103.dwg  
 DATE: Nov 09, 2023 10:38am  
 USER: tparsons  
 T\_PSA\_S\_0200103  
 V\_XALT\_00103  
 C\_PSRF\_00103  
 AS\_BUILT\_Detention\_Ponds  
 C\_PTEBK\_0200103  
 T\_PBASE\_0200103  
 XREFS: C\_XBASE\_0200103

**DLR Group**  
 © DLR Group  
 60200 DLR Group, Inc. a Missouri corporation  
 Missouri State Certificate of Authority #00099

**olsson**  
 OLSSON, CIVIL ENGINEERING  
 MISSOURI CERTIFICATE OF AUTHORITY #001982  
 7301 West 133rd Street, Suite 200  
 Overland Park, KS 66214-7750  
 TEL: 913.381.1170  
 www.olsson.com

STATE OF MISSOURI  
 TERRY M. PATRICK  
 PROFESSIONAL ENGINEER  
 NUMBER PE-2018010505  
 01/18/22

**LEE'S SUMMIT MIDDLE SCHOOL #4**  
 LEE'S SUMMIT R-7 SCHOOL DISTRICT  
 1001 SE BAILEY ROAD  
 LEE'S SUMMIT, MO 64861

PACKAGE 2 -  
 STRUCTURAL & SITE  
 UTILITIES  
 ISSUED FOR PERMIT  
 08/28/20  
 PRO02R 01.14.21

13-20102-00  
 DETENTION BASIN  
 DETAIL  
**C1061**