



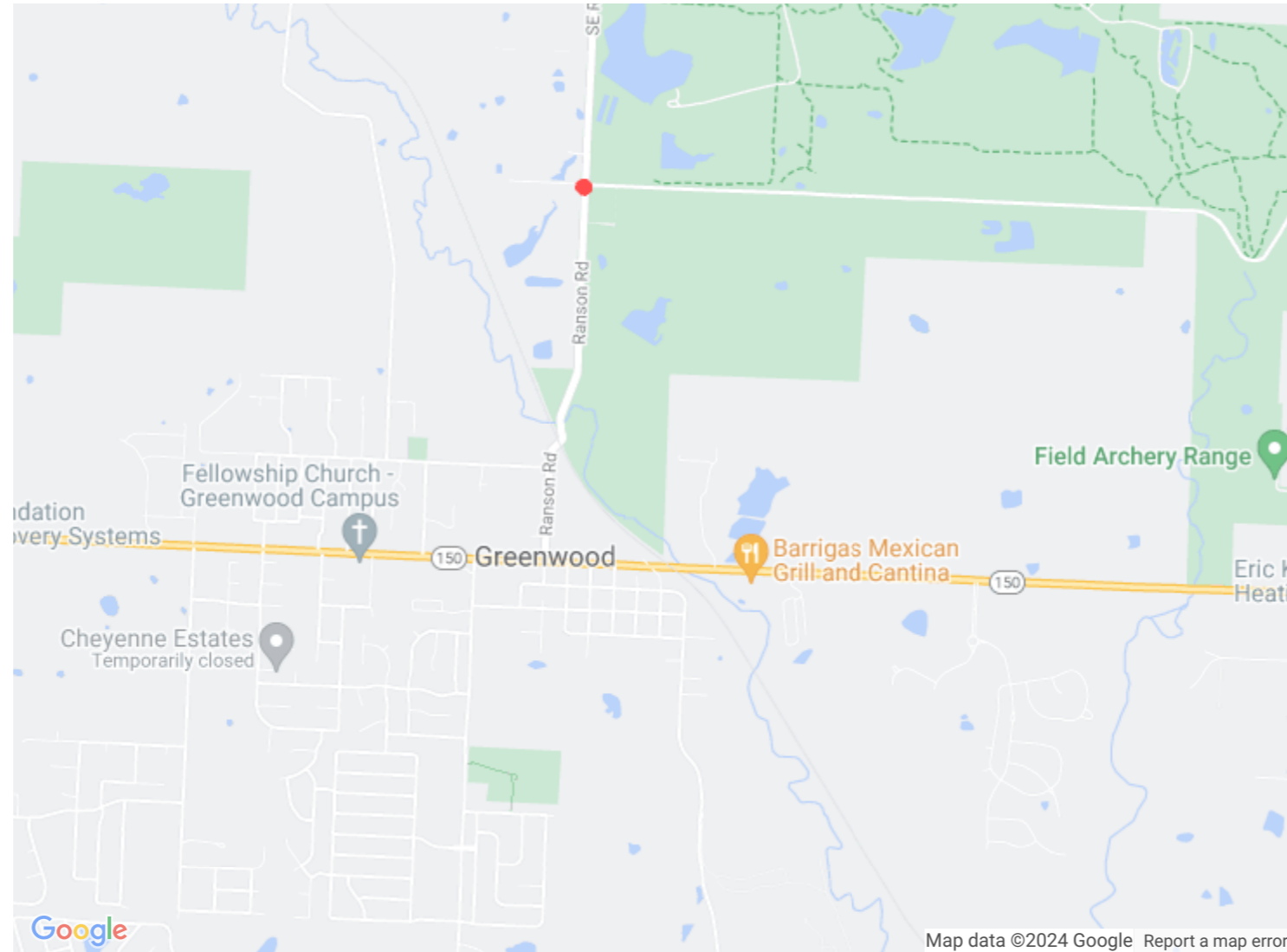
M0 – Greenwood PD

LICENSE PLATE READER CAMERA INSTALLATION

2024

Index

- 1 Cover Page
- 2 Camera Location Information
- 3 Site Plans



Know what's below.
Call before you dig.

Camera Locations

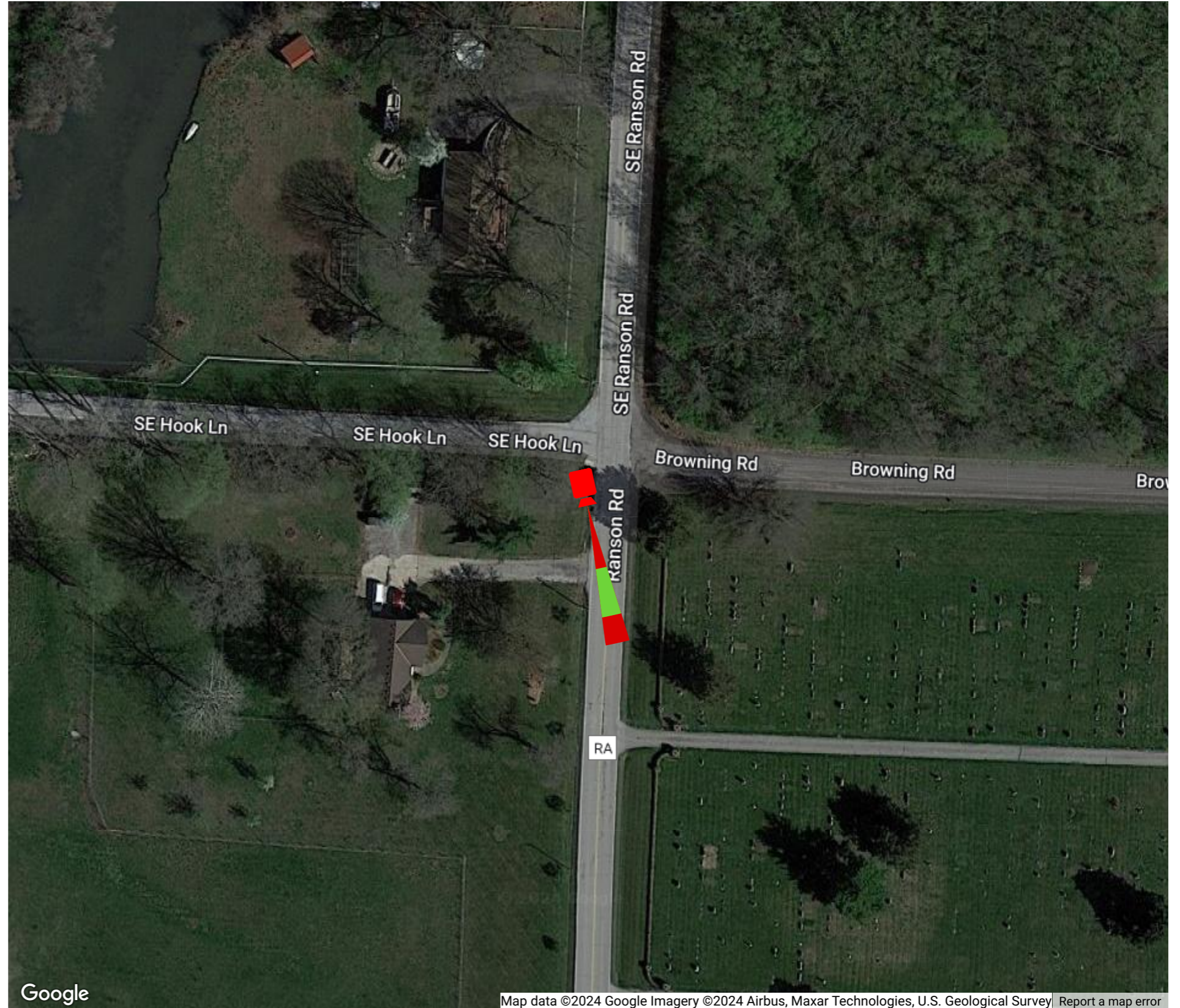
Creating Printable PDF, 100% Complete

No.	Name	Address	Direction	Lat	Lng	Pole Type	Distance from Roadway (ft)
1	#03 Ranson Rd SB @ Hook Ln.	1602 N Ranson Rd, Lee's Summit, MO 64086, USA	Southbound	38.86592782109083	-94.34189363846664	Flock Pole - 12 ft	6.2



Distance: 6.2 ft.

Position



Property	Value
Camera Number	1
Name	#03 Ranson Rd SB @ Hook Ln.
Address	1602 N Ranson Rd, Lee's Summit, MO 64086, USA
Direction	Southbound
Lat	38.86592782109083
Lng	-94.34189363846664
Pole Type	Flock Pole - 12 ft
Distance from Roadway (ft)	6.2
Speed Limit	35

Map data ©2024 Google Imagery ©2024 Airbus, Maxar Technologies, U.S. Geological Survey Report a map error

Location Notes: It is in City of Greenwood (see sign that it is behind)

Ds note- city owns 10' of grass past the fog line.



Creating Printable PDF, 100% Complete