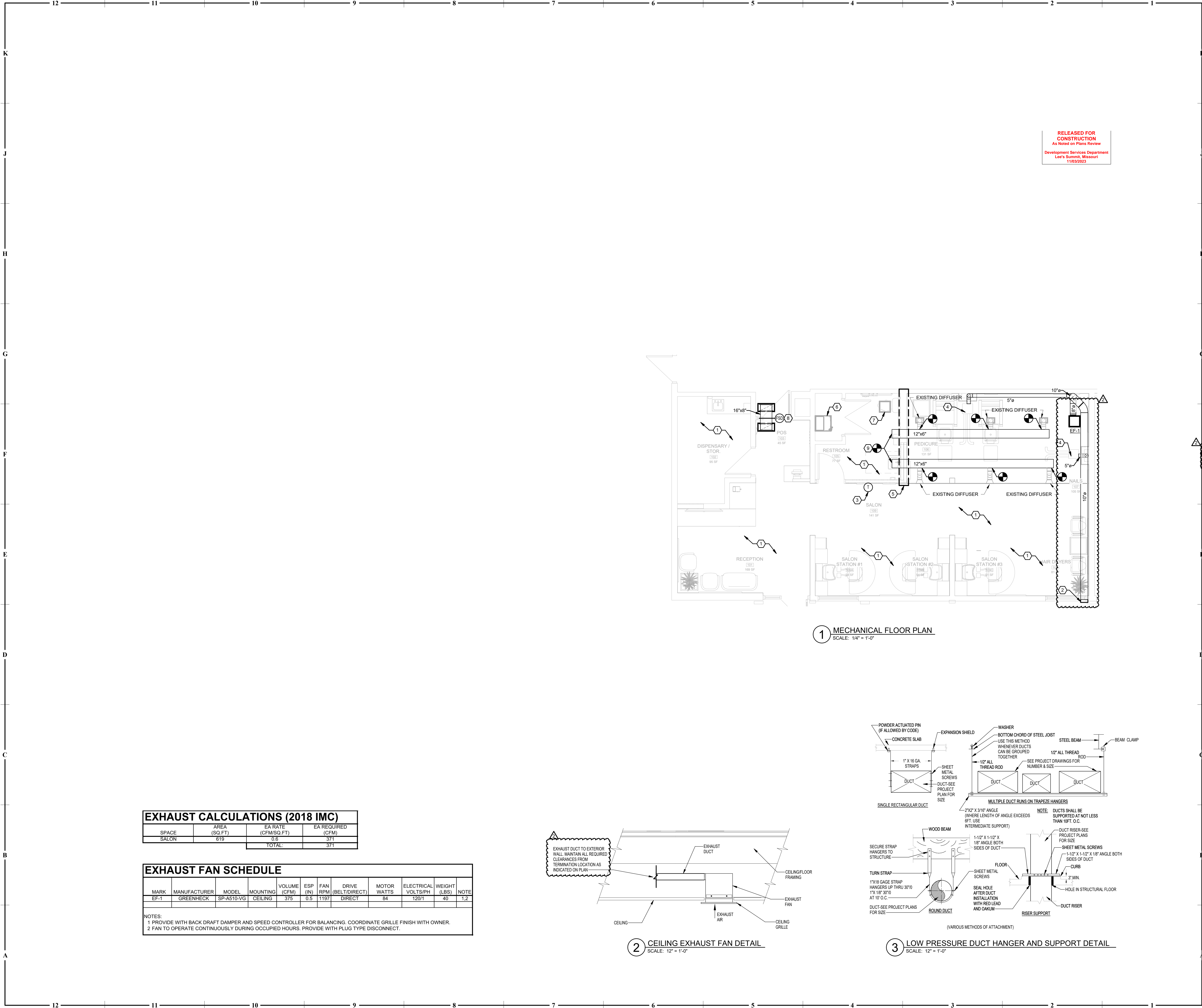
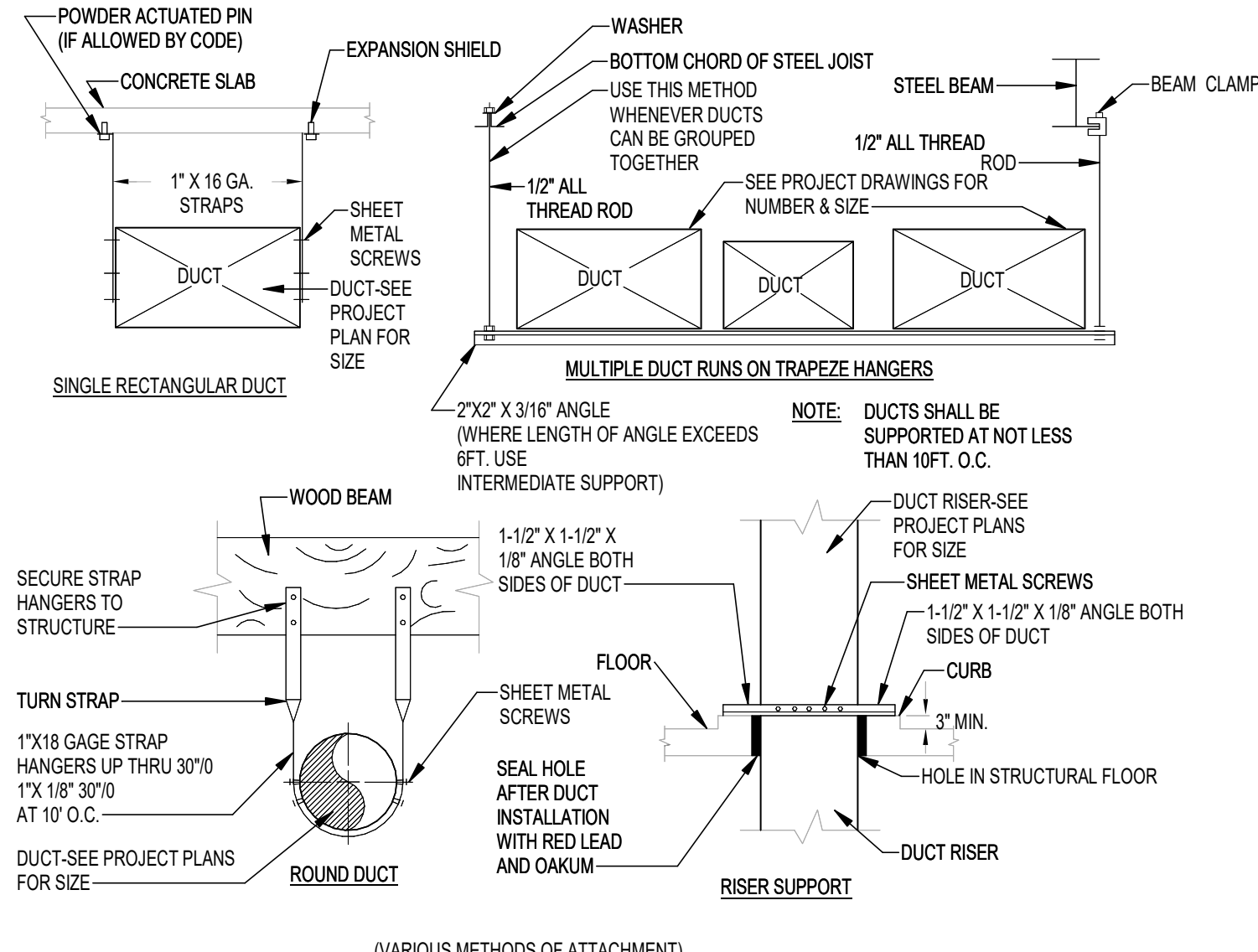
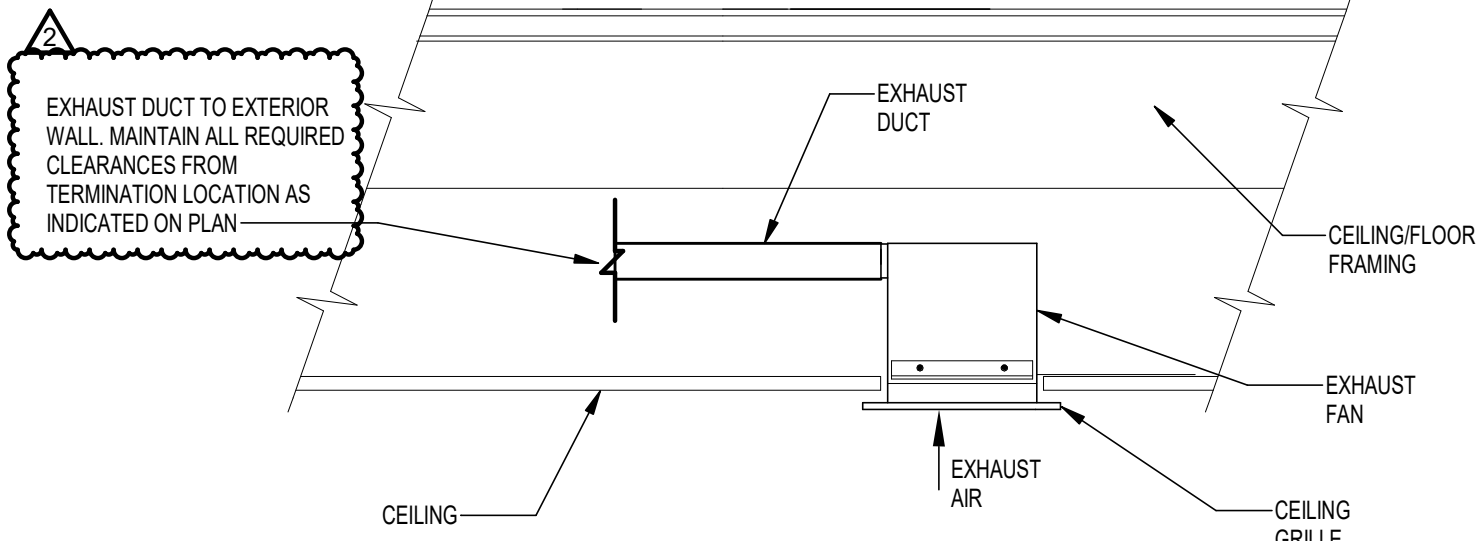


11/2/2023 2:17:32 PM



EXHAUST CALCULATIONS (2018 IMC)			
SPACE	AREA (SQ.FT)	EA RATE (CFM/SQ.FT)	EA REQUIRED (CFM)
SALON	619	0.6	371
TOTAL:			371

EXHAUST FAN SCHEDULE											
MARK	MANUFACTURER	MODEL	MOUNTING	VOLUME (CFM)	ESP (IN)	FAN RPM	DRIVE (BELT/DIRECT)	MOTOR WATTS	ELECTRICAL VOLTS/PH	WEIGHT (LBS)	NOTE
EF-1	GREENHECK	SP-A510-VG	CEILING	375	0.5	1197	DIRECT	84	120/1	40	1.2
NOTES: 1 PROVIDE WITH BACK DRAFT DAMPER AND SPEED CONTROLLER FOR BALANCING. COORDINATE GRILLE FINISH WITH OWNER. 2 FAN TO OPERATE CONTINUOUSLY DURING OCCUPIED HOURS. PROVIDE WITH PLUG TYPE DISCONNECT.											



GENERAL NOTES
(NOT ALL NOTES APPLY)

- REFERENCE SHEET M101 FOR GENERAL NOTES, SYMBOLS, AND ABBREVIATIONS.
- PROVIDE TURNING VANES FOR ALL SUPPLY DUCT ELBOWS.
- CONTRACTOR SHALL VERIFY EXACT CONDITIONS OF EXISTING SPACE AND COORDINATE EXACT DUCT ROUTING WITH EXISTING CONDITIONS AND CONSTRAINTS.
- FIRE DAMPERS SHALL BE PROVIDED AT ANY DUCTWORK PENETRATION OF A FIRE RATED ASSEMBLY.

KEYED NOTES:

- EXISTING SUPPLY DIFFUSERS AND RETURN GRILLES IN THIS AREA TO REMAIN. FIELD VERIFY EXACT LOCATIONS.
- ROUTE 16" ROUND EXHAUST DUCT TO EXTERIOR WALL AND TERMINATE WITH WALL CAP. EXHAUST TERMINATION SHALL MAINTAIN MINIMUM 10'-0" CLEARANCE FROM ALL MECHANICAL AIR INTAKES AND BUILDING OPENINGS. EXHAUST TERMINATION SHALL BE A MINIMUM 12'-0" ABOVE WALL TOP.
- REDUCATE EXISTING FIBERGLASS FIBER TO LOCATION SHOWN.
- PROVIDE HEALTHY AIR MODEL HA-SCE-G2 EXHAUST SOURCE CAPTURE FAN-FILTER UNIT. ROUTE #10 EXHAUST DUCT AND CONNECT TO EXHAUST DUCTWORK ABOVE CEILING. WHEN IN USE, INLET HOSES SHALL BE LOCATED NOT LESS THAN 12" HORIZONTALLY AND VERTICALLY FROM THE POINT OF CHEMICAL APPLICATION AT WALL STATION. BALANCE EXHAUST RATE OF EACH HOSE TO MINIMUM 50 CFM.
- INTENT IS TO PROVIDE NEW SUPPLY DUCTWORK ROUTED OVER NEW STRUCTURAL BEAM. CONNECT EXISTING BRANCH DUCTWORK FROM EXISTING DIFFUSERS TO NEW SUPPLY DUCT AS INDICATED. FIELD VERIFY EXACT LOCATION.
- EXISTING FAN COIL UNIT AND ASSOCIATED DUCTWORK SERVING SPACE TO REMAIN. BALANCE OUTDOOR AIRFLOW TO 425 CFM. IF EXISTING UNIT CANNOT ACHIEVE OUTDOOR AIRFLOW INDICATED, CONTACT ENGINEER IMMEDIATELY.
- EXISTING RESTROOM EXHAUST FAN TO REMAIN.
- PROVIDE 24"x12" CEILING TRANSFER GRILLES ON BOTH SIDES OF WALL. TITLE MODEL 359F OR APPROVED EQUAL. PROVIDE COMBINATION FRESMOKE DAMPER AT PENETRATION OF RATED WALL.
- CONNECT NEW SUPPLY DUCTWORK TO SUPPLY MAIN. FIELD VERIFY EXACT LOCATION.

www.collinsandwebb.com

collins webb ARCHITECTURE

307B SW Market Street, Lee's Summit, Missouri 64083 | 816.249.2270

JOHN KNOX VILLAGE - SALON

1001 NW CHIPMAN RD SUITE 123
LEE'S SUMMIT, MO 64081

COPYRIGHT © BY
COLLINS WEBB
ARCHITECTURE, LLC

REVISION DATES:
2 Revision 2 11/02/2023

PROFESSIONAL SEAL
M201
ISSUE DATE: 28 APR 2023
COLLINS WEBB #: 22118

PERMIT SET