

Nov 01, 2023 -- 3:39pm -- USER Kevin Whiteside
C:\Users\KevinWhiteside\OneDrive\Engineering\Dropbox\5BY5 ACTIVE PROJECTS\202300039 Crash Champions Lees Summit Bldg B -- Rose\Bldg-CAD\PLUM.dwg
CONSTRUCTION CO., INC. AND IS LOANED IN CONFIDENCE WITH THE UNDERSTANDING THAT IT IS NOT TO BE COPIED OR REPRODUCED WITHOUT THE EXPRESS WRITTEN PERMISSION OF, AND THAT NEITHER THE DOCUMENT NOR THE INFORMATION CONTAINED THEREIN WILL BE USED ADVERSELY TO ROSE DESIGN GROUP, INC. ALL PATENT RIGHTS ARE RESERVED.

LINETYPES LEGEND:

- NEW — ABOVE SLAB
- - - NEW — BELOW SLAB
- EXISTING — ABOVE SLAB
- - - EXISTING — BELOW SLAB
- - - - DEMOLITION

PIPING LEGEND:

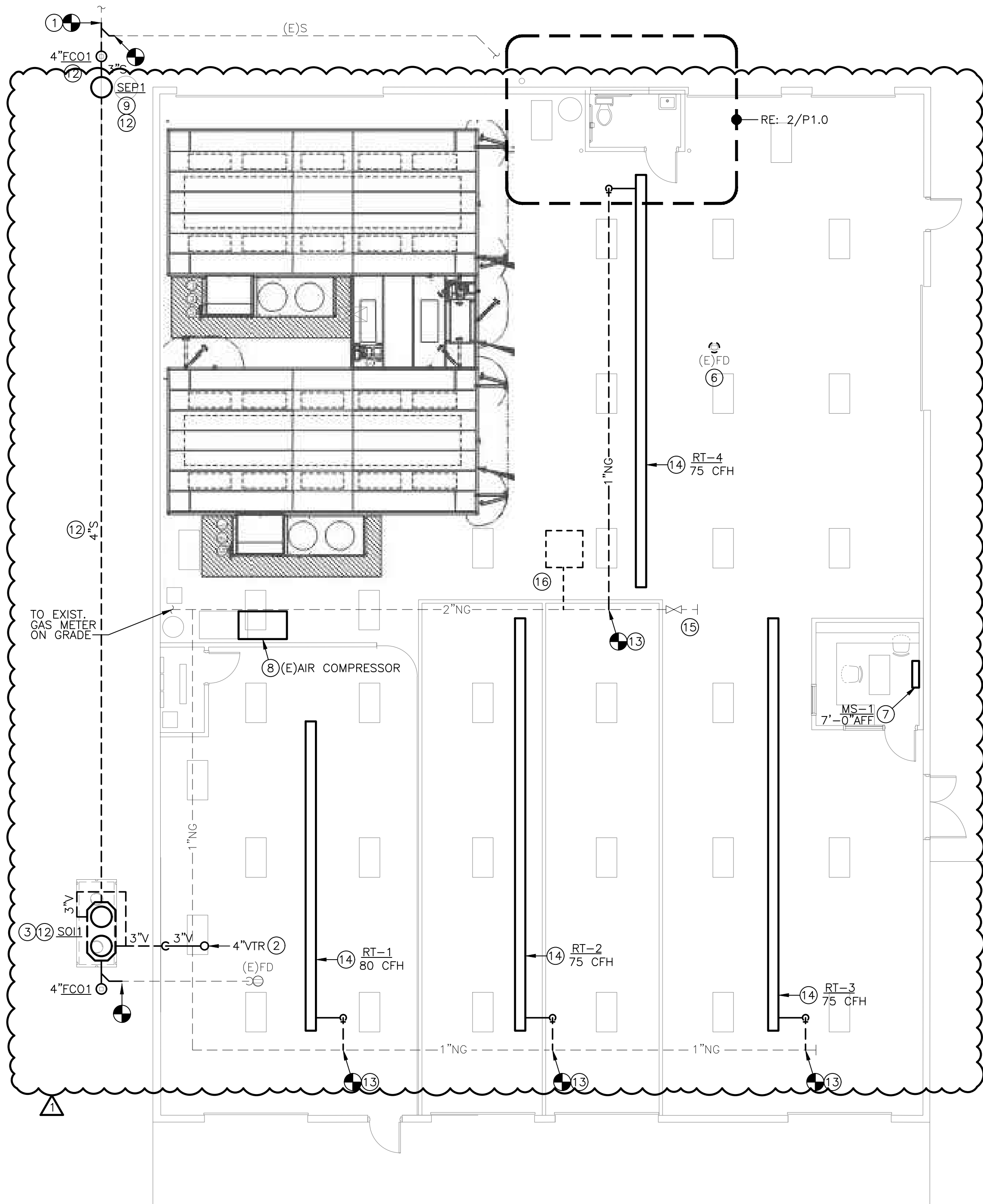
- ↘ ELBOW DOWN
- ↗ ELBOW UP
- ⊘ P-TRAP
- ↘ TEE DOWN
- ↗ ELBOW UP
- ⌵ SHUT-OFF VALVE (GENERIC)
- ⌵ BALL VALVE
- ⌵ GLOBE VALVE
- ⌵ BUTTERFLY VALVE
- ⌵ GATE VALVE
- ⌵ CHECK VALVE
- ⌵ BALANCING VALVE
- ⌵ PRESSURE REDUCING VALVE
- ⌵ GAS COCK
- ⌵ WYE-STRAINER
- ⌵ UNION
- ⌵ FLANGE
- ⌵ RELIEF VALVE
- ⌵ AIR VENT (MANUAL/AUTOMATIC)
- ⌵ FLOW DIRECTION
- PIPE BREAK / CONTINUATION
- FLOOR DRAIN
- FLOOR SINK
- FLOOR CLEANOUT
- + HOSE BIBB

ANNOTATION LEGEND:

- ABC-1 EQUIPMENT / FIXTURE TAG
- ⊖ PLAN NOTE
- ⊙ CONNECT TO EXISTING

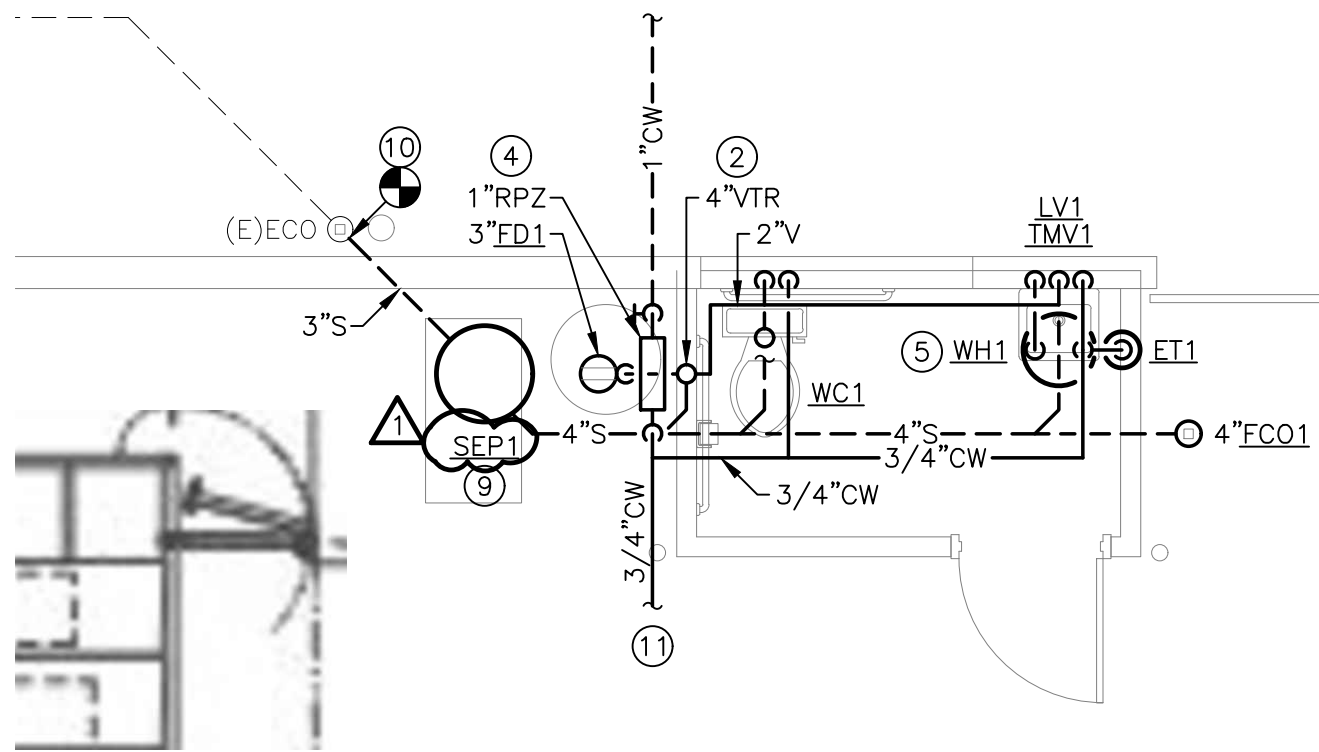
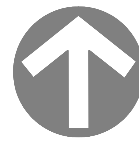
ABBREVIATIONS LEGEND:

- AFF ABOVE FINISHED FLOOR
- CW DOMESTIC COLD WATER
- (E) EXISTING
- ECO EXTERIOR CLEANOUT
- ET EXPANSION TANK
- FCO FLOOR CLEANOUT
- FD FLOOR DRAIN
- FT.WG FEET WATER GAUGE
- GPM GALLONS PER MINUTE
- HB HOSE BIBB
- HP HORSEPOWER
- IE INVERT ELEVATION
- LV LAVATORY
- MAX MAXIMUM
- MIN MINIMUM
- NHB NON-FREEZE HOSE BIBB
- QTY QUANTITY
- RPZ REDUCED PRESSURE ZONE
- RPZ BACKFLOW PREVENTER
- S SANITARY WASTE
- SOI SAND/OIL INTERCEPTOR
- SP SEWAGE PUMP
- TMV THERMOSTATIC MIXING VALVE
- TRA TO ROOF ABOVE
- V VENT
- WC WATER CLOSET
- WH WATER HEATER
- WCO WALL CLEANOUT



1 PLUMBING PLAN

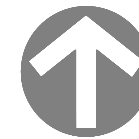
SCALE: 1/8" = 1'-0"



2 ENLARGED PLUMBING PLAN

NEW RESTROOM

SCALE: 1/4" = 1'-0"



PLUMBING PLAN NOTES:

- CONNECT TO MINIMUM 4" EXISTING SANITARY. FIELD VERIFY EXACT LOCATION, SIZE, FLOW DIRECTION, AND INVERT ELEVATION AT CONNECTION TO EXISTING.
- ROUTE 4"V UP THROUGH ROOF ("VTR"). INSTALL AT A MINIMUM OF 10'-0" FROM ALL AIR INTAKES AND BUILDING OPENINGS.
- INSTALL SAND/OIL INTERCEPTOR BELOW GRADE. PROVIDE ACCESSORIES AS RECOMMENDED BY THE MANUFACTURER, WHICH MAY INCLUDE SAMPLING PORT, MANHOLE RISER EXTENSIONS, ETC).
- PROVIDE NEW 1" DOMESTIC WATER SERVICE ENTRANCE. REFER TO DETAIL 1/P2.0 FOR MORE INFORMATION.
- INSTALL WATER HEATER ABOVE CEILING. PROVIDE PIPING CONNECTIONS, VALVES, AND SPECIALS PER DETAIL 2/P2.0 AND MANUFACTURER'S INSTALLATION INSTRUCTIONS.
- REMOVE EXISTING FLOOR DRAIN. CAP ITS ASSOCIATED BRANCH PIPING AT ACTIVE MAIN.
- PROVIDE CONDENSATE DRAIN WITH P-TRAP, FULL SIZE OF CONNECTION AT WALL-MOUNTED MINI-SPLIT EVAPORATOR COIL. ROUTE CONDENSATE PIPING CONCEALED IN WALL CAVITY, AND DISCHARGE OUT WALL AT 1'-6" AFG TO SPLASH BLOCK ON GRADE.
- INSTALL SAVED AIR COMPRESSOR AT NEW LOCATION. PROVIDE NEW COMPRESSED AIR PIPING FROM CONNECTION AT COMPRESSOR TO EXISTING MAIN, OF SAME SIZE AS EXISTING MAIN. FIELD VERIFY SIZE AND LOCATION OF CONNECTION AT EXISTING. COMPRESSED AIR PIPING SHALL BE GALVANIZED STEEL PIPE WITH WALLEABLE IRON SCREWED FITTINGS. INSTALL VALVES, FILTERS, REGULATORS, AND OTHER FITTINGS FURNISHED BY THE OWNER AS A PART OF THE COMPRESSED AIR SYSTEM. AT THE COMPLETION OF THE WORK, LEAVE A COMPLETE AND OPERATING SYSTEM, CONFORMING TO THE LATEST EDITION OF THE OSHA CODE.
- COORDINATE FINAL LOCATION OF SEWAGE PUMP WITH EXISTING CONDITIONS AND OTHER TRADES. INSTALL PER MANUFACTURER'S REQUIREMENTS.
- CONNECT NEW 3" SANITARY FROM SEWAGE PUMP DISCHARGE INTO EXISTING CLEANOUT. FIELD VERIFY EXACT LOCATION, SIZE, FLOW DIRECTION, AND INVERT ELEVATION AT CONNECTION TO EXISTING.
- CONNECT TO EXISTING COLD WATER MAIN AND/OR EXISTING FIXTURES. FIELD VERIFY LOCATION AND SIZES AT CONNECTIONS TO EXISTING.
- COORDINATE NEW INSTALLATION WITH EXISTING WATER UTILITY AND GAS UTILITY LINES ALONG WEST SIDE OF BUILDING.
- CONNECT NEW NATURAL GAS LINE OF SIZE INDICATED TO EXISTING NATURAL GAS PIPE. COORDINATE EXACT CONNECTIONS IN FIELD.
- PROVIDE 1" GAS TO RADIANT HEATER. PROVIDE SHUT-OFF VALVE, PRESSURE REGULATOR, DIRT LEG, AND FLEXIBLE CONNECTION. MAKE CONNECTIONS TO UNIT HEATER AS REQUIRED. SET REGULATOR TO PROVIDE 11" W.C. AT UNIT. REFER TO HEATER GAS CONNECTION DETAIL 3/P2.0.
- EXISTING SHUT OFF VALVE TO REMAIN. FIELD VERIFY EXACT LOCATION.
- REMOVE EXISTING UNIT HEATER AND GAS LINE BACK TO EXISTING GAS MAIN. CAP GAS PIPE AT MAIN AS NEEDED.



ARCHITECTS ■ PLANNERS

A Division of Rose Design Build

913-782-0777 FAX: 913-782-0998
P.O. BOX 100 OLATHE, KS 66051
MISSOURI STATE CERTIFICATE OF www.BuildWithRose.com
AUTHORITY # 2008034845



BUILDING B INTERIOR MODIFICATIONS:

CRASH CHAMPIONS

UNIT B 451 SE OLDHAM PARKWAY

LEE'S SUMMIT, MISSOURI

NO.	DESCRIPTION	DATE
---	FOR PERMIT	05.10.2023
1	CITY COMMENT	10/05/2023

PROJECT NUMBER 23016
DATE ISSUED: 05 / 10 / 2023

SHEET NUMBER

P1.0

PLUMBING PLANS

5BY5
ENGINEERS

1100 Main Street, 4th Floor
Kansas City, MO 64105
Missouri COA: 2017040776
913-689-9449
contact@5by5eng.com
5by5eng.com

