

OVERALL LIFE SAFETY PLAN
3/32" = 1'-0"

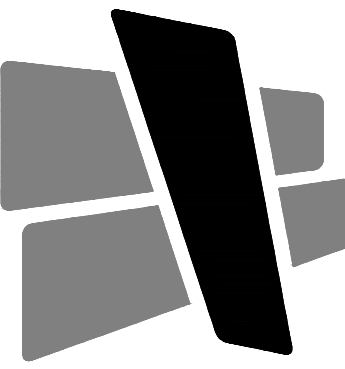
KEYED NOTES

- 1. EXIT, EXIT SIGN, AND EMERGENCY LIGHTING ABOVE DOOR
INTERIOR WITH BATTERY BACKUP. EXTERIOR EGRESS
LIGHTING ABOVE DOOR TIED TO BATTERY BACK UP.
- 2. PROPOSED FIRE EXTINGUISHER LOCATION. VERIFY WITH FIRE
MARSHAL. FINAL QUANTITY AND LOCATIONS TO BE
DETERMINED WITH FINAL RACKING PLAN AND FIRE
DEPARTMENT REVIEW.
- 3. EXISTING PUMP ROOM.
- 4. 1 HOUR RATED DEMISING WALL, CENTERED ON COLUMN
LINE.

CODE ANALYSIS

| APPLICABLE CODES | |
|---|--|
| BUILDING CODE | 2018 INTERNATIONAL BUILDING CODE |
| PLUMBING CODE | 2017 INTERNATIONAL PLUMBING CODE |
| ELECTRICAL CODE | 2017 NATIONAL ELECTRICAL CODE |
| FIRE CODE | 2018 INTERNATIONAL FIRE CODE |
| MECHANICAL CODE | 2014 INTERNATIONAL MECHANICAL CODE |
| FUEL GAS CODE | 2018 FUEL GAS CODE |
| HANDICAPPED ACCESSIBILITY CODE | 2009 ANSI A117.1 ADA ACCESSIBILITY GUIDELINES |
| OCCUPANCY (OVERALL BUILDING) | |
| CLASSIFICATION (302.1): | S-1 |
| OCCUPANCY (TENANT SPACE) | |
| CLASSIFICATION (302.1): | S-1 |
| ACCESSORY USES (508.2.1): | B |
| NON-SEPARATED USES (508.3.2): | N/A |
| SEPARATED USES (508.3.3): | N/A |
| AUTOMATIC SPRINKLER SYSTEM | |
| SPRINKLER SYSTEM REQUIRED (903): | YES |
| SPRINKLER SYSTEM PROVIDED: | YES |
| ALLOWABLE BUILDING HEIGHT | |
| TABULAR HEIGHT (503): | 2 STORY |
| ALLOWABLE BUILDING AREA | |
| TABULAR AREA (503): | 17,500 SF |
| BUILDING AREA INCREASE | |
| INCREASE FOR SPRINKLERED BUILDING (506.3): | 300% |
| UNLIMITED AREA (507): | UNLIMITED |
| FRONTAGE INCREASE (506.2): | N/A |
| $If = (F/P - .25) \times W / 30$ | |
| TOTAL ALLOWABLE AREA WITH INCREASES: | |
| $A_2 = A_1 + (A_1 \times If) + (A_1 \times Is)$ | |
| $A_2 = \text{FILL IN}$ | |
| ACTUAL BUILDING HEIGHT AND AREA | |
| BUILDING AREA: | 131,615 SF |
| BUILDING HEIGHT (FEET / # FLOORS): | 42' / 1 FLR |
| TENANT AREA: | 45,438 SF |
| TABULAR OCCUPANT LOAD (1004.1.2) | |
| WAREHOUSE/STORAGE: 41,934/500 | 84 |
| OFFICE: 3,504/100 | 36 |
| TABULAR OCCUPANTS | 120 |
| ACTUAL OCCUPANT LOAD (1004.1.2) | |
| | 120 |
| FIRE RESISTIVE REQUIREMENTS (601 AND 602) | |
| CONSTRUCTION TYPE: | II-B |
| STRUCTURAL FRAME: | NR |
| EXTERIOR BEARING WALLS: | NR |
| INTERIOR BEARING WALLS: | NR |
| EXTERIOR NON-BEARING WALLS: | NR |
| INTERIOR NON-BEARING WALLS: | NR |
| FLOOR CONSTRUCTION: | NR |
| ROOF CONSTRUCTION: | NR |
| SHAFTS: | N/A |

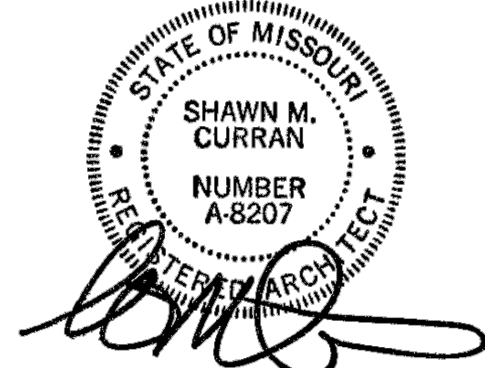
| FIRE RESISTANCE RATED CONSTRUCTION (704, 601, 602) | | |
|---|----------|--|
| RATED EXTERIOR WALLS: | N/A | |
| FIRE SEPARATION DISTANCE | 60+ | |
| UNPROTECTED OPENING AREA: | N/A | |
| INTERIOR WALL AND CEILING FINISH REQUIREMENTS (803) | | |
| SEE FINISH SCHEDULE FOR MATERIALS | | |
| ALL MATERIALS ARE CLASS A RATED | | |
| FIRE PROTECTION SYSTEMS | | |
| STANDPIPE SYSTEM (905): | YES | |
| PORTABLE FIRE EXTINGUISHERS (906.1): | SEE PLAN | |
| FIRE ALARM AND DETECTION SYSTEMS (907): | YES | |
| SMOKE CONTROL SYSTEMS (909): | N/A | |
| SMOKE AND HEAT VENTS (910): | N/A | |
| EGRESS | | |
| MINIMUM WIDTH FACTOR (1005.1): | 0.15" | |
| REQUIRED MINIMUM WIDTH FROM SPACE (1005.1): | 14.4" | |
| MINIMUM NUMBER OF EXITS (1015): | 1 | |
| ACTUAL NUMBER OF EXITS: | 4 | |
| ACTUAL WIDTH OF EXITS: | 180" | |
| ALLOWABLE TRAVEL DISTANCE (1016.2): | 400' | |
| CORRIDOR CONSTRUCTION (1018.1): | N/R | |
| MINIMUM CORRIDOR WIDTH (1018.2): | 44" | |
| MAXIMUM DEAD END CORRIDOR (1018.4): | 50' | |
| PLUMBING FIXTURE COUNTS | | |
| REQUIRED FIXTURES S-1 (50 / 50 SPLIT MEN/WOMEN) | | |
| MEN-42 OCCUPANTS | 1 | |
| TOILETS | 1 | |
| LAVATORIES | 1 | |
| WOMEN-42 OCCUPANTS | 1 | |
| TOILETS | 1 | |
| LAVATORIES | 1 | |
| SERVICE SINKS | 1 | |
| DRINKING FOUNTAINS | 1 | |
| REQUIRED FIXTURES B (50 / 50 SPLIT MEN/WOMEN) | | |
| MEN-18 OCCUPANTS | 1 | |
| TOILETS | 1 | |
| LAVATORIES | 1 | |
| WOMEN-18 OCCUPANTS | 1 | |
| TOILETS | 1 | |
| LAVATORIES | 1 | |
| SERVICE SINKS | 1 | |
| DRINKING FOUNTAINS | 1 | |
| PROVIDED FIXTURES | | |
| MEN | 2 | |
| TOILETS | 1 | |
| URINAL | 3 | |
| LAVATORIES | 3 | |
| WOMEN | 3 | |
| TOILETS | 3 | |
| LAVATORIES | 3 | |
| SERVICE SINKS | 1 | |
| DRINKING FOUNTAINS | 1 | |



CURRAN
ARCHITECTURE

5719 LAWTON LOOP E. DR. #212
INDIANAPOLIS, IN 46216
O :: 317 . 288 . 0681
F :: 317 . 288 . 0753

CERTIFICATION



THIS DRAWING AND THE IDEAS, DESIGNS
AND CONCEPTS CONTAINED HEREIN ARE
THE EXCLUSIVE INTELLECTUAL PROPERTY
OF CURRAN ARCHITECTURE, AND ARE NOT
TO BE USED OR REPRODUCED, WHOLE OR
IN PART, WITHOUT THE WRITTEN
CONSENT OF CURRAN ARCHITECTURE.
© COPYRIGHT 2023, CURRAN ARCHITECTURE

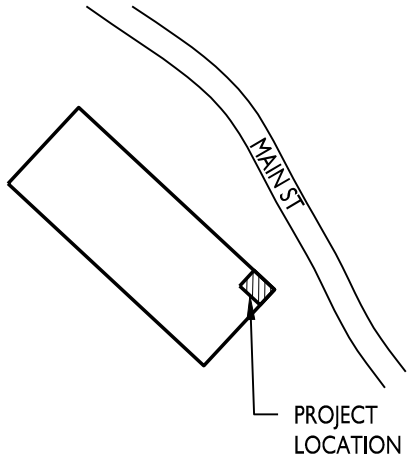
PROJECT INFORMATION

MIDWEST DISTRIBUTION TI

1220 NW MAIN STREET
LEE'S SUMMIT, MO 64086

ISSUE DATES

| | |
|-----------------------|----------|
| PERMIT SET | 08.29.23 |
| PERMIT REVIEW COMMENT | 09.11.23 |



KEY PLAN

230139

LIFE SAFETY PLAN

A100