

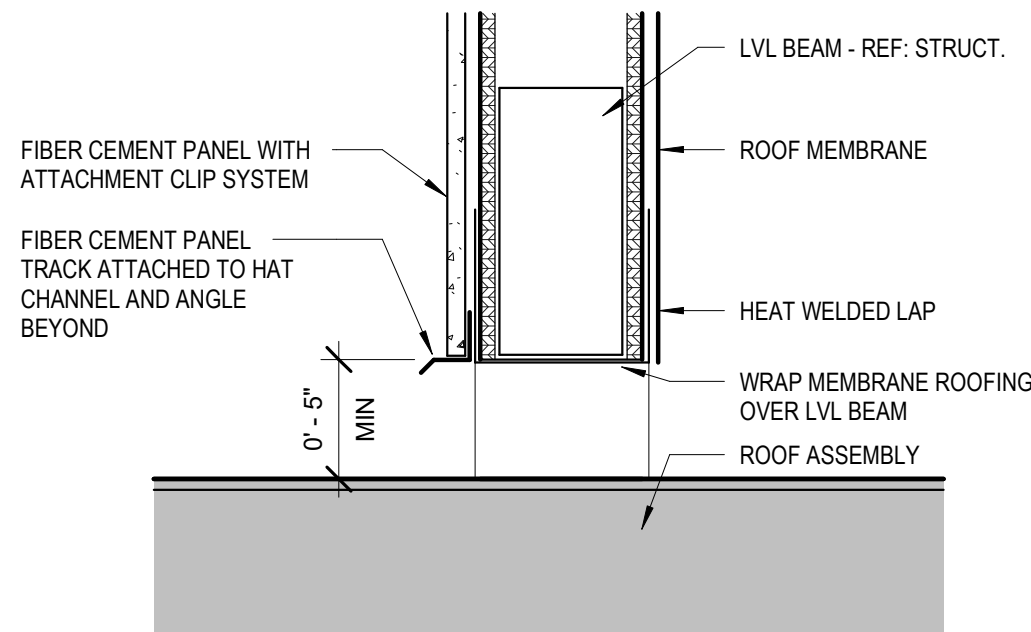
1 ROOF PLAN
1/2" = 1'-0"

ROOF PLAN GENERAL NOTES

- A. REFER TO SHELL STRUCTURAL DRAWINGS FOR ROOF FRAMING AND DETAILS FOR ROOF PENETRATIONS AND LOADING.
B. ROOF TOP HVAC UNITS AND CURBS ARE PROVIDED AS PART OF SHELL.
C. ALUMINUM EQUIPMENT STAND SUPPORTS MANUFACTURED BY AVCOA CORPORATION OF FORT LAUDERDALE, FLORIDA OR APPROVED EQUAL. 4 RAILS AT 5'-0" EACH AND 5'-0" EACH WITH 2 SUPPORTS EACH RAIL. 5'-0" RAILS TO BE 31" APART AT COOLER/FREEZER CONDENSERS AND 5'-0" RAILS W/ SUPPORTS TO BE 24" APART AT ICE MACHINE CONDENSERS. STANDS SHALL PROVIDE 18" MINIMUM CLEARANCE (48" O.C. AT ICE MAKER CONDENSERS) AND SHALL BE SIZED INSTALLED ACCORDING TO THE MANUFACTURER'S LOAD CHARTS AND PRINTED INSTALLATION DETAILS. CONTACT: 800-266-7212.

MARK	MATERIAL	DESCRIPTION
X-1	THIN BRICK WAINSCOT	CONCRETE STONE VENEER TEXAS STONE DESIGN INC PALO PINTO COBBLE
X-2	CORNICE	EXTERIOR GRADE - SW #6993 "BLACK OF NIGHT"
X-3	SIMULATED WOOD SIDING	FIBER CEMENT PANELS BASE BID: NICHHA, VINTAGE WOOD, BARK, 17-7/8"x5/8" THICK, HORIZ. INSTALL. BID ALTERNATE: JAMES HARDIE, SIERRA 8, TIMBER BARK, 5/16" THICK, HORIZONTAL INSTALL.
X-4	STONE SILL	CHISELED STONE SILL, LIGHT GRAY - CORONADO STONE
X-5	STOREFRONT	DARK BRONZE
X-6	PAINT	SHER-COLOR CUSTOM MATCH, EXTERIOR ULTRADEEP SATIN. COLOR CAST FORMULA: W1 WHITE: COLORANT 02=2, COLORANT 32=2 R4 NEW RED: COLORANT 02=8, COLORANT 32=61, COLORANT 64=1
X-7	PAINT	EXTERIOR GRADE - SW #7019 "GAUNTLET GRAY" (POWDER COAT STEEL IF POSSIBLE)
X-8	THIN BRICK	ARCHITECTURAL CONCRETE BLOCK, THIN BRICK SERIES, OLDCASTLE QUIK BRIK - COLOR AUTUMN BLEND W/ FLASH - 4"

EXTERIOR FINISH SCHEDULE



2 ROOF SCREENING DRAINAGE DETAIL
1 1/2" = 1'-0"

ROOF PLAN KEYNOTES

- 1 SINGLE-PLY MEMBRANE ROOFING OVER RIGID ROOF INSULATION AND ROOF SHEATHING. PROVIDE FLASHING AND COUNTERFLASHING AT ALL NEW PENETRATIONS PER MANUFACTURER'S RECOMMENDATIONS FOR MECHANICALLY FASTENED SYSTEM.
2 NEW MECHANICAL EQUIPMENT. SECURE TO TOP OF DECK PER STRUCTURAL AND PER MANUFACTURER'S REQUIREMENTS. PROVIDE CURB AND CRICKET AS REQUIRED FOR PROPER DRAINAGE. REFERENCE MECHANICAL.
3 PREFINISHED METAL GUTTER AND DOWNSPOUT.
4 PROVIDE TAPERED INSULATION TO SLOPE ROOF AS SHOWN.
5 24"x36" OPENING
6 EXHAUST FAN VENT - REFERENCE MECHANICAL DRAWINGS.
7 DRAINAGE OPENING. LOCATE OVER DRAINAGE VALLEY. REFERENCE DETAIL.
8 ROOF LADDER WITH SIDE RAIL 30" ABOVE TOP OF PARAPET.



SWIG - LEE'S SUMMIT
400 NW CHIPMAN RD, LEE'S SUMMIT, MO 64086



OLSON ARCHITECTURAL GROUP
1916 NW 79TH TERRACE
KANSAS CITY, MO 64151

REVISION SCHEDULE		
No.	Description	Date
1	CITY COMMENTS	9/14/23

SHEET NAME

ROOF PLAN

PROJECT NUMBER	2102
DATE	06/16/2023
DRAWN BY	PJS
CHECKED BY	SDO
SCALE	As indicated

AE131