

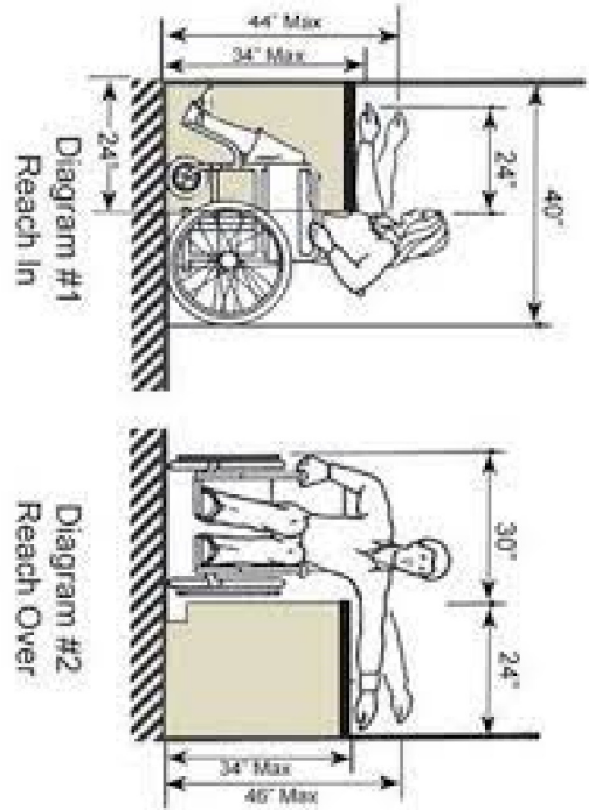
SPECIFICATIONS

GENERAL

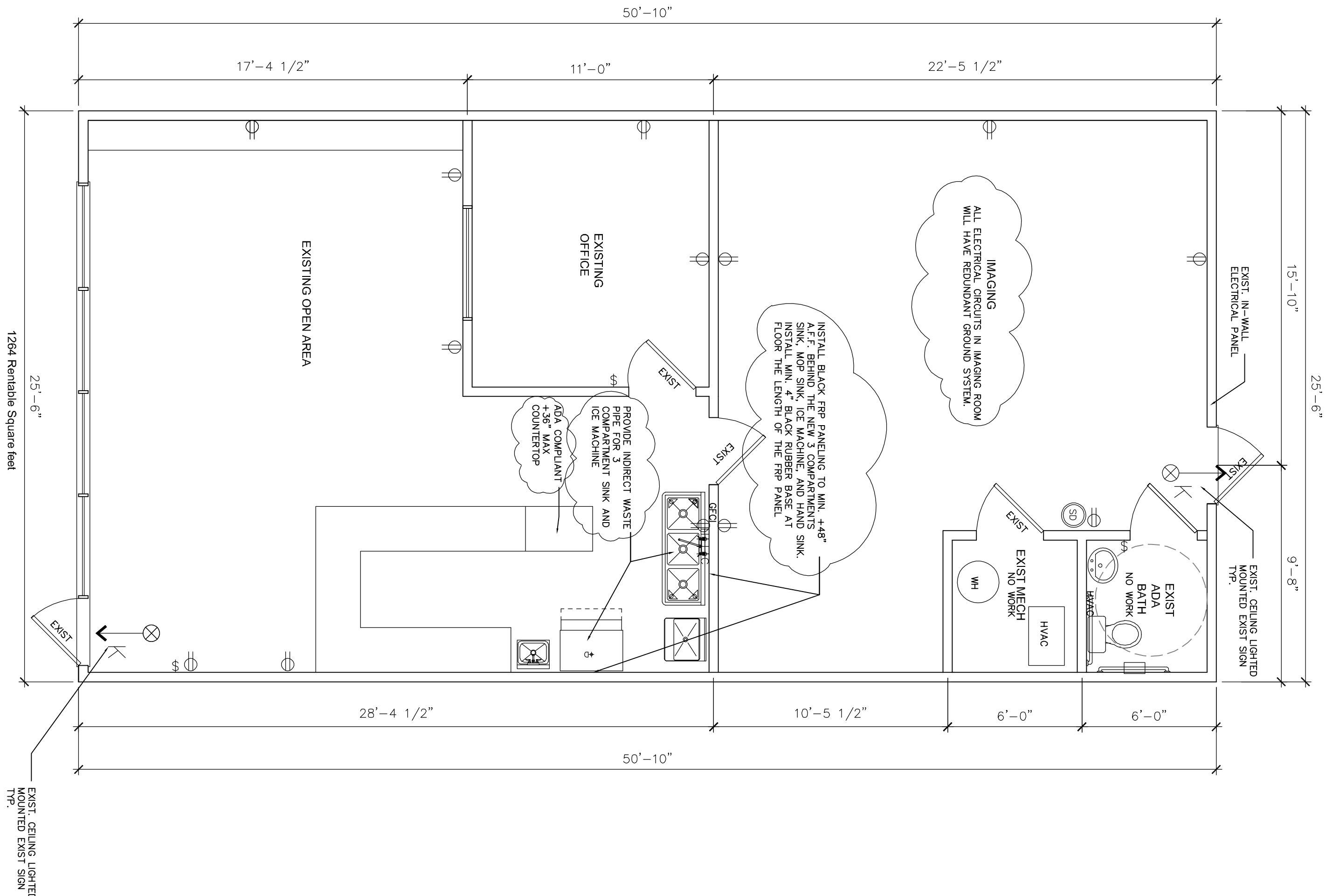
1. All construction shall comply with the 2018 International Residential Code (IRC).
2. The General Contractor is responsible for verifying all existing conditions and dimensions. Contractor shall verify all dimensions and conditions before beginning construction. The General Contractor and each subcontractor is responsible for coordinating his work with other trades. If any changes or deviations from the plans are made during construction, the contractor shall notify the Building Safety Division. The Building Safety Division may require revised drawings or calculations at its discretion.
3. The Contractor shall adhere to the State of Missouri One Call System, 1-800-344-7483, or State of Kansas One Call System, 1-800-344-7233. The person or firm doing excavation on public right-of-way must give notice 10, and obtain information from, utility companies. The Contractor shall notify those companies which have facilities in the near vicinity of the construction to be performed when work commences.

ELECTRICAL LEGEND

- ▼ TELEPHONE RECEPTACLE TYP
- INCANDESCENT RECESSED LIGHT FIXTURE W/S WHITE BAFFLE KIT TYP
- VAPORTIGHT INDUSTRIAL LIGHT BY #A7100DG NATURAL FINISH
- ^{PC} FIXTURE W/PULL CHAIN
- WALL SCONCE BY OWNER
- ^E EXIST. WALL SCONCE TYP.
- ⊙ INCANDESCENT RECESSED LIGHT FIXTURE FOR WET AREAS
- == UNDER CAB KITCHEN TASK LIGHTING TYP.
- ≡ TRACK LIGHTING BY OWNER
- \$ LIGHT SWITCH
- \$^D LIGHT SWITCH W/DIMMER
- Ⓢ CABLE
- Ⓢ CABLE TV OUTLET
- Ⓢ CEILING FAN BY OWNER
- Ⓢ DUPLX OUTLET MOUNTED +42" A.F.F.
- Ⓢ DUPLX OUTLET W/GROUND FAULT INTERRUPTOR
- Ⓢ WATER PROOF DUPLX OUTLET
- Ⓢ CEILING FAN
- Ⓢ SMOKE DETECTOR



ADA COUNTERTOP DIAGRAM



RELEASED FOR CONSTRUCTION
As Noted on Plans Review
Development Services Department
Lee's Summit, Missouri
09/27/2023

1 FLOOR PLAN
1/4"=1'-0"

APPLICABLE CODES:

- 2018 International Building Code
- 2018 International Plumbing Code
- 2018 International Mechanical Code
- 2018 International Fuel Gas Code
- 2018 International Residential Code
- 2018 International Fire Code
- 2017 National Electrical Code
- ICC/ANSI A117.1-2009, Accessible and Usable Buildings and Facilities

APPLICABLE CODES: ALL WORK UNDER THIS CONTRACT SHALL CONFORM WITH THE APPLICABLE CODES, ORDINANCES, AND REGULATIONS OF ALL GOVERNING BODIES INVOLVED. ALL PERMITS AND LICENSES NECESSARY FOR THE PROPER EXECUTION OF THE WORK SHALL BE OBTAINED AND PAID FOR BY THE CONTRACTOR (NVS-05).

GENERAL NOTE:

WRITTEN DIMENSIONS ON THESE DRAWINGS SHALL TAKE PRECEDENT OVER SCALED DIMENSIONS. CONTRACTORS SHALL VERIFY AND BE RESPONSIBLE FOR ALL DIMENSIONS AND CONDITIONS ON THE JOB AND THE DESIGNER'S DESIGN AND CONDITIONS SHOWN BY THESE DRAWINGS PRIOR TO ANY CONSTRUCTION.

NOTICE DUTY OF COOPERATION

Release of these plans contemplates further cooperation among the owner, the contractor, and the designer. Design and construction are complex. Although the designer and his contractors have performed their services with due care and diligence, they cannot warrant or guarantee the accuracy or completeness of the drawings. The designer shall be obligated. Any ambiguity or discrepancy discovered by the use of these plans shall be reported immediately to the designer. A failure to cooperate by a single notice to the designer shall relieve the designer from responsibility for all consequences. Changes made from the plans without the consent of the designer are unauthorized, and shall constitute a breach of contract. The designer shall not be responsible for any errors, omissions, or delays in the construction of the project. The designer shall not be responsible for any damages, claims, or liabilities arising out of such changes. Therefore, the owner and contractor shall check and verify all dimensions.

GENERAL NOTES

ALL WORK HEREON SHALL STRICTLY CONFORM TO THE 218 EDITION OF THE INTERNATIONAL RESIDENTIAL CODE (IRC) AND GENERAL NOTES:

ZONING: CP-2

EXISTING DROP CEILING GRID AND LIGHTING FIXTURES TO REMAIN.

ALL EXISTING FIRE ALARM AND EXIT SIGNS TO REMAIN

EXISTING ELECTRICAL OUTLETS SHOWN ON PLAN TO REMAIN. NEW PLUMBING FIXTURES SHOWN ON PLAN TO BE INSTALLED PER 2018 INTERNATIONAL PLUMBING CODE

ANY FOOD-HANDLING EQUIPMENT CLEAR WATER WASTE, HUMIDIFIERS, DISHWASHING MACHINES AND UTENSILS POTS PANS AND DISHWASHING SINKS SHALL DISCHARGE THROUGH AN INDIRECT WASTE PIPE AS SPECIFIED ON SECTIONS 802.1.1 THROUGH 802.1.8 OF THE 2018 CODE

PROVIDE A MINIMUM OF ONE (1) 24" 108-C FIRE EXTINGUISHER AT A CONSPICUOUS LOCATION.

2017 NEC Article 517.13 Grounding of Receptacles and Fixed Electrical Equipment in Patient Care Spaces Wiring in patient care spaces shall comply with 517.13(A) and (B).

ABBREVIATIONS

A.F.F.	above finished floor	MIN.	minimum
C.C.A.	chromated copper arsenate	MICRO	microphone
C.L.	control joint	M.O.	masonry opening
C.L.	center line	N.I.C.	not in contract
C.G.	ceiling	NO.	number
C.M.U.	concrete masonry unit	NOM.	nominal
C.O.	crossed opening	N.T.S.	not to scale
C.O.	concrete	O.D.	on center
C.O.	concrete	O.H.	overhead/overhanging
C.T.	ceramic tile	O.P.P.	opposite
D.	dryer	P.F.	poor
D.H.	double-hung	P.S.I.	pounds square inch
DN.	down	P.S.F.	pounds square foot
D.S.	downspout	R.	riser
E.L.	each	REC'D	required
E.L.S.	each side	REF.	refer (to)
E.L.S.	each side	REQ'D	required
E.L.S.	each side	R.M.	room
E.L.S.	each side	R.O.	rough opening
E.L.	elevation	S.C.	solid core
E.O.	equal	S.D.	square foot
E.W.	each way	S.F.	square feet
F.B.O.	floor drain	SM.	similar
F.D.	face of concrete	SQ.	square
F.O.C.	face of concrete	S.S.	stainless steel
F.O.C.	face of concrete	S.D.	square foot
F.R.	free-rotation	T.	tread
G.A.	garage	T.C.	trash compactor
G.A.L.V.	galvanized	T.O.B.	top of beam (steel)
G.P.P.	gypsum board	T.O.C.	top of concrete
H.B.	hose bibb	T.O.W.	top of wall
H.C.	hollow core	T.V.	television
H.K.	hollow metal	TYP.	typical
H.T.	height	U.N.O.	unless noted otherwise
H.T.	height	W.I.	water in closet
H.T.	height	W.C.	water heater
H.T.	height	W.R.	water resistant
H.T.	height	W.W.F.	welded wire fabric
L.V.L.	laminated veneer lumber	1ST	first
MAX.	maximum	2ND	second
MCH.	mechanical		
MFR.	manufacturer		

DRAWING SCHEDULE:
A-1 FLOOR PLAN, GENERAL PROJECT INFO.

A T E N A N T I M P R O V E M E N T F O R :

Baby Bump Imaging

1002 SW BLUE BAY PARKWAY, LEES SUMMIT MO 64083

SITE PLAN

studio 605

1512 423 8340

1512 423 8340

1512 423 8340

1512 423 8340

1512 423 8340

1512 423 8340

1512 423 8340