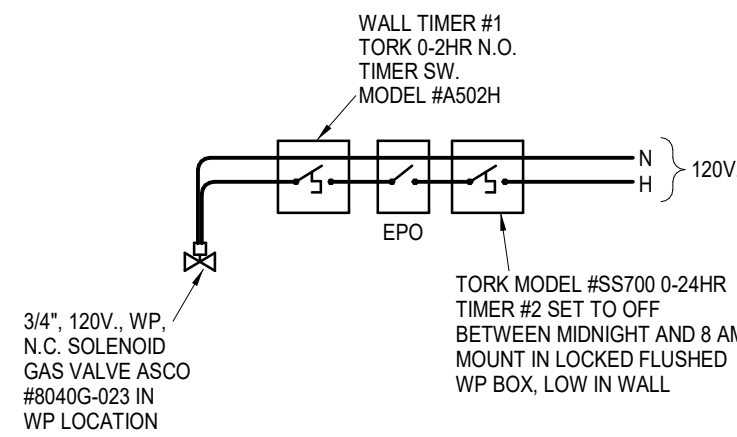
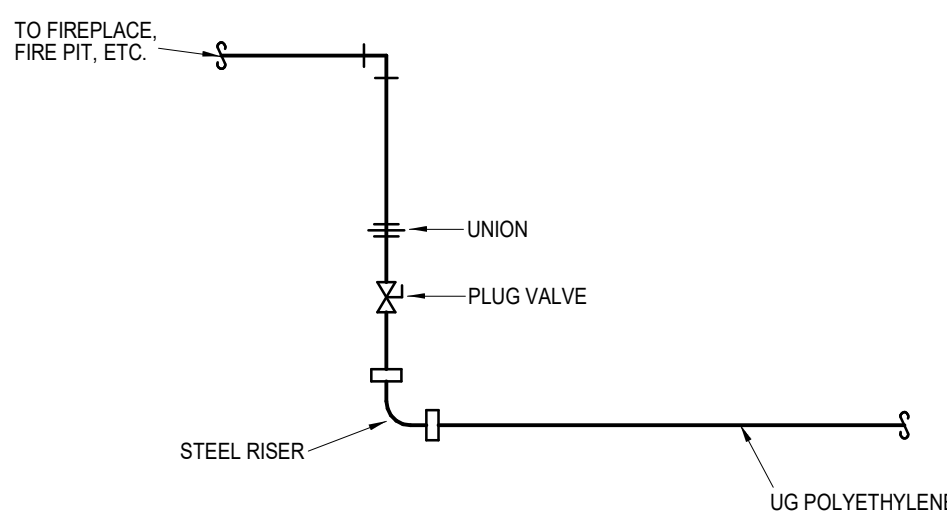


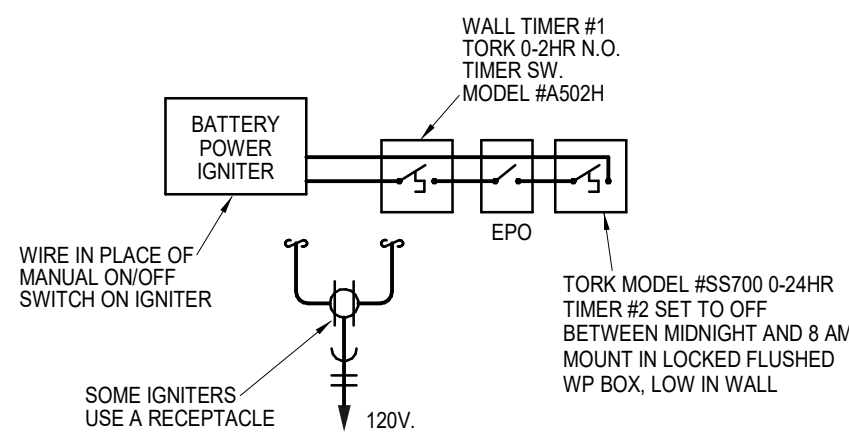
PIPING SCHEMATIC



CONTROL SCHEMATIC (GRILL)



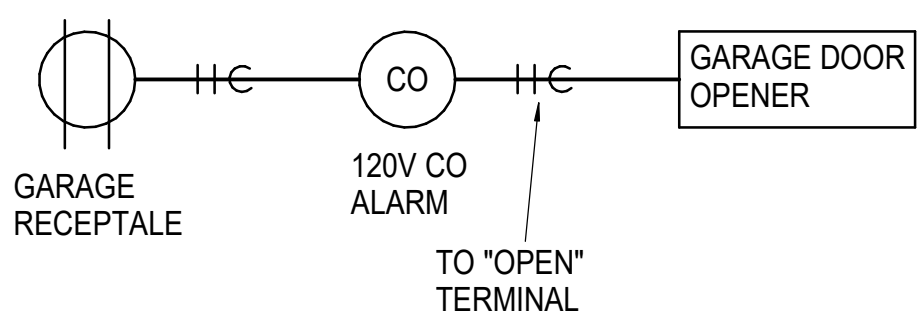
PIPING SCHEMATIC



CONTROL SCHEMATIC (FIRE PIT)

1 GAS GRILL/FIRE PIT DETAIL

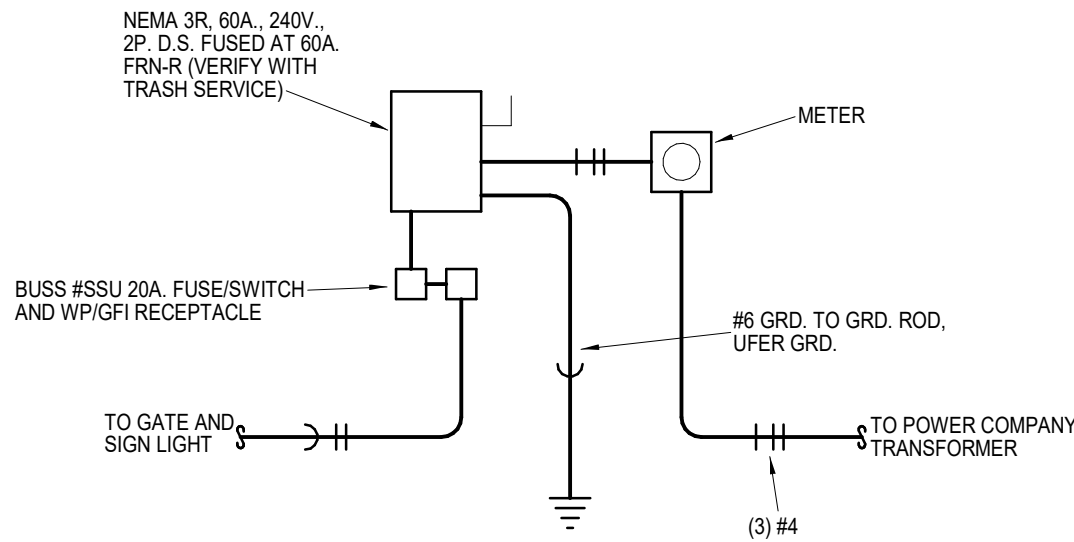
NOT TO SCALE



SEQUENCE:
GARAGE DOOR
TO OPEN WHEN
CO SENSOR IS
TRIPPED

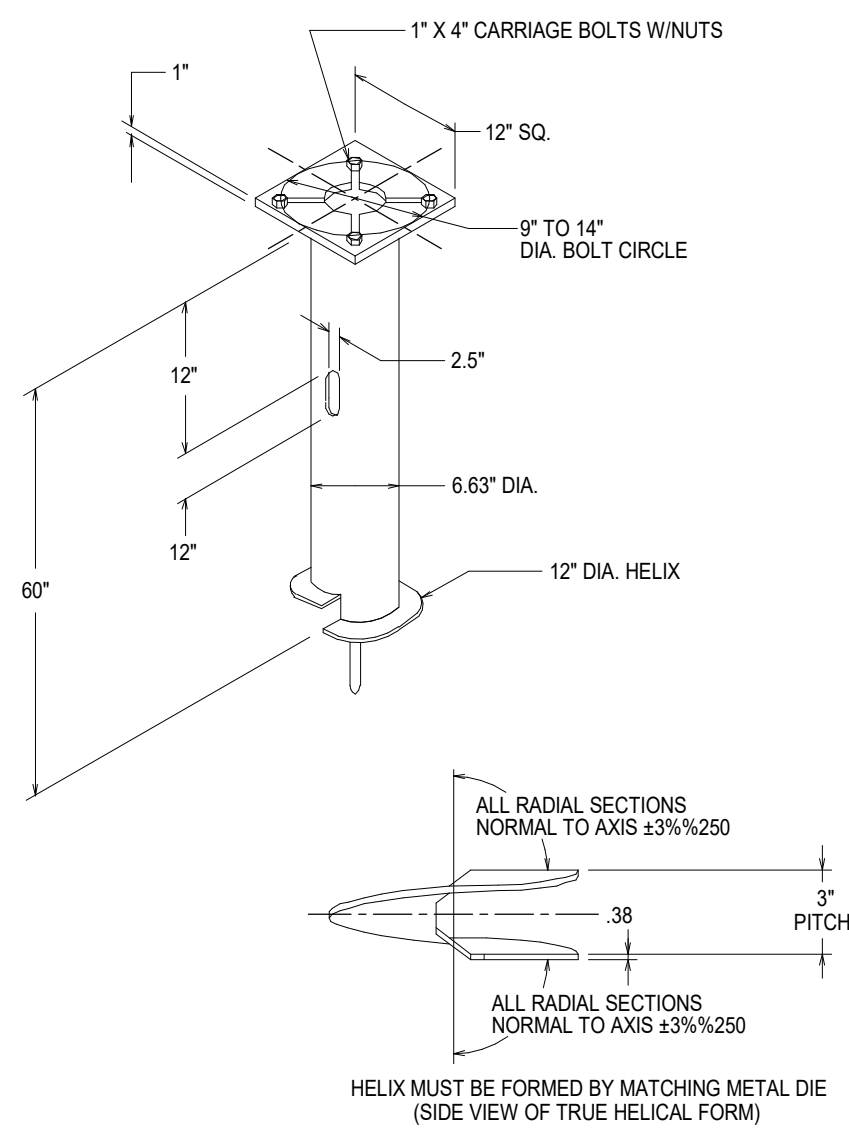
4 GARAGE CARBON MONOXIDE SENSOR DOOR CONNECTION DETAIL

NOT TO SCALE



2 COMPACTOR ELECTRICAL SERVICE DETAIL

NOT TO SCALE

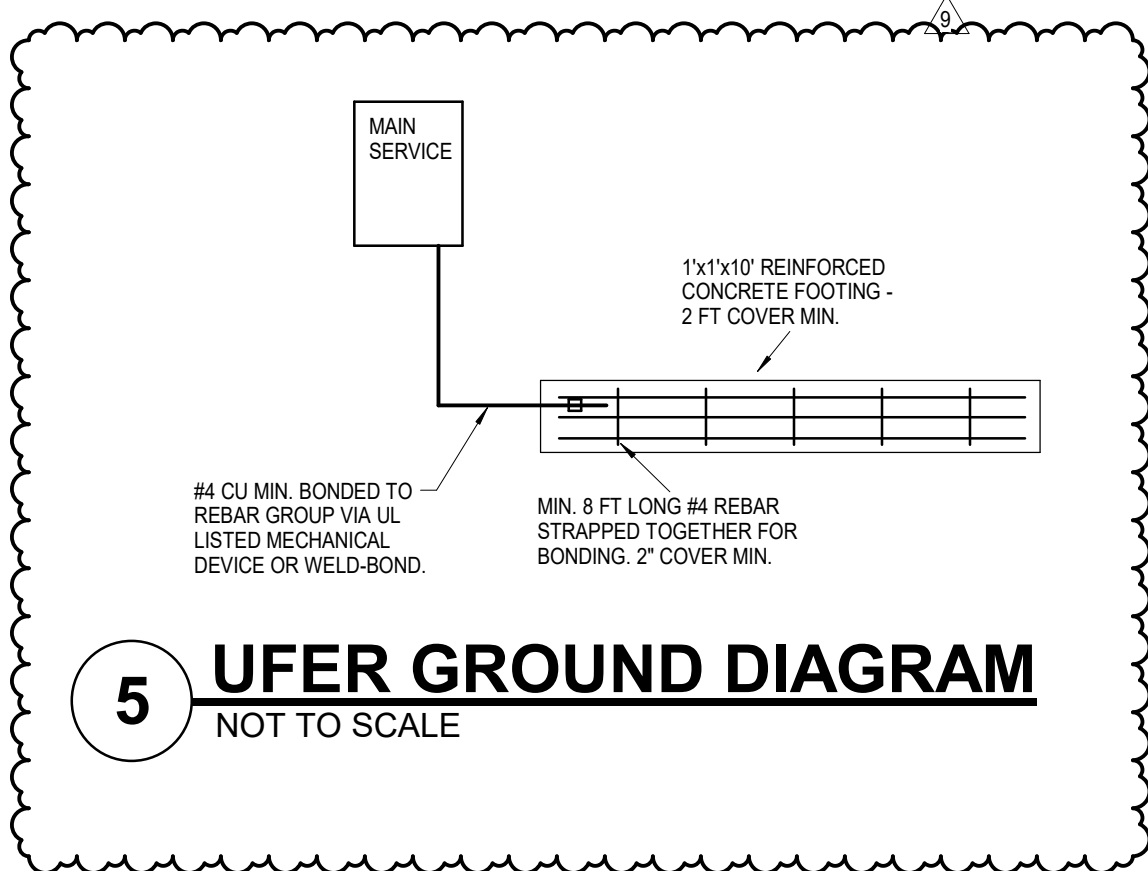


- NOTES-**
1. FINISH: HOT DIP GALVANNEE PER ASTM A153 (LATEST REVISION).
 2. BASE PLATE TO BE PERPENDICULAR TO SHAFT AXIS (±1/8"±250) AND HOLE CENTERLINE CONCENTRIC (±1/8") TO SHAFT AXIS.
 3. STENCH: MIN. 1/2 IN. LETTERS MANUFACTURER'S NUMBER AFTER GALVANIZING.
 4. PILOT POINT AND SHAFT AXES TO BE CONCENTRIC (±.125 FIM) AND IN ONE SCISSOR.
 5. FLAME CUT SLOT PERPENDICULAR TO THE BASE PLATE.
 6. PREHEAT, TUNGSTEN INERT GAS, HANGROUND, AND CLEAN BASE PLATE, HELIX AND PILOT POINT ON ALL WELDED AREAS.
 7. FLAME CUT PERPENDICULAR TO THE BASE PLATE. ALL VALVEWAYS NOT TO EXCEED 3/32 IN. BELOW NOMINAL SURFACE LEVEL. ON PEAKS OR SLOPES PERPENDICULAR TO THE SURFACE. (1) VALVEWAYS NOT TO EXCEED 1/16 IN. BELOW NOMINAL SURFACE LEVEL. ON INTERSECTIONS OF NOMINAL SURFACES.
 8. MANUFACTURER TO HAVE IN EFFECT INDUSTRY RECOGNIZED WRITTEN QUALITY CONTROL FOR ALL MATERIALS AND MANUFACTURING PROCESSES.
 9. ALL MATERIAL IS TO BE NEW, UNUSED AND MILL TRACEABLE MEETING THE FOLLOWING SPECIFICATIONS:

BASE PLATE: ASTM A36 (LATEST REVISION) HOT ROLLED STEEL PLATE. (CONFORM TO AASHTO TECH. BUL. #270)
SHAFT: STEEL PIPE PILES, SEAMLESS OR STRAIGHT WELDED, 60,000 PSI YIELD STRENGTH, 30% MIN. TENSILE, 24% MIN. REDUCED SECTION AREA.
PIPE: TYPE E OR S, GRADE-B PER ASTM A53
HELIX: ASTM A666 (LATEST REVISION) HOT ROLLED STEEL
PILOT POINT: ASTM A575 (LATEST REVISION) STEEL BAR.
BOLTS: CARR BOLT PER ANSI B-18.2.1 SAE J429 GRADE-5.
10. BASE PLATE IS PERMANENTLY STAMPED WITH MANUFACTURER'S IDENTIFICATION AND IN 1/2" LETTERS AND DATE CODE IN 1/4" LETTERS.

3 LIGHT POLE FOUNDATION DETAIL

NOT TO SCALE



5 UFER GROUND DIAGRAM

NOT TO SCALE