

DRAWINGS

COVER

ARCHITECTURAL

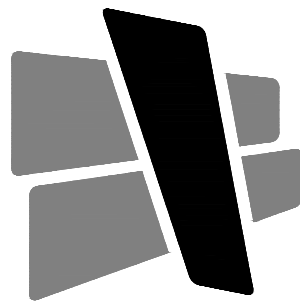
A001	INDEX
A002	TYPICAL ACCESSIBILITY DETAILS
A003	UL WALL ASSEMBLIES
A100	LIFE SAFETY PLAN
A101	FLOOR PLAN
A110	REFLECTED CEILING PLAN
A601	DOOR & FINISH SCHEDULE
A820	CASEWORK ELEVATIONS & DETAILS

MIDWEST DISTRIBUTION TI

1220 NW MAIN STREET
LEE'S SUMMIT, MO
64086

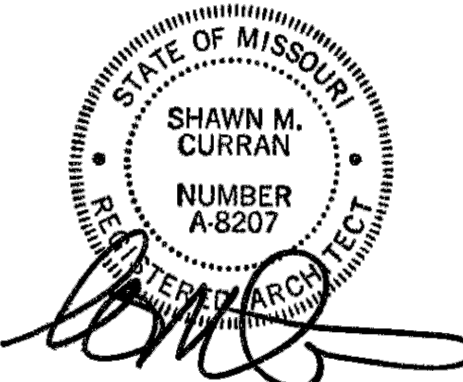
08.29.23
PERMIT SET

ARCHITECT



CURRAN
ARCHITECTURE

5719 LAWTON LOOP E. DR. #212
INDIANAPOLIS, IN 46216
O : 317 . 288 . 0681
CONTACT : SHAWN CURRAN



Midwest Distribution TI
Project # 230139

SCOPE NOTES

IN THE EVENT OF QUESTIONS REGARDING THE CONTRACT DOCUMENTS, SPECIFICATIONS, EXISTING CONDITIONS OR DESIGN INTENT, THE CONTRACTOR SHALL BE RESPONSIBLE FOR OBTAINING CLARIFICATION FROM THE ARCHITECT PRIOR TO BID SUBMITTAL AND PROCEEDING WITH ANY WORK IN QUESTION.

THESE CONTRACT DOCUMENTS ARE INTENDED TO DESCRIBE ONLY THE SCOPE AND APPEARANCE OF THE REAL PROPERTY IMPROVEMENTS, INCLUDING THE PERFORMANCE AND LEVEL OF QUALITY EXPECTED OF ITS COMPONENTS. IT IS THE CONTRACTOR'S RESPONSIBILITY TO INSURE THAT ALL WORK COMPLETED AND MATERIALS INSTALLED BE IN FULL COMPLIANCE AT A MINIMUM, WITH ALL APPLICABLE CODES, REGULATIONS, AND ORDINANCES HAVING JURISDICTIONAL AUTHORITY OVER THE PROJECT.

THESE CONTRACT DOCUMENTS DO NOT ATTEMPT TO INSTRUCT THE CONTRACTOR IN THE DETAILS OF HIS TRADE. THEY ARE PERFORMANCE SPECIFICATIONS IN THAT THEY DO REQUIRE THAT ALL MANUFACTURED ITEMS, MATERIALS AND EQUIPMENT BE INSTALLED IN STRICT CONFORMANCE TO THE MANUFACTURER'S RECOMMENDED SPECIFICATIONS, EXCEPT IN THE CASE WHERE THE CONTRACT DOCUMENTS ARE MORE STRINGENT. ANY MISCELLANEOUS ITEMS OR MATERIALS NOT SPECIFICALLY NOTED, BUT REQUIRED FOR PROPER INSTALLATION SHALL BE FURNISHED AND INSTALLED BY THE CONTRACTOR.

ALL WORK SHALL BE WARRANTED SATISFACTORY, IN MATERIALS AND WORKMANSHIP FOR A PERIOD OF ONE (1) YEAR, OR FOR THE PERIOD OF WARRANTY CUSTOMARY, OR STIPULATED FOR THE TRADE, CRAFT, OR PRODUCT, WHICHEVER IS LONGER. ONLY COMPETENT MECHANICS CAPABLE OF PRODUCING GOOD WORKMANSHIP CUSTOMARY TO THE TRADE SHOULD BE USED. COMMENCING WORK BY A CONTRACTOR OR SUBCONTRACTOR CONSTITUTES ACCEPTANCE OF THE CONDITIONS AND SURFACES CONCERNED. IF ANY SUCH CONDITIONS ARE UNACCEPTABLE, THE GENERAL CONTRACTOR SHALL BE NOTIFIED IMMEDIATELY, AND NO WORK SHALL BE PERFORMED UNTIL THE CONDITIONS ARE CORRECTED.

THE CONTRACTOR SHALL BE RESPONSIBLE FOR FAMILIARIZING HIMSELF WITH THE PROJECT SCOPE OF WORK, BUILDING STANDARDS, SCHEDULE AND DEADLINES. THE CONTRACTOR SHALL FURTHER BE RESPONSIBLE FOR ADVISING THE OWNER OF ALL LONG LEAD ITEMS AFFECTING THE PROJECT SCHEDULE AND SHALL, UPON REQUEST FROM THE OWNER, SUBMIT ORDER CONFIRMATIONS AND DELIVERY DATES FOR SUCH LONG LEAD ITEMS TO THE OWNER.

ALL CONTRACTOR OR SUPPLIER REQUESTS FOR SUBSTITUTIONS OF SPECIFIED ITEMS SHALL BE SUBMITTED, IN WRITING, ACCOMPANIED BY THE ALTERNATIVE PRODUCT INFORMATION, TO THE ARCHITECT, NO LATER THAN TEN (10) BUSINESS DAYS, PRIOR TO BID OPENING DATE. SUBSTITUTIONS SHALL ONLY BE CONSIDERED IF THEY DO NOT SACRIFICE QUALITY, FUNCTIONALITY, APPEARANCE OR WARRANTY. UNDER NO CIRCUMSTANCES WILL THE OWNER BE REQUIRED TO PROVE THAT A PRODUCT PROPOSED FOR SUBSTITUTION IS OR IS NOT OF EQUAL QUALITY TO THE PRODUCT SPECIFIED. UNDER NO CIRCUMSTANCES SHALL THE CONTRACTOR SCALE THE DRAWINGS TO DETERMINE DIMENSIONS. REFER TO PLANS, SECTIONS AND DETAILS FOR ALL DIMENSIONAL INFORMATION.

THE CONTRACTOR SHALL BE RESPONSIBLE FOR THE INSTALLATION OF ALL SELECTED MATERIALS WHICH SHALL BE COMPLETE IN ALL RESPECTS PRIOR TO THE FINAL ACCEPTANCE, UNLESS OTHERWISE NOTED.

THE CONTRACTOR SHALL PRESERVE ALL PRINTED INSTRUCTIONS AND WARRANTY INFORMATION THAT IS PROVIDED WITH EQUIPMENT OR MATERIALS USED, AND DELIVER SAID PRINTED MATTER TO THE OWNER AT THE TIME OF SUBSTANTIAL COMPLETION. THE CONTRACTOR SHALL INSTRUCT THE OWNER IN THE PROPER USE OF THE EQUIPMENT FURNISHED BY THEIR TRADE.

GENERAL CONTRACTOR SHALL PROVIDE A THOROUGH CONSTRUCTION CLEANING AT PROJECT CLOSE OUT, PRIOR TO PUNCH LIST WALK THROUGH.

THE CONTRACTOR SHALL SUBMIT SHOP DRAWINGS OF ALL FABRICATED ITEMS, AND PHYSICAL SAMPLES OF ALL FINISH MATERIALS SPECIFIED TO THE ARCHITECT FOR REVIEW.

REVIEWED SHOP DRAWINGS AND SUBMITTALS BY OTHERS SHALL NOT BE CONSIDERED AS PART OF THE CONTRACT DOCUMENTS. THE ARCHITECT ASSUMES NO RESPONSIBILITY FOR DRAWINGS, SCHEDULES, AND/OR SPECIFICATIONS FOR WORK ON THE PROJECT PREPARED BY OTHERS.

THE ARCHITECT WILL REVIEW ALL SHOP DRAWINGS, SUBMITTALS AND SAMPLES FOR CONFORMITY WITH THE PROJECT DOCUMENTS AND RETURN THEM TO THE CONTRACTOR WITHIN SEVEN (7) WORKING DAYS EXCEPT AS MAY OTHERWISE BE PROVIDED FOR BY THE OWNER.

THE CONTRACTOR SHALL NOT REPRODUCE AND MARK UP ANY PART OF THE CONTRACT DOCUMENTS FOR SUBMITTAL AS A SHOP DRAWING. ANY SUCH SUBMITTAL WILL BE REJECTED.

ANY SUBMITTAL REQUIRED TO BE REVIEWED MORE THAN THE INITIAL REVIEW AND ONE (1) ADDITIONAL REVIEW, WILL BE CONSIDERED TO BE IN EXCESS OF THE SCOPE OF THE PROJECT. THE TIME REQUIRED FOR THIRD AND SUBSEQUENT REVIEWS OF A SUBMITTAL WILL BE PAID FOR BY THE CONTRACTOR TO THE ARCHITECT AT THE ARCHITECT'S STANDARD BILLING RATES, PLUS REIMBURSABLE EXPENSES.

THE CONTRACTOR SHALL BE RESPONSIBLE FOR VERIFICATION OF ANY EXISTING CONDITIONS AND ALL CRITICAL DIMENSIONS ASSOCIATED WITH THE PROPOSED WORK. THE CONTRACTOR SHALL CONFIRM THAT ALL WORK OUTLINED WITHIN THE CONTRACT DOCUMENTS CAN BE ACCOMPLISHED AS SHOWN, PRIOR TO BID OPENING. THE CONTRACTOR SHALL NOTIFY THE ARCHITECT OF ANY CONDITIONS ENCOUNTERED WHICH MAY AFFECT BUILDING CODE COMPLIANCE, LIFE SAFETY, ISSUANCE OF CERTIFICATE OF OCCUPANCY, OR COMPLETION OF THE PROJECT AS DIRECTED IN THE CONTRACT DOCUMENTS.

NO ADDITIONAL FUNDS WILL BE APPROVED FOR WORK OMITTED FROM THE CONTRACTOR'S BID DUE TO LACK OF VERIFICATION BY THE CONTRACTOR, EXCEPT AS OTHERWISE APPROVED BY THE OWNER FOR WORK ASSOCIATED WITH HIDDEN CONDITIONS WHICH ARE NOT ACCESSIBLE PRIOR TO CONSTRUCTION.

REFER TO PROJECT MANUAL (WHEN APPLICABLE) FOR ADDITIONAL REQUIREMENTS AND DIRECTIONS. ALL INTERIOR FINISHES SHALL COMPLY WITH CHAPTER EIGHT (8) OF THE 2018 INTERNATIONAL BUILDING CODE.

LIGHT GAGE METAL STUDS, STUDS, THEIR COMPONENTS AND THEIR CONNECTIONS SHALL BE ENGINEERED BY A PROFESSIONAL ENGINEER LICENSED IN THE STATE WHERE THE PROJECT IS LOCATED. THE ENGINEER SHALL AFFIX THEIR SEAL AND SIGNATURE TO SHOP DRAWINGS AND CALCULATIONS SUBMITTED FOR REVIEW.

STEEL REQUIRED TO TRANSMIT GRAVITY AND/OR LATERAL LOADS TO THE STRUCTURE NOT DETAILED ON THE STRUCTURAL DRAWINGS IS THE RESPONSIBILITY OF THE METAL STUD SUPPLIER TO DESIGN, DETAIL, PROVIDE AND INSTALL.

METAL STUDS SHALL BE DESIGNED TO SUPPORT THE LOADS SHOWN IN THE DESIGN DATA IN ADDITION TO THE WEIGHT OF THE MATERIALS ATTACHED TO THE METAL STUDS. METAL STUDS SHALL BE DESIGNED USING THE LOAD COMBINATIONS IN SECTION 1605.3.1 OF THE INTERNATIONAL BUILDING CODE, 2012 EDITION. NO INCREASE IN ALLOWABLE STRESS IS ALLOWED.

DEFLECTION DUE TO LATERAL LOAD SHALL BE LIMITED TO $\frac{1}{160}$ OF THE STUD SPAN, FOR CANTILEVERS, THE DEFLECTION DUE TO LATERAL LOAD AT THE END OF THE CANTILEVER SHALL BE LIMITED TO $\frac{1}{160}$ OF THE CANTILEVER DIMENSION.

METAL STUD MANUFACTURER SHALL DETERMINE FINAL LAYOUT AND GAUGE OF STUDS TO MEET THE ARCHITECTURAL AND STRUCTURAL REQUIREMENTS.

WHERE ROUGH CARPENTRY IS IN CONTACT WITH THE GROUND, EXPOSED TO WEATHER OR IN AREAS OF HIGH RELATIVE HUMIDITY PROVIDE FASTENERS AND ANCHORAGES WITH A HOT DIP ZINC COATING OF G90 COMPLYING WITH ASTM A153 OR PROVIDE FASTENERS AND ANCHORAGES OF TYPE 304 STAINLESS STEEL.

ALL WOOD SHEATHING TO BE FIRE TREATED UNLESS NOTED OTHERWISE.

ACT	ACOUSTICAL CEILING TILE
ADDL	ADDITIONAL
AFF	ABOVE FINISHED FLOOR
ALUM	ALUMINUM
ANOD	ANODIZED
APP	APPROXIMATE
ARCH	ARCHITECT
AWT	ACOUSTICAL WALL TREATMENT
BLDG	BUILDING
BLKG	BLOCKING
B.O.	BOTTOM OF
BOT	BOTTOM
BRG	BEARING
CAB	CABINET
CJ	CONTROL JOINT
CL	CENTER LINE
CLR	CLEAR
CMU	CONCRETE MASONRY UNIT
CONST	CONSTRUCTION
COL	COLUMN
CONC	CONCRETE
CONT	CONTINUOUS
CPT	CARPET
CT	CERAMIC TILE
CW	COLD WATER
DET, DTL	DETAIL
DF	DRINKING FOUNTAIN
DIA	DIAMETER
DIM	DIMENSION
DWG(S)	DRAWING(S)
EA	EACH
EC	EXPOSED CEILING
EIFS	EXTERIOR INSULATION FINISH SYSTEM
EJ	EXPANSION JOINT
EL	ELEVATION
ENG	ENGINEER
EQ	EQUAL
EQUIP	EQUIPMENT
EXIST	EXISTING
EXP	EXPANSION
EXT	EXTERIOR
FD	FLOOR DRAIN
FE	FIRE EXTINGUISHER
FEC	FIRE EXTINGUISHER CABINET
FIN	FINISH

ABBREVIATIONS

FLR	FLOOR
FR	FIRE RETARDANT
FT	FEET
GA	GAUGE
GB	GRAB BAR
GC	GENERAL CONTRACTOR
GYP BD	GYPSUM BOARD
HDWR	HARDWARE
HGT	HEIGHT
HM	HOLLOW METAL
HORIZ	HORIZONTAL
HP	HIGH POINT
HVAC	HEATING, VENTILATING, AIR CONDITIONING
HW	HOT WATER
INSUL	INSULATION
JAN	JANITOR
JST	JOIST
JT	JOINT
KD	KNOCKDOWN
KIT	KITCHEN
LAM	LAMINATE
LAV	LAVATORY
LLH	LONG LEG HORIZONTAL
LLV	LONG LEG VERTICAL
MAS	MASONRY
MAT	MATERIAL
MAX	MAXIMUM
MB	MARKER BOARD
MECH	MECHANICAL
MEZZ	MEZZANINE
MFR	MANUFACTURER
MIN	MINIMUM
MO	MASONRY OPENING
MTL	METAL
NIC	NOT IN CONTRACT
NR	NOT RATED
OC	ON CENTER
OD	OUTSIDE DIAMETER
OFD	OVERFLOW DRAIN
OH	OPPOSITE HAND
OPNG	OPENING
OPP	OPPOSITE
OTO	OUT TO OUT
PLAS LAM	PLASTIC LAMINATE
PLWD	PLYWOOD

PS	PROJECTION SCREEN
QT	QUARRY TILE
R	RISER
RA	RETURN AIR
RB	RESILIENT BASE
RD	ROOF DRAIN
REF	REFERENCE
REFR	REFRIGERATOR
REQD	REQUIRED
RO	ROUGH OPENING
SA	SUPPLY AIR
SCHED	SCHEDULE
SCMD	SOLID CORE METAL DOOR
SCVD	SOLID CORE WOOD DOOR
SEC	SECTION
SF	SQUARE FOOT
SM	SIMILAR
SPECS	SPECIFICATIONS
SQ	SQUARE
SS	STAINLESS STEEL
STD	STANDARD
STL	STEEL
STOR	STORAGE
STRUCT	STRUCTURAL
SUSP	SUSPENDED
TB	TACK BOARD
TEL	TELEPHONE
TLT	TOILET
T.O.	TOP OF
TRTD	TREATED
TV	TELEVISION
TYP	TYPICAL
UNO	UNLESS NOTED OTHERWISE
UR	URNAL
YCT	VINYL COMPOSITION TILE
VERT	VERTICAL
VIF	VERIFY IN FIELD
VT	VINYL TILE
W/	WITH
W/O	WITHOUT
WB	WOOD BASE
WC	WATER CLOSET
WD	WOOD
WH	WATER HEATER
WP	WORKING POINT

SYMBOLS

(NOT ALL MAY APPLY)

	KEYED NOTE
	WINDOW OR GLAZED OPENING TAG IF WINDOW - WH IF STOREFRONT - SFH IF CURTAINWALL - CW#
	ACCESSORY TAG
	EQUIPMENT TAG
	FINISH TAG
	ROOM TAG
	ELEVATION TAG - INTERIOR OR EXTERIOR
	SECTION CUT AT AREAS SHOWN SMALL SCALE
	ENLARGED PLAN
	ELEVATION TARGET. FINISHED FLOOR = 0'-0" UNO
	REVISION
	PLAN OR TRUE NORTH
	BATT INSULATION - WIDTH OF FRAMING UNO
	FIRE EXTINGUISHER IN SEMI-RECESSED CABINET PROVIDED / INSTALLED BY GC
	SURFACE MOUNTED FIRE EXTINGUISHER PROVIDED / INSTALLED BY GC
	DOOR WITH DOOR NUMBER
	WINDOW OR GLAZED OPENING
	STUD FRAMED WALL - REFER TO INDEX SHEET FOR INFORMATION
	CMU WALL - REFER TO SECTIONS AND DETAILS
	BRICK WALL - REFER TO SECTIONS AND DETAILS
	CONCRETE WALL - REFER TO SECTIONS AND DETAILS
	EIFS OVER SUBSTRATE - REFER TO SECTIONS FOR WIDTH AND PROFILE
	EXISTING DOOR - REFER TO DOOR SCHEDULE
	EXISTING FRAMED WALL
	EXISTING WINDOW WITH SILL AND / OR STOOL
	DEMO'D DOOR
	DEMO'D WALL
	WALL TYPE
	WALL HEIGHT IF DESIGNATED ON PLANS. IF NOT, SEE WALL TYPES THIS SHEET

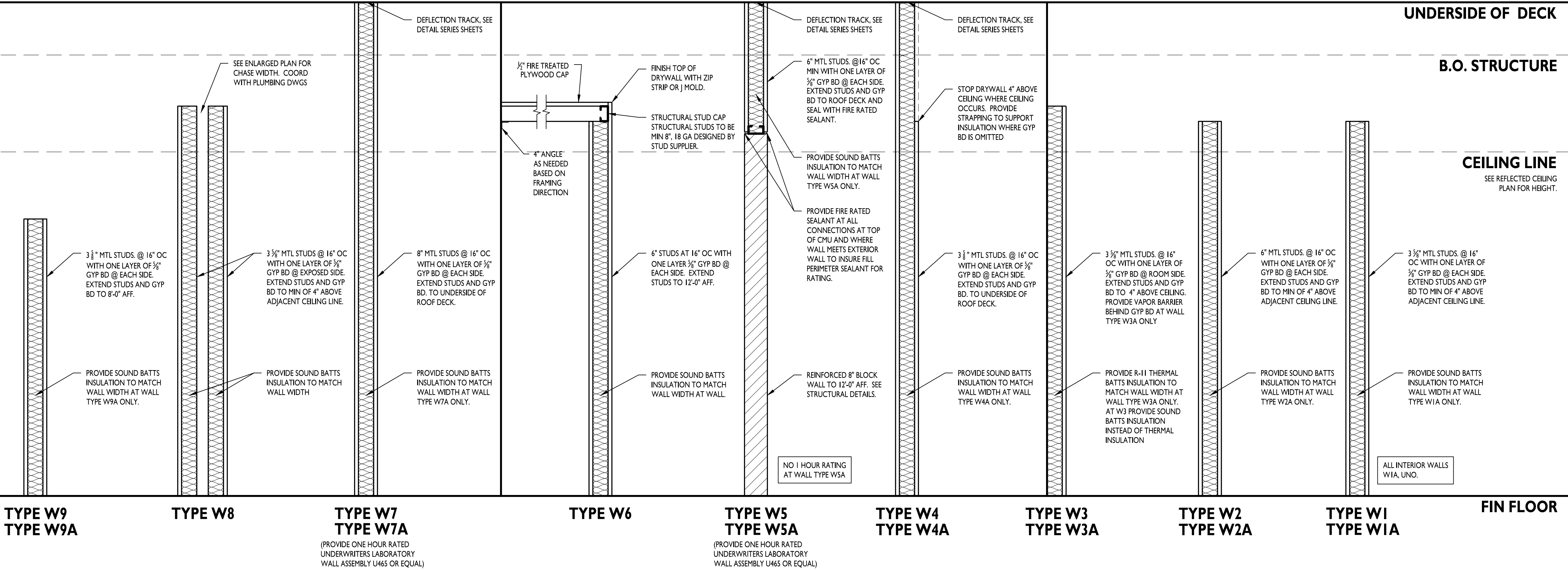
UNDERSIDE OF DECK

B.O. STRUCTURE

CEILING LINE

SEE REFLECTED CEILING PLAN FOR HEIGHT.

FIN FLOOR



5719 LAWTON LOOP E. DR. #212
INDIANAPOLIS, IN 46216
O :: 317.288.0681
F :: 317.288.0753

TOILET PAPER: TOILET PAPER DISPENSERS SHALL BE INSTALLED WITHIN 36" MAX OF THE BACK WALL.



PROJECT INFORMATION

MIDWEST DISTRIBUTION TI

ISSUE DATES

PERMIT SET 08.29.23

230139

A002

ONLINE CERTIFICATIONS DIRECTORY

[Home](#) [Quick Guide](#) [Contact Us](#) [UL.com](#)

Design No. U465

BXUV-U465

Fire Resistance Ratings - ANSI/UL 263

[Page Bottom](#)

Design/System/Construction/Assembly Usage Disclaimer

- Authorities Having Jurisdiction should be consulted in all cases as to the particular requirements covering the installation and use of UL Certified products, equipment, systems, devices, and materials.
- Authorities Having Jurisdiction should be consulted before construction.
- Fire resistance assemblies and products are developed by the design subcommittee and have been investigated by UL for compliance with applicable requirements. The published information cannot always address every construction nuance encountered in the field.
- When field issues arise, it is recommended the first contact for assistance be the technical service staff provided by the product manufacturer noted for the design. Users of fire resistance assemblies are advised to consult the general Guide Information for each product category and each group of assemblies. The Guide Information includes specific guidance concerning alternate materials and alternate methods of construction.
- Only products which bear UL's Mark are considered Certified.

Fire-resistance Ratings - ANSI/UL 263

[See General Information for Fire-resistance Ratings - ANSI/UL 263](#)

Design No. U465

June 07, 2013

Nonbearing Wall Rating – 1 HR.

1. Floor and Ceiling Runners – (Not shown) – Channel shaped runners, 3-5/8 in. deep (min), 1-1/4 in. legs, formed from min 25 MSG galv steel, attached to floor and ceiling with fasteners spaced 24 in. OC max.

1A. Framing Members* – Floor and Ceiling Runners – (Not shown) – As an alternate to Item 1 - Channel shaped, min 3-5/8 in. deep, attached to floor and ceiling with fasteners spaced 24 in. OC max.

ALLSTEEL & GYPSUM PRODUCTS INC – Type SUPREME Framing System

CONSOLIDATED FABRICATORS CORP, BUILDING PRODUCTS DIV – Type SUPREME Framing System

QUAIL RUN BUILDING MATERIALS INC – Type SUPREME Framing System

http://database.ul.com/.../ANSUL-U-263&objid=107430743&cfdid=1077341824&version=versionless&parent_id=107398481&sequence=[18]/2013 8:57:01 AM]

THAT GYPSUM PRODUCTS PCL – Type X, Type C.

UNITED STATES GYPSUM CO – Type AR, C, FRX-G, IP-AR, IP-X1, IP-X2, IPC-AR, SCX, SHX, WRC, WRX, USGX (Joint tape and compound, Item 5, optional for use with Type USGX).

USG MEXICO S A DE C V – Type AR, C, IP-AR, IP-X1, IP-X2, IPC-AR, SCX, SHX, WRC or WRX.

4A. Gypsum Board* – (As alternate to Item 4) - Nom 5/8 in. thick gypsum panels with beveled, square or tapered edges, applied vertically or horizontally. Vertical joints centered over studs and staggered one stud cavity on opposite sides of studs. Horizontal edge joints and horizontal butt joints on opposite sides of studs need not be staggered or backed by steel framing. Panels attached to steel studs and floor runner with 1 in. long Type S steel screws spaced 8 in. OC when applied horizontally, or 8 in. OC along vertical and bottom edges and 12 in. OC in the field when panels are applied vertically. When used in widths other than 48 in., gypsum panels to be installed horizontally.

CGC INC – Types AR, C, IP-AR, IP-X1, IP-X2, IPC-AR, SCX, SHX, WRC or WRX.

CERTAINTED GYPSUM INC – Type X, Type C, Type EGRG/ GlasRoc.

CERTAINTED GYPSUM CANADA INC – Type X, Type C, Type EGRG/ GlasRoc.

GAFORE-PACIFIC GYPSUM L L C – Types DAP, DAPC, DGG, DS.

LAFARGE NORTH AMERICA INC – Type LGFC6A, LGFC-7A

THAT GYPSUM PRODUCTS PCL – Type X, Type C.

UNITED STATES GYPSUM CO – Type AR, C, FRX-G, IP-AR, IP-X1, IP-X2, IPC-AR, SCX, SHX, WRC, WRX, USGX (Joint tape and compound, Item 5, optional for use with Type USGX).

USG MEXICO S A DE C V – Type AR, C, IP-AR, IP-X1, IP-X2, IPC-AR, SCX, SHX, WRC or WRX.

4B. Gypsum Board* – (As an alternate to Items 4 or 4A) – Nom 3/4 in. thick, 4 ft wide, installed as described in Item 4A, with screw length not less than 1 1/4 in.

CGC INC – Types AR, IP-AR.

UNITED STATES GYPSUM CO – Types AR, IP-AR.

USG MEXICO S A DE C V – Types AR, IP-AR.

4C. Gypsum Board* – As an alternate to Items 4A, and 4B - Nom 5/8 in. thick gypsum panels, with square edges, applied horizontally. Gypsum panels fastened to framing with 1 in. long bugle head steel screws spaced a max 8 in. OC, with last 2 screws 3/4 in. and 4 in. from each edge of board. Horizontal joints need not be backed by steel framing. Horizontal edge joints and horizontal butt joints on opposite side of studs or temple inlaid need not be staggered or backed by steel framing.

TEMPLE INLAIN – GreenGlass Type X.

http://database.ul.com/.../ANSUL-U-263&objid=107430743&cfdid=1077341824&version=versionless&parent_id=107398481&sequence=[18]/2013 8:57:01 AM]

SCAFCO STEEL STUD MANUFACTURING CO – Type SUPREME Framing System

STEEL CONSTRUCTION SYSTEMS INC – Type SUPREME Framing System

UNITED METAL PRODUCTS INC – Type SUPREME Framing System

1B. Framing Members* – Floor and Ceiling Runners – (Not shown - In lieu of Item 1 – For use with Item 2B, proprietary channel shaped runners, 1-1/4 in. wide by min 3-5/8 in. deep fabricated from min 0.020 in. thick galv steel, attached to floor and ceiling with fasteners spaced 24 in. OC max.

CALIFORNIA EXPANDED METAL PRODUCTS CO – Viper20™ Track

CRACO MFG INC – SmarterTrack20™, SmartTrack20™

MARINO/WARE, DIV OF WARE INDUSTRIES INC – Viper20™ Track

PHILLIPS MFG CO L L C – Viper20™ Track

1C. Floor and Ceiling Runners – (Not shown) – For use with Item 2C- Channel shaped, fabricated from min 20 MSG corrosion protected or galv steel, min depth to accommodate stud size, with min 1 in. long legs, attached to floor and ceiling with fasteners spaced max 24 in. OC

1D. Framing Members* – Floor and Ceiling Runners – (Not shown - In lieu of Items 1 through 1C – For use with Item 2D and 4G only, proprietary channel shaped runners, 1-1/4 in. deep by min 3-5/8 in. wide fabricated from min 0.018 in. thick galv steel, attached to floor and ceiling with fasteners spaced 24 in. OC max.

CLARKDIETRICH BUILDING SYSTEMS – CD ProTRAK

DMFCWS L L C – ProTRAK

MBA BUILDING SUPPLIES – ProTRAK

RAM SALES L L C – Ram ProTRAK

SOUTHEASTERN STUD & COMPONENTS INC – ProTRAK

STEEL STRUCTURAL SYSTEMS L L C – Tri-S ProTRAK

1E. Framing Members* – Floor and Ceiling Runners – (Not shown - In lieu of Items 1 through 1D – For use with Item 2E and 4I only, proprietary channel shaped runners, 1-1/4 in. deep by min 3-5/8 in. wide fabricated from min 0.018 in. thick galv steel, attached to floor and ceiling with fasteners spaced 24 in. OC max.

TELLING INDUSTRIES L L C – TRUE-TRAK™

1F. Framing Members* – Floor and Ceiling Runners – (Not shown - In lieu of Items 1 through 1E – For use with Item 2, channel shaped runners, 1-1/4 in. deep by min 3-5/8 in. wide fabricated from min 25 MSG steel, attached to floor and ceiling with fasteners spaced 24 in. OC max.

KIRRI (HONG KONG) LTD – Type KIRRI

http://database.ul.com/.../ANSUL-U-263&objid=107430743&cfdid=1077341824&version=versionless&parent_id=107398481&sequence=[18]/2013 8:57:01 AM]

<div><div><div><div><div><div>4D. Gypsum Board* – As an alternate to Items 4, 4A, 4B, and 4C - Nom 5/8 in. thick gypsum panels applied horizontally. Horizontal joints need not be backed by steel framing. Horizontal edge joints and horizontal butt joints on opposite sides of studs need not be staggered. Gypsum panels fastened to framing with 1 in. long Type S steel screws 1-1/2 in. from board edges, 3 in. from board edge and every 8 in. OC in the field. Screws spaced a max 12 in. along the top and bottom edges of the wall.</div><div>NATIONAL GYPSUM CO – Types FSK-C, FSK-G, FSW-C, FSW-G, FSW-F.</div></div></div><div><div><div><div>4E. Gypsum Board* – (As an alternate to Items 4 through 4D) - Installed as described in Item 4, 5/8 in. thick, 4 ft wide, paper surfaced, applied vertically only and fastened to the studs and plates with 1 in. long, Type S steel screws spaced 8 in. OC. Not to be used with Item 6.</div><div>NATIONAL GYPSUM CO – SoundBreak XP Type X Gypsum Board</div></div></div><div><div><div><div>4F. Gypsum Board* – (Not Shown) - (As an alternate to Item 4 when used as the base layer on one or both sides of wall. For direct attachment only to steel studs Item 2C) - Nom 5/8 in. thick lead backed gypsum panels with beveled, square or tapered edges, applied vertically. Vertical joints centered over studs and staggered min 1 stud cavity on opposite sides of studs. Gypsum board secured to studs with 1-1/4 in. long Type S-12 steel screws spaced 8 in. OC at perimeter and 12 in. OC in the field. Lead batten strips required behind vertical joints of lead backed gypsum wallboard and optional at remaining stud locations. Lead batten strips, min 2 in. wide, max 8 ft long with a max thickness of 5/16 in., placed on the face of studs and attached to the stud with construction adhesive and two 1 in. long Type S-12 pan head steel screws, one at the top of the strip and one at the bottom of the strip. Lead discs, nominal 3/8 in. diam by max 0.085 in. thick. Compression fitted or adhered over the screw heads. Lead batten strips and discs to have a purity of 99.9% meeting the Federal specification QQ-L-2011, Grade "C".</div><div>RADIATION PROTECTION PRODUCTS INC – Type RPP - Lead Lined Drywall</div></div></div><div><div><div><div>4H. Gypsum Board* – (For use with Item 8) - 5/8 in. thick, 4 ft wide, applied vertically over Mineral and Fiber Board (Item 8) with vertical joints located anywhere over stud cavities. Secured to mineral and fiber boards with 1-1/2 in. Type C Screws spaced 8 in. OC along edges of each vertical joint and 12 in. OC in intermediate field of the Mineral and Fiber Board (Item 8). Secured to outermost studs and floor and ceiling runners with 2 in. long Type S screws spaced 8 in. OC. Gypsum Board joints covered with paper tape and joint compound. Screw heads covered with joint compound.</div><div>AMERICAN GYPSUM CO – Type AG-C</div></div></div><div><div><div><div>4I. Gypsum Board* – (As an alternate to Items 4 through 4F) – For use with Items 1D and 2D only, 5/8 in. thick, 4 ft wide, attached to steel studs and floor and ceiling track with 1 in. long, Type S steel screws spaced 8 in. OC, along edges of board and 12 in. OC in the field of the board. Joints oriented vertically and staggered on opposite sides of the assembly.</div><div>LAFARGE NORTH AMERICA INC – Type LGFC6A, LGFC-C/A</div></div></div><div><div><div><div>NATIONAL GYPSUM CO – Types FSW</div></div></div></div></div></div></div></div></div></div></div>	
<div><div><div><div><div>UNITED STATES GYPSUM CO – Type SCX</div></div></div><div><div><div><div>4H. Wall and Partition Facings and Accessories* – (As an alternate to Items 4 through 4G) – Nominal 5/8 in. thick, 4 ft wide panels, applied vertically and secured as described in Item 4.</div><div>SERIOUS ENERGY INC – Types QuietRock ES, QuietRock S27.</div></div></div><div><div><div><div>4I. Gypsum Board* – (As an alternate to Items 4 through 4F) – For use with Items 1E and 2E only, 5/8 in. thick, 4 ft wide, attached to steel studs and floor and ceiling track with 1 in. long, Type S steel screws spaced 8 in. OC, along edges of board and 12 in. OC in the field of the board. Joints oriented vertically and staggered on opposite sides of the assembly.</div><div>UNITED STATES GYPSUM CO – Type SCX</div></div></div><div><div><div><div>4J. Gypsum Board* – (Not Shown) - (As an alternate to Item 4 when used as the base layer on one or both sides of wall. For direct attachment only to steel studs Item 2C) - Nom 5/8 in. thick lead backed gypsum panels with beveled, square or tapered edges, applied vertically. Vertical joints centered over studs and staggered min 1 stud cavity on opposite sides of studs. Gypsum board secured to studs with 1-1/4 in. long Type S-12 steel screws spaced 8 in. OC at perimeter and 12 in. OC in the field. To be used with Lead Batten Strips (see Item 9A) or Lead Discs (see Item 10A).</div><div>MAYCO INDUSTRIES INC – Type X-Ray Shielded Gypsum</div></div></div><div><div><div><div>4K. Gypsum Board* – (As an alternate to Item 4 and 4A, not for use with Items 1D, 1E, 2D and 2E) - Nom. 5/8 in. thick gypsum panes with beveled, square or tapered edges installed as described in Item 4 and 4A.</div><div>CGC INC – Type ULX</div></div></div></div></div></div></div></div></div>	

http://database.ul.com/.../ANSUL-U-263&objid=107430743&cfdid=1077341824&version=versionless&parent_id=107398481&sequence=[18]/2013 8:57:01 AM]

1G. **Framing Members* – Floor and Ceiling Runners** – (Not shown - In lieu of Items 1 through 1F – For use with Item 2, channel shaped runners, 1-1/4 in. deep by min 3-5/8 in. wide, attached to floor and ceiling with fasteners spaced 24 in. OC max.

STUCCO BUILDING SYSTEMS – CROCESTUD Track

1H. **Floor and Ceiling Runners** – (Not shown) – Channel shaped, fabricated from min 0.02 in. galv steel, min width to accommodate stud size, with min 1 in. long legs, for use with studs specified below and fabricated from min 0.02 in. galv steel or thicker, attached to floor and ceiling with fasteners spaced max 24 in. OC.

MARINO/WARE, DIV OF WARE INDUSTRIES INC – Viper20™ Track V110.

1I. **Framing Members* - Floor and Ceiling Runners** – (Not shown - In lieu of Item 1 – For use with Item 2I, proprietary channel shaped runners, 1-1/4 in. wide by min 3-5/8 in. deep fabricated from min 0.020 in. thick galv steel, attached to floor and ceiling with fasteners spaced 24 in. OC max.

TELLING INDUSTRIES L L C – Viper20™ Track

2. **Steel Studs** – Channel shaped, 3-5/8 in. deep (min), formed from min No. 25 MSG galv steel spaced 24 in. OC max. Studs to be cut 3/4 in. less than assembly height.

2A. **Framing Members* – Steel Studs** – As an alternate to Item 2 - Channel shaped studs, min 3-5/8 in. deep, spaced a max of 24 in. OC. Studs to be cut 3/4 in. less than assembly height.

ALLSTEEL & GYPSUM PRODUCTS INC – Type SUPREME Framing System

CONSOLIDATED FABRICATORS CORP, BUILDING PRODUCTS DIV – Type SUPREME Framing System

QUAIL RUN BUILDING MATERIALS INC – Type SUPREME Framing System

SCAFFO STEEL STUD MANUFACTURING CO – Type SUPREME Framing System

STEEL CONSTRUCTION SYSTEMS INC – Type SUPREME Framing System

UNITED METAL PRODUCTS INC – Type SUPREME Framing System

2B. **Framing Members* – Steel Stud** – (Not shown - In lieu of Item 2 – For use with Item 1B, proprietary channel shaped steel studs, 1-1/4 in. wide by min 3-5/8 in. deep fabricated from min 0.020 in. thick galv steel. Studs cut 3/4 in. less in length than assembly height.

CALIFORNIA EXPANDED METAL PRODUCTS CO – Viper20™

CRACO MFG INC – SmarterStud20™, SmartStud20™

MARINO/WARE, DIV OF WARE INDUSTRIES INC – Viper20™

PHILLIPS MFG CO L L C – Viper20™

2C. **Steel Studs** – (As an alternate to Item 2, for use with Item 4E) Channel shaped, fabricated from min 20 MSG corrosion-protected or galv steel, 3-1/2 in. min depth, spaced a max of 16 in. OC. Studs friction-fit into

http://database.ul.com/.../ANSUL-U-263&objid=107430743&cfdid=1077341824&version=versionless&parent_id=107398481&sequence=[18]/2013 8:57:01 AM]

<div><div><div><div><div>UNITED STATES GYPSUM CO – Type ULX</div></div></div><div><div><div><div>USG MEXICO S A DE CV – Type ULX</div></div></div></div></div></div>	
<div><div><div><div><div>4I. Gypsum Board* – (Not Shown) - (As an alternate to Item 4 when used as the base layer on one or both sides of wall. For direct attachment only to steel studs Item 2C) - Nom 5/8 in. thick lead backed gypsum panels with beveled, square or tapered edges, applied vertically. Vertical joints centered over studs and staggered min 1 stud cavity on opposite sides of studs. Wallboard secured to studs with 1-1/4 in. long Type S-12 steel screws gypsum panel steel screws spaced 8 in. OC at perimeter and 12 in. OC in the field. Lead batten strips required behind vertical joints of lead backed gypsum wallboard and optional at remaining stud locations. Lead batten strips, min 2 in. wide, max 8 ft long with a max thickness of 5/16 in., placed on the face of studs and attached to the stud with construction adhesive and two 1 in. long Type S-12 pan head steel screws, one at the top of the strip and one at the bottom of the strip. Lead discs, nominal 3/8 in. diam by max 0.085 in. thick. Compression fitted or adhered over the screw heads. Lead batten strips and discs to have a purity of 99.9% meeting the Federal specification QQ-L-2011, Grade "C".</div><div>RADIATION PROTECTION PRODUCTS INC – Type RPP - Lead Lined Drywall</div></div></div><div><div><div><div>4H. Gypsum Board* – (For use with Item 8) - 5/8 in. thick, 4 ft wide, applied vertically over Mineral and Fiber Board (Item 8) with vertical joints located anywhere over stud cavities. Secured to mineral and fiber boards with 1-1/2 in. Type C Screws spaced 8 in. OC along edges of each vertical joint and 12 in. OC in intermediate field of the Mineral and Fiber Board (Item 8). Secured to outermost studs and floor and ceiling runners with 2 in. long Type S screws spaced 8 in. OC. Gypsum Board joints covered with paper tape and joint compound. Screw heads covered with joint compound.</div><div>AMERICAN GYPSUM CO – Type AG-C</div></div></div><div><div><div><div>CERTAINTED GYPSUM INC – Type FRPC, Type C</div></div></div></div></div></div></div>	
<div><div><div><div><div>CERTAINTED GYPSUM CANADA INC – Type C</div></div></div></div></div>	

http://database.ul.com/.../ANSUL-U-263&objid=107430743&cfdid=1077341824&version=versionless&parent_id=107398481&sequence=[18]/2013 8:57:01 AM]

floor and ceiling runners. Studs to be cut 5/8 to 3/4 in., less than assembly height.

2D. **Framing Members* – Steel Studs** – As an alternate to Items 2 through 2C- For use with Item 1D and 4E only, channel shaped studs, min 3-5/8 in. wide fabricated from min 0.018 in. thick galv steel, spaced a max of 24 in. OC. Studs to be cut 1/2 in. less than assembly height.

CLARKDIETRICH BUILDING SYSTEMS – CD ProSTUD

DMFCWS L L C – ProSTUD

MBA BUILDING SUPPLIES – ProSTUD

RAM SALES L L C – Ram ProSTUD

SOUTHEASTERN STEEL & COMPONENTS INC. – ProSTUD

STEEL STRUCTURAL SYSTEMS L L C – Tri-5 ProSTUD

2E. **Framing Members* – Steel Studs** – As an alternate to Items 2 through 2D- For use with Item 1E and 4E only, channel shaped studs, min 3-5/8 in. wide fabricated from min 0.018 in. thick galv steel, spaced a max of 24 in. OC. Studs to be cut 1/2 in. less than assembly height.

TELLING INDUSTRIES L L C – TRUE-STUD™

2F. **Framing Members* – Steel Stud** – As an alternate to Items 2 through 2E- For use with Item 1F, proprietary channel shaped studs, min 3-5/8 in. wide fabricated from min 23 M50 steel, spaced a max of 24 in. OC. Studs to be cut 1/2 in. less than assembly height.

KIRRI (HONG KONG) LTD – TOE KIRRI

2G. **Framing Members* – Steel Studs** – Not shown - In lieu of Item 2 through 2F – For use with Item 1G. Proprietary channel shaped studs, minimum 3-5/8 in. wide, Studs to be cut 1/2 in. less than the assembly height.

STUDIO BUILDING SYSTEMS – CROCSTUD

2H. **Framing Members* – Steel Studs** – Not shown - In lieu of Item 2 – For use with Item 1H, proprietary channel shaped steel studs, 1-1/4 in. wide by min 3-5/8 in. deep fabricated from min 0.020 in. thick galv steel. Studs cut 3/4 in. less in length than assembly height.

TELLING INDUSTRIES L L C – Viper®2

3. **Batts and Blankets*** – (Optional) – Mineral wool or glass fiber batts partially or completely filling stud cavity.

See Batts and Blankets (B212) category for names of Classified companies.

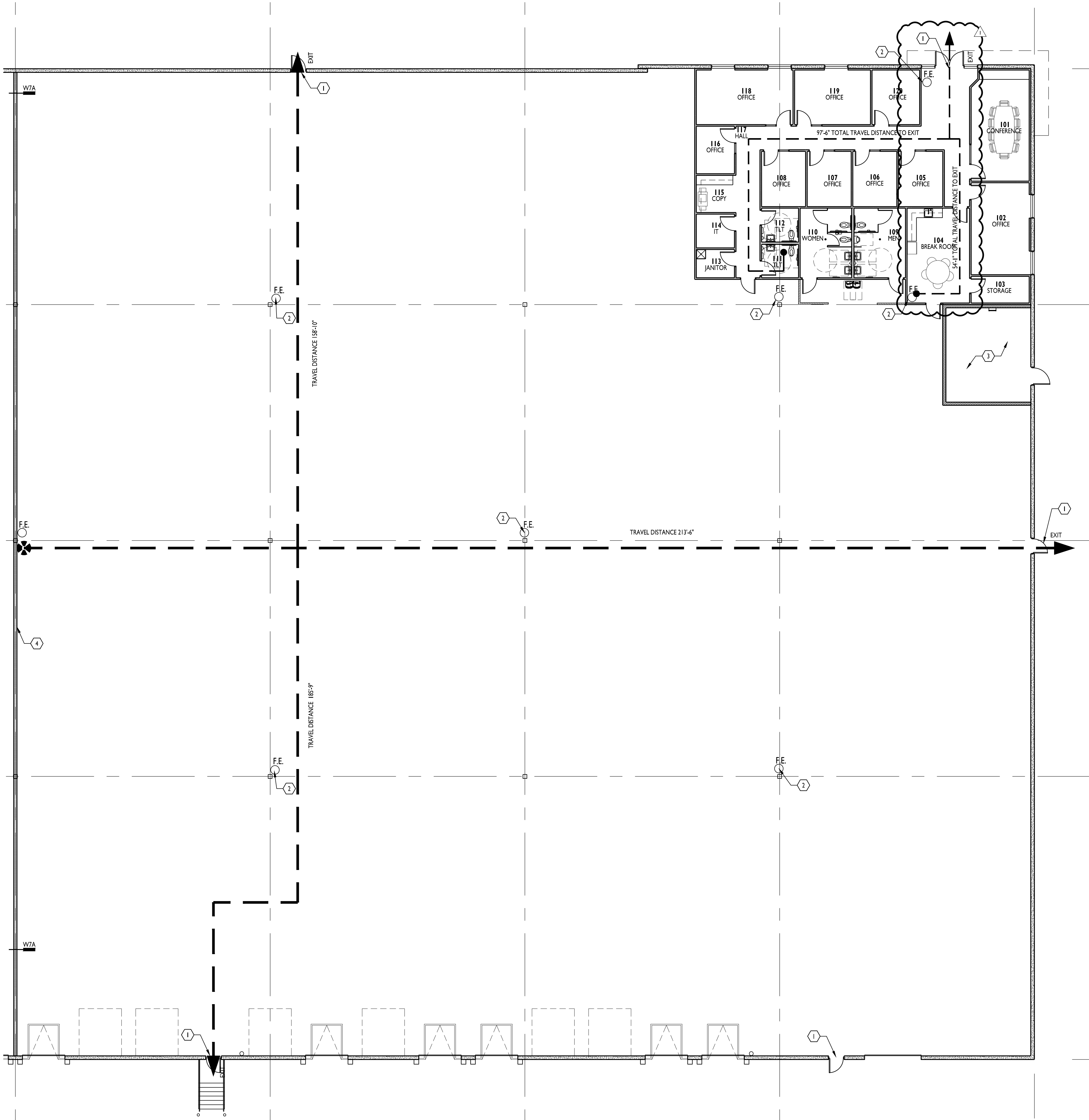
3A. **Fiber, Sprayed*** – As an alternate to Batts and Blankets (Item 3) – (100% Borate Formulation) – Spray applied cellulose material. The fiber is applied with water to complete the enclosed cavity in accordance with the application instructions supplied with the product with a nominal dry density of 2.7 lb/ft³. Alternate Application Method: The fiber is applied without water or with water at a nominal dry density of 3.5 lb/ft³, in accordance with the application instructions supplied with the product.

U S GREENBRIEF L L C – INS735 & INS475 for wet or dry application. INS765LD and INS770LD are not for use for dry application only.

3B. **Fiber, Sprayed*** – As an alternate to Batts and Blankets (Item 3) and Item 3A - Sprayed applied cellulose

http://database.ul.com/.../ANSUL-U-263&objid=107430743&cfdid=1077341824&version=versionless&parent_id=107398481&sequence=[18]/2013 8:57:01 AM]

<div><div><div><div><div><div>USG MEXICO S A DE C V – Types C, IP-X2, IPC-AR</div></div></div><div><div><div><div>5. Joint Tape and Compound – Vinyl, dry or premixed joint compound, applied in two coats to joints and screw heads. Paper tape, 2 in. wide, embedded in first layer of compound over all joints. As an alternate, nominal 1/32 in. thick gypsum veneer plaster may be applied to the entire surface of Classified veneer baseboard. Joints reinforced. Paper tape and joint compound may be omitted when gypsum boards are supplied with square edges.</div><div>6. Resilient Channel – (Optional-Not Shown) – 25 MSG galv steel resilient channels spaced vertically max 24 in. OC, flange portion attached to each intersecting stud with 1/2 in. long Type S-12 pan head steel screws. May not be used with Item 4F or 4I.</div><div>6A. Steel Framing Members (Not Shown)* – As an alternate to Item 6, furring channels and resilient sound isolation clip as described below.</div><div>a. Furring Channels – Formed of No. 25 MSG galv steel, 2-9/16 in. or 2-23/32 in. wide by 7/8 in. deep, spaced 24 in. OC perpendicular to studs. Channels secured to studs as described in Item b. Ends of adjoining channels are overlapped 6 in. and tied together with double strand of No. 18 SWG galv wire near each end of overlap. As an alternate, ends of adjoining channels may be overlapped 6 in. and secured together with two self-tapping No. 6 furring screws, min 7/16 in. long at the midpoint of the overlap, with one screw on each flange of the channel.</div><div>b. Framing Members* – Used to attach furring channels (Item a) to studs (Item 2). Clips spaced 48 in. OC, and secured to studs with 1-5/8 in. wall or hex head Type S steel screw through the center grommet. Furring channels are friction fitted into clips. RSC-1 clip for use with 2-9/16 in. wide furring channels. RSC-1 (2.75) clip for use with 2-23/32 in. wide furring channels.</div><div>PAC INTERNATIONAL INC – Types RSC-L, RSC-</div></div></div></div></div></div></div>
--



OVERALL LIFE SAFETY PLAN
1/32" = 1'-0"

KEYED NOTES

- EXIT, EXIT SIGN, AND EMERGENCY LIGHTING ABOVE DOOR
INTERIOR WITH BATTERY BACKUP. EXTERIOR EGRESS
LIGHTING ABOVE DOOR TIED TO BATTERY BACK UP.
- PROPOSED FIRE EXTINGUISHER LOCATION. VERIFY WITH FIRE
MARSHAL. FINAL QUANTITY AND LOCATIONS TO BE
DETERMINED WITH FINAL RACKING PLAN AND FIRE
DEPARTMENT REVIEW.
- EXISTING PUMP ROOM.
- 1 HOUR RATED DEMISING WALL, CENTERED ON COLUMN
LINE.

CODE ANALYSIS

APPLICABLE CODES

BUILDING CODE
2018 INTERNATIONAL BUILDING CODE

PLUMBING CODE
2017 INTERNATIONAL PLUMBING CODE

ELECTRICAL CODE
2017 NATIONAL ELECTRICAL CODE

FIRE CODE
2018 INTERNATIONAL FIRE CODE

MECHANICAL CODE
2014 INTERNATIONAL MECHANICAL CODE

FUEL GAS CODE
2018 FUEL GAS CODE

HANDICAPPED ACCESSIBILITY CODE
2009 ANSI A117.1
ADA ACCESSIBILITY GUIDELINES

OCCUPANCY (OVERALL BUILDING)

CLASSIFICATION (302.1): S-1

OCCUPANCY (TENANT SPACE)

CLASSIFICATION (302.1): S-1
ACCESSORY USES (508.2.1): B
NON-SEPARATED USES (508.3.2): N/A
SEPARATED USES (508.3.3): N/A

AUTOMATIC SPRINKLER SYSTEM

SPRINKLER SYSTEM REQUIRED (903): YES
SPRINKLER SYSTEM PROVIDED: YES

ALLOWABLE BUILDING HEIGHT

TABULAR HEIGHT (503): 2 STORY

ALLOWABLE BUILDING AREA

TABULAR AREA (503): 17,500 SF

BUILDING AREA INCREASE

INCREASE FOR SPRINKLERED BUILDING (506.3): 300%
UNLIMITED AREA (507): UNLIMITED
FRONTAGE INCREASE (506.2): N/A
 $I_f = (F/P - 25) \times W / 30$
TOTAL ALLOWABLE AREA WITH INCREASES:
 $A_2 = A_t + (A_t \times I_f) + (A_t \times I_s)$
 $A_2 = \text{FILL IN}$

ACTUAL BUILDING HEIGHT AND AREA

BUILDING AREA: 131,615 SF
BUILDING HEIGHT (FEET / # FLOORS): 42' / 1 FLR
TENANT AREA: 45,438 SF

TABULAR OCCUPANT LOAD (1004.1.2)

WAREHOUSE/STORAGE: 41,934/500
OFFICE: 3,504/100
TABULAR OCCUPANTS: 120

ACTUAL OCCUPANT LOAD (1004.1.2)

120

FIRE RESISTIVE REQUIREMENTS (601 AND 602)

CONSTRUCTION TYPE: II-B
STRUCTURAL FRAME: NR
EXTERIOR BEARING WALLS: NR
INTERIOR BEARING WALLS: NR
EXTERIOR NON-BEARING WALLS: NR
INTERIOR NON-BEARING WALLS: NR
FLOOR CONSTRUCTION: NR
ROOF CONSTRUCTION: NR
SHAFTS: N/A

FIRE RESISTANCE RATED CONSTRUCTION (704, 601, 602)
RATED EXTERIOR WALLS: N/A
FIRE SEPARATION DISTANCE: 60+
UNPROTECTED OPENING AREA: N/A

INTERIOR WALL AND CEILING FINISH REQUIREMENTS (803)
SEE FINISH SCHEDULE FOR MATERIALS
ALL MATERIALS ARE CLASS A RATED

FIRE PROTECTION SYSTEMS

STANDPIPE SYSTEM (905): YES
PORTABLE FIRE EXTINGUISHERS (906.1): SEE PLAN
FIRE ALARM AND DETECTION SYSTEMS (907): YES
SMOKE CONTROL SYSTEMS (909): N/A
SMOKE AND HEAT VENTS (910): N/A

EGRESS

MINIMUM WIDTH FACTOR (1005.1): 0.15"
REQUIRED MINIMUM WIDTH FROM SPACE (1005.1): 14.4"
MINIMUM NUMBER OF EXITS (1015): 1
ACTUAL NUMBER OF EXITS: 4
ACTUAL WIDTH OF EXITS: 180"
ALLOWABLE TRAVEL DISTANCE (1016.2): 400'
CORRIDOR CONSTRUCTION (1018.1): N/R
MINIMUM CORRIDOR WIDTH (1018.2): 44"
MAXIMUM DEAD END CORRIDOR (1018.4): 50'

PLUMBING FIXTURE COUNTS

REQUIRED FIXTURES S-1 (50 / 50 SPLIT MEN/WOMEN)

MEN-42 OCCUPANTS
TOILETS
LAVATORIES
WOMEN-42 OCCUPANTS
TOILETS
LAVATORIES
SERVICE SINKS
DRINKING FOUNTAINS

REQUIRED FIXTURES B (50 / 50 SPLIT MEN/WOMEN)

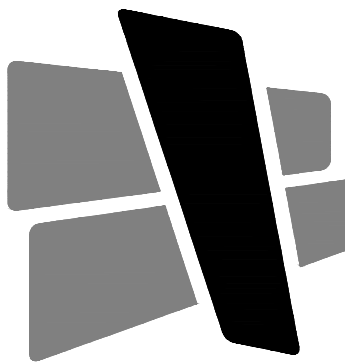
MEN-18 OCCUPANTS
TOILETS
LAVATORIES
WOMEN-18 OCCUPANTS
TOILETS
LAVATORIES
SERVICE SINKS
DRINKING FOUNTAINS

PROVIDED FIXTURES
MEN

TOILETS
URINAL
LAVATORIES

WOMEN
TOILETS
LAVATORIES

SERVICE SINKS
DRINKING FOUNTAINS



CURRAN
ARCHITECTURE

5719 LAWTON LOOP E. DR. #212
INDIANAPOLIS, IN 46216
O :: 317 . 288 . 0681
F :: 317 . 288 . 0753

CERTIFICATION



THIS DRAWING AND THE IDEAS, DESIGNS
AND CONCEPTS CONTAINED HEREIN ARE
THE EXCLUSIVE INTELLECTUAL PROPERTY
OF CURRAN ARCHITECTURE, AND ARE NOT
TO BE USED OR REPRODUCED, WHOLE OR
IN PART, WITHOUT THE WRITTEN
CONSENT OF CURRAN ARCHITECTURE.
© COPYRIGHT 2023, CURRAN ARCHITECTURE

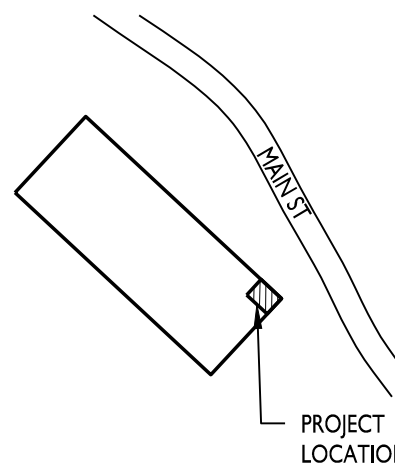
PROJECT INFORMATION

MIDWEST DISTRIBUTION TI

1220 NW MAIN STREET
LEE'S SUMMIT, MO 64086

ISSUE DATES

PERMIT SET 08.29.23
PERMIT REVIEW COMMENT 09.11.23



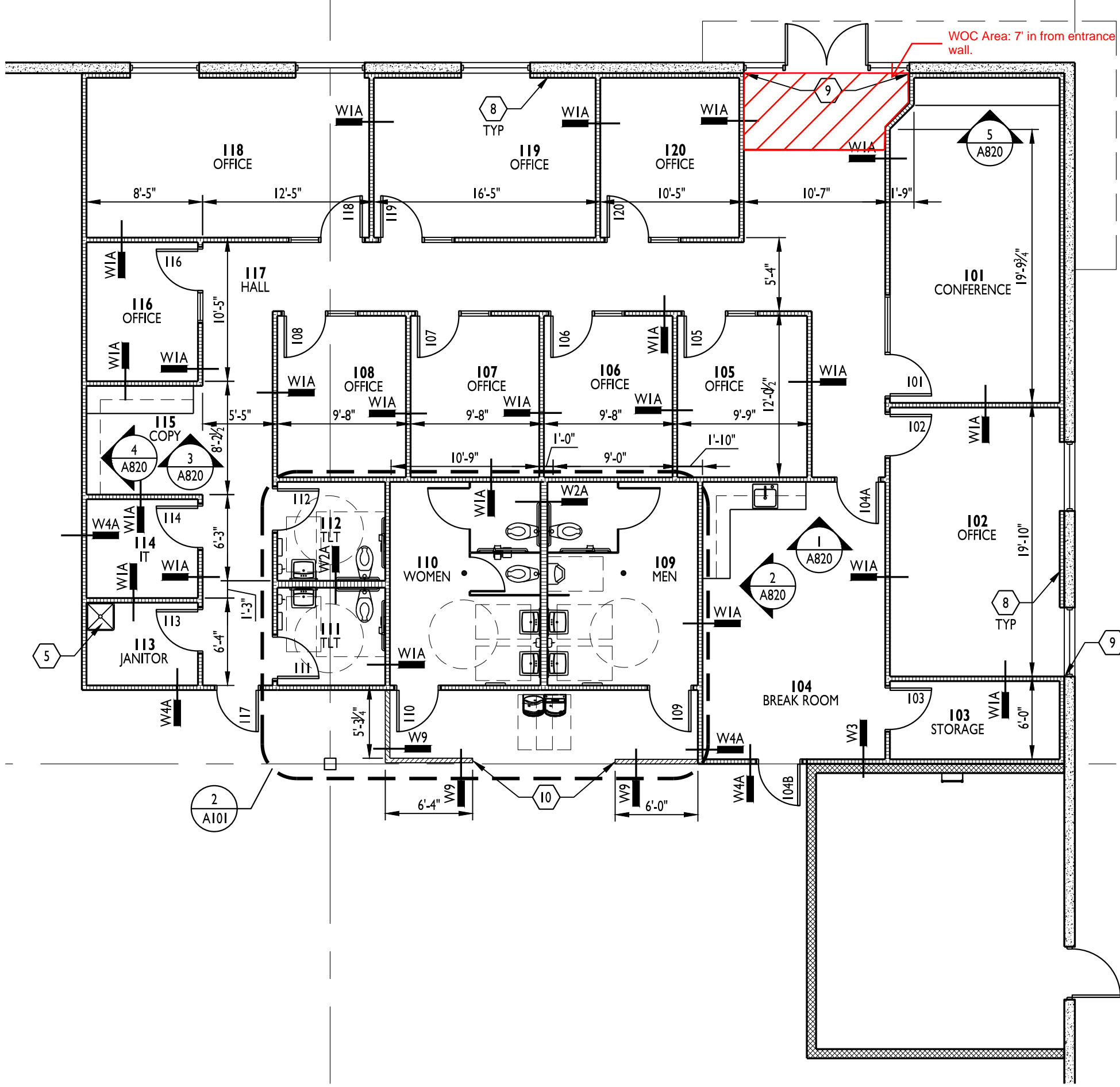
KEY PLAN

230139

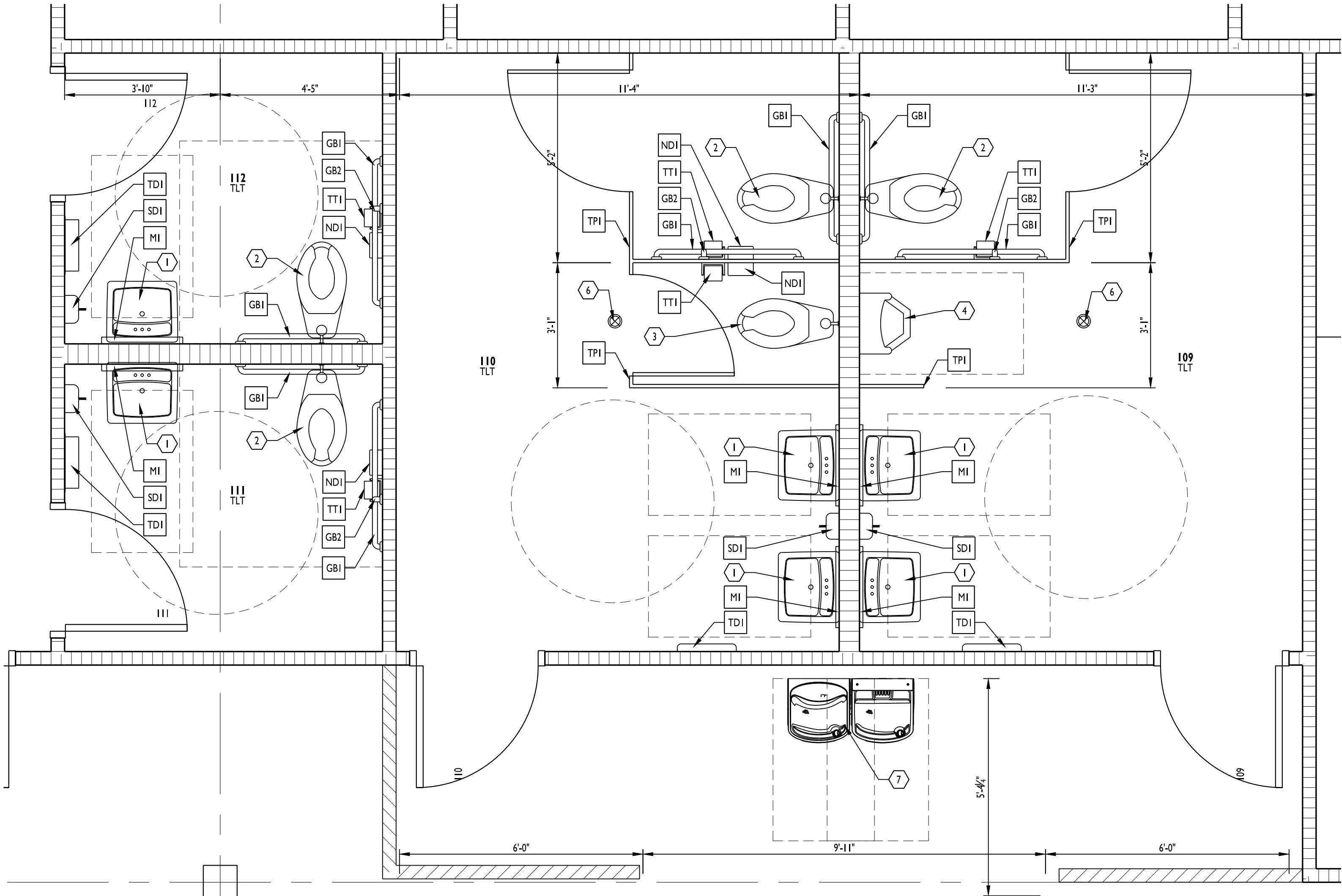
LIFE SAFETY PLAN

A100

TOILET ACCESSORY SCHEDULE			
MARK	SYMBOL	MFR #	DESCRIPTION
TT1		BOBRICK B-2888	MULTI-ROLL TOILET TISSUE DISPENSER
GB1		BOBRICK B-5806 X 36 B-5806 X 42	36" AND 42" GRAB BARS
GB2		BOBRICK B-5806 X 18	18" VERTICAL GRAB BAR
M1		BOBRICK B-165	MIRROR 2'-0" X 4'-0"
TD1		BOBRICK B-3944	TOWEL DISPENSER / WASTE RECEPTACLE
SD1		BOBRICK B-2112	SOAP DISPENSER
ND1		BOBRICK B-353 B-270	B-353: SANITARY NAPKIN DISPOSAL UNIT AT GWB LOCATIONS. B-270: SURFACE MOUNT SANITARY NAPKIN DISPOSAL UNIT AT PARTITIONS
TP1		GENERAL	TOILET PARTITION AND/OR URINAL SCREEN STAINLESS STEEL URINAL SCREEN BOTTOM 12" FROM FLOOR AND TOP 60" MAX FROM FLOOR



OFFICE FLOOR PLAN



ENLARGED RESTROOM PLAN

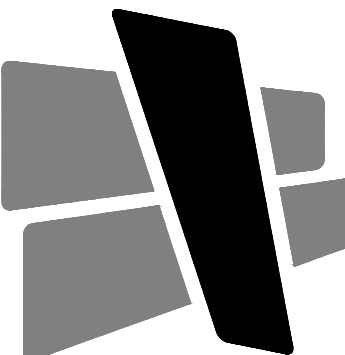
GENERAL NOTES

- CONTRACTOR SHALL BE RESPONSIBLE FOR VERIFICATION OF ALL DIMENSIONS AND JOB CONDITIONS. ANY DEVIATION FROM WHAT IS NOTED IN DRAWINGS SHALL BE BROUGHT TO THE ATTENTION OF THE ARCHITECT IMMEDIATELY.
- ALL DIMENSIONS SHOWN ARE FACE OF BRICK, MASONRY OR METAL STUD FRAMING, UNLESS OTHERWISE NOTED.
- PROVIDE DEEP LEG DEFLECTION TRACK AT ALL METAL STUD CONNECTIONS WITH STRUCTURE ABOVE, TYPICAL.
- PROVIDE FIRE RATED WOOD BLOCKING IN METAL STUD WALLS FOR ANY WALL SUPPORTED ITEMS.
- PROVIDE APPROVED FIRE RATED STOPPING MATERIALS IN ANY OPENINGS IN FIRE RATED ASSEMBLIES.
- REFER TO DOOR AND WINDOW SCHEDULES FOR ALL MATERIALS, FINISHES, AND HARDWARE INFORMATION.
- REFER TO EXTERIOR ELEVATIONS FOR ALL BRICK, MASONRY, AND OTHER EXPANSION JOINT LOCATIONS.
- ALL MATERIALS LOCATED IN CEILING PLENUM SHALL BE RATED FOR SUCH INSTALLATION OR PROTECTED TO PROVIDE COMPLIANCE. THIS INCLUDES BUT IS NOT LIMITED TO INSULATION (FHC 25/50) POWER AND LOW VOLTAGE WIRING, TELECOMMUNICATIONS CABLING, PLUMBING SUPPLY AND DRAIN LINES AND SUPPORTING BRACKETS AND/OR BLOCKING FOR CEILING HUNG ITEMS.
- PRIOR TO ORDERING ANY PRODUCTS, CONTRACTOR SHALL SUBMIT SAMPLES TO THE ARCHITECT OF ALL FINISH MATERIALS TO BE USED ON THE PROJECT. THE CONTRACTOR SHALL BEAR SOLE RESPONSIBILITY FOR ANY MATERIALS ORDERED INCORRECTLY WHEN THAT MATERIAL WAS NOT REVIEWED BY THE ARCHITECT.
- PROVIDE CONCRETE FILLED STEEL PIPE BOLLARDS AT ALL REQUIRED UTILITY EQUIPMENT LOCATIONS SUCH AS GAS METERS, ELECTRICAL TRANSFORMER PANELS, ETC.. COORDINATE WITH UTILITY COMPANY AND CONTRACTORS, WHEN APPLICABLE, FOR NECESSARY LOCATIONS. REFER TO CIVIL DRAWINGS FOR BOLLARD SPECIFICATIONS AND ADDITIONAL INFORMATION.
- ALL DOORS, UNLESS OTHERWISE NOTED, TO HAVE HINGE SIDE SET 4" FROM CORNER SHOWN TO OUTSIDE OF FRAME.
- UNLESS SPECIFIED ELSEWHERE, ALL INTERIOR SLABS AND SLAB INFILLS TO BE FF-50/FL-25 OVERALL AND FF-35/FL-25 LOCAL.
- ALL EXIT DOORS TO HAVE TACTILE EXIT SIGNAGE PER 703.4 OF THE ANSI 117.1 2009.


KEYED NOTES

- ADA COMPLIANT WALL MOUNTED LAVATORY. PROVIDE SCALD GUARDS ON SUPPLY/WASTE LINE. REFER TO PLUMBING DWGS. SEE TYPICAL ACCESSIBILITY DETAILS FOR ACCESSIBLE MOUNTING INFORMATION.
- ADA COMPLIANT FLOOR MOUNT TOILET W/ FLUSH VALVE CONTROLS. REFER TO PLUMBING DWGS. SEE TYPICAL ACCESSIBILITY DETAILS FOR ACCESSIBLE MOUNTING INFORMATION.
- STANDARD HEIGHT FLOOR MOUNT TOILET W/ FLUSH VALVE CONTROLS. CENTER IN WIDTH OF STALL.
- ADA COMPLIANT WALL MOUNTED URINAL W/ FLUSH VALVE CONTROL. CENTER IN WIDTH OF STALL. REFER TO PLUMBING DRAWINGS. SEE TYPICAL ACCESSIBILITY DETAILS FOR ACCESSIBLE MOUNTING INFORMATION.
- FIBERGLASS MOP SINK W/ WALL MOUNT FAUCET. PROVIDE FRP ON WALLS BEHIND SINK TO 48" AFF. EXTEND MIN. 2" PAST SINK EDGE.
- FLOOR DRAIN
- ADA COMPLIANT HI-LOW WATER COOLER.
- FURR OUT WALL WITH 3/8" METAL STUDS W/ R-11 BATT INSULATION. COVER W/ VAPOR BARRIER AND 5/8" GYP BD. EXTEND TO MIN. 4" ABOVE CEILING LINE.
- ALIGN W/ EDGE OF MULLION.
- PROVIDE 2"x2"x6" POST IN WALL BOLTED TO SLAB TO SUPPORT WALL.

KEY PLAN


CURRAN
ARCHITECTURE
5719 LAWTON LOOP E. DR. #212
INDIANAPOLIS, IN 46216
O :: 317 . 288 . 0681
F :: 317 . 288 . 0753

CERTIFICATION



THIS DRAWING AND THE IDEAS, DESIGNS AND CONCEPTS CONTAINED HEREIN ARE THE EXCLUSIVE INTELLECTUAL PROPERTY OF CURRAN ARCHITECTURE, AND ARE NOT TO BE USED OR REPRODUCED, WHOLE OR IN PART, WITHOUT THE WRITTEN CONSENT OF CURRAN ARCHITECTURE.
© COPYRIGHT 2023, CURRAN ARCHITECTURE

PROJECT INFORMATION

MIDWEST DISTRIBUTION TI

1220 NW MAIN STREET
LEE'S SUMMIT, MO 64086

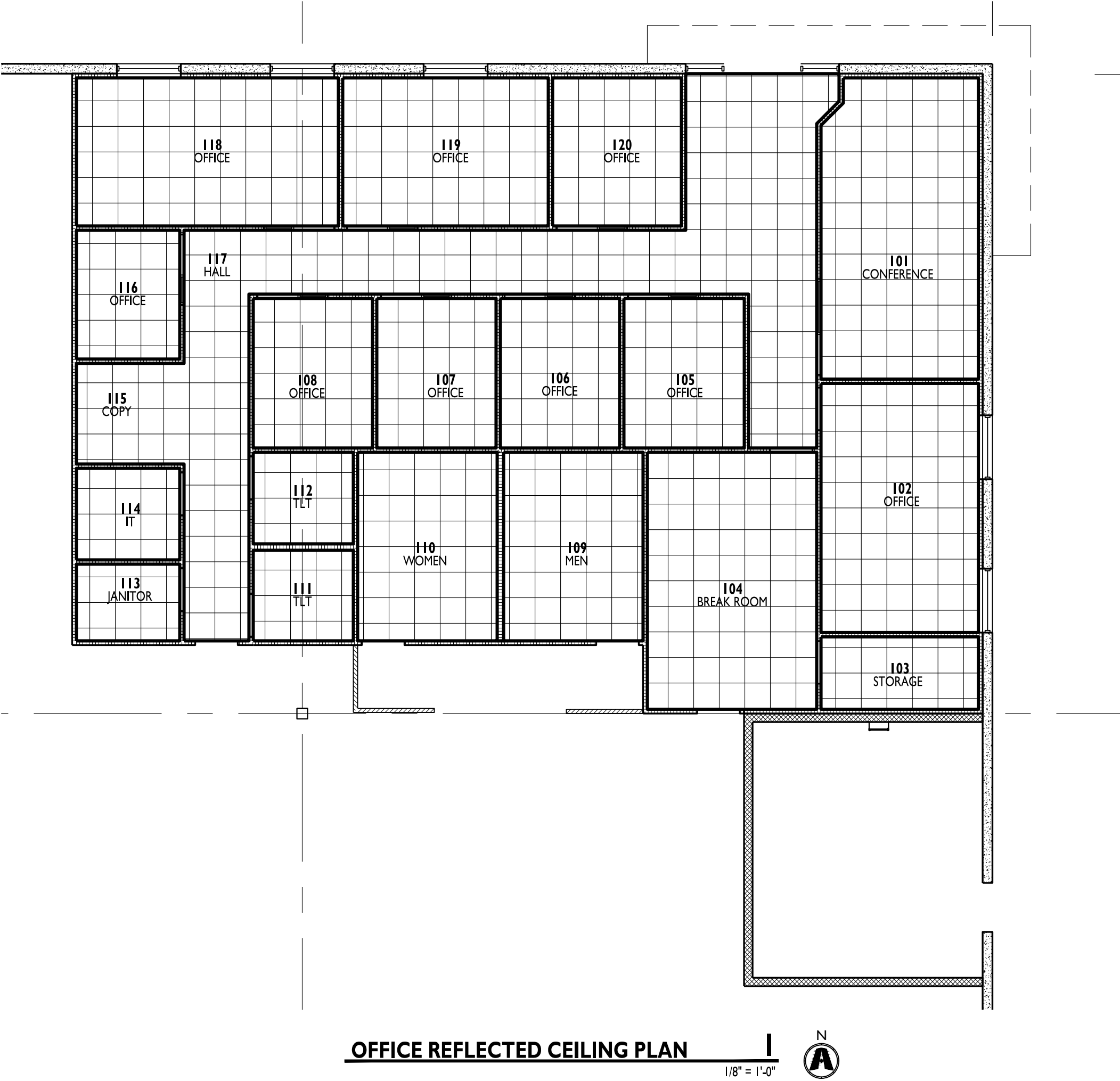
ISSUE DATES

PERMIT SET 08.29.23

230139

FLOOR PLAN

A101



CEILING LEGEND

(NOT ALL MAY APPLY)

ACOUSTICAL TILE CEILING / GRID. REFER TO FINISH SCHEDULE FOR TYPE AND HEIGHT.

GYPSUM BOARD BULKHEAD OR CEILING. HEIGHT AS NOTED ON SCHEDULE OR KEYNOTES.

CURRAN

ARCHITECTURE

5719 LAWTON LOOP E. DR. #212
INDIANAPOLIS, IN 46216
O :: 317 . 288 . 0681
F :: 317 . 288 . 0753

CERTIFICATION

THIS DRAWING AND THE IDEAS, DESIGNS AND CONCEPTS CONTAINED HEREIN ARE THE EXCLUSIVE INTELLECTUAL PROPERTY OF CURRAN ARCHITECTURE, AND ARE NOT TO BE USED OR REPRODUCED, WHOLE OR IN PART, WITHOUT THE WRITTEN CONSENT OF CURRAN ARCHITECTURE.
© COPYRIGHT 2023, CURRAN ARCHITECTURE

PROJECT INFORMATION

MIDWEST DISTRIBUTION TI

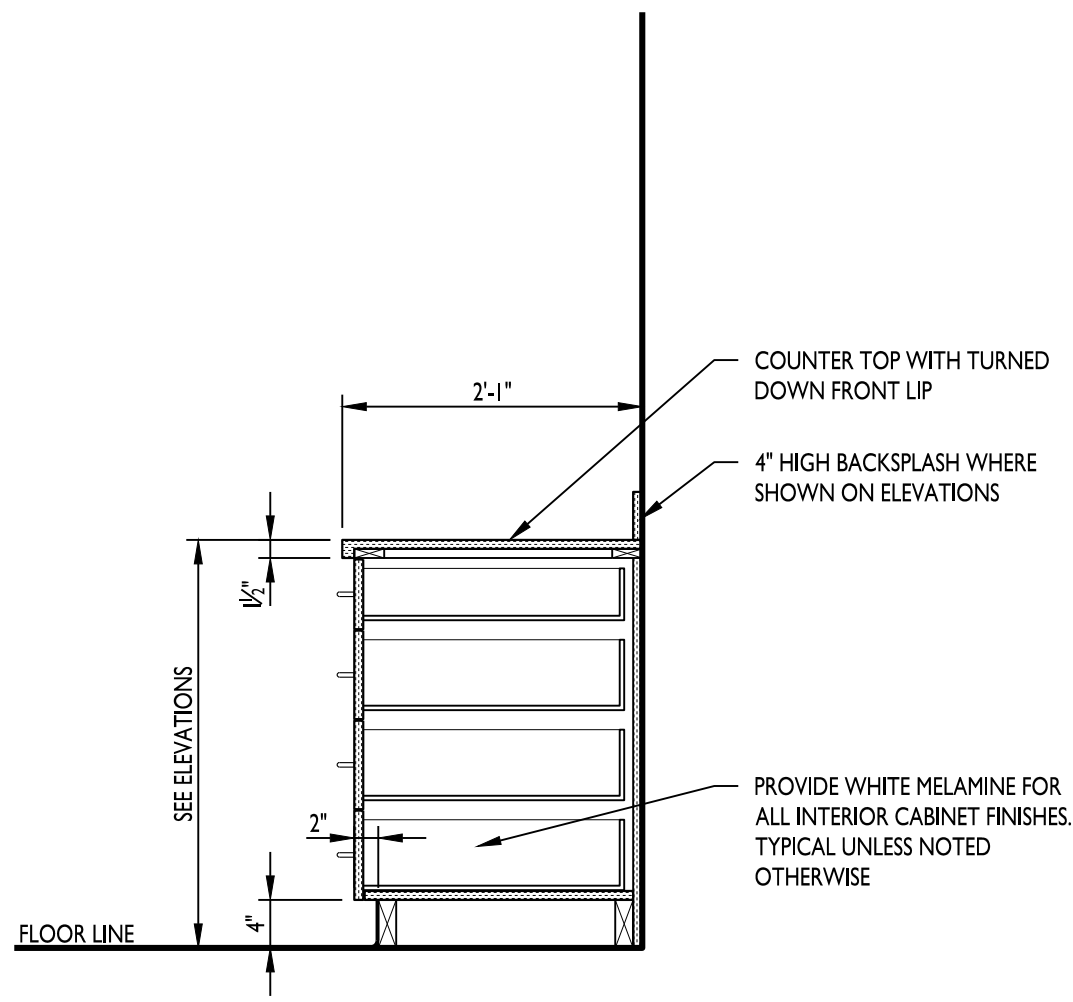
1220 NW MAIN STREET
LEE'S SUMMIT, MO 64086

ISSUE DATES

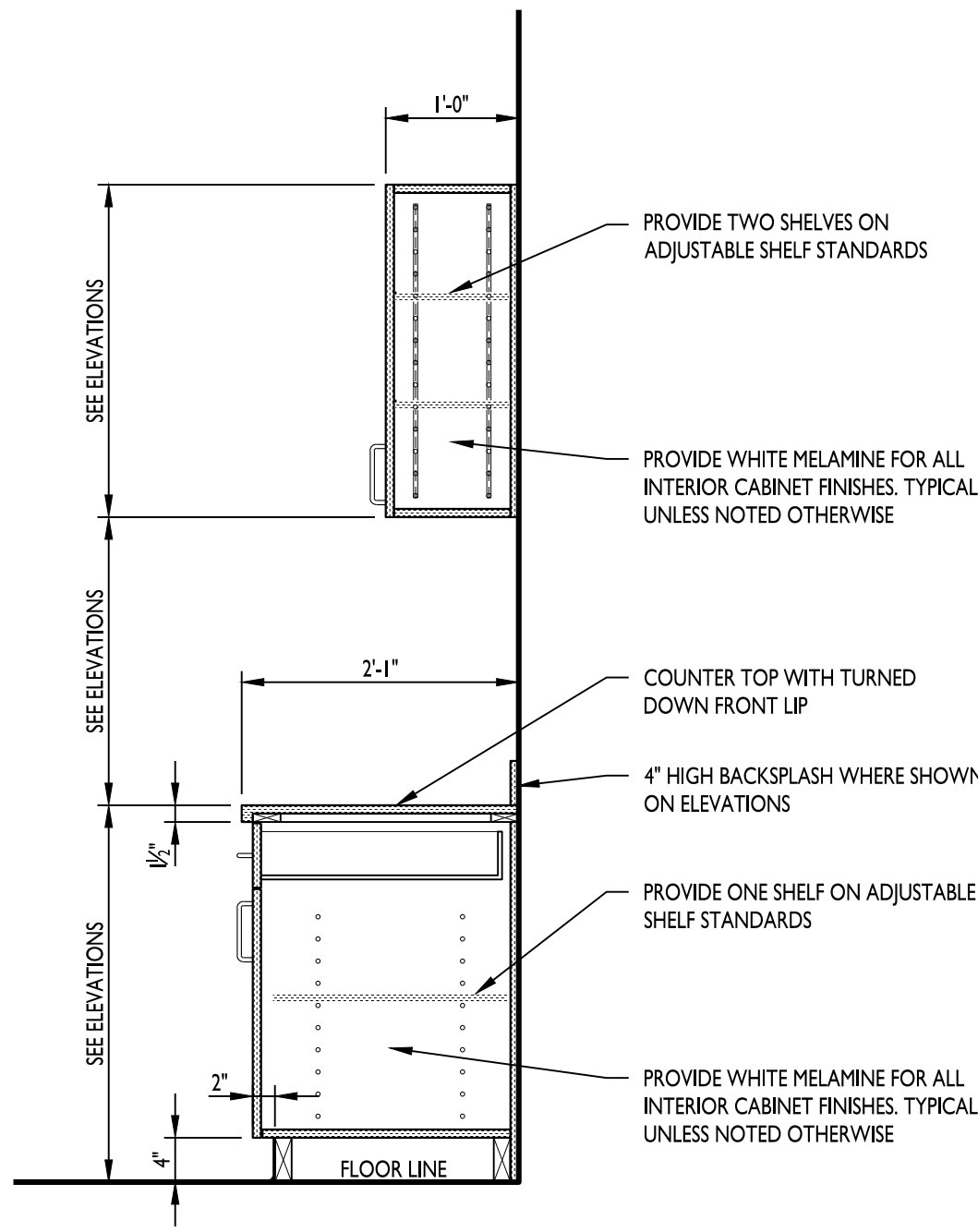
PERMIT SET	08.29.23
230139	

PROJECT LOCATION

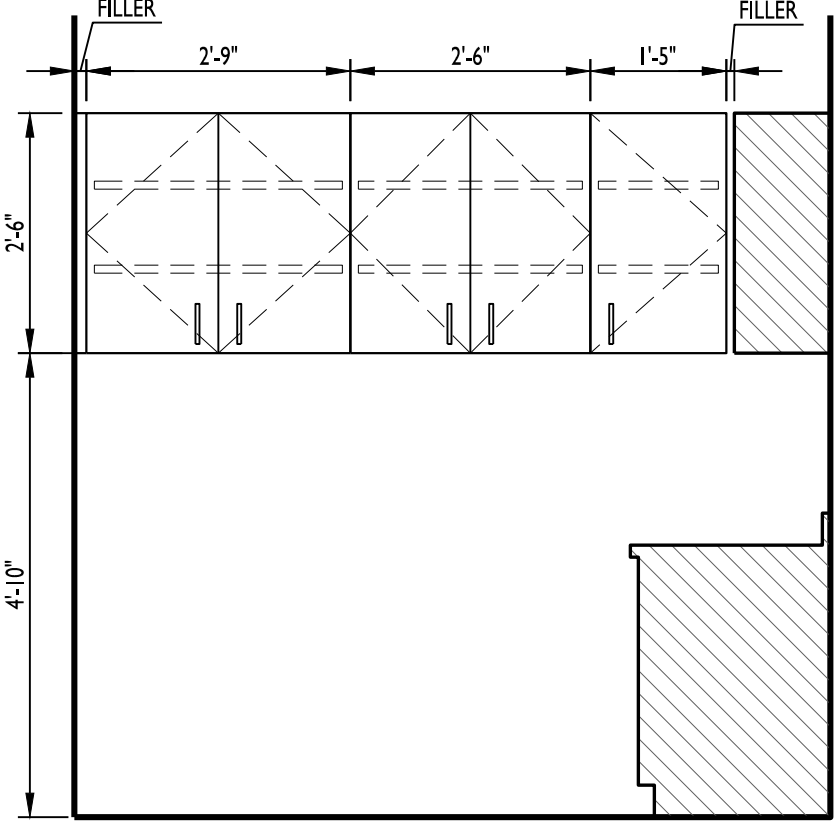
KEY PLAN



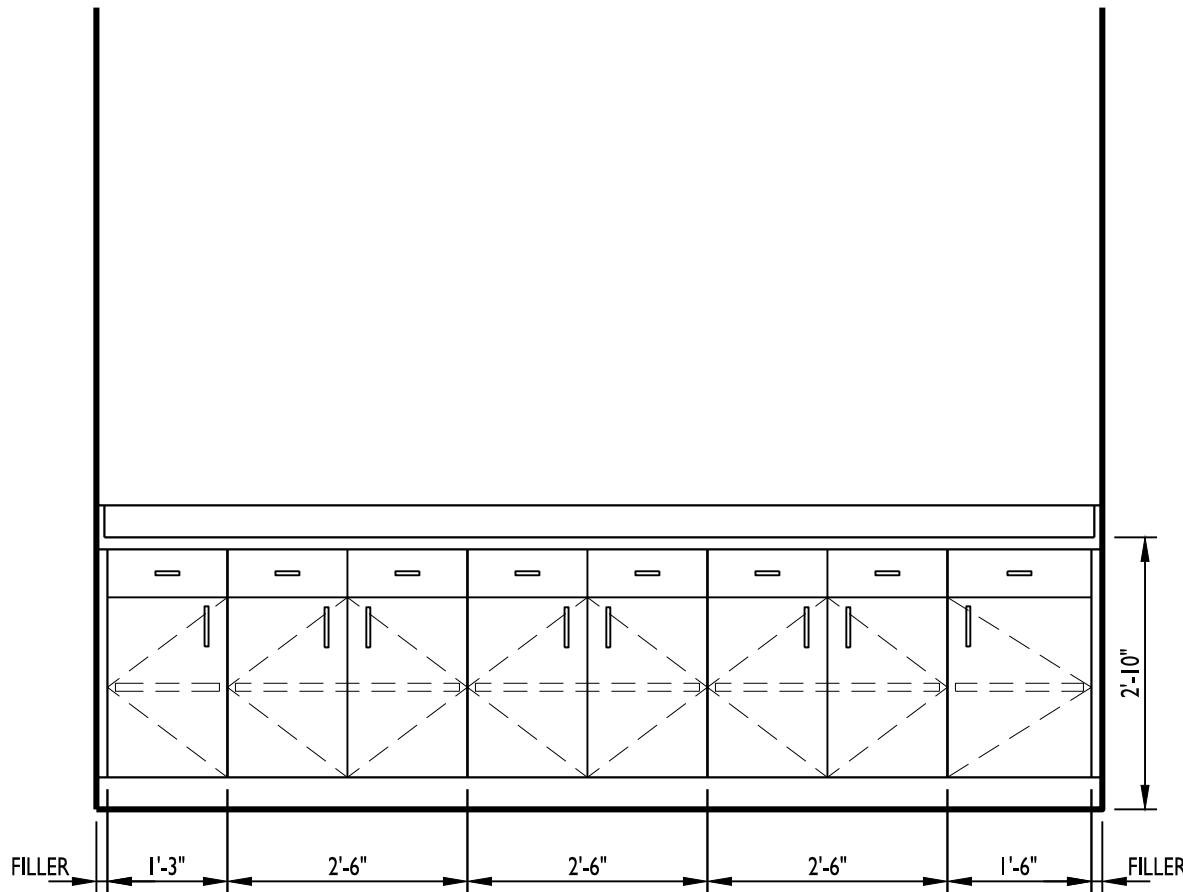
ELEVATION 7
3/4" = 1'-0"



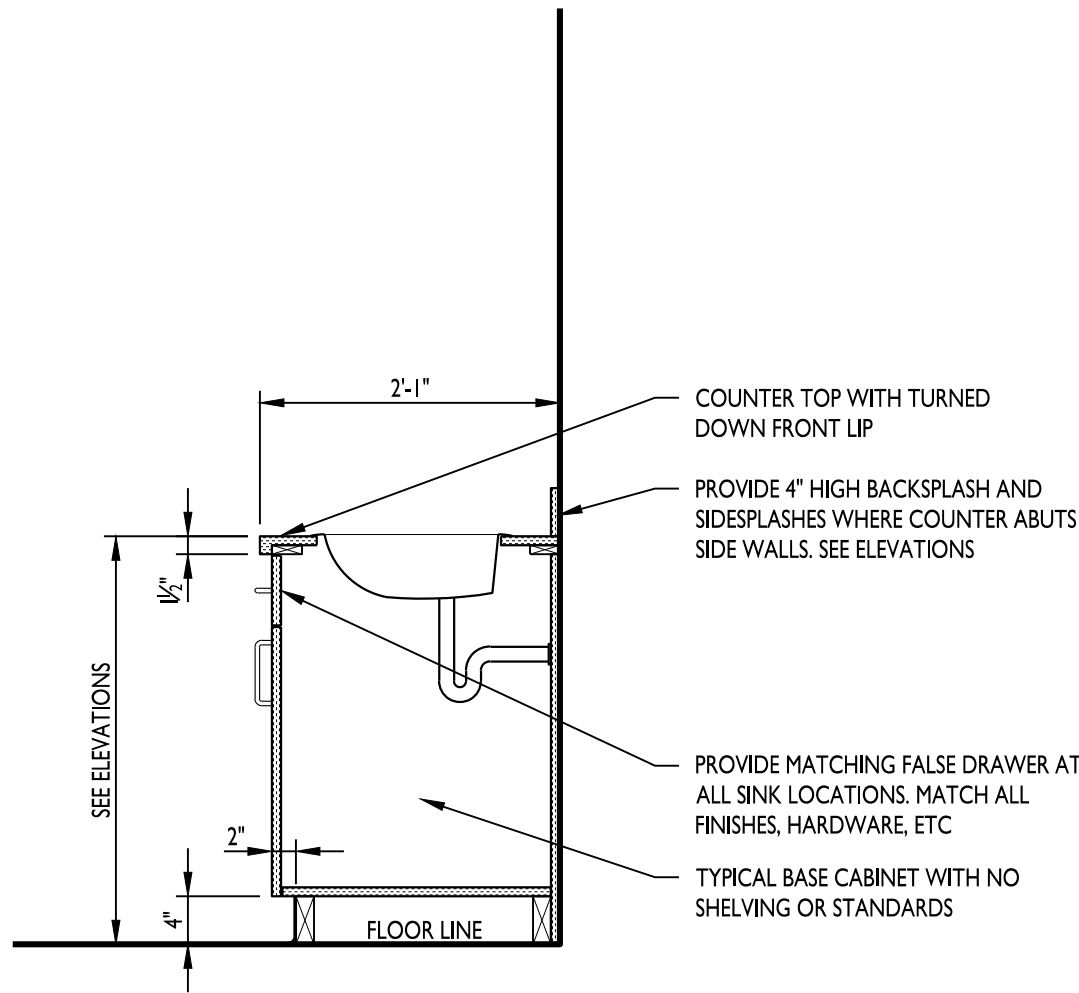
ELEVATION 8
3/4" = 1'-0"



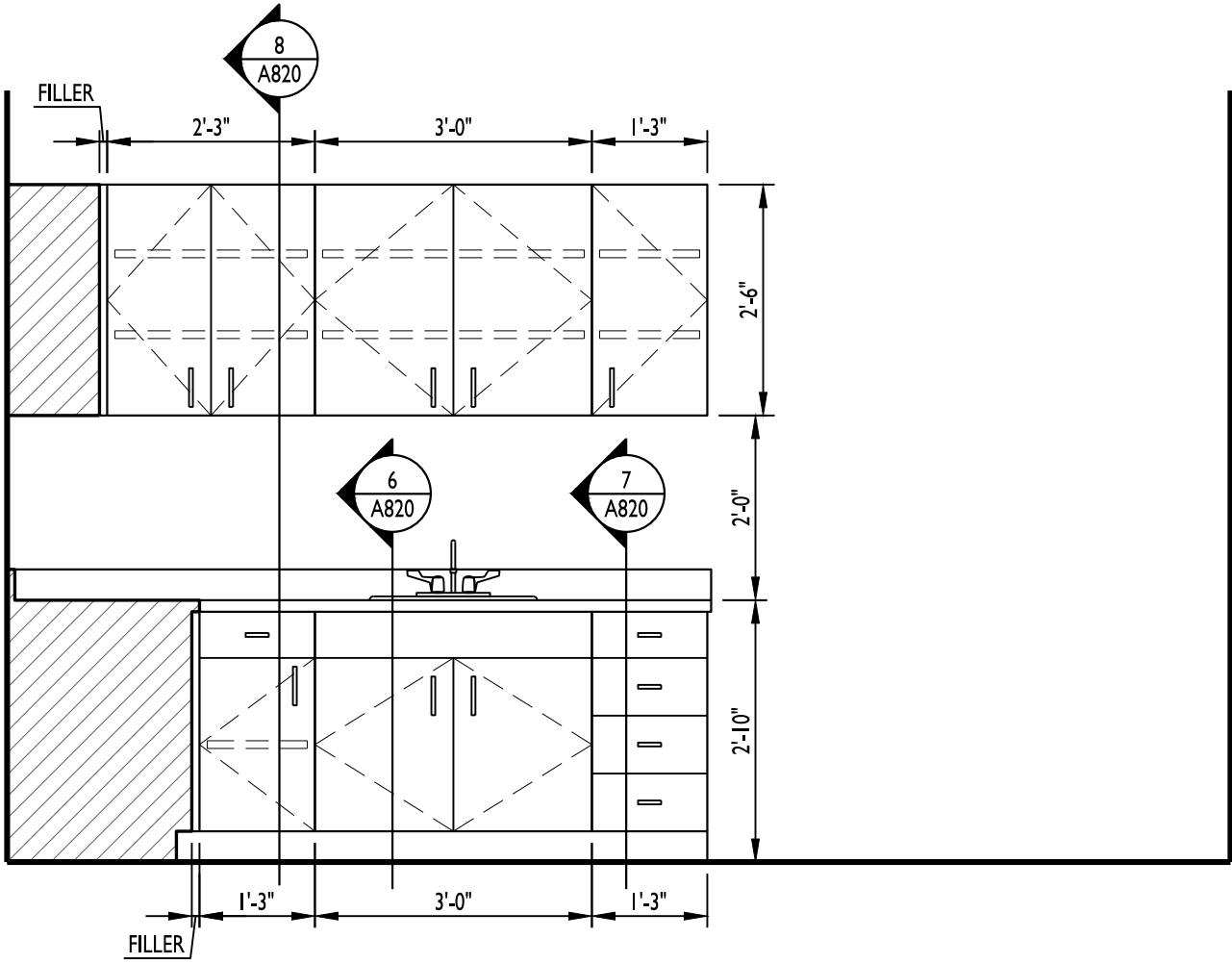
ELEVATION 4
1/2" = 1'-0"



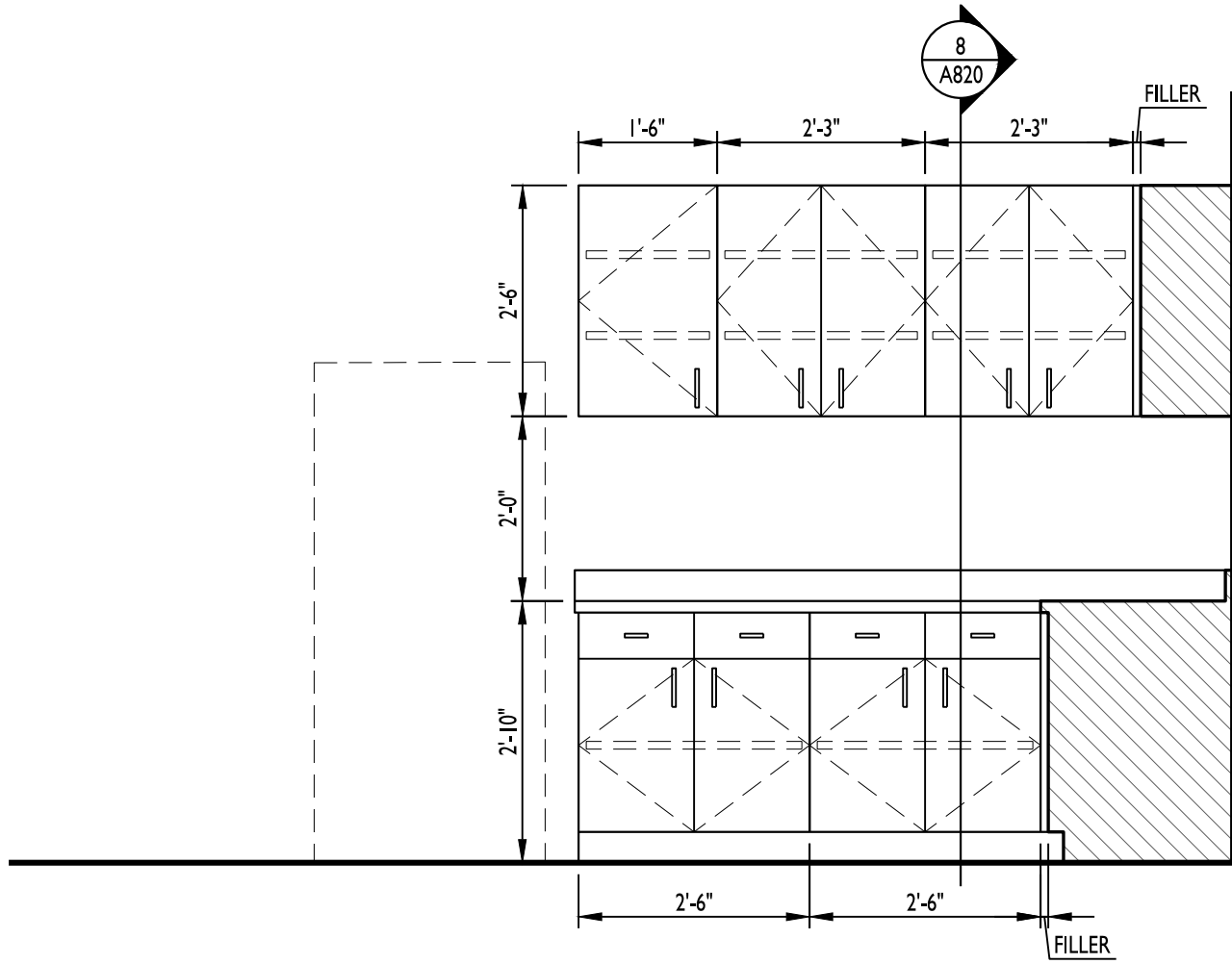
ELEVATION 5
1/2" = 1'-0"



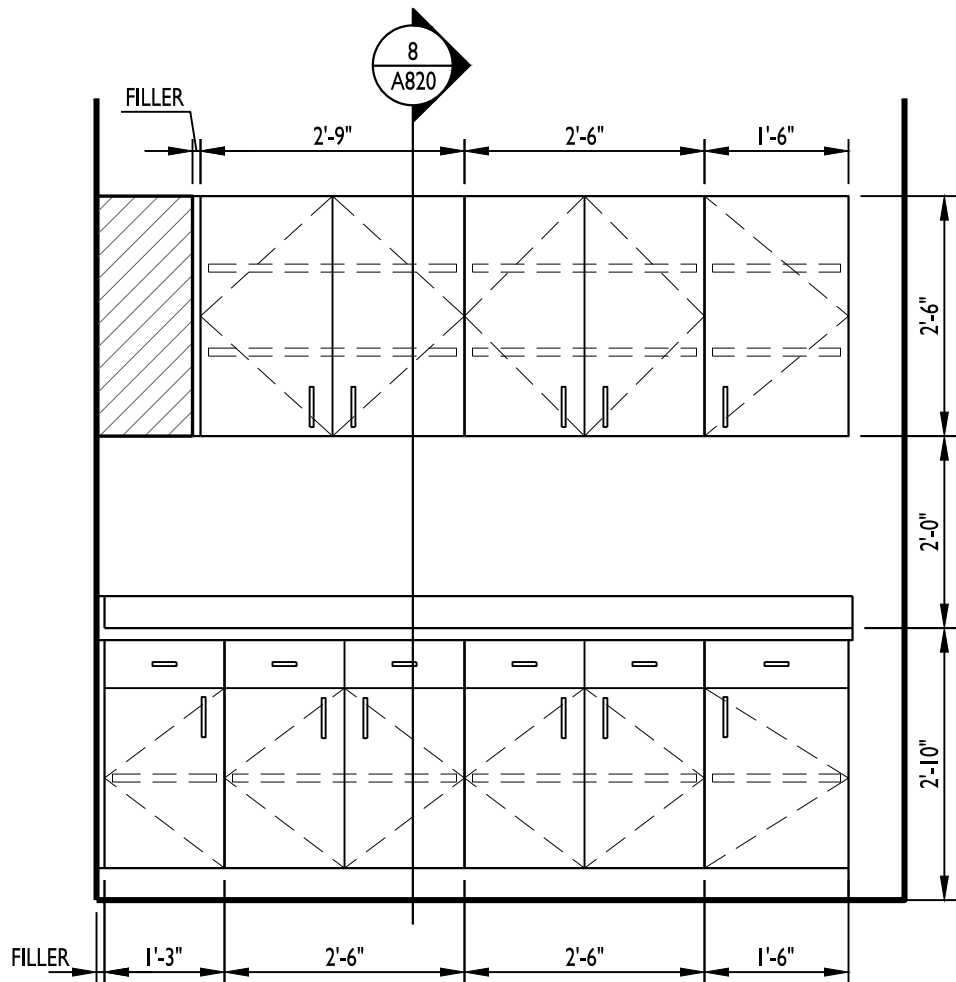
ELEVATION 6
3/4" = 1'-0"



ELEVATION 1
1/2" = 1'-0"



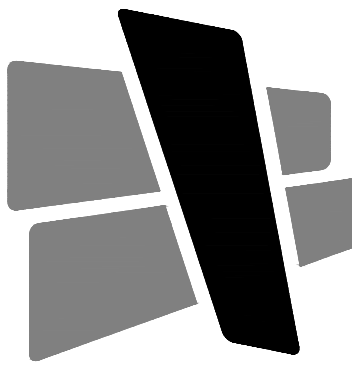
ELEVATION 2
1/2" = 1'-0"



ELEVATION 3
1/2" = 1'-0"

CASEWORK GENERAL NOTES

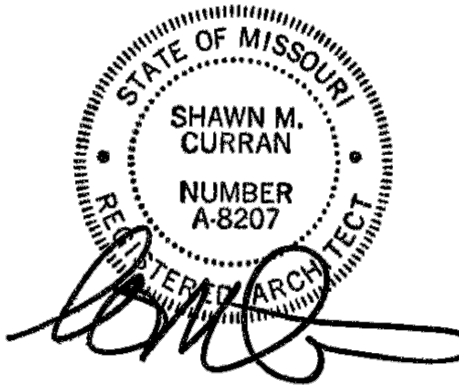
- UNLESS SPECIFICALLY OTHERWISE NOTED, PROVIDE SELF EDGE ALONG EXPOSED FACES OF ALL COUNTER TOPS.
- PROVIDE WOOD F.R. BLOCKING IN WALL WHERE REQUIRED FOR WALL AND/OR BASE CABINET INSTALLATION. COORDINATE WITH CABINET MANUFACTURER PRIOR TO BLOCKING BEING INSTALLED. AT EXTERIOR WALL PROVIDE TREATED WOOD BLOCKING.
- CONTRACTOR IS RESPONSIBLE FOR PROVIDING ADA COMPLIANT CABINETS, HANDLES, CLEAR SPACES BELOW CABINETS WHERE REQUIRED ETC. WHETHER SHOWN ON THESE DETAILS OR NOT. COORDINATE WITH ARCHITECT IF ANY DISCREPANCIES ARISE.
- IF SEPARATE SPECIFICATIONS ARE INCLUDED WITH THIS PROJECT THOSE DOCUMENTS WILL SUPERCEDE WHAT IS SHOWN AND/OR DETAILED ON THIS DRAWING. OTHERWISE THIS DRAWING AND DETAILS REPRESENT THE MINIMUM REQUIRED STANDARDS OF CONSTRUCTION FOR ALL BASE CABINETS, COUNTER TOPS, UPPER CABINETS, ETC.
- REFER TO FLOOR PLAN FOR ALL LENGTHS OF CABINET RUNS AS WELL AS LOCATIONS. REFER TO THE REFLECTED CEILING PLAN (IF INCLUDED) FOR ALL BULKHEAD LOCATIONS AND HEIGHTS.
- CASEWORK INSTALLER IS RESPONSIBLE FOR COORDINATING INSTALLATION OF ALL DIVISION 22 AND DIVISION 26 ITEMS (INCLUDING CUT OUTS) IN CASEWORK OR COUNTERTOPS. LOCATIONS AND CUT OUT COORDINATION ALSO REQUIRED FOR RECEPTACLES (DIVISION 26) IN MICROWAVE WALL CABINETS, DISHWASHER LOCATIONS, GARBAGE DISPOSAL LOCATIONS, ETC.
- PROVIDE FINISHED ENDS ON CABINETS WHERE END OF CABINET IS EXPOSED BEYOND WALL LINE, UNDER COUNTER, AT KNEE SPACE AND AT ALL SIMILAR EXPOSED AREAS.
- UNLESS NOTED OTHERWISE PROVIDE EQUAL WIDTH FILLER/SCRIBE BETWEEN WALL AND CASEWORK AT ALL LOCATIONS WHERE NONE IS SHOWN. MAXIMUM WIDTH IS TO BE 2".
- CONTRACTOR SHALL FIELD VERIFY AND CHECK ALL CONDITIONS, LOCATIONS AND DIMENSIONS PRIOR TO STARTING ANY WORK. REPORT ANY DISCREPANCIES TO ARCHITECT.
- ANY AND ALL PARTS OF ANY CABINETS OR COUNTERS THAT ARE VISIBLE MUST BE FINISHED WITH MATERIAL TO MATCH ADJACENT FINISHES. NOTIFY AND COORDINATE WITH ARCHITECT IF AREAS OF UNSPECIFIED FINISHES EXIST.
- UNLESS NOTED OTHERWISE REFER TO ROOM FINISH SCHEDULE FOR ALL CABINET FINISHES AND MATERIALS AS WELL AS ALL OTHER ASSOCIATED, MISCELLANEOUS FINISH REQUIREMENTS, UNLESS NOTED OTHERWISE ALL INTERIOR COMPONENTS TO BE WHITE MELAMINE.
- EASE ALL EXPOSED OUTSIDE EDGES AT ALL COMPONENTS FOR ITEMS SHOWN ON THIS SHEET.
- REFER TO ROOM FINISH SCHEDULE FOR ALL WALL BASE REQUIREMENTS.



CURRAN
ARCHITECTURE

5719 LAWTON LOOP E. DR. #212
INDIANAPOLIS, IN 46216
O :: 317 . 288 . 0681
F :: 317 . 288 . 0753

CERTIFICATION



THIS DRAWING AND THE IDEAS, DESIGNS AND CONCEPTS CONTAINED HEREIN ARE THE EXCLUSIVE INTELLECTUAL PROPERTY OF CURRAN ARCHITECTURE, AND ARE NOT TO BE USED OR REPRODUCED, WHOLE OR IN PART, WITHOUT THE WRITTEN CONSENT OF CURRAN ARCHITECTURE.
© COPYRIGHT 2023, CURRAN ARCHITECTURE

PROJECT INFORMATION

MIDWEST DISTRIBUTION TI

1220 NW MAIN STREET
LEE'S SUMMIT, MO 64086

ISSUE DATES

PERMIT SET 08.29.23

230139

CASEWORK ELEVATIONS

A820