

**FLOOR PLAN-PLUMBING**  
SCALE: 3/64" = 1'-0"

**FLOOR PLAN NOTES**

1. CONNECT SUMP PUMP DISCHARGE LINE TO EXISTING 4" HUB DRAIN IN THIS VICINITY. CONTRACTOR TO VERIFY EXACT LOCATION PRIOR TO CONSTRUCTION.
2. CONNECT TO EXISTING COLD WATER PIPING OF EQUAL OR GREATER SIZE THIS VICINITY. CONTRACTOR TO FIELD VERIFY EXACT SIZE, LOCATION AND ELEVATION OF EXISTING PIPING PRIOR TO CONSTRUCTION.
3. CONNECT NEW 4" WASTE LINE TO EXISTING WASTE LINE THIS VICINITY. CONTRACTOR TO FIELD VERIFY EXACT LOCATION AND ELEVATION OF EXISTING WASTE LINE PRIOR TO CONSTRUCTION.
4. CONNECT NEW NATURAL GAS LINE TO EXISTING NATURAL GAS LINE ON ROOF THIS VICINITY. CONTRACTOR TO FIELD VERIFY EXACT LOCATION AND ELEVATION OF EXISTING LINE PRIOR TO CONSTRUCTION.
5. CONNECT TO ROOFTOP EQUIPMENT WITH GAS COCK, DIRT LEG, AND UNION.

**PRO DESIGN CONTRACTORS**  
918 E. Warren St., Gardener, KS 66030  
Phone: 785.433.1561

**Lankford Fendler**  
+ associates  
1780 Walnut Street Kansas City, Missouri 64108  
1915 Frederick Avenue, St. Joseph, Missouri 64501  
Phone: 816.221.1411 | Fax: 816.221.1429  
LANKFORD | FENDLER + ASSOCIATES, CONSULTING ENGINEERS, INC.  
COPYRIGHT © 2023 Project No. 23-7218.13  
C04 No. 2006001168

**GMA ARCHITECTS**  
7330 Clayton Rd., Suite 300  
St. Louis, MO 63117  
P: 314.822.5191  
www.gma-architects.com

**ARCO NATIONAL CONSTRUCTION-KC**  
5015 NW Canal Street  
Suite 110  
Riverside, MO 64150  
P: 816.282.6324  
www.arcnational.com/kansas-city/

**CIVIL**  
Philo Engineering, Inc.  
170 N. Winchester  
Gardner, KS 66030  
913-393-1155

**STRUCTURAL**  
Wallace Design Collective  
1741 McGee Street  
Kansas City, MO 64108  
816-421-8282

**MECHANICAL**  
EMC Design  
1802 Westport Business Center Dr.  
St. Louis, MO 63114  
314-548-5218

**PLUMBING**  
Pro Design Contractors  
918 E. Warren St.  
Gardner, KS 66030  
913-393-6900

**ELECTRICAL**  
Pro Electric LLC  
910 Main Ave.  
Kansas City, MO 64105  
913-421-6611

**FIRE PROTECTION**  
Shenbaugh & Son  
7141 Quinlan Dr.  
Fort Wayne, IN 46825  
260-487-7777

**REFRIGERATION**  
Innovative  
333 Mount Tabor Road  
Lynchburg, VA 23802  
540-941-1996

**PROJECT**  
**PFG KANSAS CITY EXPANSION**  
290 SE Thompson Drive,  
Lees Summit, MO 64082

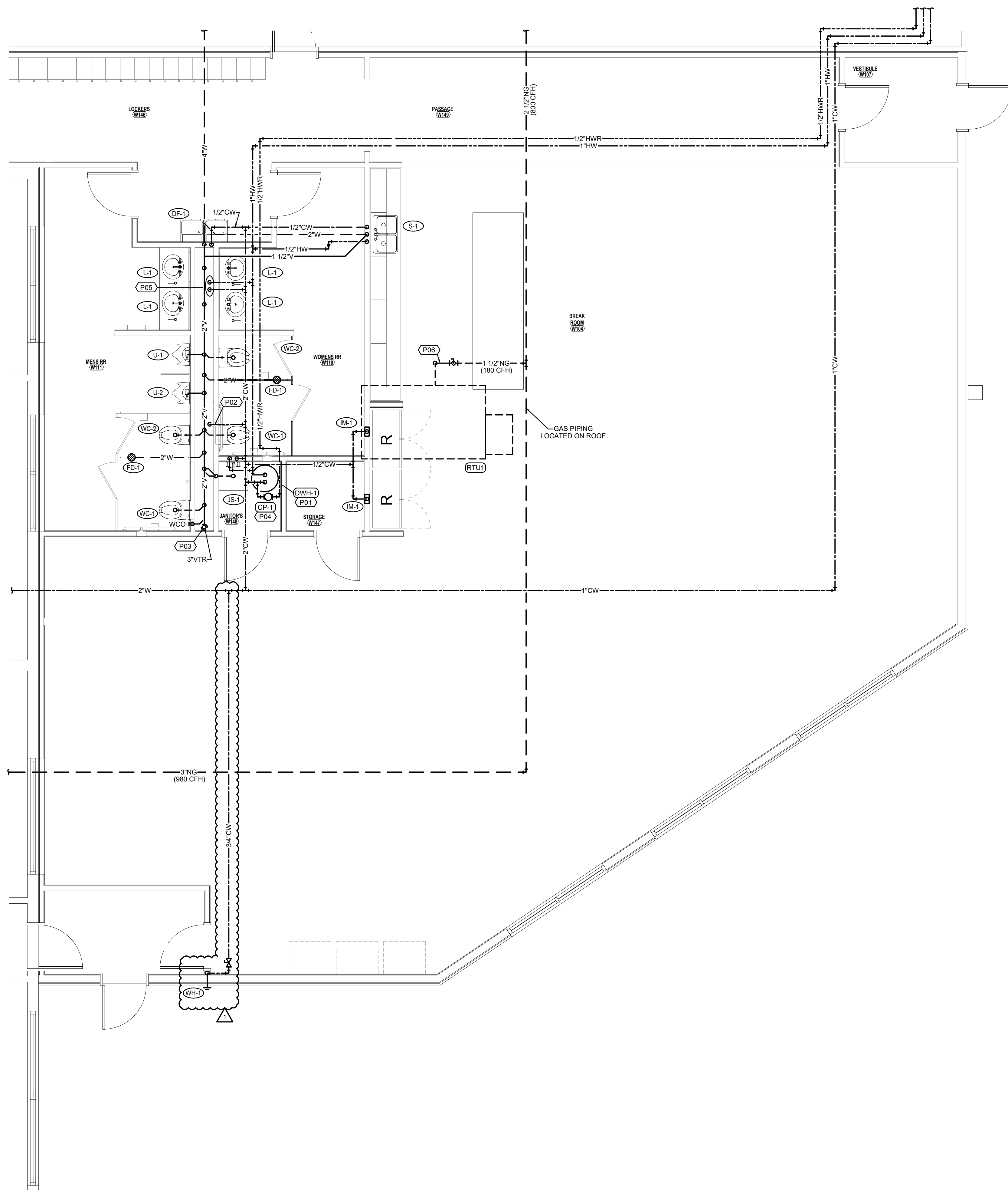


JOB NO: GA1128  
PA: APL  
ISSUE DATE: 07-26-2023

REVISIONS:	
REVISION	DATE
REVISION 1	09-14-2023

THIS DESIGN AND THESE DRAWINGS ARE THE PROPERTY OF GMA ARCHITECTS, INC. NO PART OF THIS DESIGN MAY BE REPRODUCED OR TRANSMITTED IN ANY FORM OR BY ANY MEANS WITHOUT PRIOR WRITTEN PERMISSION FROM GMA ARCHITECTS, INC.

SHEET NUMBER  
**P1.1**  
FLOOR PLAN - PLUMBING



**ENLARGED FLOOR PLAN-PLUMBING**  
SCALE: 1/4" = 1'-0"

## FLOOR PLAN NOTES

1. NEW ELECTRIC WATER HEATER MOUNTED ON 4" CONCRETE PAD. INSTALL PER MANUFACTURER'S REQUIREMENTS. ROUTE WASTE FROM T&P AND DRAIN FLOOR DRAIN AND INDIRECT WASTE. RE: DETAIL.
2. 2" COLD WATER DOWN IN WALL. 1" COLD WATER TO EACH WATER CLOSET, 3/4" COLD WATER TO EACH URINAL.
3. KEEP VENT THRU ROOF 10' MINIMUM FROM FRESH AIR INTAKES.
4. PROVIDE RECIRCULATING PUMP.
5. 3/4" COLD AND HOT WATER DOWN IN WALL. 1/2" COLD AND HOT WATER TO EACH LAVATORY.
6. CONNECT TO ROOFTOP EQUIPMENT WITH GAS COCK, DIRT LEG, AND UNION.



7330 Clayton Rd., Suite 300  
St. Louis, MO 63117  
P: 314.822.5191  
www.gma-architects.com



5015 NW Canal Street  
Suite 110  
Riverside, MO 64150  
P: 816.282.6324  
www.arconational.com/kansas-city/

### CIVIL

Phelix Engineering, Inc.  
1270 N. Winchester  
Olathe, KS 66061  
913.393.1155

### STRUCTURAL

Wallace Design Collective  
1741 McGee Street  
Kansas City, MO 64108  
816.421.8282

### MECHANICAL

EMC Design  
1802 Inverness Business Center Dr.  
St. Louis, MO 63114  
314.548.5218

### PLUMBING

Pro Design Contractors  
915 E. Warren St.  
Gardener, KS 66030  
913.338.6900

### ELECTRICAL

Pro Electric LLC  
910 Main Ave.  
Kansas City, KS 66105  
913.421.6811

### FIRE PROTECTION

Shankhaugh & Son  
7741 Opportunity Dr.  
Fort Wayne, IN 46825  
260.487.7777

### REFRIGERATION

Innovative  
333 Mount Tabor Road  
Lynchburg, VA 22803  
540.941.1998

**PROJECT**  
**PFG KANSAS CITY EXPANSION**  
**290 SE Thompson Drive,**  
**Lees Summit, MO 64082**



JOB NO: GA1128  
PA: APL  
ISSUE DATE: 07-26-2023

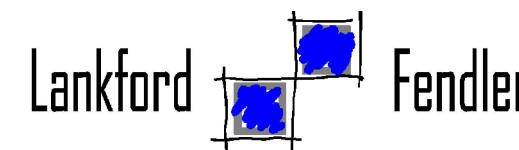
REVISIONS:	
REVISION	DATE
REVISION 1	09-14-2023

THIS DESIGN AND THESE DRAWINGS ARE THE PROPERTY OF GMA ARCHITECTS, INC. WITHOUT PRIOR WRITTEN PERMISSION FROM GMA ARCHITECTS, INC.

SHEET NUMBER  
**P1.2**  
ENLARGED FLOOR PLAN -  
PLUMBING

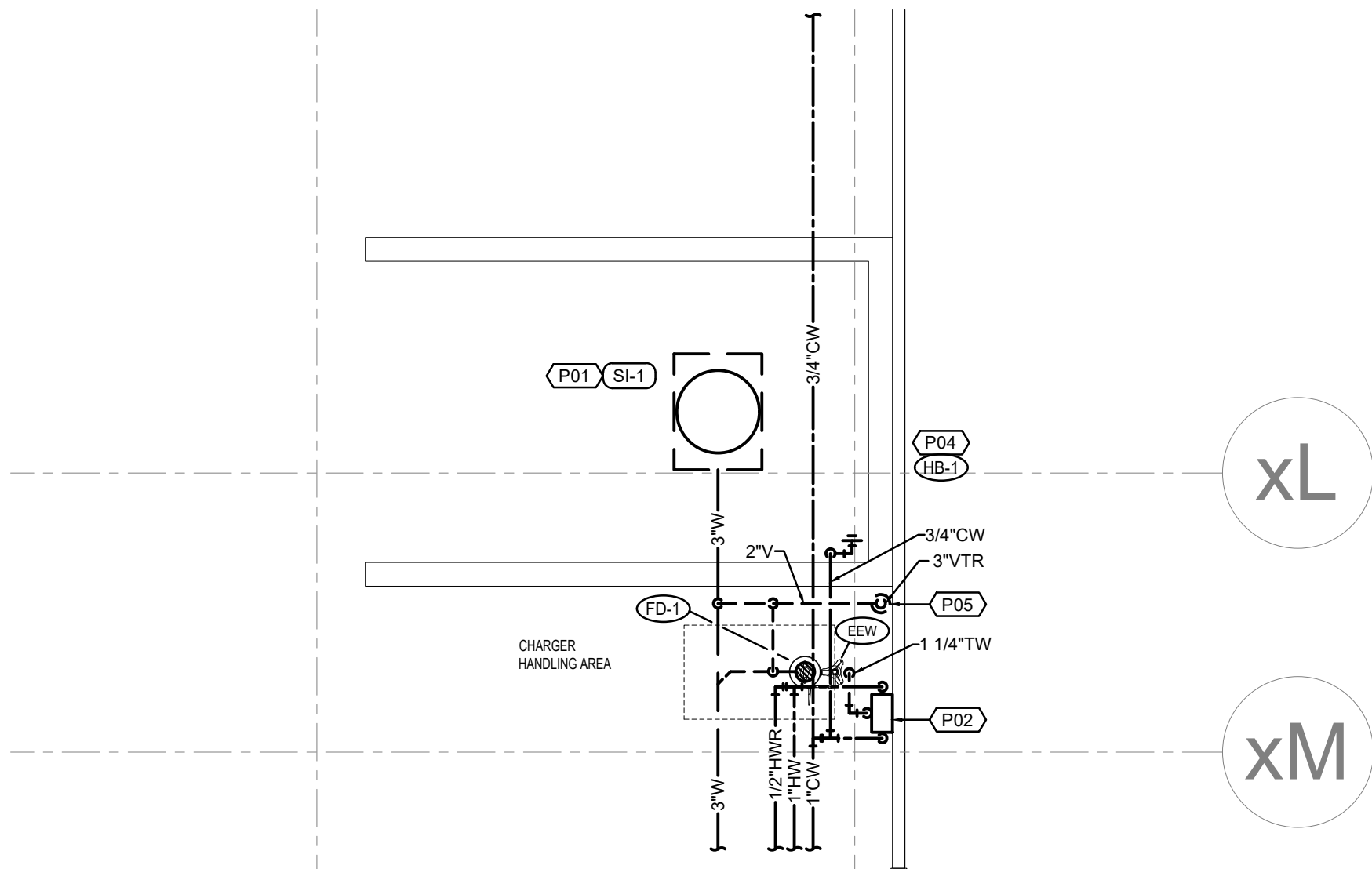


918 E. Warren St., Gardener, KS 66030  
Phone: 785.433.1561

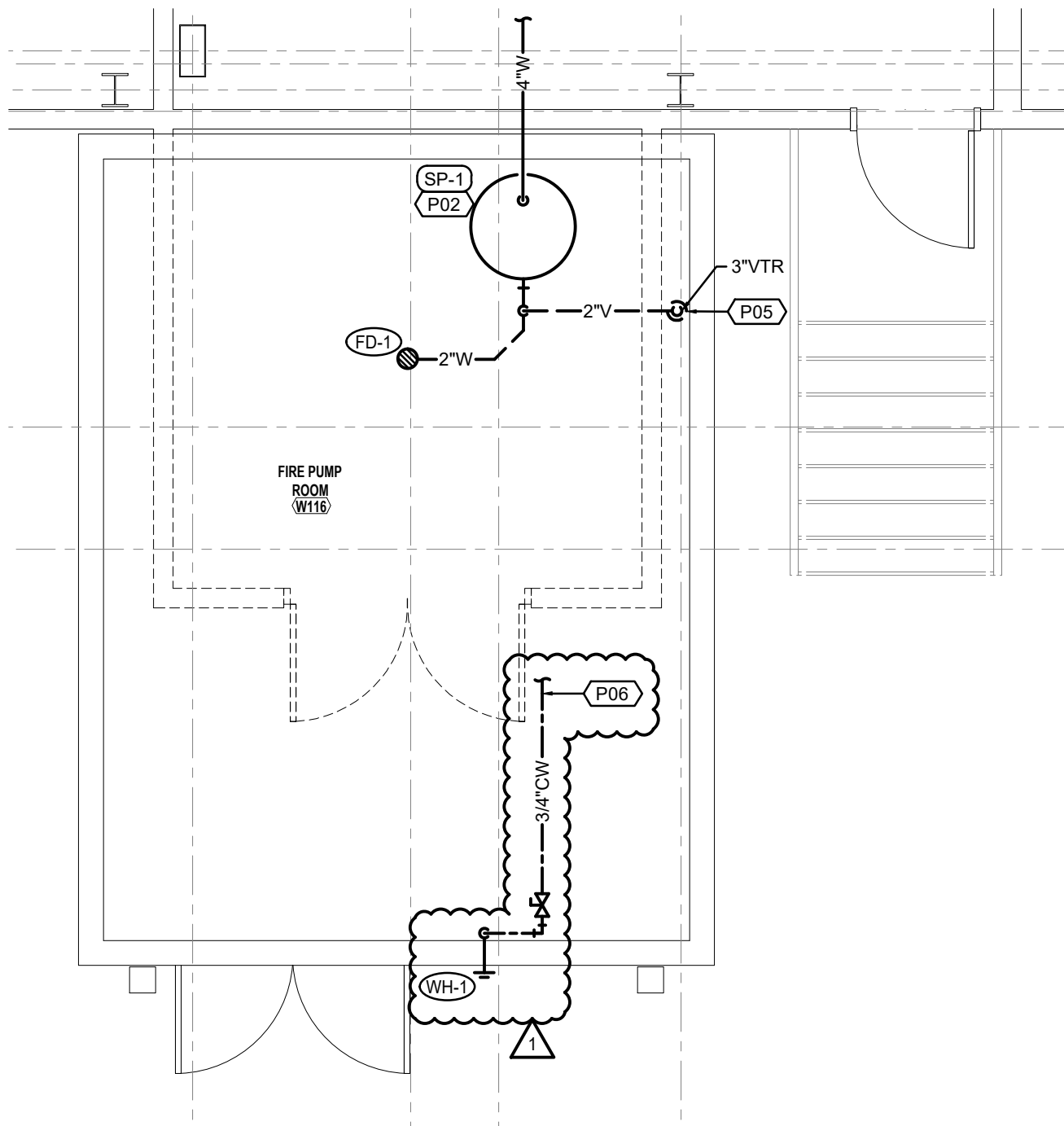


1780 Walnut Street Kansas City, Missouri 64108  
1915 Frederick Avenue, St. Joseph, Missouri 64501  
Phone: 816.221.1411 | Fax: 816.221.1429  
LANKFORD | FENDLER + ASSOCIATES CONSULTING ENGINEERS, INC.  
COPYRIGHT © 2023 Project No. 23.7218.13  
C-04 No. 2006001108





**ENLARGED  
FLOOR PLAN-PLUMBING**  
SCALE: 1/4"=1'-0"



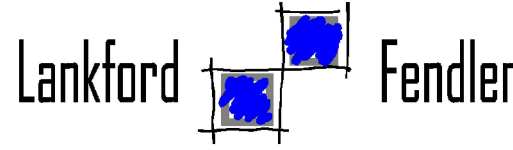
**ENLARGED  
FLOOR PLAN-PLUMBING**  
SCALE: 1/4"=1'-0"

**FLOOR PLAN NOTES**

1. PROVIDE STRIEM SAND/OIL INTERCEPTOR. RE: DETAIL.
2. PROVIDE MIXING VALVE FOR SHOWER. REFER TO PLUMBING FIXTURE SCHEDULE FOR ADDITIONAL INFORMATION.
3. PROVIDE SUMP PUMP WITH DRAIN. COORDINATE LOCATION.
4. PROVIDE 3/4" HOSE BIBB MOUNTED AT 36" A.F.F.
5. KEEP VENT THRU ROOF 10' MINIMUM FROM FRESH AIR INTAKES.
6. CONNECT TO EXISTING COLD WATER PIPING OF EQUAL OR GREATER SIZE THIS VICINITY. CONTRACTOR TO FIELD VERIFY EXACT SIZE, LOCATION AND ELEVATION OF EXISTING PIPING PRIOR TO CONSTRUCTION.



918 E Warren st., Gardener, KS 66030  
Phone: 785.433.1561



1780 Walnut Street Kansas City, Missouri 64108  
1915 Frederick Avenue, St. Joseph, Missouri 64501  
Phone: 816.221.1411 | Fax: 816.221.1429  
LANKFORD | FENDLER + ASSOCIATES, CONSULTING ENGINEERS, INC.  
COPYRIGHT © 2023 Project No. 23-7218.13  
C-04 No. 2006001168



7330 Clayton Rd., Suite 300  
St. Louis, MO 63117  
P: 314.822.5191  
www.gma-architects.com



5015 NW Canal Street  
Suite 110  
Riverside, MO 64150  
P: 816.282.6324  
www.arconational.com/kansas-city/

**CIVIL**

Philo Engineering, Inc.  
1270 N. Winchester  
Olathe, KS 66061  
913-393-1155

**STRUCTURAL**

Wallace Design Collective  
1741 McGee Street  
Kansas City, MO 64108  
816-421-8282

**MECHANICAL**

EMC Design  
1802 Vinehart Business Center Dr.  
St. Louis, MO 63114  
314-548-5218

**PLUMBING**

Pro Design Contractors  
918 E. Warren St.  
Gardener, KS 66030  
913-338-6900

**ELECTRICAL**

Pro Electric LLC  
910 Miami Ave.  
Kansas City, KS 66105  
913-421-6611

**FIRE PROTECTION**

Shanbaugh & Son  
7914 Quapaw Dr.  
Fort Wayne, IN 46825  
260-407-7777

**REFRIGERATION**

Innovative  
333 Mount Tabor Road  
Lynchburg, VA 23802  
540-941-1998

PROJECT  
**PFG KANSAS CITY EXPANSION**  
290 SE Thompson Drive,  
Lees Summit, MO 64082



JOB NO: GA1128  
PA: APL  
ISSUE DATE: 07-26-2023

REVISIONS:  
# DESCRIPTION DATE  
1 REVISION 1 09-14-2023

THIS DESIGN AND THESE DRAWINGS ARE THE PROPERTY OF GMA ARCHITECTS, INC. NO REUSE OR REPRODUCTION OF THIS DESIGN OR THESE DRAWINGS WITHOUT WRITTEN PERMISSION FROM GMA ARCHITECTS, INC.

SHEET NUMBER  
**P1.3**  
ENLARGED FLOOR PLANS -  
PLUMBING



PLUMBING

- 1.0 SCOPE:
- A. The work included under this contract consists of providing all labor, materials, tools, transportation, services, etc., necessary to complete the installation and to provide complete working systems of the Plumbing Systems, including hot and cold water, waste and vent, storm drainage, fixtures, equipment and other items described in these Specifications, as illustrated in the accompanying drawings, or as directed by the Architect/Engineer.
- B. Extend piping systems as indicated on contract documents or to point of connection as follows:
1. 5'-0" from exterior building wall lines
- 2.0 PIPING, FITTINGS AND VALVES:
- A. Domestic cold water underground --
1. Pipes, copper -- type "K", soft temper, wrought copper fittings, silver solder joints, 1/2" through 3".
- a. Under slab water piping shall be installed in sand fill and shall be jointless where possible or joints minimized. Required joints shall be made with lead free silver solder.
2. Water piping installed exterior to the building shall be a minimum of 48" below grade.
- B. Domestic water, interior, above ground -
1. Pipe CPVC Gold
- C. Sanitary sewer, vent, interior --
1. Pipe -- Cast iron hubless with no-hub mechanical joint, vents may be galvanized malleable iron.
2. Plastic piping shall not be allowed in return air plenums.
3. All gravity drainage shall be graded per code, with piping 3" and 4" not less than 1/4" per foot unless noted otherwise. Larger piping may be sloped at 1/8" per foot.
- D. Sanitary sewer, vent, below grade --
1. Pipe -- Cast iron hubless with no-hub mechanical joint; solid wall schedule 40 PVC, ABS with solvent cement joints.
2. All gravity drainage shall be graded per code, 2-1/2" or less shall be sloped 1/4" per foot, 3" to 6" piping shall be sloped at 1/8" per foot where possible and where required by local codes, 8" or larger shall be sloped minimum 1/16" per foot.
- E. Sanitary sewer, exterior --
1. Pipe -- Cast or ductile iron service weight, with compression gaskets; ABS, PVC with solvent cement joints.
- F. Natural Gas --
1. Pipe above ground:
- a. 2" and smaller - Schedule 40 black steel piping with threaded fittings.
- b. 2-1/2" and larger - Schedule 40 black steel piping with welded fittings.
- c. 2-1/2" thru 4" - Schedule 40 black steel pipe with Viega Megapress XL fittings.
2. Pipe below ground:
- a. Schedule 40 black steel with threaded or welded fittings.
- b. Natural gas piping installed exterior to the building shall be a minimum of 36" below grade.
3. Valves & Connectors:
- a. Shutoff Service -
- 1) 1/2" thru 1" - Nibco GB-1A, brass body, chrome plated brass ball, PTFE seats, screwed ends, 5 PSIG per CGA, lever handle.
- 2) 1/2" thru 2" - Nordstrom 142, iron lubricated tapered plug valve, 200 PSIG, threaded ends.
- b. Connections to each piece of equipment or appliances shall be made with gas cock, dirt leg and union. Appliance connections may be made with UL listed appliance connectors with union ends.
- c. Appliance shutoff valves shall be within 6" of the appliance and accessible, located in adjacent cabinet sections where required.
- d. Solenoid, 1/2" thru 2-1/2" - ASCO RED HAT II 8210, brass body stainless steel core, PTFE seats, normally closed, directed or reverse acting per application, UL listed for natural gas service with explosion proof diaphragm actuated operator, voltage as indicated or required.
- e. Flex Connectors, Metraflex GASCT 300 series stainless steel braided hose with carbon steel threaded ends.
4. All underground steel natural gas piping in direct contact with the earth shall be wrapped and tarred to provide maximum corrosion protection in a sand bed, with a minimum of 6" cover around pipe. Provide with cathodic protection.
5. Natural gas piping in return air plenum, where permitted shall be either installed in vented fabricated enclosure, sleeved and vented, or welded or one piece.
6. Paint exterior natural gas piping with corrosion inhibiting paint, color to be selected.

3.0 CLEANOUTS, TEST TEES, TRAPS AND TRAP SEALS:

- A. Provide cleanout at the base of each stack or riser, at ends of runs greater than 10', each 135 degree aggregate change of direction in horizontal piping, where indicated on the drawings or as required by code. Plugs, extra heavy cast brass, screwed. Serrated tops in unfinished areas, carpet markets in carpet floors, tile top in tile floors, stainless steel cover in finished walls. Cleanouts same size as pipe up to 4" diameter, 4" cleanouts for larger pipe unless otherwise noted. Cleanouts outside the building extend to grade and terminate with X-H, soil pipe cleanout set in 12" square 6" thick concrete pad.
- B. Provide test tees at base of risers and elsewhere as required by code.
- C. All traps shall be deep seal type with liquid seal not less than specified by code.
- D. Where trap primers are not specified provide all floor and hub drains with trap seal with EPDM diaphragm, Rectorseal SS series, Provent Proseal or acceptable equal.
- 4.0 FLASHINGS, SLEEVES, SEALS, ESCUTCHEONS AND UV PROTECTION:
- A. Flash all pipes and vents extending through roof. Flashing details shall be in accordance with roof manufacturer's requirements.
- B. Provide sleeves where piping penetrations are required thru partitions, floors, concrete slabs or foundation walls. Where penetrations are through fire rated assemblies, sleeves shall be in accordance with UL listing requirements. Sleeves shall be galvanized steel pipe, sheet steel or cast iron. Sleeves are not required for core drilled penetrations of existing concrete slabs above grade. Penetrations of below grade structures shall be water proofed with mechanical link seal system.
- C. Provide escutcheons at all penetrations of exposed walls and ceilings. Escutcheons shall be chrome plated metal in occupied areas, prime paint finish for unoccupied areas unless otherwise noted. Escutcheons for exterior or moist areas shall be brass.
- D. Plastic piping without UV inhibitors which is exposed to UV radiation from sunlight shall be protected by coating with a UV resistant paint.
- 5.0 UNIONS:
- A. Provide between each item of equipment and its service valve. Copper to ferrous pipe connections shall have isolation coupling or union.
- 6.0 CROSS- CONNECTIONS AND INTERCONNECTIONS:
- A. No plumbing device or piping shall be installed which will provide cross-connection or interconnection between a distributing supply or waste so as to make possible the back-siphonage of polluted water into the potable water supply system. Where the possibility of back-siphonage exists, water supply to the fixture shall be introduced through a suitable backflow preventer device suitable for the hazard protected. They may be an air gap, anti-siphon valve, atmospheric vacuum breaker, pressure vacuum breaker, double check, reduced pressure backflow preventer or as otherwise required by the authority having jurisdiction. Installed backflow preventers must be approved through the University of Southern California Foundation for Cross-Connection Control and Hydraulic Research.

7.0 INSULATION:

- A. Insulate all cold water piping above the ground, Owens Corning or acceptable equal.
- B. Cold water piping insulation: 1" fiber glass sectional pipe covering with universal vapor barrier jacket.
- C. Seal all joints on cold water insulation to maintain vapor barrier.
- D. Insulation shall run continuously thru hangers and supports without interruption.
- E. At Contractor's option, use Armstrong AP with 25/50 flame and smoke rating or acceptable equal with equivalent thermal performance. Provide insulation with integral UV resistant jacket or coat all weather exposed insulation with Armstrong VB ultraviolet shield finish.
- F. Pipe insulation shall conform to the International Energy Conservation Code.

8.0 PIPE SUPPORTS AND ROUTING:

- A. Hangers and Supports.
1. Piping shall be supported in accordance with industry standards including support methods, sizes and spacing. All supports and installation shall conform to MSS SP58 and 69 and Fed Spec WW-H-171E and A-A-1192A.
2. Pipe Slopes: Install hangers and supports to provide indicated or required pipe slopes to provide for drainage and venting
3. Deflection: Maximum pipe deflections and stresses as allowed by ANSI B31 are not exceeded.
4. Each piping system shall be independently supported with no piping bearing on another and installed such that no weight of piping is borne by the equipment.
5. Space hangers and supports within maximum piping span length indicated in MSS SP-58. Install building attachments at required locations for proper piping support.
6. Provide adjustable hangers, inserts, brackets, rolls, clamps, channels, rods, guides, anchors, flexible connectors, supplementary steel, etc., as required for proper support of all pipe lines. Trapeze may be used for support of multiple pipes. Provide accompanying attachments including bolts and nuts, sheetmetal screws or rivets suitable for application.
7. Provide copper plated, plastic coated or felt lined hangers where required to prevent electrolysis or abrasion on copper or plastic piping systems.
8. Upper attachments shall be manufactured items specific to the applicable structure. Include concrete inserts, wedge type drilled in inserts, steel beam and joist clamps, plates, rods, clips, straps and brackets as required by the application.
9. Hangers shall be designed to allow for expansion and contraction of pipe lines and shall be of adequate size to permit covering when required. Provide protective saddles and blocking where supporting insulated piping to prevent crushing insulation.
10. All hanger and support parts shall be galvanized steel for non-corrosive environments or stainless steel for corrosive or damp environments.

END OF SECTION

GENERAL PROVISIONS

1.0 DESCRIPTION:

- A. General provisions shall be governed by all applicable provisions of the Contract Document.
- B. The Contractor shall furnish, install and connect all materials, equipment, apparatuses, and incidentals required for a complete and working installation. For all systems shown and required, the Contractor shall supply all necessary labor, equipment, tools, insurance, and tax services, and shall assume full responsibility for all obligations associated with completion of work as provided by the Contract Documents.
- 2.0 STANDARDS, REGULATIONS AND CODES:
- A. Work shall comply with the edition of the applicable standards, regulations and codes currently in force of all Federal, State and local authorities having jurisdiction. Where quantities, sizes, or other requirements indicated on the drawings or herein specified are in excess of the standard or code requirements, the specifications and/or drawings shall govern. In the absence of other applicable local codes, acceptable to the Architect/Engineer, the International Set of Codes and the National Electrical Code shall apply to this work.
- B. The Contractor shall comply with rules and regulations of public utilities and municipal departments affected by connections of services. The Contractor shall pay all fees associated there with.
- C. The Contractor shall be licensed to perform associated work in the municipality in which the project is located.
- D. All products and types of construction shall meet or exceed the latest edition of applicable standards of manufacturer, testing, performance and installation.
- E. Where indicated or required, comply with all provisions of the ADA and/or the ABA Accessibility Guidelines.
- F. Where indicated or required, comply with all applicable provisions of energy and ventilation codes in force at the local jurisdiction.

3.0 LOCAL CONDITIONS:

- A. The Contractor shall carefully examine the local conditions and existing installations and shall become thoroughly familiar with all existing conditions which may affect associated work. The Contractor shall locate all existing utilities and protect them during the execution of the work.
- B. The Contractor shall examine all project drawings and specifications to become familiar with the type of construction, materials, and equipment, to be used for all work and how it will affect the installation of this contract.
- C. By the act of submitting a bid, the Contractor will be deemed to have made such examination, to have accepted such conditions, to have made allowance therefore, and included all costs in his proposal. Failure to determine existing conditions will not be considered a basis for the granting of additional compensation.

4.0 WORKMANSHIP:

- A. All work performed under this Contract shall provide a neat and "workmanlike" appearance when completed, to the satisfaction of the Owner's Representative. The complete installation shall function as designed and intended with respect to efficiency, capacity, and noise level, etc.

5.0 CUTTING AND PATCHING:

- A. All necessary cutting, drilling and patching shall be provided by this Contractor. Structural members shall not be disturbed without prior approval of the Owner's Representative. All areas disturbed by work performed under this Contract shall be neatly repaired and refinished to the condition of adjoining surfaces in a manner suitable to the Owner's Representative.

6.0 OPERATION DURING CONSTRUCTION:

- A. The Contractor is responsible for the installation and operation, service and maintenance of all new equipment during construction and prior to acceptance by the Owner of the completed project. Warranty periods shall not commence until final acceptance by the Owner or Owner Representative.
- B. The Contractor shall provide, at his own expense, all temporary utilities required to provide for and protect the work and as necessary to maintain an adequate work force.

7.0 SAFETY REGULATIONS:

- A. All work shall be performed in compliance with all applicable governing safety regulations, including OSHA regulations. Provide safety lights, guards and signs required.

8.0 HOUSEKEEPING:

- A. The Contractor shall be responsible for keeping stocks of material and equipment stored on the premises in a neat and orderly manner.
- B. The Contractor shall clean and maintain their specific portions of the work as specified in the General Conditions.
- C. The Contractor shall remove from the premises all waste material present as a result of his work.

9.0 GRAPHIC REPRESENTATION AND JOB CONDITIONS:

- A. The Drawings shall serve as working drawings for the general layout of the various items of equipment; are diagrammatic unless specifically dimensioned, and do not necessarily indicate every required item.
- B. Architectural and Structural drawings take precedence over all other drawings in the representation of the general construction work; any conflicts shall be resolved prior to commencing work. Failure to do so shall not be considered a basis for the granting of additional compensation.
- C. Arrange work in a neat, well organized manner. Coordinate work with other trades involved, prior to commencing work.

10.0 EXCAVATION AND BACKFILLING:

- A. The Contractor shall do all necessary excavating and backfilling for the installation of associated work. After the pipe has been installed, tested and approved, the trenches shall be backfilled to grade with compacted sand, gravel or AB-3 material or other material as required by local authorities. Compact to 85% density for unpaved areas, 95% density for paved area or under slabs.
- B. All water bearing piping shall be 48" minimum below grade, unless instructed otherwise.
- C. Roads, alleys, street, sidewalks and utilities damaged during this work shall be restored to the satisfaction of Owner's Representative and authorities having jurisdiction.
- D. Where subsidence is measurable or observable at excavation during general project warranty period, remove surface, add backfill material, compact, and replace surface treatment. Restore appearance of surface to match adjacent work.
- 11.0 SLEEVES AND ESCUTCHEONS:
- A. Penetrations thru walls and floors shall be as detailed.
- B. Where not otherwise shown, penetrations shall conform to the following:
1. Where pipes or conduits pass through walls, steel pipe or galvanized sheet iron sleeves shall be used.
2. Where pipes or conduits pass thru floors, beams, outside walls, or structural members, cast iron or steel pipe sleeves shall be used.
- C. Sleeves through interior non-rated walls, including walls indicated as sound partitions, shall be packed with fiberglass or mineral wool and caulked.
- D. Sleeves below grade or in exterior walls shall have lead and oakum or mechanical link seals, Thunder line or acceptable equivalent.
- E. Penetrations of fire rated construction shall be made with a UL listed fire penetration assembly suitable for the rating at each location. Where required, sleeves through fire rated structure shall be fire barrier caulked with putty stick or sheet by 3M, Hilti or acceptable equivalent.
- F. Provide steel (dry locations) or brass (damp locations) escutcheons to completely cover pipe penetration holes in floors, walls, or ceilings. Provide pipe escutcheons with nickel or chrome finish for occupied areas, prime paint finish for unoccupied areas, brass for exterior.

END OF SECTION

## PLUMBING FIXTURE SCHEDULE

MARK NO.	FIXTURE TYPE	MANUFACTURER	MODEL NO.	DESCRIPTION	MINIMUM CONNECTION SIZE			
					CW	HW	WASTE	VENT
WC-1	WATER CLOSET (ADA)	AMERICAN-STANDARD	2257.101 "ARWALL"	WALL MOUNTED FLUSH VALVE, WHITE VITREOUS CHINA, HIGH EFFICIENCY, DIRECT FED SIPHON JET ACTION, ELONGATED BOWL, WALL HUNG, 1-1/2" TOP SRUD SLOAN "ROYAL" 1111-1.28 (1.28 GPF) DAPHRAGM FLUSH VALVE WITH VACUUM BREAKER AND ANGLE STOP. ACCESSORIES: CHURCH 950SSCCT WHITE OPEN FRONT SEAT LESS COVER WITH SELF SUSTAINING CHECK HINGES, BOLTS AND CAPS, LOOSE KEY ANGLE STOP AND CHROME-PLATED RISER. NOTE: MOUNT FIXTURE RIM 17" ABOVE FINISHED FLOOR AND FLUSH VALVE TO WIDE SIDE OF FIXTURE	1"	-	4"	2"
WC-2	WATER CLOSET	AMERICAN-STANDARD	2257.101 "ARWALL"	WALL MOUNTED FLUSH VALVE, WHITE VITREOUS CHINA, HIGH EFFICIENCY, DIRECT FED SIPHON JET ACTION, ELONGATED BOWL, WALL HUNG, 1-1/2" TOP SRUD SLOAN "ROYAL" 1111-1.28 (1.28 GPF) DAPHRAGM FLUSH VALVE WITH VACUUM BREAKER AND ANGLE STOP. ACCESSORIES: CHURCH 950SSCCT WHITE OPEN FRONT SEAT LESS COVER WITH SELF SUSTAINING CHECK HINGES, BOLTS AND CAPS, LOOSE KEY ANGLE STOP AND CHROME-PLATED RISER. NOTE: MOUNT FIXTURE RIM 17" ABOVE FINISHED FLOOR AND FLUSH VALVE TO WIDE SIDE OF FIXTURE	1"	-	4"	2"
L-1	LAVATORY (ADA)	AMERICAN-STANDARD	"AQUALYN" 0476.028	COUNTERTOP, VITREOUS CHINA, 20" X 17" OVAL, FRONT OVERFLOW, SELF-RIMMING. ZURN MODEL 26915-XL DECK MOUNTED, 4" CENTERS, SINGLE TEMPERATURE CERAMIC DISC BATTERY OPERATED ELECTRONIC FAUCET WITH VANDAL RESISTANT NON-AERATING OUTLET (0.5 GPM) ACCESSORIES: PROVIDE LEONARD 170-LF LEAD FREE BRONZE THERMOSTATIC MIXING VALVE WITH 0.25 GPM MINIMUM FLOW RATE, INTEGRAL CHECK VALVES, DISCHARGE SET AT 105 F, MOUNTED DOWNSTREAM OF FIXTURE STOPS, WITH HOT AND COLD WATER PIPED TO VALVE, TEMPERED WATER TO LAVATORY. CHICAGO FAUCETS MODEL 337-XCP OFFSET GRID DRAIN, 1-1/4" X 1-1/2" 17 GA. SEMI-CAST BRASS P-TRAP WITH CLEANOUT AND CHROME-PLATED RISERS WITH LOOSE KEY ANGLE STOPS. PROVIDE WITH FULLY MOLDED FLEXIBLE VINYL INSULATION KIT TO COVER TRAP, SUPPLIES AND STOPS, TRUBRO E-Z LAV GUARD.	1/2"	1/2"	1-1/2"	1-1/2"
S-1	SINK (ADA)	ELKAY	LRAD2918	DOUBLE COMPARTMENT SELF-RIMMING SINK, 18 GA, TYPE 304 STAINLESS STEEL, 6-3/8" DEEP BOWL, DELTA MODEL 1591ST-DST TRINISC DECK MOUNTED FAUCET WITH CERAMIC OPERATING CARTRIDGE, TOUCH TECHNOLOGY, SINGLE LEVER HANDLE, 2 FUNCTION PULL DOWN 9-1/2" SWING SPOUT WITH MAGNETIC DOCKING, DUAL CHECK AND 1.5 GPM Aerator, 1" OR 3/4" HOLES MOUNTING WITH OPTIONAL DECK PLATE. ACCESSORIES: ELKAY LK-35 STRAINER WITH 1-1/2" TAILPIECE, 1-1/2" 17 GA. SEMI-CAST BRASS P-TRAP WITH CLEANOUT, CHROME-PLATED RISERS WITH LOOSE KEY ANGLE STOPS. GARBAGE DISPOSAL: IN-SINK-ERATOR E101 WITH CORD AND PLUG, 1/3 HP, 120V/11PH60HZ.	1/2"	1/2"	2"	1-1/2"
JS-1	JANITOR SINK	ZURN	Z1996-24	SIZE 24" X 24" X 10", TERRAZZO SERVICE SINK WITH CAST BRASS DRAIN, STAINLESS STEEL STRAINER, 3" DRAIN CONNECTION. ZURN MODEL 2843M1-RC WITH QUATURN OPERATING CARTRIDGE, VACUUM BREAKER SPOUT WITH PAUL HOOK AND WALL BRACE, 3/4" MALE HOSE THREAD OUTLET, 360 LEVER HANDLES, FLANGED ADJUSTABLE SUPPLY ARM AND INTEGRALL SUPPLY STOPS AND CHECK VALVES. ACCESSORIES: V-70 EXTRUDED VINYL BUMPER GUARDS ON EXPOSED SIDES, T-35 36" RUBBER HOSE WITH STAINLESS STEEL WALL BRACKET.	1/2"	1/2"	3"	2"
IM-1	ICE MAKER WALL BOX	SIOUX CHIEF	696-G1000 SERIES	RECESSED ICE MAKER WALL BOX WITH QUARTER TURN VALVE AND 1/2" INLET, ABS COVER.	1/2"	-	-	-
FD-1	FLOOR DRAIN	ZURN	ZN415-6B	GENERAL PURPOSE, DUCO CAST IRON BODY WITH FLASHING COLLAR, ADJUSTABLE STRAINER HEAD, OUTLET SIZE PER PLANS, NICKEL BRONZE STRAINER.	-	-	2"	1-1/2"
DF-1	DRINKING FOUNTAIN (ADA)	ELKAY	EZST8LC	ADA BARRIER-FREE BUILT-IN COOLER, 8.0 G.P.H. (50" F.W. WATER WITH 90" F.AIR TEMPERATURE), PUSH BAR ACTIVATION, STAINLESS STEEL, COOLER TOP, HEAVY GAUGE VINYL CLAD STEEL CABINET WITH GREY FINISH, 120V/11PH60HZ. ACCESSORIES: 17 GA. SEMI-CAST BRASS P-TRAP WITH CLEANOUT, CHROME-PLATED SUPPLY AND STOP, J.R. SMITH FLOOR MOUNTED TYPE SUPPORT WITH "PRO-SET" UPRIGHTS. NOTES: MOUNT WITH LOWER LEVEL SPOUT 35" ABOVE FINISH FLOOR.	1/2"	-	1-1/2"	1-1/2"
FFCO	FINISHED FLOOR CLEANOUT	WATTS	CO-204-RX-4	EPOXY COATED CAST IRON FLOOR CLEANOUT WITH 5" ROUND ADJUSTABLE GASKETED HEAVY DUTY DUCTILE IRON TOP.	N/A	N/A	4"	N/A
HB-1	HOSE BIBB (INTERIOR)	WOODFORD	26	CHROME PLATED BRASS, 3/4" INLET AND HOSE CONNECTION, MOUNTING FLANGE, INTEGRAL ASSE DOUBLE CHECK BACKFLOW PREVENTER, METAL WHEEL HANDLE.	3/4"	-	-	-
WH-1	WALL HYDRANT	WOODFORD	67	EXPOSED, FREEZELESS WALL HYDRANT, CHROME PLATED BRASS, 3/4" INLET AND HOSE CONNECTION, INTEGRAL ASSE DOUBLE CHECK BACKFLOW PREVENTER, LOOSE KEY, STEM LENGTH AS REQUIRED.	3/4"	-	-	-
EEW	EMERGENCY FREE STANDING SHOWER AND EYE WASH (ADA)	BRADLEY	S19314-AC	STAINLESS STEEL STAND WITH FLOOR MOUNTING FLANGE, 1-1/4" WATER INLET AND DRAIN, SHOWER WITH ABS SHOWER HEAD WITH 20 GPM FLOW CONTROL, 1" BALL VALVE AND FULL ROD, STAINLESS STEEL EYE WASH BOWL, BALL VALVE AND OPERATOR, WASH HEAD AND DUST COVER AND EMERGENCY SIGNAGE. ACCESSORIES: 1-1/4" WATER SUPPLY WITH WALL ESCUTCHEON, 1-1/4" X 1-1/2" 17 GA. SEMI-CAST BRASS P-TRAP WITH CLEAN-OUT, BRADLEY EPFX20 "NAVIGATOR" LEAD-FREE EMERGENCY THERMOSTATIC HOT AND COLD WATER 31 GPM MIXING VALVE.	1-1/4"	-	-	-

## WATER HEATER SCHEDULE (ELECTRIC)

MARK NO.	MANUFACTURER	MODEL NO.	TANK LINING	TANK CAPACITY (GAL)	RECOVERY (GPH @ 80 F)	INPUT (KW)	THERMAL EXPANSION TANK MODEL NO.	ELECTRICAL			NOTES
								VOLT	ø	HZ	
DWH-1	AO SMITH	DRE-120	GLASS	120	27	6	PLT-12	208	1	60	1,2,3
NOTES:											
1. PROVIDE WITH TEMPERATURE AND PRESSURE RELIEF VALVE AND DRAIN.											
2. PROVIDE WITH CONTROL THERMAL EXPANSION TANK, WATTS MODEL SCHEDULED WITH WATTS SOV SERVICE CHECK VALVE.											
3. FIELD VERIFY AND COORDINATE FINAL ELECTRICAL REQUIREMENTS WITH ELECTRICAL CONTRACTOR PRIOR TO INSTALLATION.											
*HEATING KW IS NET CAPACITY AT VOLTAGE AND PHASE INDICATED.											

## PLUMBING PUMP SCHEDULE

MARK NO.	MANUFACTURER	MODEL	USE	TYPE	FLOW (GPM)	HEAD (FT.)	RPM	ELECTRICAL				NOTES
								VOLT	ø	HZ	HP	
CP-1	BELL & GOSSETT	PL30B	RECIRC	INLINE	2	15	2650	120	1	60	1/12	1
SP-1	WEIL	1411	LIFT PUMP	SUBMERSIBLE	30	35	1750	120	1	60	1/2	2,3
NOTES:												
1. PROVIDE WITH AQUASTAT AND AUTOMATIC TIMER KIT.												
2. PROVIDE WITH WEIL 8341 HIGH LEVEL ALARM AND FLOAT SWITCH, CORD AND PLUG.												
3. PROVIDE WITH 24" I.D. X 36" DEEP FIBERGLASS BASIN AND 28" O.D. FIBERGLASS GRATE. COORDINATE LOCATION WITH OTHER DISCIPLINES.												

## SAND INTERCEPTOR SCHEDULE

MARK NO.	MANUFACTURER	MODEL NO.	MATERIAL	INSTALLATION	LIQUID CAPACITY (GAL)	SOLIDS CAPACITY (GAL)	INLET/OUTLET SIZE	COVER RATING (LBS)	MAX OPERATING TEMP (°F)	NOTES
SI-1	STREAM	CB-50-G	MOLDED POLYETHYLENE	BELOW GRADE	57	25	4"	16,000	140	1
NOTES:										
1. PROVIDE BCB-8 SEDIMENT BASKET, ADJUSTABLE DRAIN IN ADAPTER AND IF NECESSARY RISER EXTENSION.										

## PLUMBING GENERAL NOTES

PLUMBING CONTRACTOR IS RESPONSIBLE TO SEE THAT WORK MEETS AND IS IN ACCORDANCE WITH ALL REQUIREMENTS OF FEDERAL, STATE, AND LOCAL LAWS AND CODES AND/OR REQUIREMENTS, INCLUDING HEALTH CODES AND BUILDING OWNER.

CUTTING AND PATCHING OF FLOORS, WALLS, CEILING, ETC., REQUIRED IN STRICT ACCORDANCE WITH THE RULES AND REGULATIONS OF THE ARCHITECT'S AND/OR BUILDING OWNER REQUIREMENTS.

COORDINATE ALL WORK WITH OTHER TRADES PRIOR TO INSTALLATION TO AVOID ROUTING CONFLICTS.

ANY MATERIAL REMOVED THAT OWNER DOES NOT WISH TO RETAIN SHALL BE REMOVED FROM PROJECT SITE AND DISPOSED OF BY CONTRACTOR.

INSTALL ELASTOMERIC JOINT SEALER AROUND ALL PIPES PASSING THRU INTERIOR NON-RATED CONCRETE AND MASONRY WALLS, GYPSUM-BOARD PARTITIONS, AND CONCRETE FLOOR/ROOF SLABS, FOR FIRE RATED INTERIOR CONCRETE AND MASONRY WALLS, GYPSUM-BOARD PARTITIONS, AND CONCRETE FLOOR/ROOF SLABS SEAL ALL PIPES. INSTALL FIRESTOP MATERIALS IN ALL GAPS PRIOR TO SEALANT APPLICATION. INSTALL SEALER ACCORDING TO MANUFACTURER'S WRITTEN INSTRUCTIONS.

PLUMBING CONTRACTOR SHALL PROVIDE PRO-SET SYSTEMS 'TRAP GUARD' IN ALL FLOOR DRAIN TRAPS WITHIN PROJECT SCOPE OF WORK.

PLUMBING CONTRACTOR SHALL VERIFY WALL THICKNESS WITH ARCHITECT PRIOR TO ORDERING FREEZE PROOF WALL HYDRANTS.

## PLUMBING SYMBOLS

—	NEW PIPING
→	FLOW ARROW
---CW---	COLD WATER
---HW---	HOT WATER
---HWR---	HOT WATER RETURN
---IG---	IRRIGATION
---TW---	TEMPERED WATER
---V---	SANITARY VENT ABOVE GROUND/FLOOR
---W---	SANITARY WASTE BELOW GROUND/FLOOR
---NG---	NATURAL GAS
✂	SHUT OFF VALVE
■ OR	FLOOR DRAIN OR EQMT FLOOR DRAIN
⬇	PIPE DROP/PIPE RISE
⊕	BOTTOM OUTLET TEE
⊖	TOP OUTLET TEE
⊕ WH	WALL HYDRANT OR HOSE BIBB
CO	CLEAN OUT
☐ FFCO	FINISHED FLOOR CLEANOUT
⊕ VTR	SANITARY VENT THROUGH ROOF
○	PLUMBING FIXTURE DESIGNATION



7330 Clayton Rd., Suite 300  
St. Louis, MO 63117  
P: 314.822.5191  
www.gma-architects.com



5015 NW Canal Street  
Suite 110  
Riverside, MO 64150  
P: 816.282.6324  
www.arcnational.com/kansas-city/

PEIL

Philo Engineering, Inc.  
120 N. Winchester  
Olathe, KS 66061  
913-393-1155

STRUCTURAL

Wallace Design Collective  
1741 McGee Street  
Kansas City, MO 64108  
816-421-8282

MECHANICAL

ENG Design  
1001 Westport Business Center Dr.  
St. Louis, MO 63114  
314-548-5218

PLUMBING

Pro Design Contractors  
915 E. Warren St.  
Gardner, KS 66030  
913-308-6900

ELECTRICAL