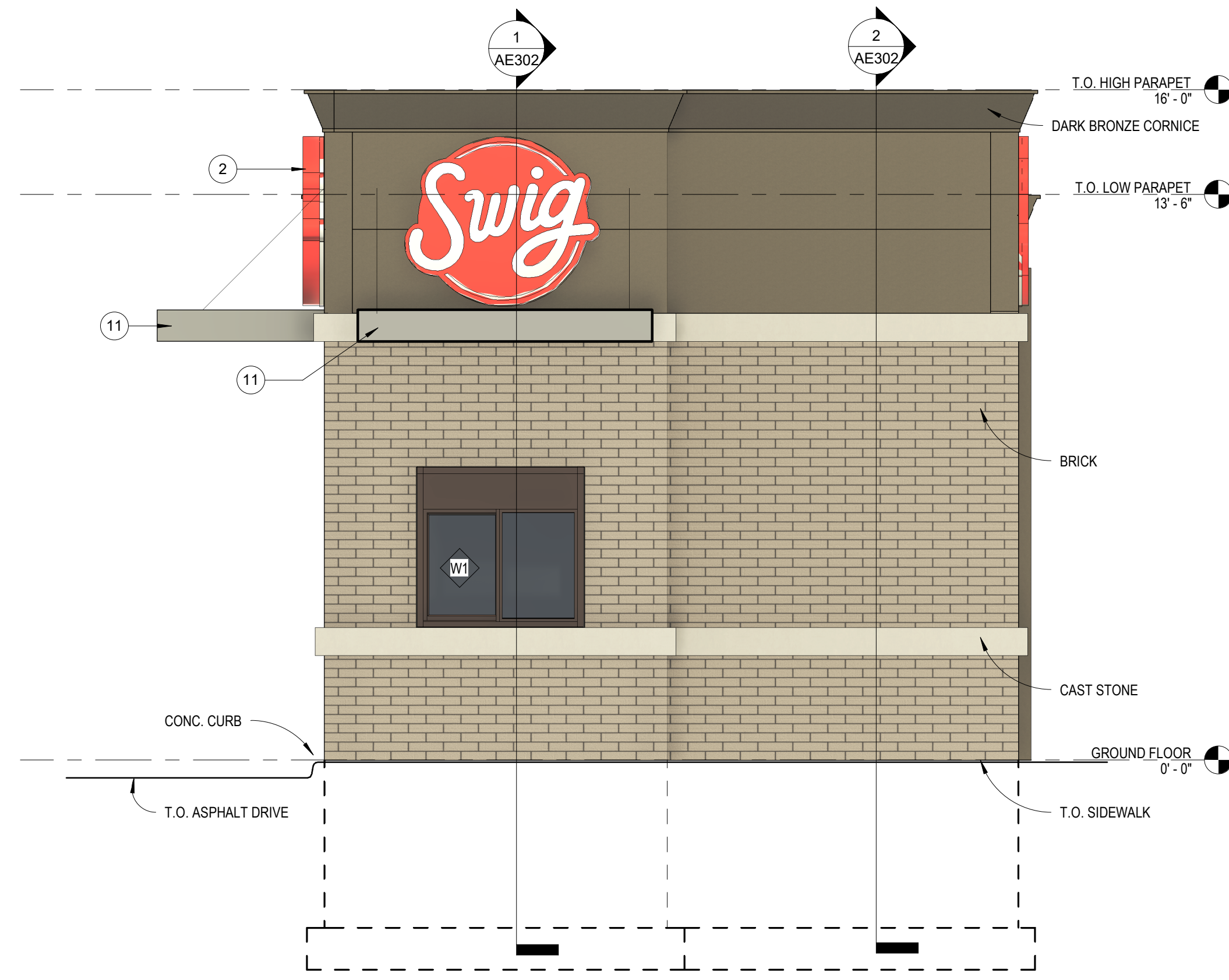


2 SOUTH ELEVATION
3/8" = 1'-0"



1 NORTH ELEVATION
3/8" = 1'-0"



SWIG - LEE'S SUMMIT
400 NW CHIPMAN RD, LEE'S SUMMIT, MO 64086



OLSON ARCHITECTURAL GROUP
1916 NW 79TH TERRACE
KANSAS CITY, MO 64151

REVISION SCHEDULE		
No.	Description	Date
1	CITY COMMENTS	9/14/23

SHEET NAME
EXTERIOR ELEVATIONS

PROJECT NUMBER 2102
DATE 06/16/2023
DRAWN BY PJS
CHECKED BY SDO
SCALE 3/8" = 1'-0"

AE202