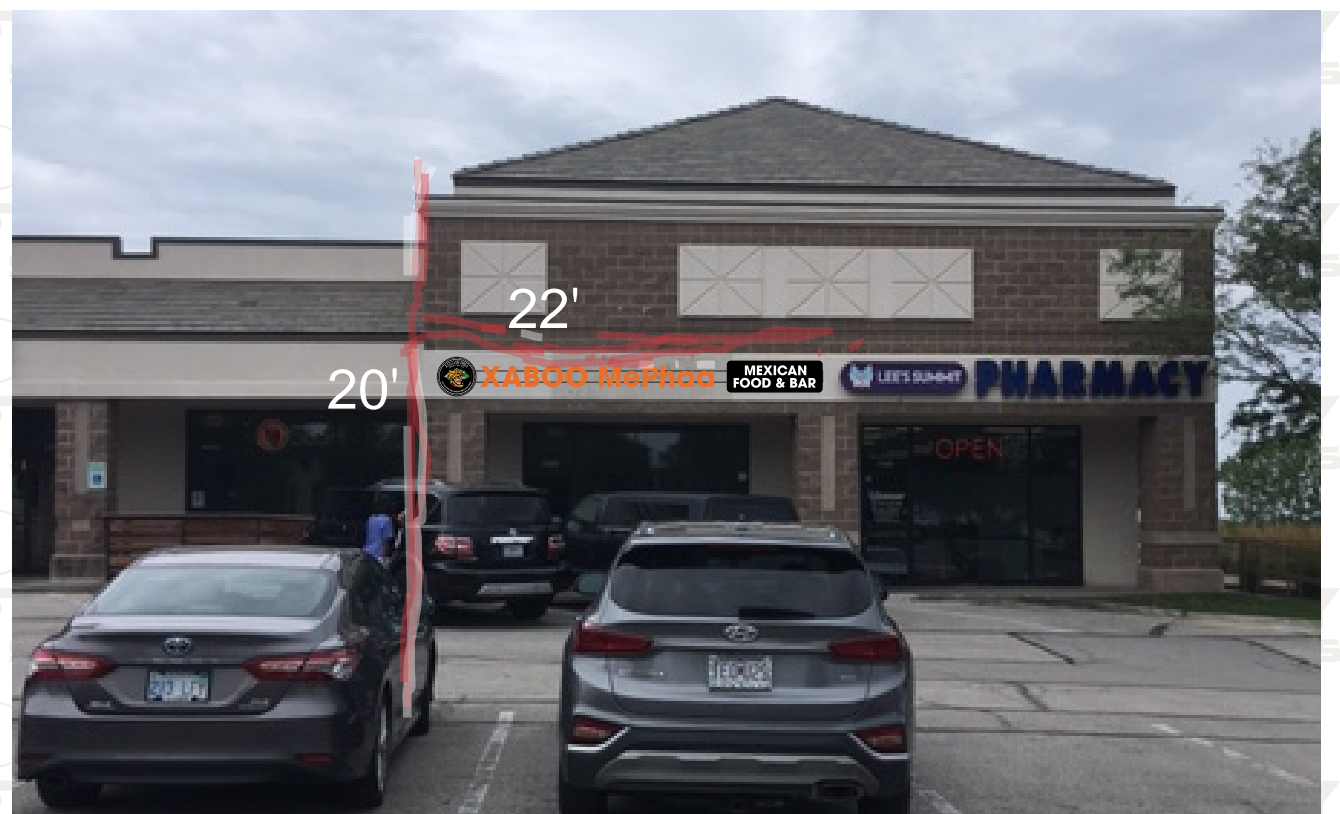
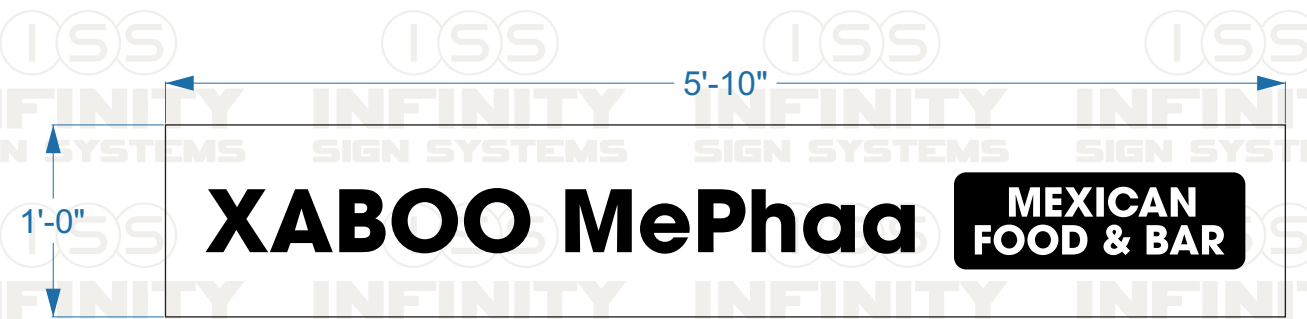


Manufacture and install (1) set internally illuminated channel letters on wireway painted to match building. Letters, logo and cabinet to have white plastic faces with digital print and/or vinyl overlays, black trimcap, black returns, and white LEDs.

Logo artwork is not very good quality



<b>Client</b>  Xaboo MePhaa Mexican	<b>Address</b> 1196 NE Douglas Lee's Summit, MO	<b>Account Rep.</b> E PICKETT <b>Designer</b> Brooke Braun <b>Date</b> 08-14-23	<b>Revisions</b> REV1 - REV2 - REV3 - REV4 - <b>Paint Colors</b> Pantone 357C <b>Vinyl Colors</b>  <b>Customer Approval</b> X	 4900 Lister Ave Kansas City, MO 64130 Phone: 816.252.3337 Fax: 816.252.3351
<b>Design #</b> ISS.104220	<b>Sheet #</b> Sheet 1 of 2	<b>Drawing Title</b> Channel Letters on Raceway	This drawing is the property of Infinity Sign Systems, Inc and all rights to its use for reproduction are reserved by Infinity Sign Systems.	



Manufacture and install  
(1) sets HP matte black vinyl for monument sign

Size above it the VO measurements



**Client**



Xaboo MePhaa Mexican

**Design #**

ISS.104220

**Address**

1196 NE Douglas  
Lee's Summit, MO

**Sheet #**

Sheet 2 of 2

**Account Rep.** E PICKETT

**Designer** Brooke Braun

**Date** 08-14-23

**Drawing Title**

Vinyl

**Revisions**

REV1 -

REV2 -

REV3 -

REV4 -

**Paint Colors**

**Vinyl Colors**

HP matte black

**Customer Approval**

X



**INFINITY SIGN SYSTEMS**

4900 Lister Ave  
Kansas City, MO 64130  
Phone: 816.252.3337  
Fax: 816.252.3351

This drawing is the property of Infinity Sign Systems, Inc and all rights to its use for reproduction are reserved by Infinity Sign Systems.