

**CURRAN**  
ARCHITECTURE

5719 LAWTON LOOP E. DR. #212  
INDIANAPOLIS, IN 46216  
O :: 317.288.0681  
F :: 317.288.0753



**SCANNELL**  
PROPERTIES

CERTIFICATION

THIS DRAWING AND THE IDEAS, DESIGNS AND CONCEPTS CONTAINED HEREIN ARE THE EXCLUSIVE INTELLECTUAL PROPERTY OF CURRAN ARCHITECTURE, AND ARE NOT TO BE USED OR REPRODUCED, WHOLE OR IN PART, WITHOUT THE WRITTEN CONSENT OF CURRAN ARCHITECTURE.  
© COPYRIGHT 2021, CURRAN ARCHITECTURE

**PROJECT INFORMATION**

LEE'S SUMMIT LOGISTICS BUILDING A LOT I  
NW CORNER OF NE TUDOR RD & MAIN ST  
LEE'S SUMMIT, MO 64086



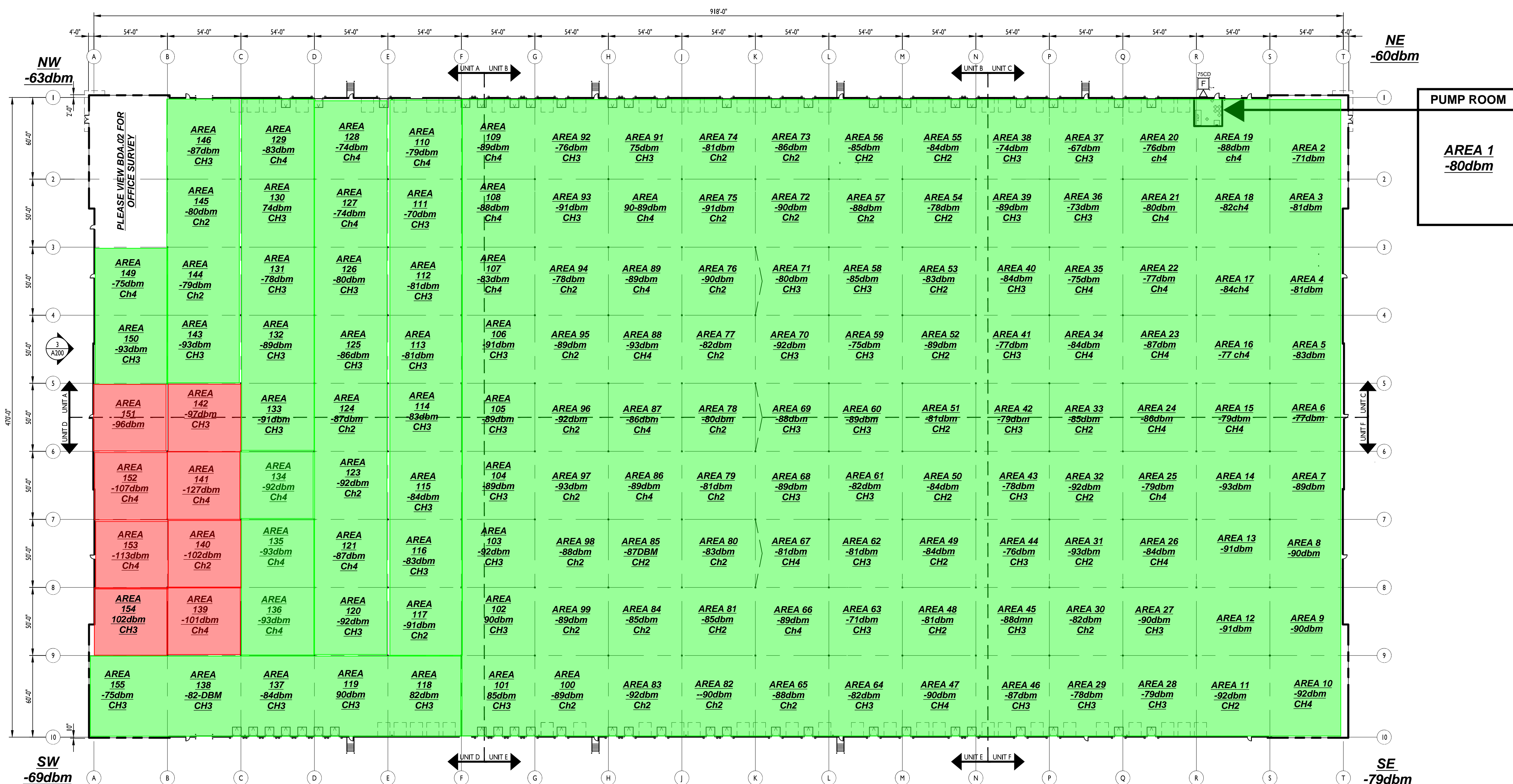
a.p.s Installations  
Tony: 816-918-9917  
Cody: 913-258-0861  
E: tanastasio@apsinstallations.com  
Spring Hill, Ks

**ISSUE DATES**

PERMIT SET 02.18.22

210300

**BDA.01**



PASS	FAIL
------	------

**BDA SURVEY** 1" = 40'

RECEIVER FREQUENCY CHART	
CHANNEL 1	855.012500
CHANNEL 2	855.362500
CHANNEL 3	855.837500
CHANNEL 4	858.037500
CHANNEL 5	858.862500
CHANNEL 6	859.487500
CHANNEL 7	859.862500
CHANNEL 8	815.787500
CHANNEL 9	N/A
CHANNEL 10	N/A

**NOTES:**

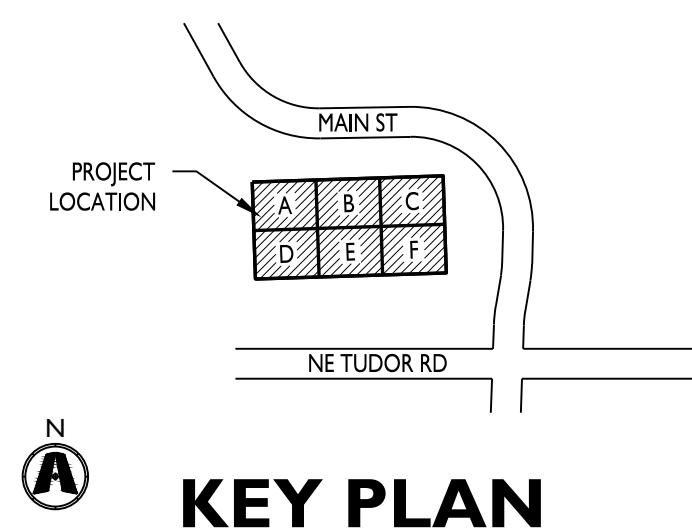
BDA SURVEY WAS DONE IN ACCORDANCE WITH NFPA 72, 1221 AND IFC 510.

95% OF TOTAL COMMON AREAS MUST PASS WITH A DBM LEVEL OF NO LESS THAN -95dbm PER NFPA 72,1221, AND IFC 510.

100% OF CRITICAL AREAS MUST PASS WITH NO LESS THAN 95%dbm PER NFPA 72,1221, AND IFC 510.

RECEIVER FREQUENCY TO BE PROVIDED BY THE AHJ.

BDA SURVEY MUST BE DONE BY FCC/GROL CERTIFIED TECHNICIAN.

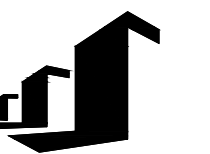






**CURRAN**  
ARCHITECTURE

5719 LAWTON LOOP E. DR. #212  
INDIANAPOLIS, IN 46216  
O :: 317.288.0681  
F :: 317.288.0753



**SCANNELL**  
PROPERTIES

CERTIFICATION

THIS DRAWING AND THE IDEAS, DESIGNS AND CONCEPTS CONTAINED HEREIN ARE THE EXCLUSIVE INTELLECTUAL PROPERTY OF CURRAN ARCHITECTURE, AND ARE NOT TO BE USED OR REPRODUCED, WHOLE OR IN PART, WITHOUT THE WRITTEN CONSENT OF CURRAN ARCHITECTURE.  
© COPYRIGHT 2021, CURRAN ARCHITECTURE

PROJECT INFORMATION

LEE'S SUMMIT LOGISTICS BUILDING A LOT I

NW CORNER OF NE TUDOR RD & MAIN ST  
LEE'S SUMMIT, MO 64086



a.p.s Installations  
Tony: 816-918-9917  
Cody: 913-258-0861  
E: tanastasio@apsinstallations.com  
Spring Hill, Ks

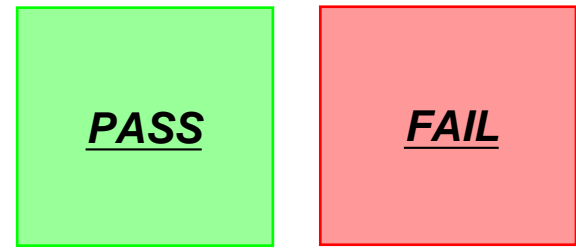
ISSUE DATES

PERMIT SET	02.18.22
REVISIONS	06.14.22
VE REVISIONS	12.20.22
TENANT REVISIONS	06.20.23

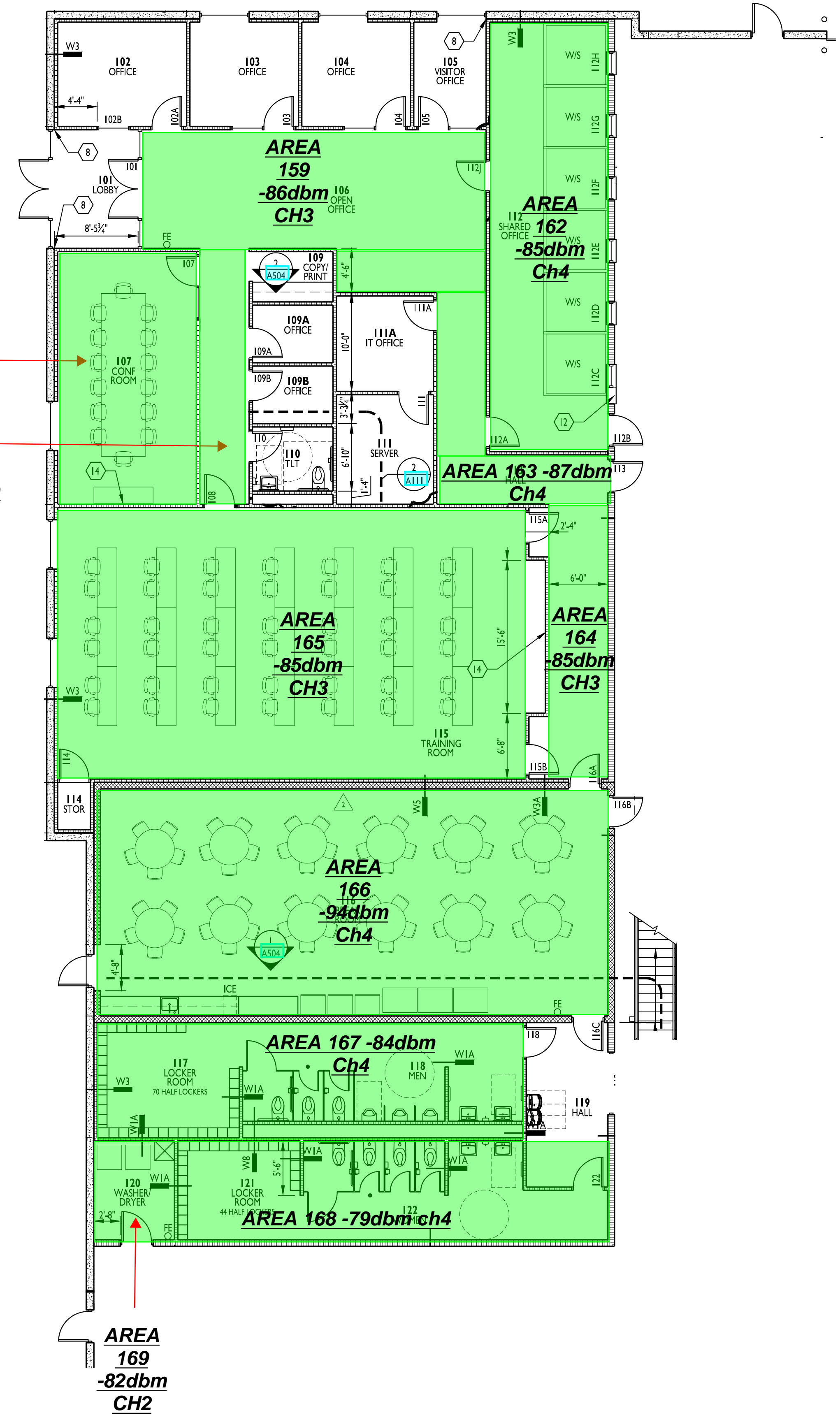
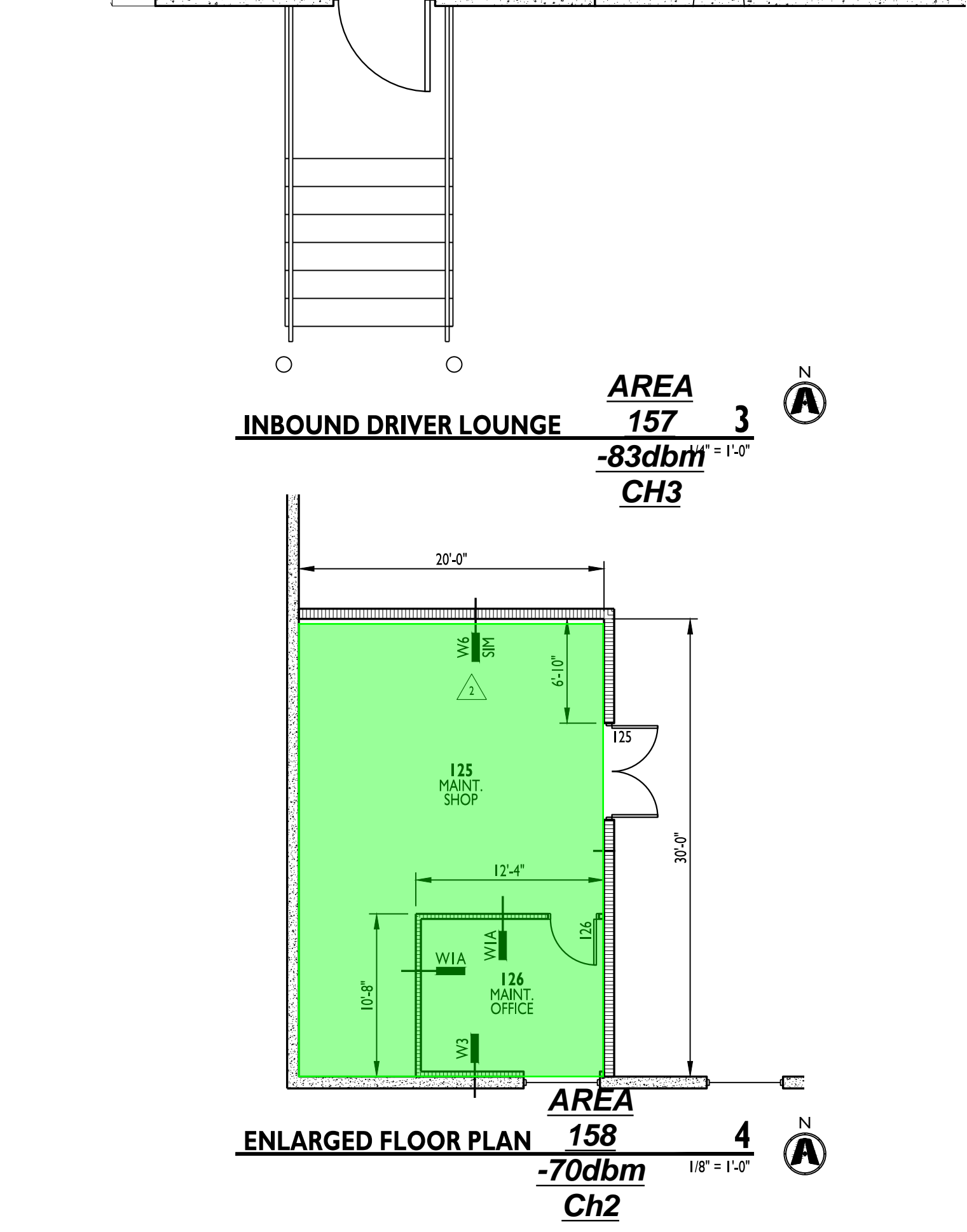
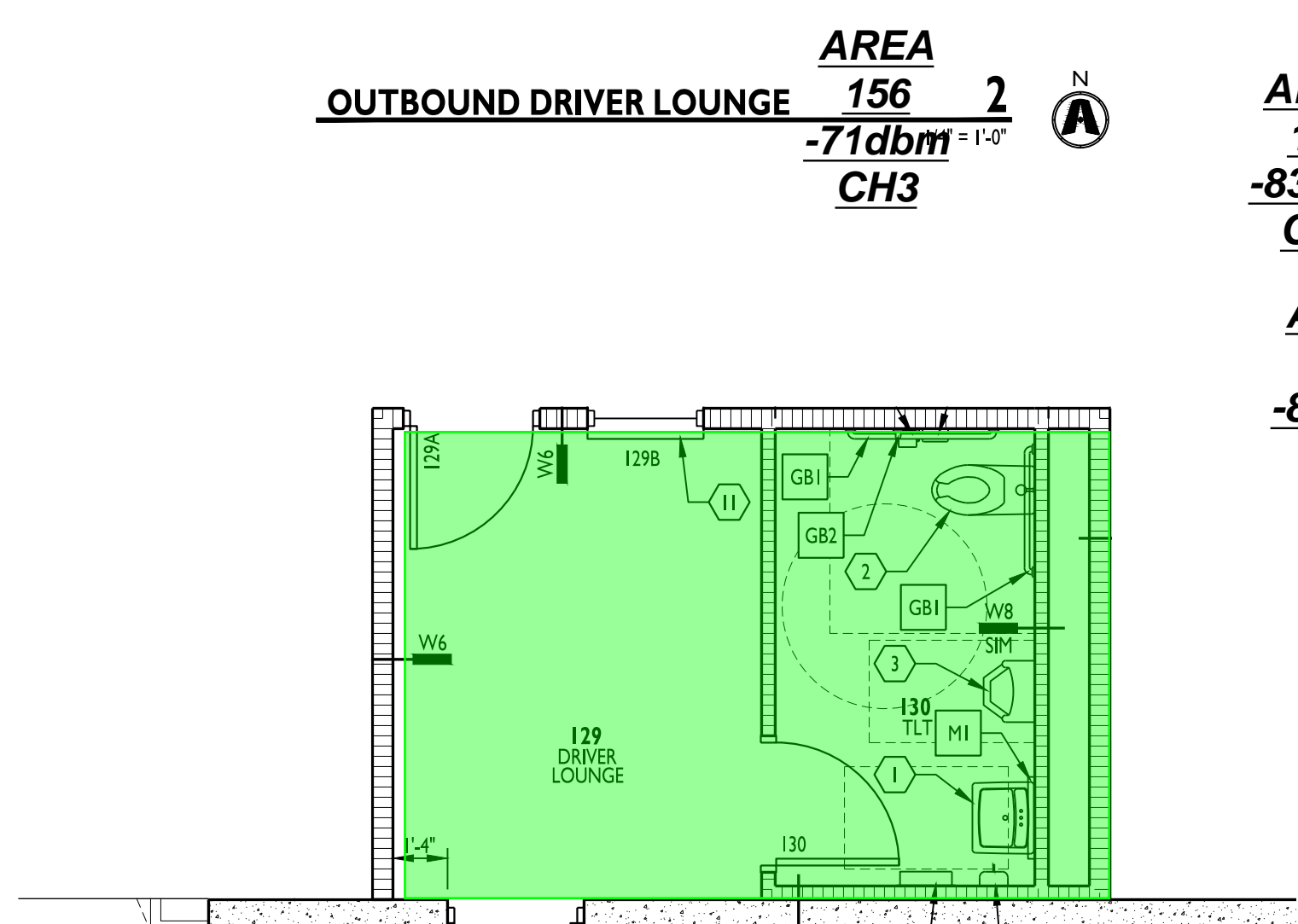
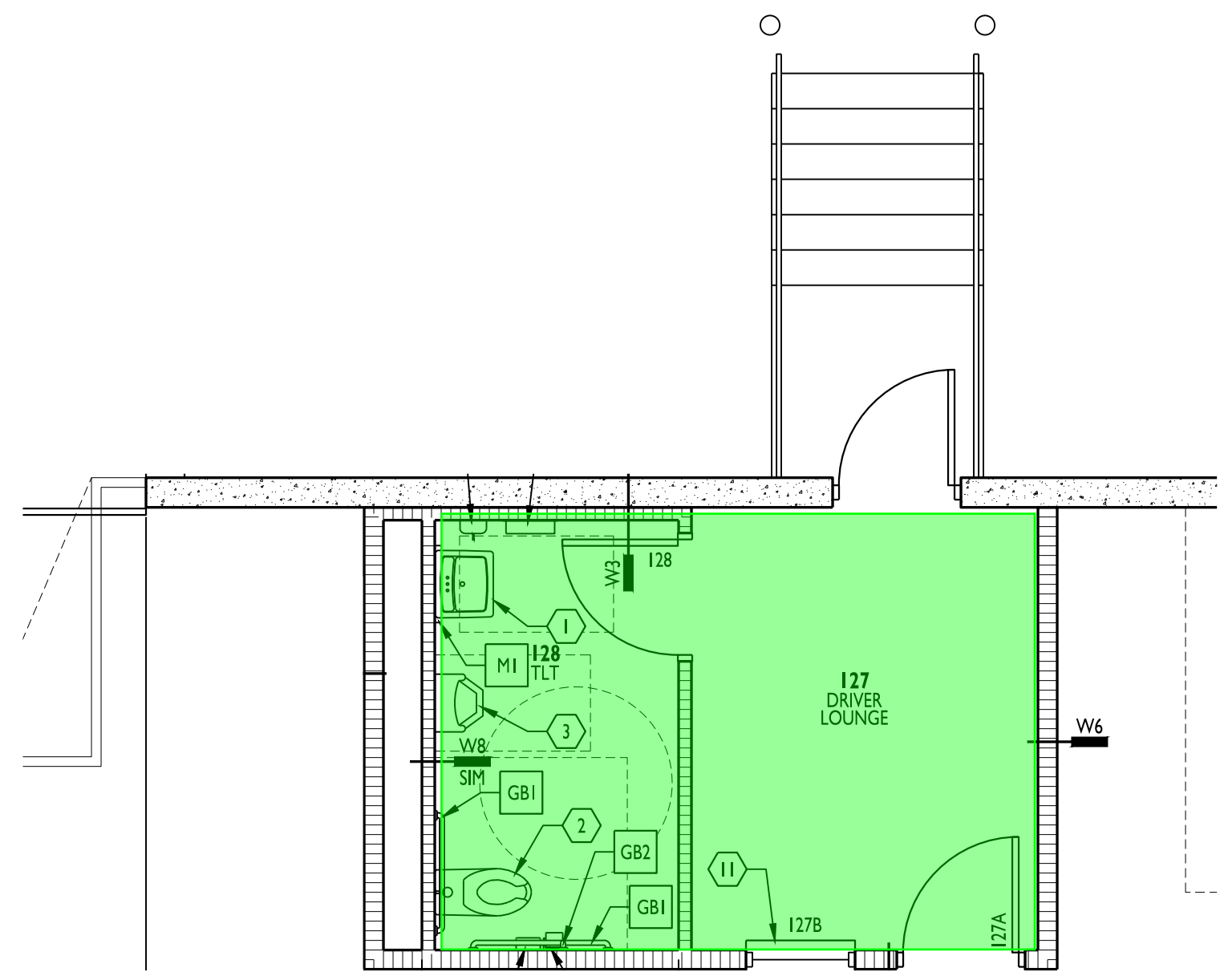
210300

ENLARGED FLOOR PLANS

**BDA.02**



RECEIVER FREQUENCY CHART	
CHANNEL 1	855.012500
CHANNEL 2	855.362500
CHANNEL 3	855.837500
CHANNEL 4	858.037500
CHANNEL 5	858.862500
CHANNEL 6	859.487500
CHANNEL 7	859.862500
CHANNEL 8	815.78750
CHANNEL 9	N/A
CHANNEL 10	N/A



1st FLOOR PLAN 1/8" = 1'-0"

<b>JOB NAME: LSCC 1/ZOETIS</b>	CHANNEL 1: 855.012500
<b>ADDRESS: 1100 NW MAIN ST</b>	CHANNEL 2: 855.362500
<b>STATE/CITY/ZIP: MISSOURI, LEE SUMMIT, 64086</b>	CHANNEL 3: 855.837500
<b>SURVEYOR NAME: CODY ANASTASIO</b>	CHANNEL 4: 855.037500
<b>DATE: 09-01-2023</b>	CHANNEL 5: 858.862500
<b>FCC/GROL SN: PG00067600</b>	CHANNEL 6: 859.487500
<b>FRN: 0030111165</b>	CHANNEL 7: 859.787500

AREA	CHANNEL	DOWNLINK -DBM	UPLINK DBM	REMARKS	PASS/FAIL
1	2	-80	N/A	PUMP ROOM	PASS
2	2	-81	N/A	WAREHOUSE	PASS
3	2	-81	N/A	WAREHOUSE	PASS
4	2	-81	N/A	WAREHOUSE	PASS
5	2	-83	N/A	WAREHOUSE	PASS
6	2	-77	N/A	WAREHOUSE	PASS
7	2	-89	N/A	WAREHOUSE	PASS
8	2	-90	N/A	WAREHOUSE	PASS
9	2	-90	N/A	WAREHOUSE	PASS
10	2	-92	N/A	WAREHOUSE	PASS
11	2	-92	N/A	WAREHOUSE	PASS
12	2	-91	N/A	WAREHOUSE	PASS
13	2	-91	N/A	WAREHOUSE	PASS
14	2	-93	N/A	WAREHOUSE	PASS
15	4	-79	N/A	WAREHOUSE	PASS
16	4	-77	N/A	WAREHOUSE	PASS
17	4	-84	N/A	WAREHOUSE	PASS
18	4	-82	N/A	WAREHOUSE	PASS
19	4	-88	N/A	WAREHOUSE	PASS
20	4	-76	N/A	WAREHOUSE	PASS
21	4	-80	N/A	WAREHOUSE	PASS
22	4	-77	N/A	WAREHOUSE	PASS
23	4	-87	N/A	WAREHOUSE	PASS
24	4	-86	N/A	WAREHOUSE	PASS
25	4	-79	N/A	WAREHOUSE	PASS
26	4	-84	N/A	WAREHOUSE	PASS

27	3	-90	N/A	WAREHOUSE	PASS
28	3	-79	N/A	WAREHOUSE	PASS
29	3	-78	N/A	WAREHOUSE	PASS
30	2	-82	N/A	WAREHOUSE	PASS
31	2	-93	N/A	WAREHOUSE	PASS
32	2	-92	N/A	WAREHOUSE	PASS
33	2	-85	N/A	WAREHOUSE	PASS
34	4	-84	N/A	WAREHOUSE	PASS
35	4	-75	N/A	WAREHOUSE	PASS
36	3	-73	N/A	WAREHOUSE	PASS
37	3	-67	N/A	WAREHOUSE	PASS
38	3	-74	N/A	WAREHOUSE	PASS
39	3	-89	N/A	WAREHOUSE	PASS
40	3	-84	N/A	WAREHOUSE	PASS
41	3	-77	N/A	WAREHOUSE	PASS
42	3	-79	N/A	WAREHOUSE	PASS
43	3	-78	N/A	WAREHOUSE	PASS
44	3	-76	N/A	WAREHOUSE	PASS
45	3	-88	N/A	WAREHOUSE	PASS
46	3	-87	N/A	WAREHOUSE	PASS
47	4	-90	N/A	WAREHOUSE	PASS
48	2	-81	N/A	WAREHOUSE	PASS
49	2	-84	N/A	WAREHOUSE	PASS
50	2	-84	N/A	WAREHOUSE	PASS
51	2	-81	N/A	WAREHOUSE	PASS
52	2	-89	N/A	WAREHOUSE	PASS
53	2	-83	N/A	WAREHOUSE	PASS
54	2	-78	N/A	WAREHOUSE	PASS
55	2	-84	N/A	WAREHOUSE	PASS
56	2	-85	N/A	WAREHOUSE	PASS
57	2	-88	N/A	WAREHOUSE	PASS
58	3	-85	N/A	WAREHOUSE	PASS
59	3	-75	N/A	WAREHOUSE	PASS
60	3	-89	N/A	WAREHOUSE	PASS

61	3	-82	N/A	WAREHOUSE	PASS
62	3	-81	N/A	WAREHOUSE	PASS
63	3	-71	N/A	WAREHOUSE	PASS
64	3	-82	N/A	WAREHOUSE	PASS
65	2	-88	N/A	WAREHOUSE	PASS
66	4	-89	N/A	WAREHOUSE	PASS
67	4	-81	N/A	WAREHOUSE	PASS
68	3	-89	N/A	WAREHOUSE	PASS
69	3	-88	N/A	WAREHOUSE	PASS
70	3	-92	N/A	WAREHOUSE	PASS
71	3	-80	N/A	WAREHOUSE	PASS
72	2	-90	N/A	WAREHOUSE	PASS
73	2	-86	N/A	WAREHOUSE	PASS
74	2	-81	N/A	WAREHOUSE	PASS
75	2	-91	N/A	WAREHOUSE	PASS
76	2	-90	NN	WAREHOUSE	PASS
77	2	-82	N/A	WAREHOUSE	PASS
78	2	-80	N/A	WAREHOUSE	PASS
79	2	-81	N/A	WAREHOUSE	PASS
80	2	-83	N/A	WAREHOUSE	PASS
81	2	-85	N/A	WAREHOUSE	PASS
82	2	-90	N/A	WAREHOUSE	PASS
83	2	-92	N/A	WAREHOUSE	PASS
84	2	-85	N/A	WAREHOUSE	PASS
85	2	-87	N/A	WAREHOUSE	PASS
86	4	-89	N/A	WAREHOUSE	PASS
87	4	-86	N/A	WAREHOUSE	PASS
88	4	-93	N/A	WAREHOUSE	PASS
89	4	-89	N/A	WAREHOUSE	PASS
90	4	-90	N/A	WAREHOUSE	PASS
91	3	-75	N/A	WAREHOUSE	PASS
92	3	-76	N/A	WAREHOUSE	PASS
93	3	-91	N/A	WAREHOUSE	PASS
94	2	-78	N/A	WAREHOUSE	PASS

95	2	-89	N/A	WAREHOUSE	PASS
96	2	-92	N/A	WAREHOUSE	PASS
97	2	-93	N/A	WAREHOUSE	PASS
98	2	-88	N/A	WAREHOUSE	PASS
99	2	-89	N/A	WAREHOUSE	PASS
100	2	-89	N/A	WAREHOUSE	PASS
101	3	-85	N/A	WAREHOUSE	PASS
102	3	-90	N/A	WAREHOUSE	PASS
103	3	-92	N/A	WAREHOUSE	PASS
104	3	-89	N/A	WAREHOUSE	PASS
105	3	-89	N/A	WAREHOUSE	PASS
106	3	-91	N/A	WAREHOUSE	PASS
107	4	-83	N/A	WAREHOUSE	PASS
108	4	-88	N/A	WAREHOUSE	PASS
109	4	-89	N/A	WAREHOUSE	PASS
110	4	-79	N/A	WAREHOUSE	PASS
111	3	-70	N/A	WAREHOUSE	PASS
112	3	-81	N/A	WAREHOUSE	PASS
113	3	-81	N/A	WAREHOUSE	PASS
114	3	-83	N/A	WAREHOUSE	PASS
115	3	-84	N/A	WAREHOUSE	PASS
116	3	-86	N/A	WAREHOUSE	PASS
117	2	-91	N/A	WAREHOUSE	PASS
118	3	-82	N/A	WAREHOUSE	PASS
119	3	-90	N/A	WAREHOUSE	PASS
120	3	-92	N/A	WAREHOUSE	PASS
121	4	-87	N/A	WAREHOUSE	PASS
122	N/A	N/A	N/A	N/A	N/A
123	2	-92	N/A	WAREHOUSE	PASS
124	2	-87	N/A	WAREHOUSE	PASS
125	3	-86	N/A	WAREHOUSE	PASS
126	3	-80	N/A	WAREHOUSE	PASS
127	4	-74	N/A	WAREHOUSE	PASS
128	4	-74	N/A	WAREHOUSE	PASS

129	4	-83	N/A	WAREHOUSE	PASS
130	3	-74	N/A	WAREHOUSE	PASS
131	3	-78	N/A	WAREHOUSE	PASS
132	3	-89	N/A	WAREHOUSE	PASS
133	3	-91	N/A	WAREHOUSE	PASS
134	4	-92	N/A	WAREHOUSE	PASS
135	4	-93	N/A	WAREHOUSE	PASS
136	4	-93	N/A	WAREHOUSE	PASS
137	3	-84	N/A	WAREHOUSE	PASS
138	3	-82	N/A	WAREHOUSE	PASS
139	4	-101	N/A	FREEZER	FAIL
140	2	-102	N/A	FREEZER	FAIL
141	4	-127	N/A	FREEZER	FAIL
142	3	-97	N/A	FREEZER	FAIL
143	3	-93	N/A	WAREHOUSE	PASS
144	2	-79	N/A	WAREHOUSE	PASS
145	2	-80	N/A	WAREHOUSE	PASS
146	3	-87	N/A	WAREHOUSE	PASS
147	N/A	N/A	N/A	N/A	N/A
148	N/A	N/A	N/A	N/A	N/A
149	4	-75	N/A	WAREHOUSE	PASS
150	3	-93	N/A	WAREHOUSE	PASS
151	3	-96	N/A	FREEZER	FAIL
152	4	-107	N/A	FREEZER	FAIL
153	4	-113	N/A	FREEZER	FAIL
154	3	-102	N/A	FREEZER	FAIL
155	3	-75	N/A	WAREHOUSE	PASS
156	3	-71	N/A	OUTBOUND OFFICE	PASS
157	3	-83	N/A	INBOUND OFFICE	PASS
158	2	-70	N/A	MAINT SHOP	PASS
159	3	-86	N/A	MAIN OFFICE	PASS
160	3	-83	N/A	MAIN OFFICE	PASS
161	2	-85	N/A	MAIN OFFICE	PASS
162	4	-85	N/A	MAIN OFFICE	PASS

163	4	-87	N/A	MAIN OFFICE	PASS
164	3	-85	N/A	MAIN OFFICE	PASS
165	3	-85	N/A	MAIN OFFICE	PASS
166	4	-94	N/A	MAIN OFFICE	PASS
167	4	-84	N/A	MAIN OFFICE	PASS
168	4	-79	N/A	MAIN OFFICE	PASS
169	2	82	N/A	MAIN OFFICE	PASS
170					