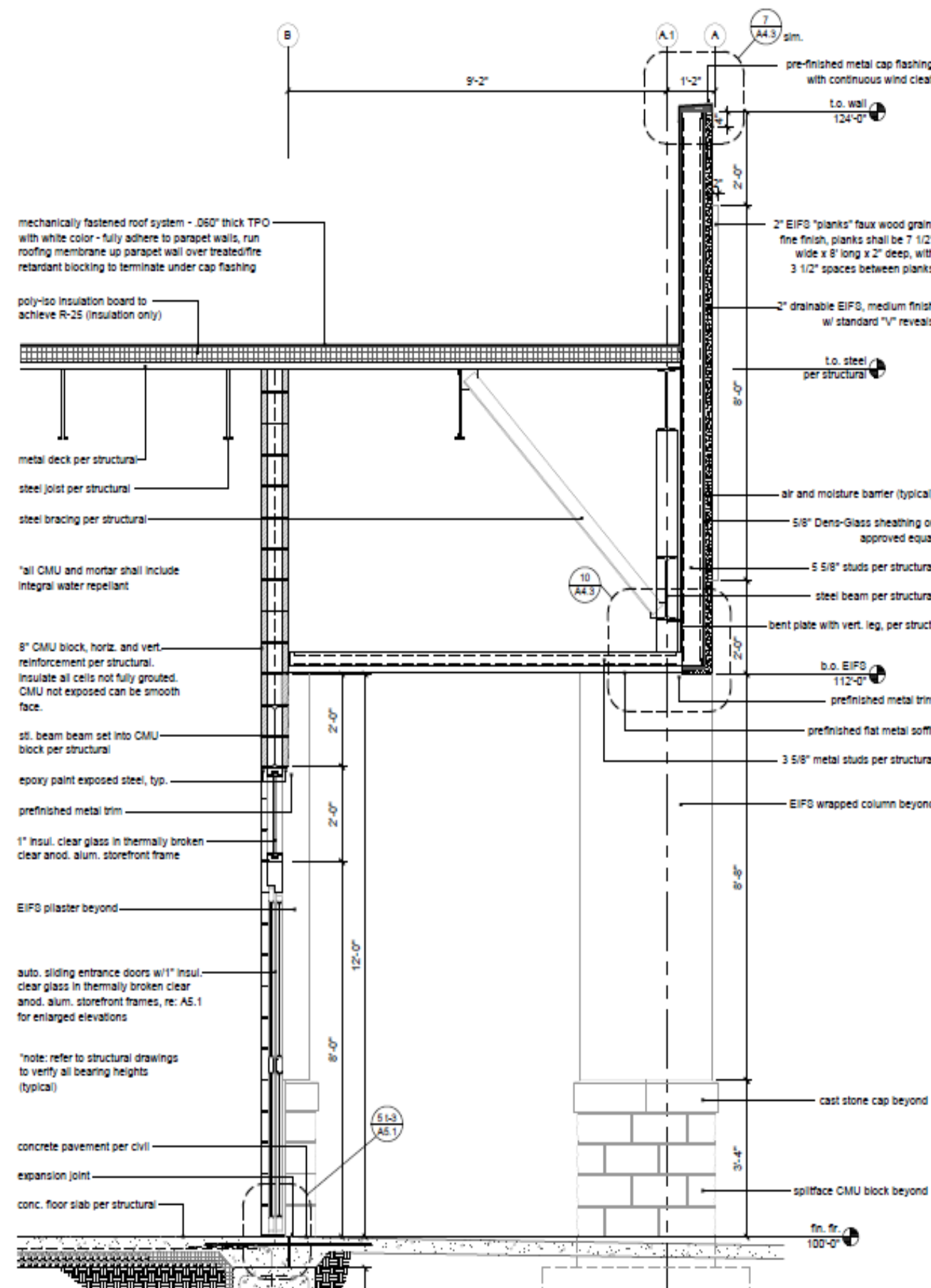


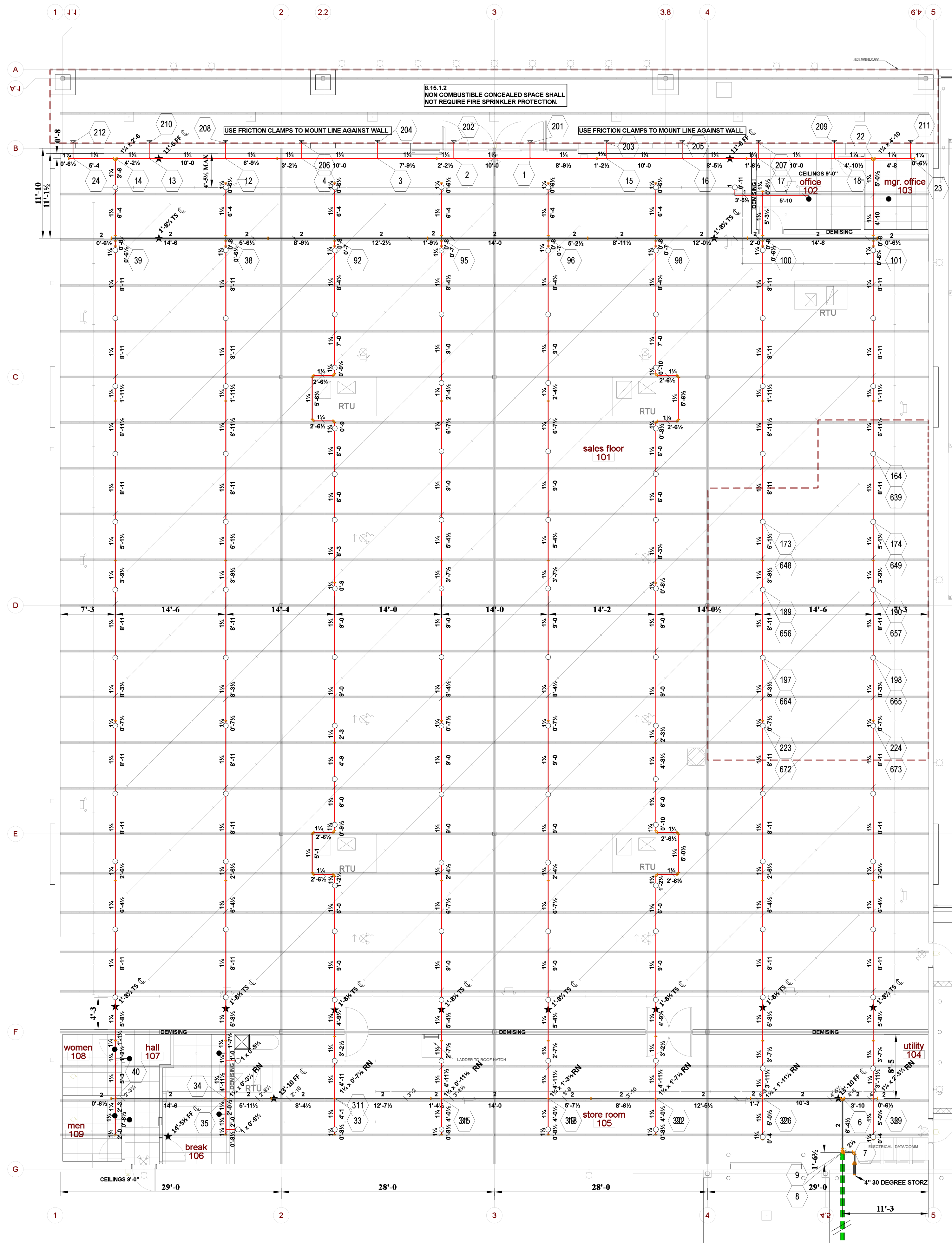
Section View 1-5



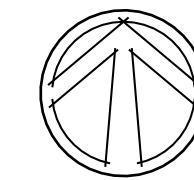
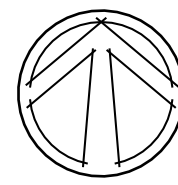
Section View A-B

Hydraulic Information	
Remote Area Sales Floor	
OCCUPANCY CLASSIFICATION	Ordinary Group I
DENSITY (gpm/ft²)	0.20 for 1500.00 ft² (Actual 1164.36 ft²)
QUICK RESPONSE REDUCTION	18"-8 Ceiling (27.0%) 1095.00 ft²
TOTAL HOSE STREAMS	250.00
TOTAL HEADS FLOWING	9
K-FACTOR	5.6
TOTAL WATER REQUIRED	488.89
TOTAL PRESSURE REQUIRED	66.67
BASE OF RISER (gpm)	238.89
BASE OF RISER (psi)	60.021
SAFETY MARGIN (psi)	+16.152 (19.5%)

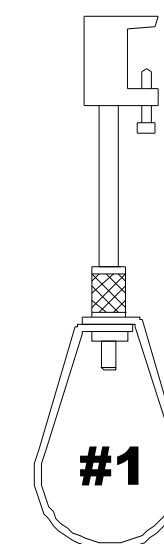
Hydraulic Information	
Remote Area Canopy	
OCCUPANCY CLASSIFICATION	Ordinary Group I
DENSITY (gpm/ft²)	0.15 for 1500.00 ft² (Actual 1127.78 ft²)
TOTAL HOSE STREAMS	250.00
TOTAL HEADS FLOWING	12
K-FACTOR	5.6
TOTAL WATER REQUIRED	456.55
TOTAL PRESSURE REQUIRED	63.530
BASE OF RISER (gpm)	295.55
BASE OF RISER (psi)	67.214
SAFETY MARGIN (psi)	+18.429 (23.4%)



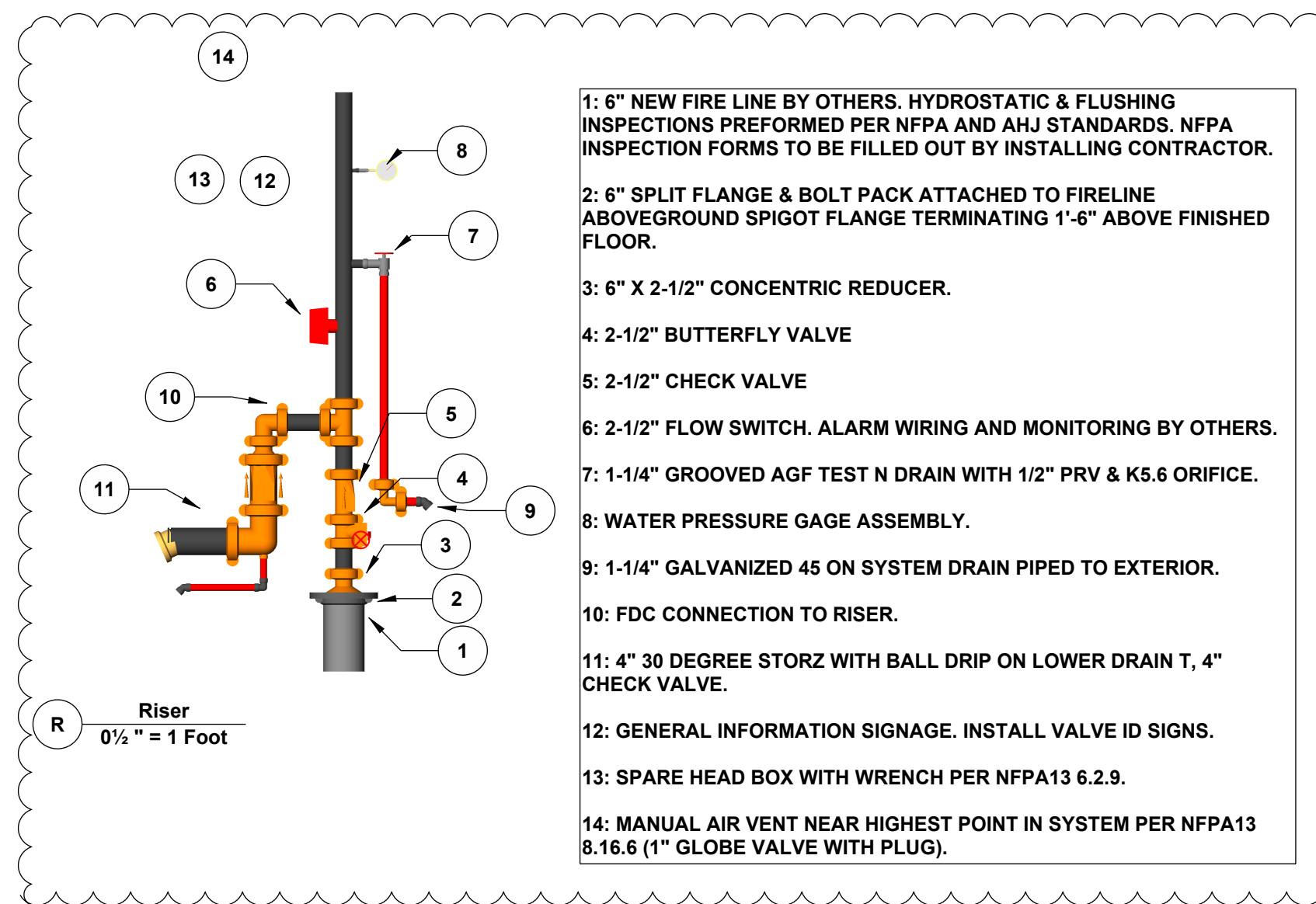
Building
0-1/8" = 1 Foot



KEY PLAN
- NOT TO SCALE -



#1: 3/8" TOP BEAM CLAMP, 3/8" ALL THREAD ROD, SPLIT HANGER RING. PIPE IS MAINLY HUNG WITH THIS HANGER.

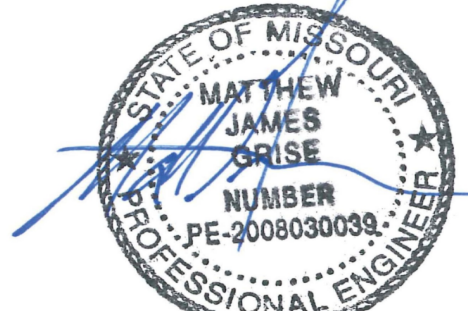


Supply Flow Test Data	
Test Conducted By	City of Lee's Summit
Date of Test	April 10 2023
Location	3511 SW Market Street
Static Pressure	84.000
Residual Pressure	68.000
Flow	2000.00

FORGE
CONSTRUCTION

SEAL:

9-6-23



UPRIGHTS TO BE ON SPRIGS (0-10" TOS)

Sprinkler Legend										
Symbol	Manufacturer	SIN	Model	Quantity	K-Factor	Type	Size	Response	Finish	Temperature
○	Viking	VK300	Microfast	121	5.6	Upright	1/2"	Quick	Brass	175°F
●	Viking	VK302	Microfast	8	5.6	Pendent	1/2"	Quick	Chrome	175°F
▶	Tyco	TY3335	DS-1	12	5.6	Sidewall	1"	Quick	Chrome	175°F
				Total = 141						
										Dry Sidewall

1. FIRE SPRINKLER DESIGN PER NFPA 13 2016 EDITION.
2. OWNER SHALL MAINTAIN SYSTEM PER NFPA 25.
3. ALL MATERIALS USED SHALL COMPLY WITH SPECIFIED REQUIREMENTS.
4. CONTINUOUS CENTRAL MONITORING OF ALARM COMPONENTS PER NFPA 72 SHALL BE BY OTHERS.
5. ALL ALARM AND ELECTRICAL WORK ASSOCIATED WITH INSTALLED COMPONENTS SHALL BE BY OTHERS.
6. ALL UNDERGROUND WORK BY OTHERS. FIRE LINE SHALL BE FLUSHED PER NFPA 24 REQUIREMENTS OVER AND ABOVE LOCAL WATER JURISDICTION REQUIREMENTS. NFPA TEST PAPERS FILLED OUT AND SIGNED BY INSTALLER SHALL BE SUBMITTED TO GENERAL CONTRACTOR PRIOR TO THE ABOVEGROUND SYSTEM BEING PUT INTO SERVICE.
7. ANY PAINTING OF PIPE BY OTHERS.
8. CONDITIONING OF BUILDING ENVELOPE TO PREVENT WATER FREEZING IN PIPES SHALL BE BY OTHERS BEFORE AND AFTER OCCUPANCY.
9. ANY LABELING OF PIPE BY OTHERS.
10. PIPE WITH GROOVED ENDS SHOULD BE SCHEDULE 10.
11. PIPE WITH THREADED ENDS SHALL BE SCHEDULE 40.

REVISIONS:
RISER DIAGRAM CHANGE 9-6-23

SCALE: 1/8" = 1'



PLOT DATE: 09/06/23 FILE NAME: Westlake Lees summit draw.cad

SHEET NO:
1 OF 1

JOB NAME:
Westlake Lee's Summit
3511 SW Market Street Lee's Summit MO 64082
CONTRACTOR:
Forge Construction
11307 Union Ave, Kansas City, MO 64101