

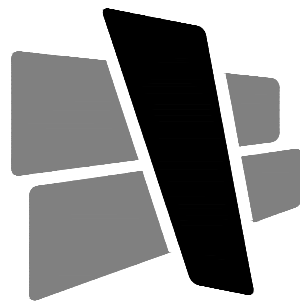
A001	INDEX
A002	TYPICAL ACCESSIBILITY DETAILS
A003	UL WALL ASSEMBLIES
A100	LIFE SAFETY PLAN
A101	FLOOR PLAN
A110	REFLECTED CEILING PLAN
A601	DOOR & FINISH SCHEDULE
A820	CASEWORK ELEVATIONS & DETAILS

MIDWEST DISTRIBUTION TI

1220 NW MAIN STREET
LEE'S SUMMIT, MO
64086

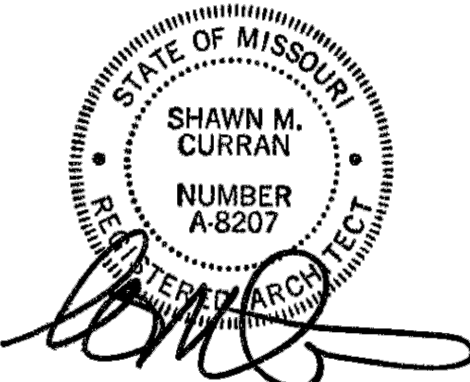
08.29.23
PERMIT SET

ARCHITECT



CURRAN
ARCHITECTURE

5719 LAWTON LOOP E. DR. #212
INDIANAPOLIS, IN 46216
O : 317 . 288 . 0681
CONTACT : SHAWN CURRAN



5719 LAWTON LOOP E. DR. #212
INDIANAPOLIS, IN 46216
O :: 317.288.0681
F :: 317.288.0753

TOILET PAPER: TOILET PAPER DISPENSERS SHALL BE INSTALLED WITHIN 36" MAX OF THE BACK WALL.



PROJECT INFORMATION

MIDWEST DISTRIBUTION TI

PERMIT SET 08.29.23

A002

UL® **CERTIFICATIONS DIRECTORY**

[Home](#) [Quick Guide](#) [Contact Us](#) [UL.com](#)

Design No. U465

BXUW-U465 Fire Resistance Ratings - ANS/UL 263

[Page Bottom](#)

Design/System/Construction/Assembly Usage Disclaimer

- Authorities having jurisdiction should be consulted in all cases as to the particular requirements covering the installation and use of UL Certified products, equipment, systems, devices, and materials.
- Authorities having jurisdiction should be consulted before construction.
- Fire resistance assemblies and products are developed by the design submitter and have been investigated by UL in compliance with applicable requirements. The published information cannot always address every construction nuance encountered in the field.
- When field issues arise, it is recommended the first contact for assistance be the technical service staff provided by the product manufacturer noted for the design. Users of the resistance assemblies are advised to consult the general Guide Information for each product category and each group of assemblies. The Guide Information includes specifics concerning alternate materials and alternate methods of construction.
- Only products which bear UL's Mark are considered Certified.

Fire-resistance Ratings - ANS/UL 263

[See General Information for Fire-resistance Ratings - ANS/UL 263](#)

Design No. U465

June 07, 2013

Nonbearing Wall Rating – 1 HR.

The diagram illustrates a cross-section of a nonbearing wall assembly. It shows a central cavity filled with insulation, flanked by concrete or masonry walls. Various components are labeled with circled numbers: 1 points to the ceiling runner, 2 points to the ceiling runner, 3 points to the ceiling runner, 4 points to the ceiling runner, 5 points to the ceiling runner, 6 points to the ceiling runner, and 7 points to the ceiling runner. The drawing is a technical cross-section showing the internal structure of the wall assembly, including the insulation and the placement of the runners.

1. Floor and Ceiling Runners – (Not shown) – Channel shaped runners, 3/8 in. deep (min), 1 1/4 in. legs, formed from min 24 MSG gal steel, attached to floor and ceiling with fasteners spaced 24 in. OC.

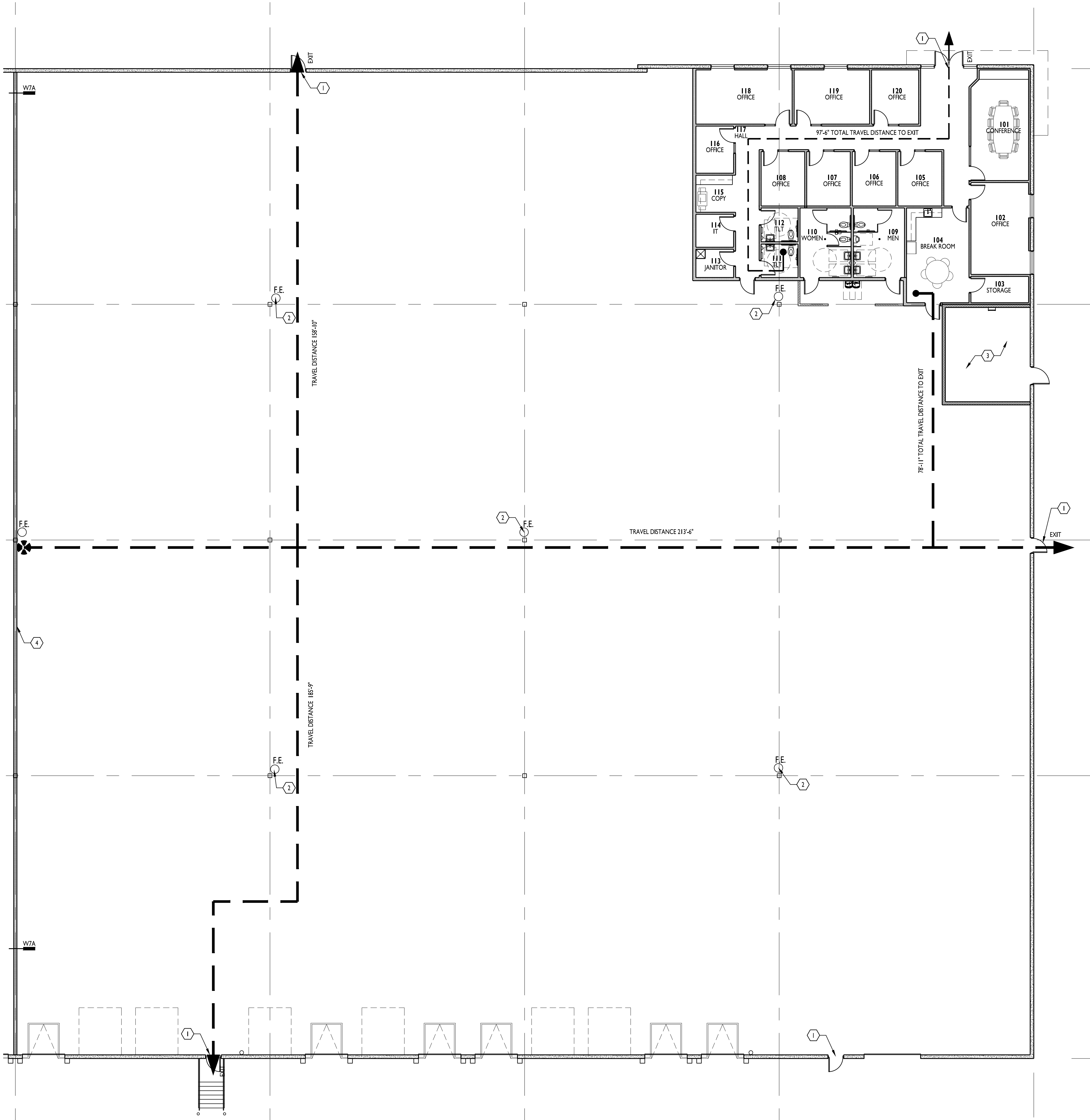
1A. Framing Members – (Not shown) – (Not shown) – As an alternate to Item 1 – Channel shaped, min 3/8 in. deep, attached to floor and ceiling with fasteners at 24 in. OC, max.

ALSTEEL & GYPSUM PLASTER FRAMING INC. – Type SUPREME Framing System

CONSOLIDATED FABRICATORS CORP., BUILDING PRODUCTS DIV. – Type SUPREME Framing System

QUAIL RUN BUILDING MATERIALS INC. – Type SUPREME Framing System

http://database.ul.com/...ANSI/UL+263&objid=1074330743&cfid=1073741824&version=versionless&parent_id=1073984818&sequence=1 [8/8/2013 8:57:01 AM]



OVERALL LIFE SAFETY PLAN
3/32" = 1'-0"

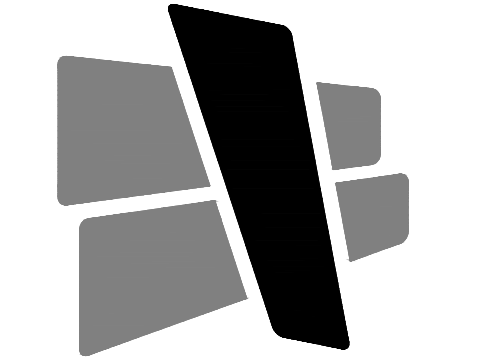
KEYED NOTES

1. EXIT, EXIT SIGN, AND EMERGENCY LIGHTING ABOVE DOOR
INTERIOR WITH BATTERY BACKUP. EXTERIOR EGRESS
LIGHTING ABOVE DOOR TIED TO BATTERY BACK UP.
2. PROPOSED FIRE EXTINGUISHER LOCATION. VERIFY WITH FIRE
MARSHAL. FINAL QUANTITY AND LOCATIONS TO BE
DETERMINED WITH FINAL RACKING PLAN AND FIRE
DEPARTMENT REVIEW.
3. EXISTING PUMP ROOM.
4. 1 HOUR RATED DEMISING WALL, CENTERED ON COLUMN
LINE.

CODE ANALYSIS

APPLICABLE CODES	
BUILDING CODE	2018 INTERNATIONAL BUILDING CODE
PLUMBING CODE	2017 INTERNATIONAL PLUMBING CODE
ELECTRICAL CODE	2017 NATIONAL ELECTRICAL CODE
FIRE CODE	2018 INTERNATIONAL FIRE CODE
MECHANICAL CODE	2014 INTERNATIONAL MECHANICAL CODE
FUEL GAS CODE	2018 FUEL GAS CODE
HANDICAPPED ACCESSIBILITY CODE	2009 ANSI A117.1 ADA ACCESSIBILITY GUIDELINES
OCCUPANCY (OVERALL BUILDING)	
CLASSIFICATION (302.1):	S-1
OCCUPANCY (TENANT SPACE)	
CLASSIFICATION (302.1):	S-1
ACCESSORY USES (508.2.1):	B
NON-SEPARATED USES (508.3.2):	N/A
SEPARATED USES (508.3.3):	N/A
AUTOMATIC SPRINKLER SYSTEM	
SPRINKLER SYSTEM REQUIRED (903):	YES
SPRINKLER SYSTEM PROVIDED:	YES
ALLOWABLE BUILDING HEIGHT	
TABULAR HEIGHT (503):	2 STORY
ALLOWABLE BUILDING AREA	
TABULAR AREA (503):	17,500 SF
BUILDING AREA INCREASE	
INCREASE FOR SPRINKLERED BUILDING (506.3):	300%
UNLIMITED AREA (507):	UNLIMITED
FRONTAGE INCREASE (506.2):	N/A
$If = (F/P - .25) \times W / 30$	
TOTAL ALLOWABLE AREA WITH INCREASES:	UNLIMITED
$A_2 = A_1 + (A_1 \times If) + (A_1 \times Is)$	
$A_3 = FILL IN$	
ACTUAL BUILDING HEIGHT AND AREA	
BUILDING AREA:	131,615 SF
BUILDING HEIGHT (FEET / # FLOORS):	42' / 1 FLR
TENANT AREA:	45,438 SF
TABULAR OCCUPANT LOAD (1004.1.2)	
WAREHOUSE/STORAGE: 41,934/500	84
OFFICE: 3,504/100	36
TABULAR OCCUPANTS	120
ACTUAL OCCUPANT LOAD (1004.1.2)	
	120
FIRE RESISTIVE REQUIREMENTS (601 AND 602)	
CONSTRUCTION TYPE:	II-B
STRUCTURAL FRAME:	NR
EXTERIOR BEARING WALLS:	NR
INTERIOR BEARING WALLS:	NR
EXTERIOR NON-BEARING WALLS:	NR
INTERIOR NON-BEARING WALLS:	NR
FLOOR CONSTRUCTION:	NR
ROOF CONSTRUCTION:	NR
SHAFTS:	N/A

FIRE RESISTANCE RATED CONSTRUCTION (704, 601, 602)	
RATED EXTERIOR WALLS:	N/A
FIRE SEPARATION DISTANCE	60+
UNPROTECTED OPENING AREA:	N/A
INTERIOR WALL AND CEILING FINISH REQUIREMENTS (803)	
SEE FINISH SCHEDULE FOR MATERIALS	
ALL MATERIALS ARE CLASS A RATED	
FIRE PROTECTION SYSTEMS	
STANDPIPE SYSTEM (905):	YES
PORTABLE FIRE EXTINGUISHERS (906.1):	SEE PLAN
FIRE ALARM AND DETECTION SYSTEMS (907):	YES
SMOKE CONTROL SYSTEMS (909):	N/A
SMOKE AND HEAT VENTS (910):	N/A
EGRESS	
MINIMUM WIDTH FACTOR (1005.1):	0.15"
REQUIRED MINIMUM WIDTH FROM SPACE (1005.1):	14.4"
MINIMUM NUMBER OF EXITS (1015):	1
ACTUAL NUMBER OF EXITS:	4
ACTUAL WIDTH OF EXITS:	180"
ALLOWABLE TRAVEL DISTANCE (1016.2):	400'
CORRIDOR CONSTRUCTION (1018.1):	N/R
MINIMUM CORRIDOR WIDTH (1018.2):	44"
MAXIMUM DEAD END CORRIDOR (1018.4):	50'
PLUMBING FIXTURE COUNTS	
REQUIRED FIXTURES S-1 (50 / 50 SPLIT MEN/WOMEN)	
MEN-42 OCCUPANTS	1
TOILETS	1
LAVATORIES	1
WOMEN-42 OCCUPANTS	1
TOILETS	1
LAVATORIES	1
SERVICE SINKS	1
DRINKING FOUNTAINS	1
REQUIRED FIXTURES B (50 / 50 SPLIT MEN/WOMEN)	
MEN-18 OCCUPANTS	1
TOILETS	1
LAVATORIES	1
WOMEN-18 OCCUPANTS	1
TOILETS	1
LAVATORIES	1
SERVICE SINKS	1
DRINKING FOUNTAINS	1
PROVIDED FIXTURES	
MEN	2
TOILETS	1
URINAL	3
LAVATORIES	1
WOMEN	3
TOILETS	3
LAVATORIES	1
SERVICE SINKS	1
DRINKING FOUNTAINS	1

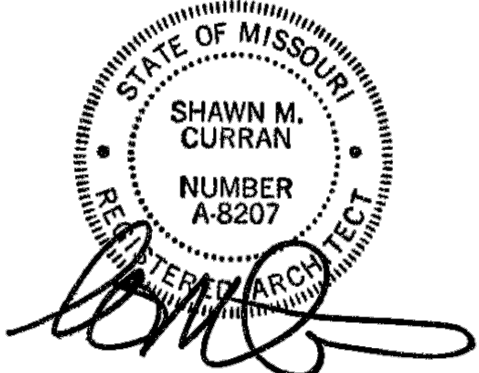


CURRAN
ARCHITECTURE

5719 LAWTON LOOP E. DR. #212
INDIANAPOLIS, IN 46216
O :: 317 . 288 . 0681
F :: 317 . 288 . 0753



CERTIFICATION



THIS DRAWING AND THE IDEAS, DESIGNS
AND CONCEPTS CONTAINED HEREIN ARE
THE EXCLUSIVE INTELLECTUAL PROPERTY
OF CURRAN ARCHITECTURE, AND ARE NOT
TO BE USED OR REPRODUCED, WHOLE OR
IN PART, WITHOUT THE WRITTEN
CONSENT OF CURRAN ARCHITECTURE.
© COPYRIGHT 2023, CURRAN ARCHITECTURE

PROJECT INFORMATION

MIDWEST DISTRIBUTION TI

1220 NW MAIN STREET
LEE'S SUMMIT, MO 64086

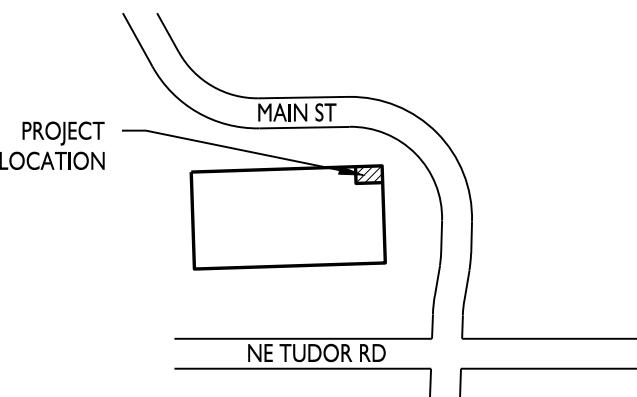
ISSUE DATES

PERMIT SET 08.29.23

230139

LIFE SAFETY PLAN

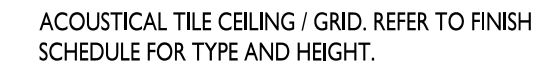
A100



KEY PLAN



(NOT ALL MAY APPLY)



118 OFFICE

119 OFFICE

120 OFFICE

117 HALL

116 OFFICE

115 COPY

114 IT

113 JANITOR

108 OFFICE

107 OFFICE

106 OFFICE

105 OFFICE

112 FLT

111 FLT

110 WOMEN


109 MEN

104 BREAK ROOM

101 CONFERENCE

102 OFFICE

103 STORAGE

 $\frac{1}{8"} = 1'-0"$



STATE OF MISSOURI
SHAWN M. CURRAN
NUMBER
A-8207

PROJECT INFORMATION

MIDWEST DISTRIBUTION TI

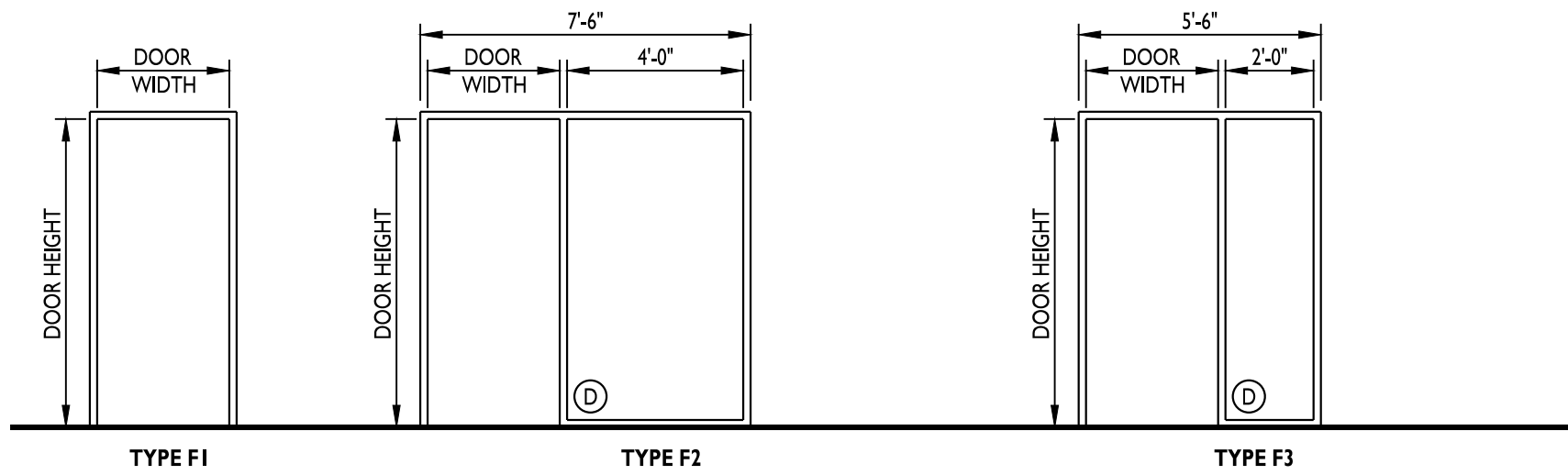
PERMIT SET 08.29.23

REFLECTED CEILING PLAN

A110

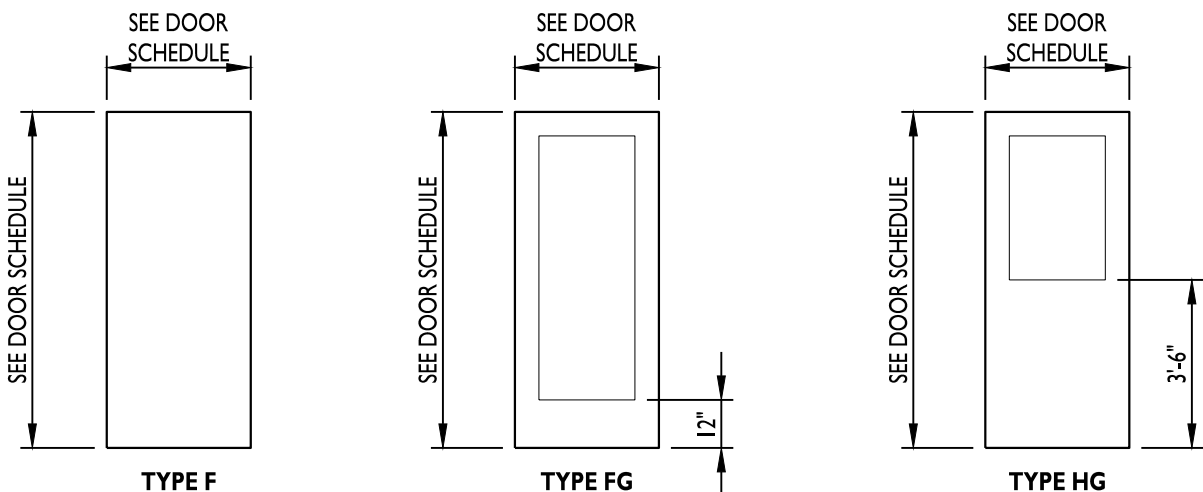
MATERIALS SCHEDULE						
MARK	MATERIAL	MANUFACTURER	COLOR	PATTERN / TEXTURE	NUMBER	REMARKS
SC-1	SEALED CONCRETE					
B-1	WALL BASE					
CPT-1	CARPET					
T-1	WALL TILE					
T-2	FLOOR TILE					
P-1	PAINT					
P-2	PAINT					
P-3	PAINT					
PL-1	PLASTIC LAMINATE					
PL-2	PLASTIC LAMINATE					
SS-1	SOLID SURFACE					
ACT-1	ACOUSTIC CEILING TILE					

ROOM FINISH SCHEDULE										
ROOM #	ROOM NAME	FLOORING	BASE	NORTH WALL	EAST WALL	SOUTH WALL	WEST WALL	CABINETS / COUNTERTOPS	CEILING MAT / HEIGHT	REMARKS
101	CONFERENCE	CPT-1	B-1	P-1	P-1	P-1	P-1	--	ACT-1 / 10-6	
102	OFFICE	CPT-1	B-1	P-1	P-1	P-3	P-1	-	ACT-1 / 10-6	
103	STORAGE	SC-1	B-1	P-1	P-1	P-1	P-1	-	ACT-1 / 9-0	
104	BREAK ROOM	LVT-1	B-1	P-1	P-1	P-1	P-2	PL-1 / SS-1	ACT-1 / 9-0	
105	OFFICE	CPT-1	B-1	P-1	P-1	P-3	P-1	-	ACT-1 / 9-0	
106	OFFICE	CPT-1	B-1	P-1	P-1	P-3	P-1	-	ACT-1 / 9-0	
107	OFFICE	CPT-1	B-1	P-1	P-1	P-3	P-1	-	ACT-1 / 9-0	
108	OFFICE	CPT-1	B-1	P-1	P-1	P-3	P-1	-	ACT-1 / 9-0	
109	MEN	T-2	--	T-1 / P-1	T-1 / P-1	T-1 / P-1	T-1 / P-1	-	ACT-1 / 9-0	T-1 TO 60" AFF. PROVIDE SCHLUTER STRIP @ TOP OF TILE AND SCHLUTER SANITARY COVE @ FLOORLINE.
110	WOMEN	T-2	--	T-1 / P-1	T-1 / P-1	T-1 / P-1	T-1 / P-1	-	ACT-1 / 9-0	T-1 TO 60" AFF. PROVIDE SCHLUTER STRIP @ TOP OF TILE AND SCHLUTER SANITARY COVE @ FLOORLINE.
111	TLT	T-2	--	T-1 / P-1	T-1 / P-1	T-1 / P-1	T-1 / P-1	-	ACT-1 / 9-0	T-1 TO 60" AFF. PROVIDE SCHLUTER STRIP @ TOP OF TILE AND SCHLUTER SANITARY COVE @ FLOORLINE.
112	TLT	T-2	--	T-1 / P-1	T-1 / P-1	T-1 / P-1	T-1 / P-1	-	ACT-1 / 9-0	T-1 TO 60" AFF. PROVIDE SCHLUTER STRIP @ TOP OF TILE AND SCHLUTER SANITARY COVE @ FLOORLINE.
113	JANITOR	SC-1	B-1	P-1	P-1	P-1	P-1	--	ACT-1 / 9-0	
114	IT	SC-1	B-1	P-1	P-1	P-1	P-1	--	ACT-1 / 9-0	
115	COPY	CPT-1	B-1	P-1	P-1	P-1	P-1	PL-1 / PL-2	ACT-1 / 9-0	
116	OFFICE	CPT-1	B-1	P-1	P-1	P-3	P-1	-	ACT-1 / 9-0	
117	HALL	CPT-1	B-1	P-1	P-1	P-1	P-1	-	ACT-1 / 9-0	
118	OFFICE	CPT-1	B-1	P-1	P-1	P-3	P-1	-	ACT-1 / 10-6	
119	OFFICE	CPT-1	B-1	P-1	P-1	P-3	P-1	-	ACT-1 / 10-6	
120	OFFICE	CPT-1	B-1	P-1	P-1	P-3	P-1	-	ACT-1 / 10-6	



DOOR FRAME TYPES

NOT TO SCALE



DOOR TYPES

NOT TO SCALE

DOOR SCHEDULE														
MARK	DOOR	SIZE	MATERIAL	GLAZING	FINISH	RATING	FRAME	MATERIAL	FINISH	RATING	HARDWARE	REMARKS		
101	F	3-0X7-0	SCWD	D	UNFIN	--	F2	WELDED	PAINT	--	05			
102	F	3-0X7-0	SCWD	D	UNFIN	--	F3	WELDED	PAINT	--	07			
103	F	3-0X7-0	SCWD	--	UNFIN	--	F1	WELDED	PAINT	--	05			
104A	F	3-0X7-0	SCWD	--	UNFIN	--	F1	WELDED	PAINT	--	03			
104B	F	3-0X7-0	SCWD	--	UNFIN	--	F1	WELDED	PAINT	--	03			
105	F	3-0X7-0	SCWD	D	UNFIN	--	F3	WELDED	PAINT	--	05			
106	F	3-0X7-0	SCWD	D	UNFIN	--	F3	WELDED	PAINT	--	05			
107	F	3-0X7-0	SCWD	D	UNFIN	--	F3	WELDED	PAINT	--	05			
108	F	3-0X7-0	SCWD	D	UNFIN	--	F3	WELDED	PAINT	--	05			
109	F	3-0X7-0	SCWD	--	UNFIN	--	F1	WELDED	PAINT	--	06			
110	F	3-0X7-0	SCWD	--	UNFIN	--	F1	WELDED	PAINT	--	06			
111	F	3-0X7-0	SCWD	--	UNFIN	--	F1	WELDED	PAINT	--	02			
112	F	3-0X7-0	SCWD	--	UNFIN	--	F1	WELDED	PAINT	--	02			
113	F	3-0X7-0	SCWD	--	UNFIN	--	F1	WELDED	PAINT	--	05			
114	F	3-0X7-0	SCWD	--	UNFIN	--	F1	WELDED	PAINT	--	05			
116	F	3-0X7-0	SCWD	D	UNFIN	--	F3	WELDED	PAINT	--	05			
117	F	3-0X7-0	SCWD	--	UNFIN	--	F1	WELDED	PAINT	--	03			
118	F	3-0X7-0	SCWD	D	UNFIN	--	F3	WELDED	PAINT	--	05			
119	F	3-0X7-0	SCWD	D	UNFIN	--	F3	WELDED	PAINT	--	05			
120	F	3-0X7-0	SCWD	D	UNFIN	--	F3	WELDED	PAINT	--	05			

GENERAL DOOR AND GLAZING NOTES

- ALL PRE-FINISHED WOOD DOORS SHALL BE SOLID CORE WITH WOOD VENEER, MARSHFIELD OR EQUIVALENT. PROVIDE FINISH SAMPLE AND DOOR CONSTRUCTION DIAGRAM FOR APPROVAL AND HARDWARE BLOCKING COORDINATION. VENEER TO BE WHITE BIRCH OR MAPLE, FREE OF DARK GRAINS UNLESS OTHERWISE NOTED.
- WOOD DOORS SHALL ONLY BE INSTALLED IN CONDITIONED SPACE.
- ALL HARDWARE TO BE MINIMUM 4 PIN BEST COMPATIBLE SYSTEM. COORDINATE KEYING WITH OWNER.
- TEMPERED AND ANNEALED GLASS TO BE CLEANED PER MANUFACTURER REQUIREMENTS. NYLON CLOTH METHODS PREFERRED. DO NOT USE RAZOR BLADES ON GLASS.
- GLASS AROUND DOORS AND IN DOORS SHALL BE TEMPERED UNLESS OTHERWISE NOTED IN ELEVATIONS.
- ANY RATED DOORS TO HAVE LABEL INSTALLED IN JAMB.
- ALL EXITS DOORS TO HAVE TACTILE EXIT SIGNAGE PER 703.4 OF THE ANSI 117.1 2009.
- INSTALL OWNER PROVIDED ADA COMPLIANT RESTROOM SIGNAGE. VERIFY WITH ARCHITECT.

GLAZING TYPES

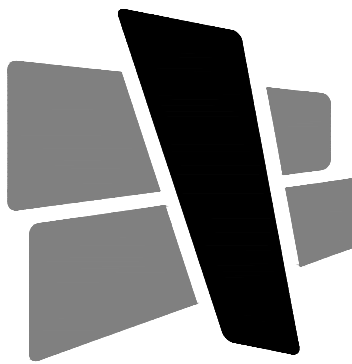
- SECTION OF GLAZING REQUIRED TO BE 1" INSULATED GREY TINTED GLASS.
- SECTION OF GLAZING REQUIRED TO BE 1" INSULATED TEMPERED GLASS.
- SECTION OF GLAZING REQUIRED TO BE 1/4" GLASS.
- SECTION OF GLAZING REQUIRED TO BE 1/4" TEMPERED GLASS.
- SECTION OF GLAZING REQUIRED TO BE 1" INSULATED TEMPERED GREY TINTED SPANDREL GLASS.

EXTERIOR GLAZING MUST MEET THE FOLLOWING SPECIFICATIONS FOR ENERGY CODE COMPLIANCE:

LOW "E" COATING
"U" VALUE - MINIMUM OF 0.28
"SHGC" VALUE - MAXIMUM OF 0.47

GENERAL FINISH NOTES

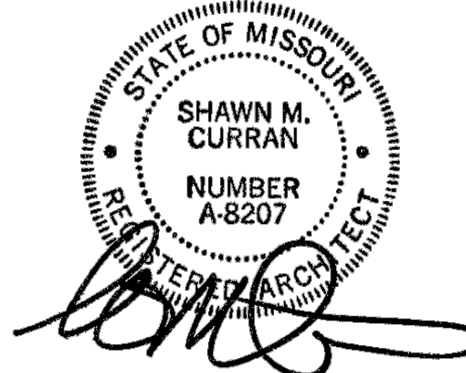
- PROCEEDING WITH THE INSTALLATION OF FINISHES WILL BE CONSTRUED THAT THE INSTALLER AND/OR FINISHER HAS INSPECTED AND ACCEPTED THE SUBSTRATE FOR RECEIVING THE WORK. NO CHANGE ORDER WILL BE ISSUED TO RECTIFY CONCEALED, UNKNOWN CONDITIONS OR UNSATISFACTORY SUBSTRATE ONCE THE FINISH WORK HAS PROCEEDED.
- USE MANUFACTURER'S RECOMMENDED INSTALLATION METHODS AND MATERIALS FOR ALL FINISHES.
- CONTRACTOR TO NOTIFY ARCHITECT IMMEDIATELY IF A SPECIFIED FINISH ITEM BECOMES UNAVAILABLE.
- CONTRACTOR TO SUBMIT SHOP DRAWINGS, FLOORING TRANSITION/GRAPHIC LOCATIONS AND SUBMITTALS OF ALL INTERIOR ITEMS AND FINISH MATERIALS TO ARCHITECT REVIEW PRIOR TO PLACING ANY MATERIAL ORDERS. CONTRACTOR MUST ACCOUNT FOR SUBMITTAL REVIEW, ORDERING AND DELIVERY WHEN SCHEDULING PRODUCT INSTALLATION.
- USE SUBFLOOR REDUCER STRIPS (UNDER FLOORING) TO LEVEL MATERIALS OF UNEQUAL HEIGHTS.
- PROVIDE JOHNSONITE SLIM-LINE TRANSITION STRIPS WHERE FLOORING MATERIALS OF UNEQUAL THICKNESS MEET. TRANSITION STRIPS AT DOORS TO BE LOCATED UNDER THE CENTERLINE OF THE DOOR IN CLOSED POSITION. COLOR OF TRANSITION STRIPS TO BE SELECTED BY ARCHITECT.
- ALL WALL TILE TO BE INSTALLED TO FLOOR WITH NO BASE UNLESS NOTED OTHERWISE.
- ANY GRILLES, FIRE EXTINGUISHER CABINETS, ETC., TO BE PAINTED TO MATCH WALL COLOR ON WHICH THEY OCCUR.
- PROVIDE OWNER WITH A MINIMUM OF ONE FULL BOX OR 2% OF EACH FINISH PRODUCT/MATERIAL SPECIFIED ON THE PROJECT.
- ALL WOODWORK/MILLWORK SHALL CONFORM TO THE QUALITY STANDARDS OF ARCHITECTURAL WOODWORK INSTITUTE (AWI) PREMIUM GRADE. FABRICATOR SHALL BE FAMILIAR WITH AWI STANDARDS.
- FABRICATE WOODWORK/MILLWORK ITEMS TO ACTUAL FIELD DIMENSIONS. CONTRACTOR SHALL SUBMIT SHOP DRAWINGS, SAMPLES, AND/OR MATERIAL LITERATURE FOR ALL ITEMS. SHOP DRAWINGS SHALL SHOW SUFFICIENT DETAIL TO DETERMINE COMPLIANCE WITH THE QUALITY STANDARDS AND DESIGN INTENT.
- PROVIDE ALL NECESSARY FURRING AND GROUNDS FOR WOODWORK AND FINISH ITEMS. COORDINATE LOCATION OF BLOCKING WITHIN WALLS FOR ITEMS TO BE SECURED TO SURFACE. ALL FASTENERS SHALL BE CONCEALED.
- FINISH ALL SIDES AND BACK OF MILLWORK/CASEWORK.
- ALL COUNTERTOPS TO BE 1 1/2" THICK WITH A SQUARE EDGE, UNLESS OTHERWISE NOTED. PROVIDE COUNTER SUPPORTS AS REQUIRED.
- PROVIDE GROMMETS IN COUNTERTOPS ABOVE RECEPTACLES. COLOR TO MATCH COUNTER SURFACE. COORDINATE WITH OWNER AND ARCHITECT ON FINAL LOCATION AND SIZE OF GROMMETS BEFORE INSTALLATION.
- REFER TO FINISH SCHEDULE, INTERIOR ELEVATIONS AND SPECIFICATIONS FOR ALL MATERIAL INFORMATION AND LOCATIONS.



CURRAN
ARCHITECTURE

5719 LAWTON LOOP E. DR. #212
INDIANAPOLIS, IN 46216
O :: 317 . 288 . 0681
F :: 317 . 288 . 0753

CERTIFICATION



THIS DRAWING AND THE IDEAS, DESIGNS AND CONCEPTS CONTAINED HEREIN ARE THE EXCLUSIVE INTELLECTUAL PROPERTY OF CURRAN ARCHITECTURE, AND ARE NOT TO BE USED OR REPRODUCED, WHOLE OR IN PART, WITHOUT THE WRITTEN CONSENT OF CURRAN ARCHITECTURE.
© COPYRIGHT 2023, CURRAN ARCHITECTURE

PROJECT INFORMATION

MIDWEST DISTRIBUTION TI

1220 NW MAIN STREET
LEE'S SUMMIT, MO 64086

ISSUE DATES

PERMIT SET 08/29/23

230139

DOOR AND FINISH
SCHEDULE

A601

HARDWARE SET #01

- 3 HINGES
- 1 CLASSROOM LOCKSET
- 3 MUTES
- 1 CLOSER
- 1 DOOR STOP

HARDWARE SET #02

- 3 HINGES
- 1 PRIVACY LOCKSET
- 1 CLOSER
- 3 MUTES
- 1 DOOR STOP

HARDWARE SET #03

- 3 HINGES
- 1 PASSAGE SET
- 3 MUTES
- 1 CLOSER
- 1 DOOR STOP

HARDWARE SET #04

- 3 HINGES
- 1 STOREROOM LOCK SET
- 1 ELECTRIC STRIKE
- 3 MUTES
- 1 CLOSER
- 1 DOOR STOP

HARDWARE SET #05

- 3 HINGES
- 1 PASSAGE SET
- 3 MUTES
- 1 DOOR STOP

HARDWARE SET #06

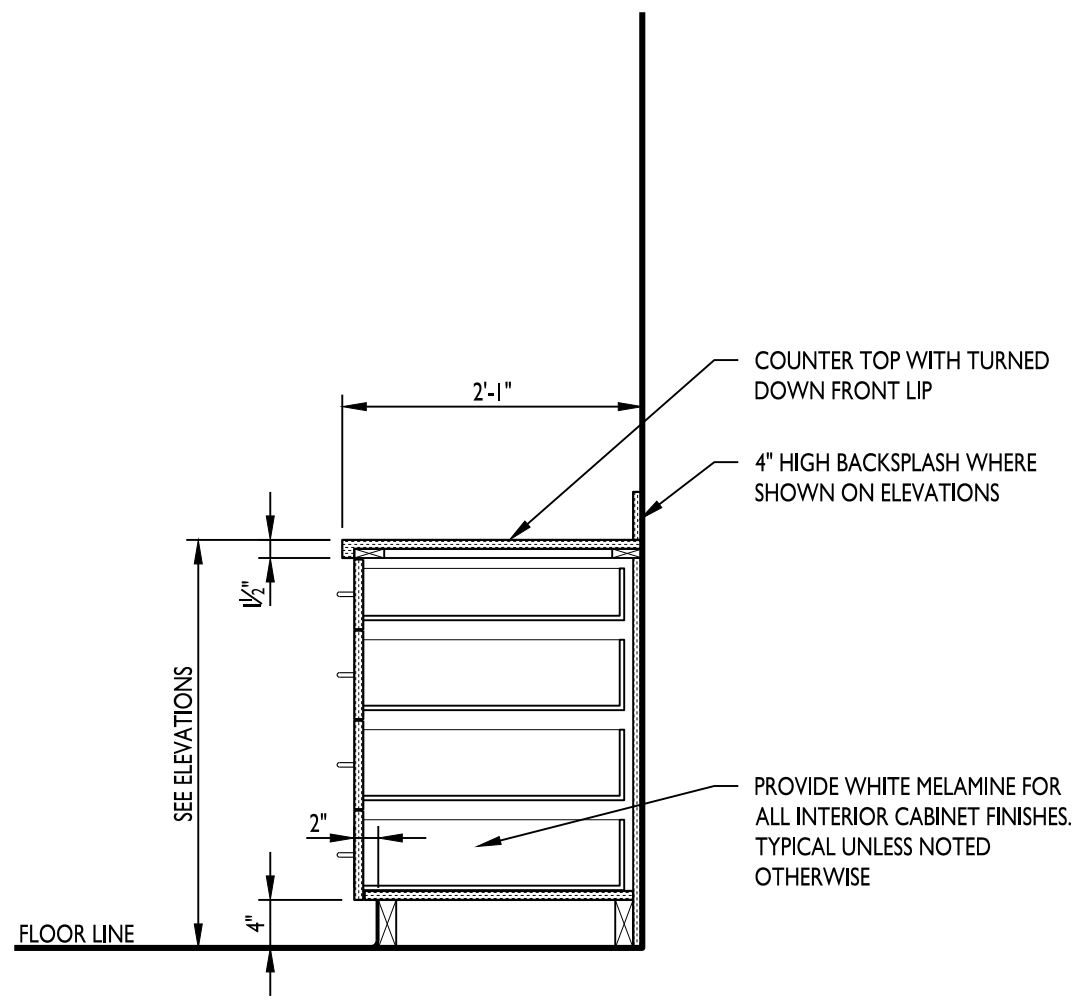
- 3 HINGES
- 1 PUSH PULL
- 1 CLOSER
- 1 KICKPLATE
- 1 DOOR STOP

HARDWARE SET #07

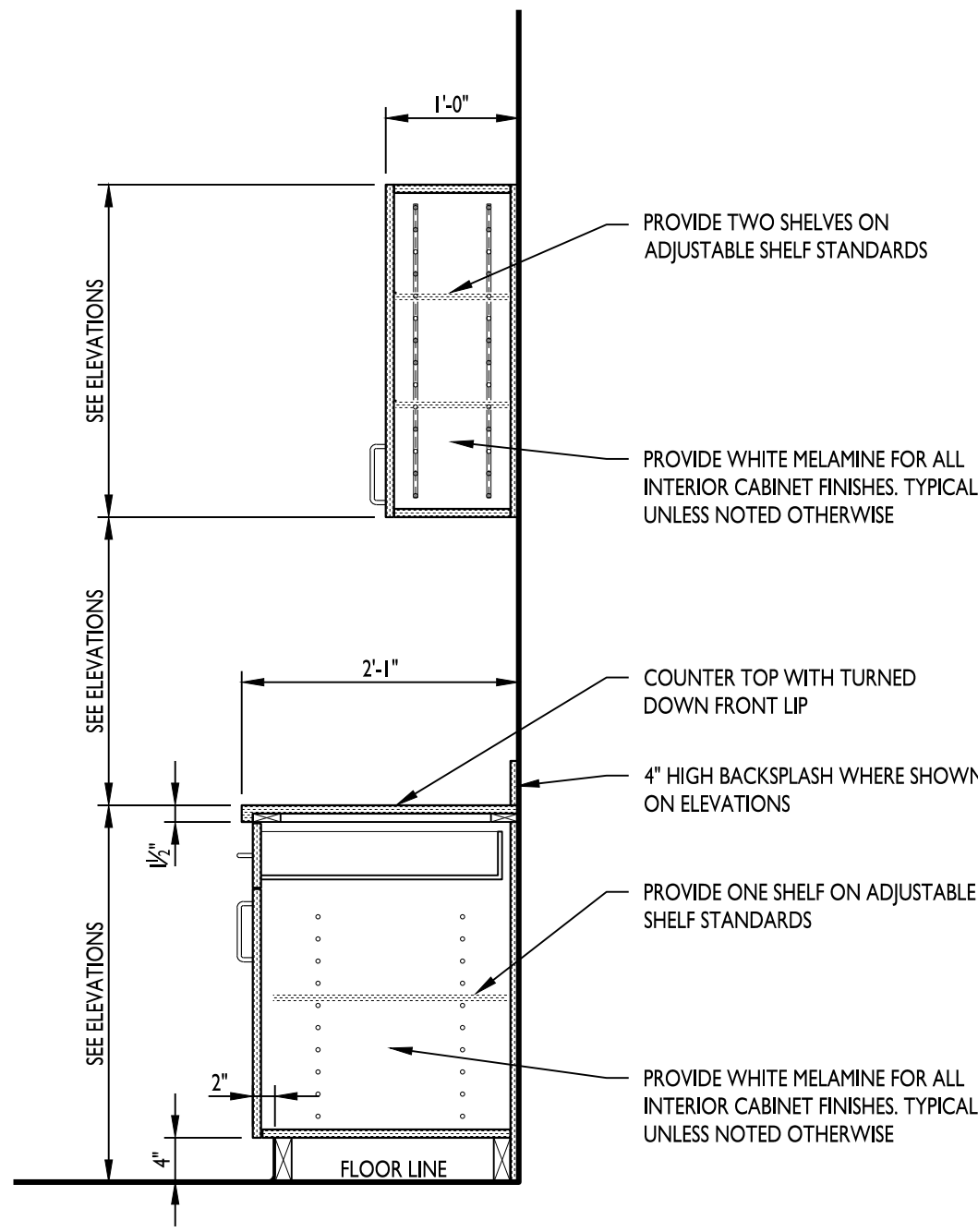
- 3 HINGES
- 1 CLASSROOM LOCKSET
- 3 MUTES
- 1 DOOR STOP

HARDWARE SET #08

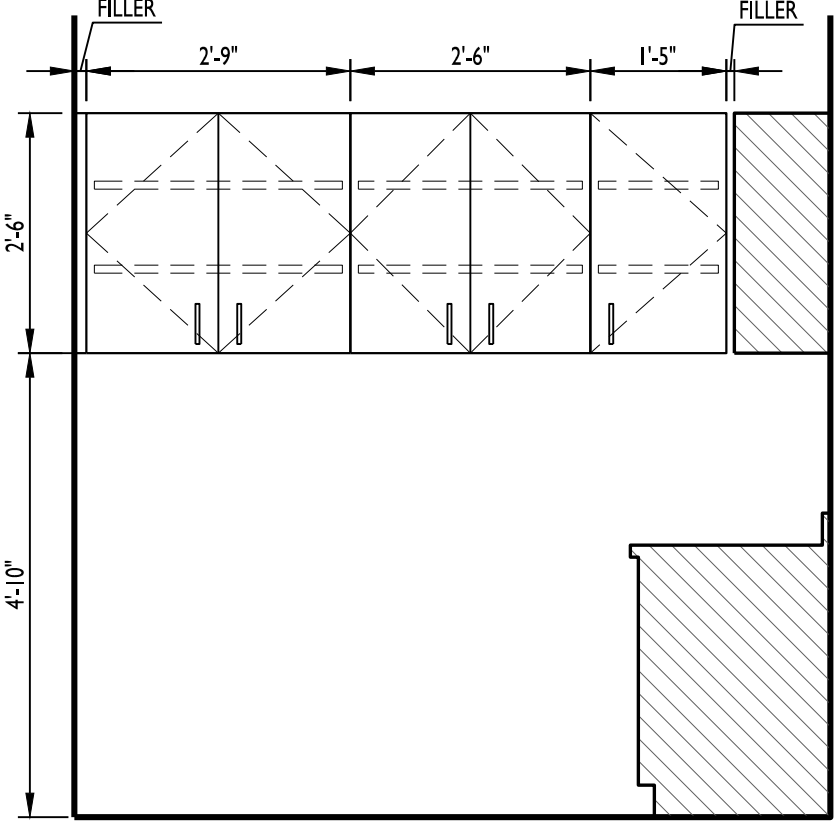
- 6 HINGES
- 3 PUSH PULLS
- 2 MUTES
- 2 CLOSERS
- 2 FLOOR STOPS



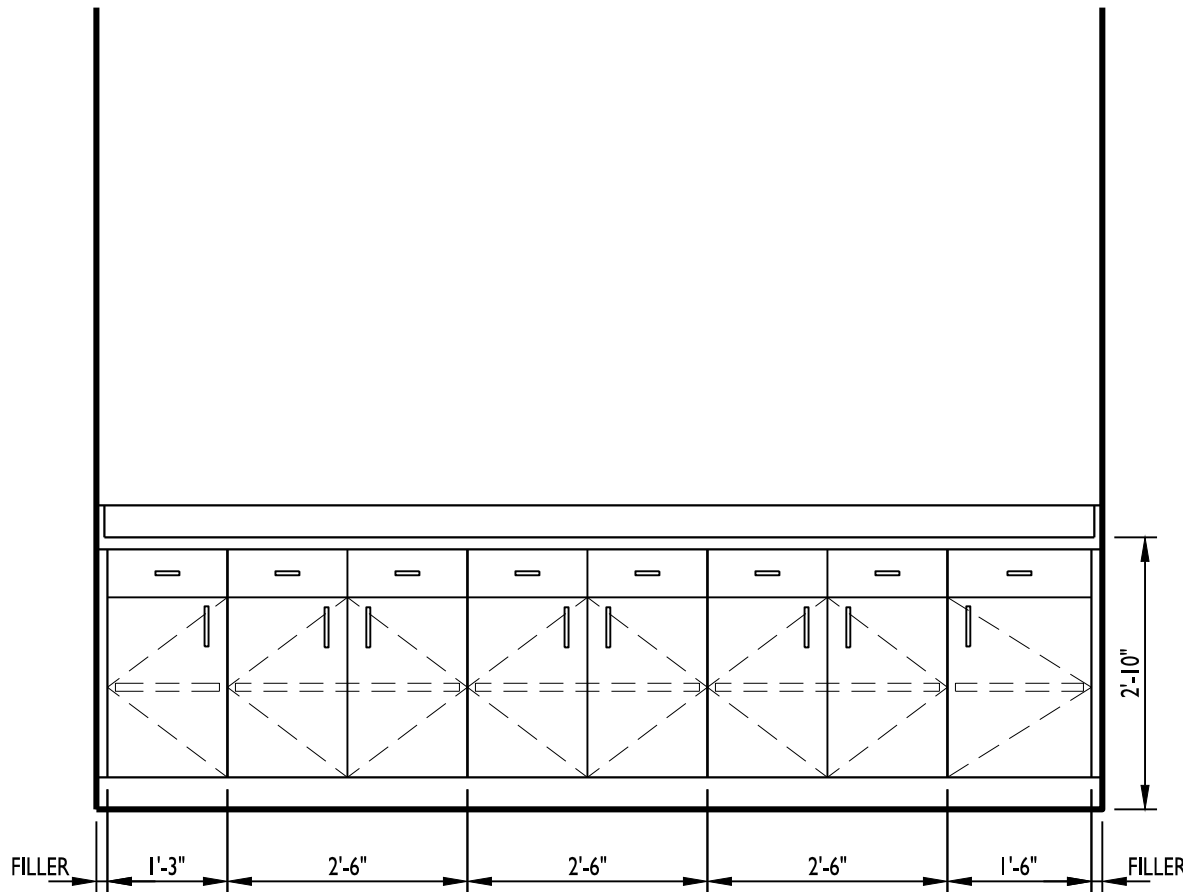
ELEVATION 7
3/4" = 1'-0"



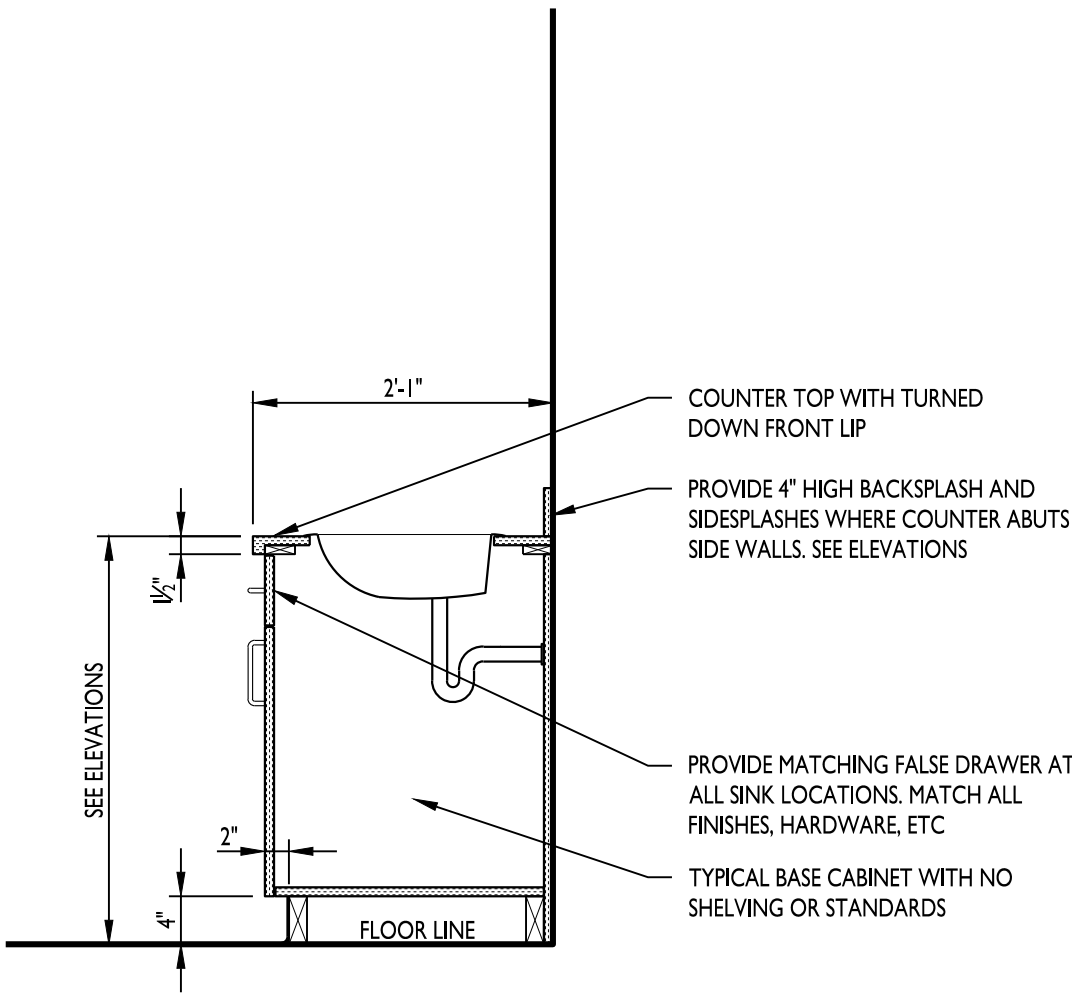
ELEVATION 8
3/4" = 1'-0"



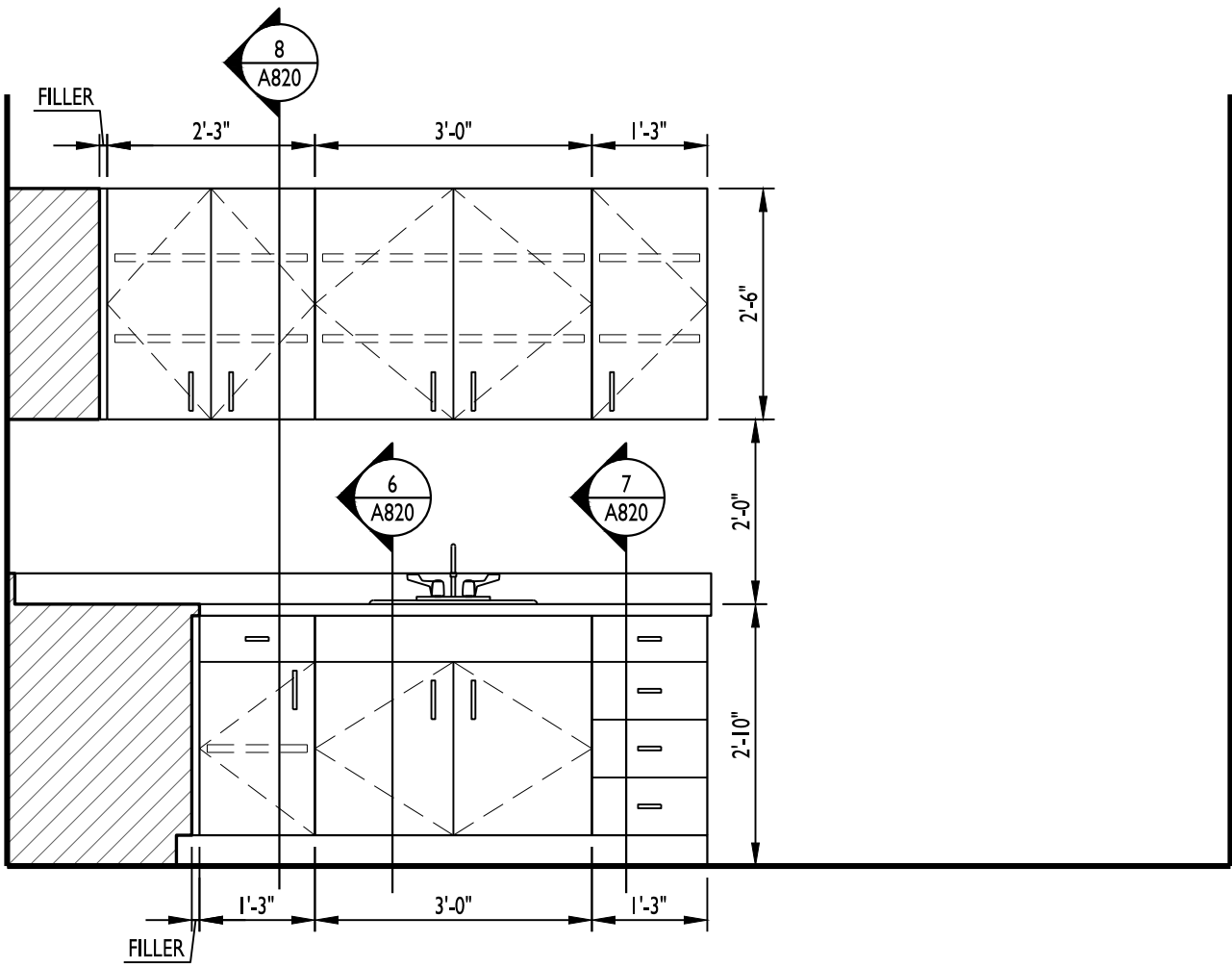
ELEVATION 4
1/2" = 1'-0"



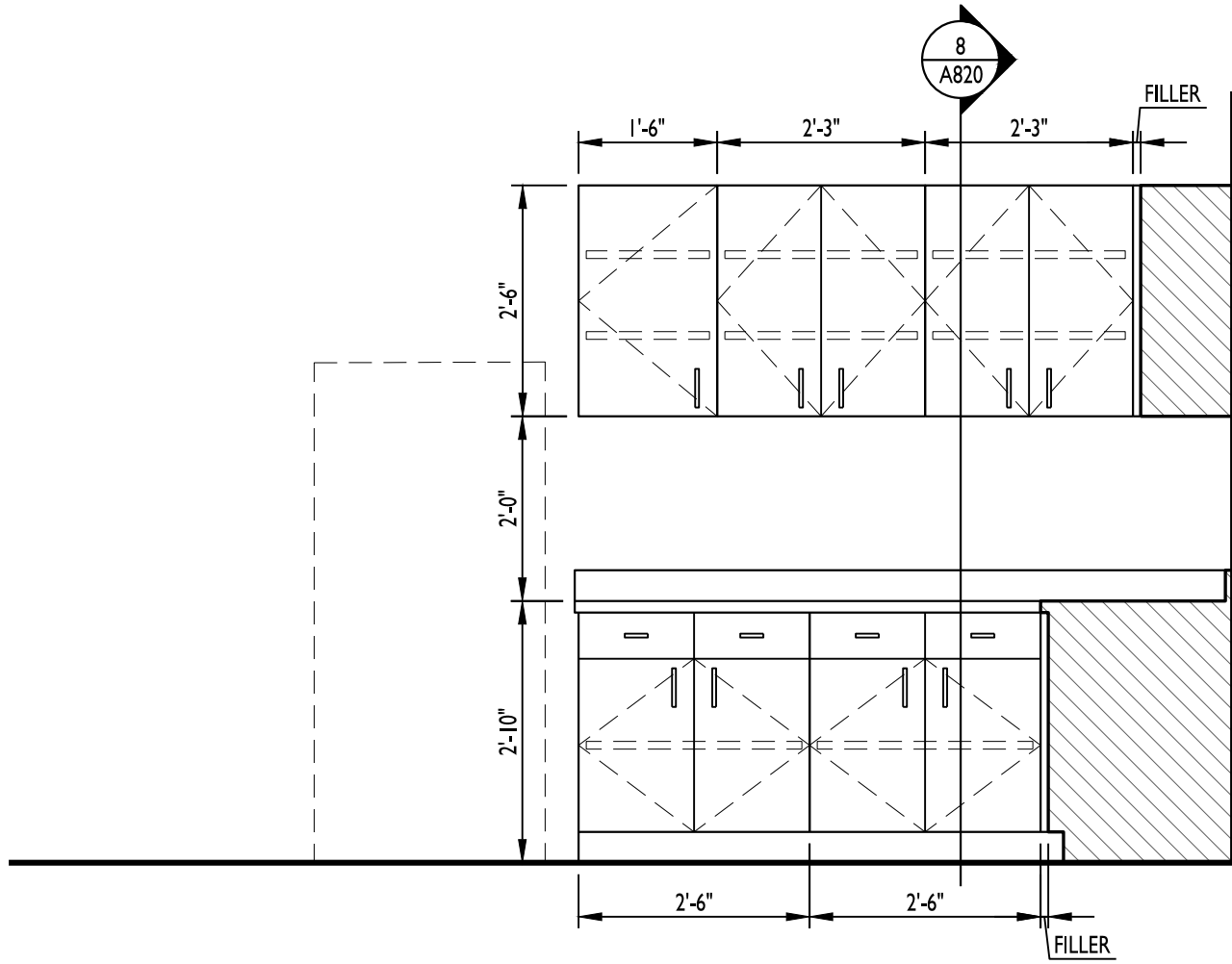
ELEVATION 5
1/2" = 1'-0"



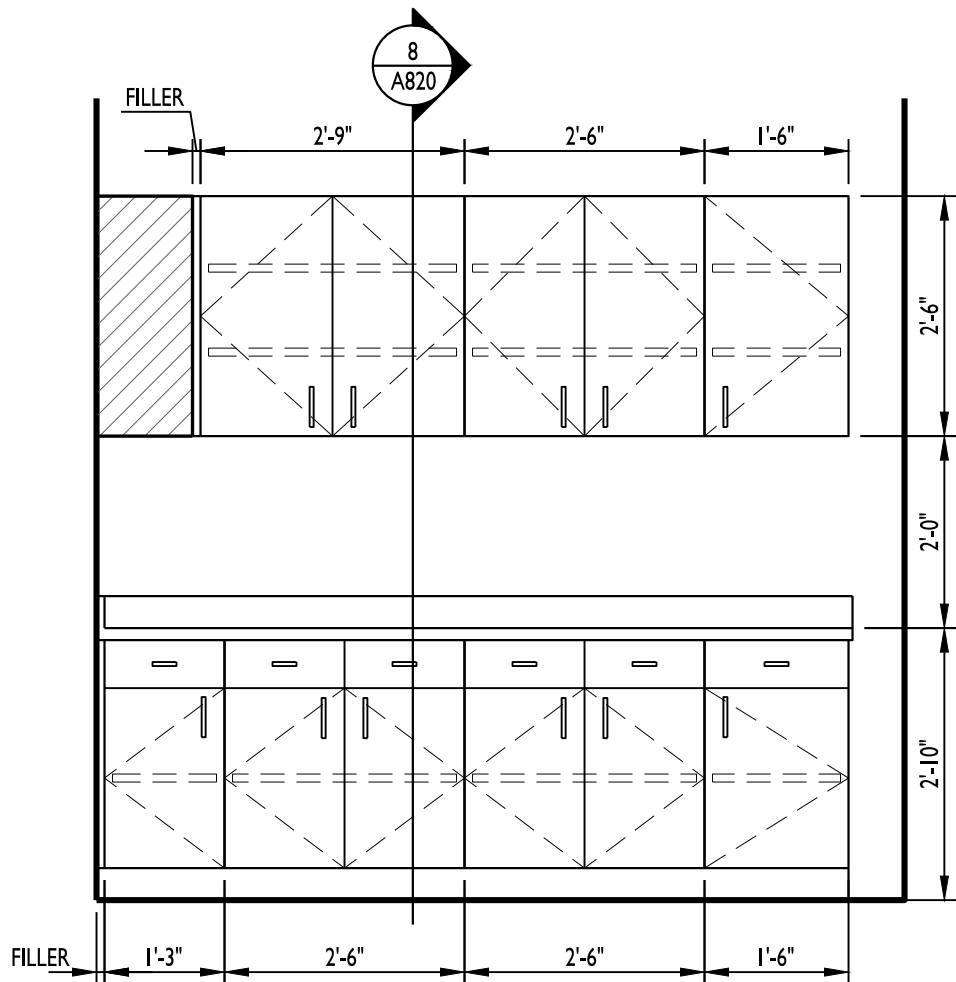
ELEVATION 6
3/4" = 1'-0"



ELEVATION 1
1/2" = 1'-0"



ELEVATION 2
1/2" = 1'-0"



ELEVATION 3
1/2" = 1'-0"

CASEWORK GENERAL NOTES

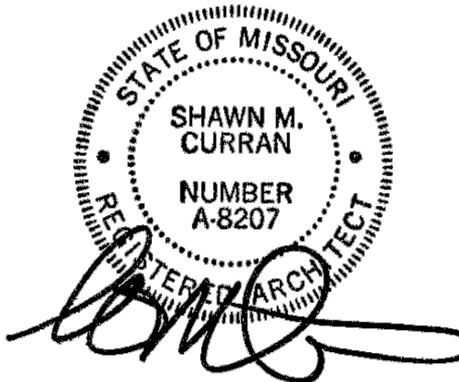
- UNLESS SPECIFICALLY OTHERWISE NOTED, PROVIDE SELF EDGE ALONG EXPOSED FACES OF ALL COUNTER TOPS.
- PROVIDE WOOD F.R. BLOCKING IN WALL WHERE REQUIRED FOR WALL AND/OR BASE CABINET INSTALLATION. COORDINATE WITH CABINET MANUFACTURER PRIOR TO BLOCKING BEING INSTALLED. AT EXTERIOR WALL PROVIDE TREATED WOOD BLOCKING.
- CONTRACTOR IS RESPONSIBLE FOR PROVIDING ADA COMPLIANT CABINETS, HANDLES, CLEAR SPACES BELOW CABINETS WHERE REQUIRED ETC. WHETHER SHOWN ON THESE DETAILS OR NOT. COORDINATE WITH ARCHITECT IF ANY DISCREPANCIES ARISE.
- IF SEPARATE SPECIFICATIONS ARE INCLUDED WITH THIS PROJECT THOSE DOCUMENTS WILL SUPERCEDE WHAT IS SHOWN AND/OR DETAILED ON THIS DRAWING. OTHERWISE THIS DRAWING AND DETAILS REPRESENT THE MINIMUM REQUIRED STANDARDS OF CONSTRUCTION FOR ALL BASE CABINETS, COUNTER TOPS, UPPER CABINETS, ETC.
- REFER TO FLOOR PLAN FOR ALL LENGTHS OF CABINET RUNS AS WELL AS LOCATIONS. REFER TO THE REFLECTED CEILING PLAN (IF INCLUDED) FOR ALL BULKHEAD LOCATIONS AND HEIGHTS.
- CASEWORK INSTALLER IS RESPONSIBLE FOR COORDINATING INSTALLATION OF ALL DIVISION 22 AND DIVISION 26 ITEMS (INCLUDING CUT OUTS) IN CASEWORK OR COUNTERTOPS. LOCATIONS AND CUT OUT COORDINATION ALSO REQUIRED FOR RECEPTACLES (DIVISION 26) IN MICROWAVE WALL CABINETS, DISHWASHER LOCATIONS, GARBAGE DISPOSAL LOCATIONS, ETC.
- PROVIDE FINISHED ENDS ON CABINETS WHERE END OF CABINET IS EXPOSED BEYOND WALL LINE, UNDER COUNTER, AT KNEE SPACE AND AT ALL SIMILAR EXPOSED AREAS.
- UNLESS NOTED OTHERWISE PROVIDE EQUAL WIDTH FILLER/SCRIBE BETWEEN WALL AND CASEWORK AT ALL LOCATIONS WHERE NONE IS SHOWN. MAXIMUM WIDTH IS TO BE 2".
- CONTRACTOR SHALL FIELD VERIFY AND CHECK ALL CONDITIONS, LOCATIONS AND DIMENSIONS PRIOR TO STARTING ANY WORK. REPORT ANY DISCREPANCIES TO ARCHITECT.
- ANY AND ALL PARTS OF ANY CABINETS OR COUNTERS THAT ARE VISIBLE MUST BE FINISHED WITH MATERIAL TO MATCH ADJACENT FINISHES. NOTIFY AND COORDINATE WITH ARCHITECT IF AREAS OF UNSPECIFIED FINISHES EXIST.
- UNLESS NOTED OTHERWISE REFER TO ROOM FINISH SCHEDULE FOR ALL CABINET FINISHES AND MATERIALS AS WELL AS ALL OTHER ASSOCIATED, MISCELLANEOUS FINISH REQUIREMENTS, UNLESS NOTED OTHERWISE ALL INTERIOR COMPONENTS TO BE WHITE MELAMINE.
- EASE ALL EXPOSED OUTSIDE EDGES AT ALL COMPONENTS FOR ITEMS SHOWN ON THIS SHEET.
- REFER TO ROOM FINISH SCHEDULE FOR ALL WALL BASE REQUIREMENTS.



CURRAN
ARCHITECTURE

5719 LAWTON LOOP E. DR. #212
INDIANAPOLIS, IN 46216
O :: 317 . 288 . 0681
F :: 317 . 288 . 0753

CERTIFICATION



THIS DRAWING AND THE IDEAS, DESIGNS AND CONCEPTS CONTAINED HEREIN ARE THE EXCLUSIVE INTELLECTUAL PROPERTY OF CURRAN ARCHITECTURE, AND ARE NOT TO BE USED OR REPRODUCED, WHOLE OR IN PART, WITHOUT THE WRITTEN CONSENT OF CURRAN ARCHITECTURE.
© COPYRIGHT 2023, CURRAN ARCHITECTURE

PROJECT INFORMATION

MIDWEST DISTRIBUTION TI

1220 NW MAIN STREET
LEE'S SUMMIT, MO 64086

ISSUE DATES

PERMIT SET 08.29.23

230139

CASEWORK ELEVATIONS

A820