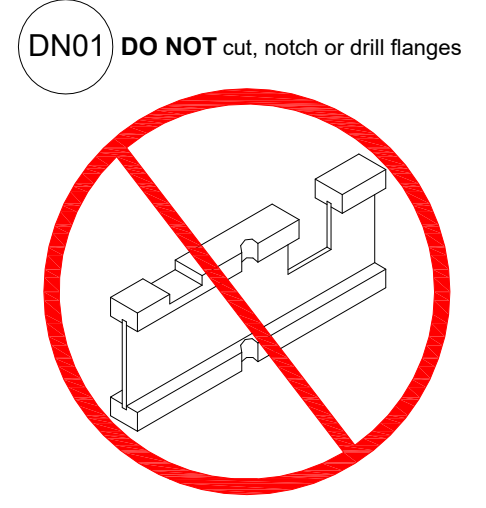
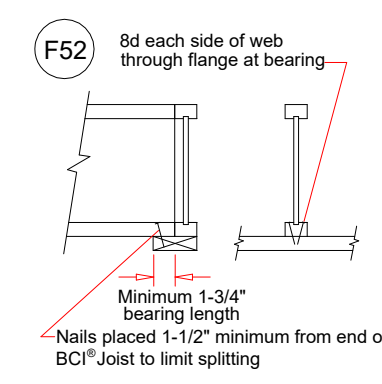
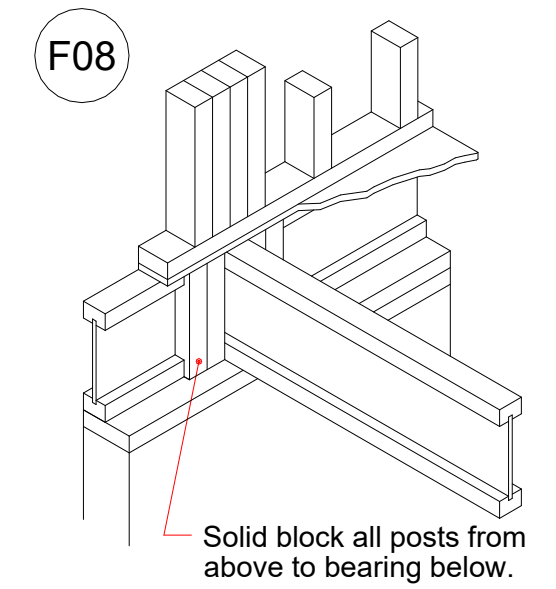


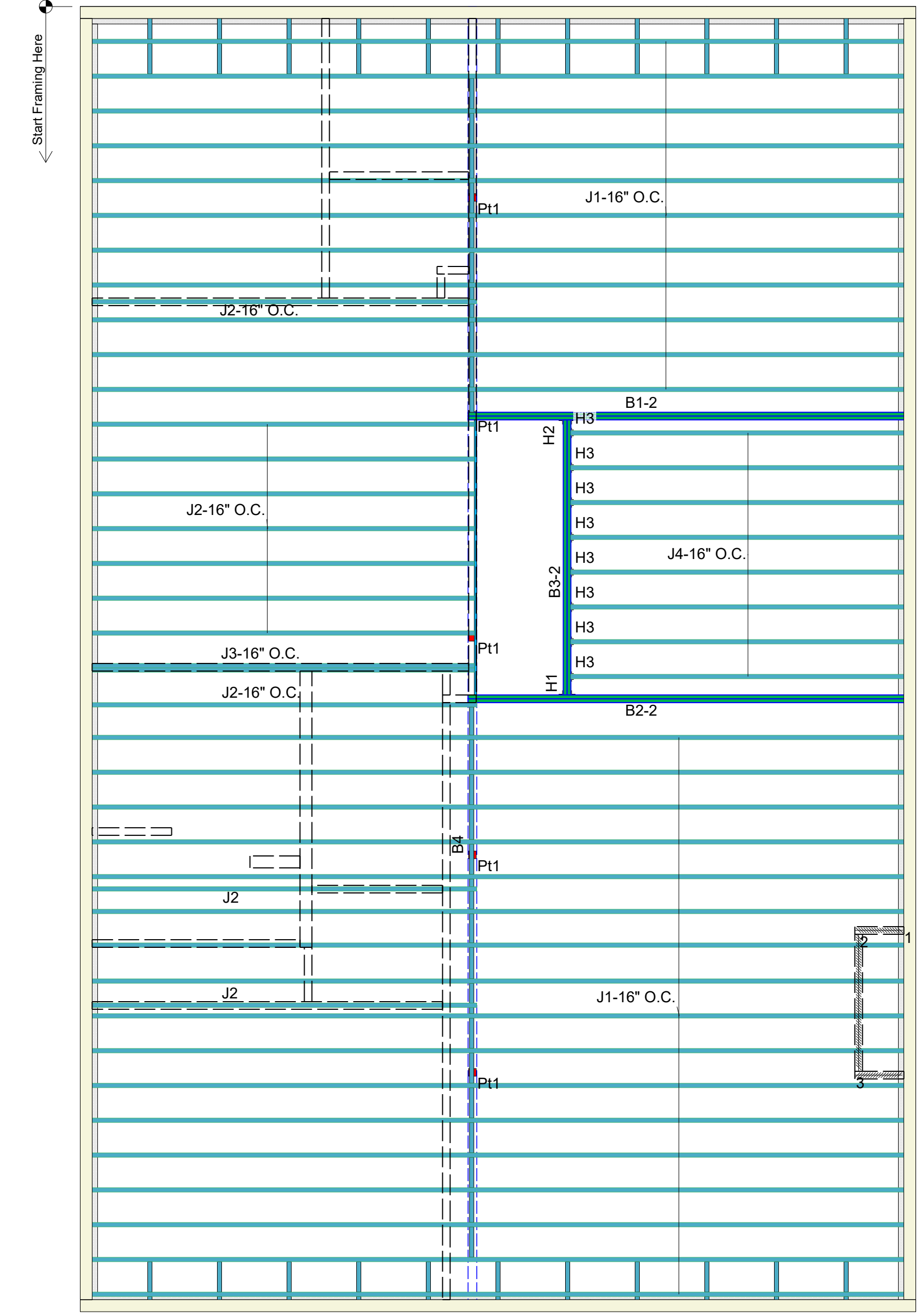
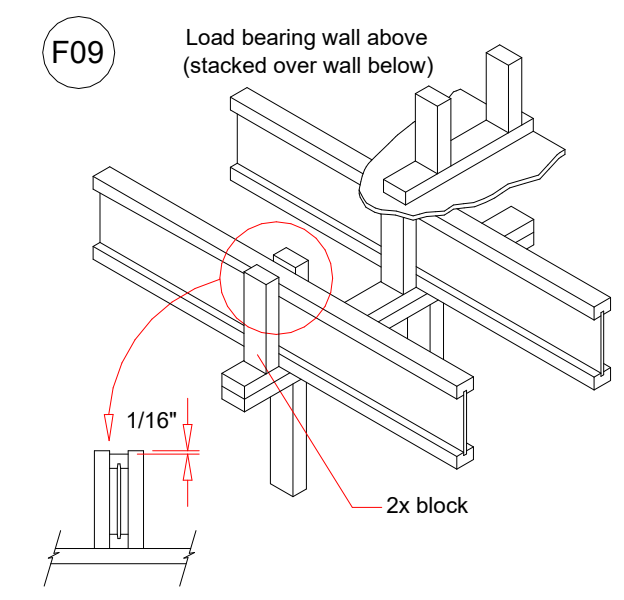
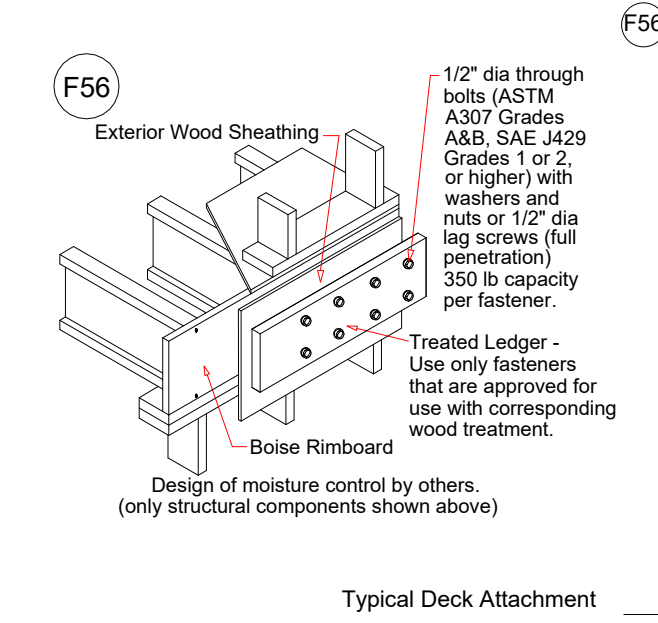
**RELEASE FOR CONSTRUCTION
AS NOTED ON PLANS REVIEW
DEVELOPMENT SERVICES
LEE'S SUMMIT, MISSOURI
08/16/2023 2:38:33**



Walker Custom Homes 500 NW Main

Recommended 1st Floor Placement Plan

Joist Spacing 16" O.C



Products				
PlotID	Net Qty	Product	Length	Plies
J1-16" O.C.	28	11-7/8" BCI@ 5000s-1.8	32' 0"	1
J2	2	11-7/8" BCI@ 5000s-1.8	16' 0"	1
J2-16" O.C.	9	11-7/8" BCI@ 5000s-1.8	16' 0"	1
J3-16" O.C.	2	11-7/8" BCI@ 5000s-1.8	16' 0"	2
J4-16" O.C.	8	11-7/8" BCI@ 5000s-1.8	14' 0"	1
B1-2	2	1-3/4" x 9-1/2" VERSA-LAM@ 2.0 3100 SP	18' 0"	2
B2-2	2	1-3/4" x 11-7/8" VERSA-LAM@ 2.0 3100 SP	18' 0"	2
B3-2	2	1-3/4" x 11-7/8" VERSA-LAM@ 2.0 3100 SP	12' 0"	2
Ca1	15	1-1/8" x 11-7/8" BC RIM BOARD OSB	12' 0"	1
Bk1	73	11-7/8" BCI@ 5000s-1.8	2' 0"	1

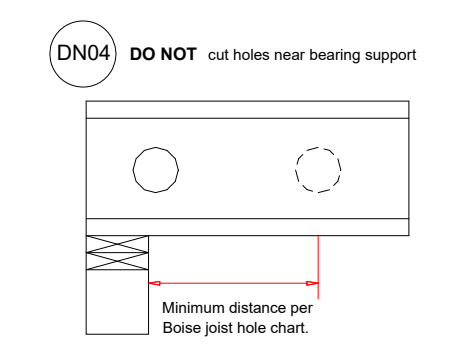
Connector Summary				
PlotID	Qty	Manuf	Product	Flange
H1	1	Simpson	HGUS412	None
H2	1	Simpson	HGUS412	None
H3	8	Simpson	IUS2.06/11.88	None

B1-2 IS STRUCTURALLY ADEQUATE AS 9 1/2" LVL'S. 11 7/8" LVL'S MAY BE USED IN PLACE OF 9 1/2" LVL'S IF DESIRED BY THE BUILDER.

SHOP DRAWING SUBMITTAL REVIEW
This review is for general conformance with plans and specifications only. Approvals are subject to contractor's performance within the confines of the contract documents. Review of dimensions will not serve to relieve the contractor of contractual responsibility for any deviation from the contract requirements.

Approved as noted Note markings
 Field measurements or templates required prior to fabrication Not approved - revise and resubmit

VISTA STRUCTURAL ENGINEERING, LLC
www.vistastructural.com
By: Dennis Heier Date: 08/16/2023



See Boise Specifier Guide For Filler Block Detail And Table In Regard To Double Joist Installation

DESIGN LOAD
Live Load 40 PSF
Dead Load 15 PSF
Total Load 55 PSF

Revisions: BY:

Boise Cascade

NOTE:
ALL MEASUREMENTS TO BE VERIFIED IN THE FIELD.

USER NOTES
This design is provided as a courtesy to the builder and does NOT constitute a complete structural review of the project. Neither Lateral nor Seismic Analysis has been considered. All bearing locations and product usages shall be verified by the builder and engineer of record. This design shall be reviewed, verified, and approved by the builder, engineer of record, and approved by the local building department prior to ordering materials.

Walker Custom Homes
500 NW Main
McGRAY LUMBER
Liberty, Tim Austin, 8167928918

Scale: 1/4" = 1'-0"
DWG: BC FRAMER
File: 23000019
By: Keith Tally
Date: 4/24/2023
Sheet 1 of 1

McGray Lumber
Serving the Professional Builder