
2022



Site Recommendation Book

PANERA BREAD #2406
1410 Ne Douglas St
Lees Summit, MO 64086

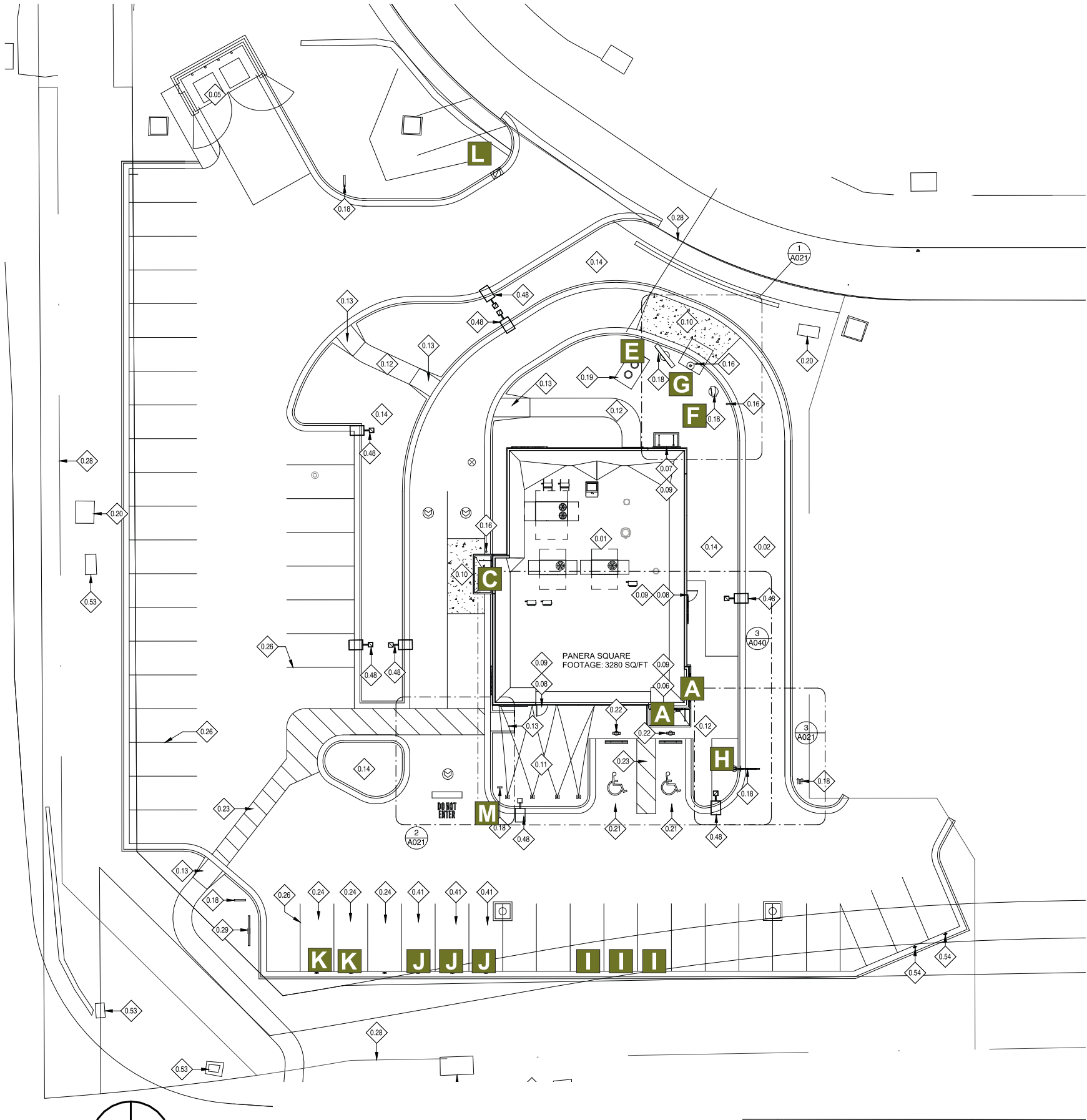
QID: 22-61829

Designer:
Glenn Miller

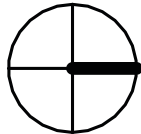
Date:
7-15-22

SITE PLAN

- A 24" CHANNEL LETTERS
- C 49.5" MB LOGO
- E MENU BOARD
- F PREVIEW BOARD
- G CANOPY
- H DT CLEARANCE BAR
- I RPU PARKING SIGN
- J DT PARKING SIGN
- K DELIVERY PARKING SIGN
- L DIRECTIONAL TY/DNE
- M DIRECTIONAL <DT/DT>



1/32" = 1'



HILTONDISPLAYS
125 HILLSIDE DRIVE • GREENVILLE SC 29607
P 800 353 9132 • F 864 242 2204
www.hiltondisplays.com

QID 22-61829

JOB NAME

Panera 2406

LOCATION

1410 Ne Douglas St
Lees Summit MO 64086

CUSTOMER CONTACT

SALESMAN / PM

Sabrina Smith

DESIGNER

Glenn Miller

DWG. DATE

7-15-22

REV. DATE / REVISION

2-16-23

5-22-23

6-28-23

SCALE

FILE

2022/Panera/Locations/
Lees Summit MO/22-61829/
PB Lees Summit MO 22-61829

DESIGN SPECIFICATIONS ACCEPTED BY:

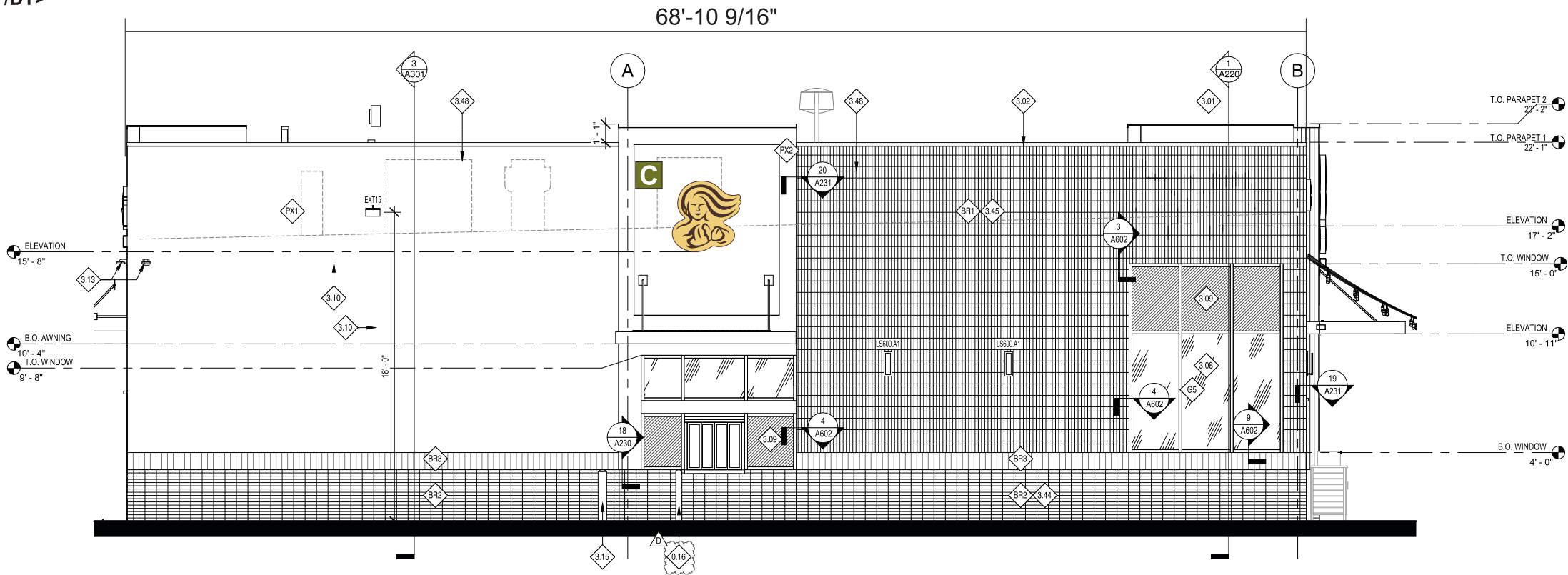
EST:	CLIENT:
SLS/PM:	LANDLORD:

THE INTENT OF THIS DRAWING IS TO SHOW A CONCEPTUAL REPRESENTATION OF THE PROPOSED SIGNAGE. DUE TO VARIATIONS IN PRINTING DEVICES AND SUBSTRATES, THE FINISHED PRODUCT MAY DIFFER SLIGHTLY FROM DRAWING.



ELEVATION

- A 24" CHANNEL LETTERS
- C 49.5" MB LOGO
- E MENU BOARD
- F PREVIEW BOARD
- G CANOPY
- H DT CLEARANCE BAR
- I RPU PARKING SIGN
- J DT PARKING SIGN
- K DELIVERY PARKING SIGN
- L DIRECTIONAL TY/DNE
- M DIRECTIONAL <DT/DT>



SOUTH ELEVATION

1/8" = 1'-0"

HILTONDISPLAYS
125 HILLSIDE DRIVE • GREENVILLE SC 29607
P 800 353 9132 • F 864 242 2204
www.hiltondisplays.com

QID 22-61829
JOB NAME
Panera 2406
LOCATION
1410 Ne Douglas St Lees Summit MO 64086
CUSTOMER CONTACT
SALESMAN / PM
Sabrina Smith
DESIGNER
Glenn Miller
DWG. DATE
7-15-22
REV. DATE / REVISION
2-16-23
5-22-23
6-28-23
SCALE
FILE
2022/Panera/Locations/ Lees Summit MO/22-61829/ PB Lees Summit MO 22-61829

DESIGN SPECIFICATIONS ACCEPTED BY:

EST:	CLIENT:
SLS/PM:	LANDLORD:

THE INTENT OF THIS DRAWING IS TO SHOW A CONCEPTUAL REPRESENTATION OF THE PROPOSED SIGNAGE. DUE TO VARIATIONS IN PRINTING DEVICES AND SUBSTRATES, THE FINISHED PRODUCT MAY DIFFER SLIGHTLY FROM DRAWING.

 Underwriters Laboratories Inc.

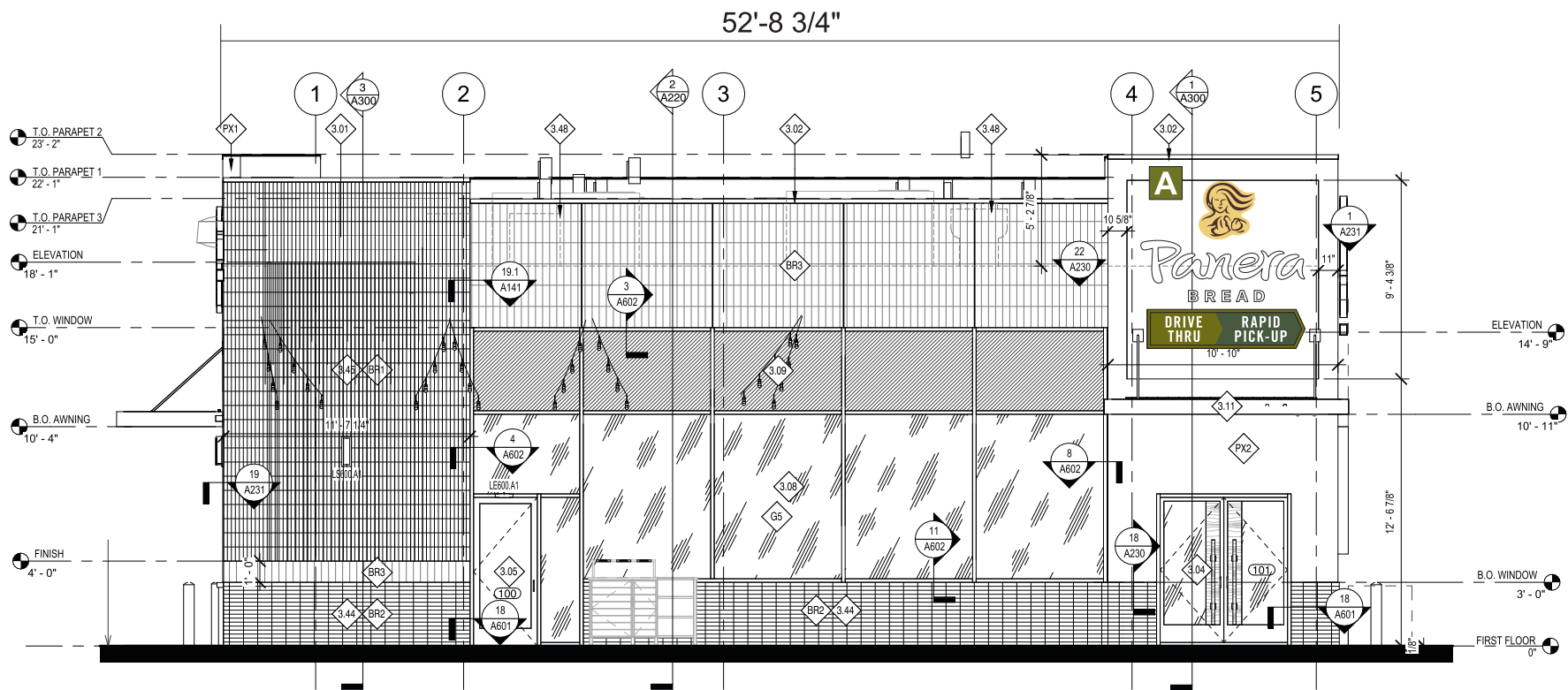
DRY

DAMP

WET

ELEVATION

- A 24" CHANNEL LETTERS
- C 49.5" MB LOGO
- E MENU BOARD
- F PREVIEW BOARD
- G CANOPY
- H DT CLEARANCE BAR
- I RPU PARKING SIGN
- J DT PARKING SIGN
- K DELIVERY PARKING SIGN
- L DIRECTIONAL TY/DNE
- M DIRECTIONAL <DT/DT>



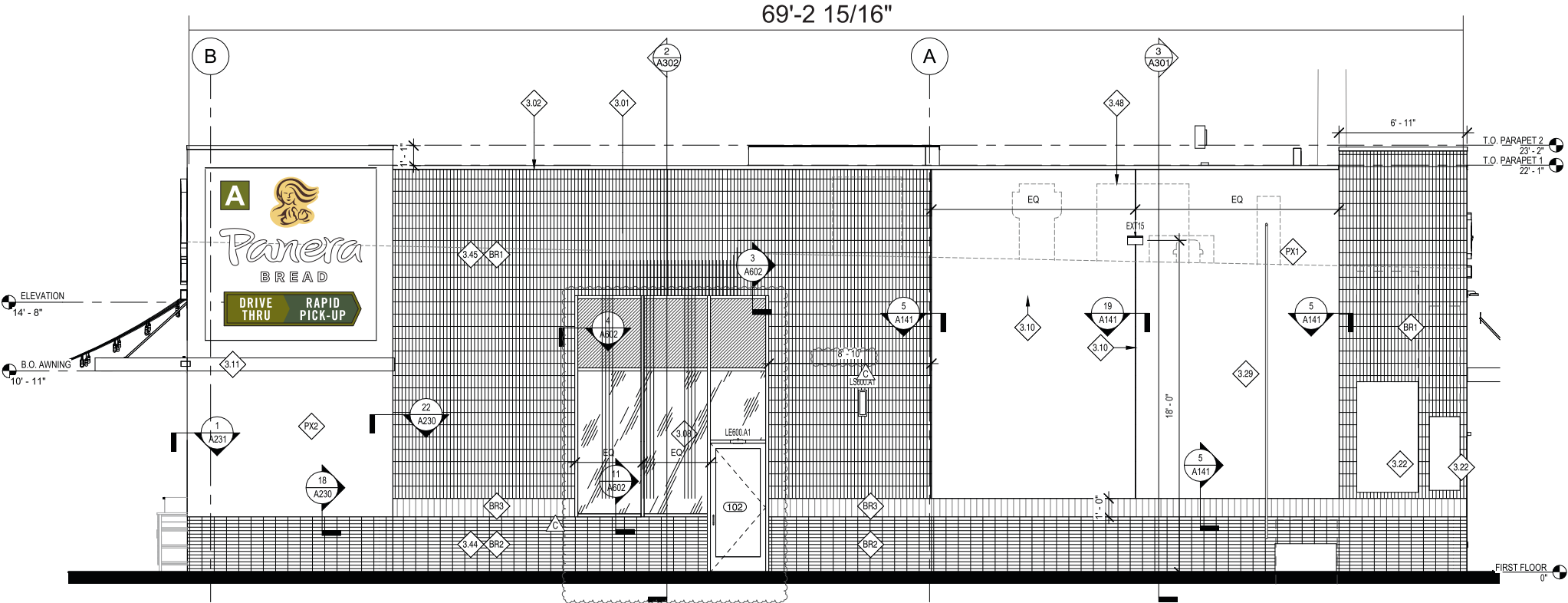
EAST ELEVATION
1/8" = 1'-0"

HILTONDISPLAYS
125 HILLSIDE DRIVE • GREENVILLE SC 29607
P 800 353 9132 • F 864 242 2204
www.hiltondisplays.com

QID 22-61829	
JOB NAME	
Panera 2406	
LOCATION	
1410 Ne Douglas St Lees Summit MO 64086	
CUSTOMER CONTACT	
SALESMAN / PM	
Sabrina Smith	
DESIGNER	
Glenn Miller	
DWG. DATE	
7-15-22	
REV. DATE / REVISION	
2-16-23	
5-22-23	
6-28-23	
SCALE	
FILE	
2022/Panera/Locations/ Lees Summit MO/22-61829/ PB Lees Summit MO 22-61829	
DESIGN SPECIFICATIONS ACCEPTED BY:	
EST:	CLIENT:
SLS/PM:	LANDLORD:
THE INTENT OF THIS DRAWING IS TO SHOW A CONCEPTUAL REPRESENTATION OF THE PROPOSED SIGNAGE. DUE TO VARIATIONS IN PRINTING DEVICES AND SUBSTRATES, THE FINISHED PRODUCT MAY DIFFER SLIGHTLY FROM DRAWING.	
<div><div><div>UL</div><div>Underwriters Laboratories Inc.</div></div><div><div>DRY</div><div>DAMP</div><div>WET</div></div></div>	

ELEVATION

- A 24" CHANNEL LETTERS
- C 49.5" MB LOGO
- E MENU BOARD
- F PREVIEW BOARD
- G CANOPY
- H DT CLEARANCE BAR
- I RPU PARKING SIGN
- J DT PARKING SIGN
- K DELIVERY PARKING SIGN
- L DIRECTIONAL TY/DNE
- M DIRECTIONAL <DT/DT>



NORTH ELEVATION
1/8" = 1'-0"

QID 22-61829

JOB NAME

Panera 2406

LOCATION

1410 Ne Douglas St
Lees Summit MO 64086

CUSTOMER CONTACT

SALESMAN / PM

Sabrina Smith

DESIGNER

Glenn Miller

DWG. DATE

7-15-22

REV. DATE / REVISION

2-16-23

5-22-23

6-28-23

SCALE

FILE

2022/Panera/Locations/
Lees Summit MO/22-61829/
PB Lees Summit MO 22-61829

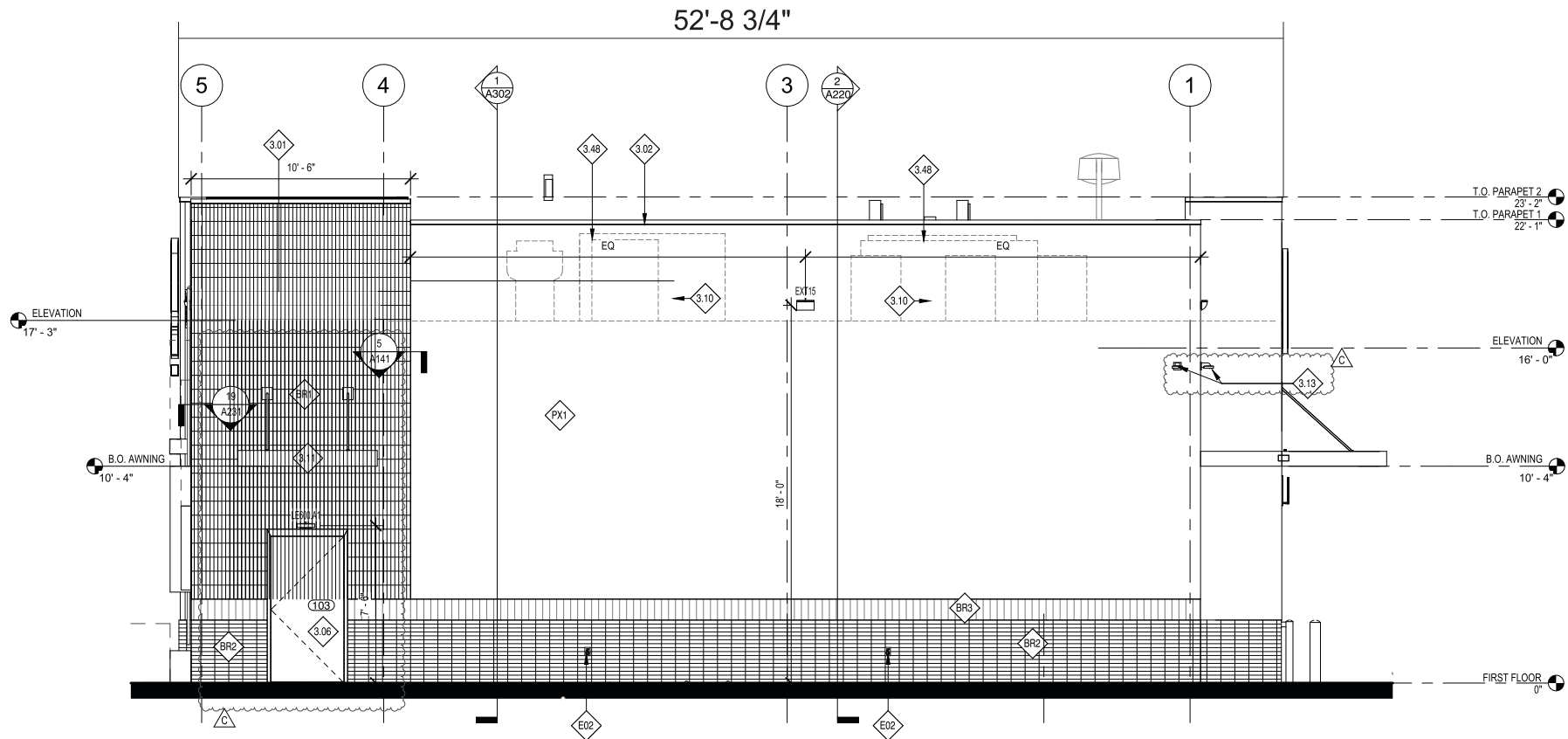
DESIGN SPECIFICATIONS ACCEPTED BY:

EST: CLIENT:



SLS/PM: LANDLORD:

THE INTENT OF THIS DRAWING IS TO SHOW A CONCEPTUAL REPRESENTATION OF THE PROPOSED SIGNAGE. DUE TO VARIATIONS IN PRINTING DEVICES AND SUBSTRATES, THE FINISHED PRODUCT MAY DIFFER SLIGHTLY FROM DRAWING.

- ELEVATION**
- A** 24” CHANNEL LETTERS
 - C** 49.5” MB LOGO
 - E** MENU BOARD
 - F** PREVIEW BOARD
 - G** CANOPY
 - H** DT CLEARANCE BAR
 - I** RPU PARKING SIGN
 - J** DT PARKING SIGN
 - K** DELIVERY PARKING SIGN
 - L** DIRECTIONAL TY/DNE
 - M** DIRECTIONAL <DT/DT>



WEST ELEVATION
1/8" = 1'-0"

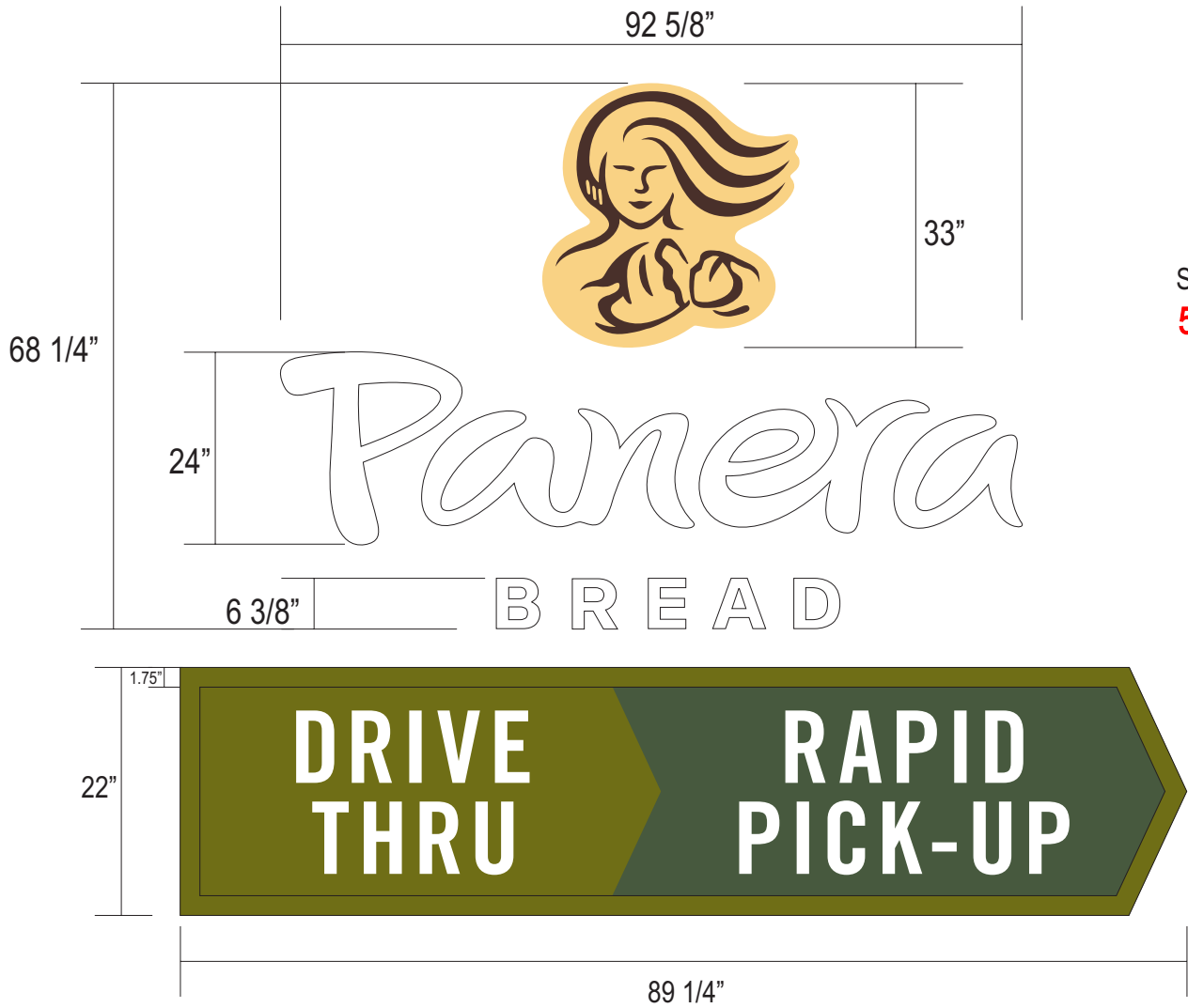
QID 22-61829
JOB NAME
Panera 2406
LOCATION
1410 Ne Douglas St Lees Summit MO 64086
CUSTOMER CONTACT
SALESMAN / PM
Sabrina Smith
DESIGNER
Glenn Miller
DWG. DATE
7-15-22
REV. DATE / REVISION
2-16-23
5-22-23
6-28-23
SCALE
FILE
2022/Panera/Locations/ Lees Summit MO/22-61829/ PB Lees Summit MO 22-61829
DESIGN SPECIFICATIONS ACCEPTED BY:
EST: CLIENT:
SLS/PM: LANDLORD:
THE INTENT OF THIS DRAWING IS TO SHOW A CONCEPTUAL REPRESENTATION OF THE PROPOSED SIGNAGE. DUE TO VARIATIONS IN PRINTING DEVICES AND SUBSTRATES, THE FINISHED PRODUCT MAY DIFFER SLIGHTLY FROM DRAWING.
 Underwriters Laboratories Inc. 

INTERNALLY ILLUMINATED FRONT LIT/HALO LIT CHANNEL LETTERS AND LOGO:

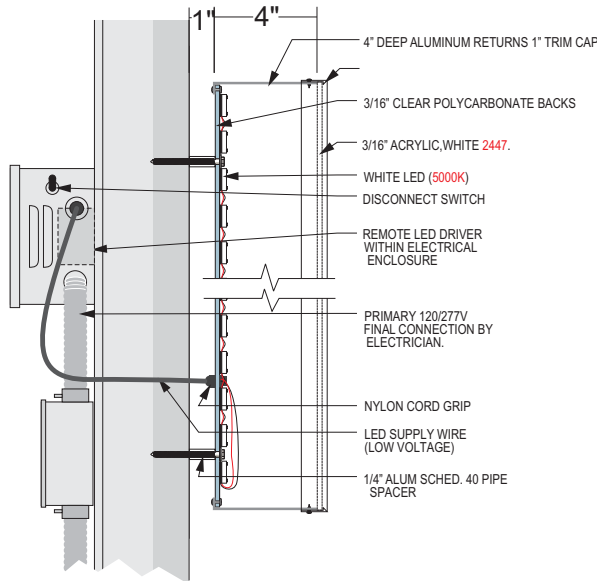
PAN-RCL-S2L-2433-STK-W

Qty. 2

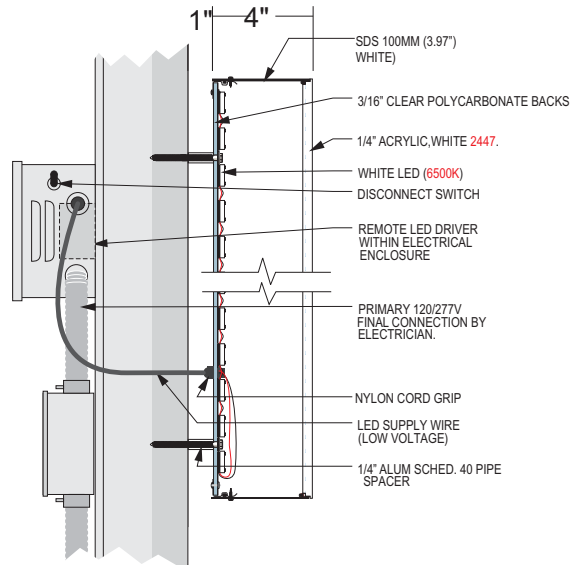
A



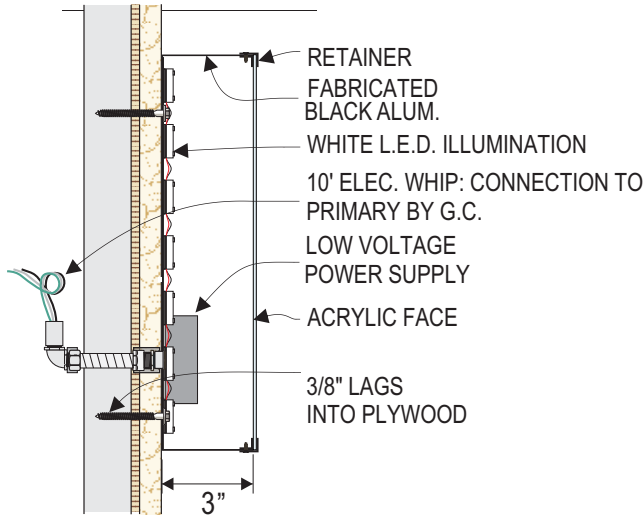
SCALE: 3/4" = 1'-0"
57.53 S/F



TYPICAL (MB LOGO) DETAIL



TYPICAL (LETTER) DETAIL



DRIVE THRU CABINET SIGN SECTION: N.T.S.

“PANERA BREAD” LETTERS (TRIMLESS DESIGN)

INTERNALLY ILLUMINATED FACE LIT/HALO LIT CHANNEL LETTERS

- 2447 WHITE ACRYLIC FACES
- 4IN DEEP RETURNS PAINTED PANTONE 7540C SLATE
- CLEAR POLYCARBONATE BACKS
- 6500K WHT SLOAN “PANERA”
- 6500K WHT SLOAN “BREAD”

INTERNALLY ILLUMINATED "DRIVE THRU" WALL SIGN:

- 3" DEEP RETURN PAINTED PANTONE 2307c
- 2.75" DEEP ALUMINUM CHANNEL RETAINER (1.75" FACE, 1" RETURN) PAINTED TO MATCH PANTONE 2307c
- WHITE ACRYLIC FACE WITH FIRST SURFACE DIGITAL PRINT
 - PANTONE 2307c GREEN BACKGROUND BEHIND DRIVE THRU
 - PANTONE 2410c GREEN BACKGROUND BEHIND RAPID PICK UP
 - WHITE DRIVE THRU COPY AND RAPID PICK UP
- SLOAN 6500K PRISM WHITE LED ILLUMINATION

“MOTHER BREAD LOGO” (TRIM CAP DESIGN)

INTERNALLY ILLUMINATED FACE LIT/HALO LIT CHANNEL LETTERS

- 2447 WHITE ACRYLIC FACES W/DIGITALLY PRINTED GRAPHICS MATCHING 7403 C & 476 C APPLIED 1ST SURFACE
- 1IN TRIM CAP BRONZE
- 4IN DEEP RETURNS PAINTED PANTONE 7540c
- CLEAR POLYCARBONATE BACKS
- 5000K WHT SLOAN

PANTONE 2410 C	PANERA GREEN PANTONE 2307 C C32 M2 Y100 K61 R104 G111 B16 HEX #66BF12	PANERA SLATE PANTONE 7540 C C67 M54 Y46 K40 R75 G70 B54 HEX #484F54	SUN DAPPLE PANTONE 7403 C C5 M15 Y55 K0 R238 G212 B132 HEX #EED484
-------------------	---	---	--

HILTONDISPLAYS
125 HILLSIDE DRIVE • GREENVILLE SC 29607
P 800 353 9132 • F 864 242 2204
www.hiltondisplays.com

QID 22-61829

JOB NAME

Panera 2406

LOCATION

1410 Ne Douglas St
Lees Summit MO 64086

CUSTOMER CONTACT

SALESMAN / PM

Sabrina Smith

DESIGNER

Glenn Miller

DWG. DATE

7-15-22

REV. DATE / REVISION

2-16-23

5-22-23

6-28-23

SCALE

FILE

2022/Panera/Locations/
Lees Summit MO/22-61829/
PB Lees Summit MO 22-61829

DESIGN SPECIFICATIONS ACCEPTED BY:

EST:	CLIENT:
SLS/PM:	LANDLORD:

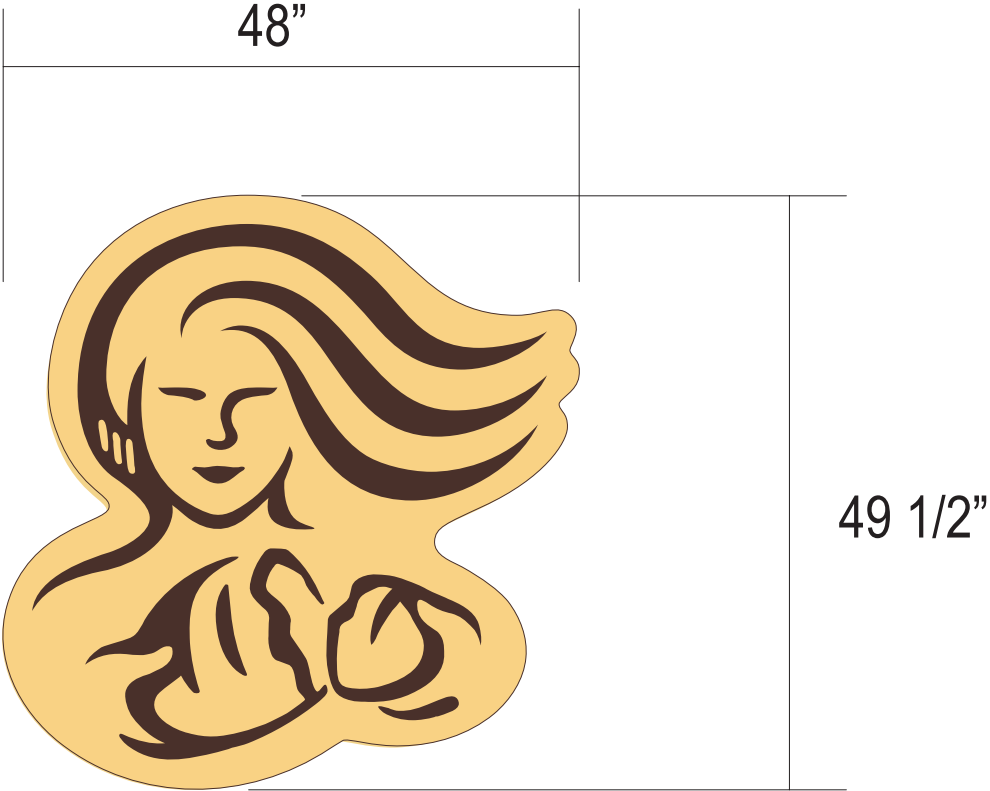
THE INTENT OF THIS DRAWING IS TO SHOW A CONCEPTUAL REPRESENTATION OF THE PROPOSED SIGNAGE. DUE TO VARIATIONS IN PRINTING DEVICES AND SUBSTRATES, THE FINISHED PRODUCT MAY DIFFER SLIGHTLY FROM DRAWING.



INTERNALLY ILLUMINATED FRONT LIT/HALO LIT LOGO:

PAN-RCL-MB-49.5

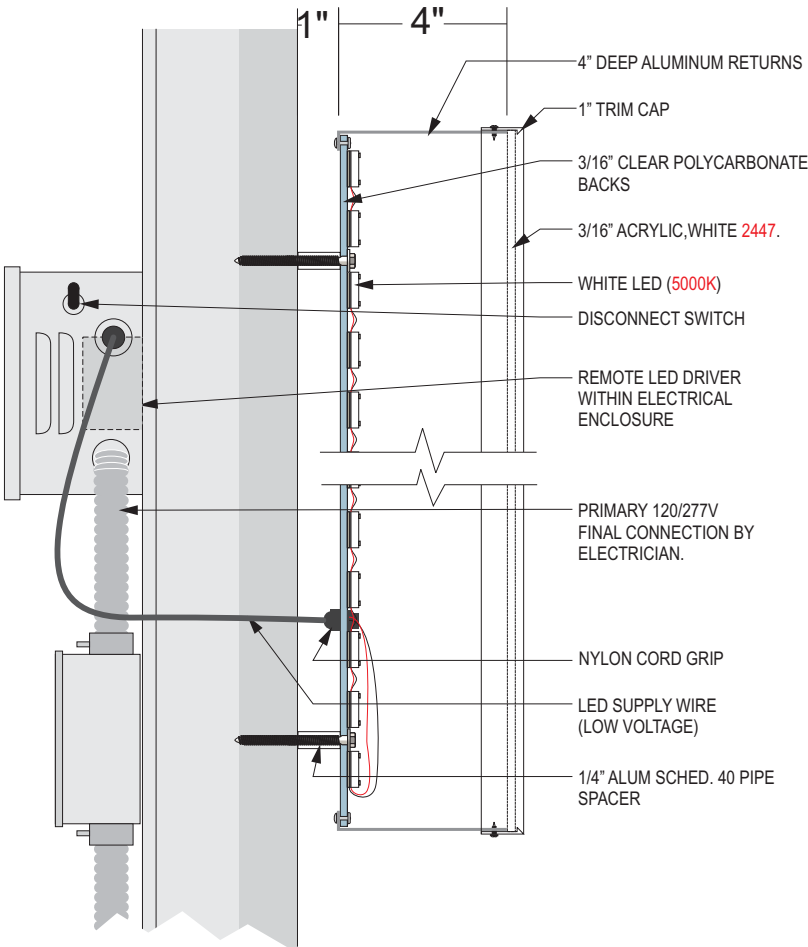
Qty. 1



SCALE: 3/4" = 1'-0"
16.5 S/F

“MOTHER BREAD LOGO” (TRIM CAP DESIGN)

- INTERNALLY ILLUMINATED FACE LIT/HALO LIT CHANNEL LETTERS
- 2447 WHITE ACRYLIC FACES W/DIGITALLY PRINTED GRAPHICS
- MATCHING 7403 C & 476 C APPLIED 1ST SURFACE
- 1IN TRIM CAP BRONZE
- 4IN DEEP RETURNS PAINTED PANTONE 7540c
- CLEAR POLYCARBONATE BACKS
- 5000K WHT SLOAN



TYPICAL (MB LOGO) DETAIL

HILTONDISPLAYS
125 HILLSIDE DRIVE • GREENVILLE SC 29607
P 800 353 9132 • F 864 242 2204
www.hiltondisplays.com

QID 22-61829

JOB NAME

Panera 2406

LOCATION

1410 Ne Douglas St
Lees Summit MO 64086

CUSTOMER CONTACT

SALESMAN / PM

Sabrina Smith

DESIGNER

Glenn Miller

DWG. DATE

7-15-22

REV. DATE / REVISION

2-16-23

5-22-23

6-28-23

SCALE

FILE

2022/Panera/Locations/
Lees Summit MO/22-61829/
PB Lees Summit MO 22-61829

DESIGN SPECIFICATIONS ACCEPTED BY:

EST:	CLIENT:
SLS/PM:	LANDLORD:

THE INTENT OF THIS DRAWING IS TO SHOW A CONCEPTUAL REPRESENTATION OF THE PROPOSED SIGNAGE. DUE TO VARIATIONS IN PRINTING DEVICES AND SUBSTRATES, THE FINISHED PRODUCT MAY DIFFER SLIGHTLY FROM DRAWING.



PANTONE 2410 C	PANERA GREEN PANTONE 2307 C C32 M2 Y100 K61 R104 G111 B18 HEX #686F12	PANERA SLATE PANTONE 7540 C C67 M54 Y46 K40 R75 G79 B84 HEX #4B4F54	SUN DAPPLE PANTONE 7403 C C5 M15 Y55 K0 R238 G212 B132 HEX #EED484
----------------	---	---	--

MENU BOARD
PAN-DTMB-5788-22
Qty. 1
E



PANTONE 2410 C	PANERA GREEN PANTONE 2307 C C32 M2 Y100 K61 R104 G111 B18 HEX #686F12	PANERA SLATE PANTONE 7540 C C67 M54 Y46 K40 R75 G79 B84 HEX #4B4F54	SUN DAPPLE PANTONE 7403 C C5 M15 Y55 K0 R238 G212 B132 HEX #EED484
----------------	---	---	--

HILTONDISPLAYS
125 HILLSIDE DRIVE • GREENVILLE SC 29607
P 800 353 9132 • F 864 242 2204
www.hiltondisplays.com

QID 22-61829

JOB NAME

Panera 2406

LOCATION

1410 Ne Douglas St
Lees Summit MO 64086

CUSTOMER CONTACT

SALESMAN / PM

Sabrina Smith

DESIGNER

Glenn Miller

DWG. DATE

7-15-22

REV. DATE / REVISION

2-16-23

5-22-23

6-28-23

SCALE

FILE

2022/Panera/Locations/
Lees Summit MO/22-61829/
PB Lees Summit MO 22-61829

DESIGN SPECIFICATIONS ACCEPTED BY:

EST:	CLIENT:
SLS/PM:	LANDLORD:

THE INTENT OF THIS DRAWING IS TO SHOW A CONCEPTUAL REPRESENTATION OF THE PROPOSED SIGNAGE. DUE TO VARIATIONS IN PRINTING DEVICES AND SUBSTRATES, THE FINISHED PRODUCT MAY DIFFER SLIGHTLY FROM DRAWING.



PREVIEW MENU BOARD

PAN-DTPB-3656-22

Qty. 1

F



PREVIEW MENU SIGN ELEVATION

SCALE: 3/4" = 1'-0"

DT005.A1

PANTONE 2410 C	PANERA GREEN PANTONE 2307 C C32 M2 Y100 K61 R104 G111 B18 HEX #686F12	PANERA SLATE PANTONE 7540 C C67 M54 Y48 K40 R75 G78 B84 HEX #4B4F54	SUN DAPPLE PANTONE 7403 C C5 M15 Y55 K0 R238 G212 B132 HEX #EED484
----------------	---	---	--

HILTONDISPLAYS

125 HILLSIDE DRIVE • GREENVILLE SC 29607
P 800 353 9132 • F 864 242 2204
www.hiltondisplays.com

QID 22-61829

JOB NAME

Panera 2406

LOCATION

1410 Ne Douglas St
Lees Summit MO 64086

CUSTOMER CONTACT

SALESMAN / PM

Sabrina Smith

DESIGNER

Glenn Miller

DWG. DATE

7-15-22

REV. DATE / REVISION

2-16-23

5-22-23

6-28-23

SCALE

FILE

2022/Panera/Locations/
Lees Summit MO/22-61829/
PB Lees Summit MO 22-61829

DESIGN SPECIFICATIONS ACCEPTED BY:

EST:	CLIENT:
SLS/PM:	LANDLORD:

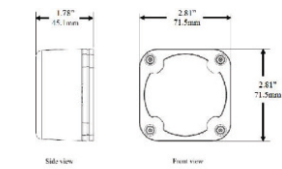
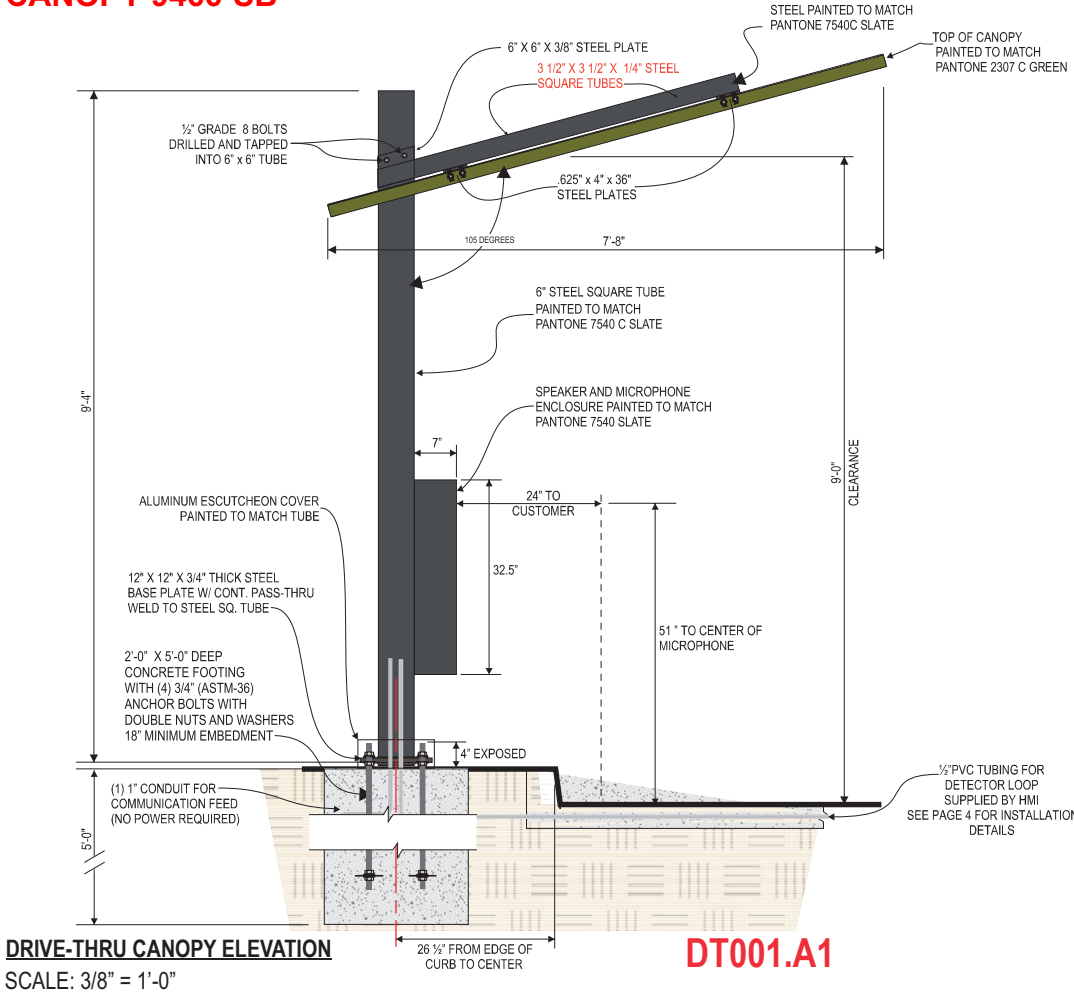
THE INTENT OF THIS DRAWING IS TO SHOW A CONCEPTUAL REPRESENTATION OF THE PROPOSED SIGNAGE. DUE TO VARIATIONS IN PRINTING DEVICES AND SUBSTRATES, THE FINISHED PRODUCT MAY DIFFER SLIGHTLY FROM DRAWING.



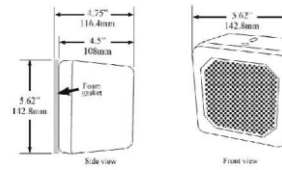
CANOPY
PAN-DT-CANOPY-9466-SB

Qty. 1

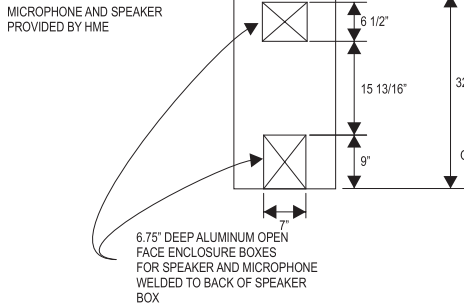
G



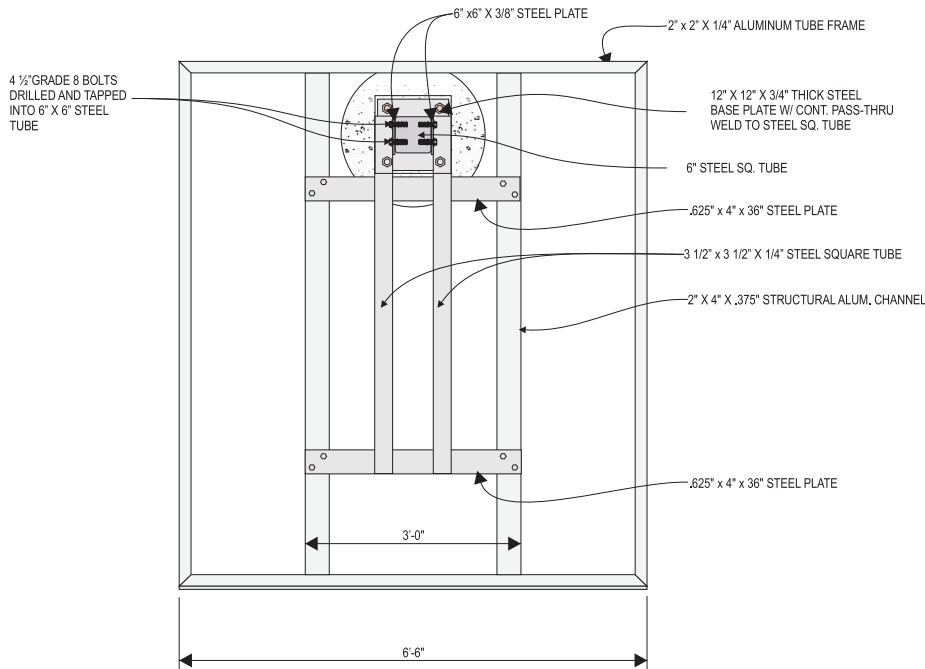
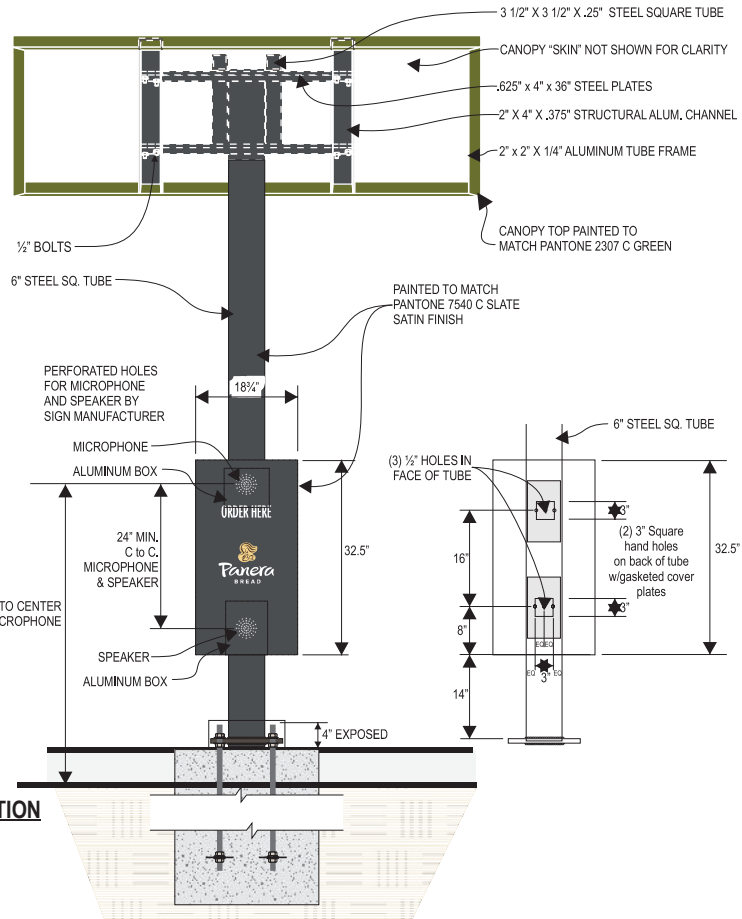
NOTE: A foam enclosure is provided with the DM5. Measurements of the foam are 12.78" x 12.78" x 41.25" (324.8mm x 324.8mm x 1051.4 mm).



MICROPHONE AND SPEAKER PROVIDED BY HMI



DRIVE-THRU CANOPY ELEVATION
SCALE: 3/8" = 1'-0"



PANTONE 2410 C	PANERA GREEN PANTONE 2307 C C32 M2 Y100 K61 R104 G111 B18 HEX #686F12	PANERA SLATE PANTONE 7540 C C67 M54 Y48 K40 R75 G79 B84 HEX #4B4F54	SUN DAPPLE PANTONE 7403 C C5 M15 Y55 K0 R238 G212 B132 HEX #EED484
----------------	---	---	--

HILTONDISPLAYS
125 HILLSIDE DRIVE • GREENVILLE SC 29607
P 800 353 9132 • F 864 242 2204
www.hiltondisplays.com

QID 22-61829

JOB NAME

Panera 2406

LOCATION

1410 Ne Douglas St
Lees Summit MO 64086

CUSTOMER CONTACT

SALESMAN / PM

Sabrina Smith

DESIGNER

Glenn Miller

DWG. DATE

7-15-22

REV. DATE / REVISION

2-16-23

5-22-23

6-28-23

SCALE

FILE

2022/Panera/Locations/
Lees Summit MO/22-61829/
PB Lees Summit MO 22-61829

DESIGN SPECIFICATIONS ACCEPTED BY:

EST:	CLIENT:
SLS/PM:	LANDLORD:

THE INTENT OF THIS DRAWING IS TO SHOW A CONCEPTUAL REPRESENTATION OF THE PROPOSED SIGNAGE. DUE TO VARIATIONS IN PRINTING DEVICES AND SUBSTRATES, THE FINISHED PRODUCT MAY DIFFER SLIGHTLY FROM DRAWING.

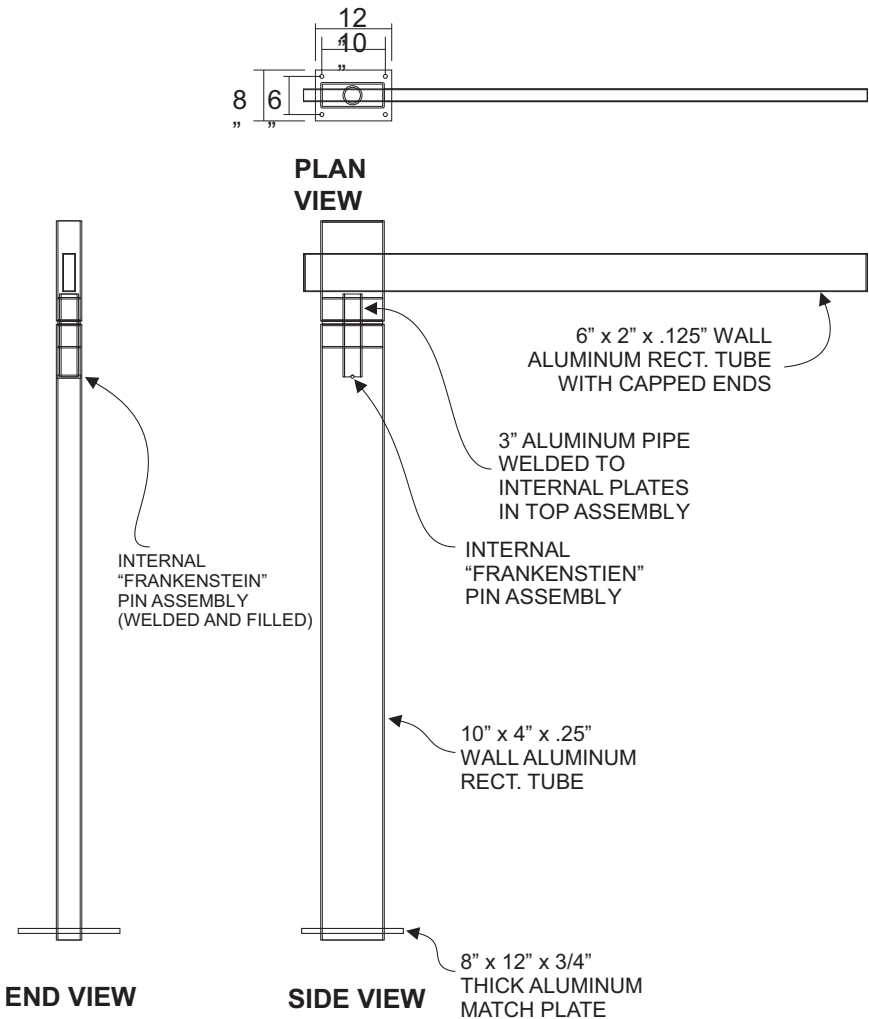
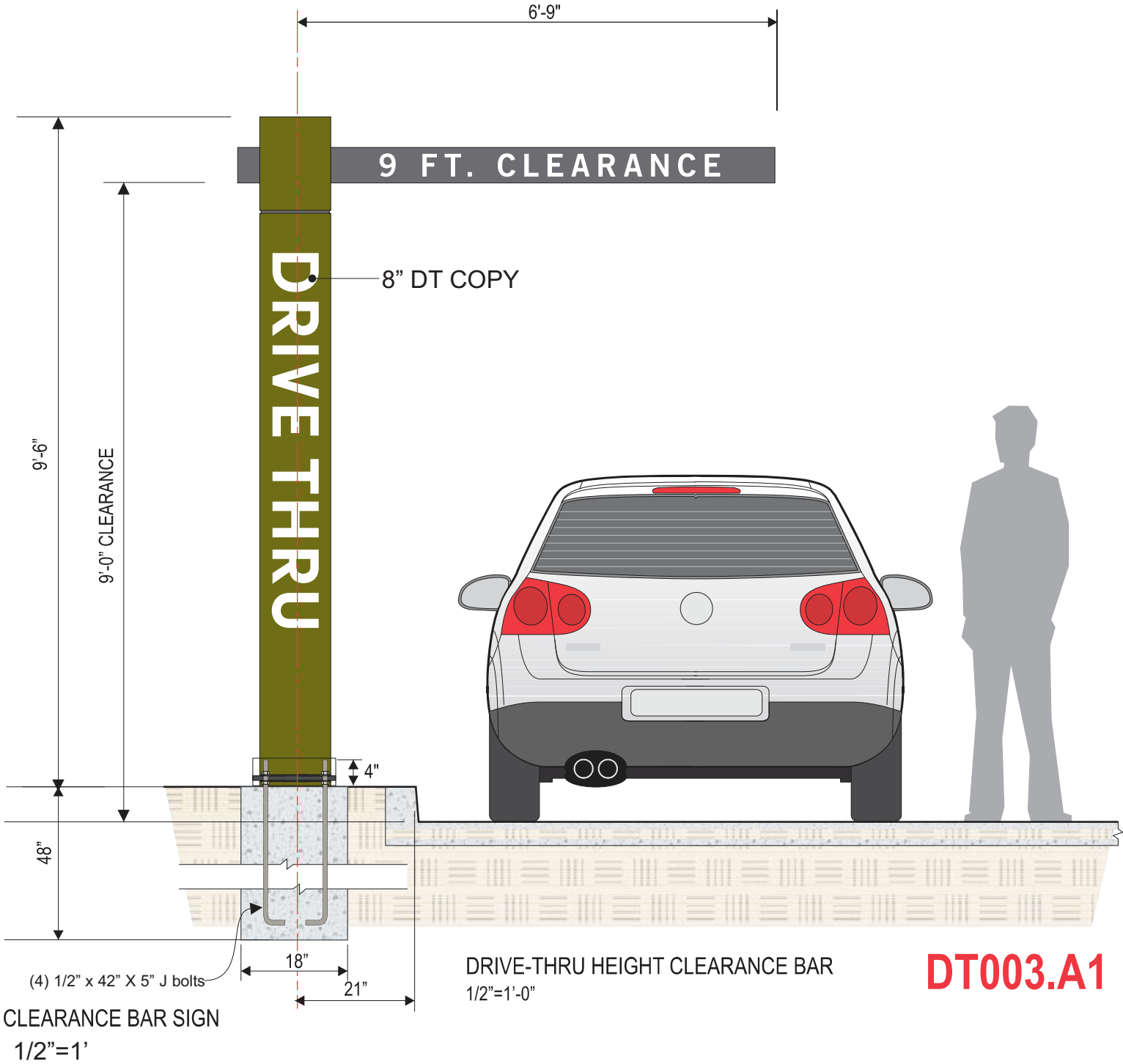


CLEARANCE BAR-DRIVE THRU

PAN-DT-CB-96-C-21

Qty. 1

H



HILTONDISPLAYS
125 HILLSIDE DRIVE • GREENVILLE SC 29607
P 800 353 9132 • F 864 242 2204
www.hiltondisplays.com

QID 22-61829

JOB NAME

Panera 2406

LOCATION

1410 Ne Douglas St
Lees Summit MO 64086

CUSTOMER CONTACT

SALESMAN / PM

Sabrina Smith

DESIGNER

Glenn Miller

DWG. DATE

7-15-22

REV. DATE / REVISION

2-16-23

5-22-23

6-28-23

SCALE

FILE

2022/Panera/Locations/
Lees Summit MO/22-61829/
PB Lees Summit MO 22-61829

DESIGN SPECIFICATIONS ACCEPTED BY:

EST:	CLIENT:
SLS/PM:	LANDLORD:

THE INTENT OF THIS DRAWING IS TO SHOW A CONCEPTUAL REPRESENTATION OF THE PROPOSED SIGNAGE. DUE TO VARIATIONS IN PRINTING DEVICES AND SUBSTRATES, THE FINISHED PRODUCT MAY DIFFER SLIGHTLY FROM DRAWING.

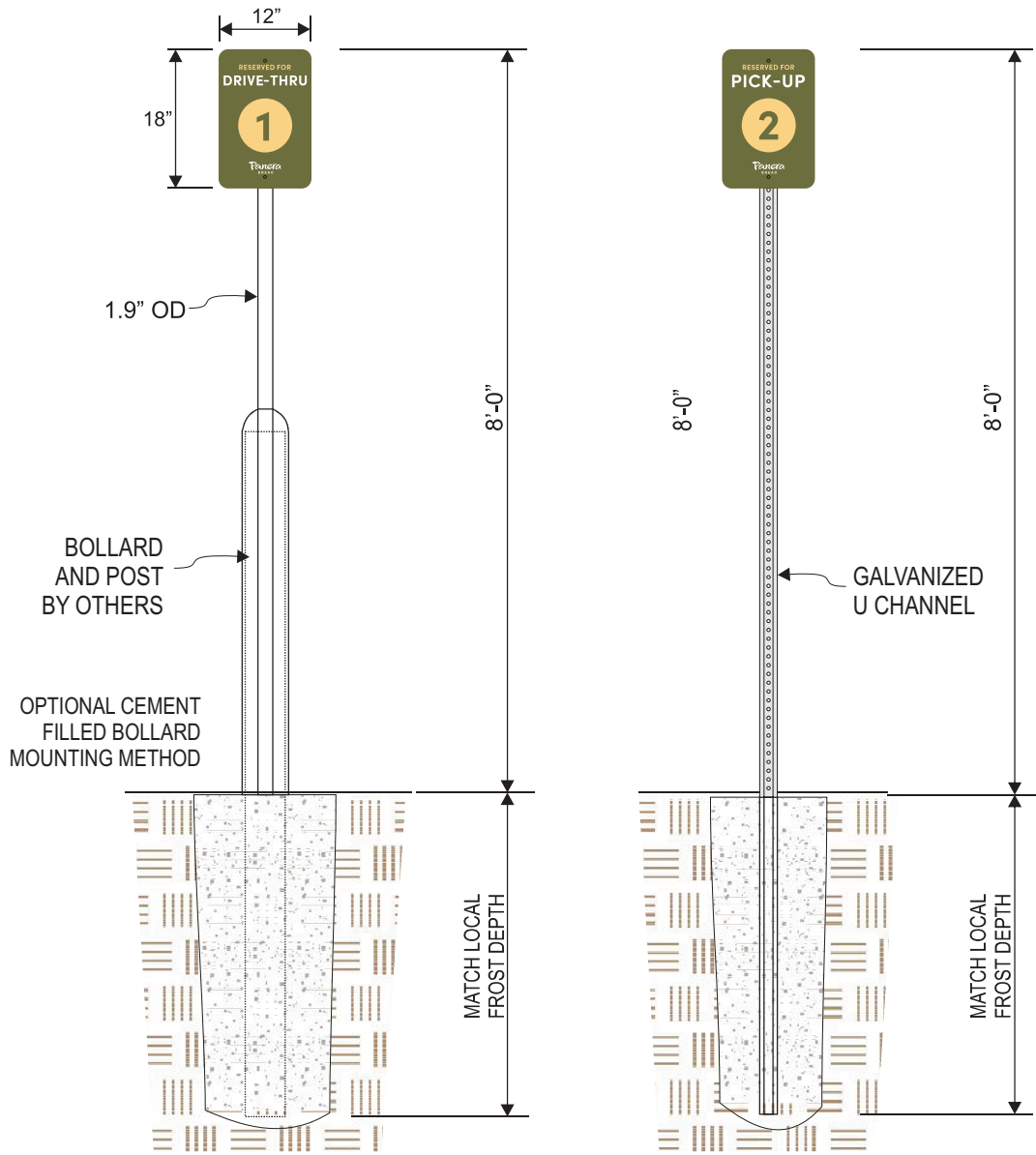


PANERA GREEN
PANTONE 2307 C
C32 M2 Y100 K61
R104 G111 B18
HEX #686F12

PANERA SLATE
PANTONE 7540 C
C67 M54 Y46 K40
R75 G79 B84
HEX #4B4F54

DRIVE THRU / PICK UP / DELIVERY DRIVER PANELS

Qty. 8 TOTAL



SCALE: 1/2" = 1'- 0"
(3) S/F SIGN REQUIRED

SCALE: 1/2" = 1'- 0"
(1) S/F SIGN REQUIRED

SPECIFICATIONS

- Bollard Cover:**
Dome-Top - Lo-Density Polyethylene
Thermoplastic
1/4" Nominal Wall Thickness
Refer to architectural drawings for color finish
- Bollard Pipe:**
6" schedule 40 steel pipe

- Sign Post Material:**
1.66" O.D. 14 Gauge Sign Post,
Hi-Density Polyethylene Thermoplastic Silver finish
1.90" O.D. 1/8" Nominal Wall Thickness
w/Ultra-Violet and Anti-Static Additives
Plastic Cap
Standard 3/8" Holes

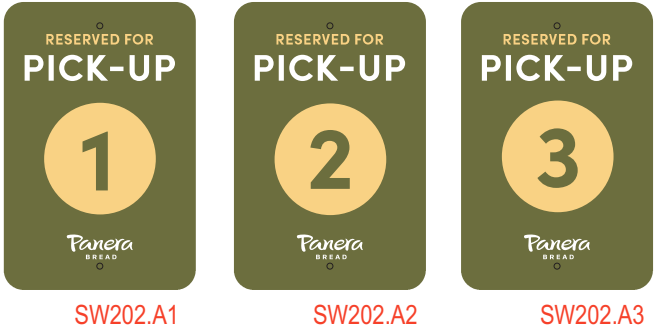
PANTONE 2410 C

PANERA GREEN
PANTONE 2307 C
C32 M2 Y100 K61
R104 G111 B18
HEX #686F12

PANERA SLATE
PANTONE 7540 C
C67 M54 Y46 K40
R75 G79 B84
HEX #4B4F54

SUN DAPPLE
PANTONE 7403 C
C5 M15 Y55 K0
R238 G212 B132
HEX #EED484

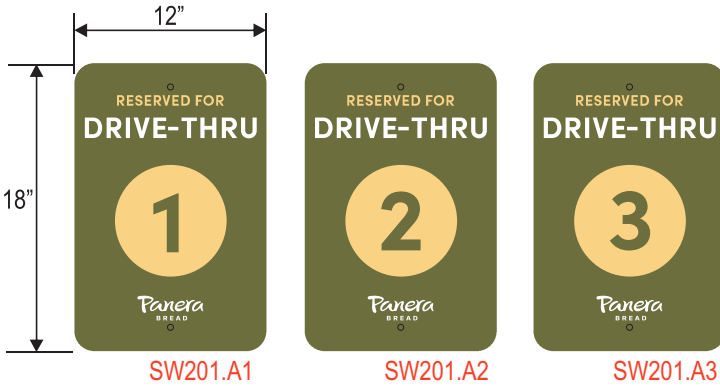
I PAN-1812-RPU



NOTE: 1 & 2 only used
at non Drive thru café

SCALE: 1" = 1'- 0"
(3) REQUIRED

J PAN-1812-RFDT



SCALE: 1" = 1'- 0"
(3) REQUIRED

K PAN-1812-RFDD



SCALE: 1" = 1'- 0"
(2) REQUIRED

NOTE: Custom as of 2-16-23

SINGLE-SIDED TRAFFIC CONTROL SIGNS:

- WHITE .080 ALUMINUM PANELS (DO NOT PRE-DRILL HOLES)
- REFLECTIVE, DIGITALLY PRINTED VINYL GRAPHICS WITH CLEAR OVERLAMINATE
- 10' HEAVY DUTY U-IRON SUPPORT POSTS
- FREE FORMED CONCRETE FOOTINGS

HILTONDISPLAYS

125 HILLSIDE DRIVE • GREENVILLE SC 29607
P 800 353 9132 • F 864 242 2204
www.hiltondisplays.com

QID 22-61829

JOB NAME

Panera 2406

LOCATION

1410 Ne Douglas St
Lees Summit MO 64086

CUSTOMER CONTACT

SALESMAN / PM

Sabrina Smith

DESIGNER

Glenn Miller

DWG. DATE

7-15-22

REV. DATE / REVISION

2-16-23

5-22-23

6-28-23

SCALE

FILE

2022/Panera/Locations/
Lees Summit MO/22-61829/
PB Lees Summit MO 22-61829

DESIGN SPECIFICATIONS ACCEPTED BY:

EST:	CLIENT:
SLS/PM:	LANDLORD:

THE INTENT OF THIS DRAWING IS TO SHOW A CONCEPTUAL REPRESENTATION OF THE PROPOSED SIGNAGE. DUE TO VARIATIONS IN PRINTING DEVICES AND SUBSTRATES, THE FINISHED PRODUCT MAY DIFFER SLIGHTLY FROM DRAWING.

UL

Underwriters
Laboratories Inc.

DRY

DAMP

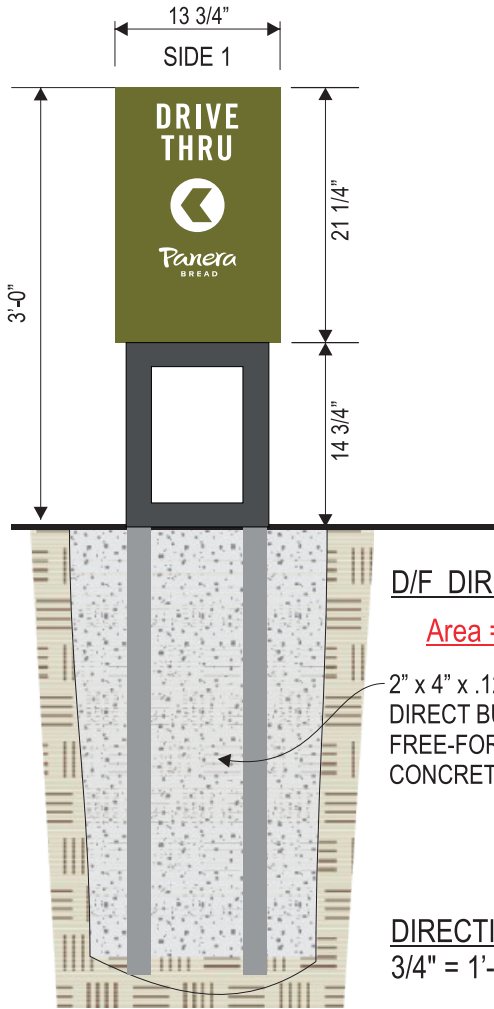
WET

NON-ILLUMINATED DIRECTIONAL SIGNS:

36" DT DIRECTIONAL
PAN-D3613.75-DF-DT-NIL-OB

Qty. 1

M



SW212.B1

36" TY/EO DIRECTIONAL
PAN-D3613.75-DF-EO/TY-NIL-OB

Qty. 1

L



SW212.E1

NON ILLUMINATED DIRECTIONAL SIGNS:

- 4" DEEP ALUM. PANEL CONSTRUCTION PAINTED TO MATCH PANTONE 2307 C (STAIN FINISH)
- .090 ALUMINUM FACES
- DIGITALLY PRINTED GRAPHICS ON REFLECTIVE PSV (VINYL)
- COLORS AS SHOWN: WHITE & PMS 7403U PEACH & PANTONE 2410 C
- PANTONE 7540 SHROUD WITH 2" x 2" x 1/8" WALL ALUM. SQ. TUBE POSTS
- DIRECT BURIAL IN FREE-FORMED CONCRETE FOOTING

PANTONE 2410 C	PANERA GREEN PANTONE 2307 C C32 M2 Y100 K61 R104 G111 B18 HEX #686F12	PANERA SLATE PANTONE 7540 C C67 M54 Y46 K40 R75 G79 B84 HEX #4B4F54	SUN DAPPLE PANTONE 7403 C C5 M15 Y55 K0 R238 G212 B132 HEX #EED484
----------------	---	---	--

HILTONDISPLAYS
125 HILLSIDE DRIVE • GREENVILLE SC 29607
P 800 353 9132 • F 864 242 2204
www.hiltondisplays.com

QID 22-61829

JOB NAME

Panera 2406

LOCATION

1410 Ne Douglas St
Lees Summit MO 64086

CUSTOMER CONTACT

SALESMAN / PM

Sabrina Smith

DESIGNER

Glenn Miller

DWG. DATE

7-15-22

REV. DATE / REVISION

2-16-23

5-22-23

6-28-23

SCALE

FILE

2022/Panera/Locations/
Lees Summit MO/22-61829/
PB Lees Summit MO 22-61829

DESIGN SPECIFICATIONS ACCEPTED BY:

EST:	CLIENT:
SLS/PM:	LANDLORD:

THE INTENT OF THIS DRAWING IS TO SHOW A CONCEPTUAL REPRESENTATION OF THE PROPOSED SIGNAGE. DUE TO VARIATIONS IN PRINTING DEVICES AND SUBSTRATES, THE FINISHED PRODUCT MAY DIFFER SLIGHTLY FROM DRAWING.

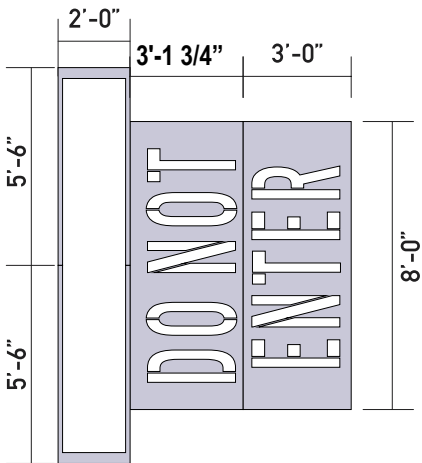
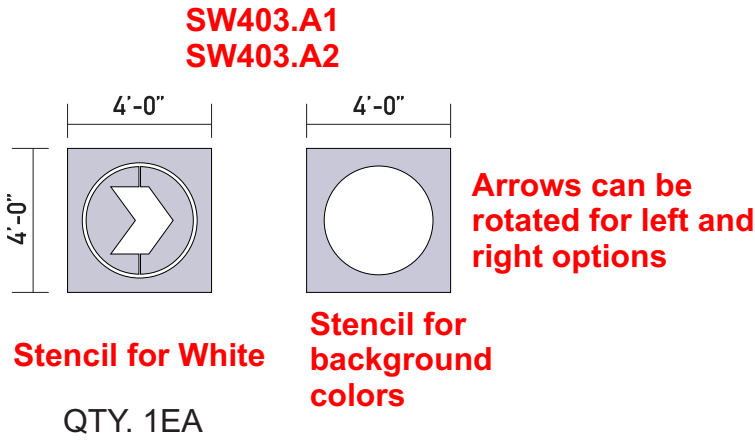


DRIVE -THRU MARKING TEMPLATES

PAN-22-61829-24

HD IS RESPONSIBLE FOR TEMPLATES ONLY

* SIZES ARE SITE SPECIFIC AND MAY VARY PER LOCATION



SW406.A1

SW406.A1

SW406.A1



SCALE: 3/16"=1'-0"

HILTONDISPLAYS

125 HILLSIDE DRIVE • GREENVILLE SC 29607
P 800 353 9132 • F 864 242 2204
www.hiltondisplays.com

QID 22-61829

JOB NAME

Panera 2406

LOCATION

1410 Ne Douglas St
Lees Summit MO 64086

CUSTOMER CONTACT

SALESMAN / PM

Sabrina Smith

DESIGNER

Glenn Miller

DWG. DATE

7-15-22

REV. DATE / REVISION

2-16-23

5-22-23

6-28-23

SCALE

FILE

2022/Panera/Locations/
Lees Summit MO/22-61829/
PB Lees Summit MO 22-61829

DESIGN SPECIFICATIONS ACCEPTED BY:

EST:	CLIENT:
SLS/PM:	LANDLORD:

THE INTENT OF THIS DRAWING IS TO SHOW A CONCEPTUAL REPRESENTATION OF THE PROPOSED SIGNAGE. DUE TO VARIATIONS IN PRINTING DEVICES AND SUBSTRATES, THE FINISHED PRODUCT MAY DIFFER SLIGHTLY FROM DRAWING.

