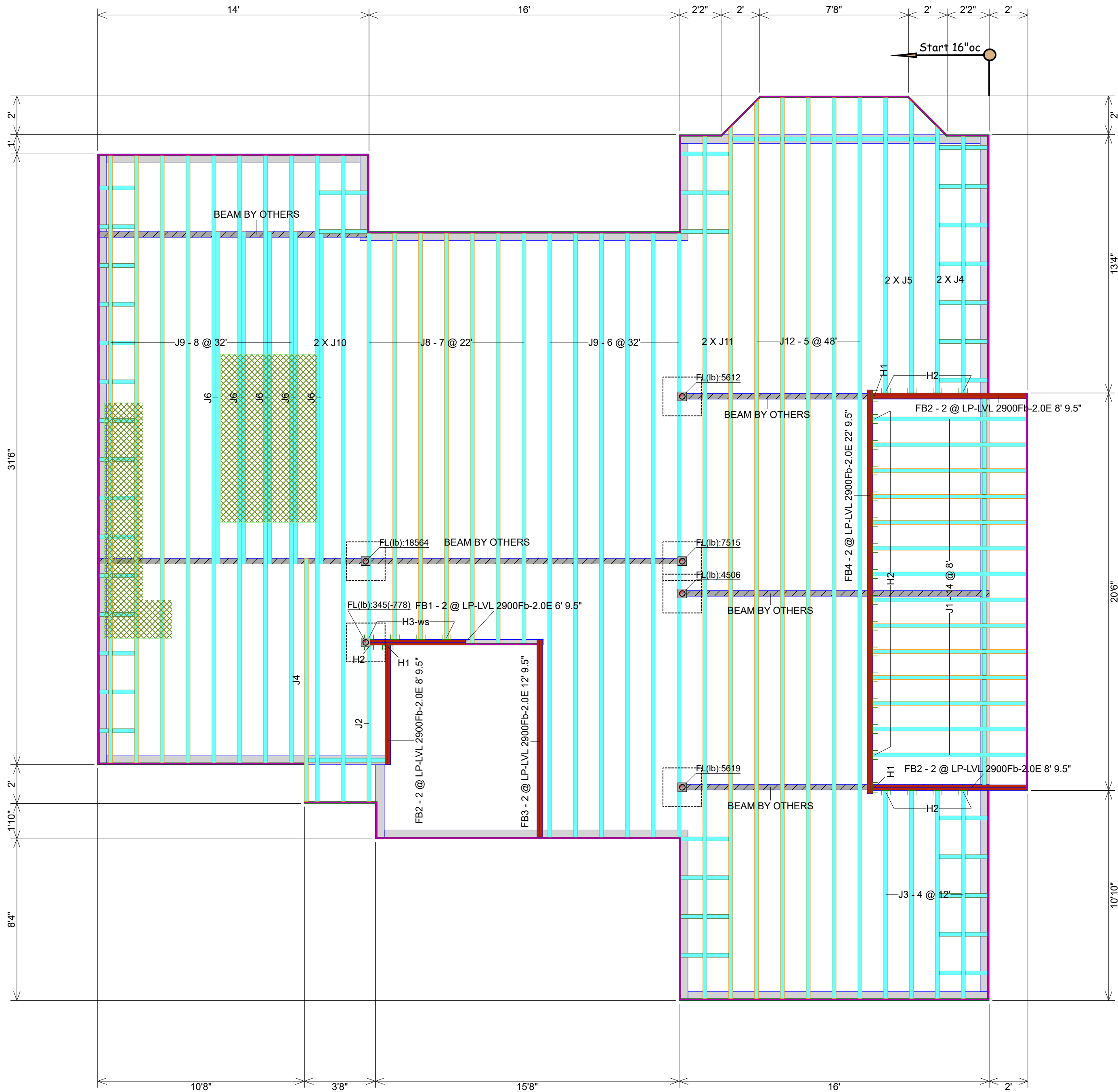


RELEASE FOR CONSTRUCTION
AS NOTED ON PLANS REVIEW
DEVELOPMENT SERVICES
LEE'S SUMMIT, MISSOURI
08/07/2023 4:20:13



- ☒ Conforms to Design Concept
- ☐ Conforms to Design Concept with Revisions Noted
- ☐ Non-Conforming; Revise and Resubmit

THIS SHOP DRAWING HAS BEEN REVIEWED FOR GENERAL CONFORMANCE WITH DESIGN CONCEPT ONLY AND DOES NOT RELIEVE THE FABRICATOR, VENDOR, OR ORIGINAL DESIGN ENGINEER OF RESPONSIBILITY FOR CONFORMANCE WITH DESIGN DRAWINGS, SPECIFICATIONS, AND APPLICABLE CODES, ALL OF WHICH HAVE PRIORITY OVER THIS SHOPDRAWING.

By: *[Signature]* Date: *4/5/23*
R.E.O. ENGINEERING, P.C.

GENERAL NOTES

1. FLOOR JOISTS TO BE 11-7/8" LPI20 PLUS @ 16" O.C. TYP. UNLESS OTHERWISE NOTED
2. ALL BLOCKING PER STRUCTURAL PLAN
3. LOADING TO BE 40 PSF LL - 15 PSF DL

AMERHART

400 MARSHVIEW DRIVE
SUN PRAIRIE, WI 53590
1-800-879-7123
1-608-834-2253

ADDITIONAL NOTES

1. ALWAYS READ PRODUCT BROCHURE BEFORE INSTALLATION OF EWP PRODUCTS.
2. REFER TO HOLE CHARTS PRIOR TO DRILLING PRODUCT.
3. THIS DOCUMENT IS INTENDED SOLEY AS A PLACEMENT PLAN. IT IS TO BE REVIEWED BY THE ENGINEER OF RECORD AND MUST MEET HIS/HER APPROVAL PRIOR TO INSTALLATION OF OUR PRODUCT.
4. THIS DOCUMENT IS NOT TO BE USED AS A REPLACEMENT FOR YOUR ORIGINAL STRUCTURAL PLANS.
5. LAYOUT, QUANTITY AND LENGTH TO BE VERIFIED BY CONTRACTOR.
6. IF WALLS ARE SPECIFIED IN THIS QUOTE, CONTRACTOR MUST VERIFY ALL DIMENSIONS AND ROUGH OPENING SIZES PRIOR TO CONSTRUCTION OF WALL. ROUGH OPENING SIZES ARE ESTIMATES ONLY. TALL WALL IS DESIGNED FOR VERTICAL LOADS AND DIRECT WIND LOADS ONLY. INLINE LATERAL BRACING OF THE BUILDING DIAPHRAGM IS TO BE ACCOUNTED FOR BY THE BUILDING DESIGNER/ENGINEER.

Ground Floor

Label	Description	Width	Depth	Qty	Plies	Pcs	Length
J12	LPI 20 Plus	2.5	9.5			5	48-0-0
J11	LPI 20 Plus	2.5	9.5			2	46-0-0
J10	LPI 20 Plus	2.5	9.5			2	34-0-0
J9	LPI 20 Plus	2.5	9.5			14	32-0-0
J8	LPI 20 Plus	2.5	9.5			7	22-0-0
J6	LPI 20 Plus	2.5	9.5			5	18-0-0
J5	LPI 20 Plus	2.5	9.5			2	16-0-0
J4	LPI 20 Plus	2.5	9.5			3	14-0-0
J3	LPI 20 Plus	2.5	9.5			4	12-0-0
J2	LPI 20 Plus	2.5	9.5			1	10-0-0
J1	LPI 20 Plus	2.5	9.5			14	8-0-0

Blocking

Label	Description	Width	Depth	Qty	Plies	Pcs	Length
BLK1	LPI 20 Plus	2.5	9.5			99	2-0-0

Rim Board

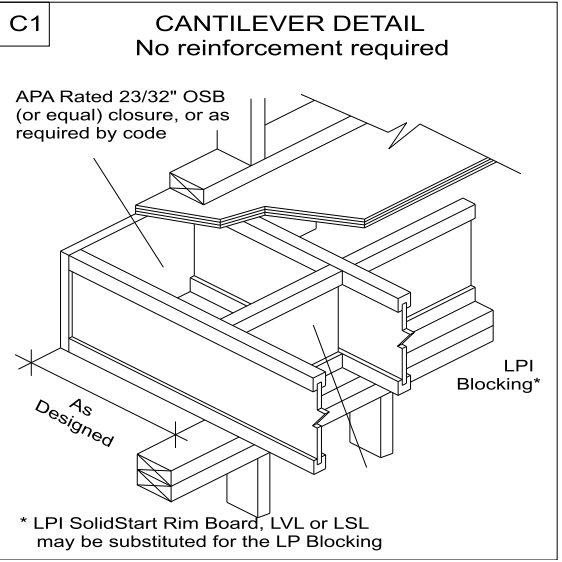
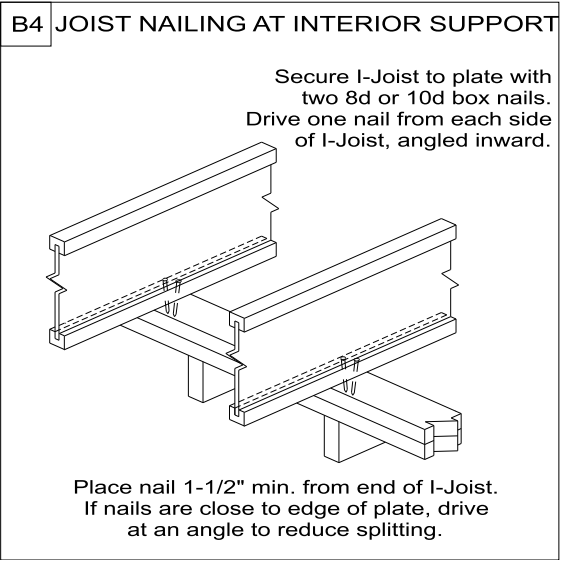
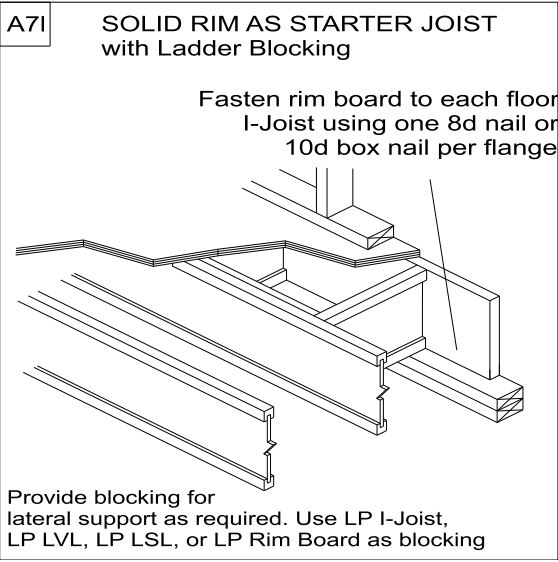
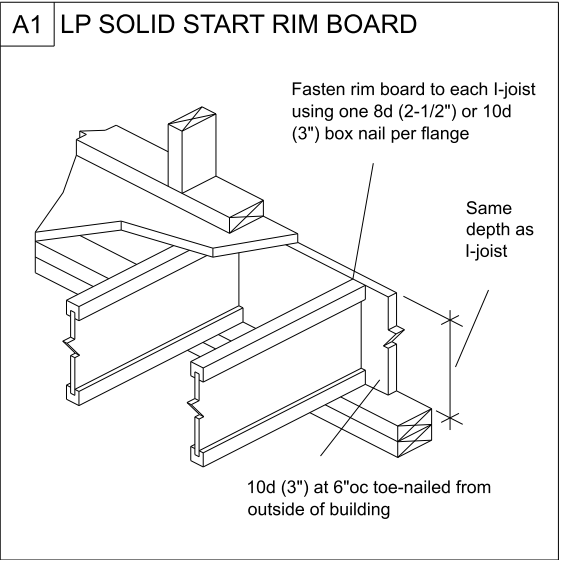
Label	Description	Width	Depth	Qty	Plies	Pcs	Length
R1	LP APA Rated OSB 1.125 X 9.5	1.125	9.5			16	12-0-0
R2	LP APA Rated OSB 1.125 X 11.875	1.125	11.875			1	12-0-0

LVL/LSL

Label	Description	Width	Depth	Qty	Plies	Pcs	Length
FB4	LP-LVL 2900Fb-2.0E	1.75	9.5	1	2	2	22-0-0
FB3	LP-LVL 2900Fb-2.0E	1.75	9.5	1	2	2	12-0-0
FB2	LP-LVL 2900Fb-2.0E	1.75	9.5	3	2	6	8-0-0
FB1	LP-LVL 2900Fb-2.0E	1.75	9.5	1	2	2	6-0-0

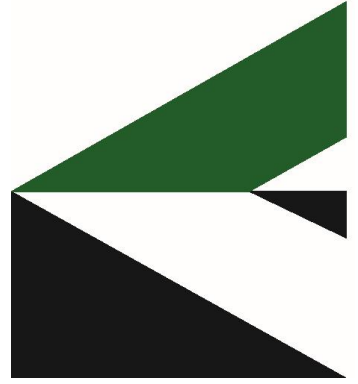
Hanger

		Beam/Girder			Supported Member	
Label	Pcs	Description	Skew	Slope	fasteners	fasteners
H1	3	HHUS410			30 16d	10 16d
H2	23	IUS2.56/9.5 (Min)			8 10d	
H3	4	MIU2.56/9 (Max)			16 16d	6 10dx1 1/2



Layout Name
WW39 - 1609 SW 27TH ST

Amerhart



Project	TL22168ATH
Created	December 14, 2022
Designer	Thomas Hamrick
Layout Name	WW39 - 1609 SW 27TH ST
Dealer	TEAGUE LUMBER
Revised	December 14, 2022