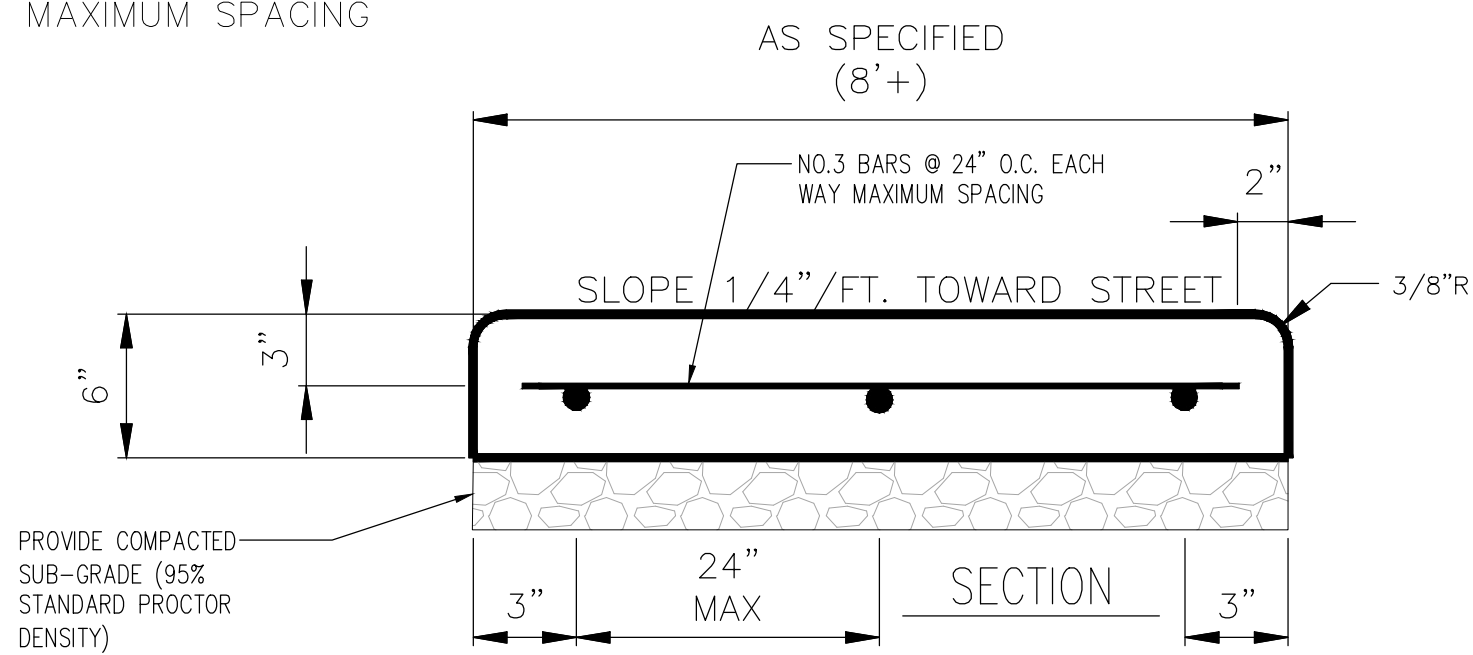


NO. 3 BARS 24" O.C. EACH WAY  
MAXIMUM SPACING

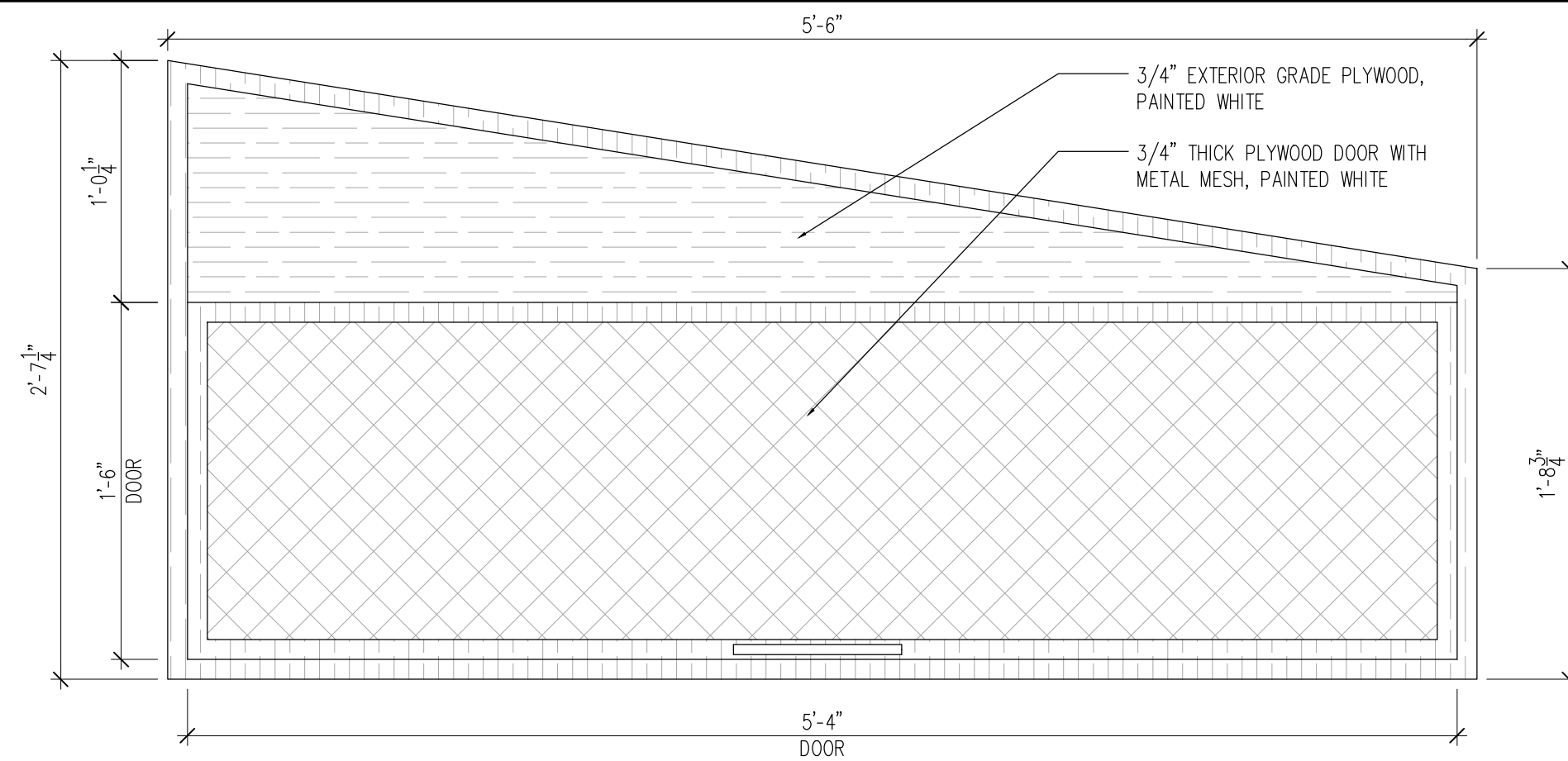


#### GENERAL NOTES:

- 1/2" EXPANSION JOINTS SHALL BE SPACED AT 60' MAXIMUM INTERVALS, OR AS OTHERWISE SPECIFIED. JOINTS SHALL HAVE FIVE (5) #3 2' SLIP DOWELS WITH END CAPS AT EQUAL SPACING.
- TOOL GROOVE EVERY 8' ON 8' WALKS.
- SIDEWALKS SHALL BE CLASS "A" CONCRETE.
- WHEN CONCRETE WALK IS ADJACENT TO EXISTING CONCRETE, DEPTH OF BITUMINOUS EXPANSION JOINT FILLER SHALL BE SUFFICIENT TO PREVENT CONCRETE TO CONCRETE CONTACT BETWEEN WALK AND CONCRETE. WHEN SIDEWALK IS LOCATED AT THE BACK OF CURB THE NO. 3 REBAR AT 24" O.C. FOR THE SIDEWALK SHOULD EXTEND TO A DEPTH OF APPROXIMATELY 3" INTO THE BACK OF THE CURB AND SHOULD BE ANCHORED IN PLACE WITH EPOXY RESIN.
- SIDEWALK SUBGRADE SHALL BE COMPACTED TO MINIMUM 95% STANDARD PROCTOR DENSITY.
- A MAXIMUM OF 1" OF SAND MAY BE USED FOR LEVEL UP ONLY.
- SEAL ALL JOINTS WITH RUBBERIZED SEALANT.

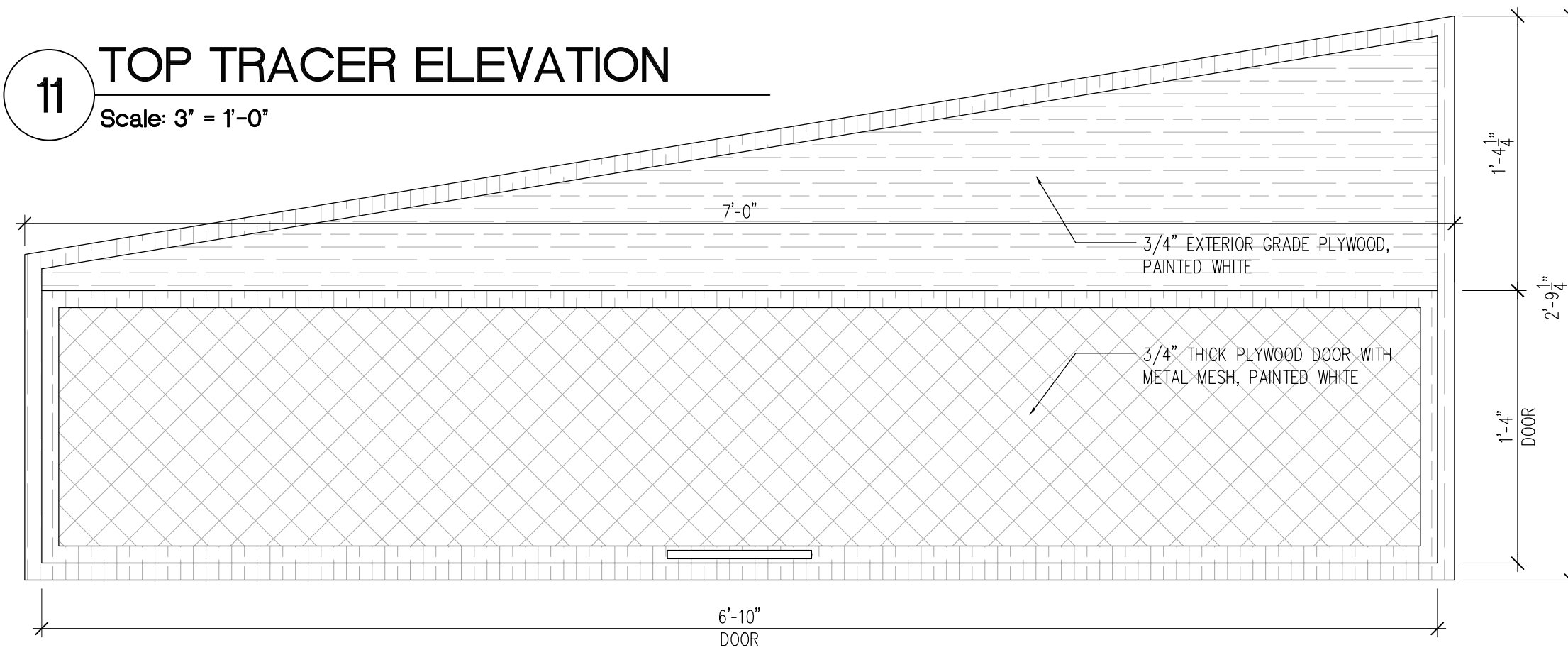
## 8 CONCRETE PAVEMENT/WALKWAY DETAIL

SCALE: 15' = 1'-0"



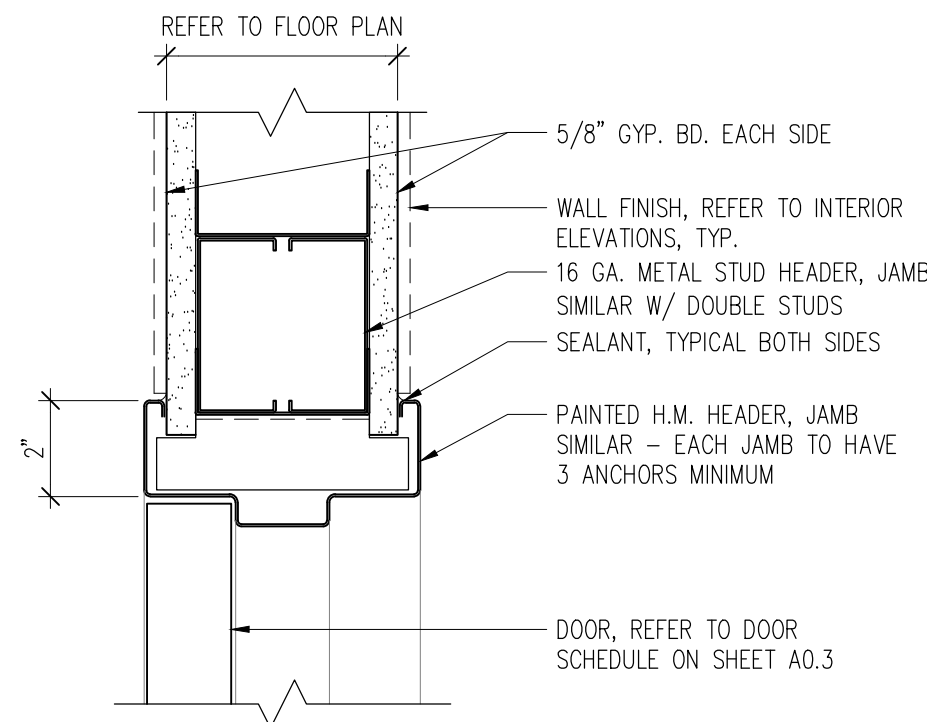
## 11 TOP TRACER ELEVATION

Scale: 3' = 1'-0"



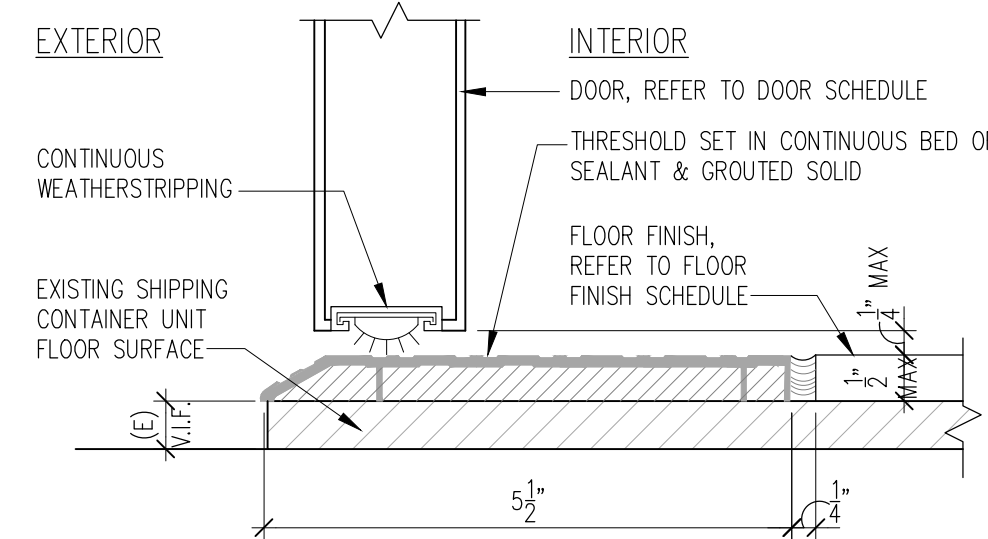
## 10 TOP TRACER ELEVATION

Scale: 3' = 1'-0"



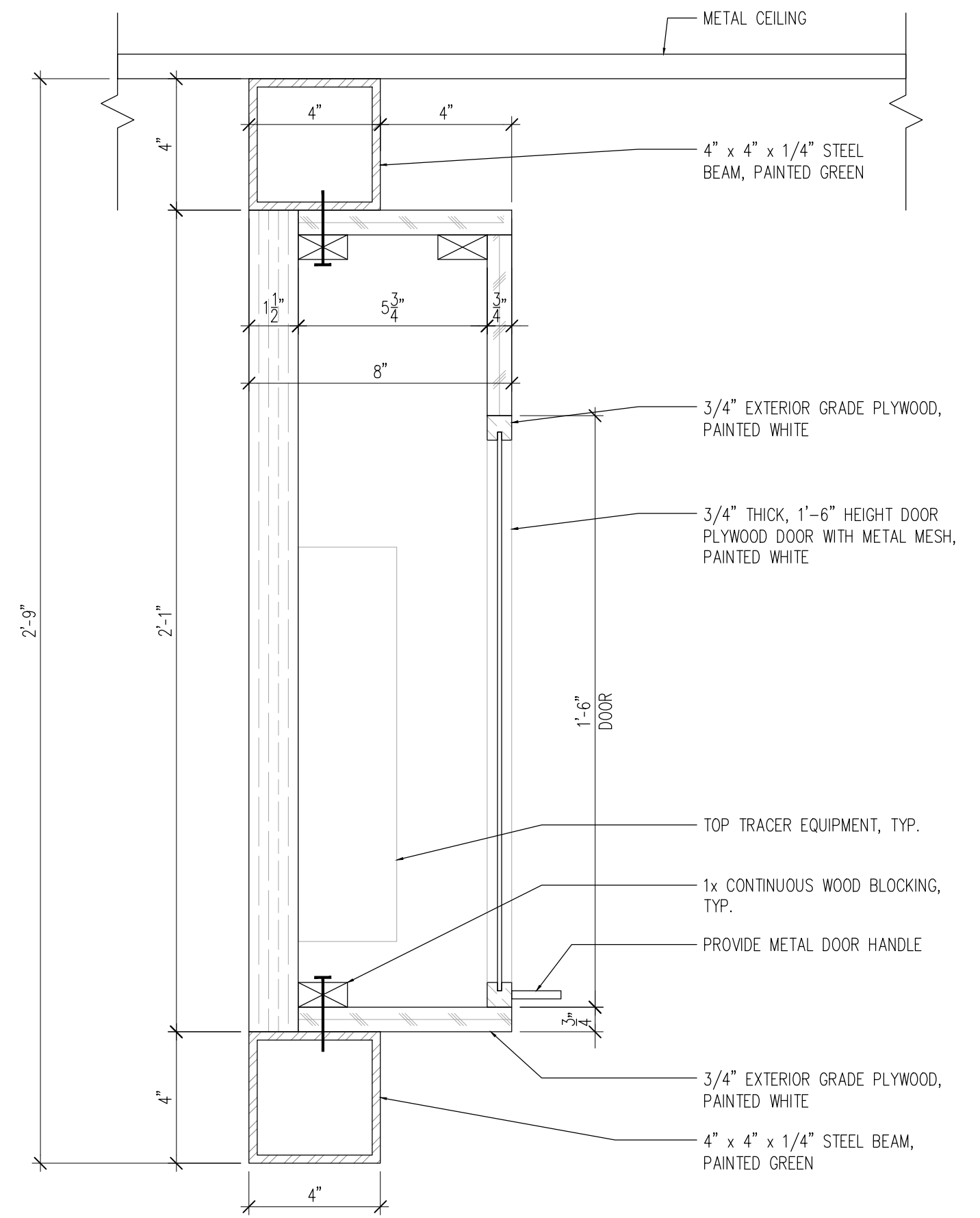
## 6 DOOR HEAD/JAMB DETAIL

Scale: 1/2' = 1'-0"



## 5 THRESHOLD HALF SADDLE

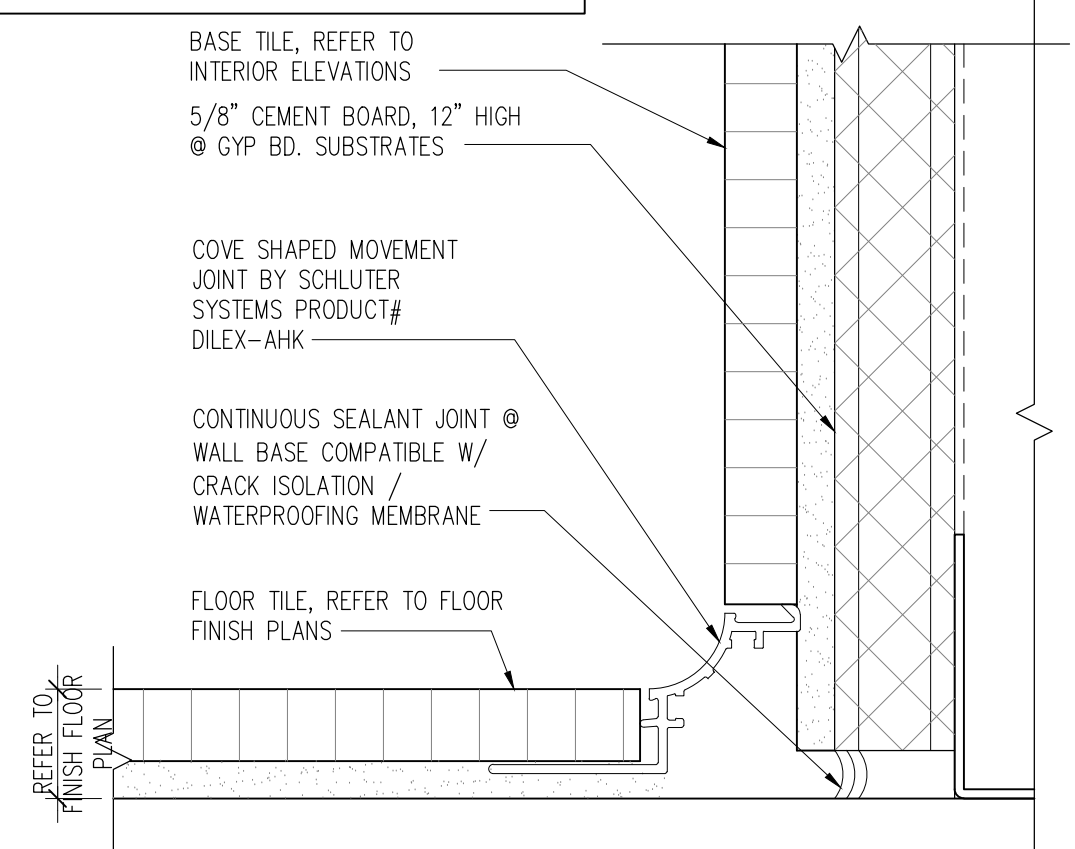
Scale: 1/2' = 1'-0"



## 9 TOP TRACER DETAIL

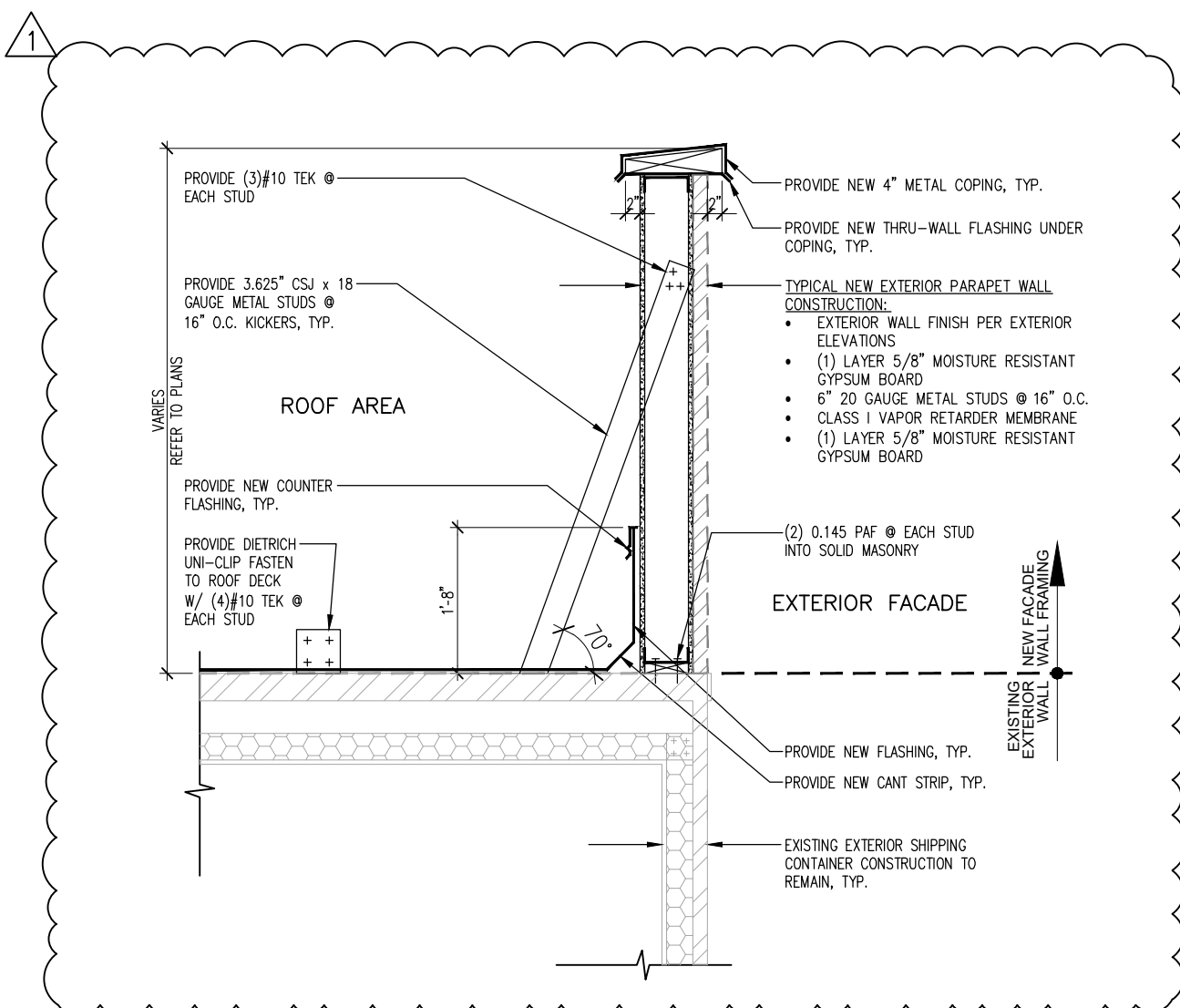
Scale: 3' = 1'-0"

- CONTRACTOR NOTES:
- INSTALL PER THE RECOMMENDATIONS OF THE TCNA
  - INDICATE LOCATIONS ON SHOP DRAWINGS



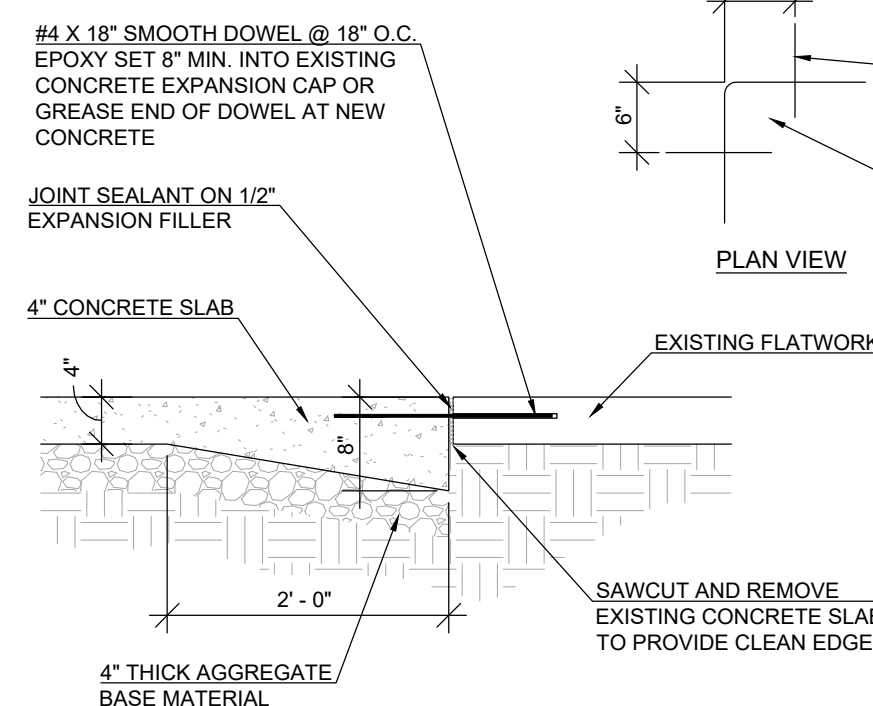
## 4 FLOOR BASE DETAIL

Scale: 1/2' = 1'-0"



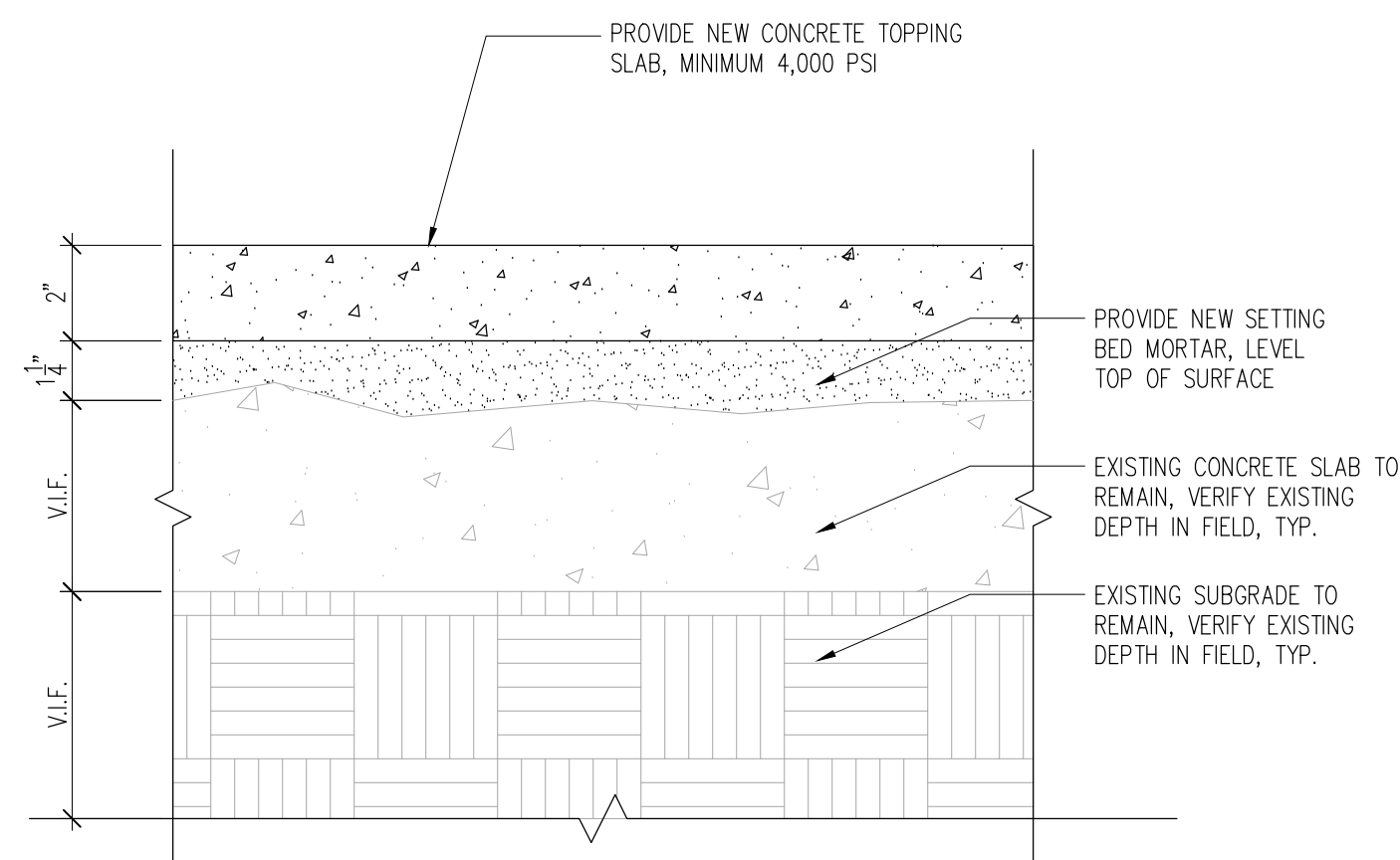
## 7 SHIPPING CONTAINER PARAPET WALL DETAIL

SCALE: 3/4' = 1'-0"



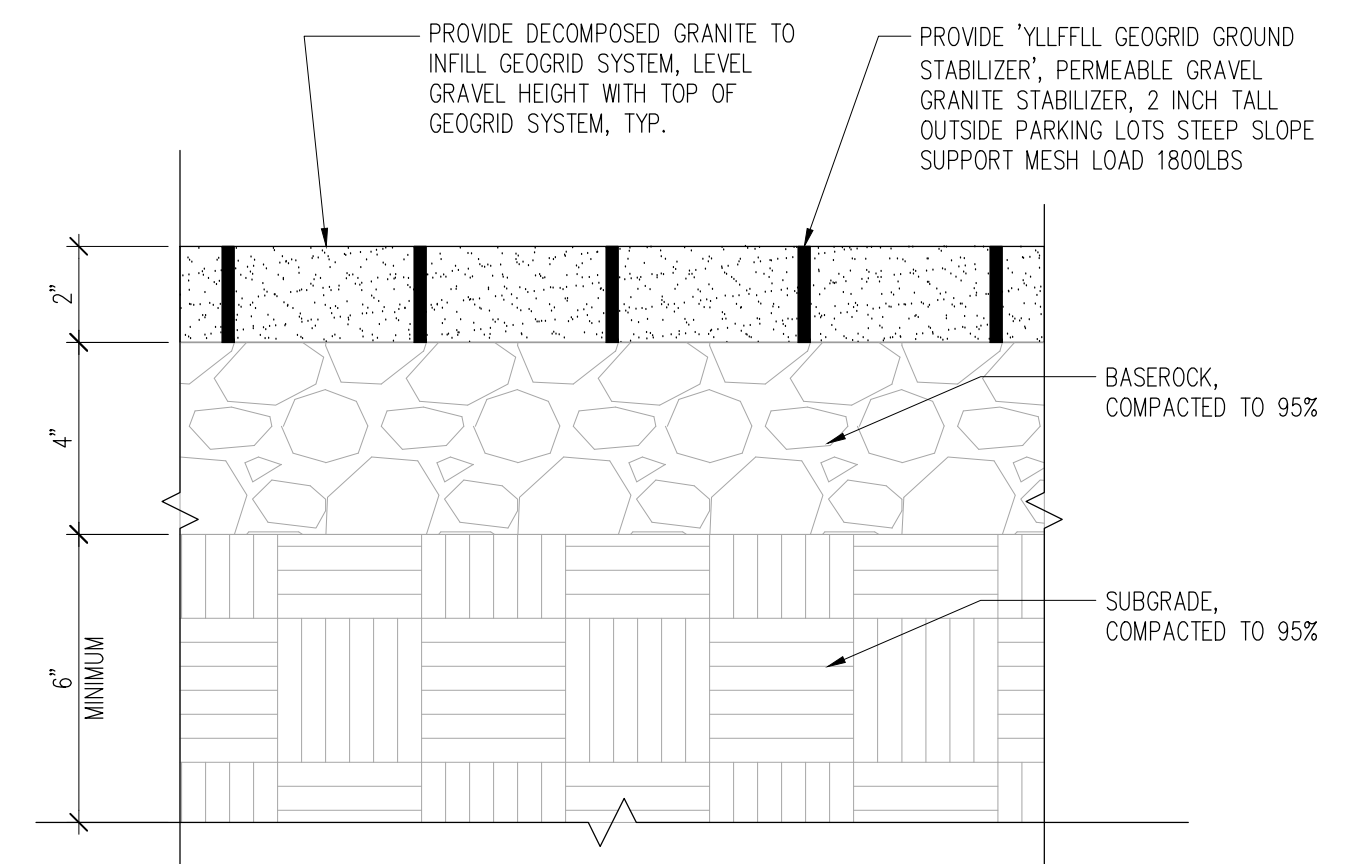
## 3 CONCRETE DOWEL DETAIL

Scale: 1'-0' = 1'-0"



## 2 TOPPING SLAB DETAIL

Scale: 3' = 1'-0"



## 1 COMPOSED GRANITE DETAIL

Scale: 3' = 1'-0"

ISSUE BLOCK	
PERMIT	04/06/23
PERMIT REVS	05/10/23
PLAN REVS	05/23/23
PERMIT REVS	06/01/23

CHECKED BY:	NP / EB
DRAWN BY:	KG
DOCUMENT DATE:	06/01/23

