

400 SW Longview Blvd, #190  
Lee's Summit, MO 64081

**RELEASED FOR  
CONSTRUCTION**  
As Noted on Plans Review  
Development Services Department  
Lee's Summit, Missouri  
07/03/2023

PROJECT DESCRIPTION:

PROJECT DESCRIPTION:

CHANGE OF USE FROM B TO M OCCUPANCY  
(ALLOWED PER BUILDING CODE ANALYSIS FROM  
ORIGINAL BUILDING PERMIT SET)

LIGHT REMODEL OF AN EXISTING 2,637 SF TENANT  
SPACE TO REMOVE TWO OFFICES, ADD A SECONDARY  
ENTRY, AND REPLACE CARPET AND PAINT.

2018- INTERNATIONAL BUILDING CODE  
2018- INTERNATIONAL MECHANICAL CODE  
2018- UNIFORM PLUMBING CODE  
2018- INTERNATIONAL FIRE CODE  
2017- NATIONAL ELECTRICAL CODE  
ICC/ANSI A117.1-2009 Accessible and Usable Buildings and Facilities

M - MERCANTILE  
(LIQUOR STORE)

N/A (EXISTING UNMODIFIED TENANT SPACE)

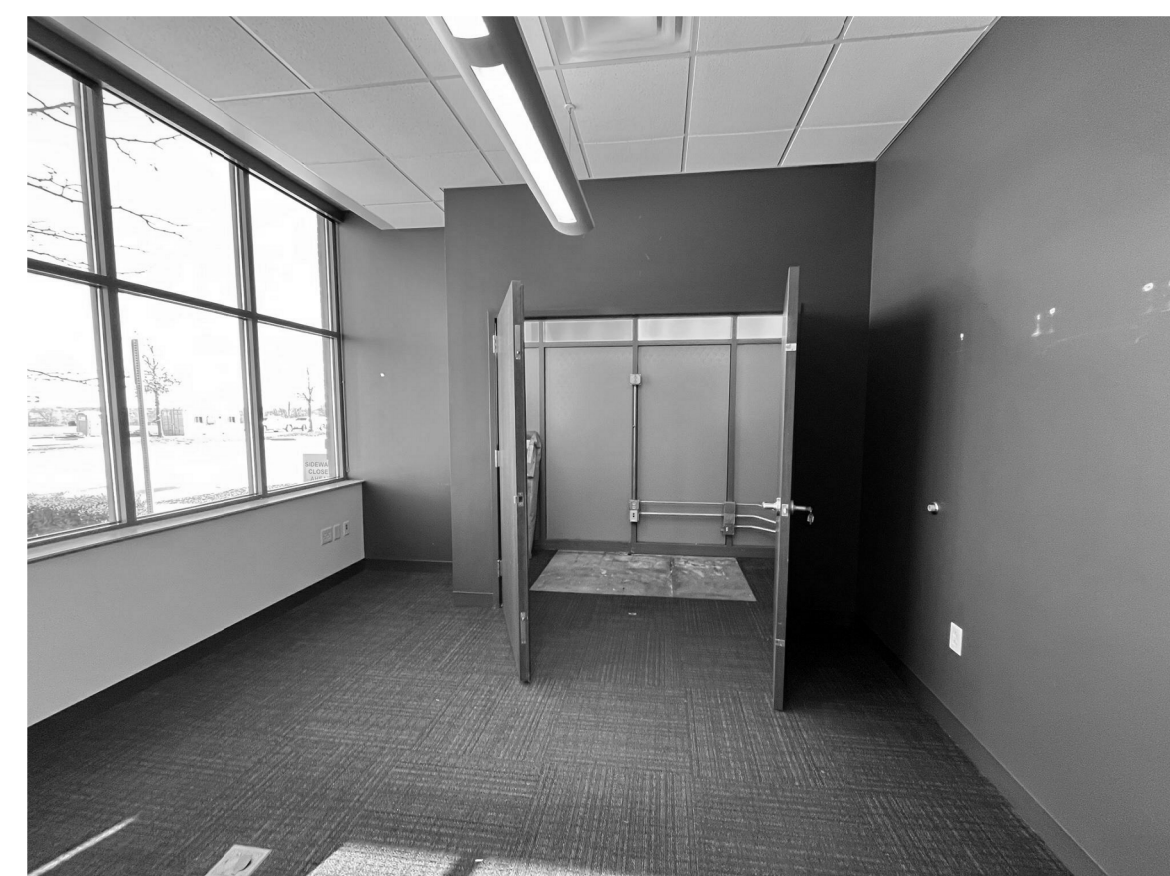
FULLY SPRINKLERED

EXISTING MEN / WOMEN RESTROOMS TO REMAIN  
EXISTING JANITOR'S CLOSET TO REMAIN

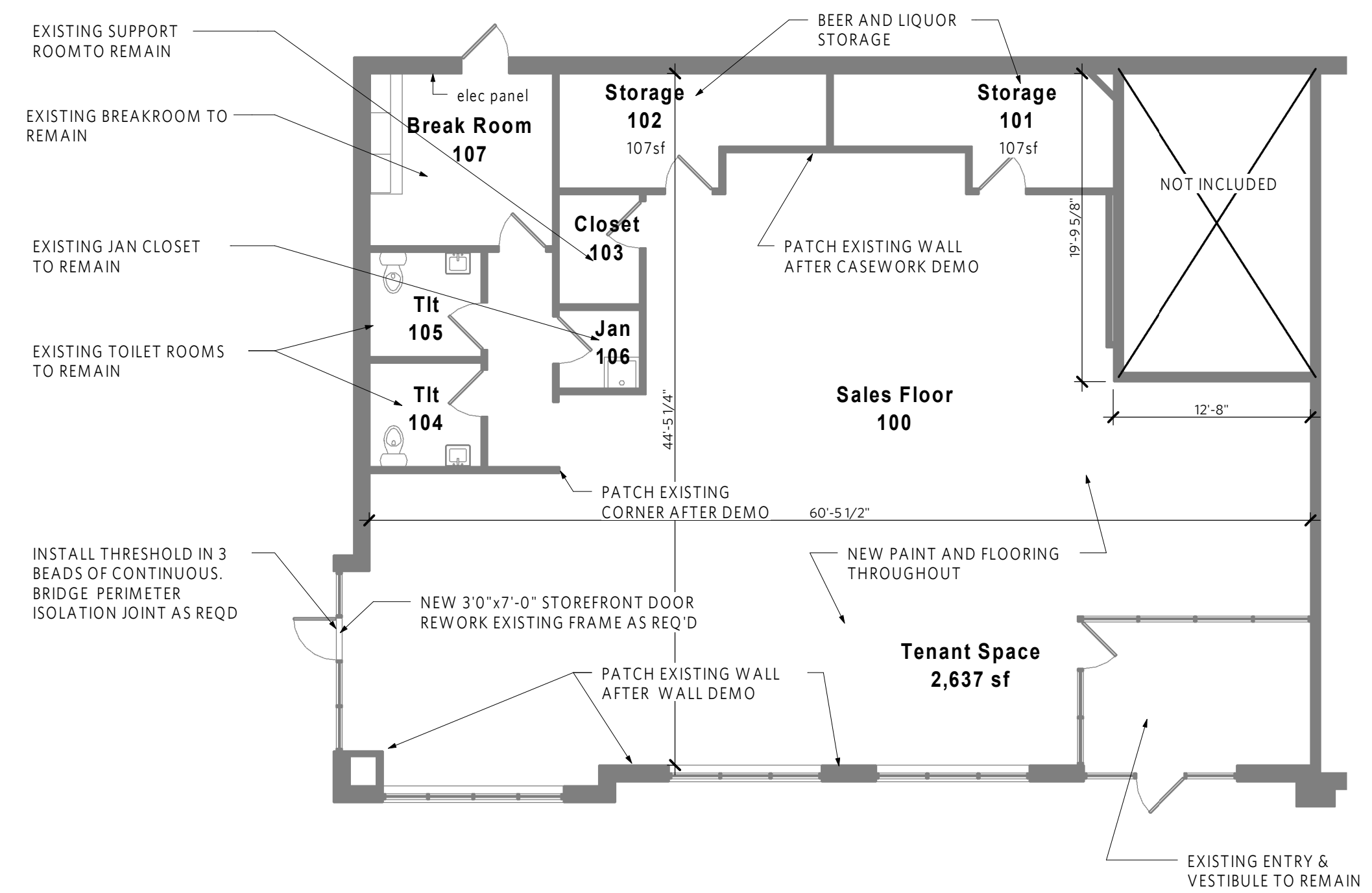
TOILETS: 1/500 REQ'D - 2 PROVIDED  
LAVATORIES: 1/750 REQ'D - 2 PROVIDED  
DRINKING FOUNTAIN: 1 REQ'D - BOTTLED WATER PROVIDED  
SERVICE SINK: 1 REQ'D - 1 PROVIDED

LOCAL JURISDICTION *CITY OF LEE'S SUMMIT*

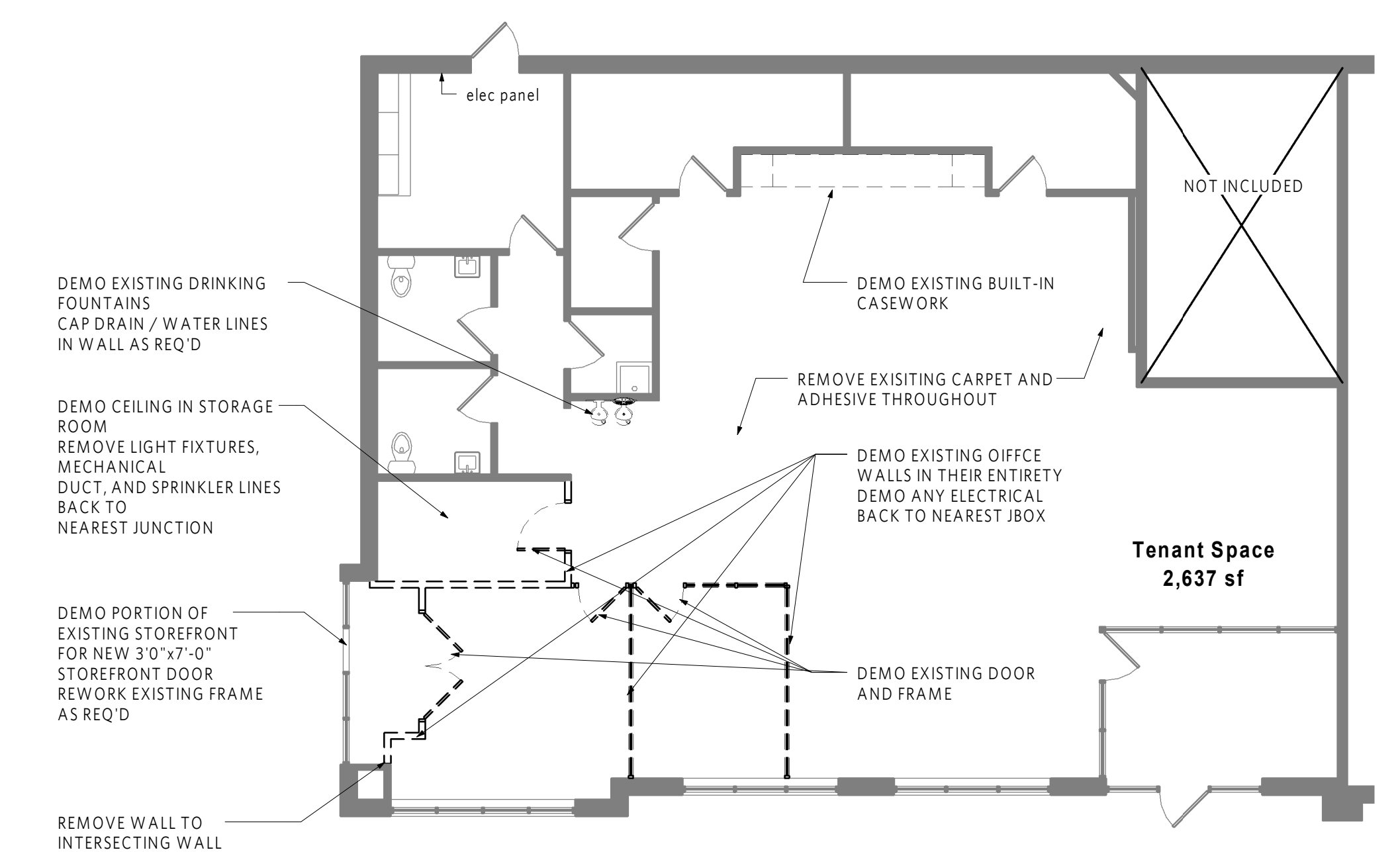
code 1
1/8" = 1'-0"



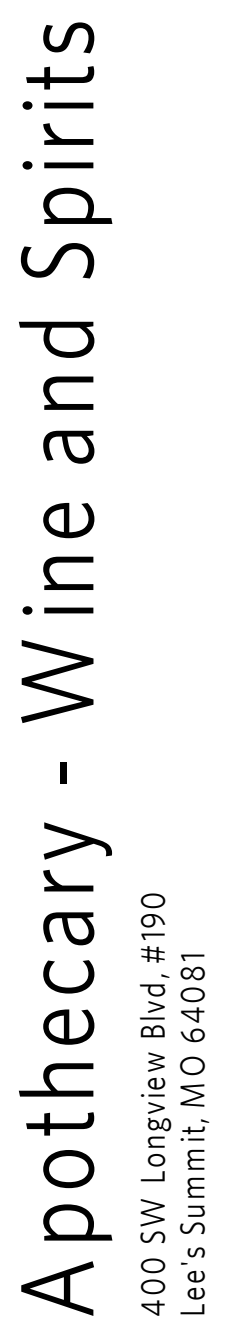
## 3



## 2 H



## 14



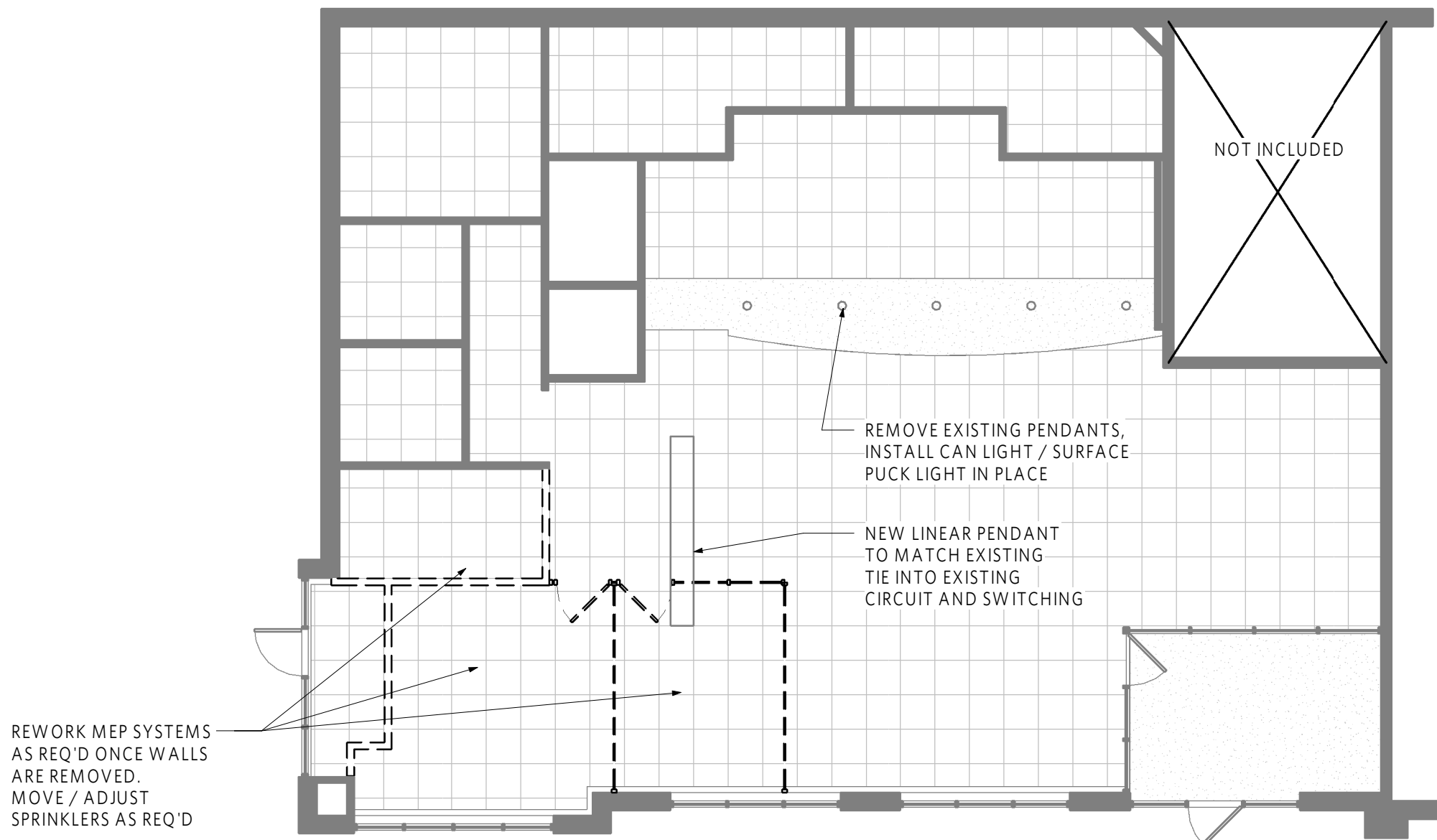
REV	ISSUE	DATE
	PERMIT SET	05.31.2023
	PERMIT REVIEW	06.23.2023



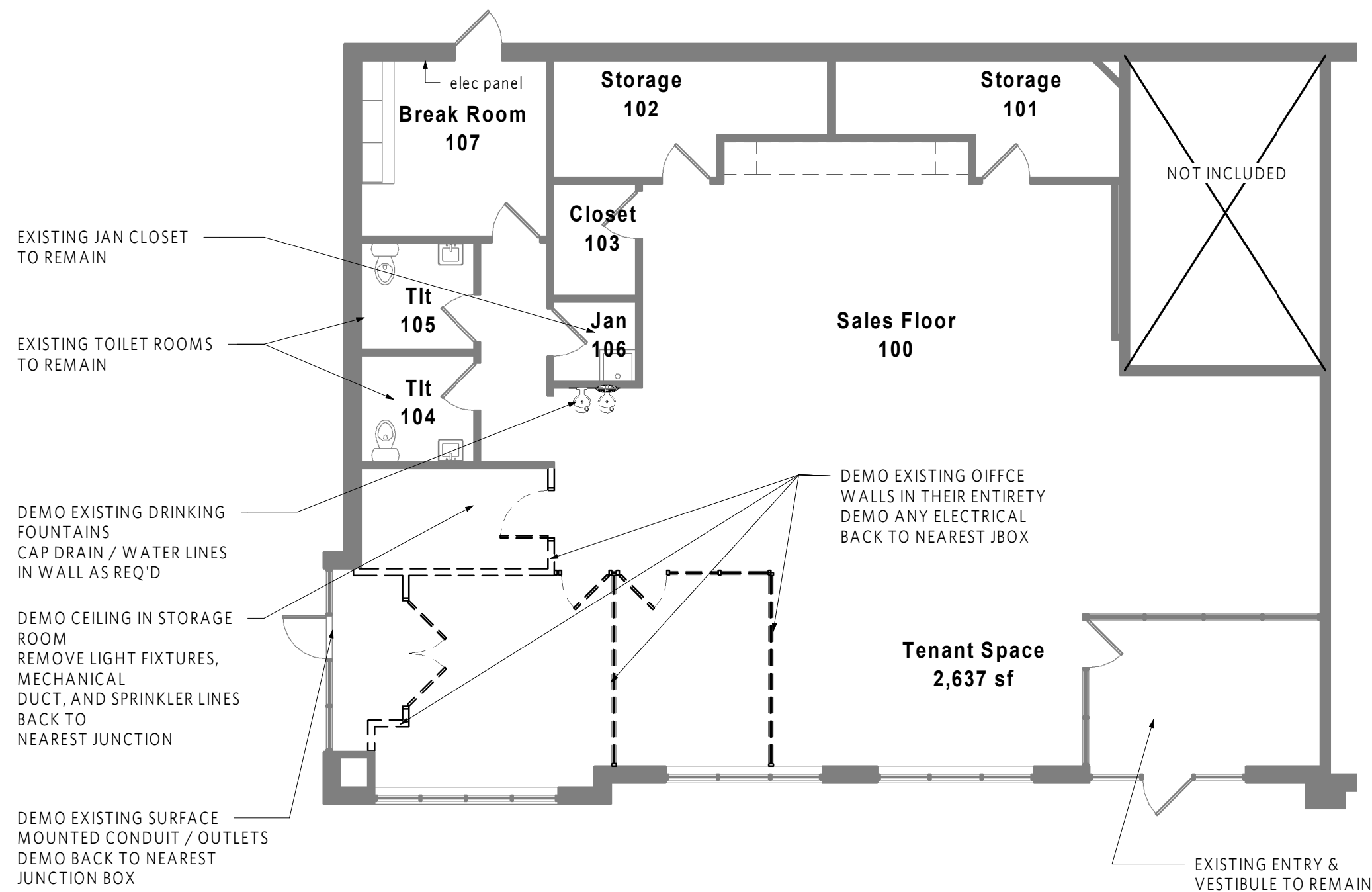
RELEASED FOR  
CONSTRUCTION  
As Noted on Plans Review  
Development Services Department  
Lee's Summit, Missouri  
07/03/2023

GENERAL NOTES - MEP

1. CONTRACTOR TO COORDINATE ALL MEP AND STRUCTURAL REQUIREMENTS.
2. CONTRACTOR TO INSTALL MEP SYSTEMS PER CODE.
3. DEMO'D MEP SYSTEMS TO BE REMOVED BACK TO NEAREST JUNCTION AND CAPPED.



2 | MEP - RCP  
1/8" = 1'-0"



1 | MEP Plan - TI  
1/8" = 1'-0"

Apothecary - Wine and Spirits

400 SW Longview Blvd., #190  
Lee's Summit, MO 64081



REV	ISSUE	DATE
1	PERMIT SET PERMIT REVIEW	05.31.2023 06.23.2023

MEP PLANS

MEP101