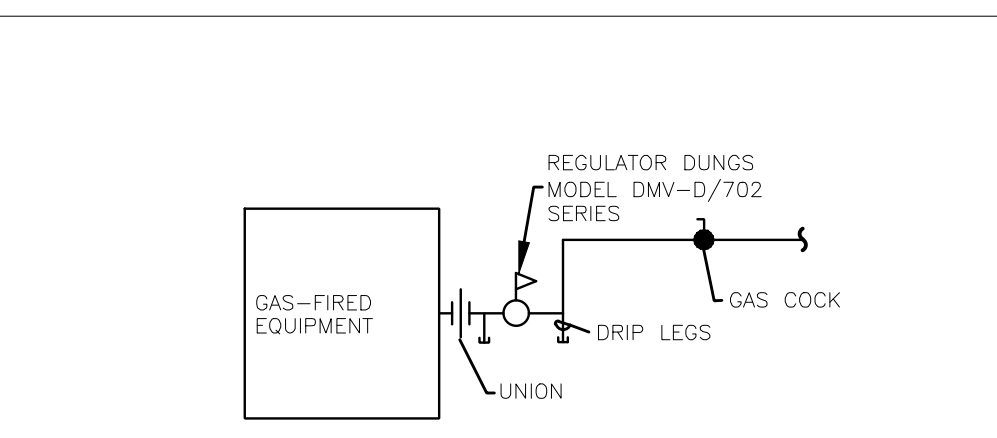
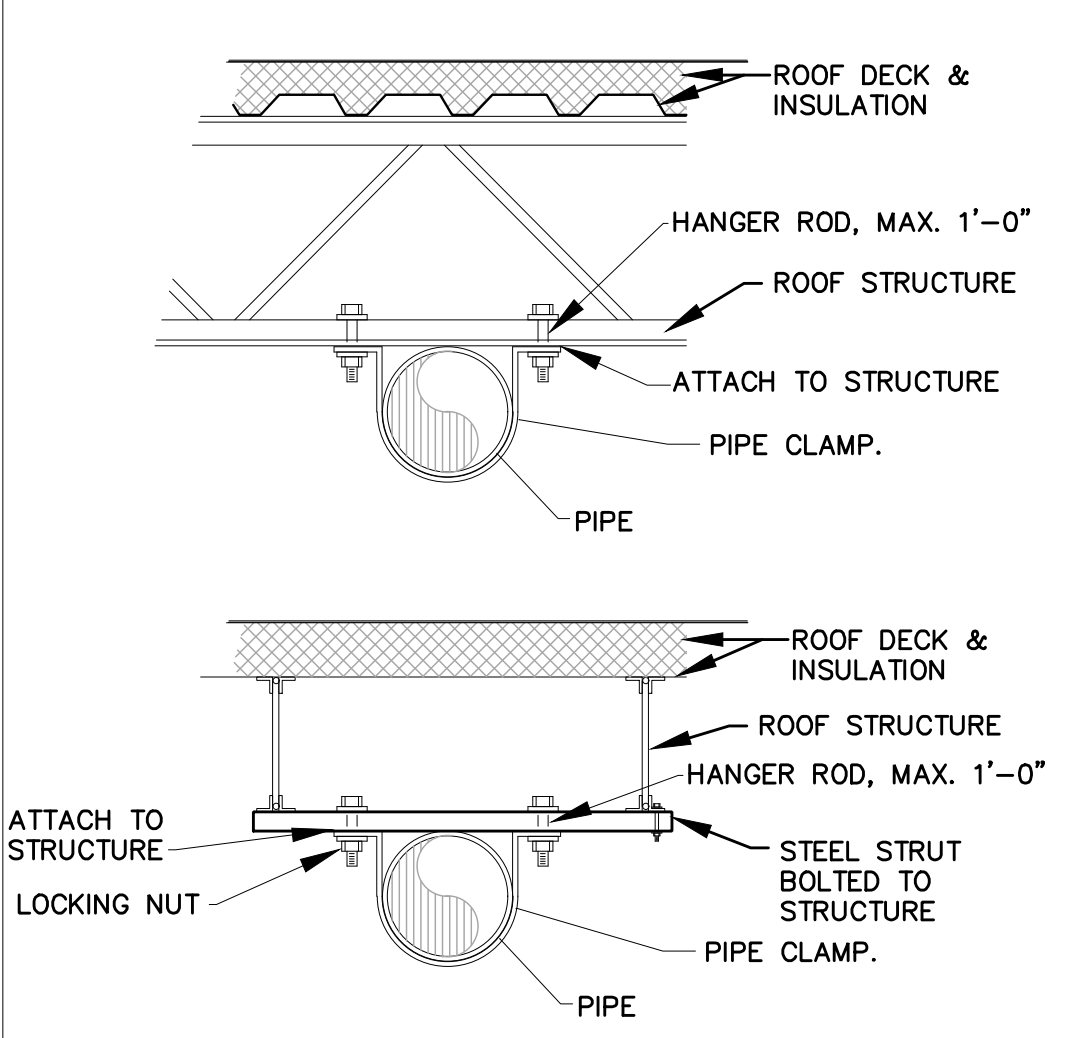


EXHAUST/INTAKE DUCTS
NO SCALE



GAS-FIRED EQUIPMENT PIPING DETAIL
SCALE: NONE



PIPE HANGING DETAIL
NO SCALE

GENERAL NOTES

1. DOWNDRAFT BOOTH TO BE GLOBAL FINISHING SOLUTIONS.
2. PAINT BOOTH AND PRODUCT DOOR MEETS NFPA CODE 33.
3. EXHAUST FAN TO BE UL AND CSA CERTIFIED.
4. AIR VOLUME OF 4 CHANGES PER MIN @ 12,000 CFM FOR PAINT BOOTH. INTAKE FILTER POCKET STYLE, 95% AVERAGE ARRESTANCE. PLENUM FILTER 20"x48", 99% EFFICIENT AT REMOVING 10 MICRONS OR LARGER. EXHAUST FILER 20"x25", 99.6% AVERAGE ARRESTANCE.
5. FIRE SUPPRESSION SYSTEM BY OTHERS.
6. CONTRACTOR TO INSTALL NEW AIR SOLENOID VALVE AND ELECTRICALLY INTERLOCK VALVE IN THE PAINT BOOTH.
7. ALL INSTALLATION TO BE IN ACCORDANCE WITH LOCAL CODES, IMC, AND NFPA REGULATIONS.
8. VALVE TO PAINT BOOTH BY USE OF 3 PROXIMITY SWITCHES.
9. MIXING ROOM AND PRODUCT DOOR MEETS NFPA CODE 33.
10. AIR VOLUME OF 1 TO 2 CHANGES PER MIN @ 1150 CFM FOR MIXING ROOM.
11. SUPPLY AIR IS FILTERED THROUGH VILIDON 5606.

SUPPLY UNIT SCHEDULE										
MARK	MFR	EQUIPMENT SERVING	CFM	O.A. CFM	ESP	HP	GAS HTG MBH IN	GAS HTG MBH OUT	ELECTRICAL VOLT/PHASE	REMARKS
SF-1	GLOBAL FINISHING SOLUTIONS	PAINT BOOTH	15,205	15,205	1.0	15	1512.6	1323.5	208/3	1,2,3

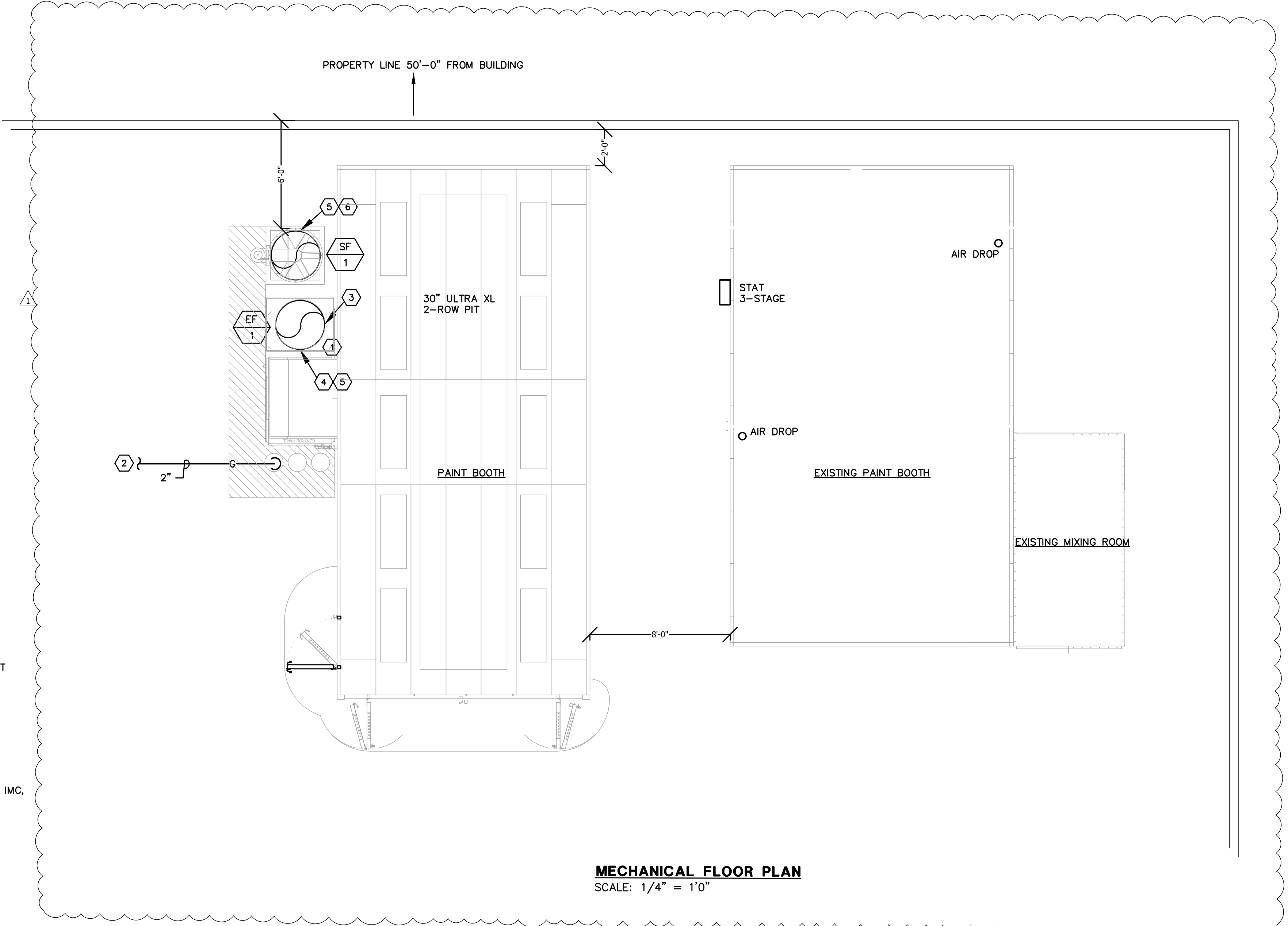
1. SERVES PAINT BOOTH
2. VERIFY ELECTRICAL VOLTAGE AND PHASE WITH ELECTRICAL CONTRACTOR PRIOR TO ORDERING UNIT.
3. SEE SHEET M2 FOR MANUFACTURER'S DRAWINGS.

EXHAUST FAN SCHEDULE							
MARK	MANUFACTURER	EQUIPMENT SERVING	CFM	SP	HP	VOLTS/PH	REMARKS
EF-1	GLOBAL FINISHING SOLUTIONS	PAINT BOOTH	15,205	.75	7.5	208/3	1,2,3,4,5

1. SERVES PAINT BOOTH.
2. VERIFY ELECTRICAL VOLTAGE AND PHASE WITH ELECTRICAL CONTRACTOR PRIOR TO ORDERING UNIT.
4. SEE SHEET M2 THROUGH M3 FOR MANUFACTURER'S DRAWINGS.
5. FANS TO BE NON-SPARKING.

MECHANICAL KEYED NOTES

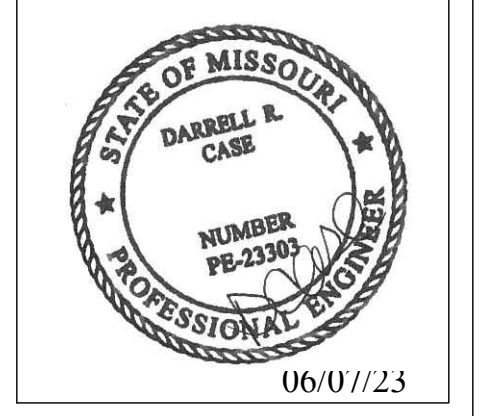
- 1 34"Ø SUPPLY AIR DUCT UP THROUGH ROOF.
- 2 CONNECT 2" GAS LINE TO EXISTING 2" GAS IN CEILING SPACE. VERIFY EXACT LOCATION IN FIELD.
- 3 34"Ø EXHAUST AIR DUCT UP THROUGH ROOF.
- 4 FURNISH AND INSTALL NEW BOOTH MOUNTED EXHAUST FAN (EF-1), 7.5 HP. VERIFY VOLTAGE WITH OWNER REPRESENTATIVE. DUCT AND RAIN CAP TO TERMINATE ABOVE ROOF LINE.
- 5 ALL AIR INTAKES AND EXHAUSTS NEED TO BE SEPARATED BY A MINIMUM OF 10'-0".
- 6 FURNISH AND INSTALL NEW BOOTH MOUNTED SUPPLY FAN (SF-1), 15 HP. VERIFY VOLTAGE WITH OWNER REPRESENTATIVE. DUCT AND RAIN CAP TO TERMINATE ABOVE ROOF LINE.



MECHANICAL FLOOR PLAN
SCALE: 1/4" = 1'0"

CASE Engineering Inc.
T 636.349.1600
F 636.349.1730
796 Merens Court
St. Louis, MO 63126
CERTIFICATE OF AUTHORITY NO. 18408801-006

AUTOMOTIVE TECHNOLOGY, INC.
544 MAE COURT
FENTON, MO 63026



CARSTAR OF LEE SUMMIT
PAINT BOOTH
2509 NE INDEPENDENCE
LEE SUMMIT, MO 64064

REVISIONS		
No.	Description	Date
1	CITY COMMENTS	06/07/23

PAINT BOOTH LOCATION

Project #
Issue Date
Drawn by
Checked by

M1

Scale

FIRE PROTECTION MUST COMPLY WITH SECTION 2404.4 OF INTERNATIONAL FIRE CODE. UNDER DEFERRED SUBMITTAL.