



June 14, 2023

Distribution:

Craig Bruning
New Mark Homes
5207 NW Crooked Road
Parkville, Missouri 64152

Project:

23-306 - Lot 173 Woodside Ridge
2905 NW O'Brien Rd.
Lee Summit, Missouri

COMPLIANCE LETTER

This letter shall serve as verification that a representative(s) from Apex Engineers, Inc. ("Apex") performed a design review of the beam splice location on the Main Floor Plan for the above referenced project.

- The W8x15 FLUSH beam in the kitchen was cut short and needs an extension. The beam may be extended with a Complete Joint Penetration weld at the top and bottom flanges, and a 5/16" plate at the web with a 3/16" weld all around. See image below for approximate plan location and splice detail.

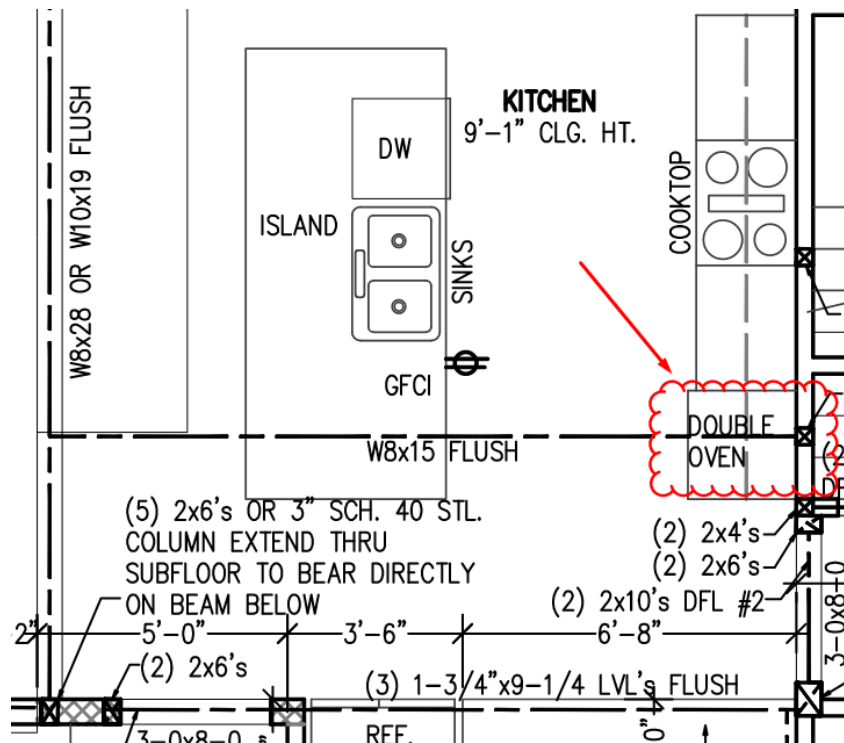


Image 1: Framing location on Sheet A3

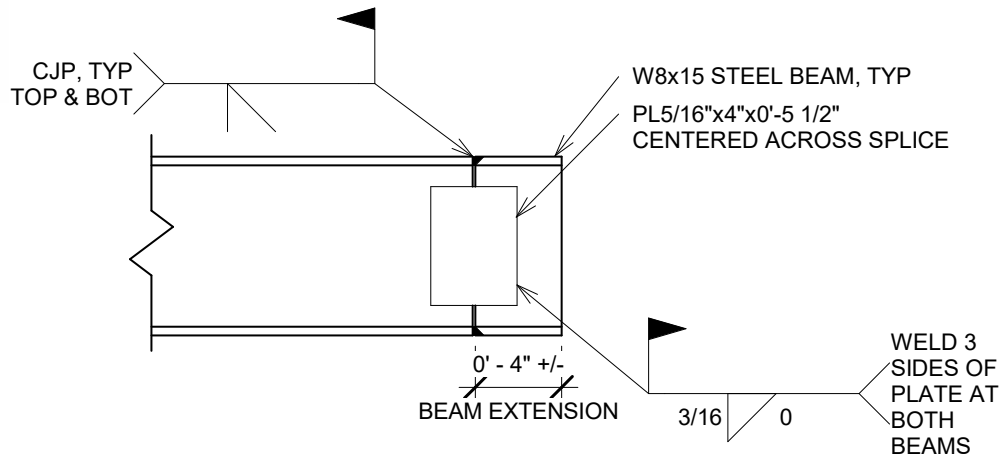


Image 2: Beam splice detail

To the best of our knowledge, information and belief, construction of the above phases was in general conformance with the construction documents and approved changes.

LIMITATIONS

Apex has performed its services in a manner consistent with the standard of care and skill ordinarily exercised by members of our profession practicing under similar circumstances. The services of Apex should not be construed as Special Inspection services or full-time observation or inspection. Apex does not insure any result, nor does it warrant or guarantee that construction was properly performed. Even with constant monitoring, some construction defects may be missed. Apex is not responsible for the means, methods, sequences, and techniques of construction, since the contractor is solely responsible those and for the quality of work, adhering to plans, specifications, and appropriate codes, and repairing defects, deficiencies or omission, regardless of whether a defect is observed.

In addition, the scope our services does not include any evaluation of the building or site for job-site safety and/or hazardous conditions. The contractor is solely responsible for safety and compliance with IRC, IBC, and OSHA standards.

Finally, Apex's scope of services does not include any environmental assessment (such as, but not limited to mold, mildew, presence of hazardous or toxic materials in the soil, surface water, ground water, etc.).

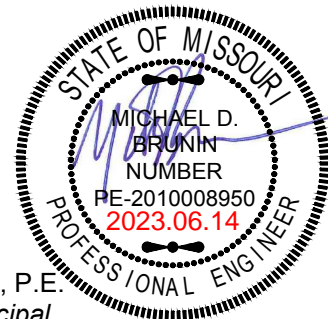
To the fullest extent permitted and allowed by law, Apex's client agrees to indemnify and hold harmless Apex and its owners, partners, officers, directors, employees, agents and sub-consultants, from and against all damage, liability and costs, including reasonable attorney's fees and cost of defense, arising out of the performance of these services, excepting only those damages, liabilities or costs attributable to the negligence or willful misconduct of Apex or its consultants.

Please call if Apex Engineers, Inc. can be of further assistance.

Best Regards,
Apex Engineers, Inc.



Thomas Adams, P.E.
Project Engineer



Mike D. Brunin, P.E.
Associate Principal