
2022



Site Recommendation Book

PANERA BREAD #2406
1410 Ne Douglas St
Lees Summit, MO 64086

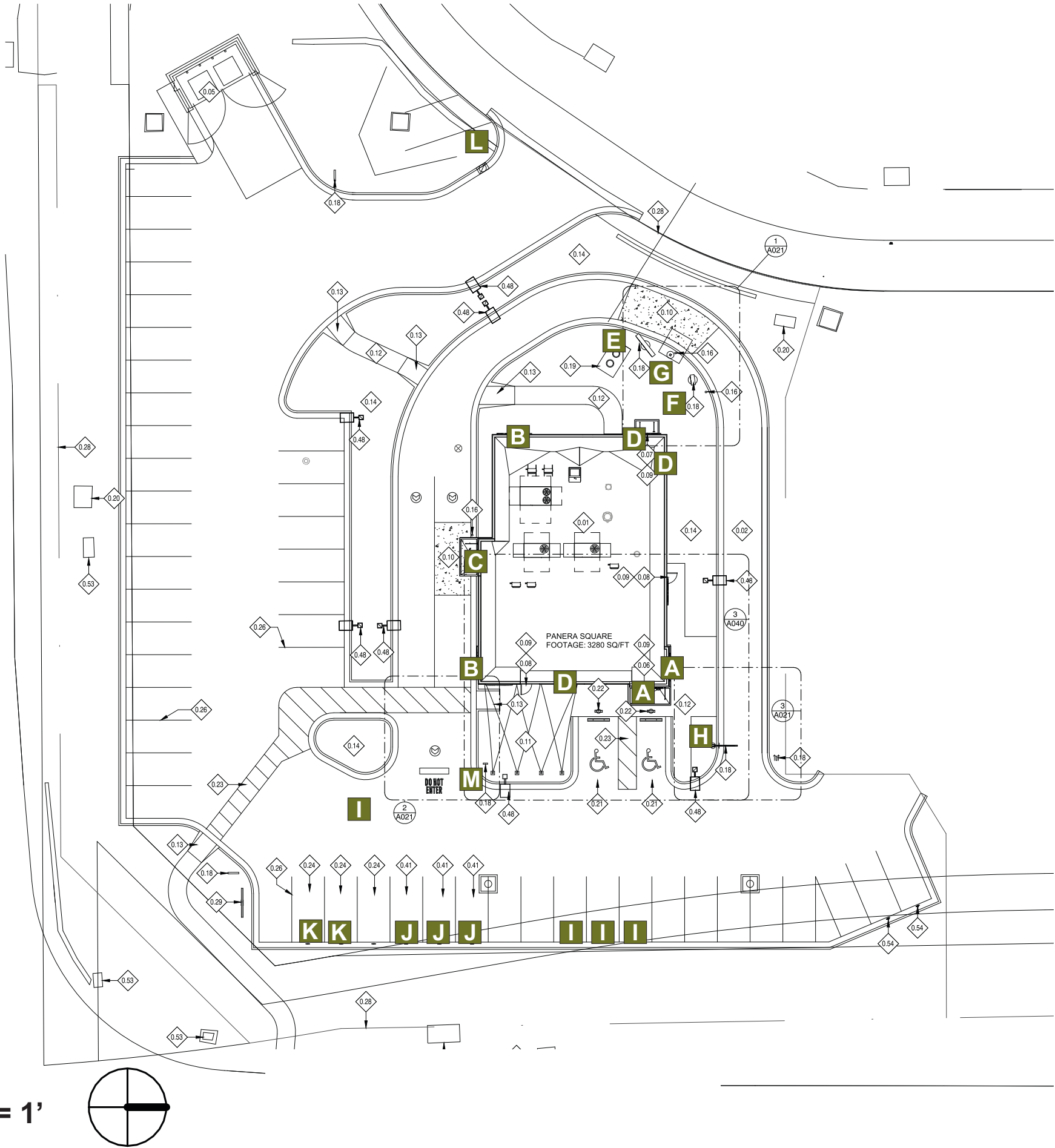
QID: 22-61829

Designer:
Glenn Miller

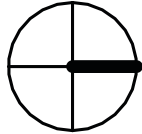
Date:
7-15-22

SITE PLAN

- A 24" CHANNEL LETTERS
- B 28" CHANNEL LETTERS
- C 49.5" MB LOGO
- D 22" DT/RPU
- E MENU BOARD
- F PREVIEW BOARD
- G CANOPY
- H DT CLEARANCE BAR
- I RPU PARKING SIGN
- J DT PARKING SIGN
- K DELIVERY PARKING SIGN
- L DIRECTIONAL TY/DNE
- M DIRECTIONAL <DT/DT>



1/32" = 1'



HILTONDISPLAYS
125 HILLSIDE DRIVE • GREENVILLE SC 29607
P 800 353 9132 • F 864 242 2204
www.hiltondisplays.com

QID 22-61829

JOB NAME

Panera 2406

LOCATION

1410 Ne Douglas St
Lees Summit MO 64086

CUSTOMER CONTACT

SALESMAN / PM

Sabrina Smith

DESIGNER

Glenn Miller

DWG. DATE

7-15-22

REV. DATE / REVISION

2-16-23

SCALE

FILE

2022/Panera/Locations/
Lees Summit MO/22-61829/
PB Lees Summit MO 22-61829

DESIGN SPECIFICATIONS ACCEPTED BY:

EST:	CLIENT:
SLS/PM:	LANDLORD:

THE INTENT OF THIS DRAWING IS TO SHOW A CONCEPTUAL REPRESENTATION OF THE PROPOSED SIGNAGE. DUE TO VARIATIONS IN PRINTING DEVICES AND SUBSTRATES, THE FINISHED PRODUCT MAY DIFFER SLIGHTLY FROM DRAWING.



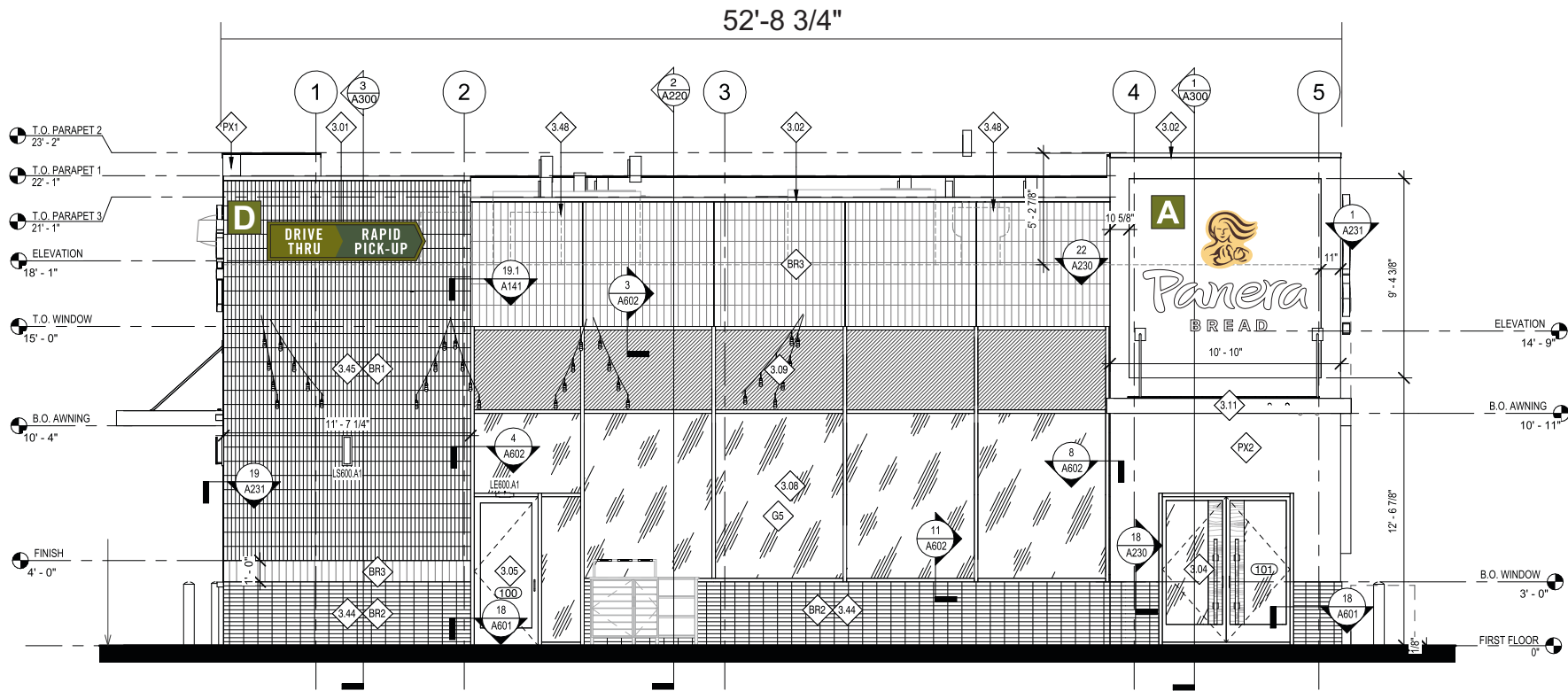
- A** 24" CHANNEL LETTERS
- B** 28" CHANNEL LETTERS
- C** 49.5" MB LOGO
- D** 22" DT/RPU
- E** MENU BOARD
- F** PREVIEW BOARD
- G** CANOPY
- H** DT CLEARANCE BAR
- I** RPU PARKING SIGN
- J** DT PARKING SIGN
- K** DELIVERY PARKING SIGN
- L** DIRECTIONAL TY/DNE
- M** DIRECTIONAL <DT/DT>




**Underwriters
Laboratories Inc.**

ELEVATION

- A 24" CHANNEL LETTERS
- B 28" CHANNEL LETTERS
- C 49.5" MB LOGO
- D 22" DT/RPU
- E MENU BOARD
- F PREVIEW BOARD
- G CANOPY
- H DT CLEARANCE BAR
- I RPU PARKING SIGN
- J DT PARKING SIGN
- K DELIVERY PARKING SIGN
- L DIRECTIONAL TY/DNE
- M DIRECTIONAL <DT/DT>



EAST ELEVATION
1/8" = 1'-0"

QID 22-61829
JOB NAME
Panera 2406
LOCATION
1410 Ne Douglas St Lees Summit MO 64086
CUSTOMER CONTACT
SALESMAN / PM
Sabrina Smith
DESIGNER
Glenn Miller
DWG. DATE
7-15-22
REV. DATE / REVISION
2-16-23
SCALE
FILE
2022/Panera/Locations/ Lees Summit MO/22-61829/ PB Lees Summit MO 22-61829

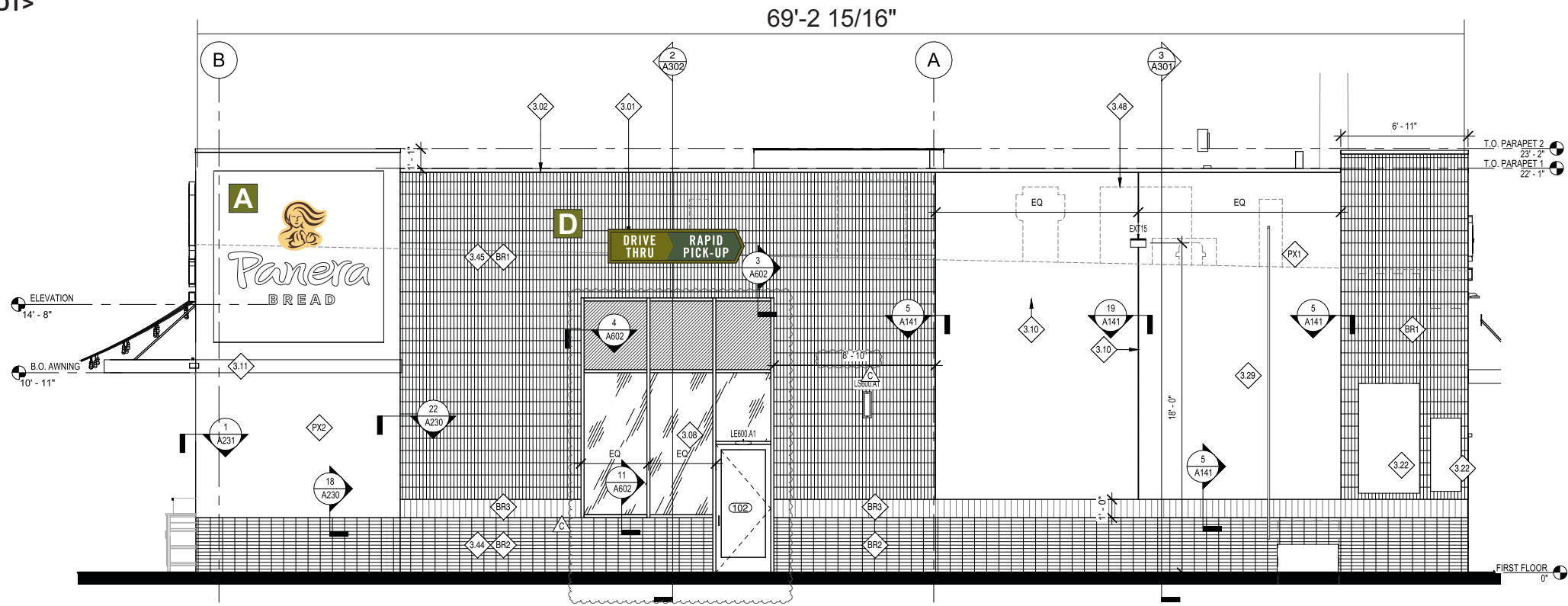
DESIGN SPECIFICATIONS ACCEPTED BY:

EST:	CLIENT:
SLS/PM:	LANDLORD:

THE INTENT OF THIS DRAWING IS TO SHOW A CONCEPTUAL REPRESENTATION OF THE PROPOSED SIGNAGE. DUE TO VARIATIONS IN PRINTING DEVICES AND SUBSTRATES, THE FINISHED PRODUCT MAY DIFFER SLIGHTLY FROM DRAWING.

ELEVATION

- A 24" CHANNEL LETTERS
- B 28" CHANNEL LETTERS
- C 49.5" MB LOGO
- D 22" DT/RPU
- E MENU BOARD
- F PREVIEW BOARD
- G CANOPY
- H DT CLEARANCE BAR
- I RPU PARKING SIGN
- J DT PARKING SIGN
- K DELIVERY PARKING SIGN
- L DIRECTIONAL TY/DNE
- M DIRECTIONAL <DT/DT>



NORTH ELEVATION
1/8" = 1'-0"

QID 22-61829

JOB NAME

Panera 2406

LOCATION

1410 Ne Douglas St
Lees Summit MO 64086

CUSTOMER CONTACT

SALESMAN / PM

Sabrina Smith

DESIGNER

Glenn Miller

DWG. DATE

7-15-22

REV. DATE / REVISION

2-16-23

SCALE

FILE

2022/Panera/Locations/
Lees Summit MO/22-61829/
PB Lees Summit MO 22-61829

DESIGN SPECIFICATIONS ACCEPTED BY:

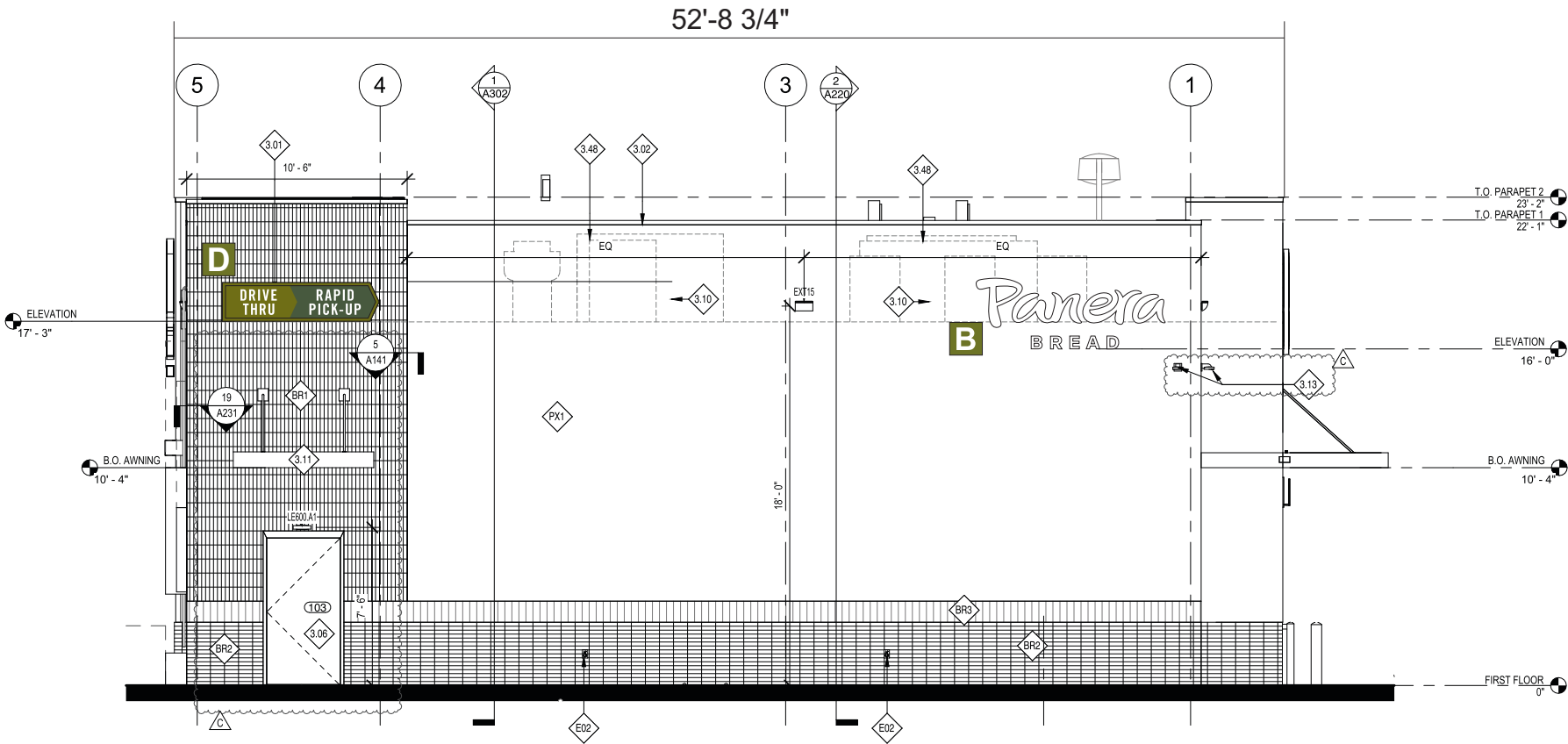
EST: CLIENT:

SLS/PM: LANDLORD:

THE INTENT OF THIS DRAWING IS TO SHOW A CONCEPTUAL REPRESENTATION OF THE PROPOSED SIGNAGE. DUE TO VARIATIONS IN PRINTING DEVICES AND SUBSTRATES, THE FINISHED PRODUCT MAY DIFFER SLIGHTLY FROM DRAWING.

ELEVATION

- A 24" CHANNEL LETTERS
- B 28" CHANNEL LETTERS
- C 49.5" MB LOGO
- D 22" DT/RPU
- E MENU BOARD
- F PREVIEW BOARD
- G CANOPY
- H DT CLEARANCE BAR
- I RPU PARKING SIGN
- J DT PARKING SIGN
- K DELIVERY PARKING SIGN
- L DIRECTIONAL TY/DNE
- M DIRECTIONAL <DT/DT>



WEST ELEVATION
1/8" = 1'-0"

QID 22-61829
JOB NAME
Panera 2406
LOCATION
1410 Ne Douglas St Lees Summit MO 64086
CUSTOMER CONTACT
SALESMAN / PM
Sabrina Smith
DESIGNER
Glenn Miller
DWG. DATE
7-15-22
REV. DATE / REVISION
2-16-23
SCALE
FILE
2022/Panera/Locations/ Lees Summit MO/22-61829/ PB Lees Summit MO 22-61829

DESIGN SPECIFICATIONS ACCEPTED BY:

EST:	CLIENT:
SLS/PM:	LANDLORD:

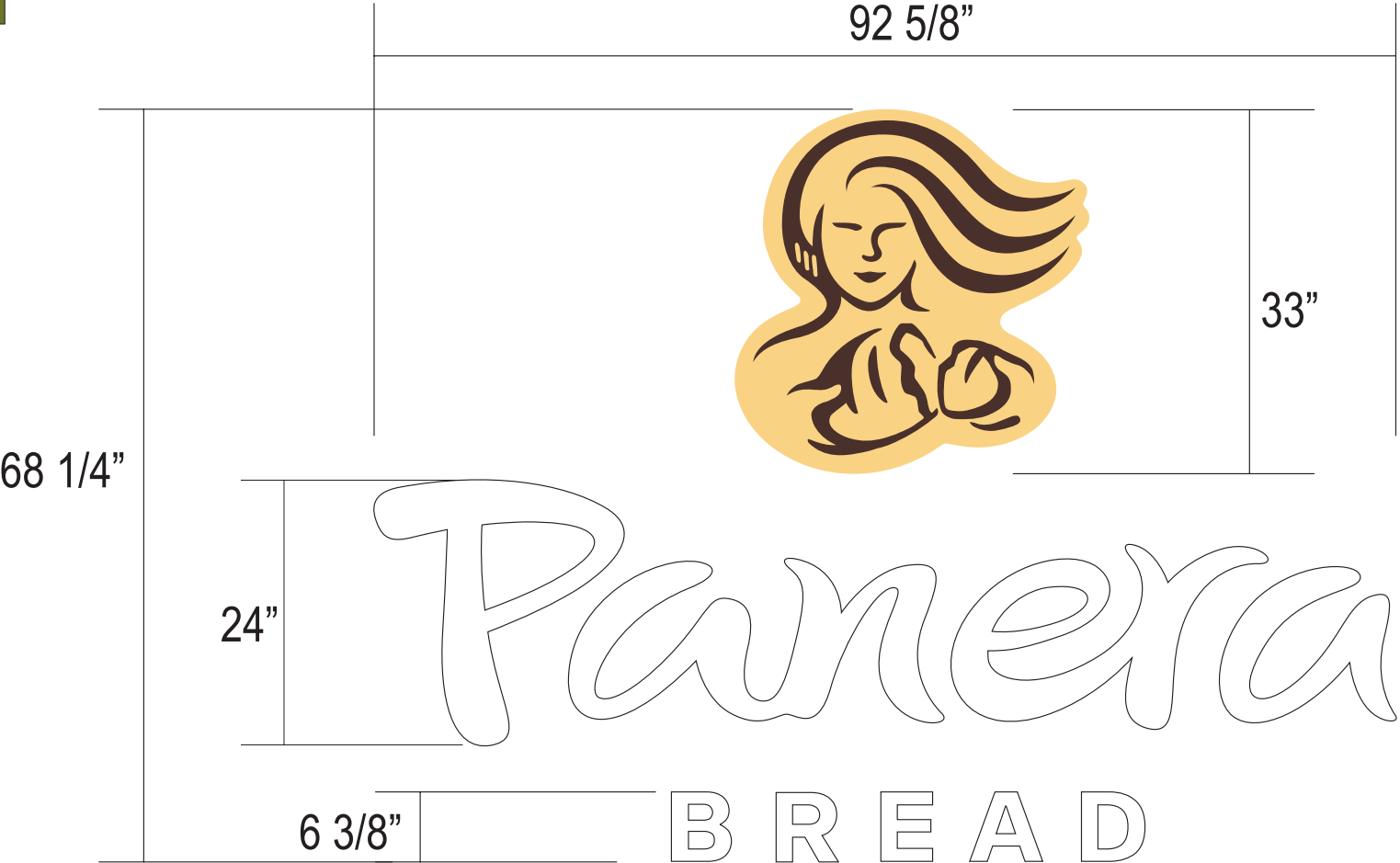
THE INTENT OF THIS DRAWING IS TO SHOW A CONCEPTUAL REPRESENTATION OF THE PROPOSED SIGNAGE. DUE TO VARIATIONS IN PRINTING DEVICES AND SUBSTRATES, THE FINISHED PRODUCT MAY DIFFER SLIGHTLY FROM DRAWING.

INTERNALLY ILLUMINATED FRONT LIT/HALO LIT CHANNEL LETTERS AND LOGO:

PAN-RCL-S2L-2433-STK-W

Qty. 2

A

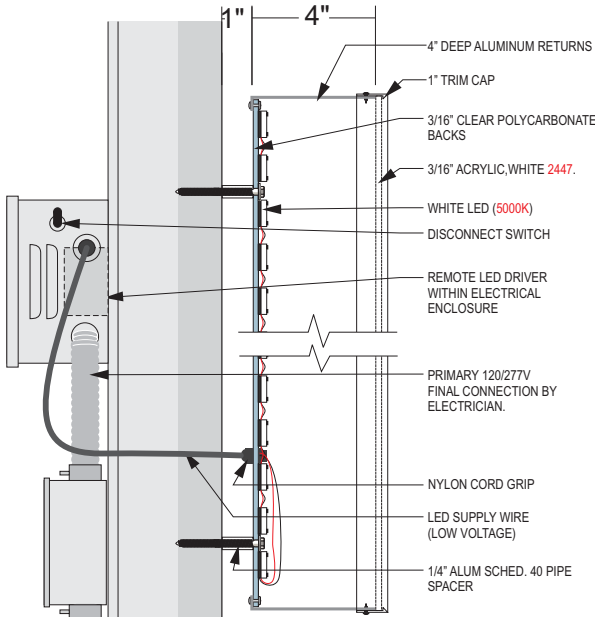


SCALE: 3/4" = 1'-0"
43.90 S/F

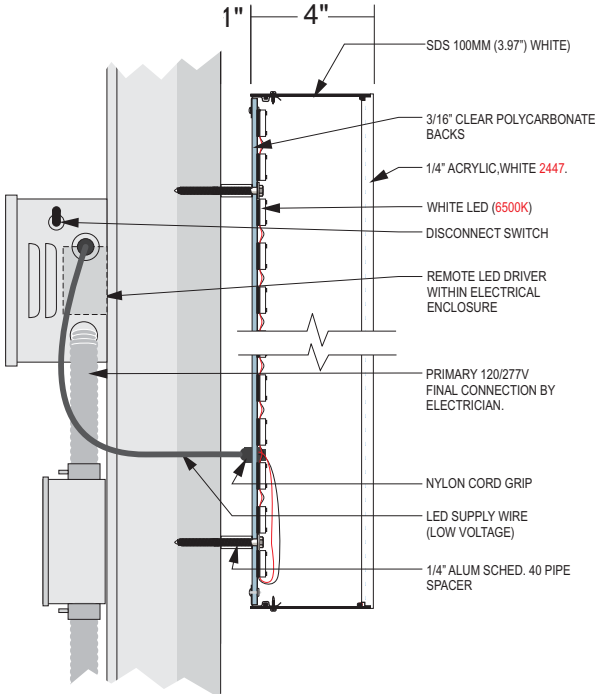
- “PANERA BREAD” LETTERS (TRIMLESS DESIGN)
INTERNALLY ILLUMINATED FACE LIT/HALO LIT CHANNEL LETTERS
- 2447 WHITE ACRYLIC FACES
 - 4IN DEEP RETURNS PAINTED PANTONE 7540C SLATE
 - CLEAR POLYCARBONATE BACKS
 - 6500K WHT SLOAN “PANERA”
 - 6500K WHT SLOAN “BREAD”

- ”MOTHER BREAD LOGO” (TRIM CAP DESIGN)
INTERNALLY ILLUMINATED FACE LIT/HALO LIT CHANNEL LETTERS
- 2447 WHITE ACRYLIC FACES W/DIGITALY PRINTED GRAPHICS
 - MATCHING 7403 C & 476 C APPLIED 1ST SURFACE
 - 1IN TRIM CAP PRE-FINISHED BROWN
 - 4IN DEEP RETURNS PAINTED PANTONE 476 C
 - CLEAR POLYCARBONATE BACKS
 - 5000K WHT SLOAN

PANTONE 2410 C	PANERA GREEN PANTONE 2307 C C32 M2 Y100 K61 R104 G111 B18 HEX #686F12	PANERA SLATE PANTONE 7540 C C67 M54 Y46 K40 R75 G79 B84 HEX #4B4F54	SUN DAPPLE PANTONE 7403 C C5 M15 Y55 K0 R238 G212 B132 HEX #EED484
----------------	---	---	--



TYPICAL (MB LOGO) DETAIL



TYPICAL (LETTER) DETAIL

HILTONDISPLAYS
125 HILLSIDE DRIVE • GREENVILLE SC 29607
P 800 353 9132 • F 864 242 2204
www.hiltondisplays.com

QID 22-61829

JOB NAME

Panera 2406

LOCATION

1410 Ne Douglas St
Lees Summit MO 64086

CUSTOMER CONTACT

SALESMAN / PM

Sabrina Smith

DESIGNER

Glenn Miller

DWG. DATE

7-15-22

REV. DATE / REVISION

2-16-23

SCALE

FILE

2022/Panera/Locations/
Lees Summit MO/22-61829/
PB Lees Summit MO 22-61829

DESIGN SPECIFICATIONS ACCEPTED BY:

EST:	CLIENT:
SLS/PM:	LANDLORD:

THE INTENT OF THIS DRAWING IS TO SHOW A CONCEPTUAL REPRESENTATION OF THE PROPOSED SIGNAGE. DUE TO VARIATIONS IN PRINTING DEVICES AND SUBSTRATES, THE FINISHED PRODUCT MAY DIFFER SLIGHTLY FROM DRAWING.

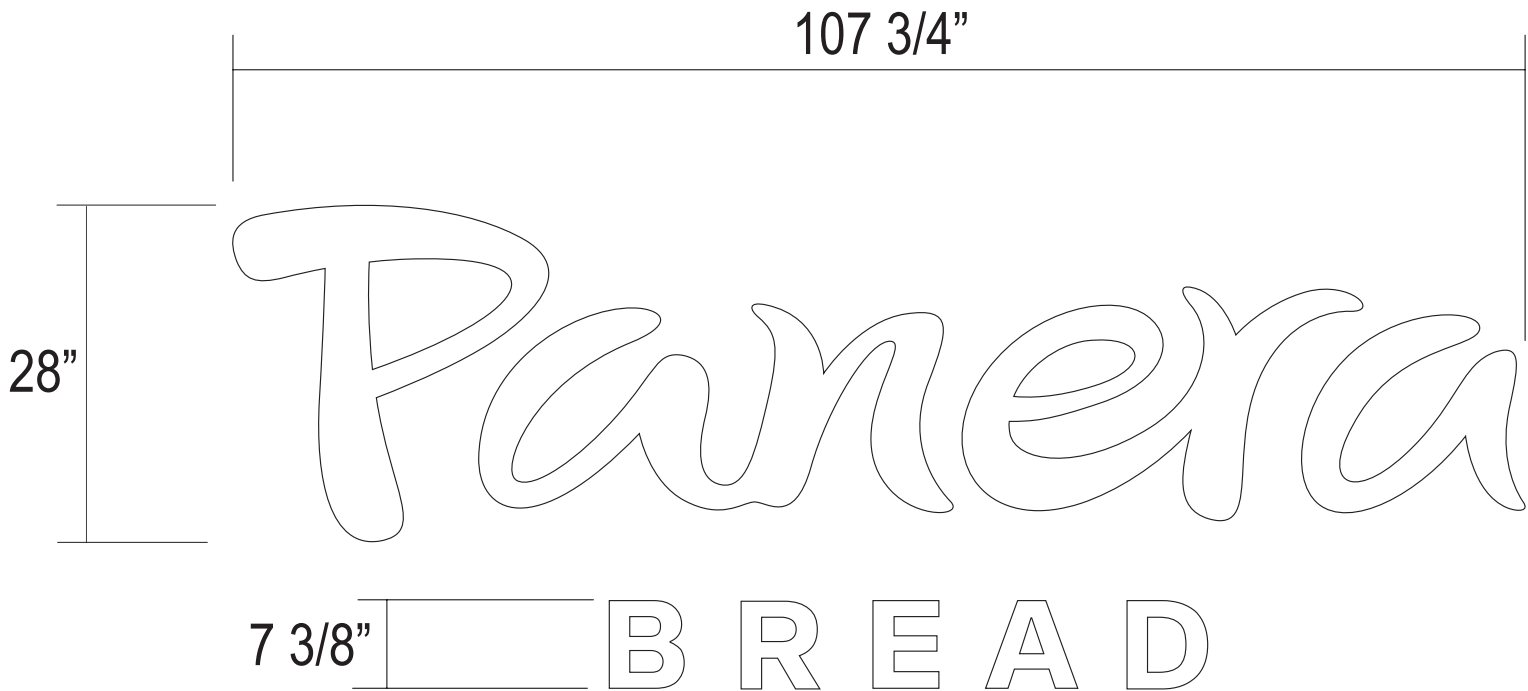


INTERNALLY ILLUMINATED FRONT LIT/HALO LIT CHANNEL LETTERS:

PAN-RCL-S2L-28-STK-NL-W

Qty. 2

B

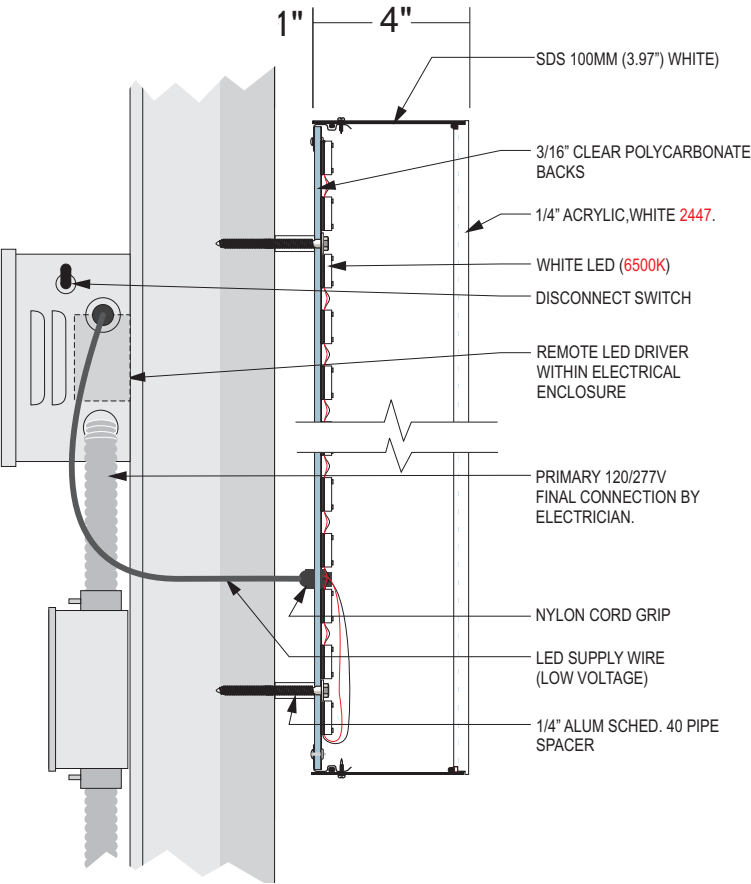


SCALE: 3/4" = 1'-0"

30.15 S/F

INTERNALLY ILLUMINATED FRONT LIT/HALO LIT CHANNEL LETTERS:

- “PANERA” “BREAD” LETTERS
- 2447 WHITE FACES WITH 3” DEEP CHANNELS PAINTED PANTONE 7540C SLATE
 - CLEAR LEXAN BACKS
 - 6500K SLOAN PRISM WHITE LED LIGHTING (PANERA)
 - TRIMLESS DESIGN
 - LETTERS PINNED OFF WALL 1”



TYPICAL (LETTER) DETAIL

HILTONDISPLAYS
125 HILLSIDE DRIVE • GREENVILLE SC 29607
P 800 353 9132 • F 864 242 2204
www.hiltondisplays.com

QID 22-61829

JOB NAME

Panera 2406

LOCATION

1410 Ne Douglas St
Lees Summit MO 64086

CUSTOMER CONTACT

SALESMAN / PM

Sabrina Smith

DESIGNER

Glenn Miller

DWG. DATE

7-15-22

REV. DATE / REVISION

2-16-23

SCALE

FILE

2022/Panera/Locations/
Lees Summit MO/22-61829/
PB Lees Summit MO 22-61829

DESIGN SPECIFICATIONS ACCEPTED BY:

EST:	CLIENT:
SLS/PM:	LANDLORD:

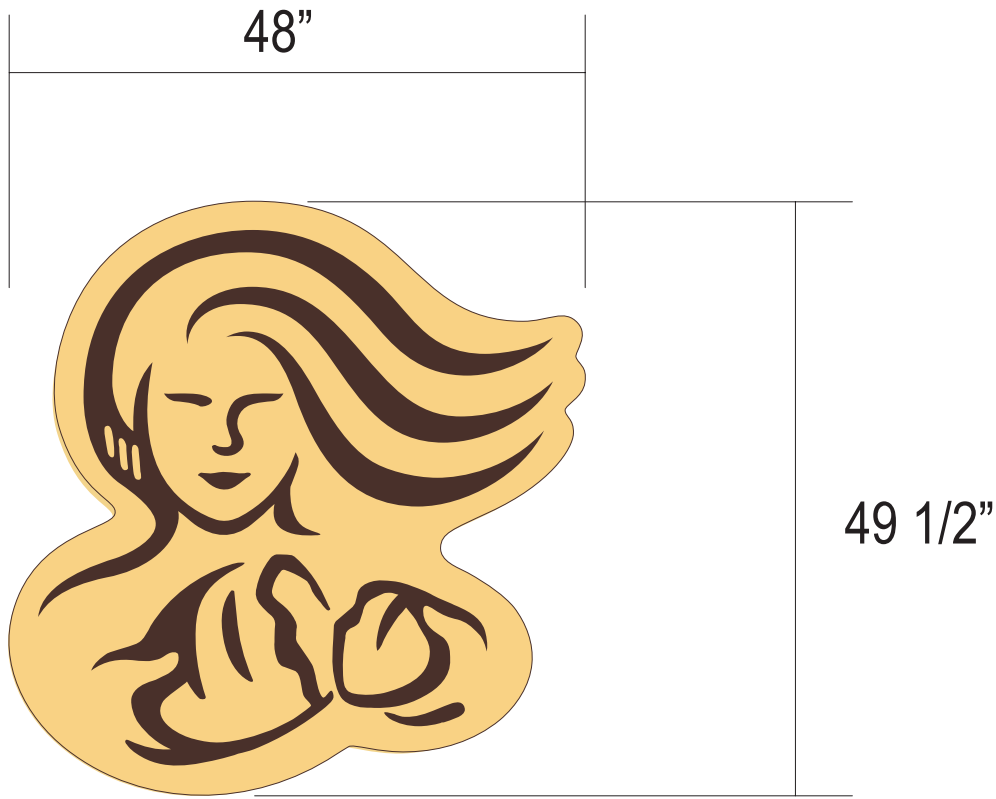
THE INTENT OF THIS DRAWING IS TO SHOW A CONCEPTUAL REPRESENTATION OF THE PROPOSED SIGNAGE. DUE TO VARIATIONS IN PRINTING DEVICES AND SUBSTRATES, THE FINISHED PRODUCT MAY DIFFER SLIGHTLY FROM DRAWING.



PANTONE 2410 C	PANERA GREEN PANTONE 2307 C C32 M2 Y100 K61 R104 G111 B18 HEX #686F12	PANERA SLATE PANTONE 7540 C C67 M54 Y46 K40 R75 G79 B84 HEX #4B4F54	SUN DAPPLE PANTONE 7403 C C5 M15 Y55 K0 R238 G212 B132 HEX #EED484
----------------	---	---	--

INTERNALLY ILLUMINATED FRONT LIT/HALO LIT LOGO:

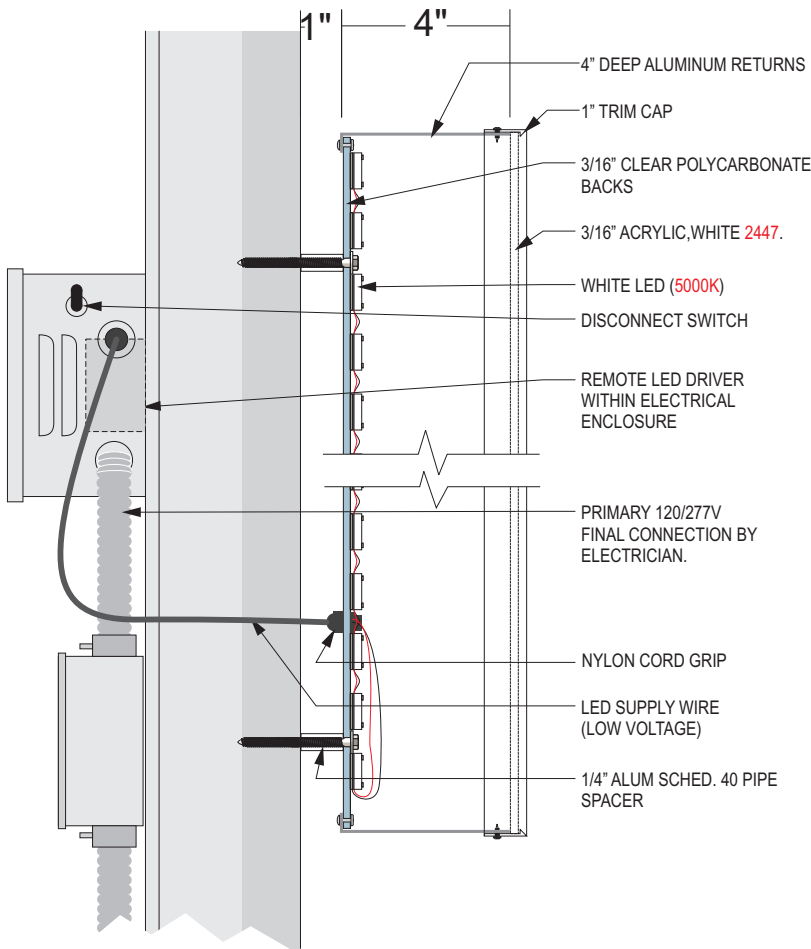
PAN-
Qty. 1
C



SCALE: 3/4" = 1'-0"
16.5 S/F

INTERNALLY ILLUMINATED FRONT LIT/HALO LIT LOGO:

- "MOTHER BREAD LOGO" (TRIM CAP DESIGN)
INTERNALLY ILLUMINATED FACE LIT/HALO LIT CHANNEL LETTERS
- 2447 WHITE ACRYLIC FACES W/DIGITALY PRINTED GRAPHICS
MATCHING 7403 C & 476 C APPLIED 1ST SURFACE
 - 1IN TRIM CAP PRE-FINISHED BROWN
 - 4IN DEEP RETURNS PAINTED PANTONE 476 C
 - CLEAR POLYCARBONATE BACKS
 - 5000K WHT SLOAN



TYPICAL (MB LOGO) DETAIL

HILTONDISPLAYS
125 HILLSIDE DRIVE • GREENVILLE SC 29607
P 800 353 9132 • F 864 242 2204
www.hiltondisplays.com

QID 22-61829

JOB NAME

Panera 2406

LOCATION

1410 Ne Douglas St
Lees Summit MO 64086

CUSTOMER CONTACT

SALESMAN / PM

Sabrina Smith

DESIGNER

Glenn Miller

DWG. DATE

7-15-22

REV. DATE / REVISION

2-16-23

SCALE

FILE

2022/Panera/Locations/
Lees Summit MO/22-61829/
PB Lees Summit MO 22-61829

DESIGN SPECIFICATIONS ACCEPTED BY:

EST:	CLIENT:
SLS/PM:	LANDLORD:

THE INTENT OF THIS DRAWING IS TO SHOW A CONCEPTUAL REPRESENTATION OF THE PROPOSED SIGNAGE. DUE TO VARIATIONS IN PRINTING DEVICES AND SUBSTRATES, THE FINISHED PRODUCT MAY DIFFER SLIGHTLY FROM DRAWING.



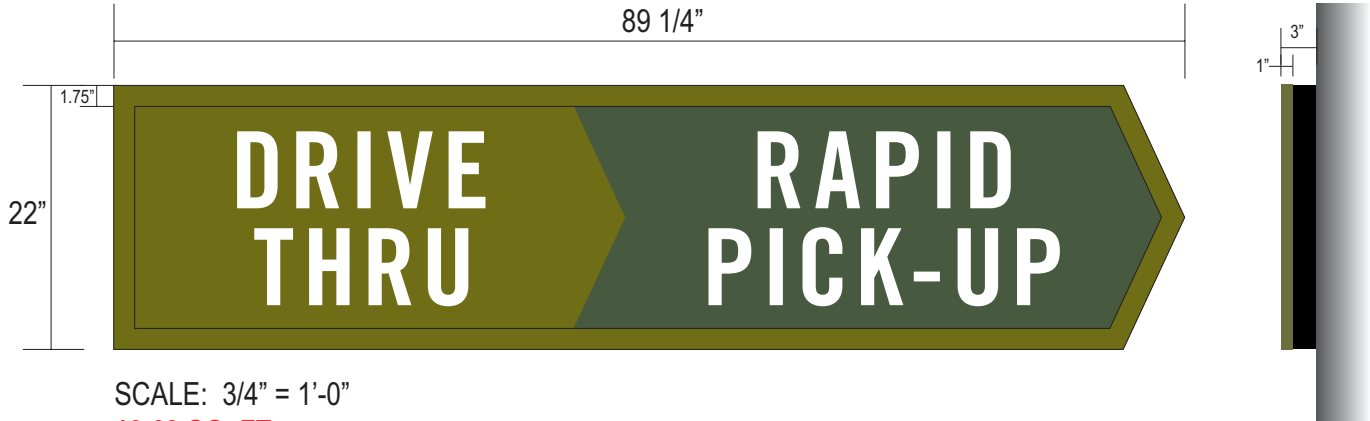
PANTONE 2410 C	PANERA GREEN PANTONE 2307 C C32 M2 Y100 K61 R104 G111 B18 HEX #686F12	PANERA SLATE PANTONE 7540 C C67 M54 Y46 K40 R75 G79 B84 HEX #4B4F54	SUN DAPPLE PANTONE 7403 C C5 M15 Y55 K0 R238 G212 B132 HEX #EED484
----------------	---	---	--

INTERNALLY ILLUMINATED "DRIVE THRU" WALL SIGN

PAN-DTRPU-2289-ILL-WS-2021

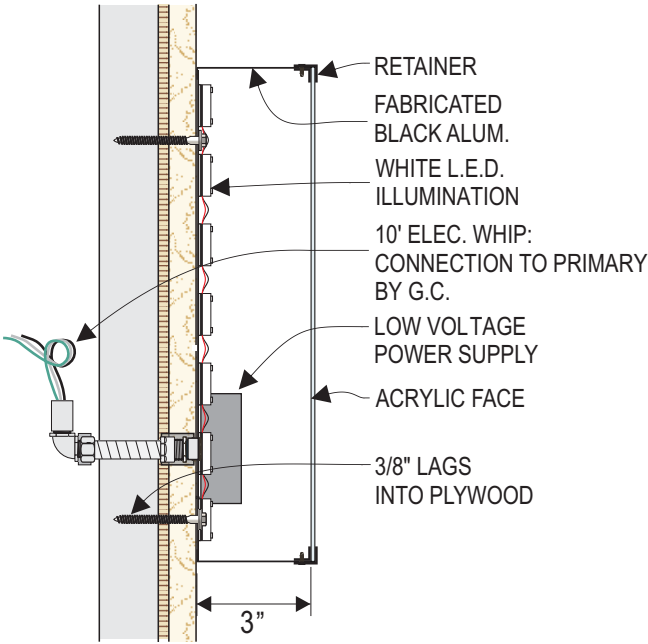
Qty. 3

D



INTERNALLY ILLUMINATED "DRIVE THRU" WALL SIGN:

- 3" DEEP RETURN PAINTED PAINTED SATIN BLACK
- 2.75" DEEP ALUMINUM CHANNEL RETAINER (1.75" FACE, 1" RETURN) PAINTED TO MATCH PANTONE 2307c
- WHITE ACRYLIC FACE WITH FIRST SURFACE DIGITAL PRINT
 - PANTONE 2307c GREEN BACKGROUND BEHIND DRIVE THRU
 - PANTONE 2410c GREEN BACKGROUND BEHIND RAPID PICK UP
 - WHITE DRIVE THRU COPY AND RAPID PICK UP
- SLOAN 6500K PRISM WHITE LED ILLUMINATION



DRIVE THRU CABINET
SIGN SECTION: N.T.S.

HILTONDISPLAYS

125 HILLSIDE DRIVE • GREENVILLE SC 29607

P 800 353 9132 • F 864 242 2204

www.hiltondisplays.com

QID 22-61829

JOB NAME

Panera 2406

LOCATION

1410 Ne Douglas St
Lees Summit MO 64086

CUSTOMER CONTACT

SALESMAN / PM

Sabrina Smith

DESIGNER

Glenn Miller

DWG. DATE

7-15-22

REV. DATE / REVISION

2-16-23

SCALE

FILE

2022/Panera/Locations/
Lees Summit MO/22-61829/
PB Lees Summit MO 22-61829

DESIGN SPECIFICATIONS ACCEPTED BY:

EST:	CLIENT:
SLS/PM:	LANDLORD:

THE INTENT OF THIS DRAWING IS TO SHOW A CONCEPTUAL REPRESENTATION OF THE PROPOSED SIGNAGE. DUE TO VARIATIONS IN PRINTING DEVICES AND SUBSTRATES, THE FINISHED PRODUCT MAY DIFFER SLIGHTLY FROM DRAWING.

UL

Underwriters
Laboratories Inc.

DRY

DAMP

WET

MENU BOARD

PAN-

Qty. 1

E

HILTONDISPLAYS

125 HILLSIDE DRIVE • GREENVILLE SC 29607
P 800 353 9132 • F 864 242 2204
www.hiltondisplays.com

QID 22-61829

JOB NAME

Panera 2406

LOCATION

1410 Ne Douglas St
Lees Summit MO 64086

CUSTOMER CONTACT

SALESMAN / PM

Sabrina Smith

DESIGNER

Glenn Miller

DWG. DATE

7-15-22

REV. DATE / REVISION

2-16-23

SCALE

FILE

2022/Panera/Locations/
Lees Summit MO/22-61829/
PB Lees Summit MO 22-61829

DESIGN SPECIFICATIONS ACCEPTED BY:

EST:	CLIENT:
SLS/PM:	LANDLORD:

THE INTENT OF THIS DRAWING IS TO SHOW A CONCEPTUAL REPRESENTATION OF THE PROPOSED SIGNAGE. DUE TO VARIATIONS IN PRINTING DEVICES AND SUBSTRATES, THE FINISHED PRODUCT MAY DIFFER SLIGHTLY FROM DRAWING.



PANTONE 2410 C	PANERA GREEN PANTONE 2307 C C32 M2 Y100 K61 R104 G111 B18 HEX #686F12	PANERA SLATE PANTONE 7540 C C67 M54 Y46 K40 R75 G79 B84 HEX #4B4F54	SUN DAPPLE PANTONE 7403 C C5 M15 Y55 K0 R238 G212 B132 HEX #EED484
----------------	---	---	--

PREVIEW MENU BOARD

PAN-
Qty. 1
F



PREVIEW MENU SIGN ELEVATION
SCALE: 3/4" = 1'-0"

DT005.A1

PANTONE 2410 C	PANERA GREEN PANTONE 2307 C C32 M2 Y100 K61 R104 G111 B18 HEX #686F12	PANERA SLATE PANTONE 7540 C C67 M54 Y48 K40 R75 G78 B84 HEX #4B4F54	SUN DAPPLE PANTONE 7403 C C5 M15 Y55 K0 R238 G212 B132 HEX #EED484
----------------	---	---	--

HILTONDISPLAYS
125 HILLSIDE DRIVE • GREENVILLE SC 29607
P 800 353 9132 • F 864 242 2204
www.hiltondisplays.com

QID 22-61829

JOB NAME

Panera 2406

LOCATION

1410 Ne Douglas St
Lees Summit MO 64086

CUSTOMER CONTACT

SALESMAN / PM

Sabrina Smith

DESIGNER

Glenn Miller

DWG. DATE

7-15-22

REV. DATE / REVISION

2-16-23

SCALE

FILE

2022/Panera/Locations/
Lees Summit MO/22-61829/
PB Lees Summit MO 22-61829

DESIGN SPECIFICATIONS ACCEPTED BY:

EST:	CLIENT:
SLS/PM:	LANDLORD:

THE INTENT OF THIS DRAWING IS TO SHOW A CONCEPTUAL REPRESENTATION OF THE PROPOSED SIGNAGE. DUE TO VARIATIONS IN PRINTING DEVICES AND SUBSTRATES, THE FINISHED PRODUCT MAY DIFFER SLIGHTLY FROM DRAWING.

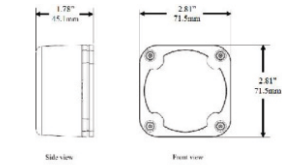
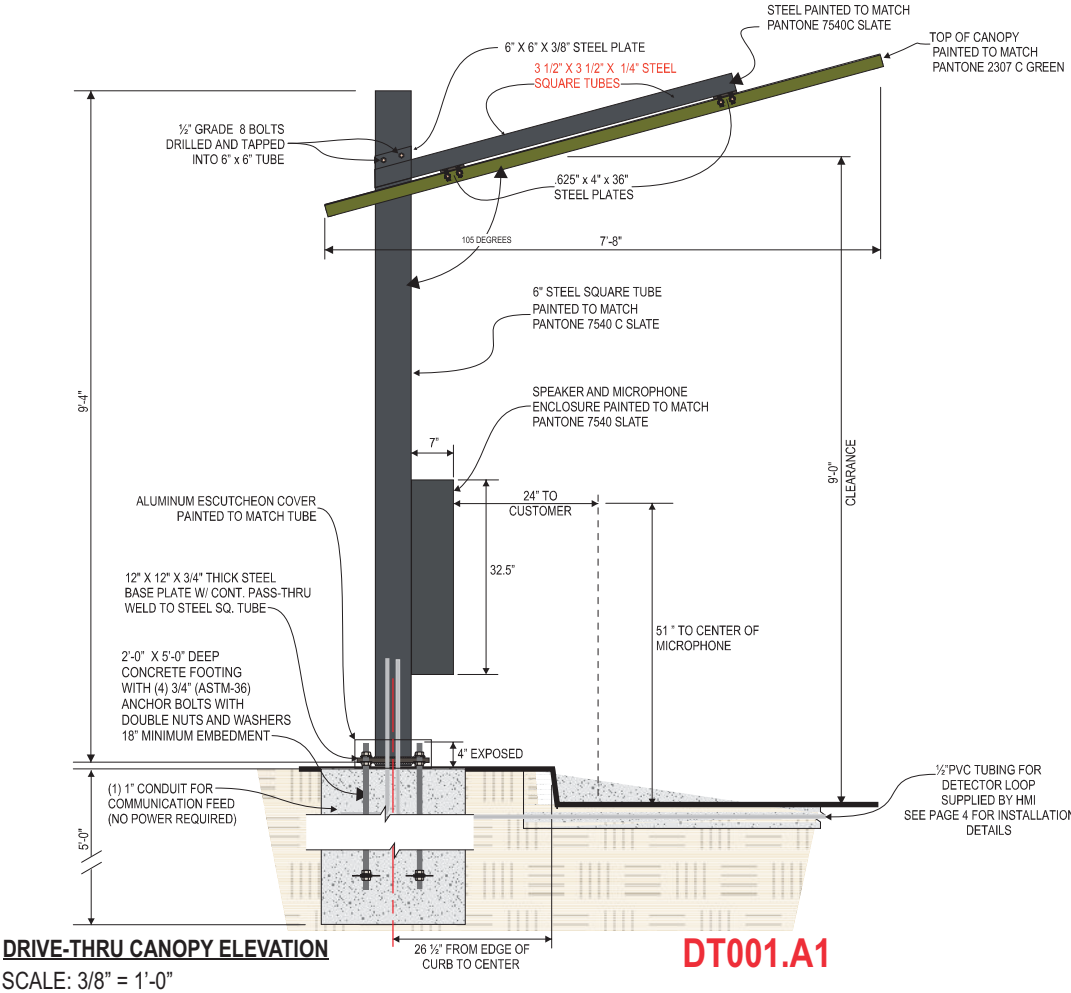


CANOPY

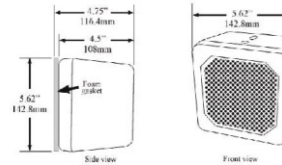
PAN-

Qty. 1

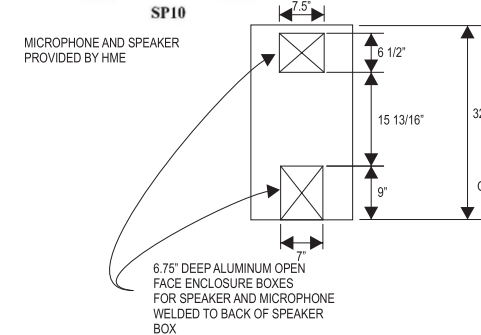
G



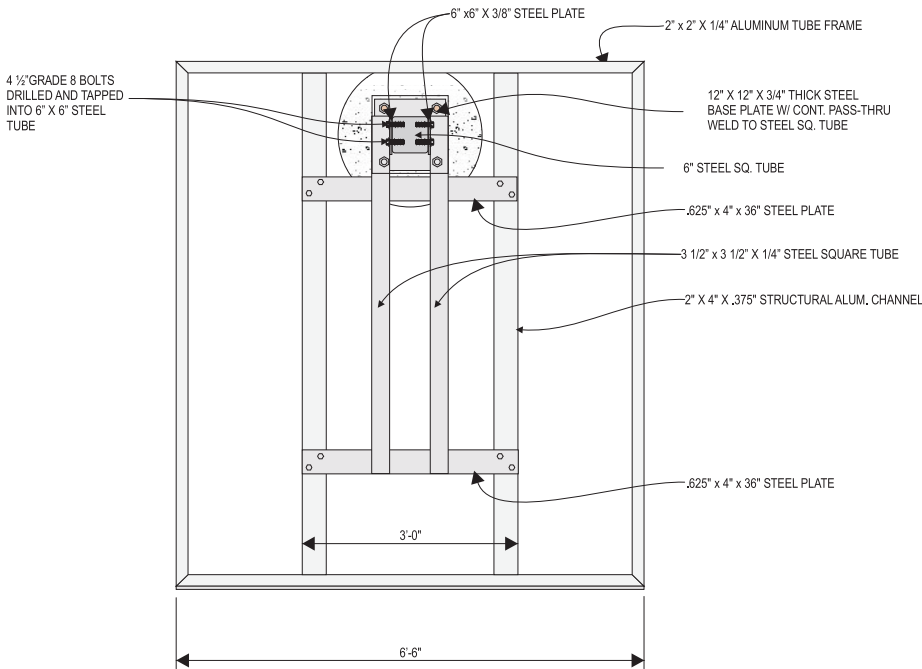
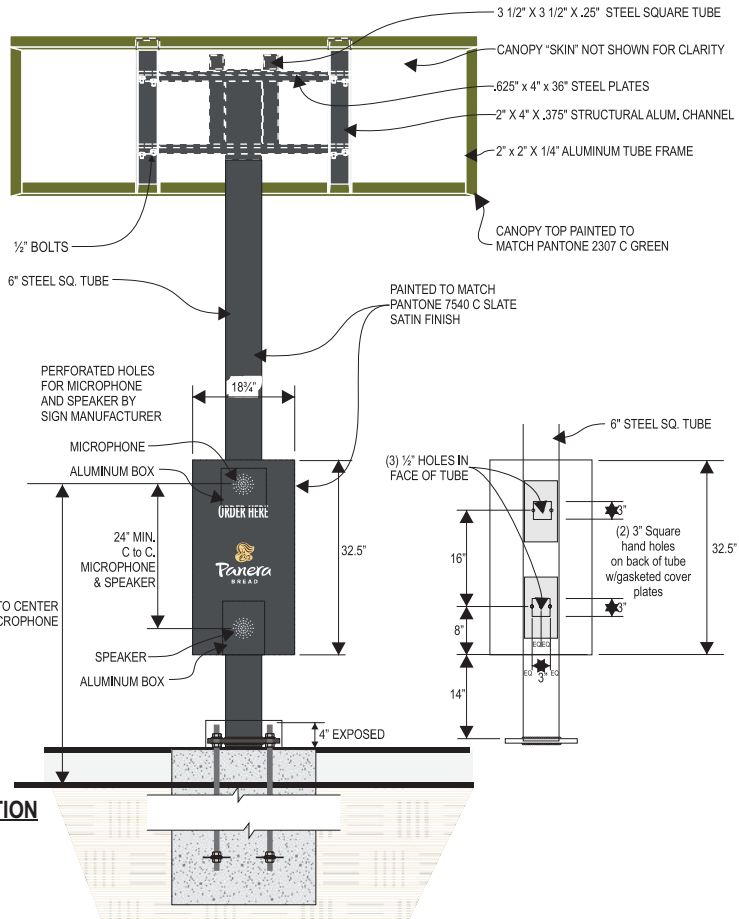
NOTE: A flange enclosure is provided with the DM5. Measurements of the flange are 12.78" x 12.78" x .41.25" (320.8mm x 320.8mm x 10.5mm).



MICROPHONE AND SPEAKER PROVIDED BY HMI



DRIVE-THRU CANOPY ELEVATION
SCALE: 3/8" = 1'-0"



PANTONE 2410 C	PANERA GREEN PANTONE 2307 C C32 M2 Y100 K61 R104 G111 B18 HEX #686F12	PANERA SLATE PANTONE 7540 C C67 M54 Y48 K40 R75 G79 B84 HEX #4B4F54	SUN DAPPLE PANTONE 7403 C C5 M15 Y55 K0 R238 G212 B132 HEX #EED484
----------------	---	---	--

HILTONDISPLAYS

125 HILLSIDE DRIVE • GREENVILLE SC 29607
P 800 353 9132 • F 864 242 2204
www.hiltondisplays.com

QID 22-61829

JOB NAME

Panera 2406

LOCATION

1410 Ne Douglas St
Lees Summit MO 64086

CUSTOMER CONTACT

SALESMAN / PM

Sabrina Smith

DESIGNER

Glenn Miller

DWG. DATE

7-15-22

REV. DATE / REVISION

2-16-23

SCALE

FILE

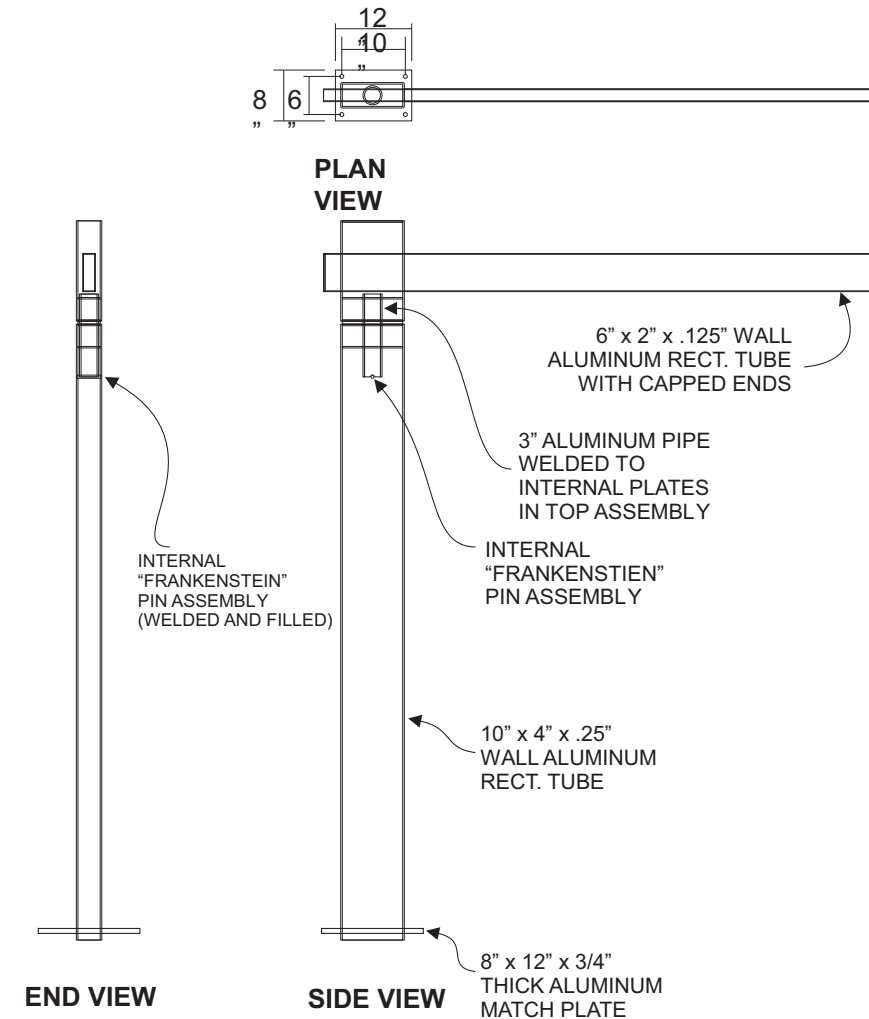
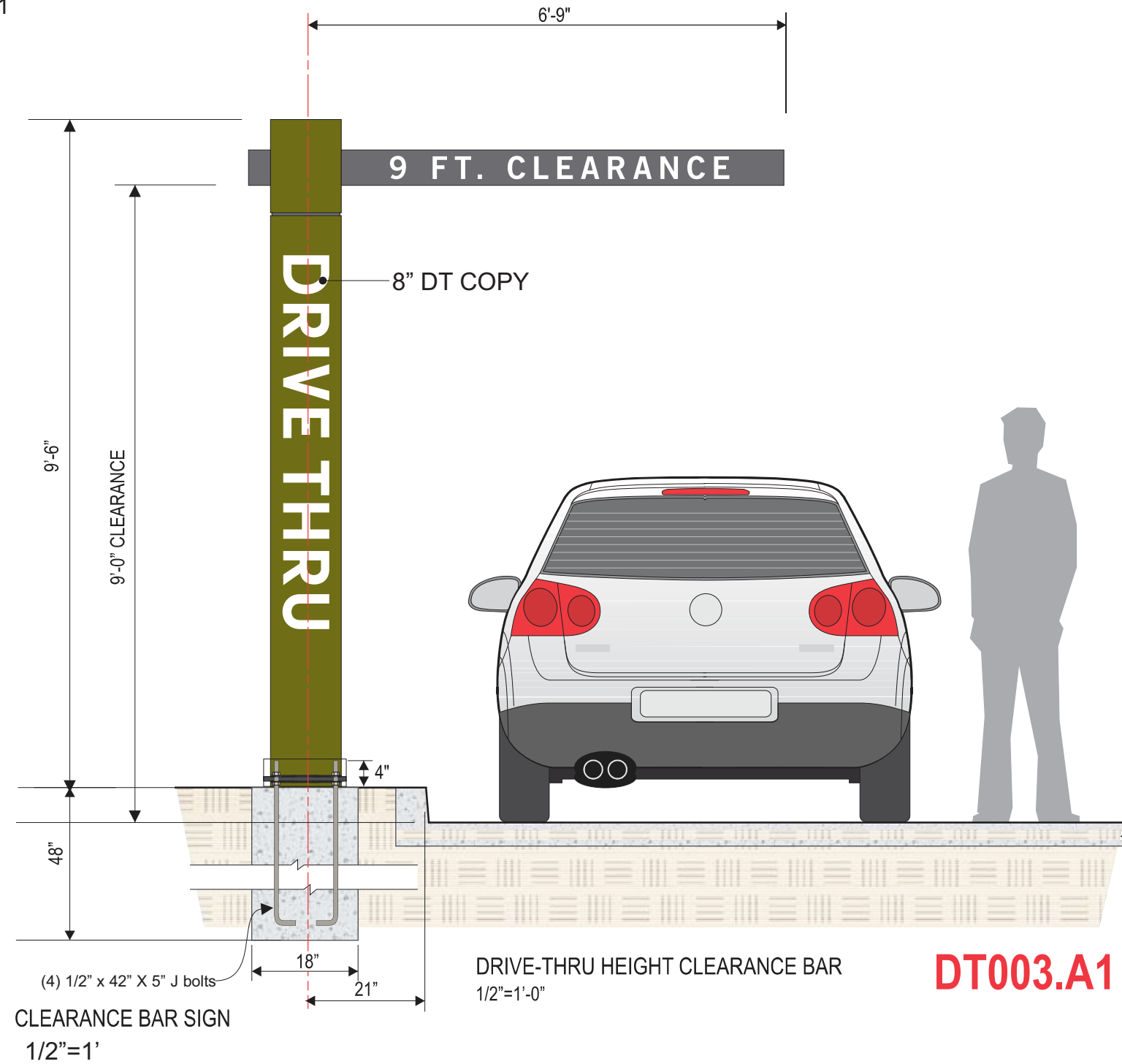
2022/Panera/Locations/
Lees Summit MO/22-61829/
PB Lees Summit MO 22-61829

DESIGN SPECIFICATIONS ACCEPTED BY:

EST:	CLIENT:
SLS/PM:	LANDLORD:

THE INTENT OF THIS DRAWING IS TO SHOW A CONCEPTUAL REPRESENTATION OF THE PROPOSED SIGNAGE. DUE TO VARIATIONS IN PRINTING DEVICES AND SUBSTRATES, THE FINISHED PRODUCT MAY DIFFER SLIGHTLY FROM DRAWING.

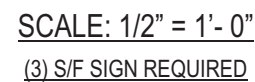




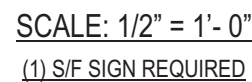
PANERA SLATE
PANTONE 7540 C
C67 M54 Y46 K40
R75 G79 B84
HEX #4B4F54



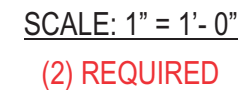
Qty. 8 TOTAL



6" schedule 40 steel pipe



1.66" O.D. 14 Gauge Sign Post,
Hi-Density Polyethylene Thermoplastic Silver finish
1.90" O.D. 1/8" Nominal Wall Thickness
w/Ultra-Violet and Anti-Static Additives
Plastic Cap
Standard 3/8" Holes



- WHITE .080 ALUMINUM PANELS
(DO NOT PRE-DRILL HOLES)
- REFLECTIVE, DIGITALLY PRINTED VINYL GRAPHICS
WITH CLEAR OVERLAMINATE
- 10' HEAVY DUTY U-IRON SUPPORT POSTS
- FREE FORMED CONCRETE FOOTINGS

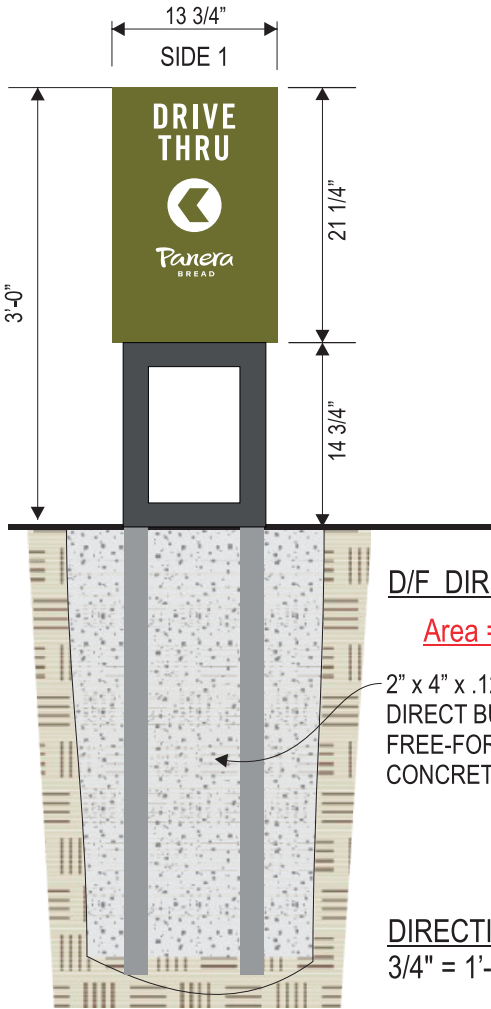
PANTONE 2410 C	PANERA GREEN	PANERA SLATE	SUN DAPPLE
	PANTONE 2307 C	PANTONE 7540 C	PANTONE 7403 C
	C32 M2 Y100 K61	C67 M54 Y46 K40	C5 M15 Y55 K0
	R104 G111 B18	R75 G79 B84	R238 G212 B132
	HEX #686F12	HEX #484F54	HEX #EE0484



NON-ILLUMINATED DIRECTIONAL SIGNS:

36" DT DIRECTIONAL

PAN-
Qty. 1
L



D/F DIRECTIONAL SIGN

Area = 2.00 sq.ft each

2" x 4" x .125 ALUMINUM TUBE
DIRECT BURIAL IN
FREE-FORMED
CONCRETE FOOTING

DIRECTIONAL SIGNS
3/4" = 1'-0"



SW212.B1

36" TY/EO DIRECTIONAL

PAN-
Qty. 1
M



SW212.E1

NON ILLUMINATED DIRECTIONAL SIGNS:

- 4" DEEP ALUM. PANEL CONSTRUCTION PAINTED TO MATCH PANTONE 2307 C (STAIN FINISH)
- .090 ALUMINUM FACES
- DIGITALLY PRINTED GRAPHICS ON REFLECTIVE PSV (VINYL)
- COLORS AS SHOWN: WHITE & PMS 7403U PEACH & PANTONE 2410 C
- PANTONE 7540 SHROUD WITH 2" x 2" x 1/8" WALL ALUM. SQ. TUBE POSTS
- DIRECT BURIAL IN FREE-FORMED CONCRETE FOOTING

HILTONDISPLAYS
125 HILLSIDE DRIVE • GREENVILLE SC 29607
P 800 353 9132 • F 864 242 2204
www.hiltondisplays.com

QID 22-61829

JOB NAME

Panera 2406

LOCATION

1410 Ne Douglas St
Lees Summit MO 64086

CUSTOMER CONTACT

SALESMAN / PM

Sabrina Smith

DESIGNER

Glenn Miller

DWG. DATE

7-15-22

REV. DATE / REVISION

2-16-23

SCALE

FILE

2022/Panera/Locations/
Lees Summit MO/22-61829/
PB Lees Summit MO 22-61829

DESIGN SPECIFICATIONS ACCEPTED BY:

EST:	CLIENT:
SLS/PM:	LANDLORD:

THE INTENT OF THIS DRAWING IS TO SHOW A CONCEPTUAL REPRESENTATION OF THE PROPOSED SIGNAGE. DUE TO VARIATIONS IN PRINTING DEVICES AND SUBSTRATES, THE FINISHED PRODUCT MAY DIFFER SLIGHTLY FROM DRAWING.



PANTONE 2410 C

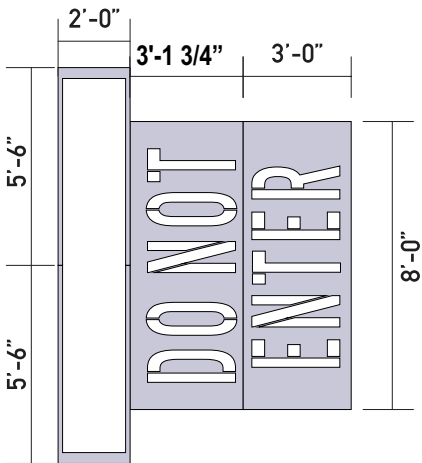
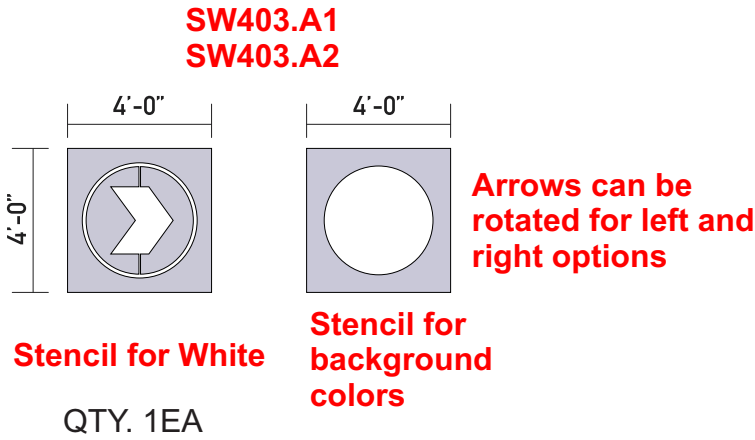
PANERA GREEN
PANTONE 2307 C
C32 M2 Y100 K61
R104 G111 B18
HEX #686F12

PANERA SLATE
PANTONE 7540 C
C67 M54 Y46 K40
R75 G79 B84
HEX #4B4F54

SUN DAPPLE
PANTONE 7403 C
C5 M15 Y55 K0
R238 G212 B132
HEX #EED484

DRIVE -THRU MARKING TEMPLATES

HD IS RESPONSIBLE FOR TEMPLATES ONLY
* SIZES ARE SITE SPECIFIC AND MAY VARY PER LOCATION



QTY. 1EA

SW406.A1

SW406.A1

SW406.A1



SCALE: 3/16"=1'-0"

HILTONDISPLAYS
125 HILLSIDE DRIVE • GREENVILLE SC 29607
P 800 353 9132 • F 864 242 2204
www.hiltondisplays.com

QID 22-61829

JOB NAME

Panera 2406

LOCATION

1410 Ne Douglas St
Lees Summit MO 64086

CUSTOMER CONTACT

SALESMAN / PM

Sabrina Smith

DESIGNER

Glenn Miller

DWG. DATE

7-15-22

REV. DATE / REVISION

2-16-23

SCALE

FILE

2022/Panera/Locations/
Lees Summit MO/22-61829/
PB Lees Summit MO 22-61829

DESIGN SPECIFICATIONS ACCEPTED BY:

EST:	CLIENT:
SLS/PM:	LANDLORD:

THE INTENT OF THIS DRAWING IS TO SHOW A CONCEPTUAL REPRESENTATION OF THE PROPOSED SIGNAGE. DUE TO VARIATIONS IN PRINTING DEVICES AND SUBSTRATES, THE FINISHED PRODUCT MAY DIFFER SLIGHTLY FROM DRAWING.

