

Spacing Charts Based on MUTCD				Must be Approved by an Engineer			
Speed (MPH) Prior To Road Work	SIGN SPACING, FT.		BUFFER SPACE, FT.	TAPER LENGTH, FT.		CHANNELIZING SPACING, FT.	
	Non-Divided Highways	Divided Highways		Shoulder (10 ft width)	Lane (12 ft width)	Through Taper	Through Buffer/Work Area
0-35	200	200	250	70	245	35	50
40-45	350	500	360	150	540	40	80
50-55	500	1000	495	185	660	50	100
60-70	SA-1000, SB-1500, SC-2640		730	235	840	60	120
Urban Low Speed - 100 FT							



Date: 4/7/23 Author: Steelewise, Inc. Project: NW Chipman Rd & View High Dr - Phase 4
Traffic Control Suggestion For : LanTel KC Job #: 15654 By: Brandon

Comments:
Drawing not to scale. Traffic control plan must be approved by an engineer. This is a suggestion only. Steelewise, Inc. has no liability for this suggested traffic control plan.
Actual placement and spacing of all traffic control devices will depend on field conditions and must conform to MUTCD standards.



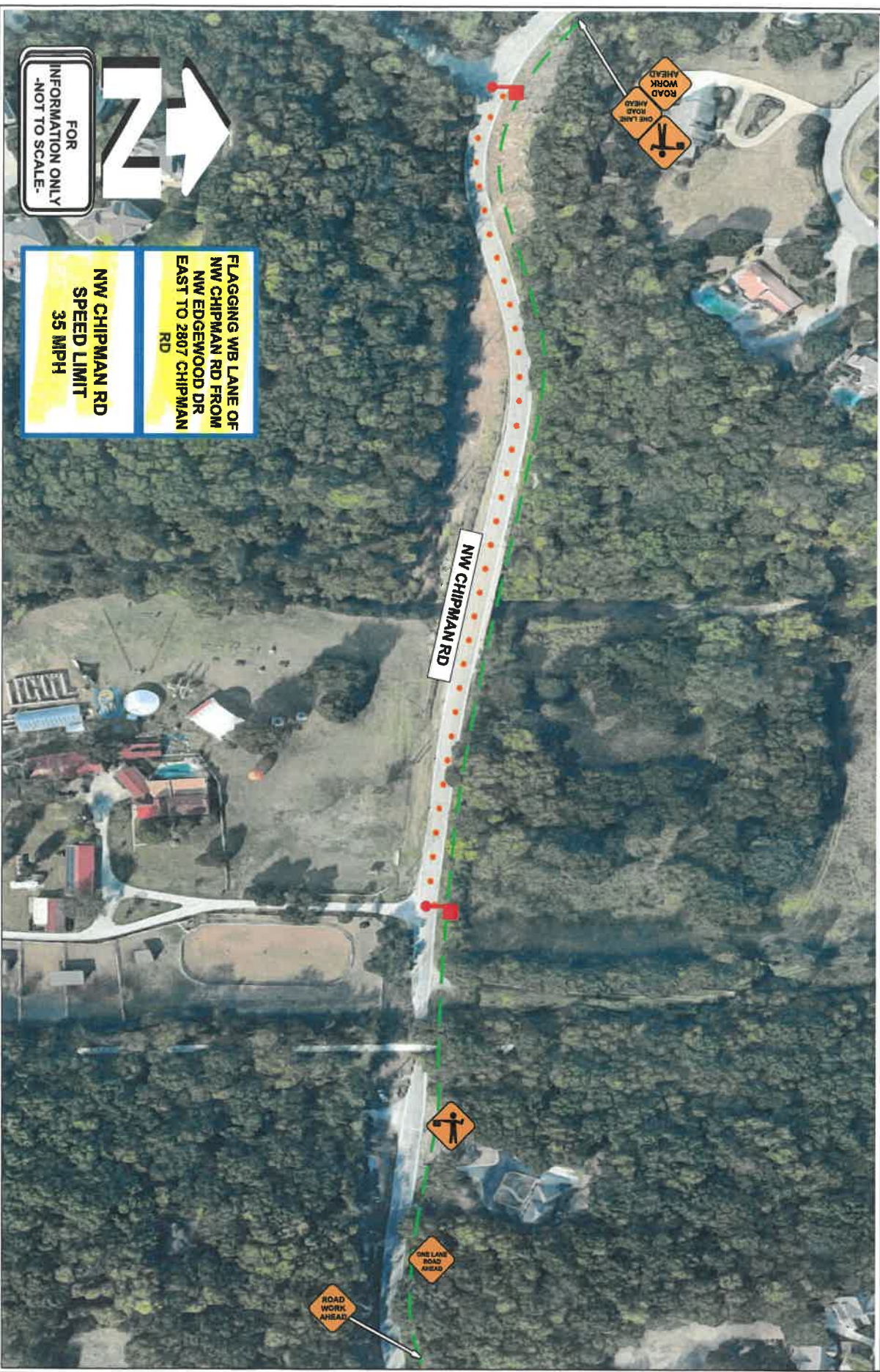
Spacing Charts Based on MUTCD			Must be Approved by an Engineer			
Speed (MPH) Prior To Road Work	SIGN SPACING, FT.		BUFFER SPACE, FT.		CHANNELIZING SPACING, FT.	
	Non-Divided Highways	Divided Highways	Length	Shoulder (10 ft width)	Lane (12 ft width)	Through Buffer/Work Area
0-35	200	200	250	70	245	35
40-45	350	500	360	150	540	40
50-55	500	1000	495	185	660	50
60-70	SA-1000, SB-1500, SC-2640		730	235	840	60
Urban Low Speed - 100 FT						120



Date: 4/7/23 Author: StreeWise, Inc. Project: NW Chipman Rd & View High Dr - Phase 3
Traffic Control Suggestion For : LanTel Co Job #: 15654 By: Brandon

Comments:

Drawing not to scale. Traffic control plan must be approved by an engineer. This is a suggestion only. StreeWise, Inc. has no liability for this suggested traffic control plan. Actual placement and spacing of all traffic control devices will depend on field conditions and must conform to MUTCD standards.



Spacing Charts Based on MUTCD		Must be Approved by an Engineer			
Speed (MPH) Prior To Road Work	SIGN SPACING, FT.		TAPER LENGTH, FT.	CHANNELIZING SPACING, FT.	
	Non-Divided Highways	Divided Highways		Through Buffer/Work Area	Through Buffer/Work Area
0-35	200	200	70	35	50
40-45	350	500	150	40	80
50-55	500	1000	185	50	100
60-70	SA-1000, SB-1500, SC-2640	730	235	80	120
Urban Low Speed - 100 FT					



Date: 4/17/23 Author: Streetsw's, Inc. Project: NW Chipman Rd & View High Dr - Phase 2
Traffic Control Suggestion For : LanTel KC Job #: 15554 By: Brandon

Comments:
Drawing not to scale. Traffic control plan must be approved by an engineer. This is a suggestion only. Streetsw's, Inc. has no liability for this suggested traffic control plan.
Actual placement and spacing of all traffic control devices will depend on field conditions and must conform to MUTCD standards.



FLAGGING WB LANE OF
NW CHIPMAN RD FROM
11800 CHIPMAN RD
EAST TO NW
EDGEWOOD DR

NW CHIPMAN RD
SPEED LIMIT
35 MPH

FOR
INFORMATION ONLY
-NOT TO SCALE-

Drawing not to scale. Traffic control plan must be approved by an engineer. This is a suggestion only. Streetwise, Inc. has no liability for this suggested traffic control plan. Actual placement and spacing of all traffic control devices will depend on field conditions and must conform to MUTCD standards.

