

Job Description: Lee's Summit Commerce Center - MEXTE

Region: South

Sector: 1202

Maximo Work Order: 25723783

TownCode:0901

Project #: 805519



**SYSTEM PLANNING:**

- FLOW ARROWS REFLECT GAS FEED PRIOR TO THIS WO

**GAS CONTROL**

- THERE ARE NO SYSTEM CONTROL CONCERNS WITH THIS WO

**CONSTRUCTION ENGINEERING:**

- THERE ARE NO CONSTRUCTION ENGINEERING CONCERNS FOR THIS WORK ORDER

1. INSTALL AND ABANDON STEEL AND PLASTIC MAIN AND SERVICES PER SPIRE OPM STANDARDS.
2. SEE STD. 200.0 FOR PRESSURE TESTING PIPING REQUIREMENTS
3. SEE STD. 180.B FOR EFV AND/OR MANUAL SHUTOFF VALVE INSTALLATION REQUIREMENTS
4. SEE STD. 170.I AND 190.G FOR TRACE WIRE AND TEST STATION INSTALLATION INFORMATION.
5. CORROSION PROTECTION INSPECTOR TO CHECK CATHODIC PROTECTION OF ALL EXISTING CATHODICALLY PROTECTED FACILITIES EXPOSED AND PROTECTED FACILITIES EXPOSED AND DIRECT STEPS NECESSARY TO MAINTAIN PROPER ISOLATION AND CATHODIC PROTECTION AS REQUIRED. A PIPE OBSERVATION REPORT IS TO BE CREATED IN MAXIMO ON READINGS
6. INSTALL ANODES PER STD. 190.C AND/OR TEST STATIONS PER STD. 190.G PER INSTRUCTIONS FROM CORROSION PROTECTION INSPECTOR.
7. CONDUCT INITIAL CATHODIC PROTECTION SURVEY FOR NEW STEEL INSTALLATION. (See 190.I for Cathodic Protection at Tie Ins)
8. CREATE PIPE OBSERVATIONS IN MAXIMO TO DOCUMENT EXPOSED PIPE CONDITIONS PER STD. 190.A, External Corrosion. 0.
9. FOR UTILITY LOCATES, CALL ONE-CALL SYSTEM "811"OR (1-800-344-7483), AND ALL OTHER AFFECTED UTILITIES
10. CONTACT GIS DEPARTMENT FOR NECESSARY FIELD NOTES AT 314-349-2963.
11. CONTACT ROW TO SECURE NECESSARY EASEMENTS AND FOR ANY SURVEY WORK@ (314-658-5497 OR 314-349-2933)
12. SEE STD. 170.J FOR SQUEEZE-OFF PROCEDURE
13. SEE STD. 170.A FOR GAS INTERRUPTION PROCEDURE REQUIREMENTS. CONTACT SYSTEM CONTROL AT 314-658-5486 OR 314-658-5488 PRIOR TO ANY WORK
14. SEE STD. 150.A and 150.E FOR RADIOGRAPHIC EXAMINATION REQUIREMENTS
15. SPIRE PERSONNEL SHOULD FOLLOW STANDARD PRECAUTIONS REGARDING THE POTENTIAL FOR DRIP OIL TO BE PRESENT IN ACTIVE GAS MAINS AND ADHERE TO APPROVED PROCEDURES FOR MANAGEMENT/DISPOSAL OF ANY PIECES OF PIPE GENERATED IN THE COURSE OF ABANDONMENT. ANY DOCUMENTED DRIPS SHOULD BE CLEARED AND DRAINED BEFORE ABANDONMENT.

**PIPE SYSTEM**  
PRESSURE SYS - C-012  
MOP - 44 PSIG  
MAOP - 44 PSIG  
DESIGNED MAOP - 60 PSIG  
TEST PRESSURE - 100 PSIG

**ENVIRONMENTAL:**

- THERE ARE NO ENVIRONMENTAL CONCERNS WITH THIS WORK ORDER

**PIPELINE SAFETY AND COMPLIANCE/ CP:**

- THERE ARE NO PIPELINE SAFETY AND COMPLIANCE CONCERNS FOR THIS WORK ORDER

Main & Service

- Existing
- Install
- Proposed
- Abandon
- Gas Pipe Casing

Gas Valve

- ⊗ Ball
- ⊗ Butterfly
- ⊗ Gate
- ⊗ Plug
- ⊗ Blow Down



Take Point



Drip



Test Station



Regulator Station



Meter Setting



Marker Post



Electronic Marker



Service Tee



Stopper / Bottom Outlet



Coupling



Insulated Coupling



Trace Wire Box

• End Cap

|| Flange

|| Insulated Flange

+ Cross

▷ Reducer

┴ Tee

~ Vertical Ell

• Bend

— Exposed Pipe

▽ Rectifier

— Rectifier Cable

— SteamLines

Street Car Tracks

RCP Reinforced Concrete Pipe

CMP Corrugated Metal Pipe

Contamination

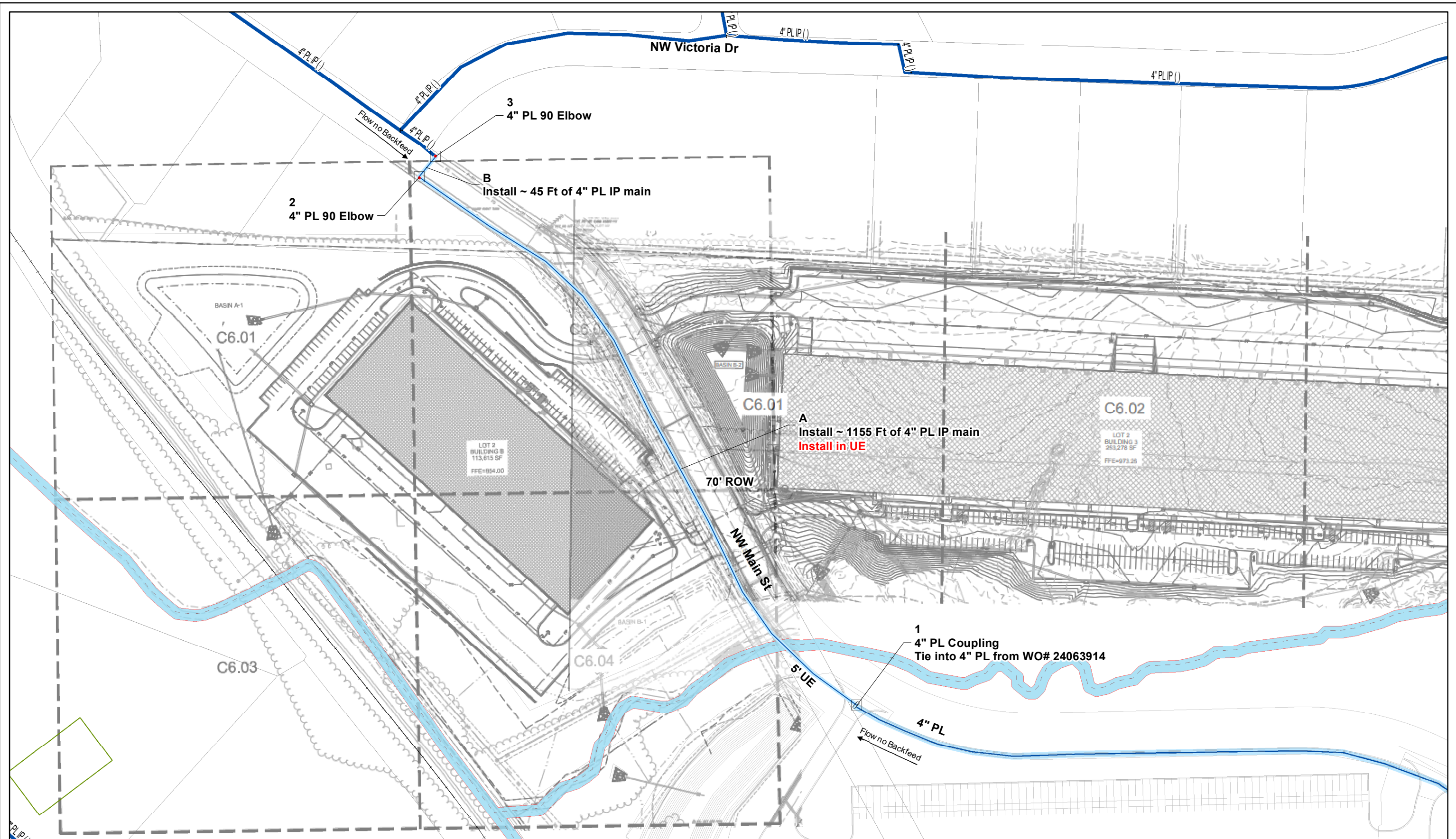
DNR Tanks

DNR Remediation

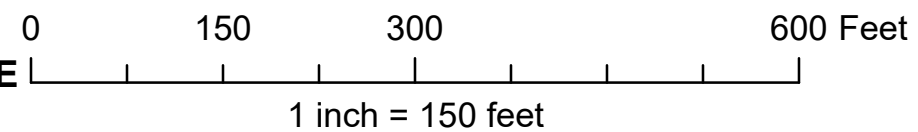
Check for  
Work Order Authorization

Designer :	Revision Date(s):
BKW	
Original Date:	
12-5-22	





Job Description: Lee's Summit Commerce Center - MEXTE



Maximo Work Order: 25723783  
Project #: 805519



PAGE 2 OF 2



Job Description: Lee's Summit Commerce Center - MEXTE

Region: South

Sector: 1202

Maximo Work Order: 25723783

TownCode: 0901

Project #: 805519



PRESSURE TEST OF GAS MAINS  
(One Test Per Sheet)

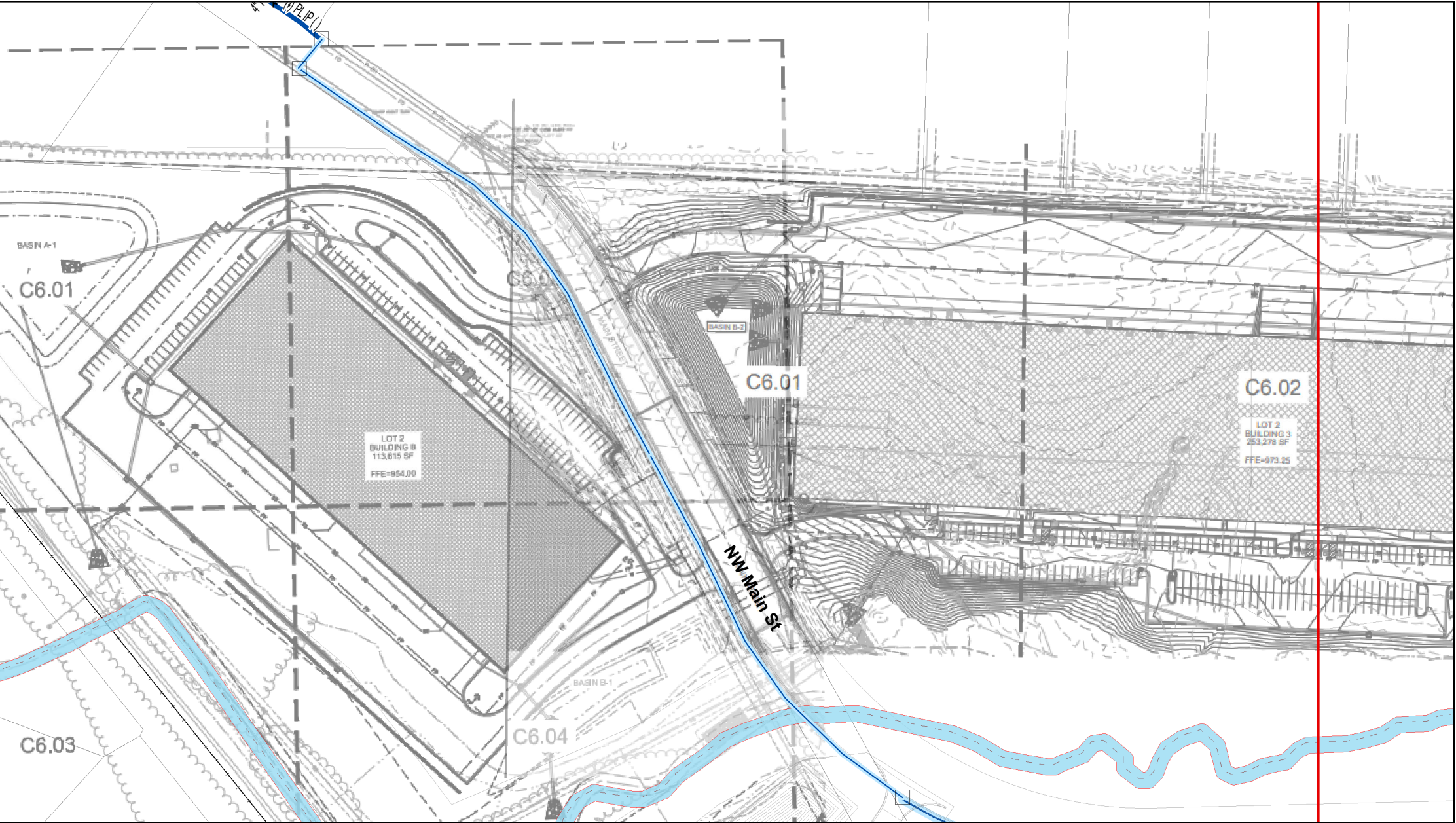
Tie-in Number \_\_\_\_\_  
Soap Test ☐ Yes ☐ No  
Date: \_\_\_\_\_  
Time: \_\_\_\_\_  
System Gauge Pressure: \_\_\_\_\_  
Signature: \_\_\_\_\_

Tie-in Number \_\_\_\_\_  
Soap Test ☐ Yes ☐ No  
Date: \_\_\_\_\_  
Time: \_\_\_\_\_  
System Gauge Pressure: \_\_\_\_\_  
Signature: \_\_\_\_\_

Tie-in Number \_\_\_\_\_  
Soap Test ☐ Yes ☐ No  
Date: \_\_\_\_\_  
Time: \_\_\_\_\_  
System Gauge Pressure: \_\_\_\_\_  
Signature: \_\_\_\_\_

Tie-in Number \_\_\_\_\_  
Soap Test ☐ Yes ☐ No  
Date: \_\_\_\_\_  
Time: \_\_\_\_\_  
System Gauge Pressure: \_\_\_\_\_  
Signature: \_\_\_\_\_

Tie-in Number \_\_\_\_\_  
Soap Test ☐ Yes ☐ No  
Date: \_\_\_\_\_  
Time: \_\_\_\_\_  
System Gauge Pressure: \_\_\_\_\_  
Signature: \_\_\_\_\_



Pipe Size: \_\_\_\_\_

Length (ft): \_\_\_\_\_

Pipe Size: \_\_\_\_\_

Length (ft): \_\_\_\_\_

Pipe Size: \_\_\_\_\_

Length (ft): \_\_\_\_\_

Pressure System: TF \ SF \ FP \ HP \ IP \ MP \ LP

Test Medium: Water \ Air \ Gas Other: \_\_\_\_\_

Gauge Type: Recording

Indicating

Dead Weight

Gauge I.D. : \_\_\_\_\_

\_\_\_\_\_

\_\_\_\_\_

Calib. Date : \_\_\_\_\_

\_\_\_\_\_

\_\_\_\_\_

Test Date: \_\_\_\_\_

\_\_\_\_\_

Start Time: \_\_\_\_\_

End Time: \_\_\_\_\_

Start Press.: \_\_\_\_\_

End Press. : \_\_\_\_\_

Start Temp.\*: \_\_\_\_\_

End Temp.\*: \_\_\_\_\_

\* Water or Pipe temperature, not ambient

If Discharge volume is over 1,000 gallons - Contact Lab for sample collection.

Note all leaks or failures, including cause, and corrective action taken in comments below.

SEE STD #200.0 FOR PRESSURE TESTING OF MAIN REQUIREMENTS.

FOR ANY QUESTIONS REGARDING THE STANDARD, PLEASE CONTACT PIPELINE SAFETAY AND COMPLIANCE AT 314-341-0537 OR 816-266-3033.

Conducted By:

Signature: \_\_\_\_\_

Date: \_\_\_\_\_

Printed Name: \_\_\_\_\_

Comments: \_\_\_\_\_

\_\_\_\_\_

\_\_\_\_\_