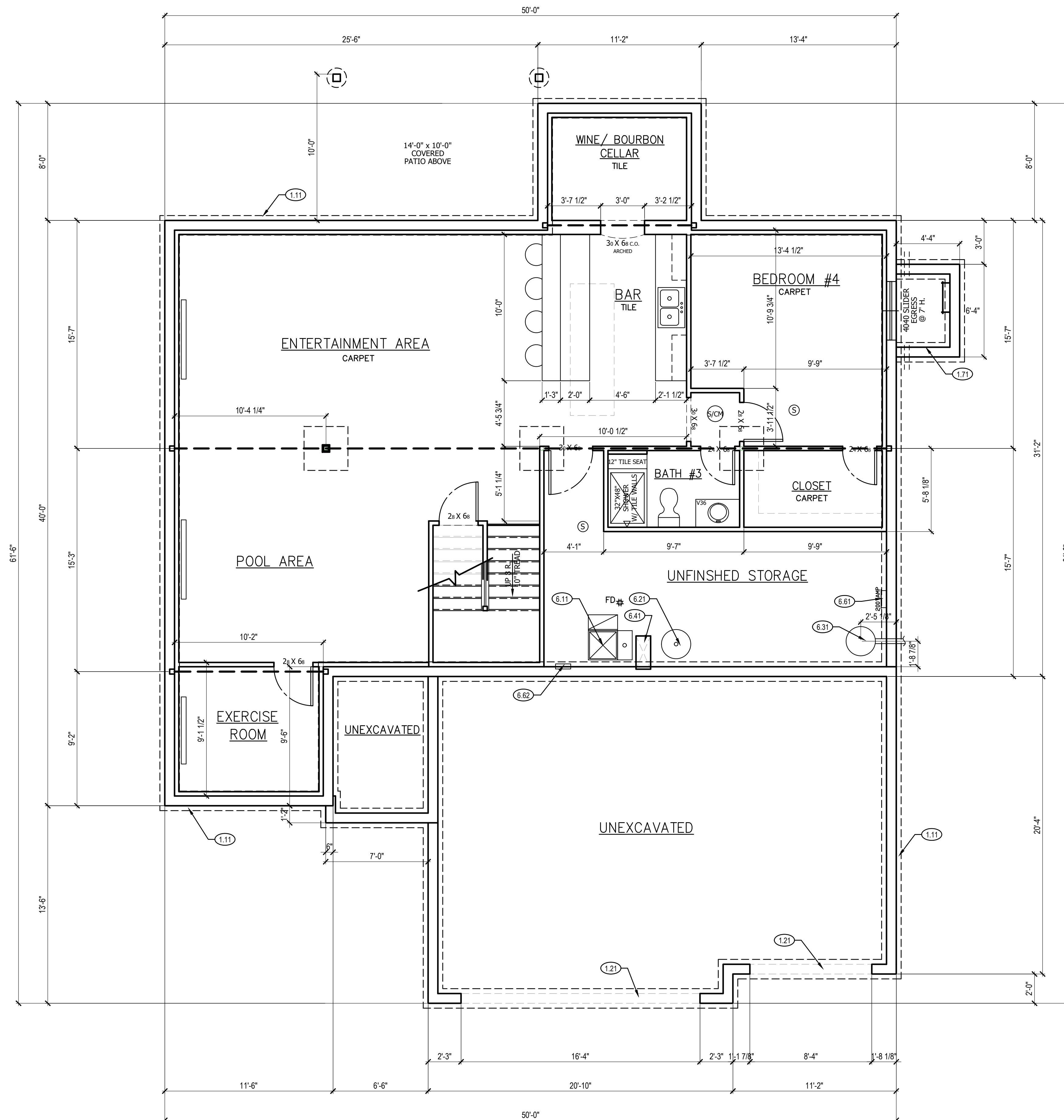


RELEASE FOR CONSTRUCTION
 AS NOTED FOR PLAN REVIEW
 DEVELOPMENT SERVICES
 LEE'S SUMMIT, MISSOURI
05/19/2023

1303 FINISHED SQFT.

1303 FINISHED SQ FT

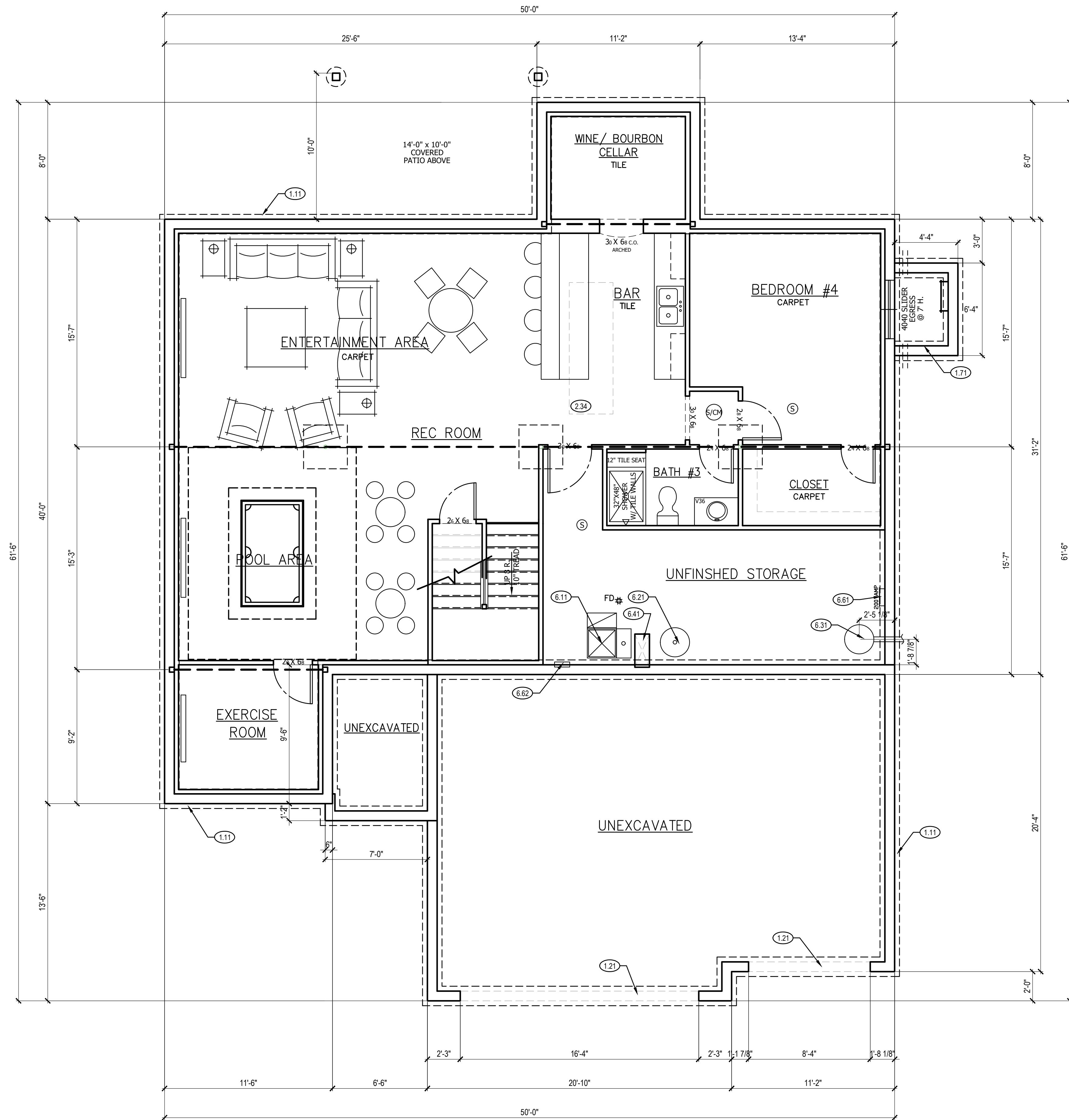


FOUNDATION FRAMING PLAN ①
 SCALE: 1/4" = 1'-0"

- FOUNDATION PLAN NOTES**
- 1.00 HOLD SILL PLATE BACK 2"
 - 1.01 HOLD SILL PLATE BACK 4"
 - 1.11 CONTINUOUS CONCRETE FOOTING
 - 1.31 2X4 STUD WALL WITH TREATED SILL PLATE
 - 1.71 CONCRETE WINDOW WELL FOR EGRESS WITH LADDER. PROVIDE SLEEVE THROUGH WALL FOR FOUNDATION DRAIN. TOP OF WINDOW WELL TO BE 3" BELOW TOP OF FOUNDATION.
 - 2.32 INSULATE CANTILEVER AS REQUIRED PRIOR TO BLOCKING
 - 2.34 PROVIDE ADDITIONAL BRACING FOR ISLAND ABOVE.
 - 6.11 DIRECT FURNACE. FUEL BURNING APPLIANCES SHALL BE DIRECT VENTED TO EXTERIOR FOR COMBUSTION AIR.
 - 6.21 HOT WATER HEATER WITH THERMAL EXPANSION CONTROL DEVICE
 - 6.31 SUMP PIT AND PUMP. PROVIDE ELECTRICAL GFCI PROTECTION. PROVIDE SLEEVE THROUGH FOOTING.
 - 6.41 HVAC CHASE ABOVE
 - 6.61 200 AMP ELECTRICAL PANEL. LOCATION TO BE DETERMINED ON SITE.
 - 6.62 UFER GROUND- VERIFY LOCATION WITH PROJECT MANAGER.
 - 7.65 LINE OF FLOOR ABOVE

- GENERAL NOTES**
- BACK WATER VALVES REQUIRED ON ALL BASEMENT PLUMBING FIXTURES. PROVIDE MEANS OF CONTROLLING PRESSURE CAUSED BY THERMAL EXPANSION.
 - ALL SILLS & SLEEPERS SUPPORTED ON CONCRETE OR MASONRY SHALL BE OF DECAY-RESISTANT MATERIALS.
 - DIMENSIONAL LUMBER IS LABELED PER INDUSTRY STANDARD TERMINOLOGY. ACTUAL LUMBER SIZING IS EXPECTED TO VARY PER VENDOR.
 - ALL INTERIOR NON-LOAD BEARING, NON-BRACED, NON-CABINET WALLS ARE ALLOWED AT 24" O.C.
 - SMOKE AND CARBON MONOXIDE DETECTORS SHOW ON PLANS ARE TO BE CONSIDERED RECOMMENDATIONS ONLY. FINAL PLACEMENT IS TO BE DETERMINED BY MUNICIPAL REQUIREMENTS.
 - WINDOW SIZES ARE WRITTEN IN FEET AND INCHES PER INDUSTRY STANDARDS. EX: 3050 SH = 3'-0" X 5'-0" SINGLE HUNG, 3066 FIX = 3'-0" X 6'-6" FIXED.

A3.0

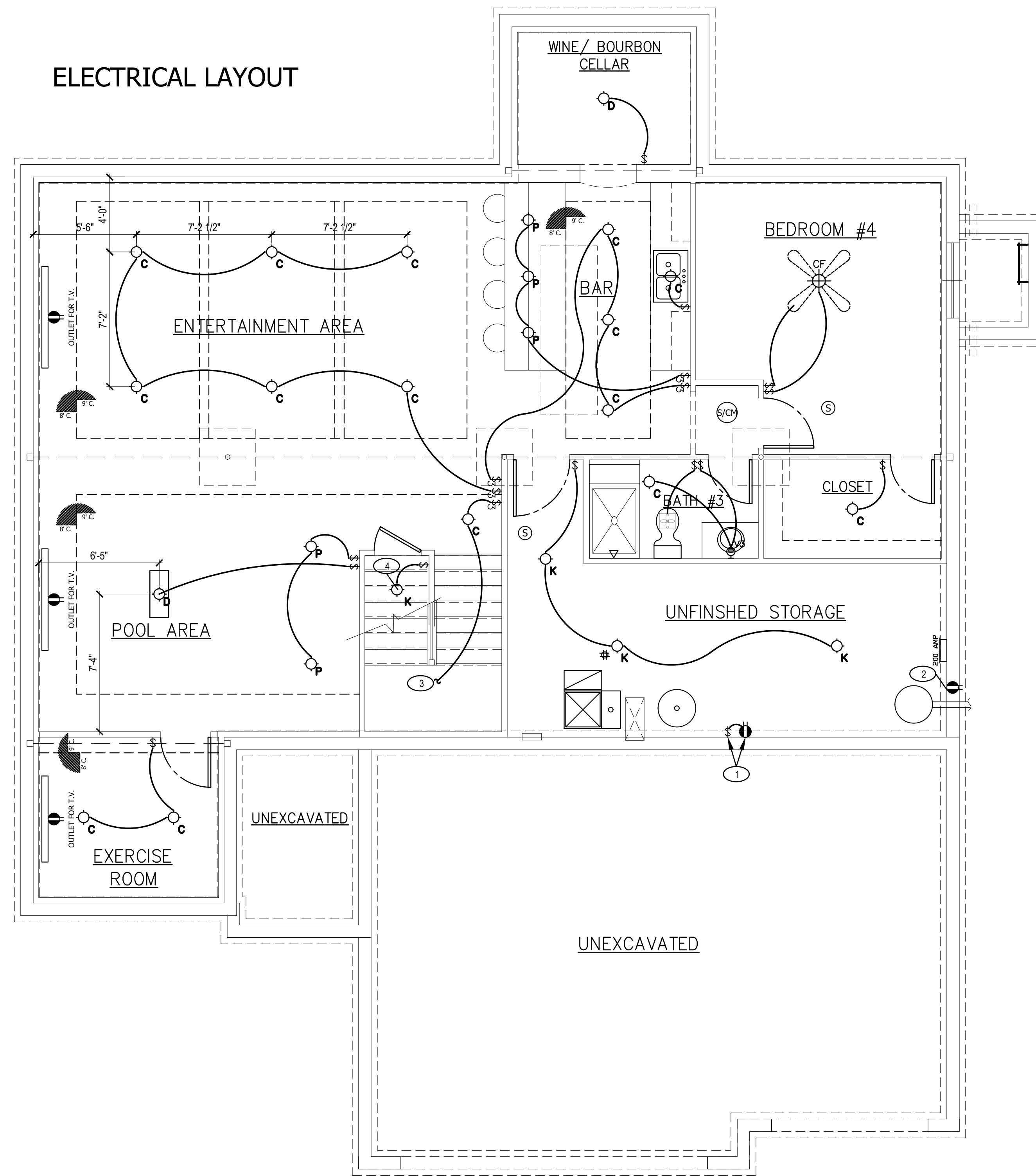


FURNITURE PLAN ①
SCALE: 1/4" = 1'-0"

- FOUNDATION PLAN NOTES**
- 1.00 HOLD SILL PLATE BACK 2"
 - 1.01 HOLD SILL PLATE BACK 4"
 - 1.11 CONTINUOUS CONCRETE FOOTING
 - 1.31 2X4 STUD WALL WITH TREATED SILL PLATE
 - 1.71 CONCRETE WINDOW WELL FOR EGRESS WITH LADDER. PROVED SLEEVE THROUGH WALL FOR FOUNDATION DRAIN. TOP OF WINDOW WELL TO BE 3" BELOW TOP OF FOUNDATION.
 - 2.32 INSULATE CANTILEVER AS REQUIRED PRIOR TO BLOCKING
 - 2.34 PROVIDE ADDITIONAL BRACING FOR ISLAND ABOVE.
 - 6.11 DIRECT FURNACE. FUEL BURNING APPLIANCES SHALL BE DIRECT VENTED TO EXTERIOR FOR COMBUSTION AIR.
 - 6.21 HOT WATER HEATER WITH THERMAL EXPANSION CONTROL DEVICE
 - 6.31 SUMP PIT AND PUMP. PROVIDE ELECTRICAL GFCI PROTECTION. PROVIDE SLEEVE THROUGH FOOTING.
 - 6.41 HVAC CHASE ABOVE
 - 6.61 200 AMP ELECTRICAL PANEL. LOCATION TO BE DETERMINED ON SITE.
 - 6.62 UFER GROUND - VERIFY LOCATION WITH PROJECT MANAGER.
 - 7.65 LINE OF FLOOR ABOVE

- GENERAL NOTES**
- BACK WATER VALVES REQUIRED ON ALL BASEMENT PLUMBING FIXTURES. PROVIDE MEANS OF CONTROLLING PRESSURE CAUSED BY THERMAL EXPANSION.
 - ALL SILLS & SLEEPERS SUPPORTED ON CONCRETE OR MASONRY SHALL BE OF DECAY-RESISTANT MATERIALS.
 - DIMENSIONAL LUMBER IS LABELED PER INDUSTRY STANDARD TERMINOLOGY. ACTUAL LUMBER SIZING IS EXPECTED TO VARY PER VENDOR.
 - ALL INTERIOR NON-LOAD BEARING, NON-BRACED, NON-CABINET WALLS ARE ALLOWED AT 24" O.C.
 - SMOKE AND CARBON MONOXIDE DETECTORS SHOW ON PLANS ARE TO BE CONSIDERED RECOMMENDATIONS ONLY. FINAL PLACEMENT IS TO BE DETERMINED BY MUNICIPAL REQUIREMENTS.
 - WINDOW SIZES ARE WRITTEN IN FEET AND INCHES PER INDUSTRY STANDARDS. EX: 3050 SH = 3'-0" X 5'-0" SINGLE HUNG, 3066 FIX = 3'-0" X 6'-6" FIXED.

ELECTRICAL LAYOUT



ELECTRICAL NOTES

1. PROVIDE GFCI RECEPTACLE AND SWITCH FOR HUMIDIFIER.
2. PROVIDE GFCI RECEPTACLE FOR SUMP PUMP.
3. CONTINUE 3-WAY SWITCH CIRCUIT UP TO SWITCH AT TOP OF STAIRS.
3. KEYLESS LIGHT AND SWITCH LOCATED UNDER STAIRS.

ELECTRICAL FIXTURE SCHEDULE

SYMBOL	FIXTURE DESCRIPTION	LL
⊙	LED TRAVERSE CAN	20
⊙	FLUSH MOUNT LIGHT	0
⊙	FLOURESCENT LIGHT	0
⊙	FLUSH FIXTURE LIGHT	0
⊙	DECORATIVE LIGHT	1
⊙	PENDANT LIGHT	3
⊙	CEILING FAN/LIGHT COMBO	0
⊙	KEYLESS LIGHT	4
⊙	RECESSED SHOWER LIGHT	0
V3	VANITY LIGHTS - 3 LIGHTS	1
V4	VANITY LIGHTS - 4 LIGHTS	0
E	OUTDOOR COACH LIGHT	0
⊙	WALL SCONCE	0
⊙	JUNCTION BOX	0
⊙	DRYER OUTLET	0
\$	SWITCH	12
\$3	3-WAY SWITCH	5
\$4	4-WAY SWITCH	0
\$5	5-WAY SWITCH	0
+	EXHAUST FAN	1
⊙	SMOKE DETECTOR	2
⊙	SMOKE/CARBON MONOXIDE DETECTOR COMBO	1

FOUNDATION ELECTRICAL PLAN 1
SCALE: 1/4" = 1'-0"

E3.0