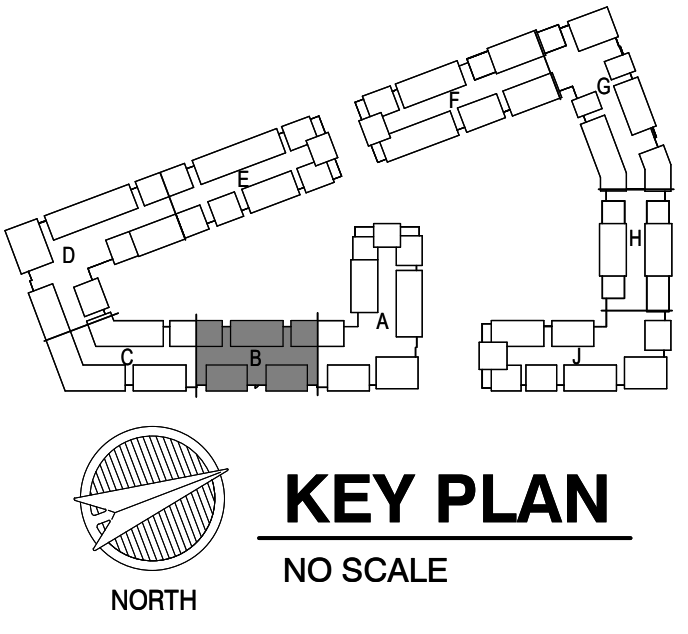


- NOTES:**
- COORDINATE WITH OTHER SUB-CONTRACTORS FOR PLACEMENT OF WORK PRIOR TO INSTALLATION BEGINNING.
 - SEE FIRE SUPPRESSION SUBMITTALS AND INCORPORATE ALL DEVICES INTO FIRE ALARM.
 - EXIT LIGHTS SHALL BE VISIBLE TO OCCUPANTS.
 - PROVIDE NEC CLEARANCES FOR ALL PANELS AND ELECTRICAL EQUIPMENT.
 - FOLLOW THE DRAWINGS FOR HOME RUNS AND CIRCUIT NUMBERS. DO NOT COMBINE CIRCUITS IN LARGER CONDUITS UNLESS PRE-APPROVED BY THE ENGINEER.
 - LABEL ALL JUNCTION BOXES AS TO THE PANEL AND CIRCUIT NUMBER SERVED.
 - PANEL DIRECTORIES SHALL BE SPECIFIC TO THE ROOMS/EQUIPMENT SERVED.
 - SEE ARCHITECTURAL DRAWINGS FOR MOUNTING HEIGHTS AND DETAILS.
 - SEE TELECOM DETAILS FOR MISCELLANEOUS POWER NEEDS.
 - ALL DISC FIXTURES ARE TYPE A UNLESS NOTED OTHERWISE
ALL CLOSET FIXTURES ARE TYPE N UNLESS NOTED OTHERWISE
ALL FIXTURES ARE TYPE X1 UNLESS NOTED OTHERWISE
ALL FIXTURES ARE TYPE X2 UNLESS NOTED OTHERWISE
ALL FIXTURES ARE TYPE X3 UNLESS NOTED OTHERWISE
ALL FIXTURES ARE TYPE X4 UNLESS NOTED OTHERWISE
 - LIGHTING AND RECEPTACLES IN STAIR TOWER TO BE ON SINGLE CIRCUIT.
 - VERTICALLY ALIGNED FLOOR TO FLOOR RECEPTACLES TO BE ON SINGLE CIRCUIT
 - REVIEW HVAC PLANS FOR FIRE/SMOKE DAMPERS AND CONNECT TO 120V AND FIRE ALARM.



2 1ST FLOOR - SEGMENT B
ELECTRICAL
1/4" = 1'-0"

ARCHITECTURE
LANDSCAPE
ARCHITECTURE
ENERGY SERVICES

NSPJ

ARCHITECTSSM
3515 W. 75TH ST., SUITE 201
PRAIRIE VILLAGE, KS 66208

05/17/2023

A NEW RESIDENTIAL COMMUNITY AT:

TRIOLOGY

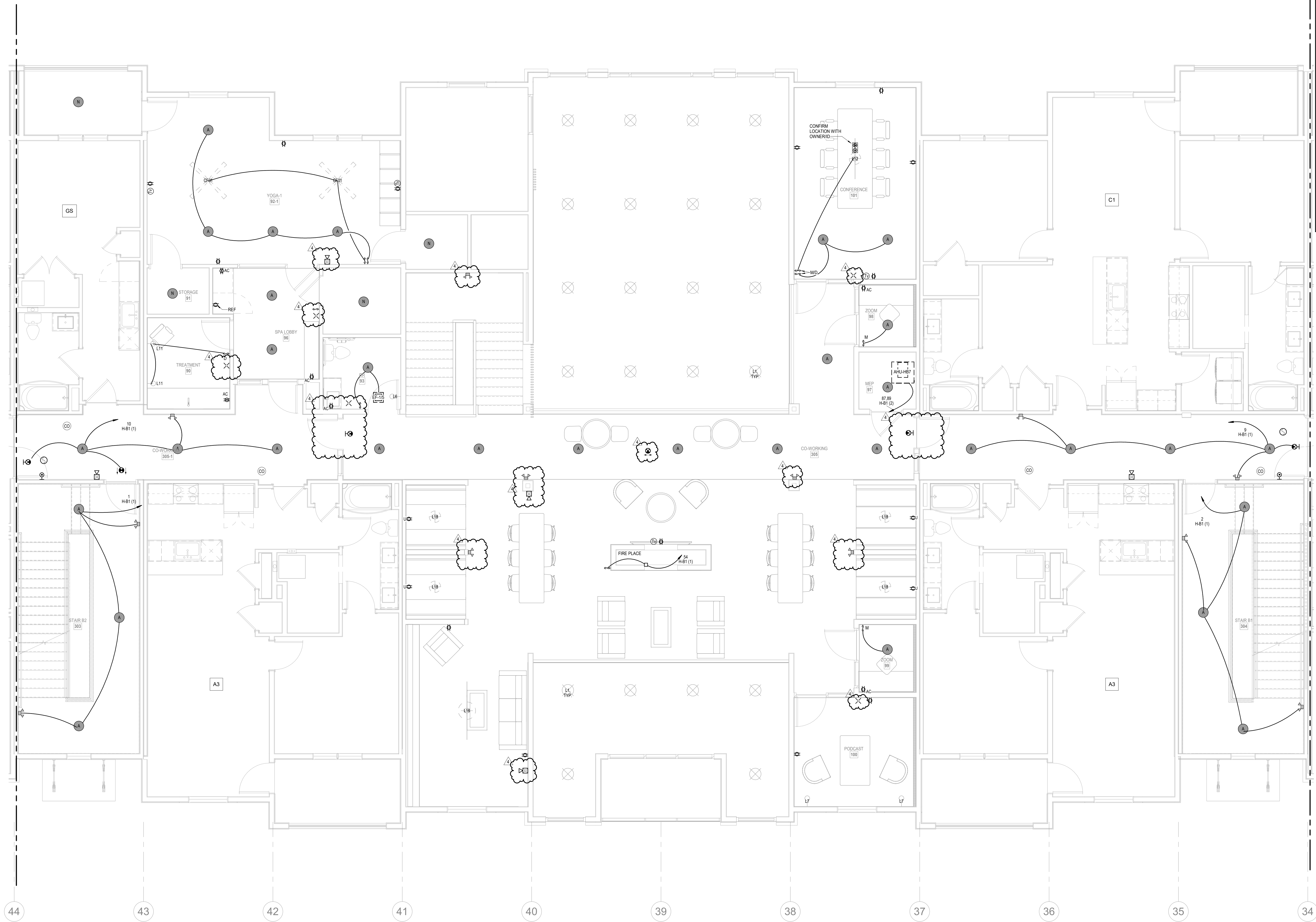
DRAWING RELEASE LOG
03-15-2023 - PERMIT SUBMITTAL

REVISIONS
3 23-0511 AGENDUM 2
4 23-05-17 C23

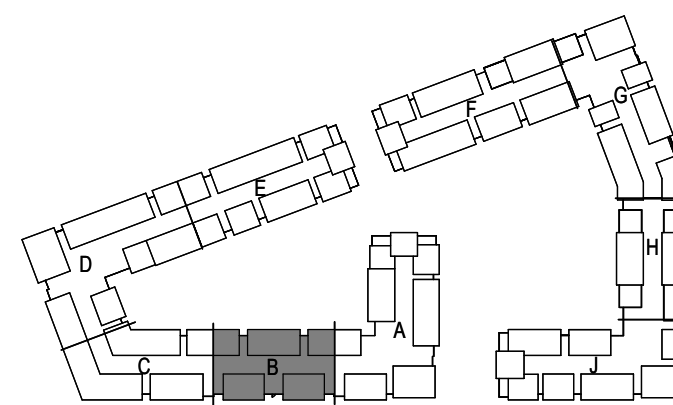
KEY PLAN
NO SCALE

JOB NO. 705921 DATE 03.15.2023
DRAWN BY LSA CAD
5/17/2023
CITY COMMENTS #3
SHEET NAME SEGMENT B - 1ST FLOOR - ELECTRICAL
SHEET NO. E1.06.1

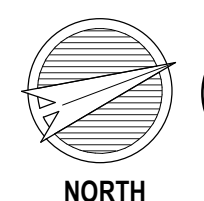
LS&A
Consulting Engineers & Associates P.A.
3039 SW Summerfield Drive, Suite A
Topeka, Kansas 66619-3974
8625 College Boulevard, Suite 102
Overland Park, Kansas 66210
Telephone: (785) 233-3332
Email: lsand@topeka.com
LSA PROJECT NO. 2204061



- NOTES:**
- COORDINATE WITH OTHER SUB-CONTRACTORS FOR PLACEMENT OF WORK PRIOR TO INSTALLATION BEGINNING.
 - SEE FIRE SUPPRESSION SUBMITTALS AND INCORPORATE ALL DEVICES INTO FIRE ALARM.
 - EXIT LIGHTS SHALL BE VISIBLE TO OCCUPANTS.
 - PROVIDE NEC CLEARANCES FOR ALL PANELS AND ELECTRICAL EQUIPMENT.
 - FOLLOW THE DRAWINGS FOR HOME RUNS AND CIRCUIT NUMBERS. DO NOT COMBINE CIRCUITS IN LARGER CONDUITS UNLESS PRE-APPROVED BY THE ENGINEER.
 - LABEL ALL JUNCTION BOXES AS TO THE PANEL AND CIRCUIT NUMBER SERVED.
 - PANEL DIRECTORIES SHALL BE SPECIFIC TO THE ROOMS/EQUIPMENT SERVED.
 - SEE ARCHITECTURAL DRAWINGS FOR MOUNTING HEIGHTS AND DETAILS.
 - SEE TELECOM DETAILS FOR MISCELLANEOUS POWER NEEDS.
 - ALL DISC FIXTURES ARE TYPE A UNLESS NOTED OTHERWISE
ALL CLOSET FIXTURES ARE TYPE N UNLESS NOTED OTHERWISE
ALL FIXTURES ARE TYPE X1 UNLESS NOTED OTHERWISE
ALL FIXTURES ARE TYPE X2 UNLESS NOTED OTHERWISE
ALL FIXTURES ARE TYPE X3 UNLESS NOTED OTHERWISE
ALL FIXTURES ARE TYPE X4 UNLESS NOTED OTHERWISE
 - LIGHTING AND RECEPTACLES IN STAIR TOWER TO BE ON SINGLE CIRCUIT.
 - VERTICALLY ALIGNED FLOOR TO FLOOR RECEPTACLES TO BE ON SINGLE CIRCUIT
 - REVIEW HVAC PLANS FOR FIRE/SMOKE DAMPERS AND CONNECT TO 120V AND FIRE ALARM.



KEY PLAN
NO SCALE



1 2ND FLOOR - SEGMENT B
ELECTRICAL
1/4" = 1'-0"

A NEW RESIDENTIAL COMMUNITY AT:

TRIOLOGY

800 & 810 NW WARD RD. | LEE'S SUMMIT, MO

DRAWING RELEASE LOG
03-15-2023 - PERMIT SUBMITTAL

REVISIONS		
3	23-05-11	ADDENDUM 2
4	23-05-17	CC3

LS&A
Consulting Engineers & Associates P.A.
CONSULTING ENGINEERS
3039 SW Summerfield Drive, Suite A
Topeka, Kansas 66614-3974
6625 College Boulevard, Suite 102
Overland Park, Kansas 66210
Telephone: (785) 233-3332
Email: lsapa@lsapa.com
LSA PROJECT NO. 2204061

JOB NO. 705921
DRAWN BY LSA CAD
5/17/2023
CITY COMMENTS #3
SHEET NAME
SEGMENT B - 2ND FLOOR - ELECTRICAL
SHEET NO.

DATE 03.15.2023

E1.06.2

ARCHITECTURE
LANDSCAPE
ARCHITECTURE
ENERGY SERVICES
P. 913.831.1415
F. 913.831.1563
NSPIARCH.COM
© COPYRIGHT 2023
NSPJ
ARCHITECTS
3515 W. 75TH ST., SUITE 201
PRAIRIE VILLAGE, KS 66208
05/17/2023