

LINETYPES LEGEND:

- NEW — ABOVE SLAB
- - - NEW — BELOW SLAB
- EXISTING — ABOVE SLAB
- - - EXISTING — BELOW SLAB
- - - - - DEMOLITION

PIPING LEGEND:

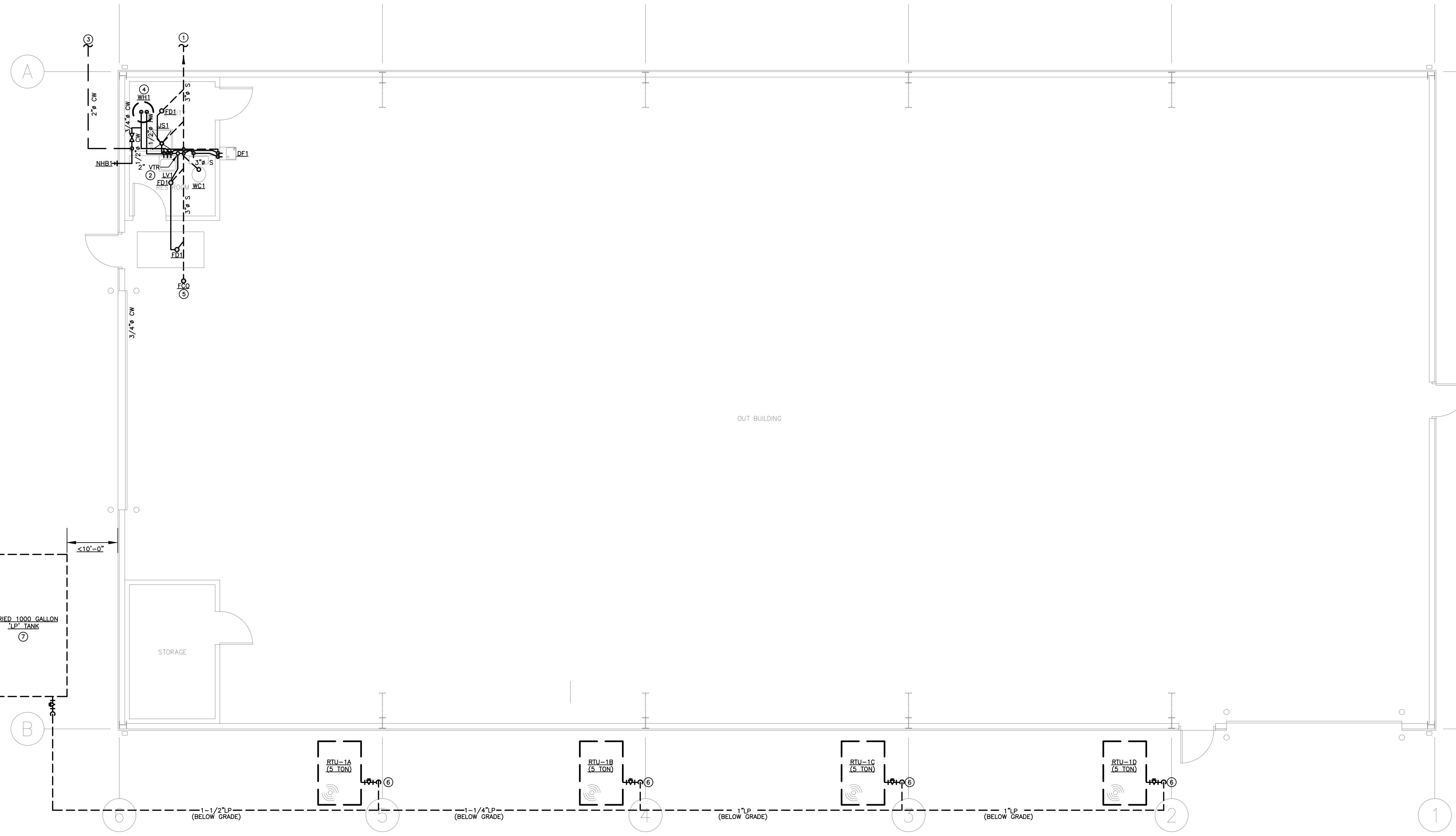
- ⊘ ELBOW DOWN
- ⊙ ELBOW UP
- ⊕ P-TRAP
- ⊕ TEE DOWN
- ⊙ ELBOW UP
- ⊕ SHUT-OFF VALVE (GENERIC)
- ⊕ BALL VALVE
- ⊕ GLOBE VALVE
- ⊕ BUTTERFLY VALVE
- ⊕ GATE VALVE
- ⊕ CHECK VALVE
- ⊕ BALANCING VALVE
- ⊕ PRESSURE REDUCING VALVE
- ⊕ GAS COCK
- ⊕ WYE-STRAINER
- ⊕ UNION
- ⊕ FLANGE
- ⊕ RELIEF VALVE
- ⊕ AIR VENT (MANUAL / AUTOMATIC)
- ⊕ FLOW DIRECTION
- ⊕ PIPE BREAK / CONTINUATION
- ⊕ FLOOR DRAIN
- ⊕ FLOOR SINK
- ⊕ FLOOR CLEANOUT
- ⊕ HOSE BIBB

ANNOTATION LEGEND:

- ABC-1 EQUIPMENT / FIXTURE TAG
- ⊕ PLAN NOTE
- ⊕ CONNECT TO EXISTING

ABBREVIATIONS LEGEND:

- AFF ABOVE FINISHED FLOOR
- AFG ABOVE FINISHED GRADE
- BOP BOTTOM OF PIPE
- BT BATHTUB
- CFH CUBIC FEET PER HOUR
- CO CLEANOUT
- CW DOMESTIC COLD WATER
- DF DRINKING FOUNTAIN
- DN DOWN
- DSN DOWNSPOUT NOZZLE
- (E) EXISTING
- ET EXPANSION TANK
- EWK ELECTRIC WATER COOLER
- EWS EYE WASH STATION
- FCO FLOOR CLEANOUT
- FD FLOOR DRAIN
- FF FINISHED FLOOR
- FFA FROM FLOOR ABOVE
- FFB FROM FLOOR BELOW
- FS FLOOR SINK
- GI GREASE INTERCEPTOR
- GPM GALLONS PER MINUTE
- HB HOSE BIBB
- HP HORSEPOWER
- HWR HOT WATER RECIRCULATION
- E INVERT ELEVATION
- IN.WG INCHES WATER GAUGE
- JS JANITOR SINK
- LI LINT INTERCEPTOR
- LP LIQUID PROPANE
- LS LAUNDRY SINK
- LV LAVATORY
- MAX MAXIMUM
- MB MOP BASIN
- MBH 1,000 BTUH
- MIN MINIMUM
- NG NATURAL GAS
- NHB NON-FREEZE HOSE BIBB
- NRH NON-FREEZE ROOF HYDRANT
- OD OVERFLOW ROOF DRAIN
- PR PROPANE
- QTY QUANTITY
- RD ROOF DRAIN
- RP RECIRCULATION PUMP
- RPZ REDUCED PRESSURE ZONE BACKFLOW PREVENTER
- S SANITARY WASTE
- SH SHOWER
- SK SINK
- SS SERVICE SINK
- SWP SEWAGE PUMP
- TD TRENCH DRAIN
- TFA TO FLOOR ABOVE
- TFB TO FLOOR BELOW
- TMV THERMOSTATIC MIXING VALVE
- TRA TO ROOF ABOVE
- TSP TOTAL STATIC PRESSURE
- UR URINAL
- V VENT
- WC WATER CLOSET
- WH WATER HEATER
- WCO WALL CLEANOUT
- WPD WATER PRESSURE DROP



1 PLUMBING PLAN
SCALE: 3/16" = 1'-0"

PLUMBING FIXTURE SCHEDULE:

INFORMATION BELOW IS FOR GENERAL FIXTURE REQUIREMENTS ONLY. PLUMBING CONTRACTOR SHALL COORDINATE WITH OWNER AND ARCHITECT FOR EXACT FIXTURE REQUIRED FOR THE PROJECT. COORDINATE WITH OWNER FOR INFORMATION ON PROCURING FIXTURES AND ASSOCIATED COSTS. CONTRACTOR SHALL BE CLEAR AS TO WHAT FIXTURES ARE INCLUDED IN THEIR PROPOSED COSTS.

FIXTURES IN THIS SCHEDULE, OR THE APPROVED EQUIVALENT, SHALL BE PROVIDED BY THE PLUMBING CONTRACTOR UNLESS NOTED OTHERWISE. REFER TO SPECIFICATIONS AND MANUFACTURER'S INSTALLATION INSTRUCTIONS FOR FURTHER REQUIREMENTS.

- DE1**
 - ELECTRIC WATER COOLER WITH BOTTLE FILLER (ADA ACCESSIBLE); WALL-MOUNTED, BARRIER-FREE, DUAL-LEVEL, FRONT AND SIDE PUSH ACTUATOR BARS, STAINLESS STEEL BOWL, FLEXIBLE POLYESTER ELASTOMER SAFETY BUBBLER AND GALVANIZED STEEL FRONT AND SIDES, BOTTLE FILLING STATION, CHILLER WITH 8.0 GALLONS PER HOUR CAPACITY AT 50°F DRINKING WATER, 80°F INLET WATER, AND 90°F ROOM TEMPERATURE. UNIT SHALL BE LEAD FREE DESIGN AND MEET FEDERAL AND STATE LOW-LEAD REQUIREMENTS.
 - TRIM: QUARTER-TURN BALL TYPE ANGLE STOP VALVE WITH RISER AND ESCUTCHEON, 1-1/4" 17-GAUGE TUBULAR CHROME PLATED BRASS ADJUSTABLE P-TRAP AND WASTE ARM WITH CLEANOUT PLUG AND ESCUTCHEON.
 - ELECTRICAL REQUIREMENTS: 120V/1Ø, 6.0 FLA.
- FCO**
 - FLOOR CLEANOUT: CAST IRON BODY, FLASHING FLANGE WITH CLAMPING COLLAR, ABS PLUG, AND ADJUSTABLE, ROUND, SECURED, HEAVY DUTY SCORiated NICKEL BRONZE TOP. INSTALL PER MANUFACTURER'S REQUIREMENTS BASED ON FLOORING TYPE USED. PROVIDE ACCESSORIES AS REQUIRED FOR PROPER INSTALLATION. COORDINATE FINISH TYPE WITH ARCHITECTURAL PLANS.
- FD1**
 - FLOOR DRAIN: BODY MATERIAL TO MATCH CONNECTED PIPING, WITH FLANGE, INTEGRAL REVERSIBLE CLAMPING COLLAR, SEEPAGE OPENINGS, AND 6" NICKEL BRONZE STRAINER WITH VANDAL-PROOF SCREWS. PROVIDE P-TRAP AND WASTE ARM SIZED AS INDICATED ON PLAN.
 - ACCESSORIES: PROVIDE TRAP GUARD.

- JS1**
 - JANITOR'S SINK: 24"W x 24"L x 10"H MOLDED FIBER BASIN WITH INTEGRAL STAINLESS STEEL DRAIN BODY.
 - FAUCET: FAUCET WITH WALL BRACE, INTEGRAL VACUUM BREAKER, PAIL HOOK, AND 3/4" MALE HOSE THREADED OUTLET. SECURE FAUCET IN WALL WITH BACKBOARD.
 - TRIM: TYPE 304 20-GAUGE STAINLESS STEEL WALL SURROUNDS, 3"-0" LONG REINFORCED HOSE WITH 3/4" CHROME COUPLING AND WALL HOOK, EXTRUDED VINYL BUMPER GUARD, AND 2'-0" STAINLESS STEEL MOP HANGER.
- LV1**
 - WALL-MOUNTED LAVATORY: RECTANGULAR WALL MOUNTED WHITE VITREOUS CHINA FIXTURE WITH FAUCET LEDGE AND FRONT OVERFLOW.
 - FAUCET: FAUCET WITH 4" CENTRESET, VANDAL-RESISTANT, WITH LEVER HANDLES AND 0.5 GPM AERATOR.
 - TRIM: GRID DRAIN WITH TAILPIECE, QUARTER-TURN BALL TYPE STOP VALVES WITH RISERS AND ESCUTCHEONS, 1-1/4" 17-GAUGE TUBULAR CHROME PLATED BRASS ADJUSTABLE P-TRAP AND WASTE ARM WITH CLEANOUT PLUG AND ESCUTCHEON, CONCEALED ARM CARRIER WITH STANCHIONS TO FLOOR, AND INSULATION KIT FOR WATER AND WASTE PIPES.
 - BASIS OF DESIGN (LAV): AMERICAN STANDARD "LUCERNE" SERIES
 - BASIS OF DESIGN (FAUCET): CHICAGO FAUCET 802 SERIES
- NHR1**
 - NON-FREEZE HOSE BIBB: BRONZE NICKEL PLATED HYDRANT, INTEGRAL VACUUM BREAKER, QUARTER TURN HANDLE, 3/4" THREADED HOSE CONNECTION, ADJUSTABLE WALL CLAMP AND STAINLESS STEEL BOX. COORDINATE EXTENSION OF VALVE SHUTOFF WITH THE WIDTH OF THE WALL USED. ALL WATER SHALL BE LOCATED ON INTERIOR SIDE OF WALL INSULATION.
- WC1**
 - FLOOR-MOUNTED WATER CLOSET (NON-ADA): TANK TYPE WHITE VITREOUS CHINA FIXTURE WITH ELONGATED BOWL, 1.6 GALLON PER FLUSH, SHIPON FLUSH ACTION, AND CLOSE-COUPLED TANK WITH TRIP LEVER ON THE WIDE SIDE OF THE STALL.
 - TRIM: WHITE OPEN-FRONT CONTOURED, SOLID PLASTIC, HEAVY-DUTY, SEAT-LESS-COVER WITH SELF-SUSTAINING HINGES AND STAINLESS STEEL BOLTS; QUARTER-TURN BALL TYPE ANGLE STOP VALVE WITH RISER AND CHROME PLATED ESCUTCHEON.

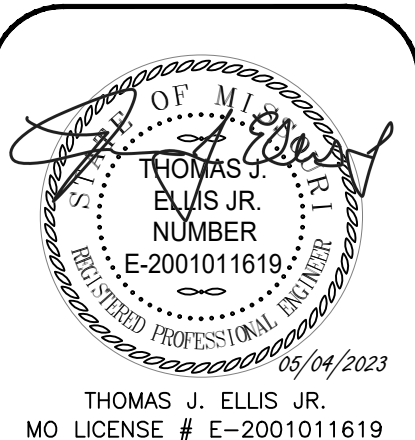
- WCO1**
 - WALL CLEANOUT: CAST IRON CLEANOUT TEE, COUNTER-SUNK CAST IRON PLUG WITH GASKET SEAL, AND STAINLESS STEEL ROUND COVER WITH SCREW.
- WH1**
 - WATER HEATER: ELECTRIC, 10 GALLON, 1.5 kW INPUT, 8 GALLON PER HOUR RECOVERY AT 80°F TEMPERATURE RISE AND 120°F OPERATING TEMPERATURE. PROVIDE ALL WATER CONNECTIONS, VALVES, AND SPECIALS PER MANUFACTURER'S INSTALLATION REQUIREMENTS.
 - ELECTRICAL REQUIREMENTS: 120-VOLT, SINGLE PHASE, 13 FULL LOAD AMPS.
 - BASIS OF DESIGN: A.O. SMITH MODEL # DEL-10S.

PLUMBING PLAN NOTES:

1. 3" SANITARY SEWER TO NEW SEPTIC SYSTEM INSTALLED BY OTHERS.
2. EXTEND 4" VTR UP THROUGH ROOF ABOVE.
3. NEW 2" WATER LINE TO NEW WATER SERVICE. COORDINATE WITH UTILITY ON CONNECTION LOCATION AND REQUIREMENTS.
4. NEW WATER HEATER LOCATED ON MEZZANINE ABOUT STORAGE ROOM.
5. PROVIDE FLOOR DRAIN AS SHOWN. COORDINATE EXACT LOCATION WITH OWNER.
6. NEW 'LP' GAS CONNECTION TO NEW GROUND MOUNT ROOFTOP UNIT AS SHOWN. PROVIDE NEW DIRT LEG AND GAS COCK AT NEW ROOFTOP UNIT CONNECTION. REFER TO ROOFTOP UNIT INSTALLATION INSTRUCTIONS FOR ADDITIONAL REQUIREMENTS. COORDINATE WITH HVAC CONTRACTOR.
7. EXTEND GAS LINE TO NEW BURIED 'LP' TANK ADJACENT TO BUILDING. COORDINATE EXACT LOCATION WITH OWNER. TANK TO BE INSTALLED PER MANUFACTURERS RECOMMENDATIONS AND LOCAL CODES.
8. SNOW MAT SLAB RECESS (RE: ARCH). SLOPE FLOOR TO DRAIN.

PLUMBING GENERAL NOTES:

- DRAWINGS ARE SCHEMATIC IN NATURE AND BASED ON PRELIMINARY SITE OBSERVATION AND ORIGINAL DESIGN DRAWINGS (WHEN AVAILABLE). CONTRACTOR SHALL INVESTIGATE THE PROJECT SITE AND BECOME FULLY AWARE OF ALL FIELD CONDITIONS, CURRENT SYSTEM OPERATION, AS WELL AS COORDINATION REQUIREMENTS. COORDINATE ALL PLUMBING WORK WITH ARCHITECTURAL DRAWINGS, EXISTING CONDITIONS, AND OTHER TRADES PRIOR TO BID OR START OF WORK.
- PLUMBING WORK SHALL CONFORM TO APPLICABLE CODES AS ADOPTED BY THE LOCAL AUTHORITY HAVING JURISDICTION.
- EXACT LOCATION AND ELEVATIONS OF ALL EXISTING UTILITIES SHALL BE VERIFIED PRIOR TO ANY INSTALLATION OF CONNECTIONS THEREOF. ALL CONNECTIONS TO EXISTING UTILITIES (E.G. DOMESTIC WATER, SEWER, VENT, AND NATURAL GAS) SHALL BE MADE WITH APPROVAL OF THE ADMINISTRATIVE AUTHORITY AND THE RESPECTIVE UTILITY COMPANIES.
- SANITARY WASTE, VENT, AND STORM PIPING BELOW GRADE SHALL BE SCHEDULE 40 PVC WITH SOLVENT-WELDED JOINTS.
- SANITARY WASTE, VENT, AND STORM PIPING ABOVE GRADE SHALL BE NO-HUB CAST IRON IN RETURN AIR PLENUM APPLICATIONS. PVC OR ABS PIPING CAN BE USED IN AREAS OTHER THAN RETURN AIR PLENUMS AS ALLOWED BY CODE.
- SLOPE SANITARY PIPING AS FOLLOWS: 1/4" PER FOOT FOR PIPE SIZES 2-1/2" AND SMALLER, AND 1/8" PER FOOT FOR PIPE SIZES 3" AND LARGER.
- PROVIDE WATER SUPPLY SHUT-OFF VALVES ON EACH TOILET ROOM GROUP AND TO MISCELLANEOUS EQUIPMENT.
- PROVIDE SIZE "A" WATER HAMMER ARRESTORS ON SUPPLY TO ALL PLUMBING FIXTURES.
- PROVIDE STOP VALVES ON ALL INDIVIDUAL PLUMBING FIXTURE SUPPLIES.
- COORDINATE SELECTION OF ALL PLUMBING FIXTURES WITH OWNER.
- DOMESTIC WATER PIPING BELOW GRADE SHALL BE TYPE K SOFT COPPER WITH FLARED FITTINGS OR TYPE K HARD COPPER WITH WROUGHT FITTINGS AND SOLDERED JOINTS.
- DOMESTIC WATER PIPING ABOVE GRADE SHALL BE TYPE L COPPER WITH WROUGHT FITTINGS AND SOLDERED JOINTS.
- INSULATE NEW DOMESTIC COLD WATER, HOT WATER, HOT WATER RECIRCULATION, INTERIOR CONDENSATE DRAIN, AND STORM PIPING WITH MINIMUM 1" FIBERGLASS INSULATION (MINIMUM R-4.0) WITH PAPER COVERING.
- ALL NATURAL GAS PIPING SHALL BE SCHEDULE 40 BLACK STEEL WITH MALLEABLE FITTINGS. SUPPORT PIPING AT INTERVALS NOT TO EXCEED THOSE LISTED IN TABLE 415.1 OF THE INTERNATIONAL FUEL GAS CODE.
- PROVIDE RUST-INHIBITOR PAINT ON ALL NATURAL GAS PIPING LOCATED EXTERIOR TO THE BUILDING.
- PROVIDE A.G.A. APPROVED GAS COCKS AND DIRT LEGS AT CONNECTIONS TO ALL GAS-FIRED EQUIPMENT.
- INSTALL ALL PLUMBING EQUIPMENT, FIXTURES, VALVES, ETC. PER MANUFACTURER'S INSTALLATION REQUIREMENTS. PROVIDE ADDITIONAL APPURTENANCES PER MANUFACTURER'S INSTALLATION REQUIREMENTS.
- INSTALL CLEANOUTS AT EVERY END OF SANITARY PIPING RUNS, AT MINIMUM OF EVERY 100'-0" OF SANITARY PIPING, AND AT EVERY CHANGE IN DIRECTION GREATER THAN 45°. REFER TO SECTION 708 OF THE INTERNATIONAL PLUMBING CODE FOR ADDITIONAL REQUIREMENTS.
- ALL FLOOR DRAINS SHALL HAVE A 2" THROAT AND P-TRAP UNLESS NOTED OTHERWISE.



New Recreation Bldg. for:
Monheiser Residence
2620 SOUTHEAST RANSOM ROAD
LEE'S SUMMIT, MO

PERMIT & CDNST.	05/04/2023
ISSUE	DATE

SHEET TITLE	
PLUMBING PLAN	
DRAWN BY	TJE
CHECKED BY	TJE
DATE	05/04/2023
PROJ. NO.	2023054
SHEET NO.	
P100	