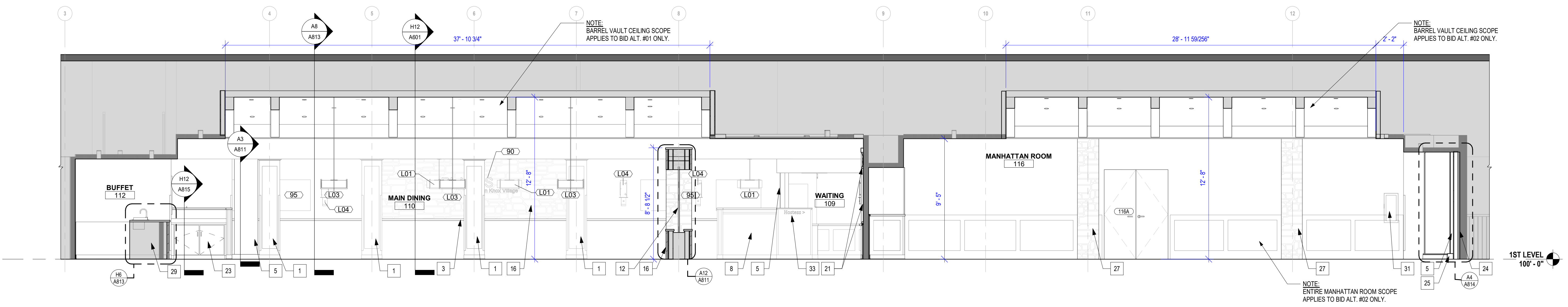


H12 BUILDING SECTION
1/4" = 1'-0"



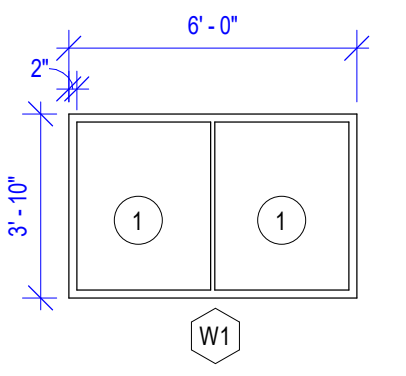
E12 BUILDING SECTION
1/4" = 1'-0"

DOOR SCHEDULE										
DOOR NO.	ROOM NAME	WIDTH	HEIGHT	DOOR		FRAME		RTG	POWER	REMARKS
				TYPE	MATERIAL	FINISH	MATERIAL			
105	WOMEN'S RESTROOM	3'-0"	6'-8"	D1	HM	PT-3	HM	PT-3		YES 7
106	MEN'S RESTROOM	3'-0"	6'-8"	D1	HM	PT-3	HM	PT-3		YES 7
107	WAITING	4'-0"	7'-0"	D5	ST	-	-	-		8
110A	KITCHEN	3'-0"	7'-0"	D4	HPL	LAM-3	HM	PT-3		9
110B	KITCHEN	3'-0"	7'-0"	D4	HPL	LAM-3	HM	PT-3		9
110C	MAIN DINING	3'-0"	7'-0"	D4	HPL	LAM-3	HM	PT-3		9
112	BUFFET	3'-0"	7'-0"	D1	HM	PT-3	HM	PT-3		4, 5, 6
113A	CORRIDOR	3'-6"	6'-8"	D1	HM	PT-3	HM	PT-3	RE: REMARKS	YES 4, 5, 6
113B	KITCHEN	3'-0"	7'-0"	D4	HPL	LAM-3	HM	PT-3		9
113C	KITCHEN	3'-0"	7'-0"	D4	HPL	LAM-3	HM	PT-3		9
116A	MANHATTAN ROOM	5'-0"	7'-0"	D2	HM	PT-3	HM	PT-3		3
116B	MANHATTAN ROOM	6'-0"	7'-0"	D2	HM	PT-3	HM	PT-3		3
116C	MANHATTAN ROOM	6'-0"	7'-0"	D2	HM	PT-3	HM	PT-3		3
116D	MANHATTAN ROOM	5'-0"	7'-0"	D2	HM	PT-3	HM	PT-3		3
118A	PLAZA ROOM	5'-0"	6'-8"	D2	HM	PT-3	HM	PT-3		3
119A	GALLERY ROOM	5'-0"	7'-0"	D2	HM	PT-3	HM	PT-3		3
X103A	CORRIDOR	3'-0"	6'-8"	D3	HM	PT-3	HM	PT-3		3
X103B	CORRIDOR	3'-0"	6'-8"	D3	HM	PT-3	HM	PT-3		3
X104	CORRIDOR	3'-0"	6'-8"	D1	HM	PT-3	HM	PT-3		3
X108A	CORRIDOR	6'-0"	7'-0"	D2	HM	PT-3	HM	PT-3		3
X108B	CORRIDOR	3'-0"	7'-0"	D3	HM	PT-3	HM	PT-3		3
X114B	CORRIDOR	3'-0"	6'-8"	D1	HM	PT-3	HM	PT-3		3
X114C	CORRIDOR	3'-0"	6'-8"	D1	HM	PT-3	HM	PT-3		3
X114D	CORRIDOR	3'-8"	6'-8"	D1	HM	PT-3	HM	PT-3		3
X115	STAIR A	3'-0"	6'-8"	D1	WD	PT-3	HM	PT-3		3
X117A	CORRIDOR	3'-0"	7'-0"	D3	HM	PT-3	HM	PT-3		3
X118B	PLAZA ROOM	3'-0"	6'-8"	D1	HM	PT-3	HM	PT-3		3
X119B	GALLERY ROOM	2'-6"	6'-8"	D1	HM	PT-3	HM	PT-3		3
X119C	GALLERY ROOM	3'-0"	6'-8"	D1	HM	PT-3	HM	PT-3		3
X121A	CORRIDOR	6'-0"	6'-8"	D2	HM	PT-3	HM	PT-3		3
X121B	CORRIDOR	3'-8"	6'-8"	D1	HM	PT-3	HM	PT-3		3
X121C	CORRIDOR	6'-0"	6'-8"	D2	HM	PT-3	HM	PT-3		3
X121D	CORRIDOR	3'-0"	6'-8"	D1	HM	PT-3	HM	PT-3		3
X121E	CORRIDOR	6'-0"	6'-8"	D2	HM	PT-3	HM	PT-3		3
X121F	CORRIDOR	3'-0"	6'-8"	D1	HM	PT-3	HM	PT-3		3

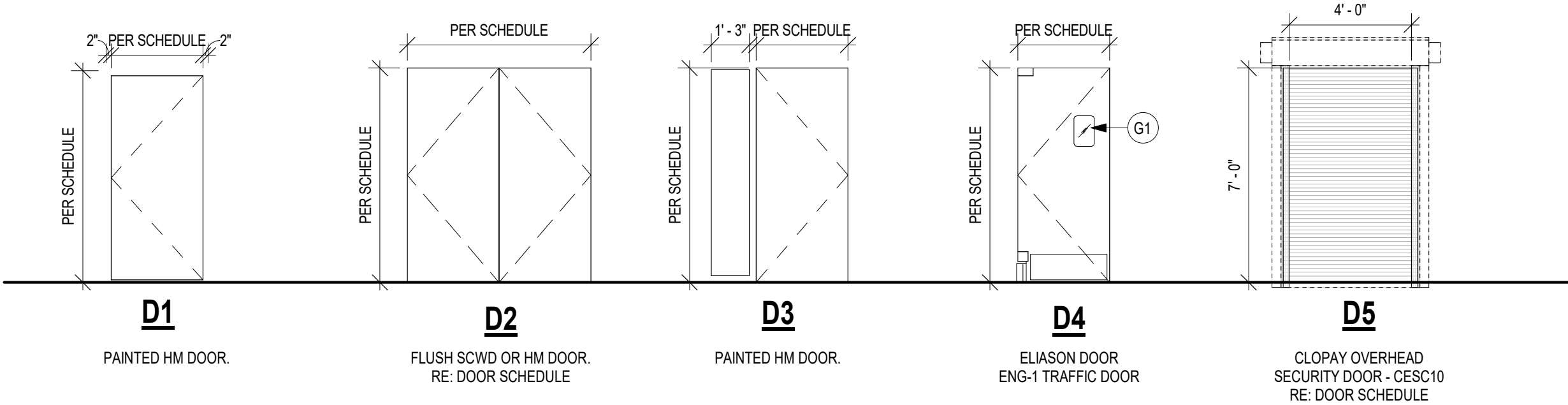
DOOR SCHEDULE REMARKS:

- DEMO.
- EXISTING DOOR TO REMAIN; PROTECT DOOR AND FRAME FROM DAMAGE THROUGHOUT CONSTRUCTION. ANY DAMAGE TO BE REPAIRED/REPLACED PER OWNER DISCRETION.
- EXISTING DOOR TO REMAIN; REFINISH ONLY. PROTECT DOOR AND FRAME FROM DAMAGE THROUGHOUT CONSTRUCTION. ANY DAMAGE TO BE REPAIRED/REPLACED PER OWNER DISCRETION.
- CONTRACTOR TO VERIFY EXISTING DOOR RATINGS PRIOR TO DEMOLITION. NEW DOOR RATINGS TO MATCH EXISTING.
- PROVIDE ALARM.
- PROVIDE PANIC HARDWARE.
- AUTOMATIC DOOR ADA DOOR OPEN/CLOSE.
- OVERHEAD SECURITY GRILLE DOOR: CLOPAY CESC10, LOCKING, STRAIGHT PATTERN GRILLE (2"x3"), FACE-OF-WALL-MOUNT, STANDARD PUSH-UP OPERATION.
- SINGLE LEAF, LEFT HINGE.

WINDOWS



DOORS



FRAMES



NOTE:

- SOME DOOR TYPES MAY NOT BE USED ON THIS PARTICULAR PROJECT.
- DOORS TO BE 1 3/4" THK, UNLESS OTHERWISE NOTED ON DOOR SCHEDULE.
- REFER TO DOOR SCHEDULE FOR GLASS TYPE AND THICKNESS.

KEYED NOTES:

- 4-SIDED COLUMN WRAP. RE: DETAIL SHEETS.
- 3-SIDED COLUMN WRAP. RE: DETAIL SHEETS.
- PREP AND REFINISH EXISTING RADIATOR ENCLOSURES. REPLACE FRONT PANELS WITH NEW TO MATCH NEW WAINSCOTING. RE: DETAIL SHEETS.
- BUILT-IN RECEPTION DESK WITH LOCKABLE DRAWERS.
- TRANSLUCENT 3FORM PANELS; RE: DETAIL SHEETS.
- BUILT-IN BENCH SEATING WITH PLANTERS.
- TRAY STATION WITH WHEELCHAIR STORAGE UNDERNEATH.
- TRAY STATION; OPEN BELOW FOR TRAY STANDS.
- BUILT-IN HOSTESS STAND AND POS STATION.
- GRAB & GO MARKET WITH ROLLING OVERHEAD LOCKABLE DOOR.
- WHEELCHAIR STORAGE AREA.
- STONE VENEER WALL WITH WATER FEATURE.
- TO-GO SHELVES.
- ELECTRICAL PANEL LOCATION. RE: ELECTRICAL DRAWINGS.
- INSTALL NEW THERMAL VIEWING WINDOW.
- STONE VENEER WALL.
- FRP WALLS AT TRAY STATION ENCLOSURES AND ADJACENT WALL.
- BEVERAGE STATION.
- CEILING MOUNTED "PLACES" SIGNAGE AND LOGO; BY OWNER.
- NEW CASEWORK; RE: DETAILS.
- EXISTING JOHN KNOX VILLAGE WALL OF HONOR. PROTECT DURING CONSTRUCTION.
- RECESSED TRAY STATION.
- TRAY STATION.
- INFILL NEW WALL PANEL IN FRONT OF EXISTING GLASS BLOCK WALL. PAINT INTERIOR FACE OF GLASS BLOCK WITH SOLID PRIMER. AND ALKOY URETHANE PRIOR TO CONSTRUCTION OF NEW STUD WALL AND INSTALLATION OF 3FORM PANELS. RE: FINISH SCHEDULE.
- 4" CURB FOR TRANSLUCENT PANEL SYSTEM.
- NEW FRAMED OPENINGS WITH TRANSLUCENT 3FORM PANELS; RE: DETAIL SHEETS.
- STONE VENEER WRAPPED COLUMNS, 3-SIDED.
- EXISTING STAIRS TO REMAIN. APPLY NEW TREAD, RISER AND NOSING FINISHES. ALL SECOND FLOOR FINISHES TO REMAIN.
- INSTALL NEW SOLID SURFACE QUARTZ COUNTERTOP. FRONT FACE OF CASEWORK TO BE REFINISHED WITH NEW STONE VENEER. REINSTALL EXISTING SINK AND EQUIPMENT. RE: FINISH SCHEDULE AND LEGEND.
- EXISTING PORTABLE BUFFET TO BE REFURBISHED. FINISHES TO COORDINATE WITH NEW MATERIALS AND FINISHES. COORDINATE WITH OWNER.
- EXISTING FIRE EXTINGUISHER. REINSTALL AS SHOWN. RE: DEMO PLAN FOR ORIGINAL LOCATION.
- FLUSH, PIN-MOUNTED, "CARRY OUT" SIGNAGE. BY OWNER.
- FLUSH, PIN-MOUNTED, "HOSTESS" DIRECTIONAL SIGNAGE. BY OWNER.

GENERAL NOTES: DOOR SCHEDULE

- ALUM REFERS TO ALUMINUM
- WD REFERS TO WOOD
- HM REFERS TO HOLLOW METAL
- GL REFERS TO GLAZING
- ST REFERS TO STAINLESS STEEL
- HPL REFERS TO HIGH PRESSURE LAMINATE
- FOR FINISH COLOR DESIGNATION FOR INTERIOR DOOR AND FRAMES. RE: FINISH SCHEDULE AND DOOR SCHEDULE.
- PROTECT ALL DOORS & FRAMES FROM DAMAGE THROUGHOUT CONSTRUCTION PHASES.
- ALL EGRESS DOORS TO BE PROVIDED WITH PANIC HARDWARE.

GLASS TYPE LEGEND

DESIGNATION NUMBER	DESCRIPTION
1	TEMPERED GLASS COLOR: CLEAR
DOOR LEGEND IN NEW FLOOR PLAN	
	EXISTING DOOR TO BE REUSED RE: DOOR SCHEDULE
	NEW DOOR RE: DOOR SCHEDULE

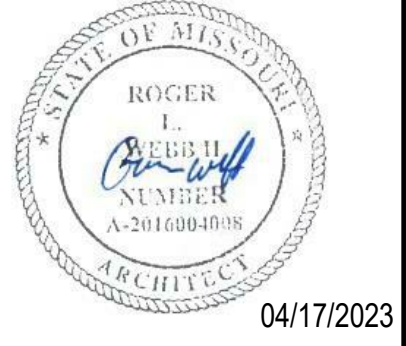
BUILDING SECTIONS, DOOR & WINDOW SCHEDULES



JOHN KNOX VILLAGE - RESTAURANT
1001 NW CHIPMAN RD
LEE'S SUMMIT, MO 64081

COPYRIGHT © BY COLLINS WEBB ARCHITECTURE, LLC
REVISION DATES:

1 City Comments 04/17/2023



PROFESSIONAL SEAL

A601
ISSUE DATE: 14 MARCH 2023
COLLINS WEBB #: 22010