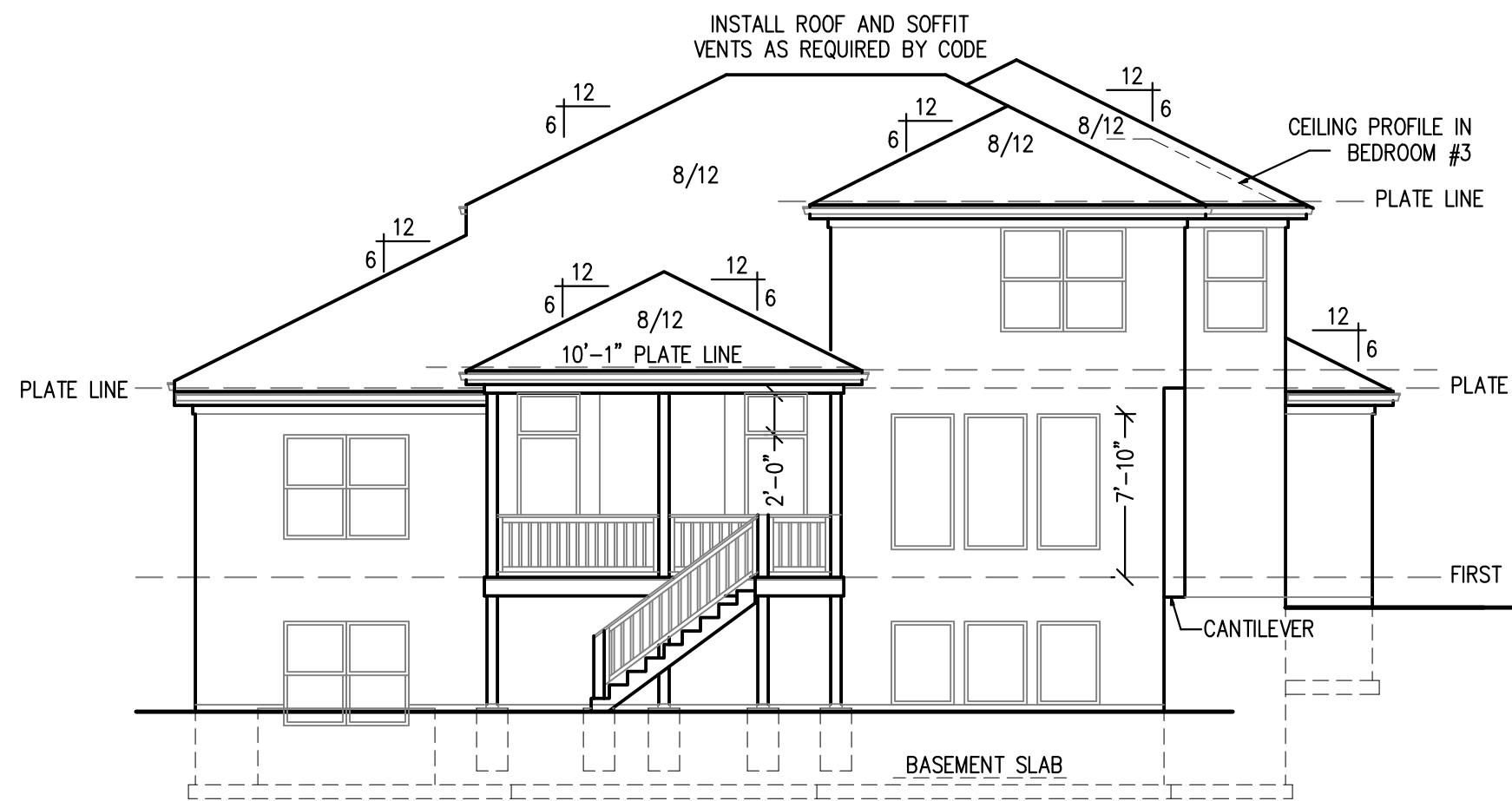


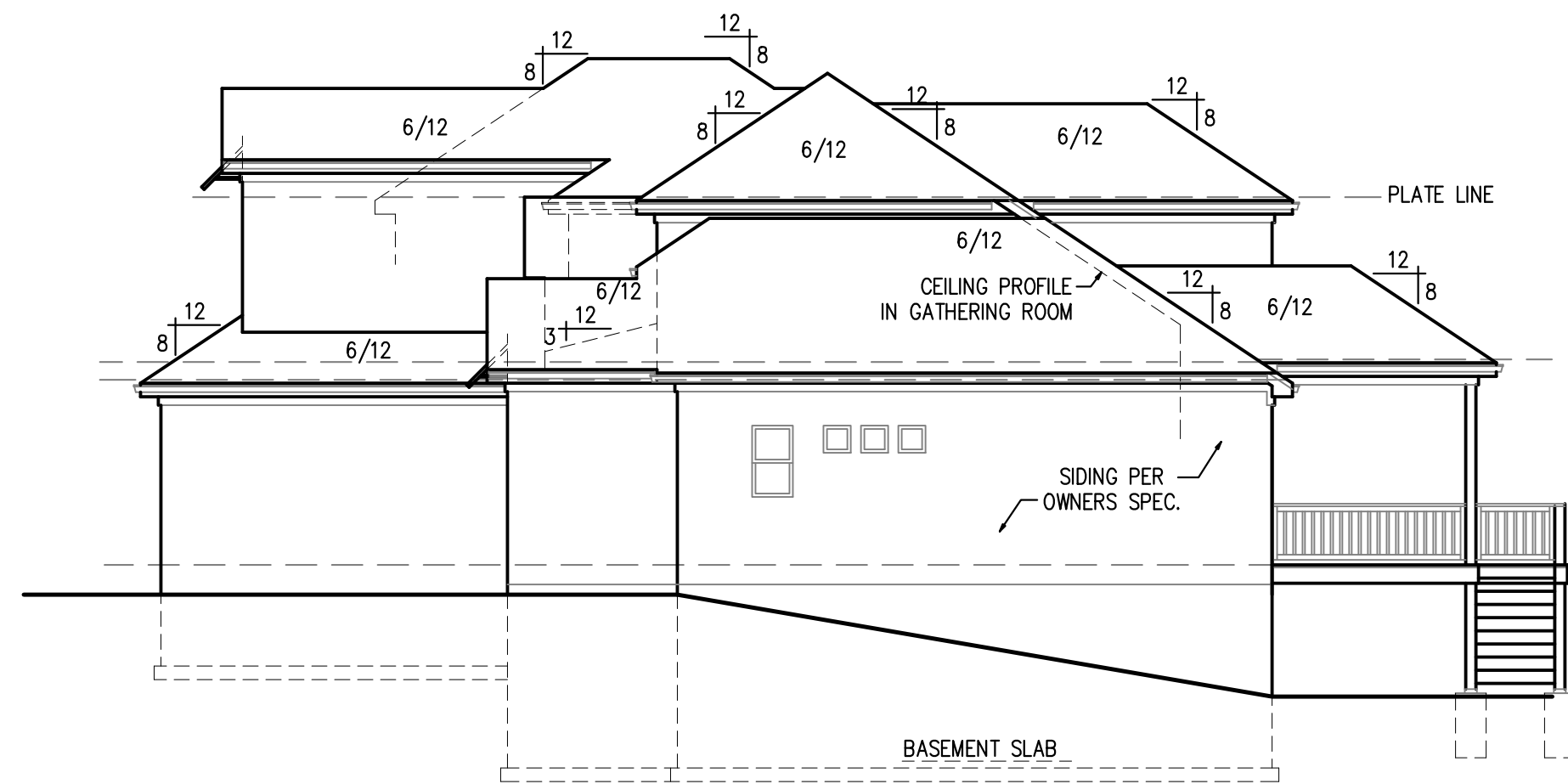
LEFT ELEVATION

SCALE: 1/8" = 1'-0"



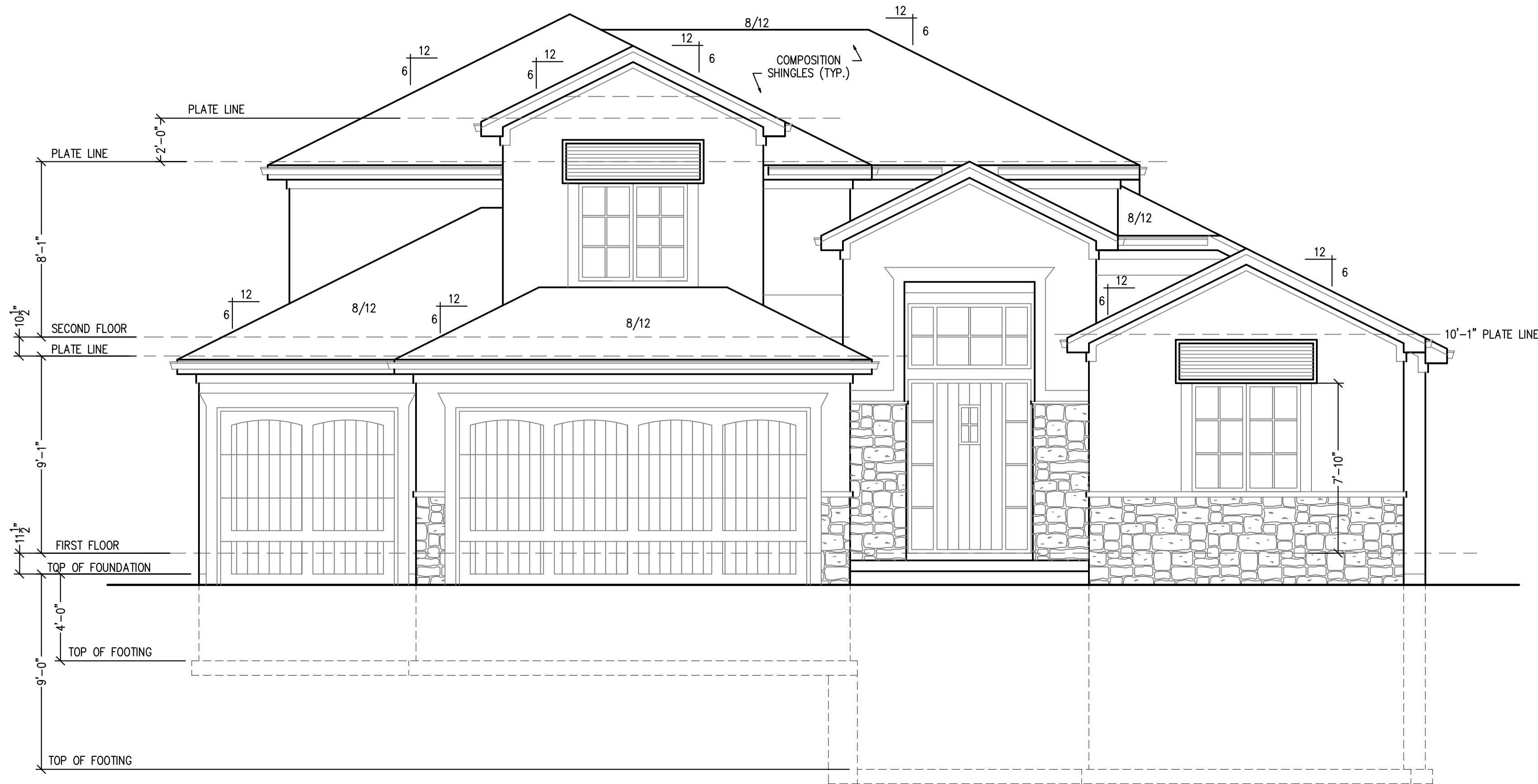
REAR ELEVATION

SCALE: 1/8" = 1'-0"



RIGHT ELEVATION

SCALE: 1/8" = 1'-0"



FRONT ELEVATION

SCALE: 1/4" = 1'-0"

BASEMENT	24 SQ. FT.
FIRST FLOOR	1,604 SQ. FT.
SECOND FLOOR	984 SQ. FT.
TOTAL	2,602 SQ. FT.

UNFINISHED	1,395 SQ. FT.
GARAGE	614 SQ. FT.
DECK	239 SQ. FT.

DISCLAIMER
ACTUAL PLANS AND ELEVATIONS MAY VARY
FROM ARCHITECTURAL DRAWINGS.
DUE TO TERRAIN/BACKFILL PROCESS.
FRONT ELEVATIONS ARE ARCHITECTURAL
DRAWINGS AND MAY VARY DUE TO
MATERIAL AVAILABILITY.

NOTE:
PLANS DESIGNED PER IRC AS
ADOPTED BY GOVERNING JURISDICTION



APEX ENGINEERS, INC.
1602 LOCUST ST
KANSAS CITY, MO 64108
816.421.3222

STRUCTURAL DESIGN REVIEW

KANSAS ENGINEERING LICENSE: 090
MISSOURI ENGINEERING LICENSE: 200004673

Timberland Spec
2763 S. W. 12th Terr. - Highland Meadows - Lot 136
Lees Summit, Missouri

© Copyright 2023

DRAWN BY: CJD

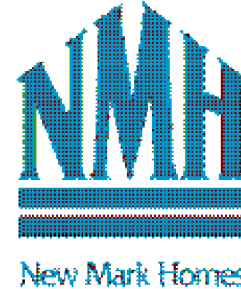
CHECKED BY: CA

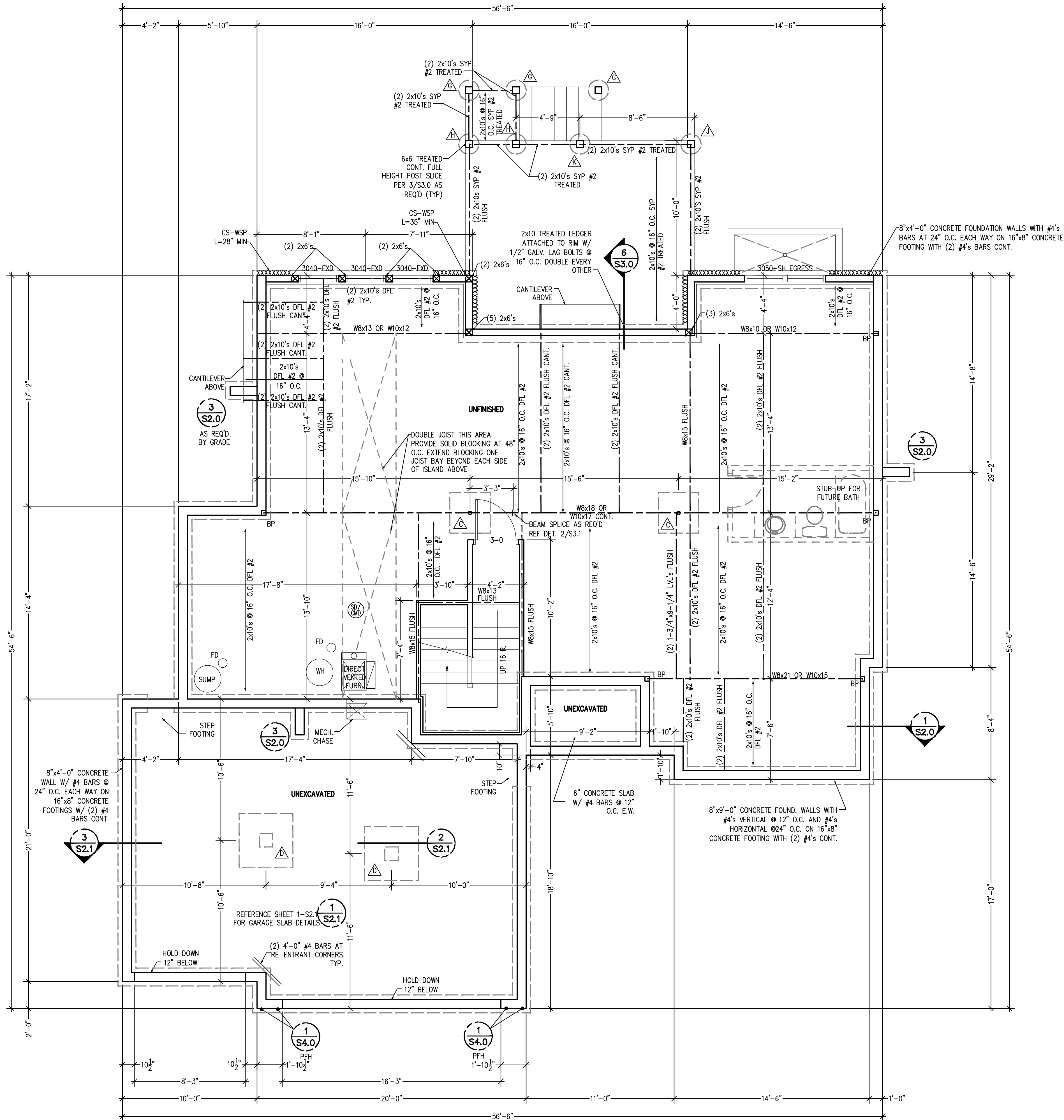
DATE: 4/12/2023

A1

PROJ. 23-314

New Mark Homes
P.O. Box 12025
Parkville, Missouri 64152
Ph. (816) 969-9010





FOUNDATION PLAN
SCALE: 1/4" = 1'-0"

STRUCTURAL NOTES:
- ALL UNMARKED HEADERS MIN (2)#2-2x10
- ALL HEADERS AND BEAMS MIN #2 GRADE DFL (OR EQ.)
- BEARING WALL
- STRUCTURE NOTED AS FLUSH TO BE FLUSH WITH SUB-FLOOR ABOVE.

BRACED WALL METHODOLOGY
CONTINUOUS EXTERIOR SHEATHING PER WSP METHOD (BELOW) UNLESS OTHERWISE NOTED ON THE PLAN

XXXX EXTERIOR BRACED WALLS:
WSP METHOD: WOOD STRUCTURAL PANEL SHEATHING WITH A THICKNESS NOT LESS THAN 3/4" WITH MINIMUM SPAN RATING OF 24/0 FOR 16" OC STUD SPACING WITH 6d COMMON NAILS AT 6" OC EDGES AND 12" OC FIELD OR SHEATHING THICKNESS NOT LESS THAN 7/8" WITH MINIMUM SPAN RATING OF 24/0 FOR 24" OC SPACING WITH 8d COMMON NAILS AT 6" OC EDGES AND 12" OC IN FIELD.
(NOTE: FRAMING MEMBERS 16" OC MAX UNBLOCKED, AND WITH SHEATHING APPLIED DIRECTLY TO FRAMING MEMBERS)

//// INTERIOR BRACED WALLS (REF 2-S4.0):
GB METHOD: 1/2" MIN. GYPSUM BOARD OVER STUDS SPACED 24" MAX. FASTENED WITH No 6 - 1 1/4" TYPE 'W' OR 'S' DRYWALL SCREWS AT 7" OC EDGES AND FIELD (MIN. 4'-0" SECTION FOR BOTH SIDES.)
OR
LIB METHOD: 1x4 WOOD FASTENED WITH (3) 8d COMMON NAILS OR SIMPSON / USP 16 GA. TYPE WB (OR EQUAL) STL. X-BRACE(S) AT 45° TO 60° ANGLES, MAXIMUM 16" O.C. STUD FASTENED PER MANUFACTURER'S SPECIFICATIONS.

COLUMN & PIER PAD SCHEDULE (REF. 5/S2.0)			
COLUMN MARK	PAD SIZE	REINFORCEMENT	COLUMN SIZE
△	30" x 30" x 12"	(4) #4 BAR E.W.	3" SCH 40 (3.5" OD)
△	36" x 36" x 12"	(4) #4 BAR E.W.	3" SCH 40 (3.5" OD)
△	42" x 42" x 12"	(5) #4 BAR E.W.	3" SCH 40 (3.5" OD)
△	48" x 48" x 12"	(6) #4 BAR E.W.	3 1/2" SCH 40 (4" OD)
△	54" x 54" x 16"	(8) #4 BAR E.W.	REF PLAN
△	60" x 60" x 16"	(10) #4 BAR E.W.	REF PLAN

- COLUMN & PAD SIZES SHOWN ARE FOR MAXIMUM ADJUSTABLE COLUMN HEIGHT OF 9'-1". REQUIRES SEPARATE ENGR'D DESIGN IF GREATER THAN 9'-1" TALL. COLUMNS SIZED AS QWIK-ADJUST COLUMN, BY QUALITY-WAY PRODUCTS, LLC. REFER TO SAFE LOADING CAPACITIES PER MANUF. SPECS, OR SUBSTITUTION TO ANOTHER PRODUCT ONLY WITH PRIOR APPROVAL BY APEX ENGINEERS.
- COLUMN & PIER PAD SIZES SHOWN ARE BASED ON AN ASSUMED MINIMUM ALLOWABLE SOIL BEARING CAPACITY OF 1,500PSF.

COLUMN & PIER SCHEDULE		
MARK	COLUMN SIZE	PIER DIA.
△	6x6	12"
△	6x6	16"
△	6x6	18"
△	6x6	24"
△	6x6	28"

- ALL PIERS TO BEAR ON ORIGINAL UNDISTURBED SOIL OF 1,500 PSF BEARING CAPACITY OR FILL COMPACTED AND TESTED TO CONFORM TO THE RECOMMENDATIONS OF A GEOTECHNICAL ENGINEER.
- PIERS SHALL EXTEND BELOW THE FROST LINE, MIN. DEPTH OF 36" BELOW GRADE.
- POST SHALL BE TREATED OR CEDAR WITH SIMPSON ABU66 POST BASE

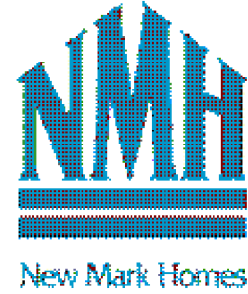
DETAIL REFERENCES

- | | | | |
|-----------|--|-----------|--|
| 1
S2.0 | TYPICAL FOUNDATION WALL DETAIL | 2
S2.1 | STRUCTURAL GARAGE SLAB
PIER PAD DETAIL |
| 2
S2.0 | TYPICAL "UNRESTRAINED"
FOUNDATION WALL DETAIL | 3
S2.1 | STRUCTURAL GARAGE SLAB /
WALL SECTION |
| 3
S2.0 | TYPICAL DEAD MAN DETAIL | 6
S2.1 | TYPICAL OVERDIG DETAIL AT
BASEMENT SLAB |
| 4
S2.0 | FOUNDATION WALL JUMP DETAIL | 1
S4.0 | ALTERNATE BRACED WALL PANEL
DETAIL |
| 5
S2.0 | COLUMN PAD DETAIL | 1
S4.0 | APA NARROW WALL BRACING
METHOD WITHOUT HOLD-DOWNS
ALT. |
| 1
S2.1 | TYPICAL STRUCTURAL GARAGE
SLAB PLAN | △ | COLUMN AND PIER PAD SCHEDULE
(SHEET S2.0) |

EXPANSIVE SOILS DISCLAIMER:
THESE PLANS HAVE BEEN PREPARED BASED ON A PRESUMPTIVE ALLOWABLE BEARING CAPACITY AS ALLOWED BY IRC CODE AND THE LOCAL ENFORCING JURISDICTION.
APEX ENGINEERS, INC. (APEX) RECOMMENDS THAT ALL FOOTING EXCAVATIONS BE EVALUATED BY A LICENSED GEOTECHNICAL ENGINEER PRIOR TO THE PLACEMENT OF ANY FOUNDATION ELEMENTS. GEOTECHNICAL INVESTIGATION AND/OR TESTING IS NOT A SERVICE PROVIDED OR OFFERED BY APEX.
APEX HAS NOT BEEN RETAINED TO DETERMINE THE EXPANSIVE SOIL CHARACTERISTICS OF THE SUBGRADE SOIL AND THEREFORE CANNOT BE HELD RESPONSIBLE FOR THE VOLUMETRIC CHANGES OF THE SOIL (INCLUDING BELOW THE BASEMENT SLAB), BY USE OF THESE PLANS WITHOUT AN ACCOMPANYING GEOTECHNICAL ENGINEERING REPORT, APEX SHALL NOT BE HELD LIABLE FOR ANY FUTURE MOVEMENT AND/OR DIFFERENTIAL MOVEMENT OF THE PROPOSED STRUCTURE AND THE POSSIBLE DAMAGE THAT MAY BE CAUSED AS A RESULT OF SUCH MOVEMENT. DAMAGE FROM EXPANSIVE SOILS AND/OR SETTLEMENT CAN RESULT IN AMONGST OTHER THINGS, THE FOLLOWING: BASEMENT SLAB HEAVE, SHEETROCK CRACKS, WINDOWS AND DOOR BECOMING OUT OF PLUMB AND STICKING AND/OR NOT OPENING, DAMAGE TO TILE, MOULDING, AND OTHER COSMETIC FINISHES.

ALL WINDOWS SIZES ARE EXPRESSED
IN FEET AND INCHES TO THE UNIT
SIZE.

New Mark Homes
P.O. Box 12025
Parkville, Missouri 64152
Ph. (816) 969-9010



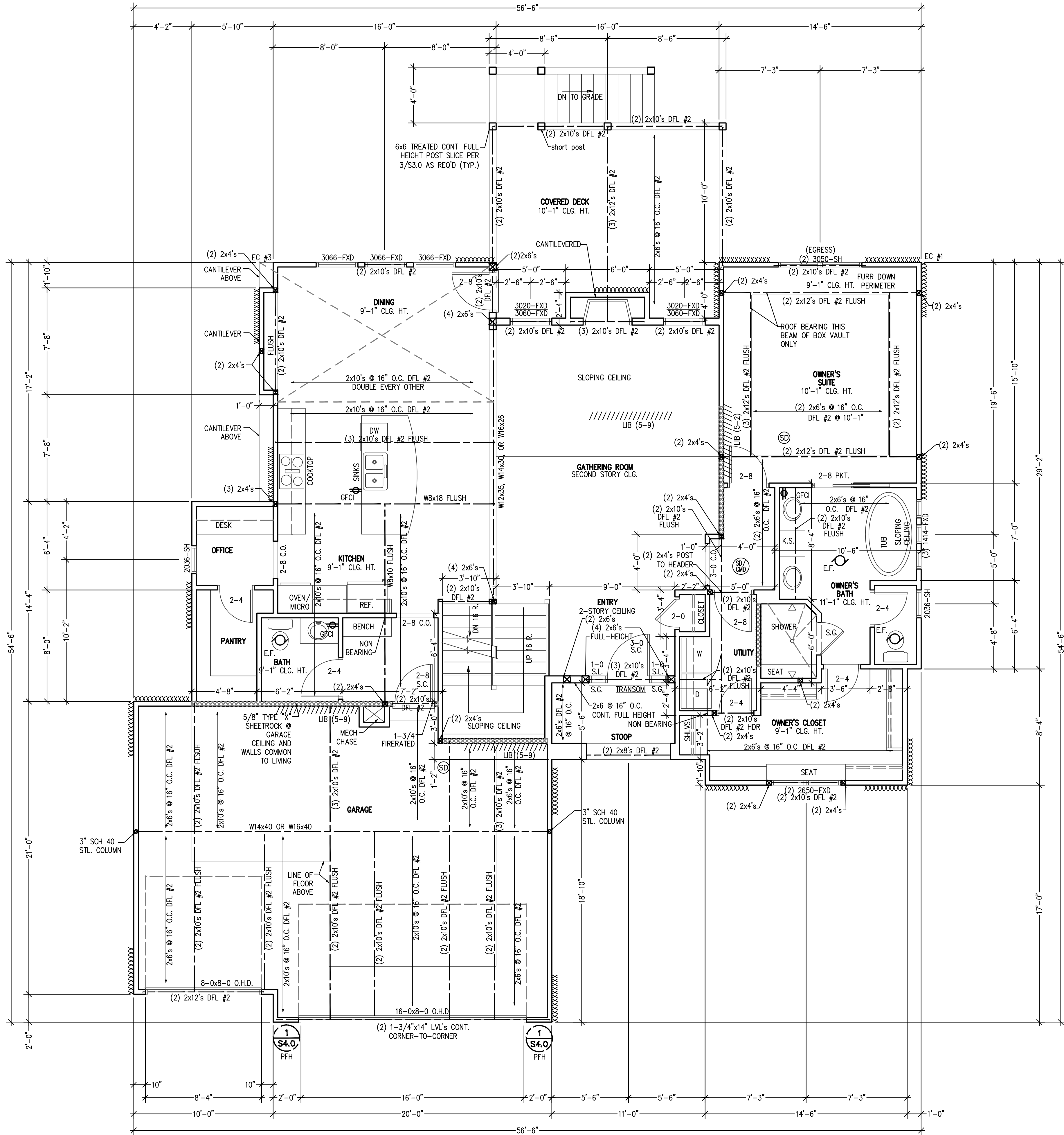
APEX ENGINEERS, INC.
902 LOCUST ST
KANSAS CITY, MO 64108
816.421.3222
STRUCTURAL DESIGN REVIEW
KANSAS ENGINEERING LICENSE: 090
MISSOURI ENGINEERING LICENSE: 2003004673

Timberland Spec
2763 S.W. 12th Terr. - Highland Meadows - Lot 136
Lees Summit, Missouri
© Copyright 2023

DRAWN BY: CJD
CHECKED BY: CA
DATE: 4/12/2023

A2

NOTE:
PLANS DESIGNED PER IRC AS
ADOPTED BY GOVERNING JURISDICTION



FIRST FLOOR PLAN
SCALE: 1/4" = 1'-0"

STRUCTURAL NOTES:
- ALL UNMARKED HEADERS MIN
(2)#2-2x10
- ALL HEADERS AND BEAMS MIN #2
GRADE DFL (OR EQ.)
- [XXXXX] = BEARING WALL

BRACED WALL METHODOLOGY
CONTINUOUS EXTERIOR SHEATHING PER WSP METHOD (BELOW)
UNLESS OTHERWISE NOTED ON THE PLAN

XXXX EXTERIOR BRACED WALLS:

WSP METHOD: WOOD STRUCTURAL PANEL SHEATHING WITH A THICKNESS NOT LESS THAN 3/8" WITH MINIMUM SPAN RATING OF 24/0 FOR 16" OC STUD SPACING WITH 6d COMMON NAILS AT 6" OC EDGES AND 12" OC FIELD OR SHEATHING THICKNESS NOT LESS THAN 1/2" WITH MINIMUM SPAN RATING OF 24/0 FOR 24" OC SPACING WITH 8d COMMON NAILS AT 6" OC EDGES AND 12" OC IN FIELD.
(NOTE: FRAMING MEMBERS 16" OC MAX, UNLOCKED, AND WITH SHEATHING APPLIED DIRECTLY TO FRAMING MEMBERS)

//// INTERIOR BRACED WALLS (REF 2-S4.0):

GB METHOD: 1/2" MIN. GYPSUM BOARD OVER STUDS SPACED 24" MAX. FASTENED WITH No 6 - 1 1/2" TYPE 'W' OR 'S' DRYWALL SCREWS AT 7" OC EDGES AND FIELD (MIN. 4'-0" SECTION FOR BOTH SIDES.)

OR

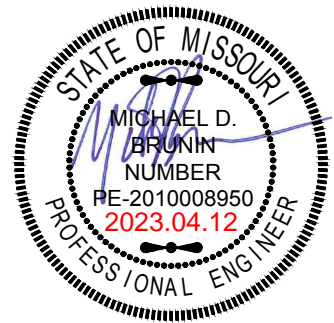
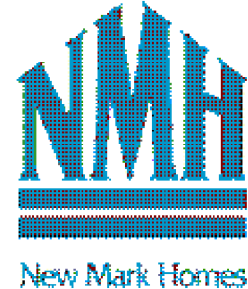
LIB METHOD: 1x4 WOOD FASTENED WITH (3) 8d COMMON NAILS OR SIMPSON / USP 16 GA. TYPE WB (OR EQUAL) STL. X-BRACE(S) AT 45° TO 60° ANGLES, MAXIMUM 16" O.C. STUD FASTENED PER MANUFACTURER'S SPECIFICATIONS.

*ALL WINDOWS TO HAVE U = 0.35 OR LESS.

ALL WINDOWS SIZES ARE EXPRESSED
IN FEET AND INCHES TO THE UNIT
SIZE.

NOTE:
PLANS DESIGNED PER IRC AS
ADOPTED BY GOVERNING JURISDICTION

New Mark Homes
P.O. Box 12025
Parkville, Missouri 64152
Ph. (816) 969-9010



APEX ENGINEERS, INC.
1025 LOCUST ST
KANSAS CITY, MO 64108
816.421.3222

STRUCTURAL DESIGN REVIEW
KANSAS ENGINEERING LICENSE: 980
MISSOURI ENGINEERING LICENSE: 200304673

Timberland Spec
2763 S.W. 12th Terr. - Highland Meadows - Lot 136
Lees Summit, Missouri

© Copyright 2023

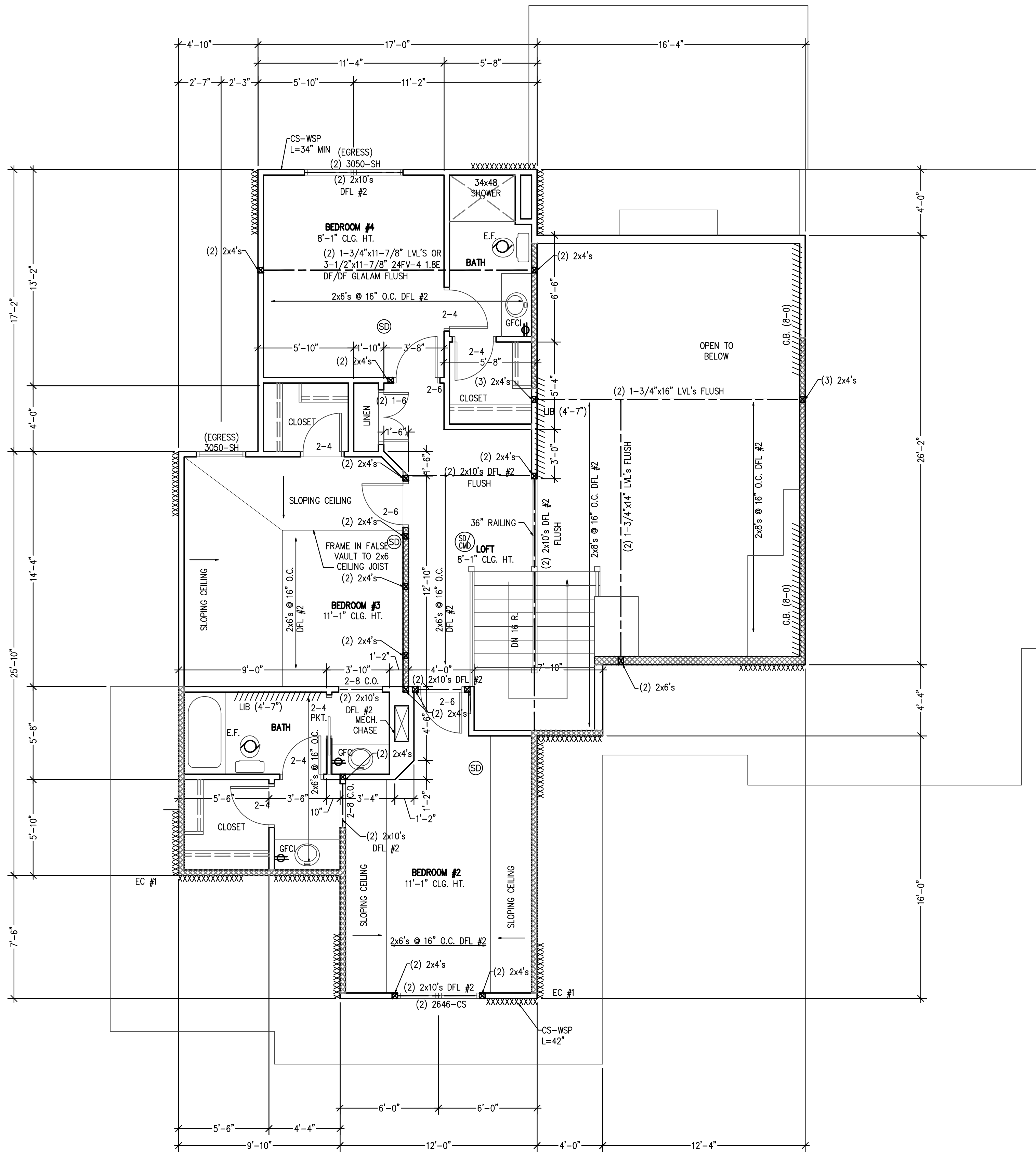
DRAWN BY: CJD

CHECKED BY: CA

DATE: 4/12/2023

A3

PROJ. 23-314



SECOND FLOOR PLAN
SCALE: 1/4" = 1'-0"

*ALL WINDOWS TO HAVE U = 0.35 OR LESS.

ALL WINDOWS SIZES ARE EXPRESSED
IN FEET AND INCHES TO THE UNIT
SIZE.

NOTE:
PLANS DESIGNED PER IRC AS
ADOPTED BY GOVERNING JURISDICTION

STRUCTURAL NOTES:
- ALL UNMARKED HEADERS MIN
(2)#2-2x10
- ALL HEADERS AND BEAMS MIN #2
GRADE DFL (OR EQ.)
- [XXXXXX] = BEARING WALL

BRACED WALL METHODOLOGY
CONTINUOUS EXTERIOR SHEATHING PER WSP METHOD (BELOW)
UNLESS OTHERWISE NOTED ON THE PLAN

XXXX EXTERIOR BRACED WALLS:

WSP METHOD: WOOD STRUCTURAL PANEL SHEATHING WITH A THICKNESS NOT LESS THAN
3/8" WITH MINIMUM SPAN RATING OF 24/0 FOR 16" OC STUD SPACING WITH 6d
COMMON NAILS AT 6" OC EDGES AND 12" OC FIELD OR SHEATHING
THICKNESS NOT LESS THAN 1/2" WITH MINIMUM SPAN RATING OF 24/0 FOR 24" OC
STUD SPACING WITH 8d COMMON NAILS AT 6" OC EDGES AND 12" OC IN FIELD.
(NOTE: FRAMING MEMBERS 16" OC MAX, UNBLOCKED, AND WITH SHEATHING APPLIED DIRECTLY TO FRAMING
MEMBERS)

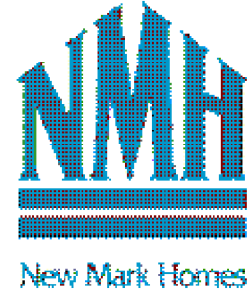
//// INTERIOR BRACED WALLS (REF 2-S4.0):

GB METHOD: 1/2" MIN. GYPSUM BOARD OVER STUDS SPACED 24" MAX. FASTENED WITH
No 6 - 1 1/4" TYPE 'W' OR 'S' DRYWALL SCREWS AT 7" OC EDGES AND FIELD
(MIN. 4'-0" SECTION FOR BOTH SIDES.)

OR

LIB METHOD: 1x4 WOOD FASTENED WITH (3) 8d COMMON NAILS OR SIMPSON / USP 16 GA.
TYPE WB (OR EQUAL) STL. X-BRACE(S) AT 45° TO 60° ANGLES, MAXIMUM 16"
O.C. STUD FASTENED PER MANUFACTURER'S SPECIFICATIONS.

New Mark Homes
P.O. Box 12025
Parkville, Missouri 64152
Ph. (816) 969-9010



APEX ENGINEERS, INC.
1605 LOCUST ST
KANSAS CITY, MO 64108
816.421.3222

STRUCTURAL DESIGN REVIEW
KANSAS ENGINEERING LICENSE: 090
MISSOURI ENGINEERING LICENSE: 2003004673

Timberland Spec
2763 S. W. 12th Terr. - Highland Meadows - Lot 136
Lees Summit, Missouri

Copyright 2023

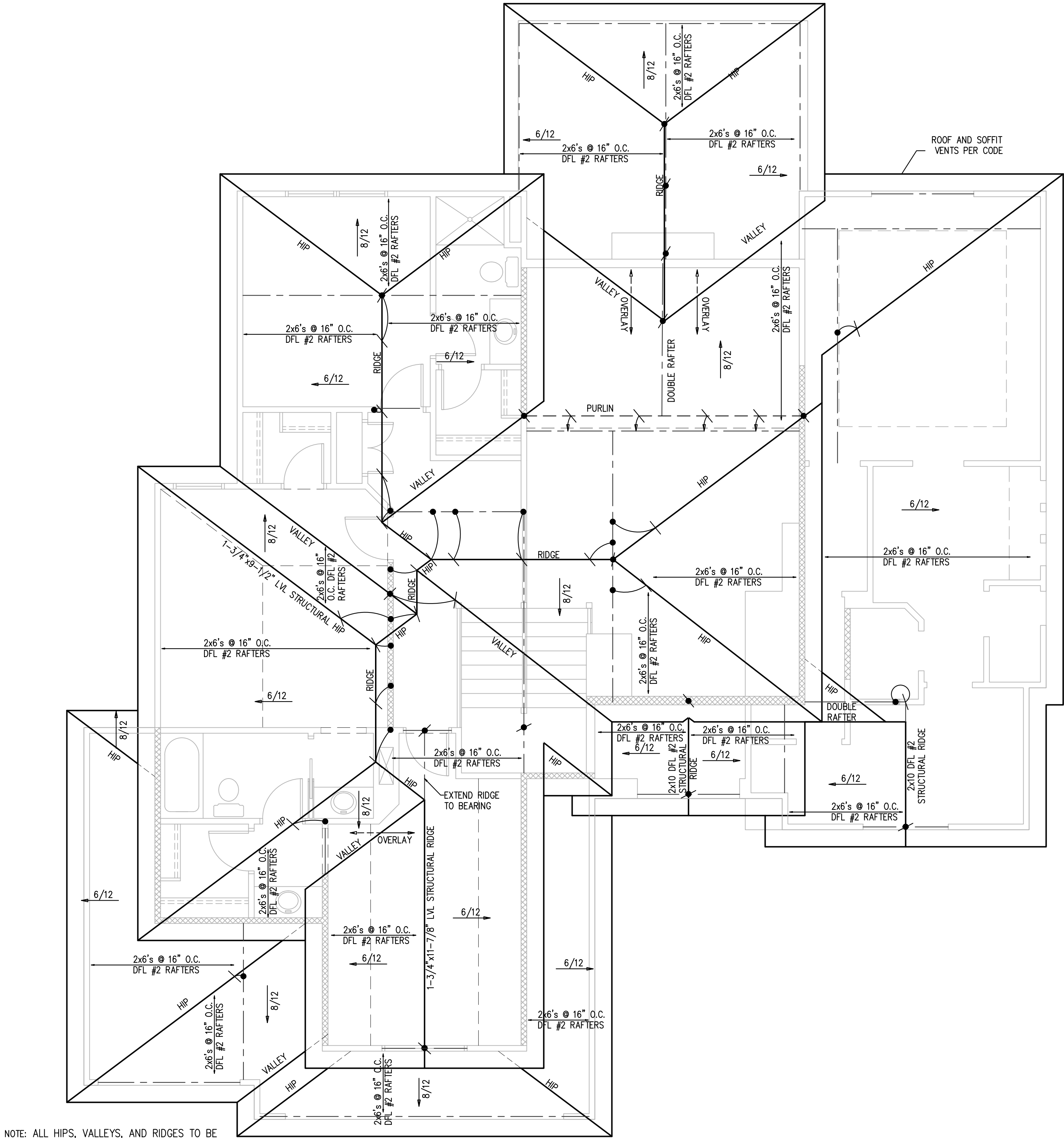
DRAWN BY: CJD

CHECKED BY: CA

DATE: 4/12/2023

A4

PROJ. 23-314



NOTE: ALL HIPs, VALLEYS, AND RIDGES TO BE
#2-2x10 DFL UNLESS DESIGNATED AS
STRUCTURAL

ROOF PLAN

SCALE: 1/4" = 1'-0"

STRUCTURAL NOTES:
- ALL UNMARKED HEADERS MIN
(2)#2-2x10
- ALL HEADERS AND BEAMS MIN #2
GRADE DFL (OR EQ.)
- [XXXXXX] = BEARING WALL

ROOF FRAMING NOTES

ROOF DESIGNED FOR LIGHT ROOF COVERING
30psf TOTAL LOAD [10psf DL, 20psf LL (SL)]

ROOF SYSTEM IS DESIGNED TO MEET REQUIREMENTS
OF IRC 802

*RAFTERS (HEM-FIR, DOUG-FIR, OR EQUAL):
SEE SPAN CHARTS BELOW

CODE MINIMUM

RAFTERS	SPACING	MAX HORIZONTAL CLEARSPAN
#2-2x6	AT 24" OC	11'-7"
#2-2x6	AT 16" OC	14'-2"
#2-2x8	AT 24" OC	14'-8"
#2-2x8	AT 16" OC	17'-11"
#2-2x10	AT 24" OC	17'-10"
#2-2x10	AT 16" OC	21'-11"

NOTE: CODE MINIMUM ALLOWS FOR A RAFTER DEFLECTION OF L/180 TOTAL LOAD

HIGHER PERFORMANCE

RAFTERS	SPACING	MAX HORIZONTAL CLEARSPAN
#2-2x6	AT 24" OC	8'-6"
#2-2x6	AT 16" OC	9'-9"
#2-2x8	AT 24" OC	11'-3"
#2-2x8	AT 16" OC	12'-9"
#2-2x10	AT 24" OC	14'-3"
#2-2x10	AT 16" OC	16'-3"

APEX ENGINEERS, INC. RECOMMENDED
DEFLECTION = L/360 LIVE LOAD, L/240 TOTAL LOAD

*RIDGE BOARDS ARE (UNLESS OTHERWISE NOTED)

#2-2x10 UP TO 9:12 PITCH

#2-2x12 OVER 9:12 PITCH

*ALL HIPs AND VALLEYS ARE (UNLESS OTHERWISE NOTED)

#2-2x10 UP TO 9:12 PITCH

#2-2x12 OVER 9:12 PITCH

#2-2x10 HIP/VALLEY, MAX CLEAR SPAN: 11'-11"

#2-2x12 HIP VALLEY, MAX HORIZ. CLEAR SPAN: 12'-11"

*PURLINS ARE 2x6 MIN

- PURLIN STRUTS ARE AT 4'-0" OC

- PURLIN STRUTS SHALL BE INSTALLED AT NOT LESS

THAN A 45 DEGREE ANGLE WITH THE HORIZONTAL

- ALL PURLIN STRUTS SHALL HAVE A MAX UNBRACED

LENGTH OF 8'-0"

- PURLIN STRUTS SHALL BE CONSTRUCTED IN A "T"

CONFIGURATION AND PER THE FOLLOWING CHART:

PURLIN STRUT	MAX PURLIN STRUT LENGTH
(2)2x4	8'-0"
(1)2x4 AND (1)2x6	12'-0"
(1)2x6 AND (1)2x8	20'-0"
(2)2x6 AND (1)2x8	30'-0"
CONSULT ARCH ENGR	>30'-0"

*EACH END OF STRUT SHALL BE FASTENED WITH MIN (3)#8

OR (2)16d NAILS

*RIDGE BRACERS ARE SAME AS PURLIN BRACES-SPACING,
SIZE, CONFIGURATION, AND INSTALLATION (SEE PURLIN
BRACE NOTES ABOVE)

*HIP AND VALLEY BRACES ARE THE SAME AS PURLINS SIZE,
CONFIGURATION, AND INSTALLATION (SEE PURLIN BRACE
NOTES ABOVE)

= ROOF BRACE/STRUT (PER CHART)
-SLASH IS TOP END OF BRACE
-CIRCLE IS BOTTOM END OF BRACE

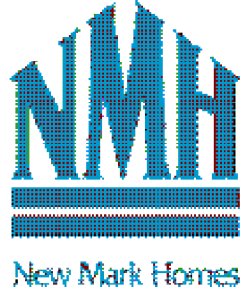
= PURLIN STRUTS AT 48" OC (PER CHART) U.N.O.
-SLASH IS TOP END OF BRACE
-ARROW IS BEARING LOCATION

[XXXXXX] DENOTES BEARING WALL
- - - - - DENOTES PURLIN
- - - - - DENOTES BEARING STRUCTURE

- THIS IS AN ENGINEERED ROOF STRUCTURE DESIGNED FOR COMPLIANCE WITH IRC 802.3, BUILD AS SHOWN WITH NO DEVIATIONS.**
- ALL HIPs ARE DESIGNED TO BE CONTROLLED BY BENDING.**
- SHEAR AT BEARING WITH MIN 5½" DEPTH DOES NOT CONTROL DESIGN. FOR VALLEYS REF 4/S3.2**

NOTE:
PLANS DESIGNED PER IRC AS
ADOPTED BY GOVERNING JURISDICTION

New Mark Homes
P.O. Box 12025
Parkville, Missouri 64152
Ph. (816) 969-9010



APEX ENGINEERS, INC.
1605 LOCUST ST
KANSAS CITY, MO 64108
816.421.3222

STRUCTURAL DESIGN REVIEW
980
KANSAS ENGINEERING LICENSE:
MISSOURI ENGINEERING LICENSE:
2003004673

Timberland Spec
2763 S. W. 12th Terr. - Highland Meadows - Lot 136
Lees Summit, Missouri

Copyright 2023

DRAWN BY: CJD

CHECKED BY: CA

DATE: 4/12/2023

PROJ. 23-314

SHEATHING AND FRAMING FASTENING SCHEDULE		
BUILDING COMPONENT	MATERIAL	FASTENING
ROOF SHEATHING¹	7/16" PLYWOOD 1x4 #3 FURRING	16 GA x 1-3/4" STAPLES AT 3" OC EDGES AND 6" OC IN FIELD 1/2" CROWN STAPLES
FLOOR SHEATHING¹	3/4" T&G YELLOW PINE PLYWOOD APPLIED PERPENDICULAR TO JOISTS AND ENDS STAGGERED	8d COMMON NAILS AT 6" OC EDGES AND 12" OC IN THE FIELD 14 GA x 2" STAPLES AT 4" OC EDGES AND 8" OC IN THE FIELD 12.5 GA x 1-1/2" RING OR SCREW SHANK NAILS AT 6" OC EDGES AND 8" OC IN THE FIELD
CEILING COVERING¹	1/2" GYPSUM SHEATHING	7" OC NAILED / 12" OC SCREWED WITH 13 GA, 1-3/8" LONG, 19/64" HEAD; 0.098 DIA, 1-1/4" LONG, ANG. RINDEX; 5d COOLER NAIL, 0.086 DIA, 1-5/8" LONG, 15/64" HEAD; OR GYP BD NAIL, 0.086 DIA, 1-5/8" LONG, 9/32" HEAD
INTERIOR WALL COVERING¹	1/2" GYPSUM SHEATHING	8d COMMON NAILS: 1-5/8" GALVANIZED STAPLES: 1-1/4" SCREWS, TYPE W OR S: AT 4" OC EDGES AND 8" OC IN THE FIELD
EXTERIOR WALL SHEATHING	MIN 3/8" APA RATED SHEATHING	8d COMMON NAILS AT 6" OC EDGES AND 12" OC IN THE FIELD
CONVENTIONAL WOOD FRAMED WALLS	*SUPPORTING 2 FLOORS, ROOF, AND CEILINGS OR LESS *HEIGHT: 10'-0" OR LESS *SIZE: NOM 2x4 (NOM 2x6 WHEN SUPPORTING 2 FLOORS, CEILING, AND ROOF) *SPECIES: DOUG-FIR, HEM-FIR, SOUTH PINE, SPRUCE-PINE-FIR *MAXIMUM SPACING 16" OC *STUDS 1/0 LENGTH OR LESS SHALL BE #3 STANDARD, OR STUD GRADE *STUDS OVER 1/0 LENGTH SHALL BE MIN #2 GRADE	*TOE NAIL RIM JOIST TO SILL OR TOP PLATE: 8d COMMON AT 6" OC; 3"x30, 13"x1" AT 8" OC; 3"x30, 13"x1" AT 6" OC *TOE NAIL STUD TO TOP AND SOLE PLATE: 14 GA COMMON; (4) 3"x30, 13"x1" END NAIL TOP AND SOLE PLATE TO STUD: (2) 16d COMMON; (3) 3"x30, 13"x1" *FACE NAIL BUILT-UP CORNER STUDS: FACE NAIL BUILT-UP CORNER STUDS (AT BRACED WALL PANELS): FACE NAIL JACK STUDS/STIMMERS SUPPORTING HEADERS WITH: FACE NAIL DBL TOP PLATE: 16d COMMON NAILS AT 16" OC; 3"x30, 13"x1" AT 12" OC 10d NAILS AT 6" OC 16d COMMON AT 16" OC; 3"x30, 13"x1" AT 12" OC; 3"x30, 12"x8" AT 12" OC *DBL TOP PLATES WITH MIN 4" OFFSET OF EACH FACE NAIL LAPPED AREA WITH: FACE NAIL DBL TOP PLATES AT LAPPED CORNERS AND INTERSECTIONS WITH: FACE NAIL SOLE PLATE TO FRAMING SYSTEM WITH: *TONGAL BRIDGING TO JOIST: EACH END FACE NAIL LEADER STRIPS SUPPORTING JOISTS OR RAFTERS WITH: (1) 16d COMMON; (12) 3"x30, 13"x1"; (12) 3"x30, 12"x8" (2) 16d COMMON; (3) 3"x30, 13"x1"; (3) 3"x30, 12"x8" 16d COMMON AT 16" OC; 3"x30, 13"x1" AT 12" OC (2) 8d COMMON; (2) 3"x30, 13"x1"; (3) 3"x30, 12"x8" (3) 16d COMMON; (4) 3"x30, 13"x1"; (4) 3"x30, 12"x8"
CONVENTIONAL WOOD HEADER FRAMING	PER PLAN	*TOE NAIL HEADERS TO WALL STUDS WITH (4) 8d NAILS AT EACH END. *FACE NAIL DOUBLE PIECE HEADERS WITH 16d NAILS AT 16" CENTERS ALONG EACH EDGE.
RAFTER TIES²	MIN 2x4 MEMBERS AT EACH RAFTER	REF TABLE R802.5.2
COLLAR TIES	MIN 1x4 MEMBERS AT 48" OC	FACE NAIL TO RAFTERS IN UPPER 1/3 OF ATTIC SPACE WITH (3) 10d NAILS AT EACH
<p>1. NOTE: ALL SHEATHING MATERIALS TO BE APPLIED PERPENDICULAR TO JOISTS AND ENDS STAGGERED.</p> <p>2. RAFTER TIES SHALL NOT BE REQUIRED WHEN A STRUCTURAL RIDGE HAS BEEN PROVIDED AND ADEQUATELY DESIGNED (AS IN A FULLY VAULTED ROOM). SUCH SHALL BE NOTED AS "STRUCTURAL" ON THE PLAN.</p>		
BUILDING COMPONENT	FASTEN TO	FASTEN WITH
RAFTERS	TO RIDGE/VALLEY/HIP RAFTERS TO PLATE	TOENAIL WITH (4) 16d ENDNAIL WITH (3) 16d TOENAIL WITH (2) 16d
CEILING JOISTS	TO TOP PLATE WHERE CEILING JOISTS RUN PARALLEL TO RAFTERS FACE NAIL TO RAFTERS WITH (3) 10d MIN	TOENAIL WITH (3) 8d AT EACH END
FLOOR JOISTS	TO SILL OR GIRDER TO RIM JOIST	TOENAIL WITH: (3) 8d COMMON; (3) 3"x30, 13"x1"; (4) 3"x30, 12"x8" ENDNAIL WITH: (3) 16d COMMON; (4) 3"x30, 13"x1"; (4) 3"x30, 12"x8"
BRACED WALL PANELS PERT TO FRAMING MEMBERS ABOVE/BELOW: PARALLEL TO FRAMING MEMBERS ABOVE/BELOW:	TO FRAMING MEMBER TO FRAMING AND BLOCKING AT 16" OC	SOLE PL, 16" OC WITH: (3) 16d COMMON; (4) 3"x30, 13"x1" TOP PL, 8" OC WITH: 8d COMMON; 3"x30, 13"x1" SOLE PL, 16" OC WITH: (3) 16d COMMON; (4) 3"x30, 13"x1" AND AT EACH BLOCK: (3) 16d COMMON; (4) 3"x30, 13"x1" TOP PL, 8" OC WITH: 8d COMMON; 3"x30, 13"x1" AND AT EACH BLOCK: (3) 16d COMMON; 3"x30, 13"x1"

NOTE: MEMBER THICKNESS AND FASTENING LISTED IN THIS SCHEDULE ARE MINIMUM IRC REQUIREMENTS. SPECIFIC PROJECT REQUIREMENTS NOTED WITHIN THE STRUCTURAL OR ARCHITECTURAL DRAWINGS, IF REQUIRED BY APEX ENGINEERS DESIGN NEEDING TO BE MORE STRINGENT, SHALL BE FOLLOWED.

1. LIGHTING FIXTURES PENETRATING THE THERMAL ENVELOPE SHALL BE IC-RATED, LEAKAGE RATED, AND SEALED TO THE GYPSUM WALLBOARD AS REQUIRED PER N1103.2.4.
2. PROGRAMMABLE THERMOSTATS SHALL BE INSTALLED AS REQUIRED PER N1103.1.
3. AIR HANDLERS SHALL BE RATED FOR MAXIMUM 2% AIR LEAKAGE RATE PER N1103.3.2.1.
4. BUILDING FRAMING CAVITIES SHALL NOT BE USED AS DUCTS OR PLENUMS PER N1103.3.5
5. HOT WATER PIPES SHALL BE INSULATED AS REQUIRED PER N1103.4.
6. ALL EXHAUST FANS SHALL TERMINATE TO THE BUILDING EXTERIOR AS REQUIRED PER N1103.1.
7. MAKEUP AIR SYSTEMS SHALL BE INSTALLED FOR KITCHEN EXHAUST HOODS THAT EXCEED 400 CFM AS REQUIRED PER M1503.6.
8. AN AIR HANDLING SYSTEM SHALL NOT SERVE BOTH THE LIVING SPACE AND THE GARAGE PER M1601.6.

<h1>ENERGY CONSERVATION</h1>		
<p>THE ENERGY EFFICIENCY OF THE DWELLING SHALL COMPLY WITH THE FOLLOWING TABLE(S) (WHERE THERE ARE DISCREPANCIES BETWEEN THIS TABLE AND THE PLANS, THE MOST RESTRICTIVE SHALL APPLY). IF TABLE 1 IS NOT COMPLETED AND ACCOMPANIED BY RESCHECK CALCULATIONS, THEN TABLE 2 SHALL BE APPLIED.</p>		
<p>TABLE 1 - ResCheck COMPLIANCE SOFTWARE (FILL IN APPLICABLE VALUES FROM ResCheck CALCS.)</p>		
BUILDING ELEMENT	MIN VALUE	
WALLS - FRAMED	R-	R-
WALLS - BASEMENT	R-	R-
FLOORS - UNCONDITIONED SPACE	R-	R-
FLOORS - OVER OUTSIDE AIR	R-	R-
FLOORS - CRAWL SPACE	R-	R-
SLAB - PERIMETER	R-	R-
CEILING - FLAT	R-	R-
CEILING - CATHEDRAL	R-	R-
DOORS - GLASS	U-	U-
DOORS - SOLID	U-	U-
WINDOWS - OPERABLE	U-	U-
WINDOWS - FIXED	U-	U-
WINDOWS - OTHER	U-	U-
FURNACE	AFUE-	AFUE-
AIR CONDITIONER	SEER-	SEER-
<p>NOTE: FOR USE OF TABLE 1 A ResCheck COMPLIANCE FORM MUST BE SUBMITTED WITH PLANS.</p>		
<p>TABLE 2 - PREScriptive ENVELOPE (MIN PRESCRIPTIVE APPROACH ACCEPTABLE FOR ANY DWELLING.)</p>		
BUILDING ELEMENT	MIN VALUE	
CEILING - FLAT	R-49	R-49
CEILING - CATHEDRAL**	R-30	R-30
CEILING - CATHEDRAL	R-38	R-38
FLOORS - UNCONDITIONED SPACED	R-19	R-19
FLOORS - OVER OUTSIDE AIR	R-30	R-30
WALLS - BASEMENT	R-10 (CONT) OR R-13 (CAVITY)	R-10 (FOR 2FT)
CONCRETE SLAB ON GRADE	R-10 (FOR 2FT)	U=0.55
SKYLIGHTS	U=0.55	U=0.55
WALLS - EXTERIOR (2x4)	R-13 (CAVITY) + R-5 (CONT)	R-13 (CAVITY) + R-5 (CONT)
WALLS - EXTERIOR (2x6)	R-20	R-20
WALLS - CRAWL SPACE	R-19	R-19
GLAZING*	U<=0.32	U<=0.32
GLAZING*	SHGC<=0.40	SHGC<=0.40
<p>NOTE:</p> <p>*PERFUR U-FACTOR FOR DOUBLE PANE, ARGON FILLED LOW-E TREATMENT IS U=0.35</p> <p>**LIMITED TO AREAS LESS THAN 500 SQ-FT OR 20% OF CEILING AREA.</p>		

1. THE ARCHITECT OR ENGINEER OF RECORD SHALL LIST THE DEFERRED SUBMITTALS ON THE PLANS FOR REVIEW BY THE BUILDING OFFICIAL. DOCUMENTS FOR DEFERRED SUBMITTAL ITEMS SHALL BE SUBMITTED TO THE ARCHITECT OR ENGINEER OF RECORD WHO SHALL REVIEW THEM AND FORWARD THEM TO THE BUILDING OFFICIAL WITH A NOTATION INDICATING THAT THE DEFERRED SUBMITTAL DOCUMENTS HAVE BEEN REVIEWED AND FOUND TO BE IN THE GENERAL CONFORMANCE TO THE DESIGN OF THE BUILDING. THE DEFERRED SUBMITTAL ITEMS SHALL NOT BE INSTALLED UNTIL THE DEFERRED SUBMITTAL DOCUMENTS HAVE BEEN APPROVED BY THE BUILDING OFFICIAL. DEFERRED SUBMITTALS ARE DEFINED AS THOSE PORTIONS OF THE DESIGN THAT ARE NOT SUBMITTED AT THE TIME OF THE APPLICATION AND THAT ARE TO BE SUBMITTED TO THE BUILDING OFFICIAL WITH A SPECIFIED PERIOD. DEFERRAL OF ANY SUBMITTAL ITEMS SHALL HAVE THE PRIOR APPROVAL OF THE BUILDING OFFICIAL.

2. DEFERRED SUBMITTAL ITEMS (WHEN APPLICABLE):

- A. TRUSSES
- B. I-JOISTS
- C. GUARDRAILS AND HANDRAILS
- D. STEEL FABRICATED STAIRS
- E. PRE-MANUFACTURED CANOPIES AND AWNINGS
- F. PRECAST HOLLOW CORE SLABS
- G. GROUND IMPROVEMENT AND/OR STRUCTURAL FOUNDATION SOLUTIONS (SUCH AS DRILLED PIERS)

CONCRETE SHALL BE AIR ENTRAINED WITH A MINIMUM COMPRESSIVE STRENGTH OF 28 DAYS OF 2,500 PSI FOR BASEMENT AND INTERIOR FLOOR SLABS, 3,000 PSI FOR BASEMENT AND FOUNDATION WALLS, AND 3,500 FOR PORCHES, CARPORTS, AND GARAGE FLOOR SLABS.

GLAZING IN HAZARDOUS LOCATIONS AS IDENTIFIED IN IRC SECTION R308.4 SHALL BE OF APPROVED SAFETY GLAZING MATERIALS: GLASS IN STORM DOORS; INDIVIDUAL FIXED OR OPENABLE PANELS ADJACENT TO A DOOR WHERE THE NEAREST VERTICAL EDGE IS WITHIN A 24" ARCH OF THE DOOR IN A CLOSED POSITION AND WHOSE BOTTOM EDGE IS WITHIN 60" OF THE FLOOR; WALLS ENCLOSING STAIRWAYS AND LANDINGS WHERE THE GLAZING IS WITHIN 60" OF THE TOP OR BOTTOM OF THE STAIR; ENCLOSURES FOR SPAS, TUBS, SHOWERS, AND WHIRLPOOLS; GLAZING IN FIXED OR OPENABLE PANELS EXCEEDING 9 SQUARE FEET AND WHOSE BOTTOM EDGE IS LESS THAN 18" ABOVE THE FLOOR OR WALKING SURFACE WITHIN 36".

1. PROVIDE ONE WINDOW FROM EACH BEDROOM THAT HAS A MINIMUM OPENABLE AREA OF 5.7 SQUARE FEET WITH A MINIMUM OPENABLE HEIGHT OF 24 INCHES AND WIDTH OF 20 INCHES.
2. BASEMENTS SHALL BE MEANT TO MEET THE REQUIREMENTS OF IRC SECTION 310.
3. SMOKE ALARMS SHALL BE INSTALLED AS REQUIRED PER IRC 2018 SECTION R314.
4. PROVIDE SMOKE ALARMS IN EACH SLEEPING ROOM, OUTSIDE OF EACH SLEEPING AREA, ON EACH FLOOR INCLUDING BASEMENTS AND HABITABLE ATTICS, AND NOT LESS THAN 3'-0" HORIZONTALLY FROM DOOR OR OPENING OF A BATHROOM THAT CONTAINS A BATHTUB OR SHOWER. ALARMS SHALL BE INTERCONNECTED SUCH AS TO SOUND WHEN ANY ONE ALARM IS ACTIVATED. THE OPERATION OF THE ALARMS IN THE DWELLING.
5. CARBON MONOXIDE ALARMS SHALL BE INSTALLED AS REQUIRED PER IRC 2018 SECTION R315.
6. CARBON MONOXIDE ALARMS SHALL BE INSTALLED OUTSIDE OF EACH SEPARATE SLEEPING AREA, WHERE A FUEL-BURNING APPLIANCE IS LOCATED WITHIN A BEDROOM OR ITS ATTACHED BATHROOM. A CARBON MONOXIDE ALARM SHALL BE INSTALLED WITHIN THE BEDROOM.

1. ALL LUMBER SIZES ARE FOR DOUGLAS FIR-LARCH UNLESS NOTED OTHERWISE.
2. ALL HEADERS TO BE MIN (2) #2-x10 UNLESS NOTED OTHERWISE.
3. BLOCK CANTILEVERS, DOORJAMBS, AND OVER BEAMS.
4. HEADERS TO BEAR ON A MINIMUM OF (2) 2x4 STUD POSTS UNLESS NOTED OTHERWISE.
5. JOIST NON-BEARING WALLS, OTHER THAN THOSE RESTING DIRECTLY ON THE FOOTING SHALL BE ISOLATED FROM THE FLOOR FRAMING ABOVE.
6. WHERE JOISTS RUN PARALLEL TO FOUNDATION WALLS, SOLID BLOCKING FOR A MINIMUM OF (2) JOIST SPACES BE PROVIDED TO A MAXIMUM OF 2'-0" CENTERS TO TRANSFER LATERAL LOADS ON THE WALL TO THE FLOOR DIAPHRAGM. THE BLOCKING SHALL BE SECURELY NAILED TO THE JOISTS AND FLOORING. NAIL JOISTS AND BLOCKING TO SILL PLATE WITH 16D (SEE SECTION R502.3(1)) NAILS. JOISTS ARE TO BE NAILED IN THE FIRST JOIST SPACE (NAIL 2x4s FLAT AT 2'-0" CENTERS WITHIN THE JOIST SPACE) AND THEN PROVIDE SOLID BLOCKING, INSTALLED UPRIGHT, IN THE NEXT TWO JOIST SPACES. SECURE THE 2x4s TO THE SILL PLATE WITH (4) 10d NAILS.
7. ALL SILLS AND ANCHORS SUPPORTED ON CONCRETE OR MASONRY AND FURRING ATTACHED TO CONCRETE OR MASONRY SHALL BE OF DECAY RESISTANT MATERIALS.
8. JOISTS UNDER BEARING PARTITIONS SHALL BE DOUBLED AND COMPLY WITH IRC SECTION R502.4.
9. JOISTS FRAMING FROM OPPOSITE SIDES OVER BEARING SUPPORTS SHALL LAP A MINIMUM OF 4'-0" AND BE NAILED TOGETHER WITH 4 MINIMUM 16D NAILS.
10. JOISTS FRAMING INTO A WOOD GIRDER OR BEAM SHALL BE SUPPORTED BY APPROVED FRAMING ANCHORS OR MINIMUM 2"x2" LEDGER STRIPS.
12. FRAMING OF OPENINGS - HEADERS AND TRIMMERS SHALL BE OF SUFFICIENT CROSS SECTION TO SUPPORT THE FLOOR FRAMING. TRIMMER JOISTS SHALL BE DOUBLED WHEN THE HEADER IS SUPPORTED MORE THAN 3'-0" FROM THE END OF THE TRIMMER. WOOD LAMINAR JOISTS WHEN THE HEADER SPAN EXCEEDS 4'-0", THE HEADER AND TRIMMER SHALL BE DOUBLED.
13. JOISTS AT SUPPORTS SHALL BE SUPPORTED Laterally AT THE ENDS BY FULL-DEPTH SOLID BLOCKING NOT LESS THAN 2" NOMINAL THICKNESS OR BY ATTACHMENT TO A HEADER, BAND OR RIM JOIST OR TO AN ADJOINING STUD OR OTHER MEMBER PROVIDED WITH LATERAL SUPPORT TO PREVENT ROTATION. A WATER RESISTIVE BARRIER SHALL BE PROVIDED OVER ALL EXTERIOR WALLS, ONE LAYER OF NO 15 ASPHALT FELT OR ANY OTHER BARRIER THAT MEETS ASTM D226 TYPE 1 FELT. (R703.2)
15. WHERE CEILING JOISTS ARE NOT INSTALLED CONNECTED TO THE RAFTERS AT THE TOP PLATE AND/OR WHERE CEILING JOISTS ARE NOT INSTALLED PARALLEL TO THE RAFTERS, RAFTER TIES SHALL BE INSTALLED IN THE LOWER PORTION OF THE RAFTERS AND IN ACCORDANCE WITH TABLE 1-51.0.
16. COLLAR TIES SHALL BE PROVIDED IN THE UPPER 1/3 OF THE ATTIC SPACE IN ACCORDANCE WITH TABLE 1-51.0.

1. THE GARAGE FLOOR SHALL SLOPE TOWARDS THE GARAGE DOORWAYS.
2. DOORS BETWEEN THE GARAGE AND THE DWELLING - MINIMUM 1-3/8" SOLID CORE OR HONEY COMBED STEEL DOOR OR 20-MINUTE FIRE RATED.
3. THE GARAGE SHALL BE SEPARATED FROM THE RESIDENCE AND ITS ATTIC BY 5/8" TYPE X GYPSUM BOARD, OR EQUIVALENT MATERIALS APPROVED FOR ONE-HOUR FIRE-RESISTIVE CONSTRUCTION, APPLIED TO GARAGE SIDE, WHERE THE SEPARATION IS A FLOOR-CEILING ASSEMBLY, THE STRUCTURE SUPPORTING THE SEPARATION SHALL ALSO BE PROTECTED BY 5/8" TYPE X GYPSUM BOARD, OR MATERIALS APPROVED FOR ONE-HOUR FIRE-RESISTIVE CONSTRUCTION OR EQUIVALENT, APPLIED TO THE GARAGE SIDE. PULL DOWN STAIRS LOCATED WITHIN GARAGE SHALL BE RATED TO BE ADEQUATELY PROTECTED BY MATERIALS APPROVED FOR ONE-HOUR FIRE-RESISTIVE CONSTRUCTION. ATTIC ACCESS PANELS LOCATED WITHIN GARAGE SHALL BE OF 5/8" TYPE X GYPSUM BOARD, OR MATERIALS FOR ONE-HOUR FIRE-RESISTIVE CONSTRUCTION.
4. GARAGE DOOR AND FRAME- THE H-FRAME FOR THE ATTACHMENT OF THE TRACK AND COUNTER BALANCE SHALL CONSIST OF THE FOLLOWING: 2x6 JOIST, JAMB AND TRACK RUNNING FROM THE FLOOR TO CEILING ATTACHED WITH 1-3/4" X 120" NAILS AT 7" OC STAGGERED WITH 7/8" 1-1/4" X 120" NAILS THRU THE JAMB INTO THE HEADER, MINIMUM 2x8 HEADER FOR ATTACHMENT OF COUNTER BALANCE SYSTEM.

1. STAIRWAYS SHALL PROVIDE A MAXIMUM 7-3/4" RISE AND MINIMUM 10" RUN.
2. PROVIDE MINIMUM 36" GUARDRAILS ON THE OPEN SIDES OF RAISED FLOORS, PORCHES, AND BALCONIES; MINIMUM 34" GUARDRAILS ON THE OPEN SIDES OF STAIRWAYS LOCATED MORE THAN 30" ABOVE THE FLOOR OR GRADE BELOW. GUARDRAIL ENCLOSURES SHALL HAVE INTERMEDIATE RAILS OR ORNAMENTAL FILLING THAT DOES NOT ALLOW PASSAGE OF A SPHERE 41 1/2" IN DIAMETER.
3. EACH STAIRWAY OF THREE OR MORE RISERS SHALL PROVIDE A CONTINUOUS HANDRAIL ON AT LEAST ONE SIDE BETWEEN 34" AND 38" ABOVE THE NOSING OF THE TREADS.
4. HANDRAILS SHALL HAVE A CIRCULAR CROSS SECTION OF 1-1/4" MINIMUM TO 2" MAXIMUM OR OTHER APPROVED GRASPABLE SHAPE PER IRC SECTION 311.7.5.5.
5. PROVIDE A MINIMUM 6'-8" OF HEADROOM CLEARANCE IN STAIRWAYS.
6. ENCLOSE ACCESSIBLE SPACE UNDER STAIRWAYS SHALL HAVE WALLS AND THE UNDERSIDE OF THE STAIR AND LANDING PROTECTED WITH 1/2" GYPSUM BOARD ON ENCLOSURE SIDE PER IRC SECTION 302.7.
7. SPIRAL STAIRS TO BE CONSTRUCTED PER IRC SECTION 311.7.10.1.
8. SPACE STRINGERS AT 16" OC MAX.

1. PLANS SHALL COMPLY WITH THE 2018 INTERNATIONAL RESIDENTIAL CODE WITH AMENDMENTS AS ADOPTED BY THE GOVERNING JURISDICTION. IF ANY CHANGES OR DEVIATIONS FROM THE PLANS ARE MADE DURING CONSTRUCTION, CONTRACTOR SHALL NOTIFY THE APPROPRIATE AUTHORITY AND ENGINEER OF RECORD, EITHER (OR BOTH) OF WHOM MAY REQUIRE REVISED DRAWINGS OR CALCULATIONS AT ITS DISCRETION.

2. REPRODUCTION, ALTERATION, OR RE-USE BY ANY METHOD OF ALL OR PART OF THESE STRUCTURAL PLANS OR VARIATIONS THEREOF WITHOUT WRITTEN PERMISSION FROM APEX ENGINEERS, INC IS STRICTLY PROHIBITED. THE DRAWINGS AND DETAILS OF THIS SHEET SET, BEING INSTRUMENTS OF SERVICE, ARE AND SHALL REMAIN THE PROPERTY OF APEX ENGINEERS, INC. AN UNSEALED VERSION, OR A VERSION VOID OF APEX ENGINEERS LOGO AND/OR TITLE BLOCK, SHALL BE CONSIDERED AN UNAUTHORIZED REPRODUCTION.

3. WHERE DISCREPANCIES EXIST BETWEEN THE STANDARD COMMENTS, NOTES FROM THE DESIGN PROFESSIONAL, OR THE CODE, THE MOST RESTRICTIVE SHALL APPLY. THE DWELLING SHALL COMPLY WITH THE FOLLOWING LOAD CONDITIONS:

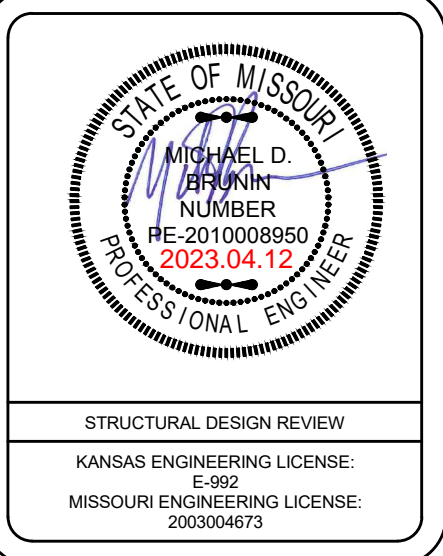
AREA	MIN DEAD LOAD	MIN LIVE LOAD
EXTERIOR BALCONIES	10 PSF	60 PSF
DECKS	10 PSF	40 PSF
CRAWLING JOISTS/ATTICS WITHOUT STORAGE - SCUTTLE ACCESS ONLY ONLY ROOF SLOPE 3:12 OR LESS	5 PSF	10 PSF
CEILING JOISTS/ATTICS WITHOUT STORAGE - SCUTTLE ACCESS ONLY ROOF SLOPE OVER 3:12 OR LESS	10 PSF	10 PSF
CEILING JOISTS/ATTICS WITH STORAGE - DO NOT PULL DOWN LADDER ACCESS	10 PSF	20 PSF
ROOMS - NON-SLEEPING	10 PSF	40 PSF
ROOMS - SLEEPING	10 PSF	30 PSF
ROOF - LIGHT ROOF COVERING	10 PSF	20 PSF
ROOF - HEAVY ROOF COVERING	20 PSF	20 PSF
CONCRETE TILES/SLATE		
NOTE: HEAVY ROOF COVERING WILL NOT BE INSTALLED OR USED IN THE DESIGN CALCULATIONS UNLESS IT IS SPECIFICALLY NOTED ON THE PLANS THAT THE DESIGN IS FOR HEAVY ROOF COVERINGS.		

1. THE FOUNDATION DESIGN SHALL BE BASED ON A MINIMUM SOIL BEARING CAPACITY OF 2000 PSF. UNLESS OTHERWISE INDICATED ON THE PLANS OR IF MODIFIED BY AN ENGINEERING REPORT BASED ON ACTUAL SITE CONDITIONS.
2. CONCRETE SHALL MEET THE FOLLOWING SPECIFIED DESIGN STRENGTH CRITERIA:
 - 2500 PSI FOR BASEMENT FLOOR SLABS ON UNDISTURBED SOIL
 - 3000 PSI FOR FOOTINGS AND FOUNDATION WALLS
 - 3500 PSI FOR GARAGE FLOOR SLABS
3. FOOTINGS SHALL EXTEND BELOW THE FROST LINE; MINIMUM DEPTH 36 INCHES BELOW GRADE.
4. UNLESS OTHERWISE NOTED ON THE PLANS OR IF SITE CONDITIONS REQUIRE OTHERWISE, FOOTINGS SHALL BE A MINIMUM OF 16" WIDE AND 8" DEEP WITH (2) #4 BARS CONTINUOUS.
5. COLUMN PADS SHALL BE A MINIMUM 30"x30"x12" WITH (4) #4 BARS EACH WAY AND 2" MINIMUM COVER.
6. UNLESS NOTED OTHERWISE ON THE PLANS, FOUNDATION WALLS SHALL BE MINIMUM 8" THICK X 8'-0" (OR 9'-0") TALL AND REINFORCED PER DETAIL 1-52.0 (AND 2-52.0 WHERE APPLICABLE). FOUNDATION WALLS GREATER THAN 10'-0" TALL REQUIRE A SEPARATE ENGINEERED DESIGN. PROVIDE A 2'-0" LONG REINFORCING BAR AT THE TOP OF THE WALL TO BE USED FOR ANY STRAIGHT WALL PANELS EXCEEDING 20'-0" IN LENGTH (REF 3-52.0).
7. FOUNDATION WALL SHALL BE MINIMUM GRADE 40 UNLESS NOTED OTHERWISE. REINFORCEMENT SHALL LAP A MINIMUM OF 24" AT ENDS, SPLICES, AND AROUND CORNERS.
8. FOUNDATION WALLS SHALL BE BACKFILLED WITH A CLEAN LEAN CLAY (OR BETTER) LOW VOLUME CHANGE MATERIAL. ON-SITE MATERIAL MAY BE USED IF DEEMED ACCEPTABLE BY THE GEOTECHNICAL ENGINEER OF RECORD.
9. FOUNDATION WALLS WILL NOT ACHIEVE FULL STRENGTH UNTIL THE BASEMENT SLAB AND THE FIRST FLOOR DECK HAVE BEEN PROPERLY PLACED. IF BACKFILLING THE INTERIOR OF THE FOUNDATION WALL WITH GREATER THAN 4" OF GRANULAR FILL OR 24" OF GRANULAR FILL A STRUCTURAL BASEMENT SLAB, OR ALTERNATE ENGINEERED SOLUTION (I.E. ENGINEERED FILL) WILL BE REQUIRED.
10. WHERE JUMPS OR STEPS IN ELEVATION OCCUR FOUNDATION WALLS AND FOOTINGS SHALL BE FORMED CONTINUOUS AND POURED PER DETAIL 4-52.0.
11. CONCRETE FLOOR SLABS SHALL BE A MINIMUM 4" THICK OVER A MINIMUM 4" BASE OF 1/2" OR GREATER CLEAN GRADED ROCK, UNLESS NOTED OTHERWISE OR IF SITE CONDITIONS REQUIRE OTHERWISE.
12. PROVIDE A MIN 6 MIL THICK POLYETHYLENE MOISTURE BARRIER OVER POROUS GRAVEL BASE UNDER BASEMENT FLOOR SLAB PER R405.2. LAP JOINTS MINIMUM 6" (NOT REQUIRED FOR GARAGE SLABS OR DETACHED ACCESSORY BUILDINGS).
13. FOR A STRUCTURAL REINFORCED CONCRETE FLOOR OVER A USABLE AREA, SUCH AS A GARAGE FLOOR LOCATED OVER A STORAGE AREA, SUBMIT SEALED ENGINEERED DETAILS AND CALCULATIONS.
14. GARAGE SLABS AND BASEMENT OVERDIGS SUPPORTED BY FILL, CONSISTING OF MORE THAN 24" OF GRANULAR FILL OR 8" OF CLAY SHALL BE REINFORCED PER DETAILS 1-52.1 AND 6-52.1 RESPECTIVELY WHERE THE LIMITATIONS OF DETAILS 1-52.1 AND 6-52.1 ARE NOT MET. A SEPARATE ENGINEERED DESIGN SHALL BE REQUIRED.
15. BASEMENT FOUNDATION SILL PLATES SHALL BE BOLTED TO THE FOUNDATION WITH A MINIMUM OF 1/2" ANCHOR BOLTS EMBEDDED AT LEAST 7" INTO THE FOUNDATION AND SPACED NOT MORE THAN 3'-0" ON CENTER AND WITHIN 12" OF EACH END PIECE.
16. FOUNDATION WALLS SHALL BE DAMP-PROOFED PER IRC SECTION R406.
17. PROVIDE A MINIMUM 4" PERFORATED DRAIN AROUND USABLE SPACE BELOW GRADE OR OTHER EQUIVALENT MATERIALS PER IRC SECTION 405.1. THE PIPE SHALL BE PLACED ON A MINIMUM OF 2" OF WASHED GRAVEL OR CRUSHED ROCK AND COVERED WITH NOT LESS THAN 6". THE DRAIN SHALL DAYLIGHT TO THE EXTERIOR OF THE FLOOR PAVED OR TERMINATE IN A MINIMUM 24" DIAMETER OR 20" SQUARE SUMP PIT EXTENDING A MINIMUM 24" BELOW THE BOTTOM OF BASEMENT FLOOR.
18. INTERIOR BEARING WALLS AND COLUMNS SHALL BE ISOLATED FROM THE BASEMENT FLOOR SLAB.
19. INTERIOR BEARING WALLS, OTHER THAN THOSE RESTING DIRECTLY ON THE FOOTING, SHALL BE ISOLATED FROM THE FLOOR FRAMING ABOVE.
20. ALL EARTH RETAINING STRUCTURES ON THE SITE GREATER THAN 4'-0" TALL (EXCLUDING CONCRETE FOUNDATION WALLS RESTRAINED AT BOTH TOP AND BOTTOM) SHALL REQUIRE A SEPARATE ENGINEERED DESIGN (I.E. RETAINING WALLS, VINYL WALLS, ETC.).
21. INSULATION SHALL BE INSTALLED FOR ALL BASEMENT WALLS AS REQUIRED PER N1102.2.9.
22. A CONCRETE ENCASED GROUNDING ELECTRODE CONNECTION SHALL BE PROVIDED TO THE ELECTRICAL SERVICES PER 3608.1.
23. ANY GEOTECHNICAL IMPROVEMENT METHODS AND/OR STRUCTURAL SOLUTIONS SUCH AS DRILLED PILES OR PILES EMPLOYED TO ADDRESS UNACCEPTABLE SUBGRADE CONDITIONS SHALL BE SUBMITTED TO EOR AS ENGINEERED SHOP DRAWINGS FOR REVIEW AND APPROVAL.

THESE PLANS HAVE BEEN PREPARED BASED ON A PRESUMPTIVE ALLOWABLE BEARING CAPACITY AS ALLOWED BY IRC CODE AND THE LOCAL ENFORCING JURISDICTION.

APEX ENGINEERS, INC. (APEX) RECOMMENDS THAT ALL FOOTING EXCAVATION BE EVALUATED BY A LICENSED GEOTECHNICAL ENGINEER PRIOR TO THE PLACEMENT OF ANY FOUNDATION ELEMENTS. GEOTECHNICAL INVESTIGATION AND/OR TESTING IS NOT A SERVICE PROVIDED OR OFFERED BY APEX.

APEX HAS NOT BEEN RETAINED TO DETERMINE THE EXPANSIVE SOIL CHARACTERISTICS OF THE SUBGRADE SOIL AND THEREFORE CANNOT BE HELD RESPONSIBLE FOR THE VOLUMETRIC CHANGES OF THE SOIL (INCLUDING BELOW THE BASEMENT SLAB). BY USE OF THESE PLANS WITHOUT AN ACCOMPANYING GEOTECHNICAL ENGINEERING REPORT, APEX SHALL NOT BE HELD LIABLE FOR ANY FUTURE MOVEMENT AND/OR DIFFERENTIAL MOVEMENT OF THE PROPOSED STRUCTURE AND THE POSSIBLE DAMAGE THAT MAY BE CAUSED AS A RESULT OF SUCH MOVEMENT. DAMAGE FROM EXPANSIVE SOILS AND/OR SETTLEMENT CAN RESULT IN AMONGST OTHER THINGS, THE FOLLOWING: BASEMENT SLAB HEAVE, SHEETROCK CRACKS, WINDOWS AND DOOR BECOMING OUT OF PLUMB AND STICKING AND/OR NOT OPENING, DAMAGE TO TILE, MOULDING, AND OTHER COSMETIC FINISHES.



--	--

PROJECT:
Highland Meadows Lot 136
2763 S.W. 12th Terr.
Lee's Summit, Missouri

CLIENT:
New Mark Homes

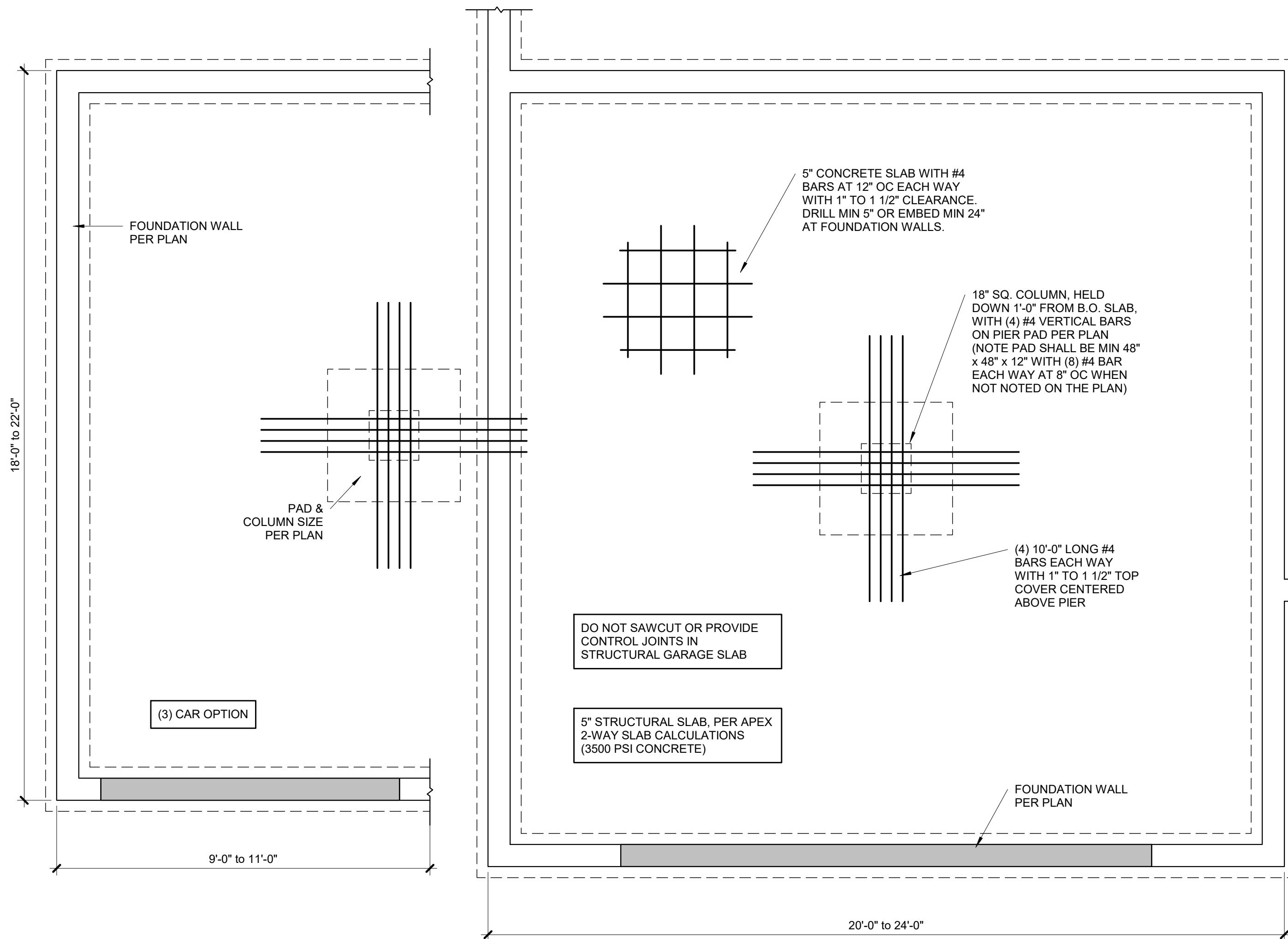
PROJECT #:	23-0407
DRAWN BY:	TDA
CHECKED BY:	BDC
SUBMITTAL DATE:	2023.04.12

[illegible]

SHEET:

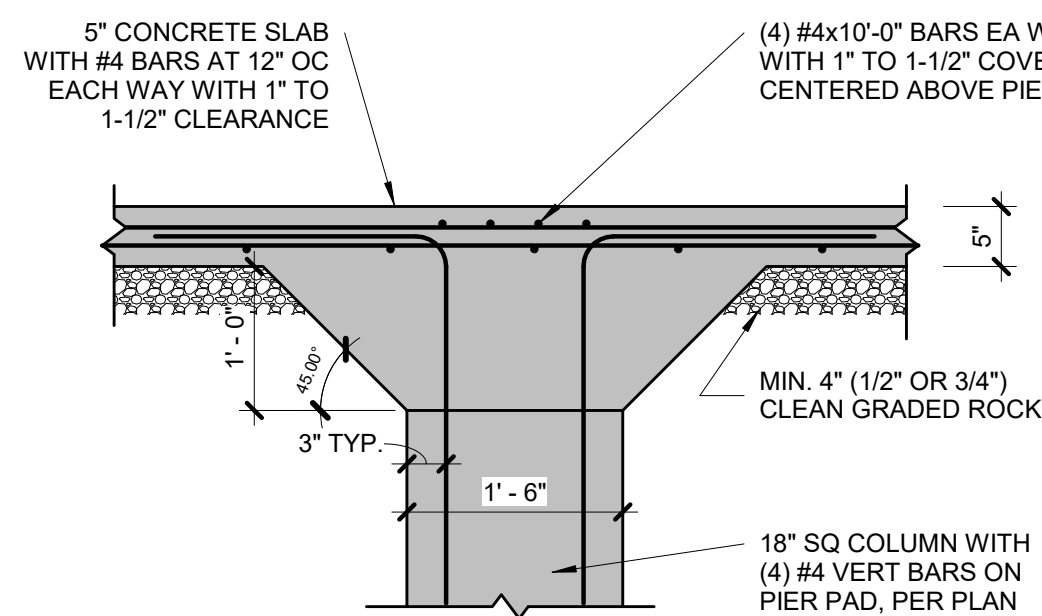
GENERAL NOTES

S1.0



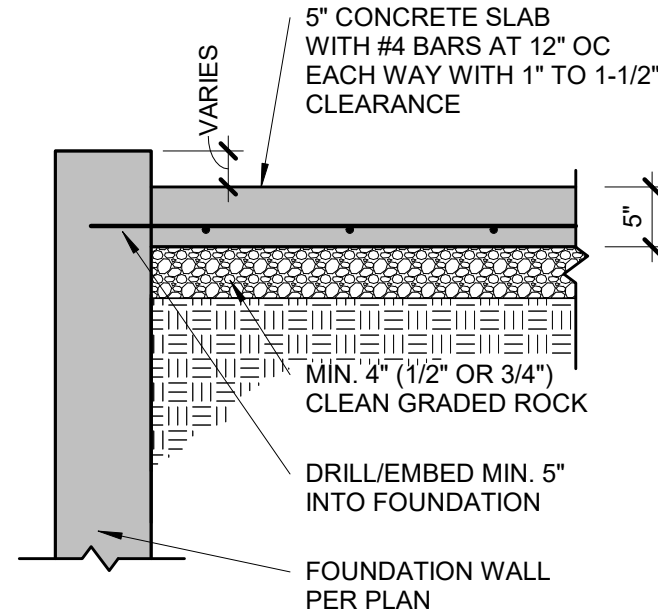
1 TYPICAL STRUCTURAL GARAGE SLAB PLAN

S2.1 3/8" = 1'-0"



2 STRUCTURAL GARAGE SLAB PIER PAD DETAIL

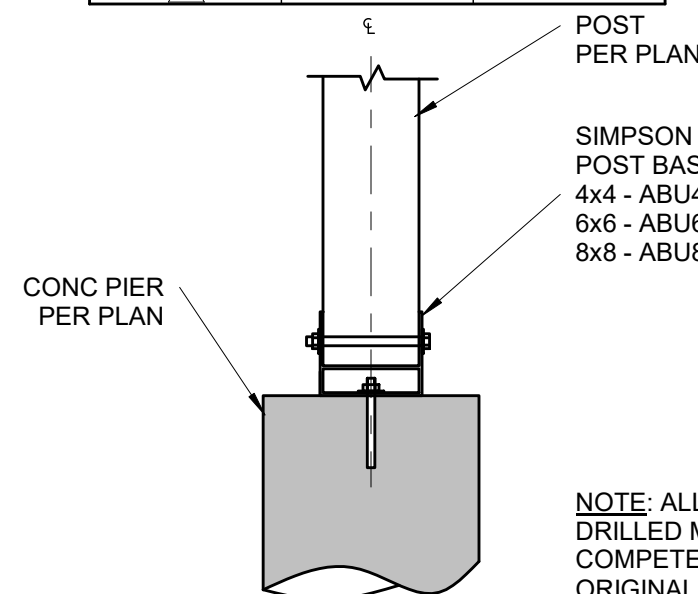
S2.1 3/4" = 1'-0"



3 STRUCTURAL GARAGE SLAB/WALL SECTION

S2.1 3/4" = 1'-0"

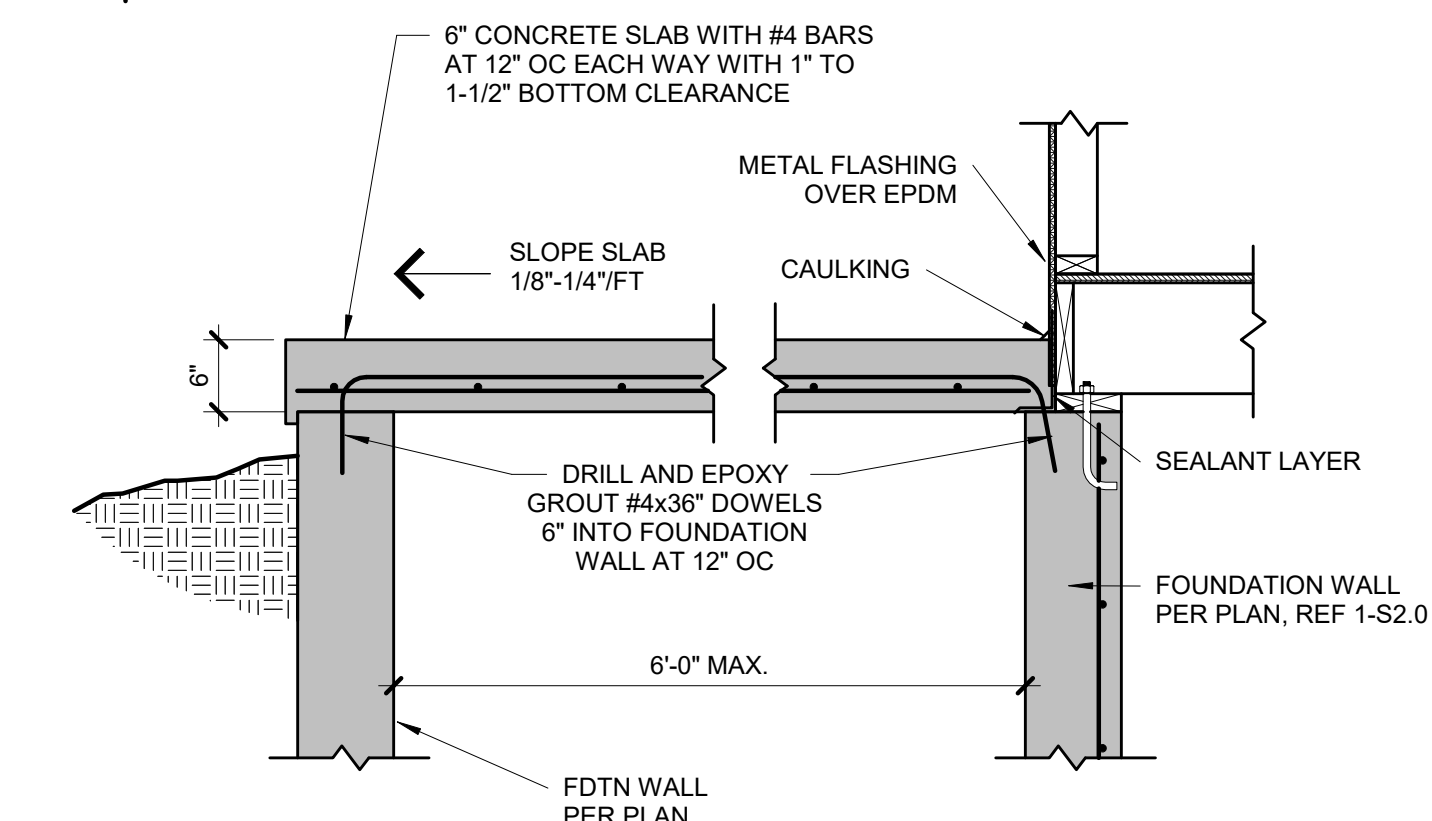
PIER SCHEDULE		
COLUMN MARK	COL SIZE	PIER DIAMETER
G	PER PLAN	12"
H	PER PLAN	16"
J	PER PLAN	18"
K	PER PLAN	24"
L	PER PLAN	28"



NOTE: ALL CONC. PIERS SHALL BE DRILLED MIN 36" DEEP TO COMPETENT ORIGINAL SOIL WITH MIN 2,000 PSF BEARING CAPACITY (TYP UNO)

8 POST BASE DETAIL

S2.1 3/4" = 1'-0"

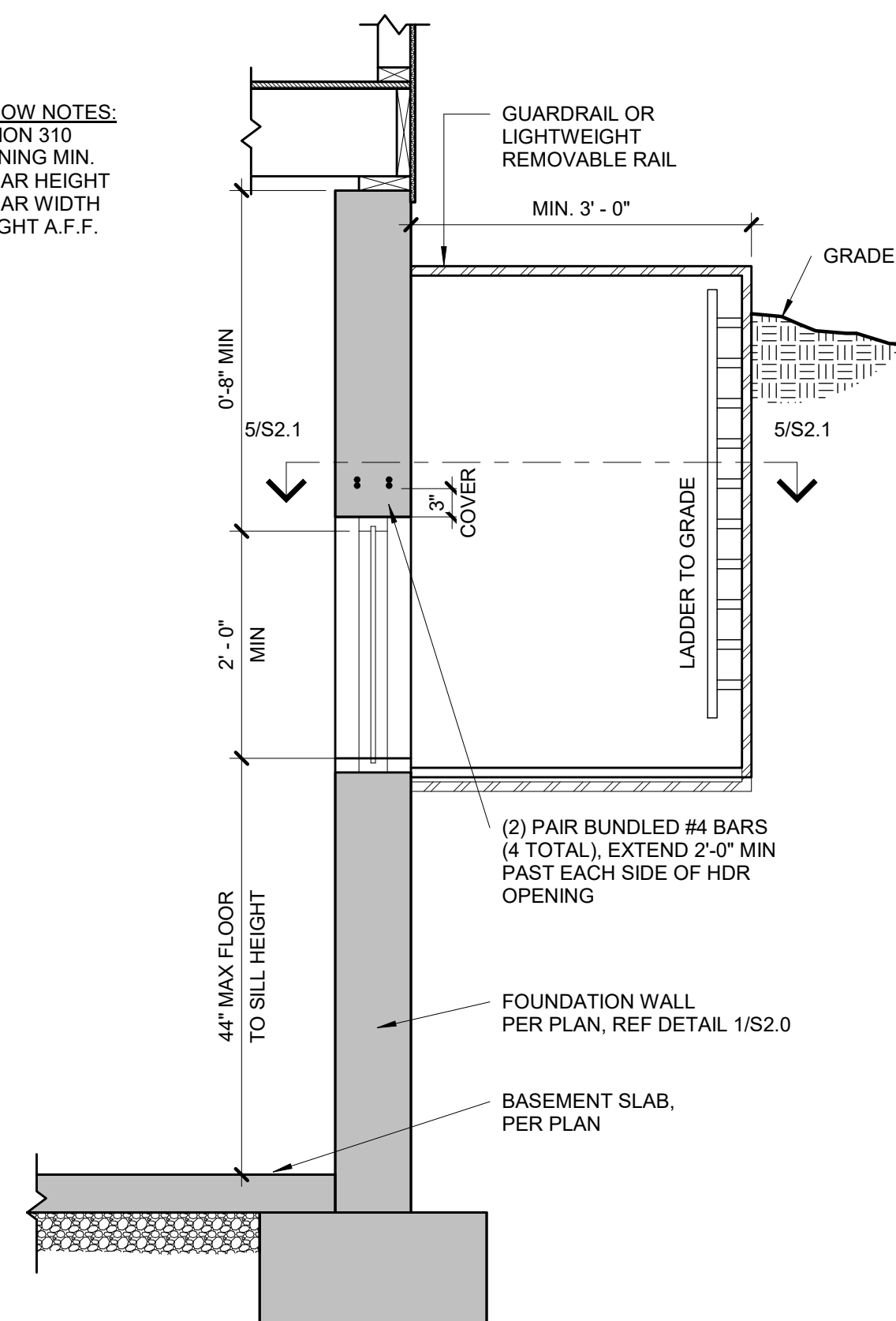


FORMWORK OPTIONS:
1. PROVIDE VULCRAFT 2VLI (OR EQUAL) CORRUGATED DECKING (SHORE AT MID-SPAN DURING CONSTRUCTION).
OR
2. PLYWOOD FORMS WITH EXPANDABLE BAR JOISTS OR TEMPORARY FRAMED WALLS BY CONTRACTOR.

7 SUSPENDED PORCH STOOP DETAIL

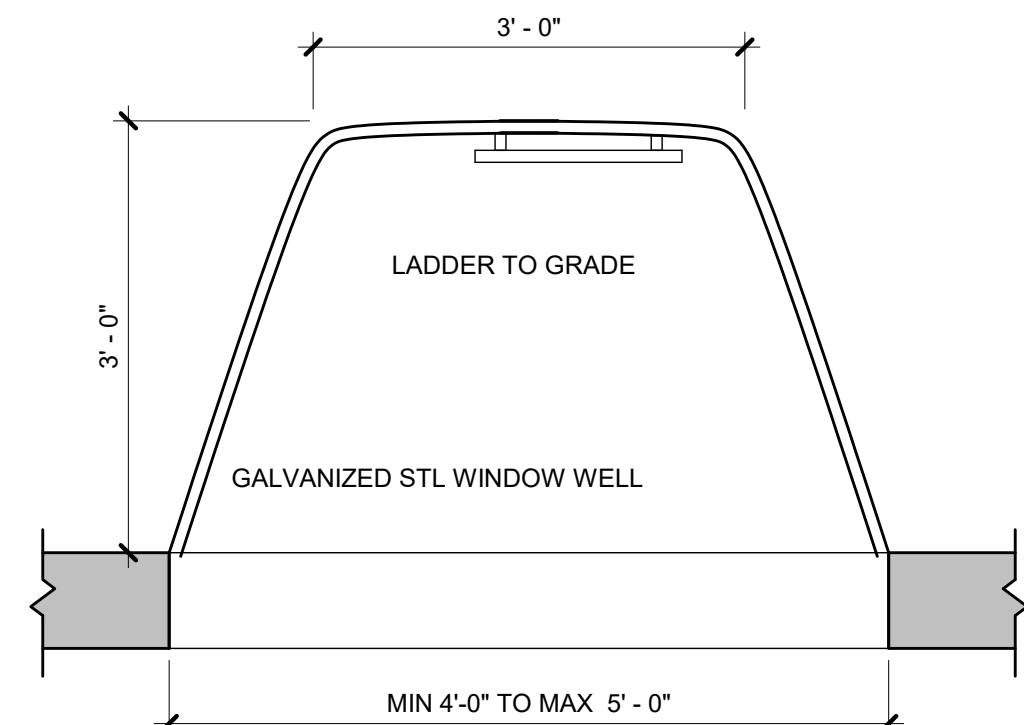
S2.1 3/4" = 1'-0"

EGRESS WINDOW NOTES:
PER IRC SECTION 310
1. 5.7 S.F. OPENING MIN.
2. 24" MIN. CLEAR HEIGHT
3. 20" MIN. CLEAR WIDTH
4. 44" MAX HEIGHT A.F.F.



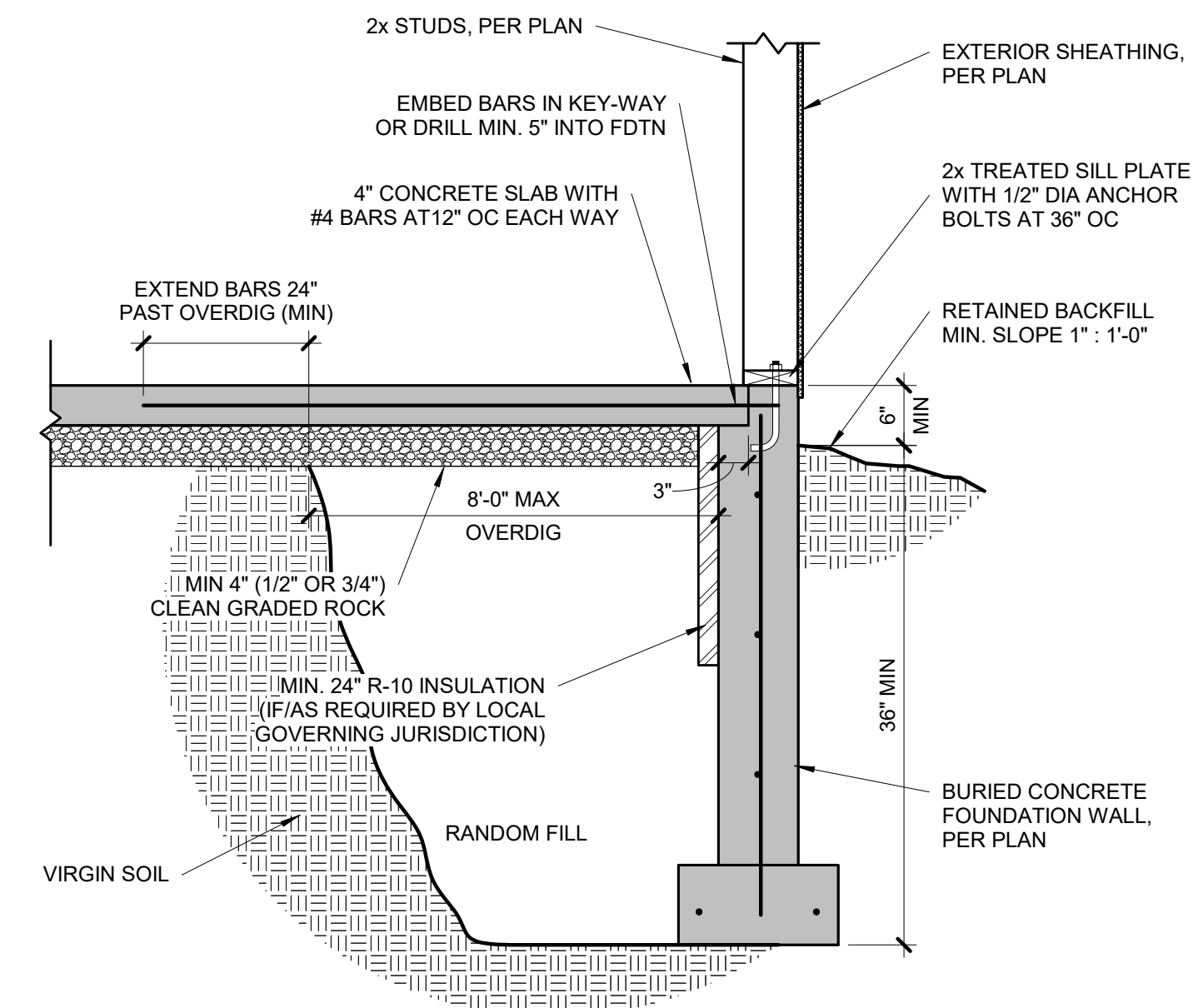
4 TYPICAL EGRESS WINDOW SECTION DETAIL

S2.1 3/4" = 1'-0"



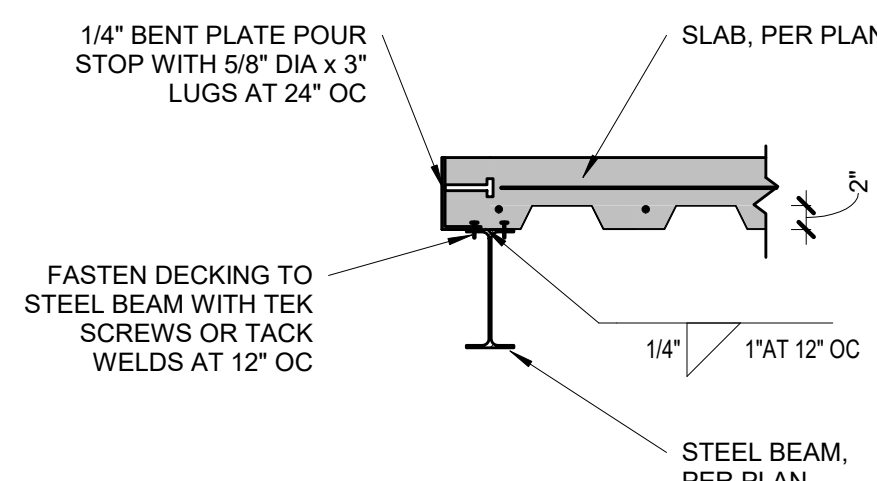
5 TYPICAL EGRESS WINDOW PLAN

S2.1 3/4" = 1'-0"



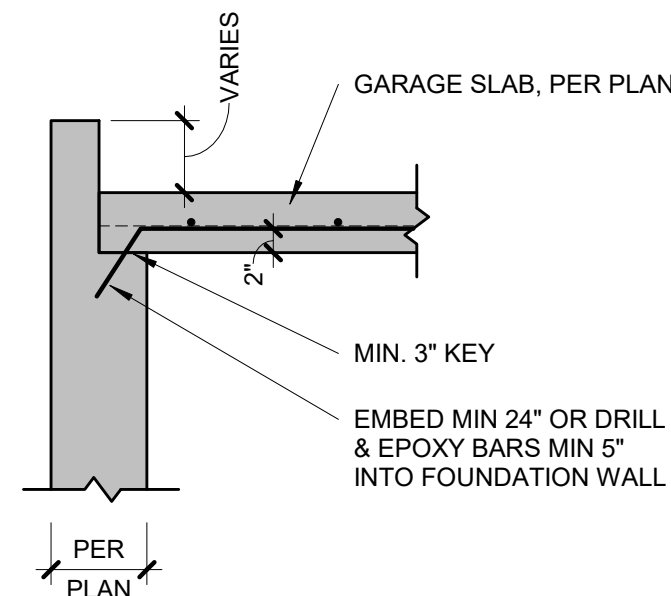
6 TYPICAL OVERDIG DETAIL AT BASEMENT SLAB

S2.1 3/4" = 1'-0"



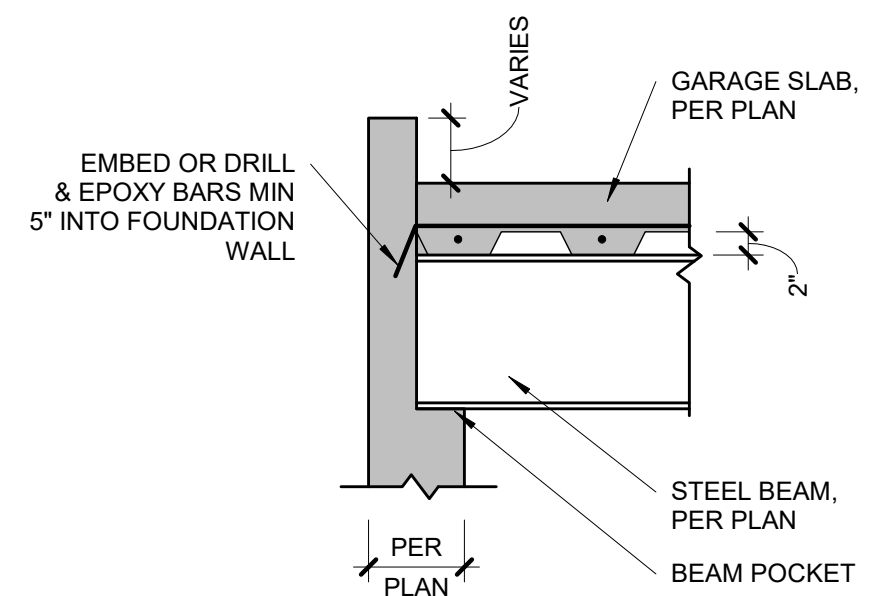
9 POUR STOP DETAIL

S2.1 3/4" = 1'-0"



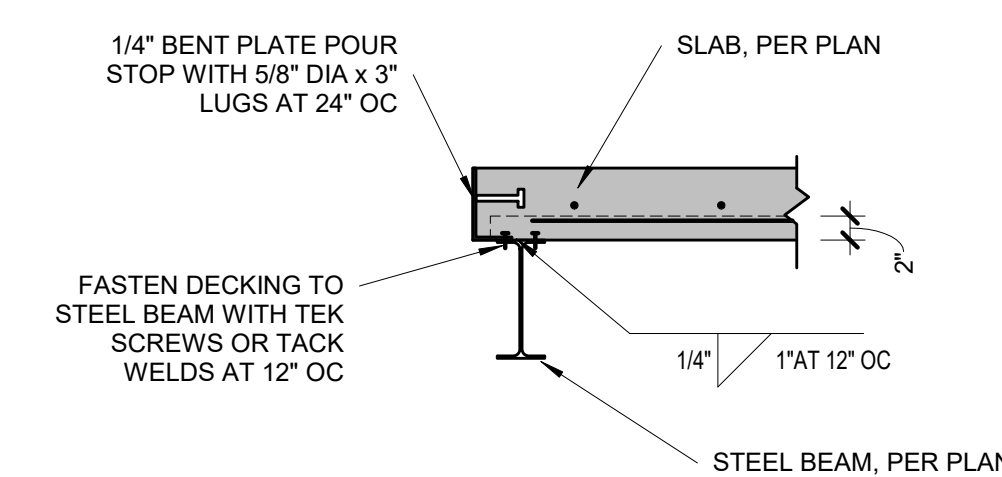
10 GARAGE SLAB BEARING

S2.1 3/4" = 1'-0"



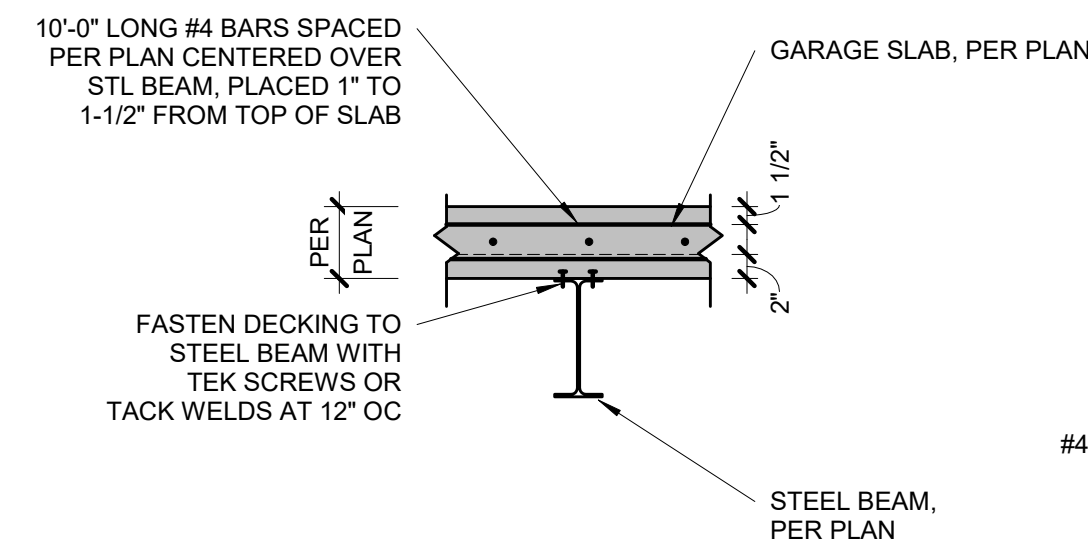
11 GARAGE SLAB BEAM BEARING

S2.1 3/4" = 1'-0"



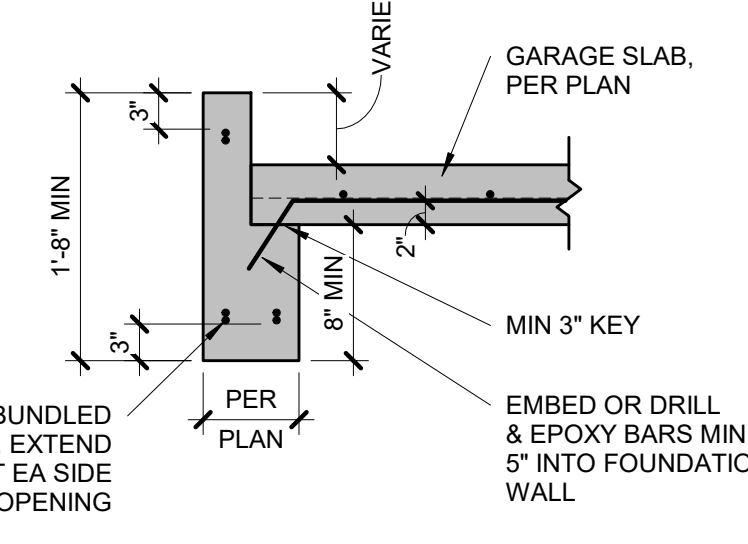
12 POUR STOP DETAIL

S2.1 3/4" = 1'-0"



13 GARAGE SLAB BEAM BEARING

S2.1 3/4" = 1'-0"



14 CONCRETE HEADER DETAIL

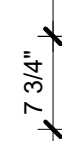
S2.1 3/4" = 1'-0"

TYPICAL SUSPENDED SLAB DETAIL

STEEL DECKING NOTES:
• MINIMUM 1-1/2" BEARING
• FASTEN TO SUPPORT STEEL WITH 5/8" VISIBLE PUDDLE WELDS AT EDGE RIBS AND 12" CENTERS ALONG END BEARING
• FASTEN SIDE LAPS AND PERIMETER EDGES AT 36" CENTERS WITH #10 TEK SCREWS OR 5/8" PUDDLE WELDS
• MAX UNSUPPORTED CONSTRUCTION SPAN 6'-0", UNO ON PLANS BY APEX



S3.0	$3/4" = 1'-0"$
-------------	----------------

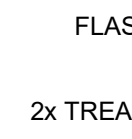


S3.0	$3/4" = 1'-0"$
-------------	----------------

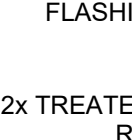
9 | CONNECTION



S3.0	1 1/2" = 1'-0"
-------------	----------------



3.0	$3/4" = 1'-0"$
------------	----------------



DECK JOIST SPAN	1/2" DIA LAG SPACING	EQUIVALENT SPACING
-----------------	----------------------	--------------------

NOTE:
CHART IS APPLICABLE ONLY WHEN DECK IS SHOWN ON APPROVED PLAN

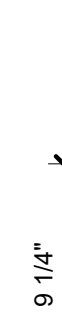
3.0	$3/4" = 1'-0"$
------------	----------------

2x8*	5 1/2" MIN
2x10	6 1/2" MIN

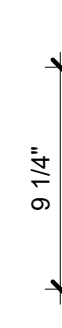
STAGGER
FASTENERS



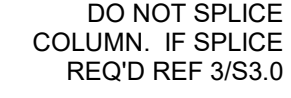
63.0	3/4" = 1'-0"
------	--------------



3.0	1 1/2" = 1'-0"
------------	----------------

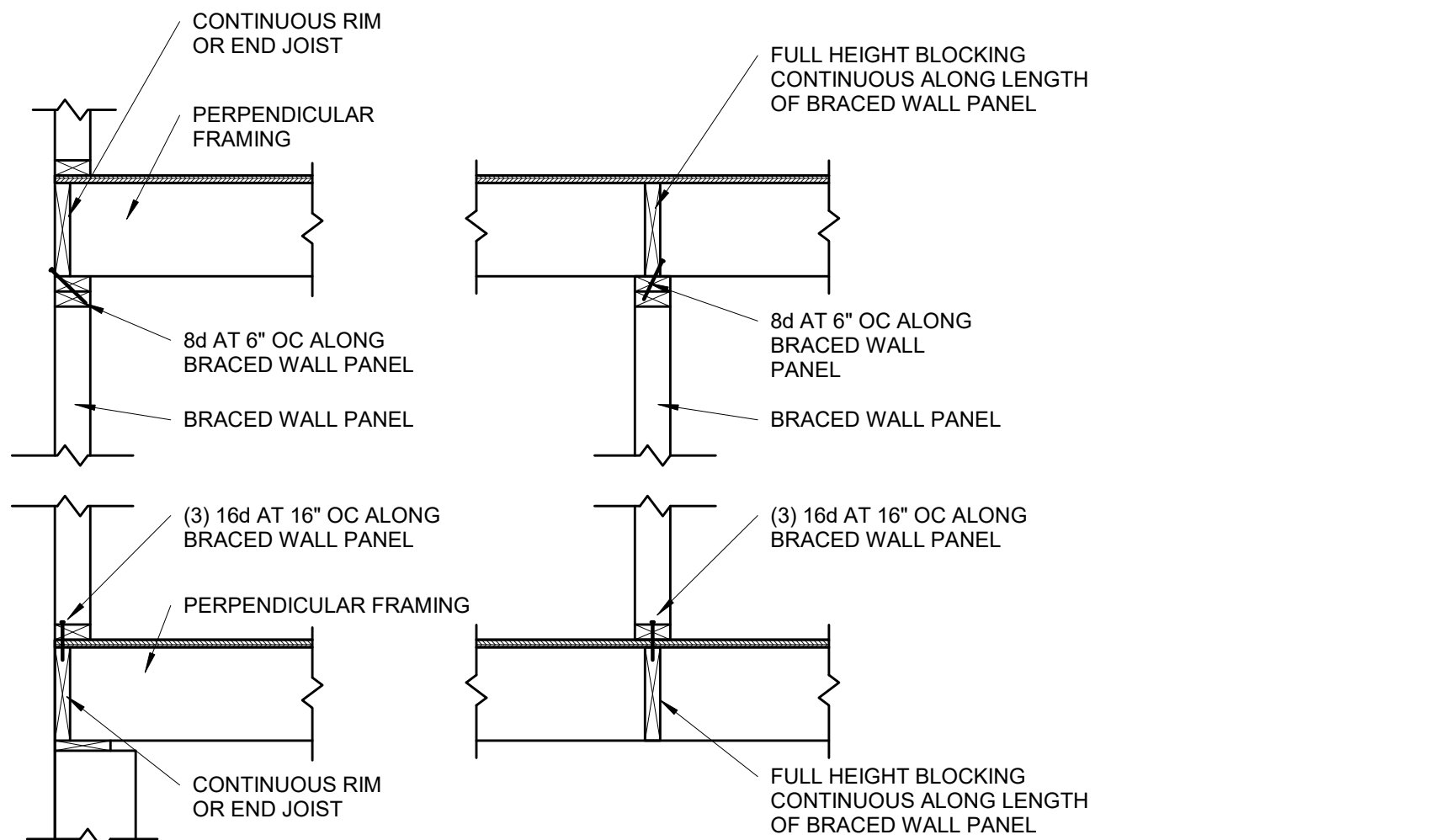


3.0	1 1/2" = 1'-0"
------------	----------------



3.0	1 1/2" = 1'-0"
------------	----------------

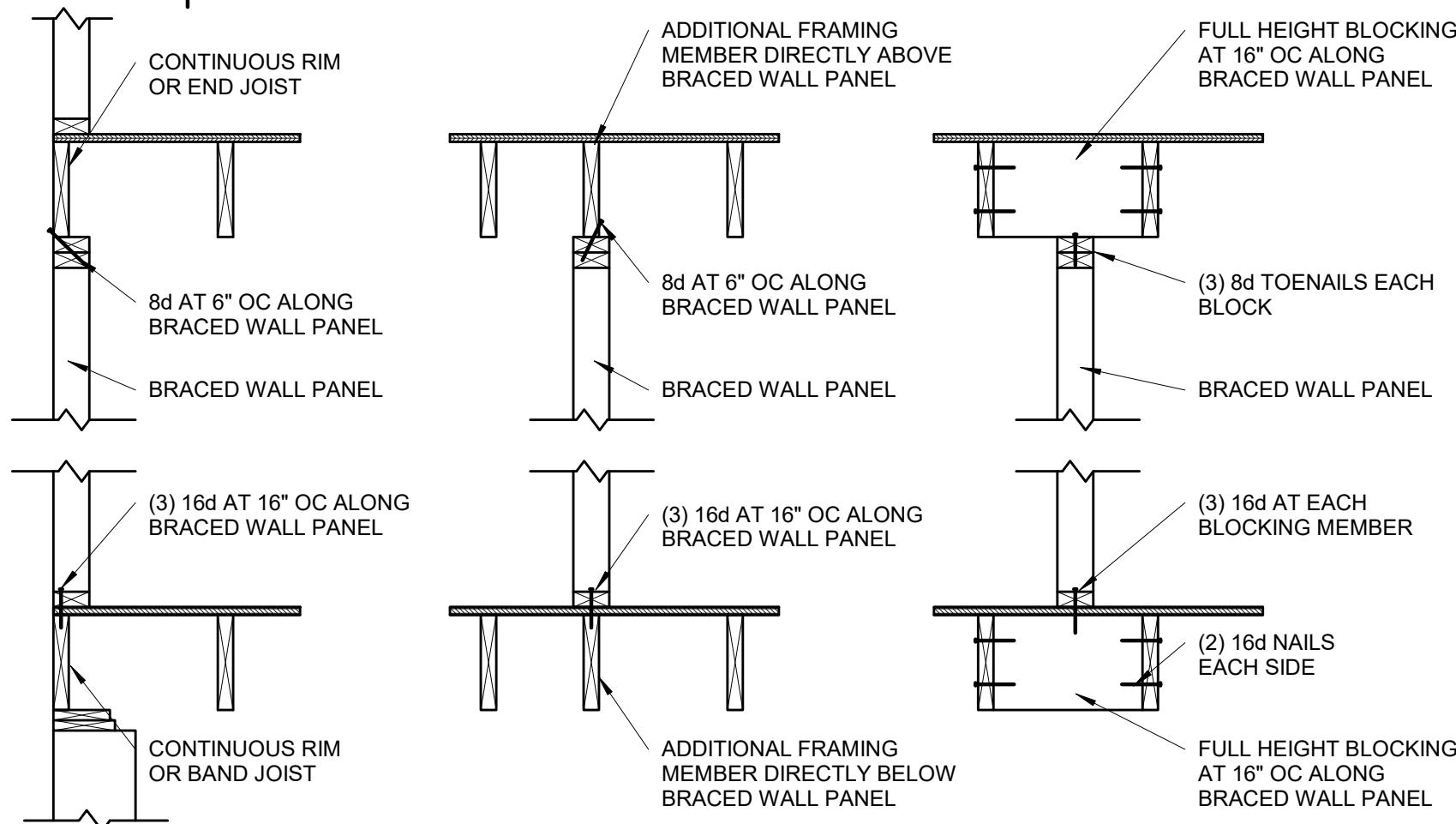
3.0	3/4" = 1'-0"
------------	--------------



**BRACED WALL PANEL
CONNECTION WHEN
PERPENDICULAR
TO FLOOR/CEILING FRAMING**

S4.1

3/4" = 1'-0"



**BRACED WALL PANEL
CONNECTION WHEN PARALLEL
TO FLOOR/CEILING FRAMING**

S4.1

3/4" = 1'-0"

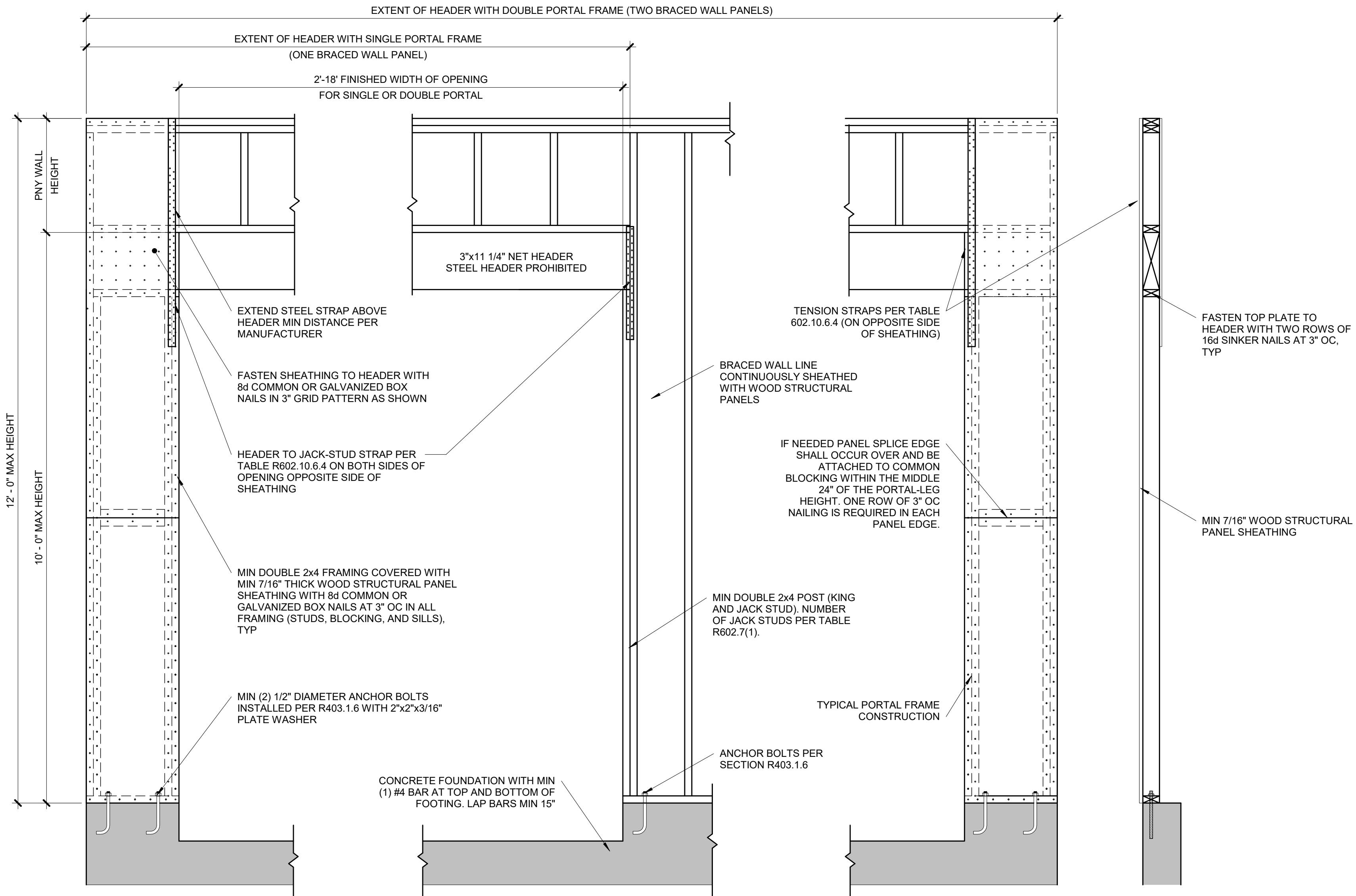
CONT. SHEATHED BRACED WALL END CONDITIONS

END CONDITION 1	END CONDITION 2
END CONDITION 3	END CONDITION 4
END CONDITION 5	REQUIREMENTS
	<p>RETURN PANEL: 24" FOR BRACED WALL LINE SHEATHED WITH WOOD STRUCTURAL PANELS. 32" FOR BRACED WALL LINES SHEATHED WITH STRUCTURAL FIBERBOARD.</p> <p>DISTANCE D: 24" FOR BRACED WALL LINES SHEATHED WITH WOOD STRUCTURAL PANELS. 32" FOR BRACED WALL LINES SHEATHED WITH STRUCTURAL FIBERBOARD.</p> <p>HOLD-DOWN DEVICE: 800 LBS CAPACITY FASTENED TO THE EDGE OF THE BRACED WALL PANEL CLOSEST TO THE CORNER AND TO THE FOUNDATION OR FLOOR FRAMING BELOW</p>

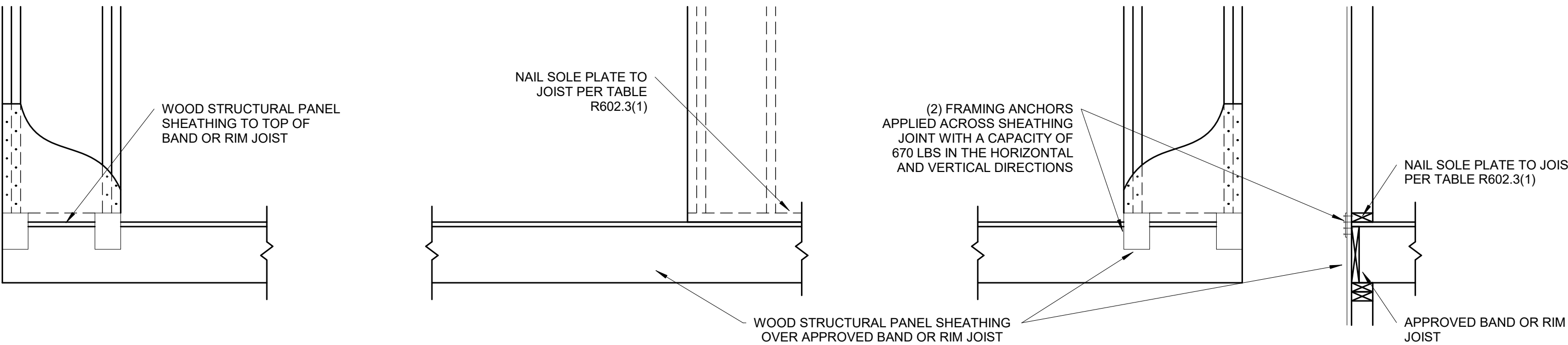
**CONTINUOUS SHEATHED BRACED
WALL END CONDITIONS**

S4.1

NOT TO SCALE (COMPLIANCE WITH IRC R602.10.7)

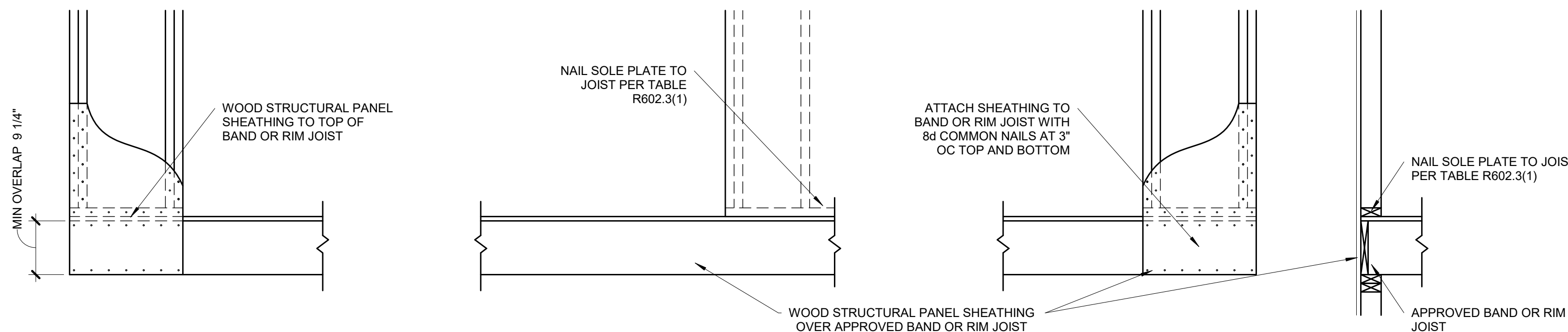


OVER CONCRETE OR MASONRY BLOCK FOUNDATION



OVER RAISE WOOD FLOOR - FRAMING ANCHOR OPTION

(WHEN PORTAL SHEATHING DOES NOT LAP OVER BAND OR RIM JOIST)



OVER RAISE WOOD FLOOR - OVERLAP OPTION

(WHEN PORTAL SHEATHING LAPS OVER BAND OR RIMBOARD)

**BRACED WALL PANEL-IRC
METHOD CS-PF CONTINUOUSLY
SHEATHED PORTAL FRAME
PANEL CONSTRUCTION**

S4.1

3/4" = 1'-0"

(PER IRC R602.10.6.4)