

THIS PROJECT PLACES 450' OF 58Q2MT-024 FROM EXISTING HH TO BUILDING AND NEW H. PLACE NEW TERM IN ROW TO FEED MULTI TENANT BUILDING

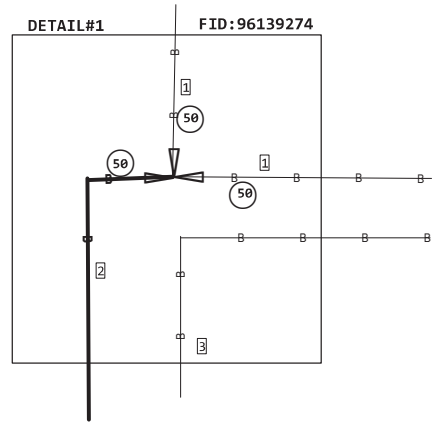
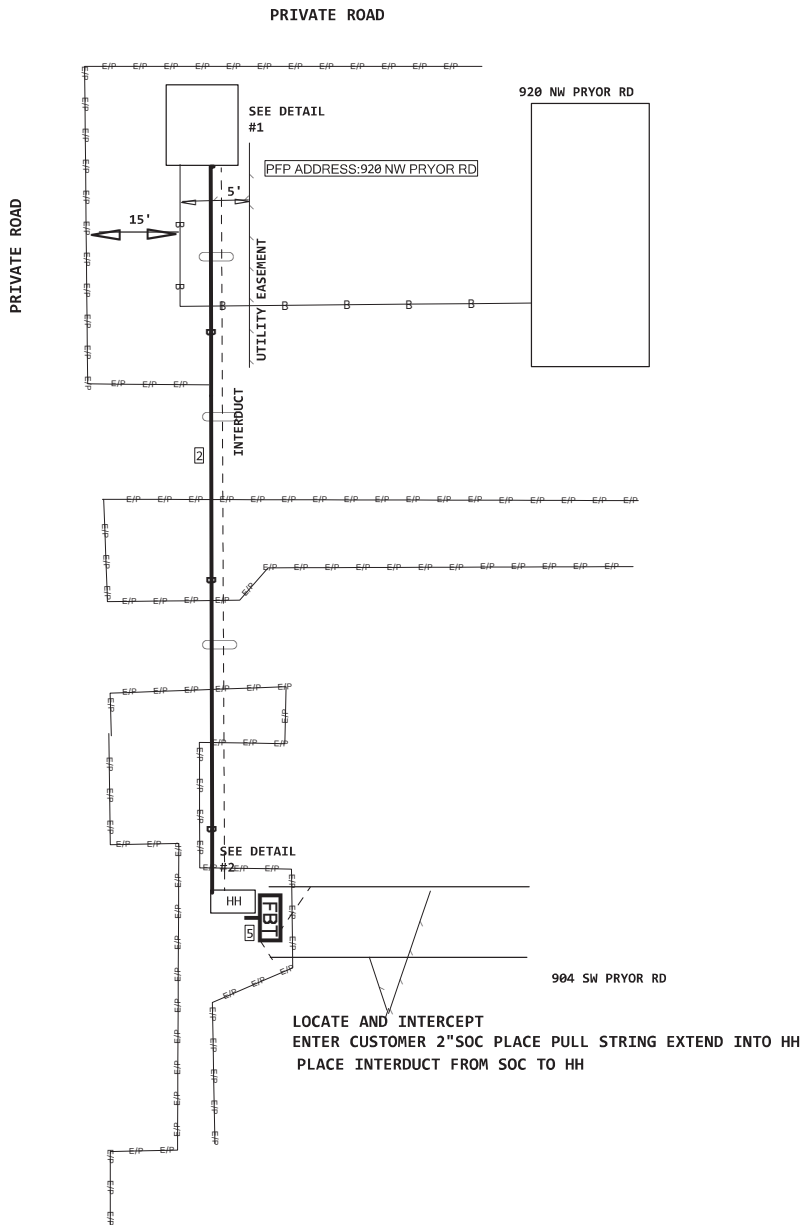
904 NW PRYOR RD

845C
1 READY FOR SERVICE TRIGGER

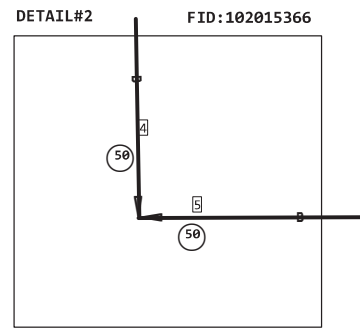


PROJECT # A02KDNX		DATE SVC REQ'D 04/20/2023
NPANNX 816524	GEO LOC EE4160	CLLI KSCYMO41
PRIMARY ENGR.: SEWING, DANIEL A		
ENGR. ID: DS6080	PERMIT REQ'D.	N
PHONE #: 8168966149	PRINT 1	OF 2

- 1 845C
INNERDUCT 1.2"
380 SVA ONLY - BORE ? INCLUDE
380 EXEMPT MATERIAL ONLY
- 2 845C
5BQ2MT-024
450 MATERIAL ONLY
450 SVA ONLY - PLACE ITEM IN
845C
- 4 845C
HH-3X2X3
1 EXEMPT MATERIAL ONLY
1 SVA ONLY - PLACE/REPLACE
- 11 845C
5 SVA ONLY - LOCATE EXPOSE
- 12 845C
5 SVA ONLY - LOCATE EXPOSE
- 5 845C
EVOLV6/25RAW
1 EXEMPT MATERIAL ONLY
1 PLACE FLEXNAP TERMINAL I
- 13 845C
HH-13X19X12
1 SVA ONLY - PLACE PEDESTAL
1 EXEMPT MATERIAL ONLY
- 6 845C
12 SPLICE FIBER NEW STRANDED
- 3 845C
2 SPLICE FIBER NEW RIBBON Z
- 10 845C @ PFP
6 TESTING FIBER FACILITIES
- 9 845C @ FBT
6 TESTING FIBER FACILITIES



- 1 (2021) 845C 189'
5BQ2MR-864
PON920P, 25-420
A, 397-864
- 2 (PPA) 845C 446'
5BQ2MT-012
OUT PON920P, 421-432
- 3 (2020) 845C 0'
5BQ2MT-024
PON920P, 1-24



- 4 (PPA) 845C 446'
5BQ2MT-012
OUT PON920P, 421-432
- 5 KSCYM041
R 904-1 NW PRYOR RD
EVOLV6/25RAW (PPA) 845C
OUT PON920P, 421-426

KSCYM041
R904
HH-3X2X3 (PPA) 4C
36 X 24 X 36 = 31104

PROJECT # A02KDNX		DATE SVC REQ'D 04/20/2023
NPANNX 816524	GEO LOC EE4160	CLLI KSCYM041
PRIMARY ENGR.: SEWING, DANIEL A		
ENGR. ID: DS6080	PERMIT REQ'D.	N
PHONE #: 8168966149	PRINT 2	OF 2