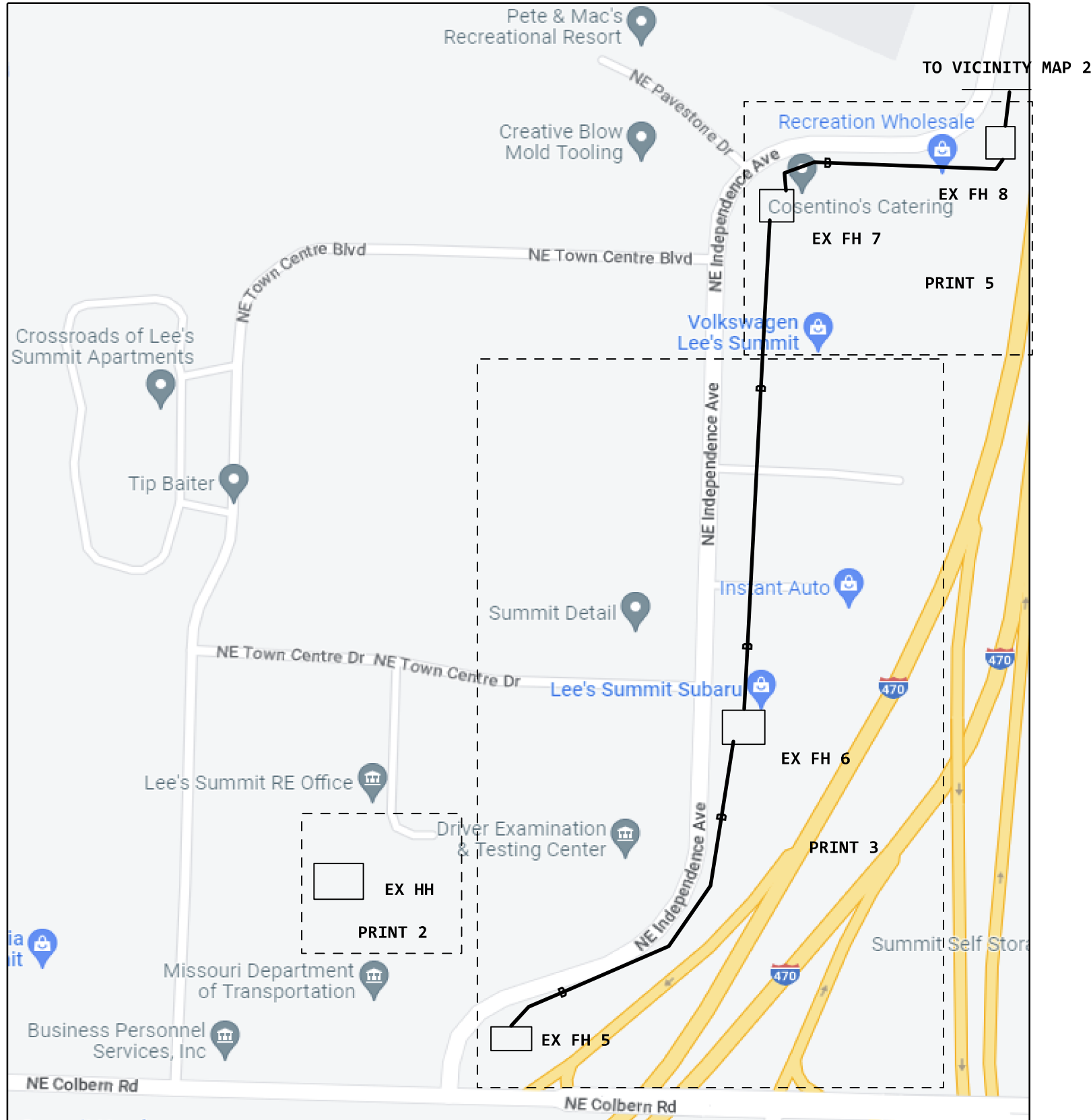
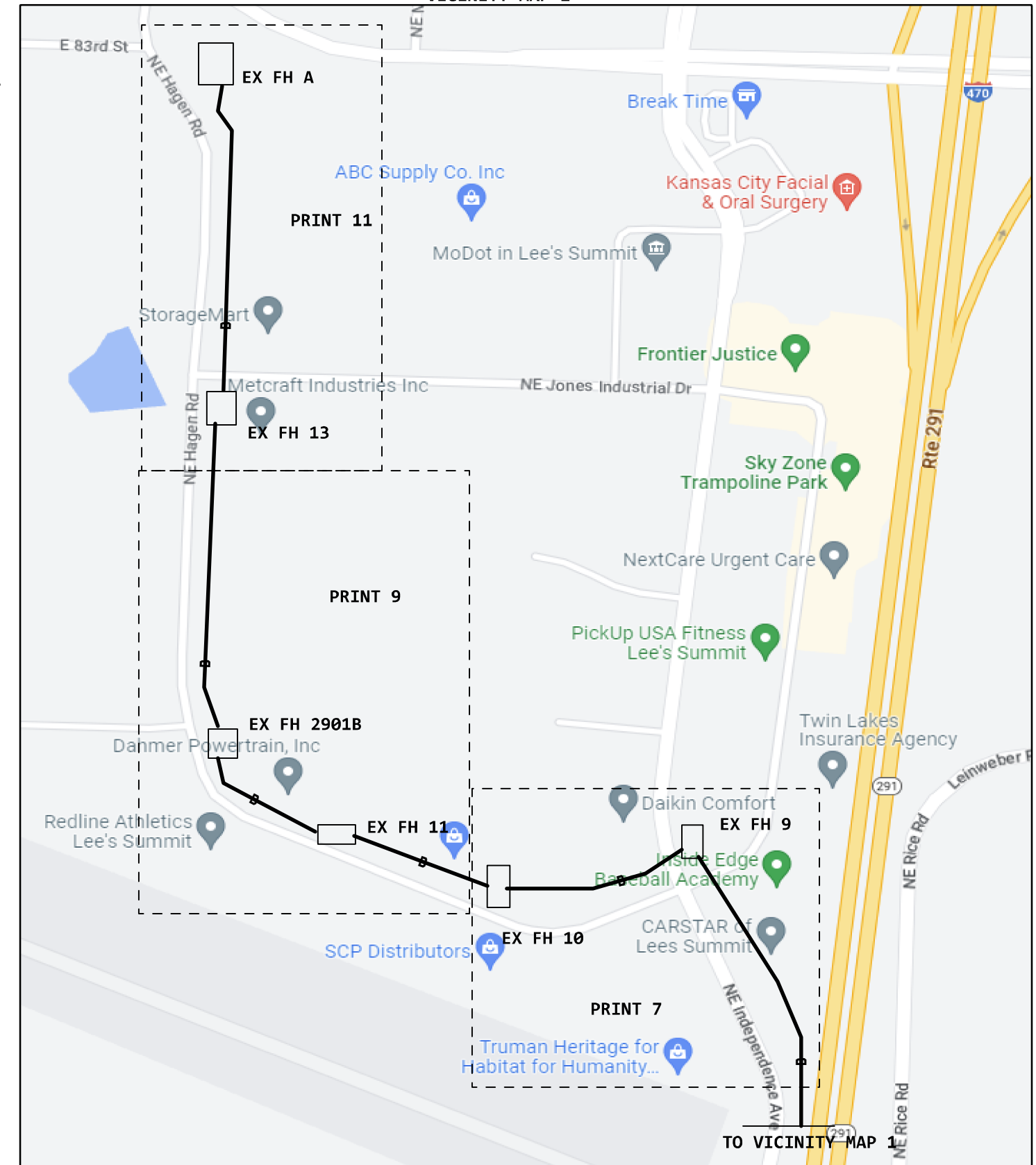


VICINITY MAP 1



VICINITY MAP 2



845C
 1 READY FOR SERVICE TRIGGER
 ECD: 07/31/2023

NPANNX: 816524
 WC: LEES SUMMIT

BEFORE YOU DIG!
 2 DAYS PRIOR CALL 811

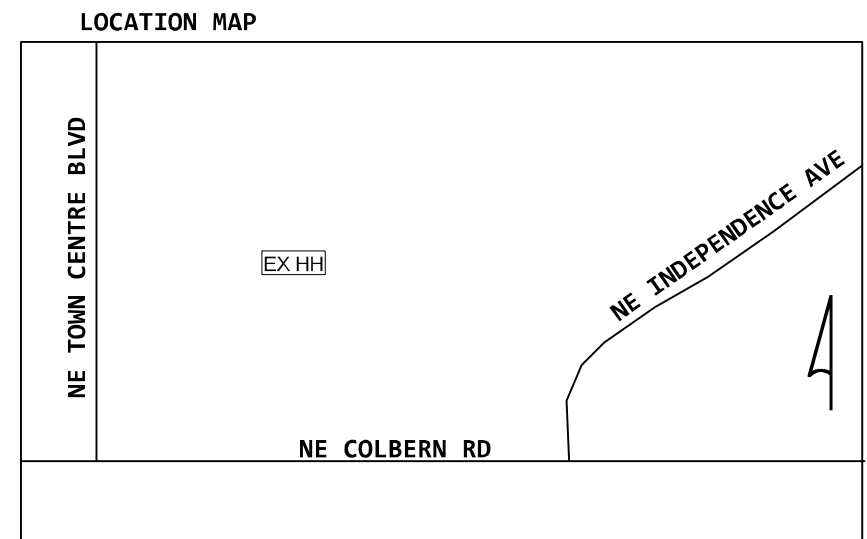
NOTE: PLEASE WORK AFTER OR IN CONJUNCTION WITH JOB A02F2ZF

BURY/BORE ALL CABLE AT 36" DEPTH UNLESS OTHER SPECIFIED

PLEASE CONTACT DARRIN WELCH AT 805-290-3087 OR DARRIN.WELCH@PEARCE-SERVICES.COM FOR ANY QUESTION OR ISSUE REGARDING THIS PROJECT

PROJECT # A02J85Q		DATE SVC REQ'D 07/31/2023
NPANNX 816524	GEO LOC EE4160	CLLI KSCYMO41
PRIMARY ENGR.: PEDERSEN, CHARLES M		
ENGR. ID: CP861N	PERMIT REQ'D.	N
PHONE #: 8168133667	PRINT 1 OF 12	

1 (PPA) 845C 100' TAIL 500FBR,145-288	3 (PPA) 845C 855' 5BQ2MT-144 L2012,289-290 NC G,3-12 NC (G,13-84) <A02G478> 500FBR,217-288 NC (G,85-96) NC (G,97-112) NC G,113-144 NC	NC NC NC NC NC	NC NC NC NC NC
---	--	----------------------------	----------------------------



4 (2014) 845C 1403'
5BQ2MT-144
L2012,297-300
500FBR,5-48
500FBR,73-76
<A01Z3V0> 500FBR,77-80
C,57-72
C,73-74
C,75-76
L2012,293-296
<A01WXC9> 500FBR,107-110
C,85-114
500FBR,115-116
C,117-118
500FBR,119-120
C,121-144

8 (1996) 85C 100'
3492BT-012
FE02,9-12
A,5-6
A,7-8
A,9-12

9 (2014) 845C 60'
5BQ2MT-048
<A01WXC9> A,1-2
A,3-6
A,7-8
500FBR,117-118
A,11-16
500FBR,125-134
A,27-48

5 (2011) 845C 530'
5BQ2MT-024
500FBR,133-134
A,3-6
L2008,53-54
500FBR,117-118
A,11-12
A,13-16
500FBR,125-132

10 (2008) 85C 100'
5BQ2MT24-100LP
B,1-4
L2008,51-52
B,7-24

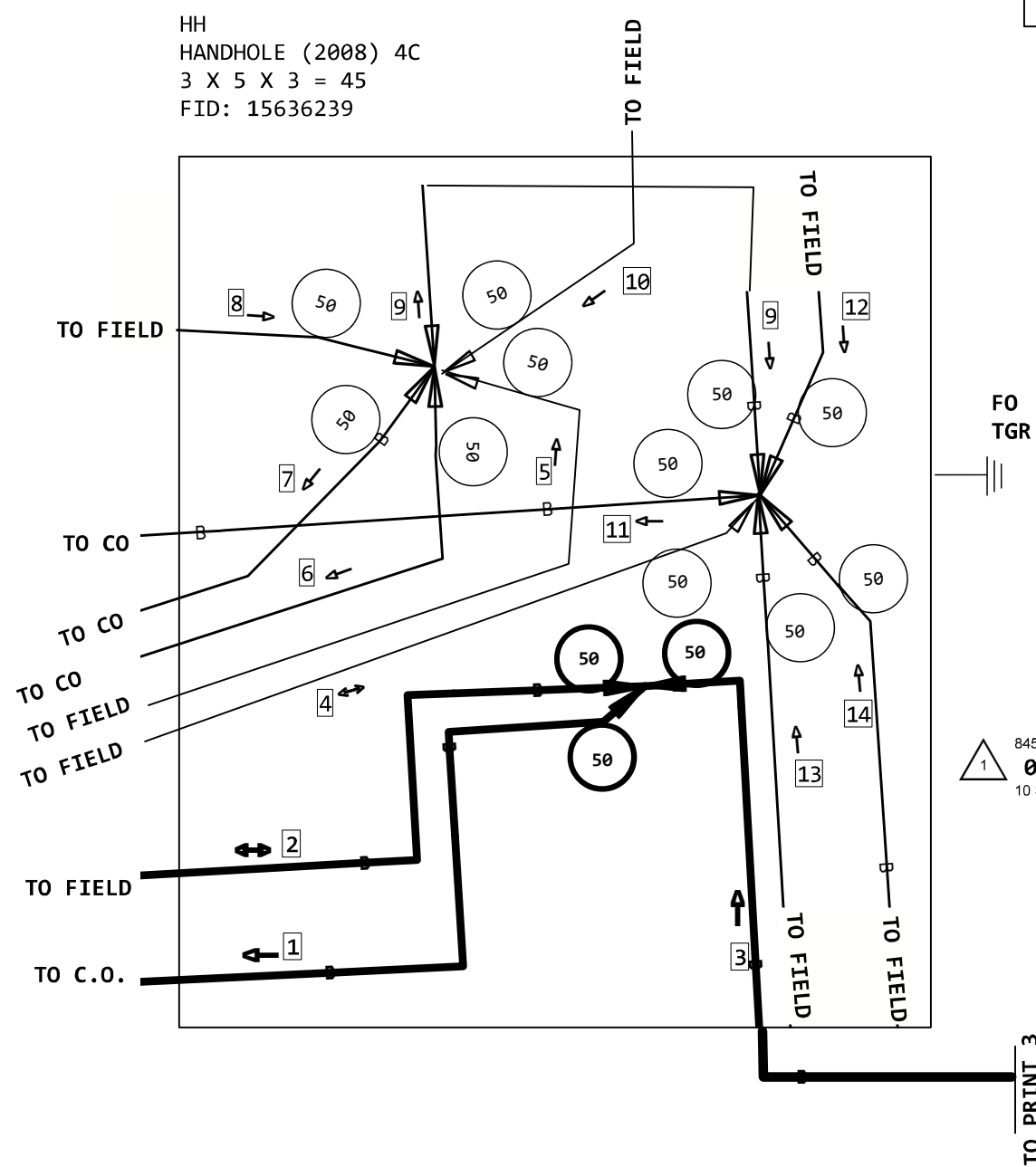
6 (1996) 85C 1026'
3492BT-012
FE02,9-12
L2008,51-54
A,9-12

11 (2015) 845C 150'
5BQ2MT-144
L2012,297-300
500FBR,5-136
L2012,293-296
500FBR,141-144

7 (2012) 845C
5BQ2MT-024
D,1-2
B,3-4
L,137-144
A,1-2
A,3-6
A,19-24

12 (2016) 845C 1275'
5BQ2MT-024
L2012,73-76
B,5-6
<A01PKLT> 500FBR,103-106
B,11-24

13 (2016) 845C 643'
5BQ2MT-144
500FBR,85-94
A,11-12
<A01L9D2> 500FBR,97-102
A,19-144



14 (2015) 845C 608'
5BQ2MT-072
500FBR,49-76
<A01Z3V0> B,29-32
500FBR,81-84
B,37-38
500FBR,135-136
B,41-44
500FBR,141-142
B,47-48
500FBR,121-132
500FBR,111-114
B,65-72

UNRELATED CABLES
OMITTED FOR
PRINT CLARITY

PROJECT # A02J85Q		DATE SVC REQ'D 07/31/2023
NPANNX 816524	GEO LOC EE4160	CLLI KSCYMO41
PRIMARY ENGR.: PEDERSEN, CHARLES M		
ENGR. ID: CP861N	PERMIT REQ'D.	Y
PHONE #: 8168133667	PRINT 2 OF 12	

8 (2013) 85C 1544'
 5BQ2MT-216
 L2012,217-288 NC NC NC
 (L2012,289-290) NC <A02F2ZF> F,73-74 NC
 L2012,291-292 NC NC NC
 500FBR,77-80 NC NC NC
 500FBR,107-110 NC NC NC
 L2008,135-136 NC NC NC
 E,87-88 NC NC NC
 L2008,113-114 NC NC NC
 A,115-116 NC NC NC
 L2008,129-130 NC NC NC
 L2008,117-120 NC NC NC
 B,99-100 NC NC NC
 500FBR,5-22 NC NC NC
 L2008,167-170 NC NC NC
 500FBR,27-48 NC NC NC
 500FBR,73-76 NC NC NC
 L2012,365-372 NC NC NC
 A,157-162 NC NC NC
 (A,163-168) <A02FGJJ> L2012,307-312 NC NC
 (A,169-180) NC <A02HY8F> 500FBR,169-180
 L2012,397-412 NC NC NC
 <A02A3XY> E,197-202 NC NC NC
 L2012,419-420 NC NC NC
 A,205-216 NC NC NC

14 (2006) 85C
 5BQ2MT-072
 L2008,1-36
 L2008,121-128
 L2008,133-134
 L2008,131-132
 L2008,49-50
 L2008,119-120
 L2008,167-170
 L2008,57-60
 L2008,207-212
 L2008,155-156
 L2008,69-72

PLACED ON: A02B78L

11 (2013) 85C 1452'
 5BQ2MT-216
 L2012,217-288 NC NC NC
 (L2012,289-290) NC <A02F2ZF> F,73-74 NC
 (L2012,291-292) <A02B78L> A,75-76 NC NC
 <A01Z3V0> 500FBR,77-80 NC NC NC
 <A01WXC9> 500FBR,107-110 NC NC NC
 L2008,135-136 NC NC NC
 E,87-88 NC NC NC
 L2008,113-114 NC NC NC
 A,115-116 NC NC NC
 L2008,129-130 NC NC NC
 A,117-118 NC NC NC
 L2008,119-120 NC NC NC
 B,99-100 NC NC NC
 500FBR,5-22 NC NC NC
 L2008,167-170 NC NC NC
 500FBR,27-48 NC NC NC
 <A01TVYT> 500FBR,73-76 NC NC NC
 L2012,365-372 NC NC NC
 A,157-162 NC NC NC
 (A,163-168) NC <A02FGJJ> L2012,307-312 NC NC
 (A,169-180) NC NC <A02HY8F> 500FBR,169-180
 L2012,397-412 NC NC NC
 <A02A3XY> E,197-202 NC NC NC
 L2012,419-420 NC NC NC
 A,205-216 NC NC NC

15 (PPA) 845C 555'
 INV
 C,1-2
 L2012,291-292
 C,5-24

16 (2014) 845C 959'
 5BQ2MT-024
 B,1-8
 L2008,117-118
 B,11-24

NOTE: CABLE ATTRIBUTES
 8,11,14,15, AND 16 ARE FROM PRINT 3

4

PROJECT # A02J85Q		DATE SVC REQ'D 07/31/2023	
NPANNX 816524	GEO LOC EE4160	CLLI KSCYMO41	
PRIMARY ENGR.: PEDERSEN, CHARLES M			
ENGR. ID: CP861N		PERMIT REQ'D.	N
PHONE #: 8168133667		PRINT 4 OF 12	

- PRINT 3
- 10 (PPA) 85C
5BQ2MR-288
500FBR, 145-160
A, 17-288
 - PRINT 3
 - 13 4"-PVC 4C
 - 85C
 - 14 850' 4"-PVC 4C

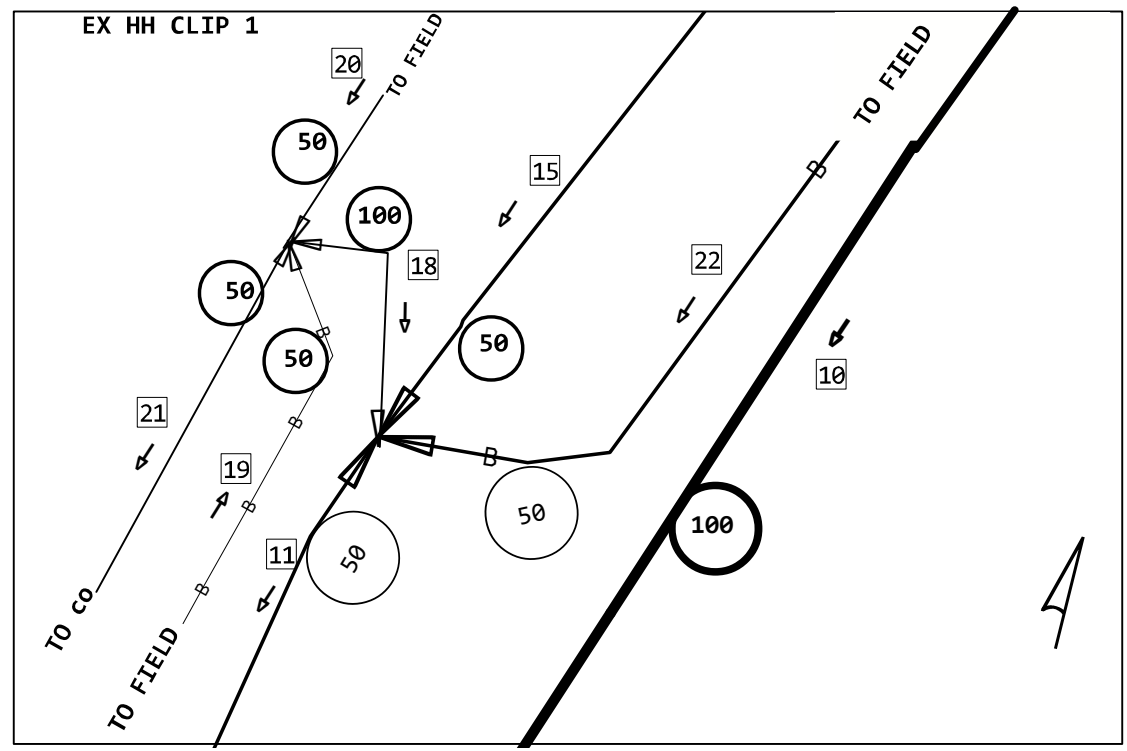
- 1810 SVA ONLY - RODDING - OCCU
- 16 1810' 4"-PVC 4C

- 18 (2013) 85C 100'
5BQ2MT-216
C, 1-118
L2008, 119-120
C, 121-154
C, 155-156
C, 157-166
L2008, 167-170
C, 171-216

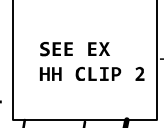
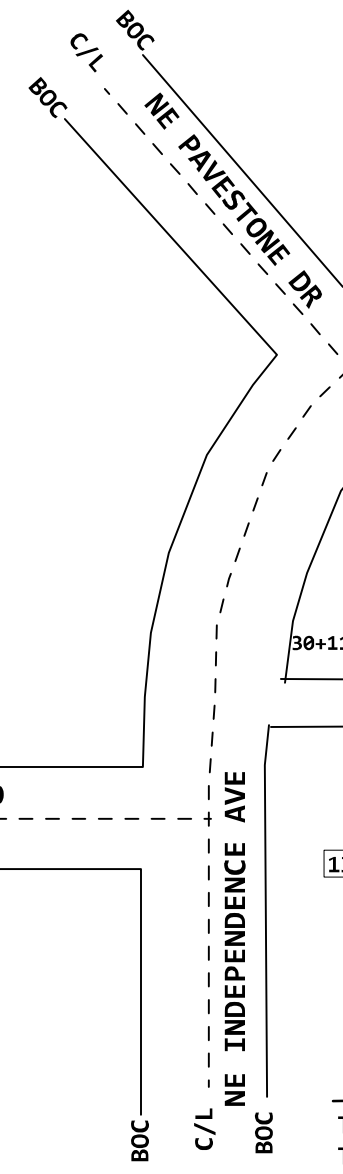
- 19 (2014) 845C 1000'
5BQ2MT-024
A, 1-12
L2008, 133-134
A, 15-24
- 20 (2006) 85C
5BQ2MT-072
L2008, 1-36
L2008, 121-128
A, 45-46
L2008, 131-132
L2008, 49-50
L2008, 119-120
L2008, 167-170
L2008, 57-60
L2008, 207-212
L2008, 155-156
L2008, 69-72

- 21 (2006) 85C
5BQ2MT-072
L2008, 1-36
L2008, 121-128
L2008, 133-134
L2008, 131-132
L2008, 49-50
L2008, 119-120
L2008, 167-170
L2008, 57-60
L2008, 207-212
L2008, 155-156
L2008, 69-72

7
HANDHOLE (2006) 4C
4 X 8 X 4 = 128
FID: 15641886



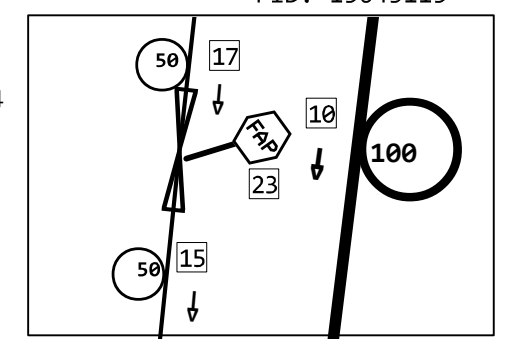
NOTE: CABLES ATTRIBUTES
11, 15, AND 17 ARE ON PRINT 6



- 22 (2013) 845C 668'
5BQ2MT-024
A, 1-4
L2008, 113-114
A, 7-22
L2012, 239-240

- 23 2509 FAP 1400E
(2014) 85C
(L2012, 289-290) NC <A02F2ZF> F, 73-74
(L2012, 291-292) <A02B78L> A, 75-76 NC
<A01Z3V0> 500FBR, 77-80 NC
<A01WXC9> 500FBR, 107-110 NC

8
HANDHOLE (1901) 845C
4 X 8 X 4 = 128
FID: 15643115



UNRELATED CABLES
ARE OMITTED FOR PRINT CLARITY

PROJECT # A02J85Q		DATE SVC REQ'D 07/31/2023
NPANNX 816524	GEO LOC EE4160	CLLI KSCYMO41
PRIMARY ENGR.: PEDERSEN, CHARLES M		
ENGR. ID: CP861N	PERMIT REQ'D.	Y
PHONE #: 8168133667	PRINT 5 OF 12	

11 (2013) 85C 1452'
 5BQ2MT-216
 L2012,217-288 NC NC NC NC
 (L2012,289-290) NC NC <A02F2ZF> F,73-74 NC
 (L2012,291-292) <A02B78L> A,75-76 NC NC NC
 <A01Z3V0> 500FBR,77-80 NC NC NC
 <A01WXC9> 500FBR,107-110 NC NC NC
 L2008,135-136 NC NC NC
 E,87-88 NC NC NC
 L2008,113-114 NC NC NC
 A,115-116 NC NC NC
 L2008,129-130 NC NC NC
 A,117-118 NC NC NC
 L2008,119-120 NC NC NC
 B,99-100 NC NC NC
 500FBR,5-22 NC NC NC
 L2008,167-170 NC NC NC
 500FBR,27-48 NC NC NC
 <A01TVYT> 500FBR,73-76 NC NC NC
 L2012,365-372 NC NC NC
 A,157-162 NC NC NC
 (A,163-168) NC <A02FGJJ> L2012,307-312 NC
 (A,169-180) NC NC <A02HY8F> 500FBR,169-180
 L2012,397-412 NC NC NC
 <A02A3XY> E,197-202 NC NC NC
 L2012,419-420 NC NC NC
 A,205-216 NC NC NC

17 (2013) 85C (5BQ2MT-216
 L2012,217-238 NC NC NC NC
 B,23-24 NC NC NC NC
 L2012,241-288 NC NC NC NC
 (L2012,289-290) NC NC <A02F2ZF> F,73-74 NC
 (L2012,291-292) <A02B78L> A,75-76 NC NC NC
 <A01Z3V0> 500FBR,77-80 NC NC NC
 <A01WXC9> 500FBR,107-110 NC NC NC
 L2008,135-136 NC NC NC
 E,87-88 NC NC NC
 C,89-90 NC NC NC
 A,91-92 NC NC NC
 L2008,129-130 NC NC NC
 A,95-100 NC NC NC
 500FBR,5-22 NC NC NC
 A,119-122 NC NC NC
 500FBR,27-48 NC NC NC
 <A01TVYT> 500FBR,73-76 NC NC NC
 L2012,365-372 NC NC NC
 A,157-162 NC NC NC
 (A,163-168) NC <A02FGJJ> L2012,307-312 NC
 (A,169-180) NC NC <A02HY8F> 500FBR,169-180
 L2012,397-412 NC NC NC
 <A02A3XY> E,197-202 NC NC NC
 L2012,419-420 NC NC NC
 A,205-216 NC NC NC

15 (2013) 85C 3410'
 5BQ2MT-216
 L2012,217-238 NC NC NC NC
 B,23-24 NC NC NC NC
 L2012,241-288 NC NC NC NC
 (L2012,289-290) NC NC <A02F2ZF> F,73-74 NC
 (L2012,291-292) <A02B78L> A,75-76 NC NC NC
 <A01Z3V0> 500FBR,77-80 NC NC NC
 <A01WXC9> 500FBR,107-110 NC NC NC
 L2008,135-136 NC NC NC
 E,87-88 NC NC NC
 C,89-90 NC NC NC
 A,91-92 NC NC NC
 L2008,129-130 NC NC NC
 A,95-100 NC NC NC
 500FBR,5-22 NC NC NC
 A,119-122 NC NC NC
 500FBR,27-48 NC NC NC
 <A01TVYT> 500FBR,73-76 NC NC NC
 L2012,365-372 NC NC NC
 A,157-162 NC NC NC
 (A,163-168) NC <A02FGJJ> L2012,307-312 NC
 (A,169-180) NC NC <A02HY8F> 500FBR,169-180
 L2012,397-412 NC NC NC
 <A02A3XY> E,197-202 NC NC NC
 L2012,419-420 NC NC NC
 A,205-216 NC NC NC

NOTE: CABLES ATTRIBUTES
 11, 15 AND 17 ARE FROM PRINT 5

4

PROJECT # A02J85Q		DATE SVC REQ'D 07/31/2023	
NPANNX 816524	GEO LOC EE4160	CLLI KSCYMO41	
PRIMARY ENGR.: PEDERSEN, CHARLES M			
ENGR. ID: CP861N		PERMIT REQ'D.	N
PHONE #: 8168133667		PRINT 6 OF 12	

17 (2013) 85C
 5BQ2MT-216
 L2012, 217-238 NC NC NC NC
 B, 23-24 NC NC NC NC
 L2012, 241-288 NC NC NC NC
 (L2012, 289-290) NC NC <A02F2ZF> F, 73-74 NC
 (L2012, 291-292) <A02B78L> A, 75-76 NC NC NC
 <A01Z3V0> 500FBR, 77-80 NC NC NC
 <A01WXC9> 500FBR, 107-110 NC NC NC
 L2008, 135-136 NC NC NC
 E, 87-88 NC NC NC
 C, 89-90 NC NC NC
 A, 91-92 NC NC NC
 L2008, 129-130 NC NC NC
 A, 95-100 NC NC NC
 500FBR, 5-22 NC NC NC
 A, 119-122 NC NC NC
 500FBR, 27-48 NC NC NC
 <A01TVYT> 500FBR, 73-76 NC NC NC
 L2012, 365-372 NC NC NC
 A, 157-162 NC NC NC
 (A, 163-168) NC <A02FGJJ> L2012, 307-312 NC
 (A, 169-180) NC NC <A02HY8F> 500FBR, 169-180
 L2012, 397-412 NC NC NC
 <A02A3XY> E, 197-202 NC NC NC
 L2012, 419-420 NC NC NC
 A, 205-216 NC NC NC

22 (2015) 845C 546'
 5BQ2MT-024
 D, 1-2
 L2008, 135-136
 D, 5-18
 500FBR, 19-20
 D, 21-24

26 (2013) 85C 772'
 5BQ2MT-216
 L2012, 217-218 NC
 <A02B619> F, 3-4 NC
 L2012, 221-238 NC
 B, 23-24 NC
 L2012, 241-282 NC
 D, 67-68 NC
 B, 69-72 NC
 C, 73-76 NC
 <A01Z3V0> 500FBR, 77-80 NC
 C, 81-84 NC
 L2008, 135-136 NC
 E, 87-88 NC
 C, 89-90 NC
 A, 91-92 NC
 C, 93-94 NC
 A, 95-96 NC
 A, 97-100 NC
 500FBR, 5-18 NC
 A, 115-118 NC
 A, 119-122 NC
 500FBR, 27-34 NC
 A, 131-132 NC
 500FBR, 37-44 NC
 B, 141-142 NC
 500FBR, 47-48 NC
 B, 145-148 NC
 L2012, 365-372 NC
 A, 157-162 NC
 (A, 163-168) <A02FGJJ> L2012, 307-312
 A, 169-180 NC
 L2012, 397-412 NC
 <A02A3XY> E, 197-202 NC
 L2012, 419-420 NC
 A, 205-216 NC

23 (2012) 845C 1250'
 5BQ2MT-024
 <A01TVYT> 500FBR, 73-76
 <A01WXC9> 500FBR, 107-110
 L2008, 125-128
 A, 13-20
 500FBR, 21-22
 L2008, 119-120

24 (2015) 845C 100'
 5BQ2MT-072
 <A01TVYT> 500FBR, 73-76
 B, 5-8
 <A01WXC9> 500FBR, 107-110
 B, 13-14
 <A02B619> L2012, 219-220
 B, 17-20
 500FBR, 21-22
 B, 23-24
 B, 25-34
 500FBR, 35-36
 B, 37-54
 L2008, 155-156
 B, 157-172

27 (2014) 845C 795'
 5BQ2MT-024
 C, 1-10
 L2008, 155-156
 C, 13-24

18 (2015) 845C 2112'
 5BQ2MT-144
 A, 1-86
 E, 87-88
 A, 89-140
 L2012, 285-288

21 (2013) 845C 772'
 5BQ2MT-216
 L2012, 217-218 NC NC NC
 <A02B619> F, 3-4 NC NC NC
 L2012, 221-238 NC NC NC
 B, 23-24 NC NC NC
 L2012, 241-282 NC NC NC
 D, 67-68 NC NC NC
 B, 69-72 NC NC NC
 C, 73-76 NC NC NC
 <A01Z3V0> 500FBR, 77-80 NC NC NC
 C, 81-84 NC NC NC
 L2008, 135-136 NC NC NC
 E, 87-88 NC NC NC
 A, 89-92 NC NC NC
 L2008, 129-130 NC NC NC
 L2008, 155-156 NC NC NC
 A, 97-100 NC NC NC
 500FBR, 5-18 NC NC NC
 A, 115-118 NC NC NC
 A, 119-122 NC NC NC
 500FBR, 27-34 NC NC NC
 A, 131-132 NC NC NC
 500FBR, 37-48 NC NC NC
 B, 145-148 NC NC NC
 L2012, 365-372 NC NC NC
 A, 157-162 NC NC NC
 (A, 163-168) <A02FGJJ> L2012, 307-312 NC
 (A, 169-180) NC (<A02HY8F> 500FBR, 169-180) <A02HY8F> G, 169-180
 L2012, 397-412 NC NC NC
 <A02A3XY> E, 197-202 NC NC NC
 L2012, 419-420 NC NC NC
 A, 205-216 NC NC NC

25 (2006) 85C
 5BQ2MT-072
 L2008, 1-36
 L2008, 121-128
 A, 45-46
 L2008, 131-132
 L2008, 49-50
 L2008, 119-120
 L2008, 167-170
 L2008, 57-60
 L2008, 207-212
 L2008, 155-156
 L2008, 69-72

28 (2013) 845C 320'
 5BQ2MT-024
 A, 1-8 NC
 L2008, 129-130 NC
 A, 11-20 NC
 (A, 21-22) <A02HXND> 500FBR, 45-46
 A, 23-24 NC

20 (2016) 845C 921'
 5BQ2MT-024
 (A, 1-2) <A02HY8F> 500FBR, 169-170
 A, 3-6 NC
 L2012, 283-284 NC
 A, 9-24 NC

29 (2014) 845C 430'
 5BQ2MT-024
 C, 1-6 NC
 500FBR, 43-44 NC
 (500FBR, 45-46) <A02HXND> F, 21-22
 C, 11-24 NC

NOTE: CABLE ATTRIBUTES 17,18,19,20,21, 22,23,24,25,26,27,28 AND 29 ARE FROM PRINT 7

PROJECT # A02J85Q		DATE SVC REQ'D 07/31/2023	
NPANNX 816524	GEO LOC EE4160	CLLI KSCYMO41	
PRIMARY ENGR.: PEDERSEN, CHARLES M			
ENGR. ID: CP861N		PERMIT REQ'D.	N
PHONE #: 8168133667		PRINT 8 OF 12	

21 (2021) 845C 400'
 5BQ2MT-048
 F,1-6
 500FBR,79-80
 F,9-48

24 (2013) 845C 745'
 5BQ2MT-024
 L2008,49-50
 B,3-12
 L2008,121-122
 B,15-24

22 (2014) 845C 225'
 5BQ2MT-024
 L2012,265-266
 A,3-8
 L2012,405-408
 A,13-20
 L2012,369-372

25 (2008) 845C 1350'
 5BQ2MT-024
 A,1-10
 L2008,25-34
 A,21-24

23 (2013) 85C 1019'
 5BQ2MT-216
 L2012,217-218 NC
 <A02B619> F,3-4 NC
 L2012,221-238 NC
 B,23-24 NC
 L2012,241-282 NC
 D,67-68 NC
 B,69-72 NC
 C,73-76 NC
 <A01Z3V0> A,77-80 NC
 C,81-84 NC
 L2008,135-136 NC
 E,87-88 NC
 C,89-90 NC
 A,91-92 NC
 C,93-94 NC
 A,95-100 NC
 500FBR,5-18 NC
 A,115-122 NC
 500FBR,27-34 NC
 A,131-132 NC
 500FBR,37-44 NC
 B,141-142 NC
 500FBR,47-48 NC
 <A01TVYT> B,145-148 NC
 L2012,365-368 NC
 B,159-162 NC
 A,157-162 NC
 (A,163-168) <A02FGJJ> L2012,307-312
 A,169-180 NC
 L2012,397-404 NC
 A,189-192 NC
 L2012,409-412 NC
 <A02A3XY> E,197-202 NC
 L2012,419-420 NC
 A,205-216 NC

26 (2013) 85C 1481'
 5BQ2MT-216
 L2012,217-218 NC
 <A02B619> F,3-4 NC
 L2012,221-238 NC
 B,23-24 NC
 L2012,241-282 NC
 D,67-68 NC
 B,69-72 NC
 C,73-76 NC
 <A01Z3V0> A,77-80 NC
 C,81-84 NC
 L2008,135-136 NC
 E,87-88 NC
 C,89-90 NC
 A,91-92 NC
 C,93-94 NC
 A,95-100 NC
 500FBR,5-18 NC
 A,115-122 NC
 500FBR,27-34 NC
 A,131-132 NC
 500FBR,37-44 NC
 B,141-142 NC
 500FBR,47-48 NC
 B,145-148 NC
 L2012,365-368 NC
 B,153-156 NC
 A,157-162 NC
 (A,163-168) <A02FGJJ> L2012,307-312
 A,169-180 NC
 L2012,397-404 NC
 A,189-192 NC
 L2012,409-412 NC
 <A02A3XY> E,197-202 NC
 L2012,419-420 NC
 A,205-216 NC

NOTE: CABLE ATTRIBUTES 21,22,23,
 24,25 AND 26 ARE FROM PRINT 9

4

PROJECT # A02J85Q		DATE SVC REQ'D 07/31/2023	
NPANNX 816524	GEO LOC EE4160	CLLI KSCYMO41	
PRIMARY ENGR.: PEDERSEN, CHARLES M			
ENGR. ID: CP861N		PERMIT REQ'D.	N
PHONE #: 8168133667		PRINT 10 OF 12	

PRINT 7

11 (PPA) 85C
5B92MT-144
500FBR, 145-160
B, 17-144

14 (2006) 85C
5BQ2MT-072
L2008, 1-24
A, 25-34
L2008, 35-36
A, 37-38
L2008, 123-124
A, 41-44
A, 45-46
L2008, 131-132
A, 49-50
<A02B619> L2012, 219-220
L2008, 167-170
L2008, 57-60
L2008, 207-212
A, 67-68
L2008, 69-72

85C
1291 SVA ONLY - RODDING - OCCU

16 1291' 4"-PVC 4C

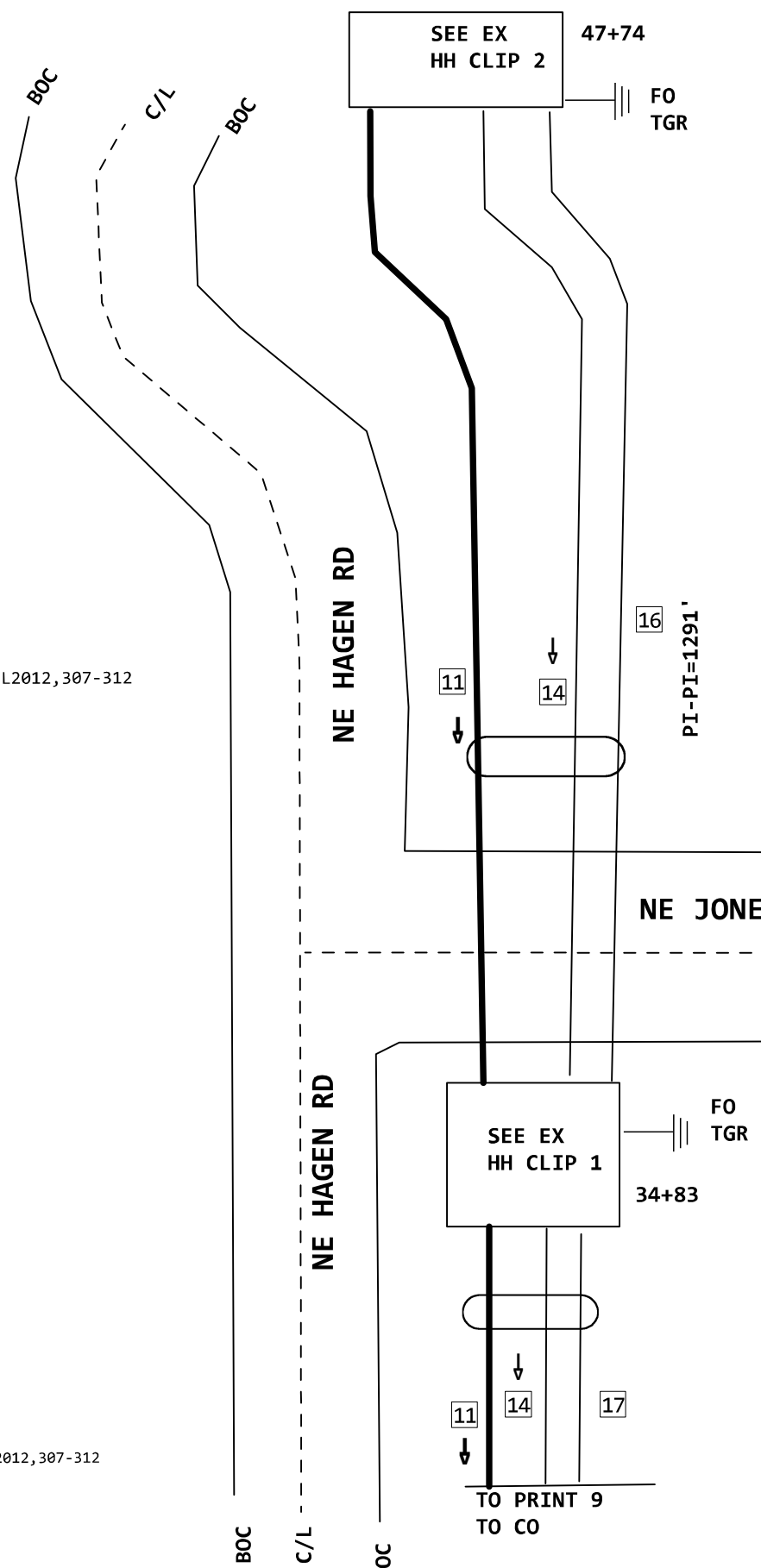
PRINT 9

17 4"-PVC 4C

18 (2014) 845C 596'
5BQ2MT-048
500FBR, 41-44
<A01P9CL> L2012, 365-368
500FBR, 33-34
B, 11-14
500FBR, 15-16
B, 17-20
L2012, 237-238
B, 23-24
L2012, 397-400
L2012, 401-404
B, 33-36
<A01PAHE> L2012, 409-412
B, 41-48

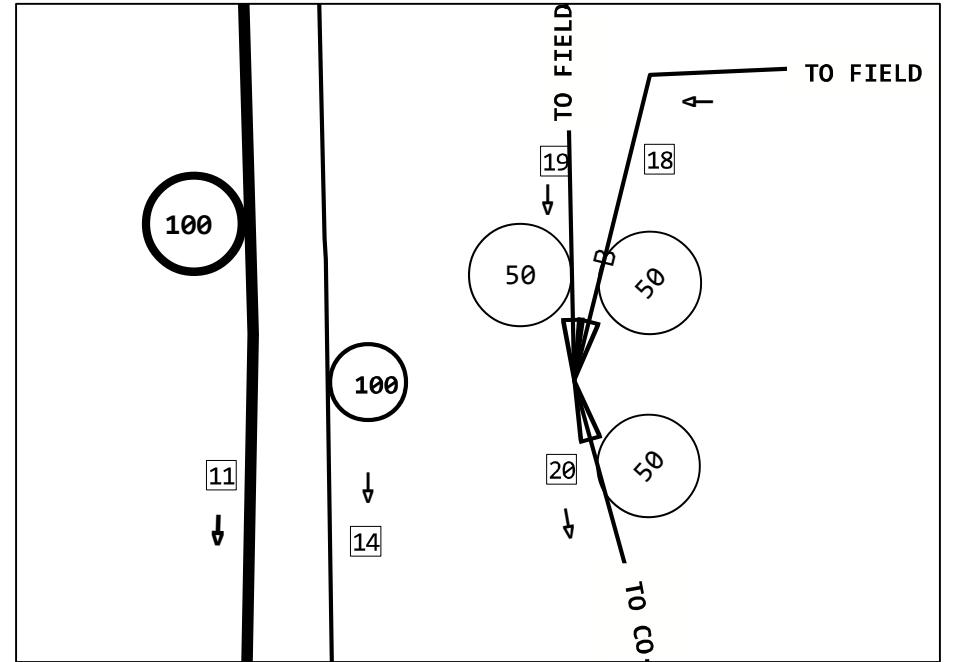
19 (2013) 85C 8881'
5BQ2MT-216
L2012, 217-218 NC
<A02B619> F, 3-4 NC
L2012, 221-236 NC
A, 20-21 NC
B, 23-24 NC
L2012, 241-264 NC
A, 49-50 NC
L2012, 267-282 NC
D, 67-68 NC
B, 69-72 NC
C, 73-76 NC
<A01Z3V0> A, 77-80 NC
C, 81-84 NC
L2008, 135-136 NC
E, 87-88 NC
C, 89-90 NC
A, 91-92 NC
C, 93-94 NC
A, 95-100 NC
500FBR, 5-14 NC
A, 111-112 NC
500FBR, 17-18 NC
A, 115-122 NC
500FBR, 27-32 NC
A, 129-130 NC
A, 131-132 NC
500FBR, 37-40 NC
C, 136-139 NC
B, 141-142 NC
500FBR, 47-48 NC
<A01TVYT> B, 145-148 NC
<A01P9CL> A, 149-152 NC
B, 153-156 NC
A, 157-162 NC
(A, 163-168) <A02FGJJ> L2012, 307-312
A, 169-184 NC
A, 185-188 NC
A, 189-192 NC
<A01PAHE> A, 193-196 NC
<A02A3XY> E, 197-202 NC
L2012, 419-420 NC
A, 205-216 NC

20 (2013) 85C
5BQ2MT-216
L2012, 217-218 NC
<A02B619> F, 3-4 NC
L2012, 221-238 NC
B, 23-24 NC
L2012, 241-282 NC
D, 67-68 NC
B, 69-72 NC
C, 73-76 NC
<A01Z3V0> A, 77-80 NC
C, 81-84 NC
L2008, 135-136 NC
E, 87-88 NC
C, 89-90 NC
A, 91-92 NC
C, 93-94 NC
A, 95-100 NC
500FBR, 5-18 NC
A, 115-122 NC
500FBR, 27-34 NC
A, 131-132 NC
500FBR, 37-44 NC
B, 141-142 NC
500FBR, 47-48 NC
<A01TVYT> B, 145-148 NC
L2012, 365-368 NC
B, 153-156 NC
A, 157-162 NC
(A, 163-168) <A02FGJJ> L2012, 307-312
L2012, 385-404 NC
A, 189-192 NC
L2012, 409-412 NC
<A02A3XY> E, 197-202 NC
L2012, 419-420 NC
A, 205-216 NC



13-EMS
HANDHOLE (2006) 4C
4 X 8 X 4 = 128
FID: 15637273

EX HH CLIP 1



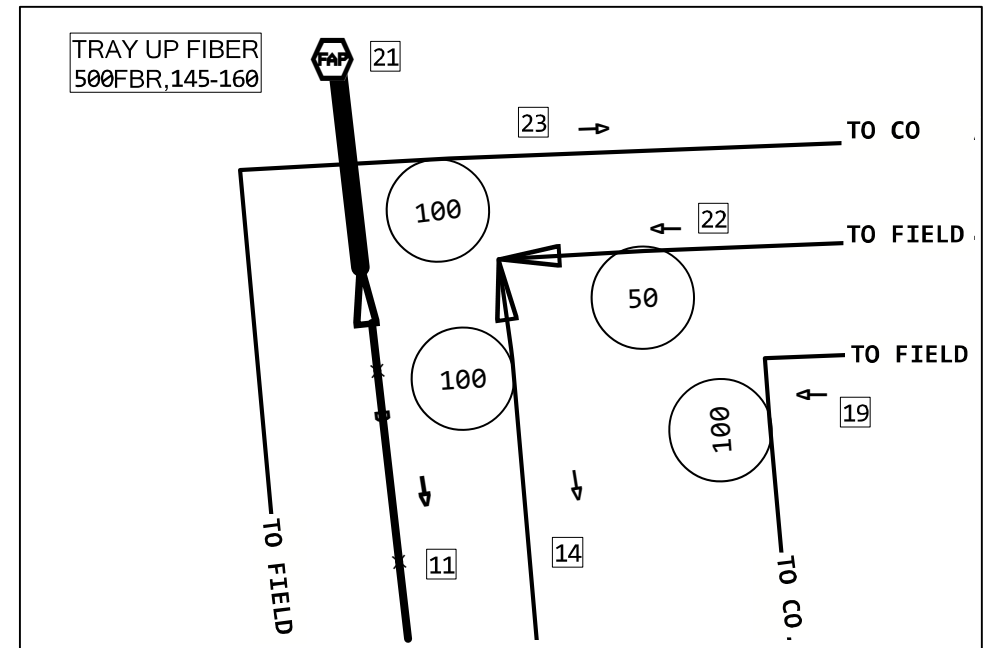
FH A
HANDHOLE (2006) 4C
4 X 8 X 4 = 128
FID: 15638137

TEST FROM
CO ONLY
500FBR, 145-160

845C
@CO
16 TESTING FIBER FACILITIES

85C
12.970 KFT TO CO
1 SPLICE FIBER NEW RIBBON U
SPLICE ENCLOSURE

EX HH CLIP 2



NOTE: CABLE ATTRIBUTES 22 AND 23,
ARE ON PRINT 12

21 F 1400 NE HAGEN RD
(PPA) 85C
500FBR, 145-160
C, 17-24

PROJECT # A02J85Q		DATE SVC REQ'D 07/31/2023	
NPANNX 816524	GEO LOC EE4160	CLLI KSCYMO41	
PRIMARY ENGR.: PEDERSEN, CHARLES M			
ENGR. ID: CP861N		PERMIT REQ'D.	Y
PHONE #: 8168133667		PRINT 11 OF 12	

22 (2014) 85C 950'
 5BQ2MT-072
 L2008, 1-24
 A, 25-34
 L2008, 35-36
 A, 37-38
 L2008, 123-124
 A, 41-44
 L2008, 133-134
 L2008, 131-132
 A, 49-50
 <A02B619> L2012, 219-220
 L2008, 167-170
 L2008, 57-60
 L2008, 207-212
 A, 67-68
 L2008, 69-72

NOTE: CABLE ATTRIBUTES 22 AND 23,
ARE FROM PRINT 11

23 (2014) 85C
 5BQ2MT-024
 FE02A, 1-2
 L2008, 71-72
 B, 5-24

PROJECT # A02J85Q		DATE SVC REQ'D 07/31/2023	
NPANNX 816524	GEO LOC EE4160	CLLI KSCYMO41	
PRIMARY ENGR.: PEDERSEN, CHARLES M			
ENGR. ID: CP861N		PERMIT REQ'D.	N
PHONE #: 8168133667		PRINT 12 OF 12	