

Van Deurzen and Associates, P.A.
 11011 King Street, Suite 130
 Overland Park, KS 66210
 (913) 451-6305 FAX: (913) 451-1021

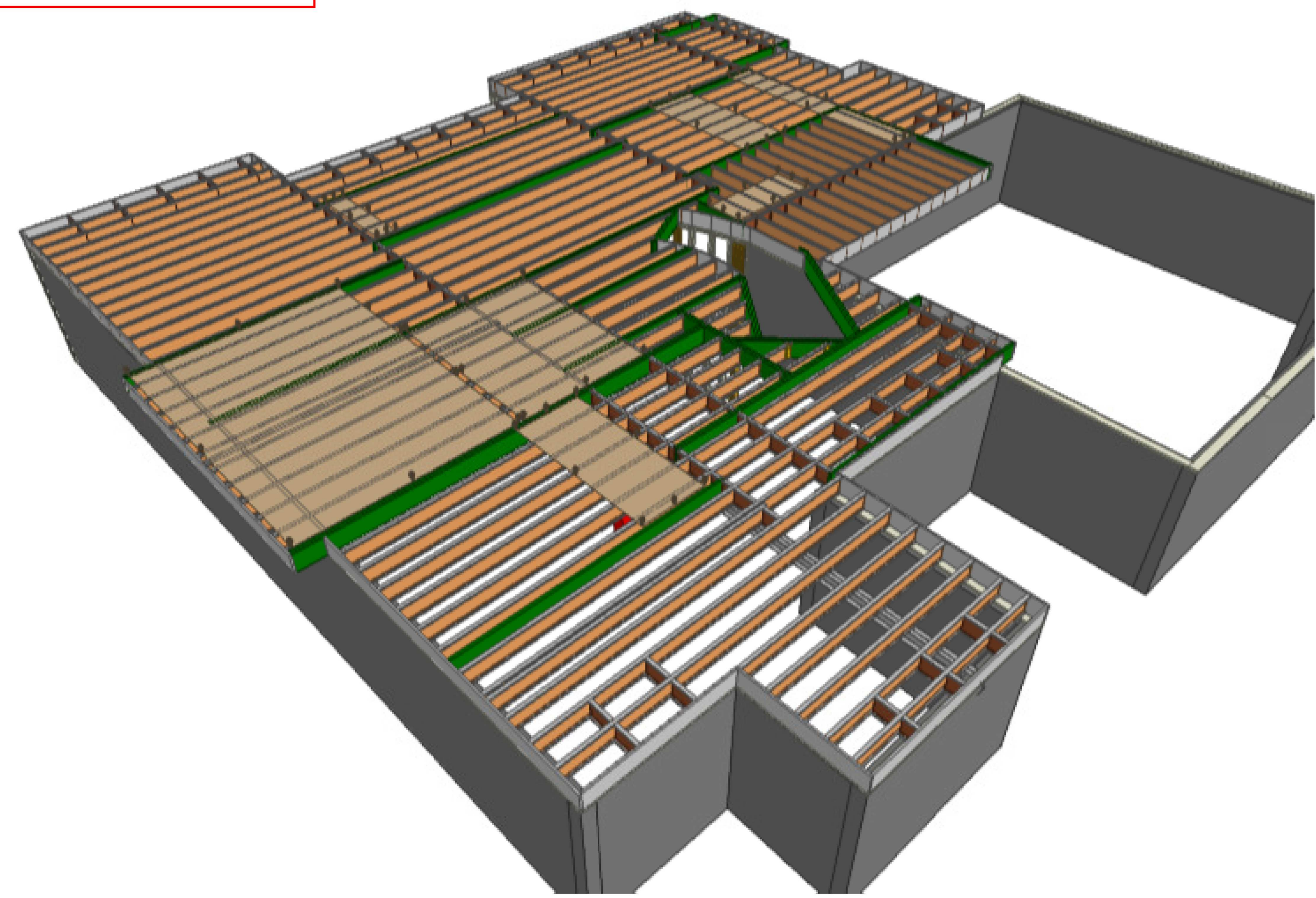
This shop drawing has been reviewed for conformance with the design concept and information given in the Contract Documents.

Reviewed with no exceptions noted.
 Reviewed as noted.
 Returned for correction.
 Not Reviewed.

By: JWH Date: 04/04/2023

Products				
PlotID	Net Qty	Product	Length	Plies
J1-16" O.C.	4	11-7/8" BCI@ 5000s-1.8	36' 0"	1
J2-16" O.C.	10	11-7/8" BCI@ 5000s-1.8	34' 0"	1
J3-16" O.C.	4	11-7/8" BCI@ 5000s-1.8	32' 0"	1
J4-16" O.C.	3	11-7/8" BCI@ 5000s-1.8	30' 0"	1
J5-16" O.C.	3	11-7/8" BCI@ 5000s-1.8	28' 0"	1
J6-16" O.C.	3	11-7/8" BCI@ 5000s-1.8	24' 0"	1
J7-16" O.C.	9	11-7/8" BCI@ 5000s-1.8	22' 0"	1
J8-16" O.C.	6	11-7/8" BCI@ 5000s-1.8	20' 0"	1
J9-16" O.C.	3	11-7/8" BCI@ 5000s-1.8	18' 0"	1
J10-16" O.C.	6	11-7/8" BCI@ 5000s-1.8	16' 0"	1
J11-16" O.C.	2	11-7/8" BCI@ 5000s-1.8	16' 0"	2
J12-16" O.C.	16	11-7/8" BCI@ 5000s-1.8	12' 0"	1
J13-16" O.C.	1	11-7/8" BCI@ 5000s-1.8	10' 0"	1
J14-16" O.C.	5	11-7/8" BCI@ 5000s-1.8	8' 0"	1
J15-16" O.C.	1	11-7/8" BCI@ 5000s-1.8	6' 0"	1
J16-16" O.C.	5	11-7/8" BCI@ 5000s-1.8	4' 0"	1
J17-16" O.C.	4	11-7/8" BCI@ 5000s-1.8	2' 0"	1
B1-2	2	1-3/4" x 11-7/8" VERSA-LAM@ 2.0 3100 SP	34' 0"	2
B2-2	2	1-3/4" x 11-7/8" VERSA-LAM@ 2.0 3100 SP	24' 0"	2
B3	2	1-3/4" x 11-7/8" VERSA-LAM@ 2.0 3100 SP	20' 0"	1
B4-2	2	1-3/4" x 11-7/8" VERSA-LAM@ 2.0 3100 SP	18' 0"	2
B5-2	6	1-3/4" x 11-7/8" VERSA-LAM@ 2.0 3100 SP	16' 0"	2
B6	2	1-3/4" x 11-7/8" VERSA-LAM@ 2.0 3100 SP	14' 0"	1
B7-2	4	1-3/4" x 11-7/8" VERSA-LAM@ 2.0 3100 SP	14' 0"	2
B8-2	2	1-3/4" x 11-7/8" VERSA-LAM@ 2.0 3100 SP	12' 0"	2
B9-2	2	1-3/4" x 11-7/8" VERSA-LAM@ 2.0 3100 SP	10' 0"	2
B10	2	1-3/4" x 11-7/8" VERSA-LAM@ 2.0 3100 SP	8' 0"	1
B11-2	2	1-3/4" x 11-7/8" VERSA-LAM@ 2.0 3100 SP	8' 0"	2
B12	1	1-3/4" x 11-7/8" VERSA-LAM@ 2.0 3100 SP	6' 0"	1
B13-2	6	1-3/4" x 11-7/8" VERSA-LAM@ 2.0 3100 SP	6' 0"	2
Ca1	20	1-1/8" x 11-7/8" BC RIM BOARD OSB	12' 0"	2
Bk1	185	11-7/8" BCI@ 5000s-1.8	2' 0"	1

Connector Summary				
PlotID	Qty	Manuf	Product	Flange
H2	1	Simpson	HU11	None
H3	3	Simpson	HU410	None
H4	1	Simpson	ITS2.06/11.88	None
H5	22	Simpson	ITS2.06/11.88	None
H6	2	Simpson	SUL2.06/9	None
H7	1	Simpson	SUL410	None
H8	1	Simpson	SUR410	None
H9	9	Simpson	LSSR2.1Z	None
H10	3	Simpson	LSSR410Z	None
No Soln.	1			None



Revisions: BY:

Boise Cascade

Teague Lumber Company Inc.

SALES PRESENTATION DRAWING
 No structural or dimensional check has been made of this design drawings of the building, therefore purchaser is to check and approve all dimensions, quantities, loads, and details carefully.
 This drawing has not been checked by Boise Engineering.

NOTE:
 ALL MEASUREMENTS TO BE VERIFIED IN THE FIELD.

Teague Lumber
 2014 SW Red Barn Lane
 Boise Cascade
 Lee's Summit, MO

BC FRAMER

Scale: 1/4"=1'-0"

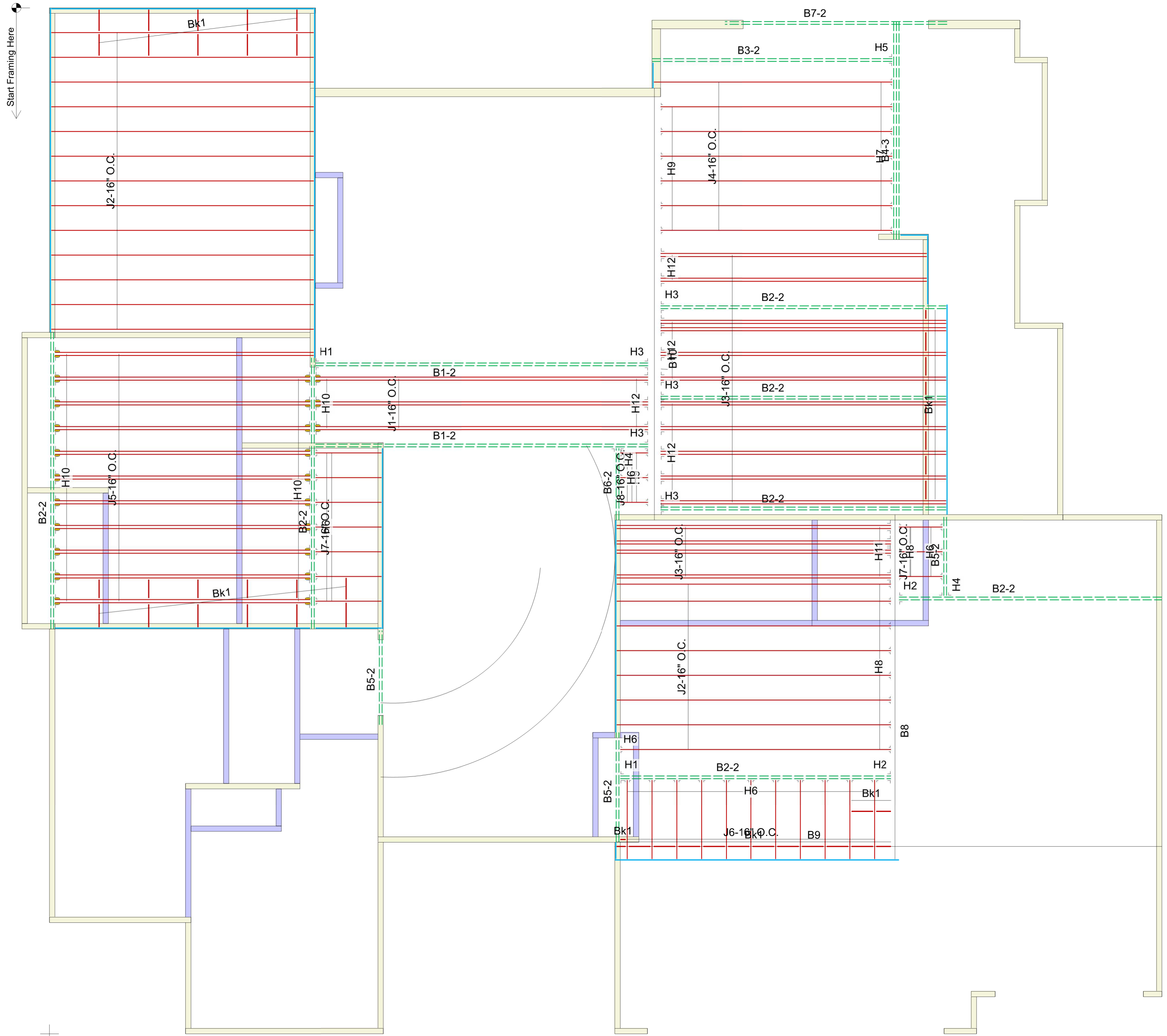
Date:

By: **Don Happel**

File: 2014 SW Red Barn Lane

DWG:

Sheet: 1/2



Products					
PlotID	Net Qty	Product	Length	Plies	
J1-16" O.C.	6	9-1/2" BCI@ 5000s-1.8	18' 0"	2	
J2-16" O.C.	21	9-1/2" BCI@ 5000s-1.8	16' 0"	1	
J3-16" O.C.	30	9-1/2" BCI@ 5000s-1.8	16' 0"	2	
J4-16" O.C.	7	9-1/2" BCI@ 5000s-1.8	14' 0"	1	
J5-16" O.C.	22	9-1/2" BCI@ 5000s-1.8	14' 0"	2	
J6-16" O.C.	11	9-1/2" BCI@ 5000s-1.8	6' 0"	1	
J7-16" O.C.	10	9-1/2" BCI@ 5000s-1.8	4' 0"	1	
J8-16" O.C.	3	9-1/2" BCI@ 5000s-1.8	2' 0"	1	
B1-2	4	1-3/4" x 9-1/2" VERSA-LAM@ 2.0 3100 SP	18' 0"	2	
B2-2	14	1-3/4" x 9-1/2" VERSA-LAM@ 2.0 3100 SP	16' 0"	2	
B3-2	2	1-3/4" x 9-1/2" VERSA-LAM@ 2.0 3100 SP	14' 0"	2	
B4-3	3	1-3/4" x 9-1/2" VERSA-LAM@ 2.0 3100 SP	12' 0"	3	
B5-2	6	1-3/4" x 9-1/2" VERSA-LAM@ 2.0 3100 SP	6' 0"	2	
B6-2	2	1-3/4" x 9-1/2" VERSA-LAM@ 2.0 3100 SP	4' 0"	2	
B7-2	2	1-3/4" x 11-7/8" VERSA-LAM@ 2.0 3100 SP	12' 0"	2	
Ca1	11	1-1/8" x 9-1/2" BC RIM BOARD OSB	12' 0"	1	
Bk1	45	9-1/2" BCI@ 5000s-1.8	2' 0"	1	

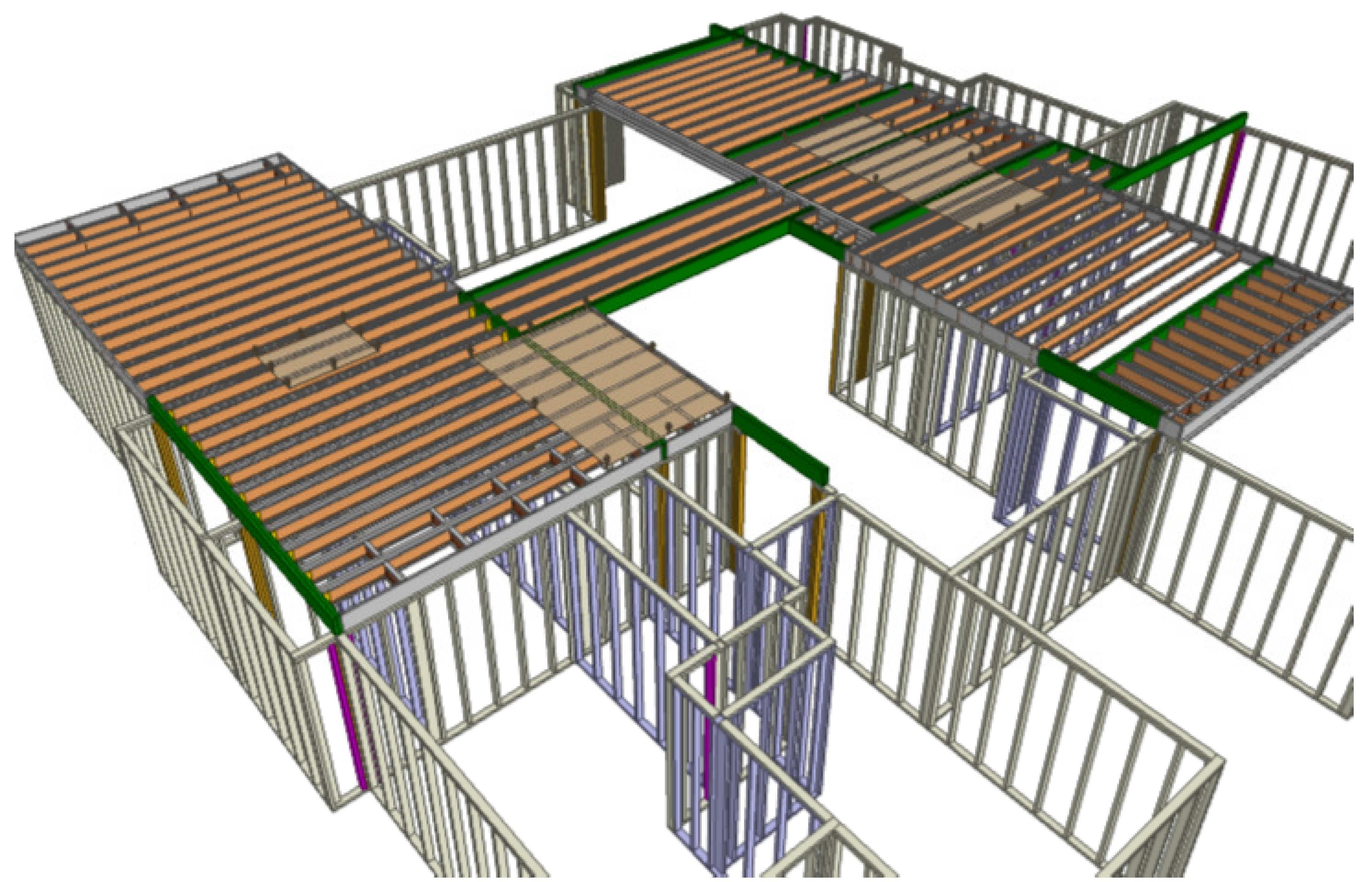
Connector Summary				
PlotID	Qty	Manuf	Product	Flange
H1	2	Simpson	HGUS410	None
H2	2	Simpson	HGUS410	None
H3	5	Simpson	HGUS410	None
H4	2	Simpson	HU410	None
H5	1	Simpson	HU410	None
H6	25	Simpson	ITS2.06/9.5	Reverse
H7	7	Simpson	ITS2.06/9.5	None
H8	11	Simpson	ITS2.06/9.5	None
H9	9	Simpson	ITS2.06/9.5	None
H10	24	Simpson	MIT4.12/9.5	None
H11	4	Simpson	MIT4.12/9.5	None
H12	14	Simpson	MIT4.12/9.5	None

Van Deurzen and Associates, P.A.
 11011 King Street, Suite 130
 Overland Park, KS 66210
 (913) 451-6305 FAX: (913) 451-1021

This shop drawing has been reviewed for conformance with the design concept and information given in the Contract Documents.

Reviewed with no exceptions noted.
 Reviewed as noted.
 Returned for correction.
 Not Reviewed.

By: JWH Date: 04/04/2023



Revisions: BY:

Boise Cascade

Teague Lumber Company Inc.

SALES PRESENTATION DRAWING
 No structural or dimensional check has been made of this design drawings of the building, therefore purchaser is to check and approve all dimensions, quantities, loads, and details carefully.
 This drawing has not been checked by Boise Engineering.

NOTE:
 ALL MEASUREMENTS TO BE VERIFIED IN THE FIELD.

Teague Lumber Company Inc.
 2014 SW Red Barn Lane
 Boise Cascade
 Lee's Summit, MO

BC FRAMER

Scale: 1/4"=1'-0"

Date:

By: Don Happel

File: 2014 SW Red Barn Lane

DWG:

Sheet: 2/2