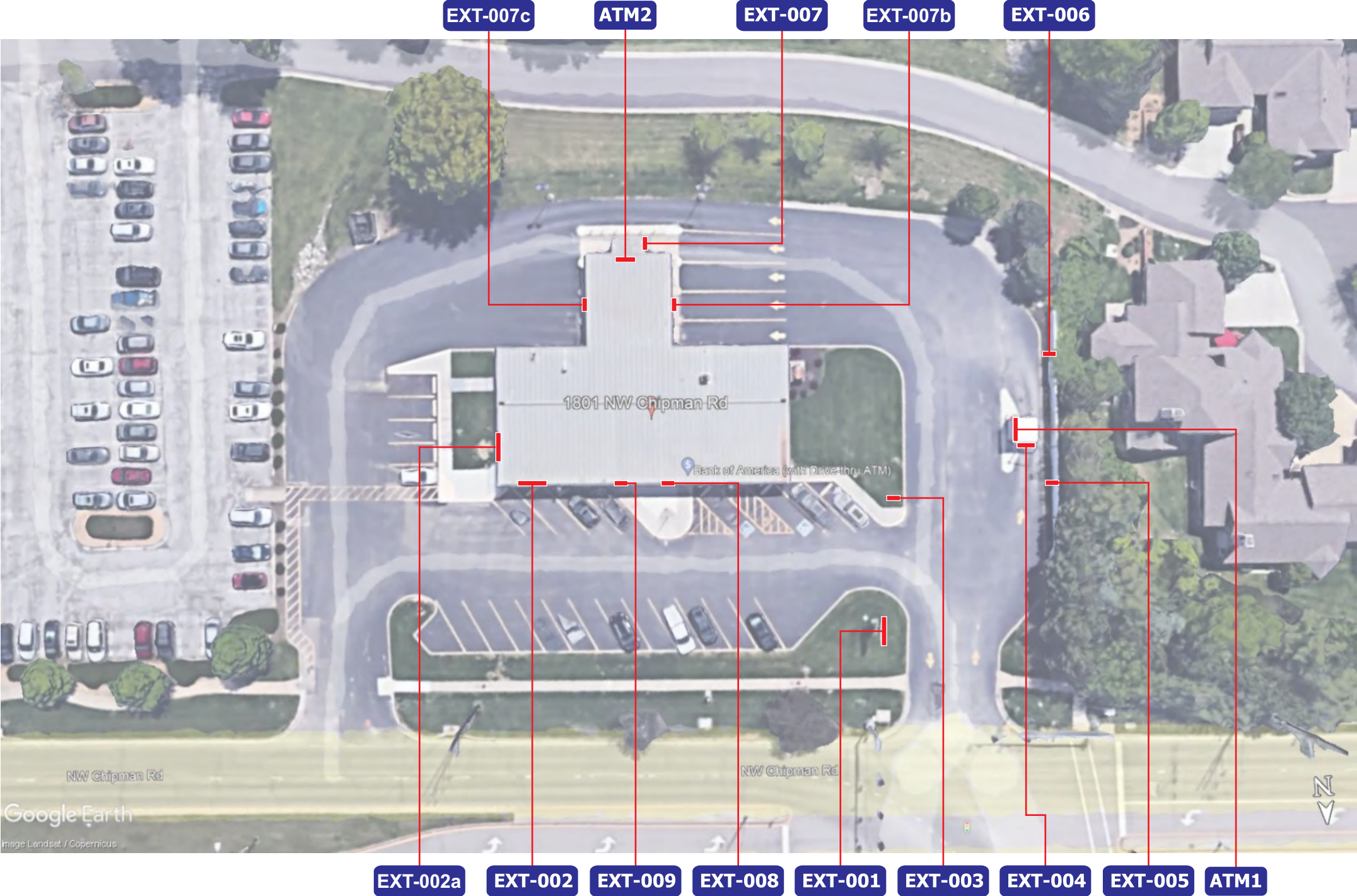


SITE OVERVIEW



Proposed Sign Schedule

Item	Description	Qty	Page #
EXT-001	A3ng - D/F Illuminated Pylon	1	3-4
EXT-002	C3ng - Illuminated Channel Letters on Backer	1	5,7
EXT-002a	C3ng - Illuminated Channel Letters on Backer	1	6,7
EXT-003	P1ng - D/F Directional	1	8
EXT-004	SS1ng - Informational Regulatory (Clearance Sign)	1	9
EXT-005	Pole Regulatory Sign - DOT No Parking	1	10
EXT-006	Pole Regulatory Sign - DOT No Parking	1	10
EXT-007	SS3ng - Directional Regulatory (Drive-thru ATM)	1	12
EXT-007a	Electronic Canopy Sign Removal - By Others	3	13
EXT-007b	SS1ng - Informational Regulatory (Clearance Sign)	1	14
EXT-007c	SS3ng - Directional Regulatory (Drive-thru ATM)	1	16
EXT-008	Entrance Graphics - Retail Center Hours Plaque	1	17
EXT-008a	Vinyl Decal Removal	1	18
EXT-009	RW1ng - Regulatory Wall Plaque - No Skateboarding	1	19
ATM 1	ATM Surround - By Others	1	20
ATM 2	Drive-Up ATM - Leave As Is	1	21
ATM 3	Walk-Up ATM - Leave As Is	1	22



Stratus™

stratusunlimited.com

8959 Tyler Boulevard
Mentor, Ohio 44060

888.503.1569

CLIENT:

BANK OF AMERICA

ADDRESS:

1801 NW Chipman Rd
Lees Summit, MO
64081-3939

PAGE NO.:

2

ORDER NUMBER:

1189389

SITE NUMBER:

180100

ELECTRONIC FILE NAME:

K:\ACCOUNTS\BIBANK OF AMERICA\2023\MO\180100_Lees Summit\4306_180100_Lees Summit.cdr

PROJECT NUMBER:

4306

PROJECT MANAGER:

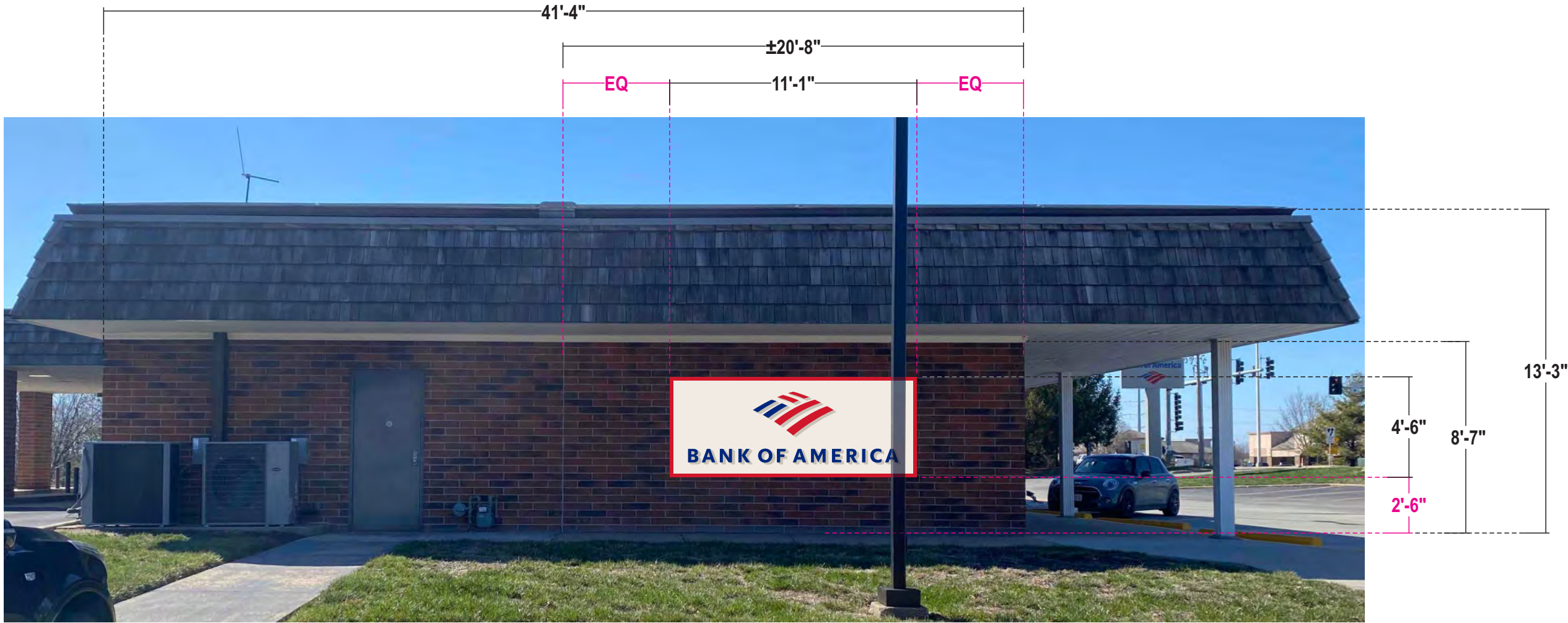
Paul Fischer

Rev #	Req #	Date/Artist	Description	Rev #	Req #	Date/Artist	Description
Original	421950	03/21/23 NS					

PRINTS ARE THE EXCLUSIVE PROPERTY OF STRATUS. THIS MATERIAL SHALL NOT BE USED, DUPLICATED, OR OTHERWISE REPRODUCED WITHOUT THE PRIOR WRITTEN CONSENT OF STRATUS.



NEW ELECTRICAL CIRCUIT REQUIRED;
TO BE PROVIDED BY OTHERS



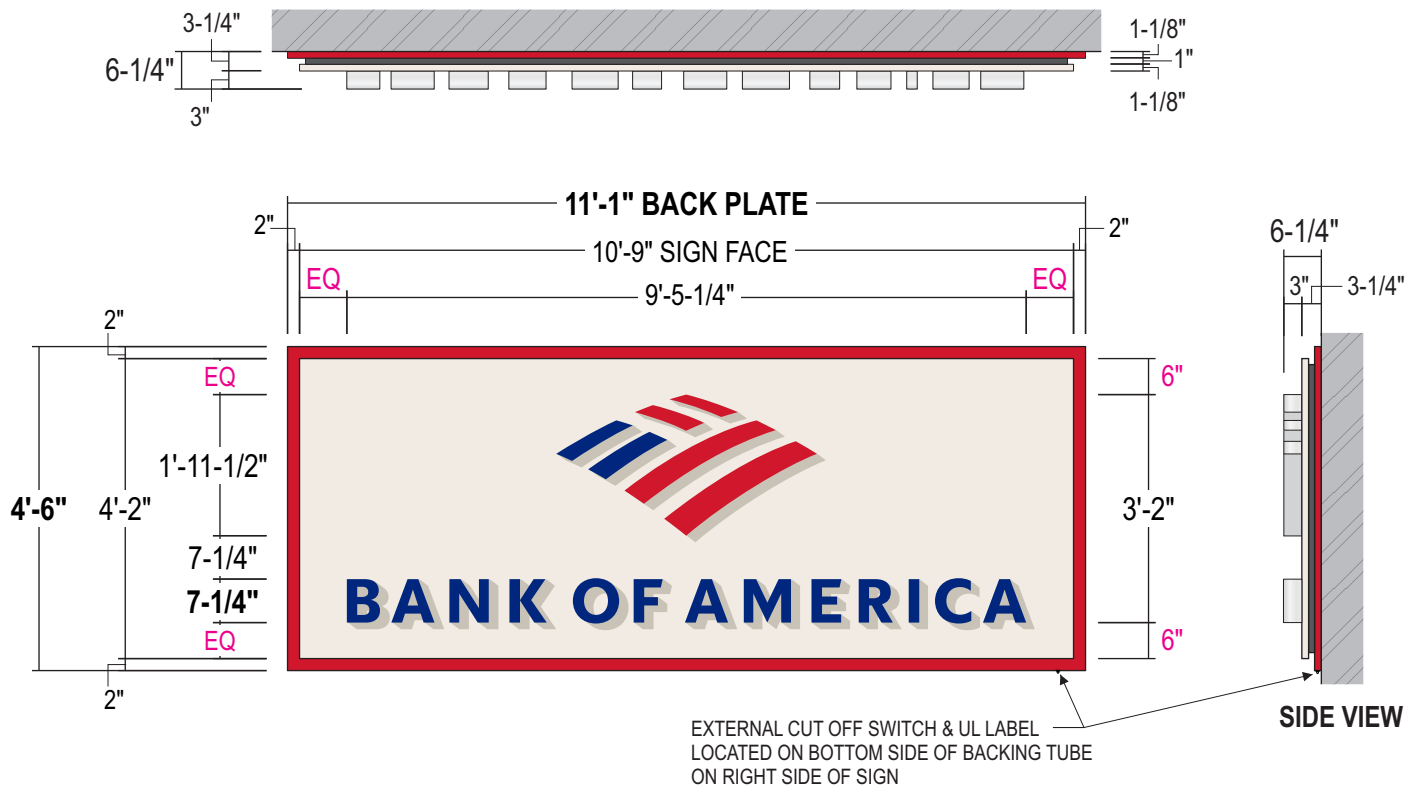
PROPOSED SIGNAGE

EXT-002 ILLUMINATED CHANNEL LETTERS ON BACKER (STACKED)

EXT-002a C3ng

Scale: 3/8"=1'-0"

49.9 square feet



- CABINET FACE:** 1/8" thick aluminum sign panel. Chem weld 1"x1"x.125" Aluminum tube frame at perimeter to form sign box. Miter cut, weld and grind smooth at corners. Paint finish face and tube frame Garbo Silver. Gloss Finish.
- LETTERS:** 1/2" thick Plaskolite 2406 LD acrylic w/ routed back 5/16" from back leaving a 3/16" thick x 5/32" flange for drop in faces secured thru returns (see detail). Surface applied vinyl overlays to match colors shown w/ 3M overlamine. 3" deep .040 alum returns - Aluminum Coil Bright Brushed Clear by Alumet Supply. .090" alum. backs - insides painted w/ White Light Enhancement paint.

- BACKING SHEET & FRAME:** 1/8" Aluminum Angle Frame. Form as shown. Paint finish Bank of America Dark Gray. Semi-Gloss Finish. Mechanically attach to rear tube frame with countersunk flathead stainless steel screws. Paint screw heads to match.
- 1" Aluminum tube frame at perimeter of backing sheet. size as required. Paint finish all exposed surfaces Bank of America Red. Semi-Gloss finish.

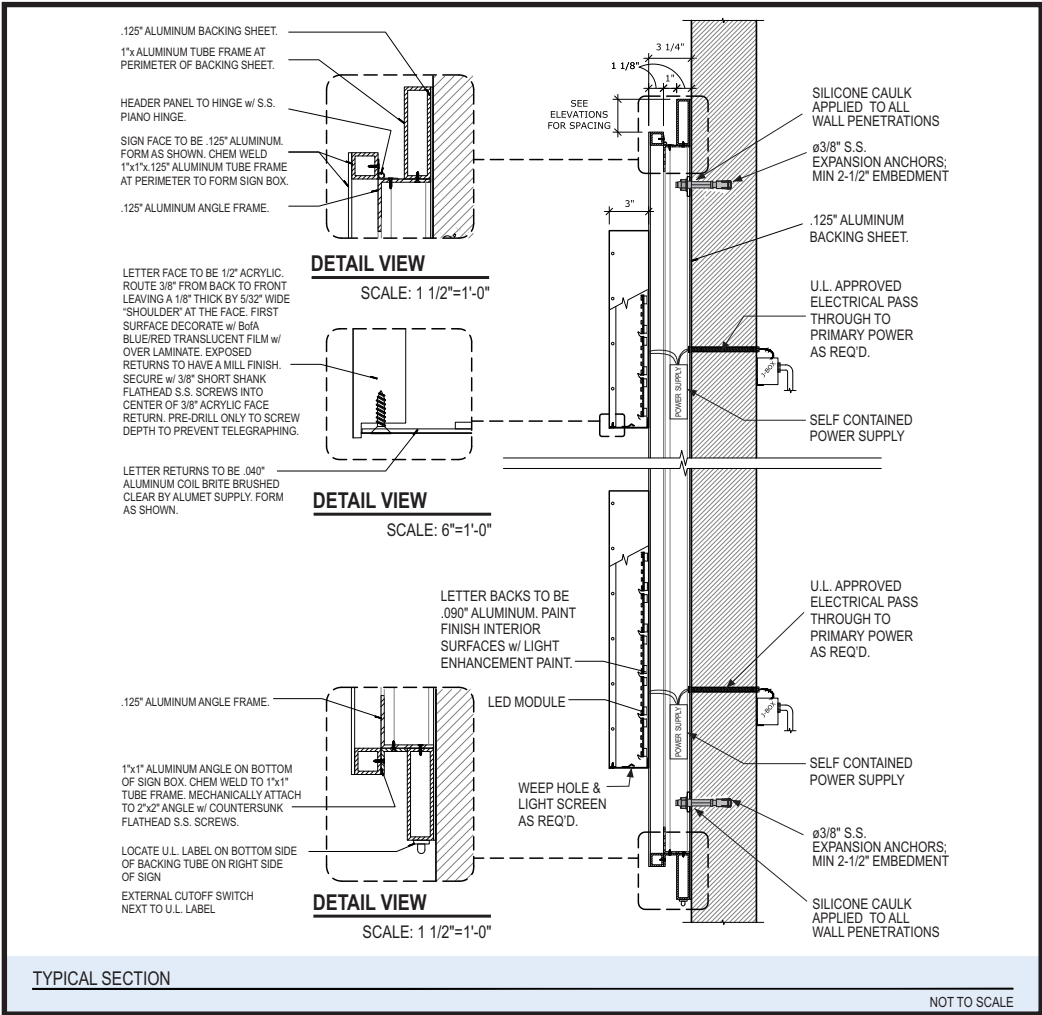
INSTALL: Flush mount to brick wall using 3/8" expansion anchors, minimum 2-1/2" embedment

QUANTITY: (2) Two Signs required

ILLUM.: Agilight White LED illumination as required by manufacturer or approved equivalent. Self contained power supplies

COLOR PALETTE

- | | |
|--|--|
| Matthews Garbo Silver
MP02650R14405 LVG. Full Gloss. | 3M 3630-2413 Red
w/ Overlam 3M 3660M |
| Bank of America Dark Gray
MP58477. Semi-Gloss. | 3M 3630-8530 Blue
w/ Overlam 3M 3660M |
| Matthews Red MP49696
Akzo Nobel Sign 20129. Semi-Gloss. | Brite Brushed Alum.
Coil -Alumet Supply |



THIS SIGN IS INTENDED TO BE INSTALLED IN ACCORDANCE WITH THE REQUIREMENTS OF ARTICLE 600 OF THE NATIONAL ELECTRICAL CODE AND/OR OTHER APPLICABLE LOCAL CODES. THIS INCLUDES PROPER GROUNDING AND BONDING OF SIGN.

TOLERANCE: ± 1/16" ON ALL DIMENSIONS

USE WHITE SILICONE TO CONCEAL LIGHT LEAKS

WALL TYPE	PREFERRED FOR ALL WALL TYPES WHEN POSSIBLE	EIFS WALL W/ FOAM INSULATION
SECTION		
ANCHOR TYPE	ø1/4"-3/8" THREADED ROD	ø1/4"-3/8" THREADED ROD W/ ALUMINUM OR PVC COMPRESSION SLEEVE

Stratus™

stratusunlimited.com

8959 Tyler Boulevard
Mentor, Ohio 44060

888.503.1569

CLIENT:

BANK OF AMERICA

ADDRESS:

1801 NW Chipman Rd
Lees Summit, MO
64081-3939

PAGE NO.:

7

ORDER NUMBER:

1189389

SITE NUMBER:

180100

ELECTRONIC FILE NAME:

K:\ACCOUNTS\BANK OF AMERICA\2023\MO\180100_Lees Summit\4306_180100_Lees Summit.cdr

PROJECT NUMBER:

4306

PROJECT MANAGER:

Paul Fischer

Rev #	Req #	Date/Artist	Description	Rev #	Req #	Date/Artist	Description
Original	421950	03/21/23 NS					

PRINTS ARE THE EXCLUSIVE PROPERTY OF STRATUS. THIS MATERIAL SHALL NOT BE USED, DUPLICATED, OR OTHERWISE REPRODUCED WITHOUT THE PRIOR WRITTEN CONSENT OF STRATUS.