

SIGN TYPES

- EAST ELEVATION = FRONT LIT FABRICATED NEW CHANNEL LETTERS (WITH CONTOUR DIRECT MOUNT) QUANTITY: 1
- FRONT DOOR VINYL GRAPHICS



**SIGN LOCATION SITE PLAN**  
NO SCALE



Since 1965

5198 NORTH LAKE DRIVE  
LAKE CITY, GA 30260  
404-361-3800  
FAX 404-361-7038  
WWW.CLAYTONSIGNS.COM

3/28/2023

*Hollywood Feed*

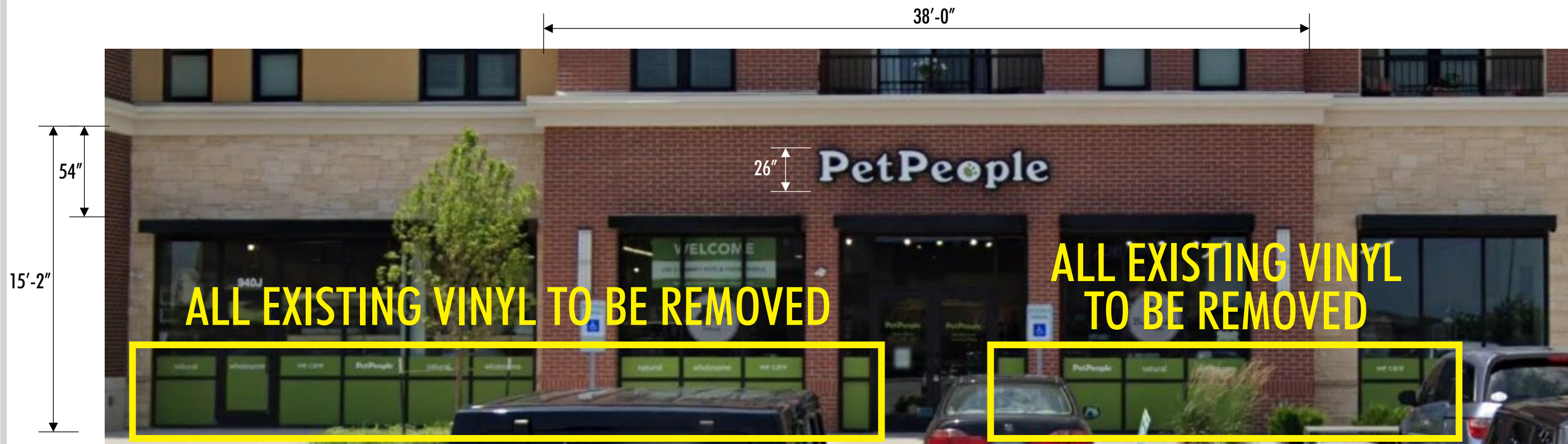
STORE #483  
940 NW PRYOR ROAD, SUITE 6  
LEE'S SUMMIT, MISSOURI 64081

DRAWN BY: BRYANT MARK  
ACCOUNT REP: JIMMY NEWMON  
SCALE: AS INDICATED  
DRAWING FILE NAME  
O:\BM\Folder H\ Hollywood Feed 483\_  
Lee's Summit Missouri\_3.28.2023\_.cdr

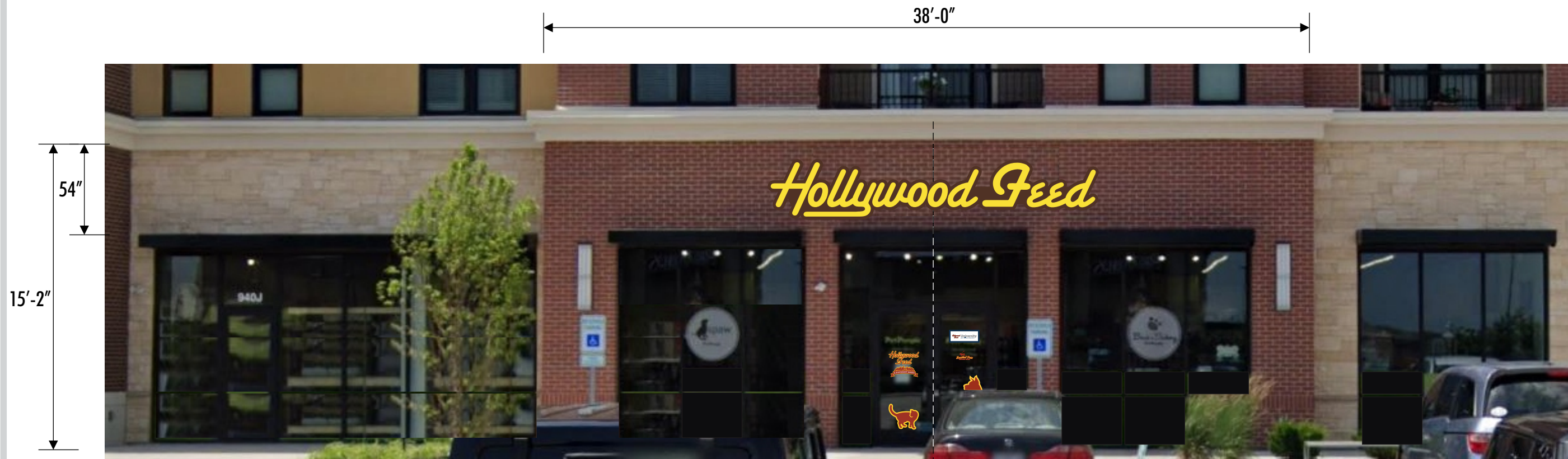
THIS DRAWING IS AN ORIGINAL, UNPUBLISHED DESIGN  
CREATED BY CLAYTON SIGNS, INC. IT IS NOT TO BE  
REPRODUCED, CHANGED, OR EXHIBITED TO ANYONE  
OUTSIDE OF YOUR COMPANY IN WHOLE OR IN PART  
WITHOUT WRITTEN PERMISSION FROM THE OWNER OF  
CLAYTON SIGNS, INC. ANY SUCH ACTIONS MAY BE  
SUBJECT TO LEGAL ACTION IN A COURT OF LAW.

© 2023 ALL RIGHTS RESERVED





EXISTING CONDITION



REVISED CONDITION

CENTER LINE BETWEEN DOUBLE ENTRY DOORS

EAST ELEVATION = FRONT LIT FABRICATED NEW CHANNEL LETTERS (WITH CONTOUR DIRECT MOUNT) **QUANTITY: 1**

SCALE: 3/16" = 1'-0"



Since 1965

5198 NORTH LAKE DRIVE  
LAKE CITY, GA 30260  
404-361-3800  
FAX 404-361-7038  
WWW.CLAYTONSIGNS.COM

3/28/2023

*Hollywood Feed*

STORE #483  
940 NW PRYOR ROAD, SUITE 6  
LEE'S SUMMIT, MISSOURI 64081

DRAWN BY: BRYANT MARK  
ACCOUNT REP: JIMMY NEWMON  
SCALE: AS INDICATED  
DRAWING FILE NAME  
O:\BM\ Folder H \ Hollywood Feed 483\_  
Lee's Summit Missouri\_3.28.2023\_.cdr

THIS DRAWING IS AN ORIGINAL, UNPUBLISHED DESIGN  
CREATED BY CLAYTON SIGNS, INC. IT IS NOT TO BE  
REPRODUCED, CHANGED, OR EXHIBITED TO ANYONE  
OUTSIDE OF YOUR COMPANY IN WHOLE OR IN PART  
WITHOUT WRITTEN PERMISSION FROM THE OWNER OF  
CLAYTON SIGNS, INC. ANY SUCH ACTIONS MAY BE  
SUBJECT TO LEGAL ACTION IN A COURT OF LAW.

© 2023 ALL RIGHTS RESERVED

PAGE  
**3/5**

PAINT COLOR FOR RETURNS + RETAINER CAP

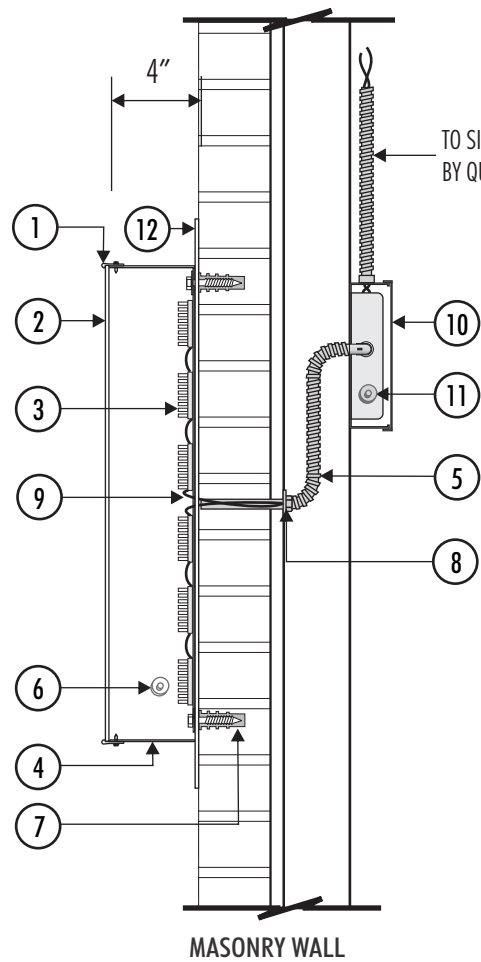
 PANTONE 484 C GLOSS FINISH

PAINT COLOR FOR CONTOUR BACKGROUND

 PANTONE 476 C GLOSS FINISH

ACRYLIC FACES (TRANSLUCENT VINYL)

 3M 3630-125


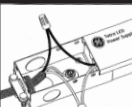
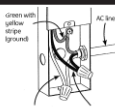


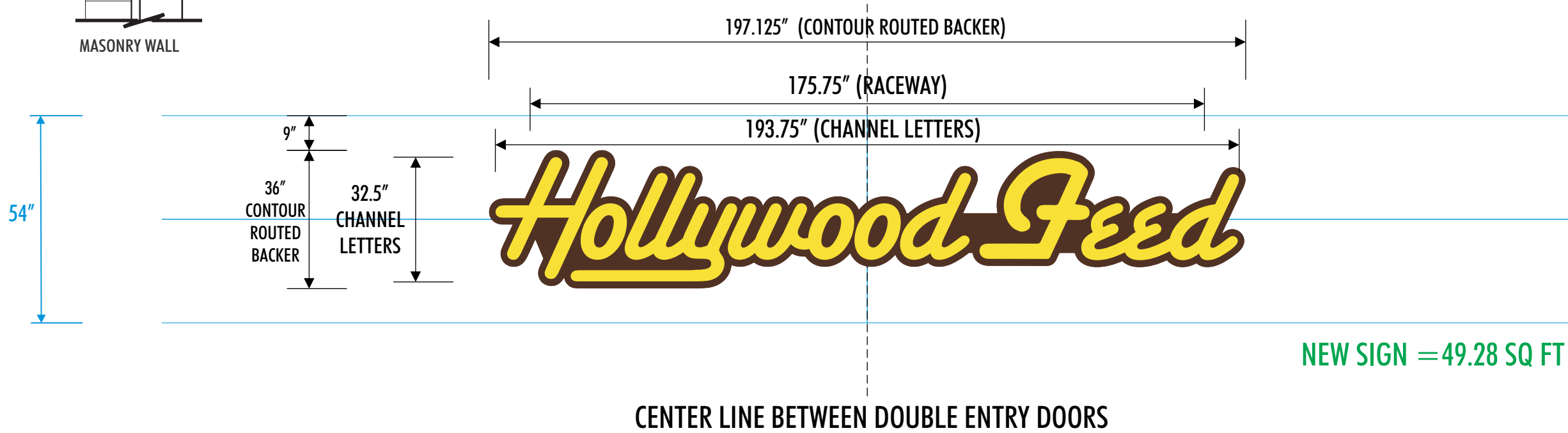
TO SIGN FROM ELECTRICAL SOURCE  
BY QUALIFIED ELECTRICIAN ONLY

SPECIFICATIONS

1. 1" RETAINER CAP
2. 3/16" THICK ACRYLIC FACE ( ACCESS WHEN REMOVED )
3. QWIK MOD 2 (UL APPROVED) WHITE LED MODULES
4. 4" DEEP ALUMINUM PAINTED RETURN
5. 120 VOLT CIRCUIT TO SIGN INSIDE 1/2" UL APPROVED SEALTITE CONDUIT
6. DISCONNECT SWITCH ON LAST LETTER OF LINE OF COPY
7. MOUNTING METHOD VARIES WITH WALL CONDITIONS ( MASONRY LAGS & SHIELDS SHOWN )
8. U.L. APPROVED PASS THROUGH
9. U.L. APPROVED WIRING
10. FULLY ENCLOSED REMOTE MOUNTED JUSTIN, INC. POWER SUPPLY
11. DISCONNECT SWITCH ON OUTSIDE OF UL APPROVED METALLIC TRANSFORMER ENCLOSURE.
12. .090 ALUMINUM CONTOUR BACKER PMS #476 BROWN

ADD PHOTOCELL TO SIDE OF DISCONNECT SWITCH (200-215 120 V)

CHANNEL LETTERS (WHITE ILLUMINATION)		WET LOCATION	
	LED's QWIK MOD 2 WHITE LED POWER SUPPLY BL-120-12-60 POWER SUPPLY		
THIS SIGN IS INTENDED TO BE INSTALLED IN ACCORDANCE WITH REQUIREMENTS OF ARTICLE 600 OF THE NATIONAL ELECTRICAL CODE AND/OR APPLICABLE LOCAL CODES. THIS INCLUDES PROPER GROUNDING & BONDING OF THE SIGN.			



NEW SIGN = 49.28 SQ FT

CENTER LINE BETWEEN DOUBLE ENTRY DOORS

EAST ELEVATION = FRONT LIT FABRICATED NEW CHANNEL LETTERS (WITH CONTOUR DIRECT MOUNT) QUANTITY: 1

SCALE: 3/8" = 1'-0"



Since 1965

5198 NORTH LAKE DRIVE  
LAKE CITY, GA 30260  
404-361-3800  
FAX 404-361-7038  
WWW.CLAYTONSIGNS.COM

3/28/2023

Hollywood Feed

STORE #483  
940 NW PRYOR ROAD, SUITE 6  
LEE'S SUMMIT, MISSOURI 64081

DRAWN BY: BRYANT MARK  
ACCOUNT REP: JIMMY NEWMON  
SCALE: AS INDICATED  
DRAWING FILE NAME  
O:\BM\ Folder H \ Hollywood Feed 483\_  
Lee's Summit Missouri\_3.28.2023\_.cdr

THIS DRAWING IS AN ORIGINAL, UNPUBLISHED DESIGN  
CREATED BY CLAYTON SIGNS, INC. IT IS NOT TO BE  
REPRODUCED, CHANGED, OR EXHIBITED TO ANYONE  
OUTSIDE OF YOUR COMPANY IN WHOLE OR IN PART  
WITHOUT WRITTEN PERMISSION FROM THE OWNER OF  
CLAYTON SIGNS, INC.. ANY SUCH ACTIONS MAY BE  
SUBJECT TO LEGAL ACTION IN A COURT OF LAW.

© 2023 ALL RIGHTS RESERVED