



PELLA

BUILDING SYSTEMS

906 West 9th Street Pella, IA 50219
(800) 225-0481 www.pellabuildings.com

BUILDING LOADS / DESCRIPTION:

WIDTH: 65 LENGTH: 70 HEIGHT: 16.08 /15.88
(BUILDING DIMENSIONS ARE NOMINAL. REFER TO PLANS).

THIS STRUCTURE IS DESIGNED UTILIZING THE LOADS INDICATED
AND APPLIED AS REQUIRED BY : IBC 18

THE CONTRACTOR IS TO CONFIRM THAT THESE LOADS COMPLY
WITH THE REQUIREMENTS OF THE LOCAL BUILDING DEPARTMENT.

ROOF DEAD LOAD: 2.000 PSF (ROOF PANELS & PURLINS)

COLLATERAL LOAD: 0.5 PSF SNOW EXPOSURE: 1.0000

ROOF LIVE LOAD: 20.00 PSF WIND EXPOSURE: C

ROOF SNOW LOAD: 13.44 PSF INTERNAL PRESSURE COEFF.:

GROUND SNOW LOAD: 20 PSF 0.18 / -0.18

BASIC WIND SPEED: 103 MPH SPECTRAL RESPONSE COEFF. MAPPED SPECTRAL RESPONSE ACC.

SEISMIC ZONE: B Sds 0.10 Ss 0.10

THERMAL FACTOR: 1.20 Sd1 0.11 St 0.07

IMPORTANCE FACTORS: DESIGN BASE SHEAR, V:

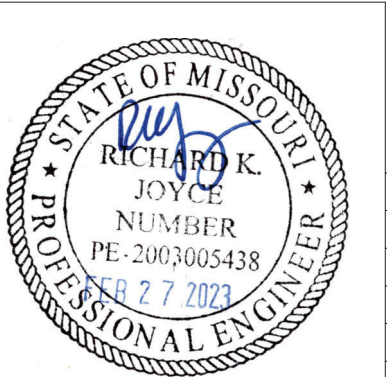
WIND LOAD	1.00	EXPANDED FORMULA	0.667*Ie*Fa*Ss*W/R
SNOW LOAD	0.8000	LONGITUDINAL	0.91
SEISMIC LOAD	1.00	TRANSVERSE	0.89

GENERAL NOTES:

- 1) MATERIALS : MINIMUM YIELD:
- | | | |
|------------------------|-------------|----------|
| HOT ROLLED BAR | Fy = | ksi MIN. |
| STRUCTURAL STEEL SHEET | Fy = | ksi MIN. |
| STRUCTURAL STEEL PLATE | Fy = | ksi MIN. |
| COLD FORMED SHAPES | Fy = | ksi MIN. |
| WALL SHEETING | Fy = | ksi MIN. |
| ROOF SHEETING | Fy = | ksi MIN. |
| BOLTS | A307 & A325 | |
- THE METAL BUILDING MANUFACTURER RESERVES THE RIGHT TO
SUBSTITUTE THE ABOVE MATERIALS WITH EQUAL OR BETTER MATERIAL.

- 2) BOLT TIGHTENING REQUIREMENTS:
- ALL HIGH STRENGTH BOLTS ARE A325 UNLESS NOTED OTHERWISE.
HIGH STRENGTH BOLTS SHALL BE TIGHTENED BY THE TURN OF THE NUT METHOD
IN ACCORDANCE WITH THE LATEST EDITION AISC "SPECIFICATION FOR
STRUCTURAL JOINTS USING ASTM A325 OR A490 BOLTS". A325 BOLTS SHALL BE
INSTALLED WITH OUT WASHERS WHEN TIGHTENED BY THE "TURN OF THE NUT"
METHOD. ALL BOLTED CONNECTIONS, FOR SHEAR/BEARING CONNECTION TYPE
WITH BOLT THREADS EXCLUDED FROM THE SHEAR PLANE SHALL BE SNUG TIGHT
ONLY.

- 3) ALL STRUCTUAL STEEL TO RECEIVE A RUST INHIBITIVE PRIMER. THIS PAINT
IS NOT INTENDED FOR LONG TERM EXPOSURE TO THE ELEMENTS.



ROOF PANELS:

COLOR: Galvalume+ w/ Drip Stop

WALL PANELS:

COLOR: NEED SIG 200

TRIM COLORS:

CABLE: NEED SIG 200

CORNER: NEED SIG 200

EAVE: NEED SIG 200

FRAMED OPENINGS: NEED SIG 200

LINER PANELS:

COLOR: N/A

LINER TRIM:

COLOR: N/A

DEFLECTION LIMITS:

EW COL:	180
EW RAF LIVE:	180
EW RAF WIND:	180
WALL GIRT:	90
PURL LIVE:	180
PURL WIND:	150
WALL PANEL:	60
ROOF PANEL LIVE:	60
ROOF PANEL WIND:	60
RF HORIZONTAL:	180
RF VERTICAL:	60
WIND BENT:	60
RF CRANE:	0
RF SEIS:	0
WIND BENT SEIS:	0

BUILDER / CONTRACTOR RESPONSIBILITIES

IT IS THE RESPONSIBILITY OF THE BUILDER/CONTRACTOR TO INSURE THAT ALL PROJECT
PLANS AND SPECIFICATIONS COMPLY WITH THE APPLICABLE REQUIREMENTS OF ANY
GOVERNING BUILDING AUTHORITIES. THE SUPPLYING OF SEALED ENGINEERING DATA AND
DRAWINGS FOR THE METAL BUILDING SYSTEM DOES NOT IMPLY OR CONSTITUTE AN
AGREEMENT THAT THE METAL BUILDING SYSTEM MANUFACTURER OR ITS DESIGN ENGINEER
IS ACTING AS THE ENGINEER OF RECORD OR DESIGN PROFESSIONAL FOR A CONSTRUCTION
PROJECT.

THE CONTRACTOR MUST SECURE ALL REQUIRED APPROVALS AND PERMITS FROM THE
APPROPRIATE AGENCY AS REQUIRED. APPROVAL OF THE METAL BUILDING SYSTEM
MANUFACTURER'S DRAWINGS AND CALCULATIONS INDICATE THAT THE METAL BUILDING
SYSTEM MANUFACTURER CORRECTLY INTERPRETED AND APPLIED THE REQUIREMENTS OF THE
CONTRACT DRAWINGS AND SPECIFICATIONS. (SECT. 4.2.1 AISC CODE OF STANDARD
PRACTICES, 9TH ED.) WHERE DISCREPANCIES EXIST BETWEEN THE METAL BUILDING SYSTEM
MANUFACTURER'S STRUCTURAL STEEL PLANS AND THE PLANS FOR OTHER TRADES, THE
STRUCTURAL STEEL PLANS SHALL GOVERN. (SECT. 3.3 AISC CODE OF STANDARD PRACTICE
9TH ED.)

DESIGN CONSIDERATIONS OF ANY MATERIALS IN THE STRUCTURE WHICH ARE NOT
FURNISHED BY THE METAL BUILDING SYSTEM MANUFACTURER ARE THE RESPONSIBILITY OF
THE CONTRACTORS AND ENGINEERS OTHER THAN THE METAL BUILDING SYSTEM
MANUFACTURER'S ENGINEER UNLESS SPECIFICALLY INDICATED.

THE CONTRACTOR IS RESPONSIBLE FOR ALL ERECTION OF STEEL AND ASSOCIATED WORK
IN COMPLIANCE WITH THE METAL BUILDING SYSTEM MANUFACTURER "FOR CONSTRUCTION"
DRAWINGS.

ALL BRACING AS SHOWN AND PROVIDED BY THE METAL BUILDING SYSTEM
MANUFACTURER FOR THIS BUILDING IS REQUIRED AND SHALL BE INSTALLED BY THE
ERECTOR AS A PERMANENT PART OF THE STRUCTURE.

TEMPORARY SUPPORTS, SUCH AS TEMPORARY GUYS, BRACES, FALSE WORK, CRIBBING
OR OTHER ELEMENTS REQUIRED FOR THE ERECTION OPERATION WILL BE DETERMINED AND
FURNISHED AND INSTALLED BY THE ERECTOR. THESE TEMPORARY SUPPORTS WILL SECURE
THE STEEL FRAMING, OR ANY PARTLY ASSEMBLED STEEL FRAMING, AGAINST LOADS
COMPARABLE IN INTENSITY TO THOSE FOR WHICH THE STRUCTURE WAS DESIGNED,
RESULTING FROM WIND, SEISMIC FORCES AND ERECTION OPERATIONS, BUT NOT THE LOADS
RESULTING FROM THE PERFORMANCE OF WORK BY OR THE ACTS OF OTHERS, NOR SUCH
UNPREDICTABLE LOADS AS THOSE DUE TO TORNADO, EXPLOSION, OR COLLISION. (SECT.
7.9.1 AISC CODE OF STANDARD PRACTICE, 9TH ED.)

WARNING: IN NO CASE SHOULD GALVALUME STEEL PANELS BE USED IN CONJUNCTION
WITH LEAD OR COPPER. BOTH LEAD AND COPPER HAVE HARMFUL CORROSION EFFECTS ON
THE ALUMINUM ZINC ALLOY COATING WHEN THEY ARE USED IN CONTACT WITH GALVALUME
STEEL PANELS. EVEN RUN-OFF FROM COPPER FLASHING, WIRING, OR TUBING ONTO
GALVALUME SHOULD BE AVOIDED.

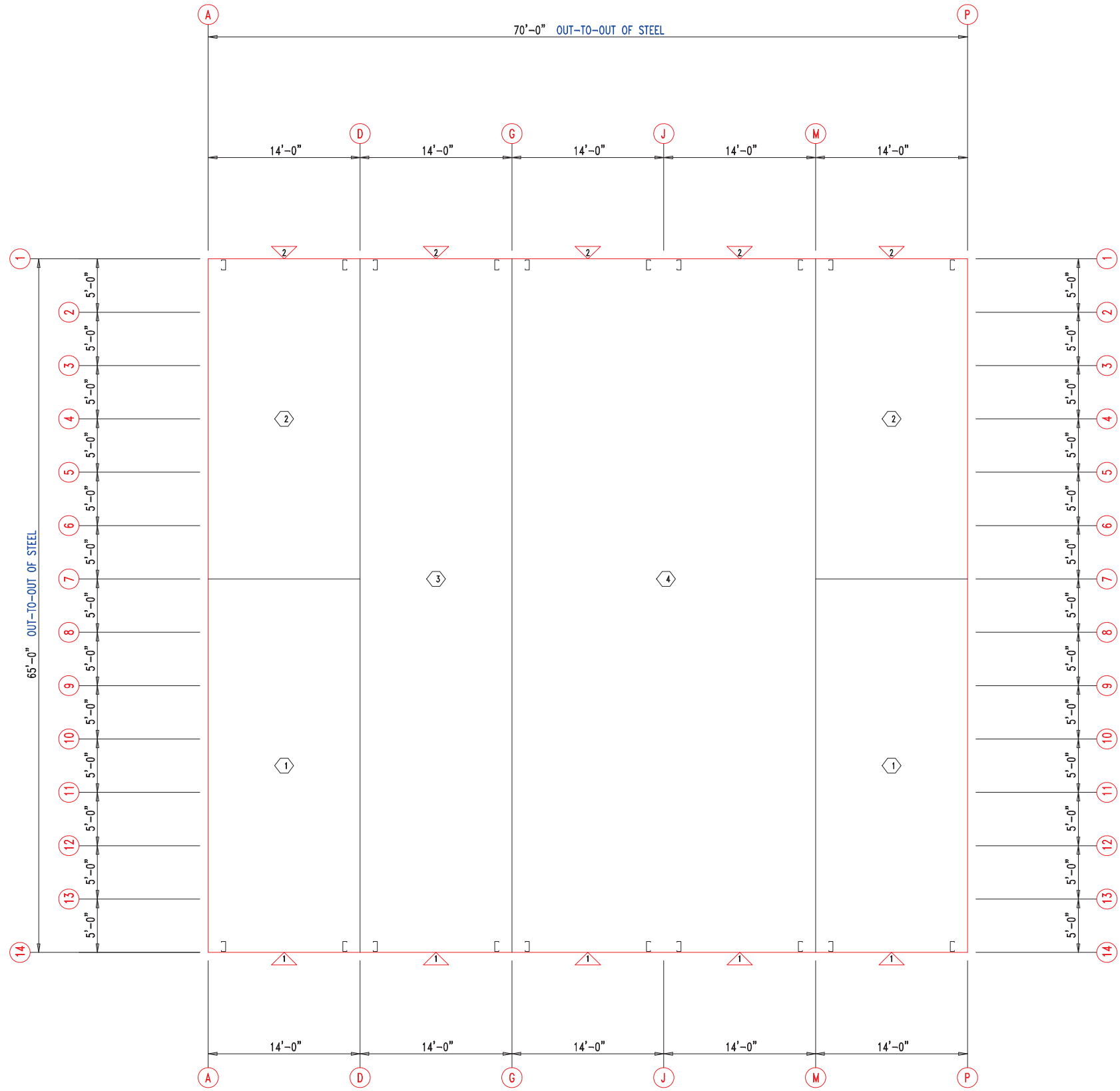
APPROVAL NOTES

THE FOLLOWING CONDITIONS APPLY IN THE EVENT THAT THESE DRAWINGS ARE USED AS
APPROVAL DRAWINGS: IT IS IMPERATIVE THAT ANY CHANGES TO THESE DRAWINGS BE MADE
IN CONTRASTING INK (PREFERABLY RED INK), HAVE ALL INSTANCES OF CHANGE CLEARLY
INDICATED, AND BE LEGIBLE AND UNAMBIGUOUS. A SIGNATURE AND DATE IS REQUIRED ON
ALL PAGES. MANUFACTURER RESERVES THE RIGHT TO RE-SUBMIT DRAWINGS WITH
EXTENSIVE OR COMPLEX CHANGES REQUIRED TO AVOID MISFABRICATION. THIS MAY IMPACT
THE DELIVERY SCHEDULE. APPROVAL OF THESE DRAWINGS INDICATES CONCLUSIVELY THAT
THE METAL BUILDING SYSTEM MANUFAACTURER HAS CORRECTLY INTERPRETED THE
CONTRACT REQUIREMENTS, AND FURTHER CONSTITUTES AGREEMENT THAT THE BUILDING AS
DRAWN WITH INDICATED CHANGES REPRESENTS THE TOTAL OF THE MATERIALS TO BE
SUPPLIED BY MANUFACTURER. ANY CHANGES NOTED ON THHE DRAWINGS NOT IN
COMFORMANCE WITH THE TERMS AND REQUIREMENTS OF THE CONTRACT BETWEEN
MANUFACTURER AND ITS CUSTOMER ARE NOT BINDING ON MANUFACTURER UNLESS
SUBSEQUENTLY SPECIFICALLY ACKNOWLEDGED AND AGREED TO IN WRITING BY CHANGE
ORDER OR SEPARATE DOCUMENTATION. MANUFACTURER RECONGNIZES THAT RUBBER
STAMPS ARE ROUTINELY USED FOR INDICATING APPROVAL, DISAPPROVAL, REJECTION, OR
MERE REVIEW OF THE DRAWINGS SUBMITTED. HOWEVER, MANUFACTURER DOES NOT ACCEPT
CHANGES OR ADDITIONS TO CONTRACTURAL TERMS AND CONDITIONS THAT MAY APPEAR
WITH USE OF A STAMP OR SIMILIAR INDICATIOIN OF APPROVAL, DISAPPROVAL, ETC. SUCH
LANGUAGE APPLIED TO MANUFACTURER'S DRAWINGS BY THE CUSTOMER, ARCHITECT,
ENGINEER, OR ANY OTHER PARTY WILL BE CONSIDERED AS UNACCEPTABLE ALTERNATIONS
TO THESE DRAWING NOTES, AND WILL NOT ALTER THE CONTRACTUAL RIGHTS AND
OBLIGATIONS EXISTING BETWEEN MANUFACTURER AND ITS CUSTOMER.

IMPORTANT NOTE: FINAL DETAILING, FABRICATION, AND DELIVERY DATE OF THIS PROJECT
CANNOT BE COMPLETED UNTIL THE SIGNED APPROVALS ARE RETURNED TO THE METAL
BUILDING MANUFACTURER.

△		
△		
△		
B	../..../.	FOR CONSTRUCTION
A	../..../.	FOR APPROVAL
REV.	DATE	REVISION

PURCHASER: MEGA Storage
PROJECT: LEES SUMMIT
JOB NUMBER: L




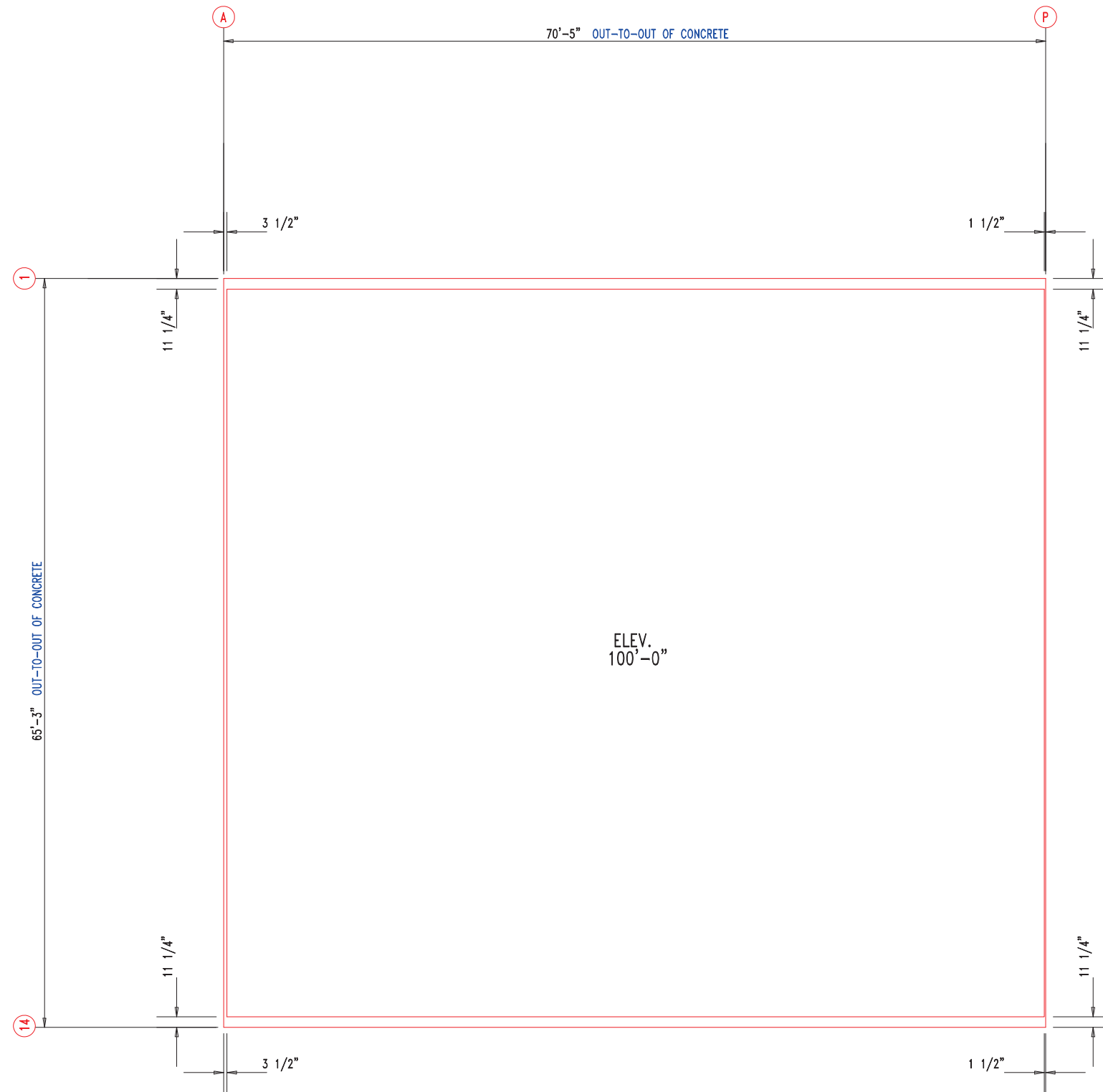
FLOOR PLAN

DOOR SCHEDULE			
▽ ID	QUAN	DESCRIPTION	COLOR
1	5	Janus 1214 M1950 Rollup	
2	5	Janus 1214 M1950 Rollup	

COMPARTMENT TABLE			
◇ ID	QUAN	WIDTH	LENGTH
1	2	14'-0"	35'-0"
2	2	14'-0"	30'-0"
3	1	14'-0"	65'-0"
4	1	28'-0"	65'-0"




 <div>906 West 9th Street Pella, IA 50219 (800) 225-0481 www.pellabuildings.com</div>	DESCRIPTION: FLOOR PLAN					
	CUSTOMER: MEGA Storage				PROJECT: LEE'S SUMMIT	
	LOCATION: LEE'S SUMMIT MO					
	DRN. BY JB	CK'D BY	DATE 8/23/22	SCALE N.T.S.	REV. 00	QUOTATION NO. L

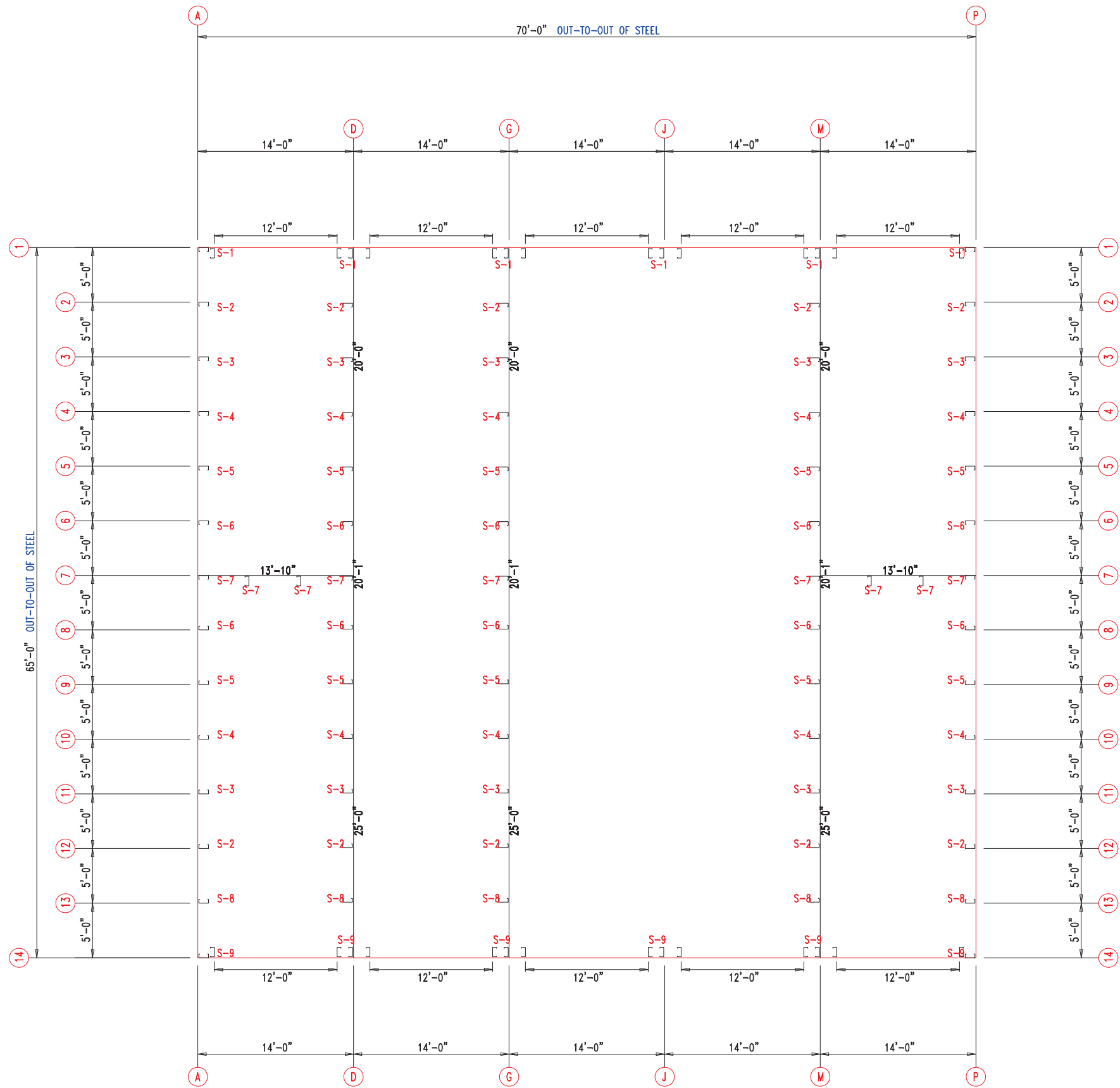


ANCHOR PLAN




 <div>PELLA BUILDING SYSTEMS</div> <div>906 West 9th Street Pella, IA 50219 (800) 225-0481 www.pellabuildings.com</div>		DESCRIPTION: ANCHOR PLAN							
		CUSTOMER: MEGA Storage					PROJECT: LEE'S SUMMIT		
		LOCATION: LEE'S SUMMIT MO							
		DRN. BY JB	CK'D BY	DATE 8/23/22	SCALE N.T.S.	REV. 00	QUOTATION NO. L	SHEET NO. 2 OF 14	

MEMBER TABLE		
MARK	PART	LENGTH
S-1	6X2C16	16'-2 1/2"
S-2	6X2C16	16'-3 1/2"
S-3	6X2C16	16'-6"
S-4	6X2C16	16'-8 1/2"
S-5	6X2C16	16'-11"
S-6	6X2C16	17'-1 1/2"
S-7	6X2C16	17'-4"
S-8	6X2C16	16'-1"
S-9	6X2C16	16'-0"



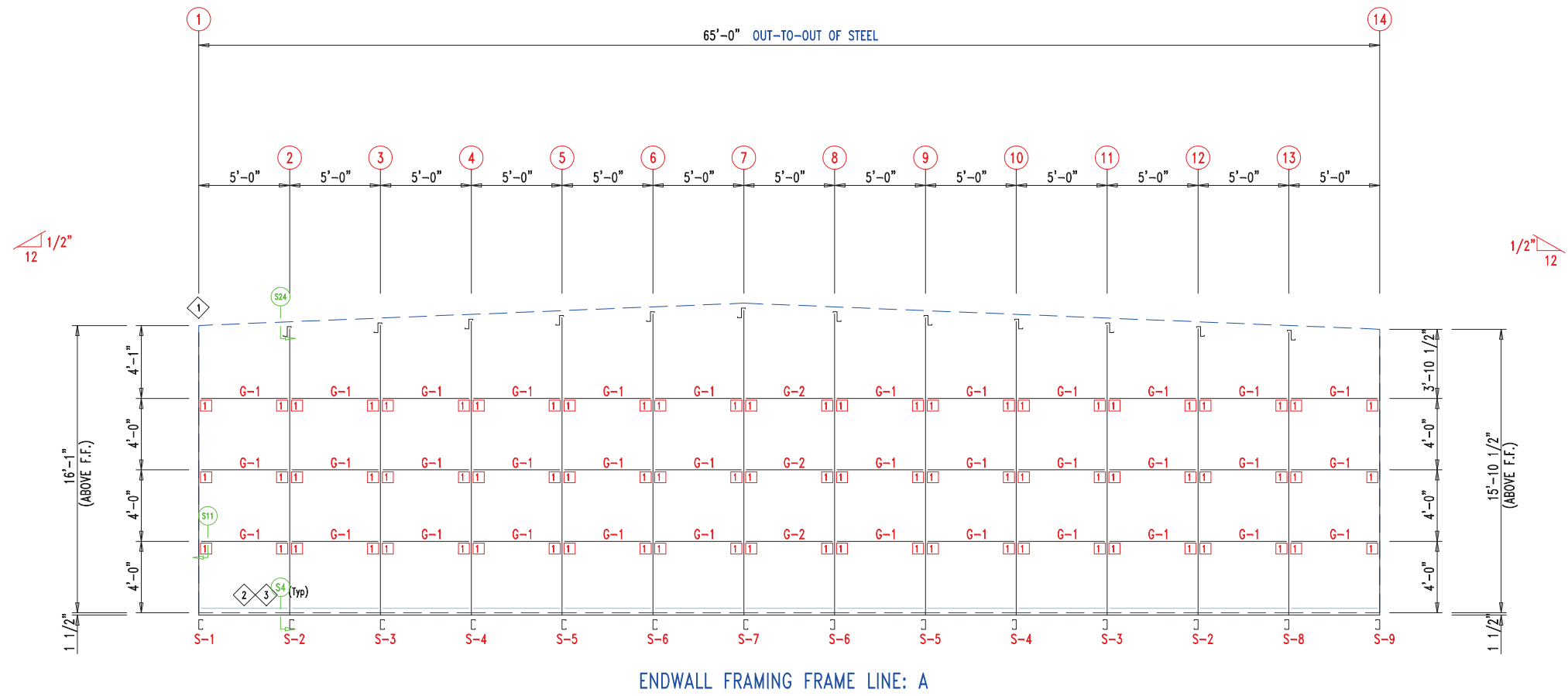
FLOOR PLAN



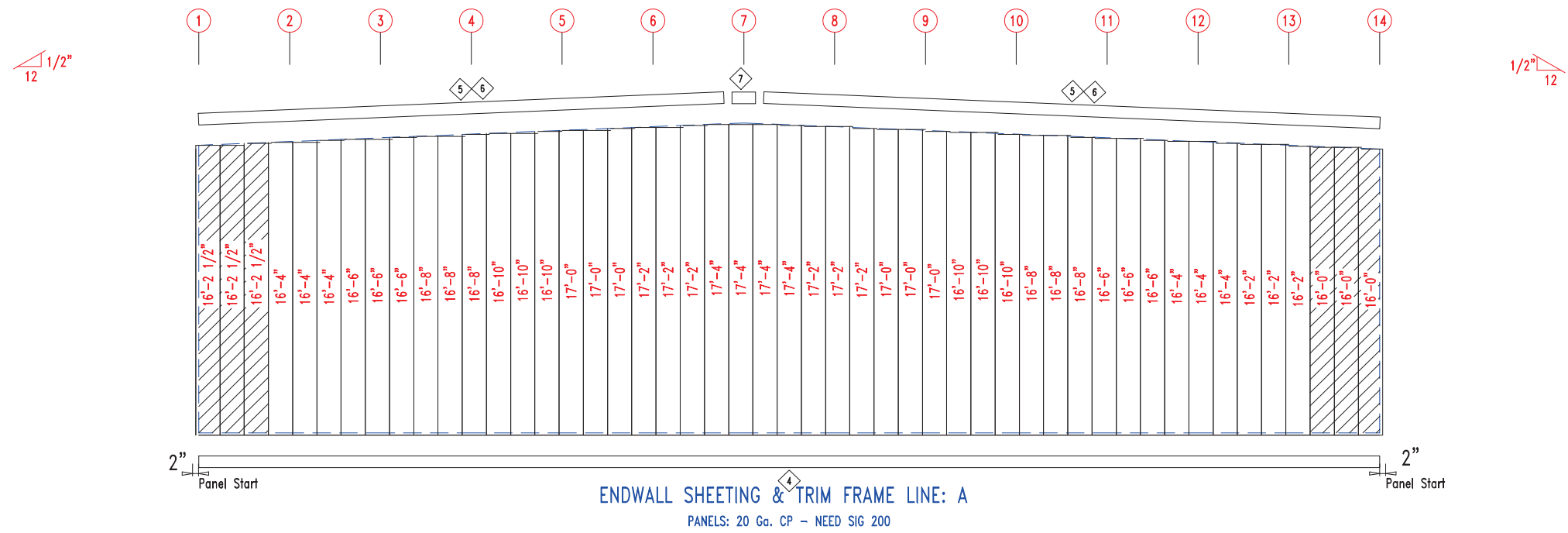
906 West 9th Street Pella, IA 50219
(800) 225-0481 www.pellabuildings.com

DESCRIPTION: FLOOR PLAN					
CUSTOMER: MEGA Storage			PROJECT: LEE'S SUMMIT		
LOCATION: LEE'S SUMMIT MO					
DRN. BY JB	CK'D BY	DATE 8/23/22	SCALE N.T.S.	REV. 00	QUOTATION NO. L
			SHEET NO. 3 OF 14		





ENDWALL FRAMING FRAME LINE: A



ENDWALL SHEETING & TRIM FRAME LINE: A
PANELS: 20 Ga. CP - NEED SIG 200


TRIM TABLE			
◇ ID	PART	LENGTH	DETAIL
4	PBDT-1.5	10'-2"	TRIM_229
5	FL16D	15'-4"	
6	FL16D	17'-10"	
7	FL16B	1'-4"	TRIM_229

MEMBER TABLE		
MARK	PART	LENGTH
S-1	6X2C16	16'-2 1/2"
S-2	6X2C16	16'-3 1/2"
S-3	6X2C16	16'-6"
S-4	6X2C16	16'-8 1/2"
S-5	6X2C16	16'-11"
S-6	6X2C16	17'-1 1/2"
S-7	6X2C16	17'-4"
S-8	6X2C16	16'-1"
S-9	6X2C16	16'-0"
G-1	6X2C16	4'-9 1/2"
G-2	6X2C16	4'-7 1/2"

ANGLE TABLE		
◇ ID	MARK	LENGTH
1	L3x3	20'-0"
2	PB6EC	20'-0"
3	PB6EC	SCRAP

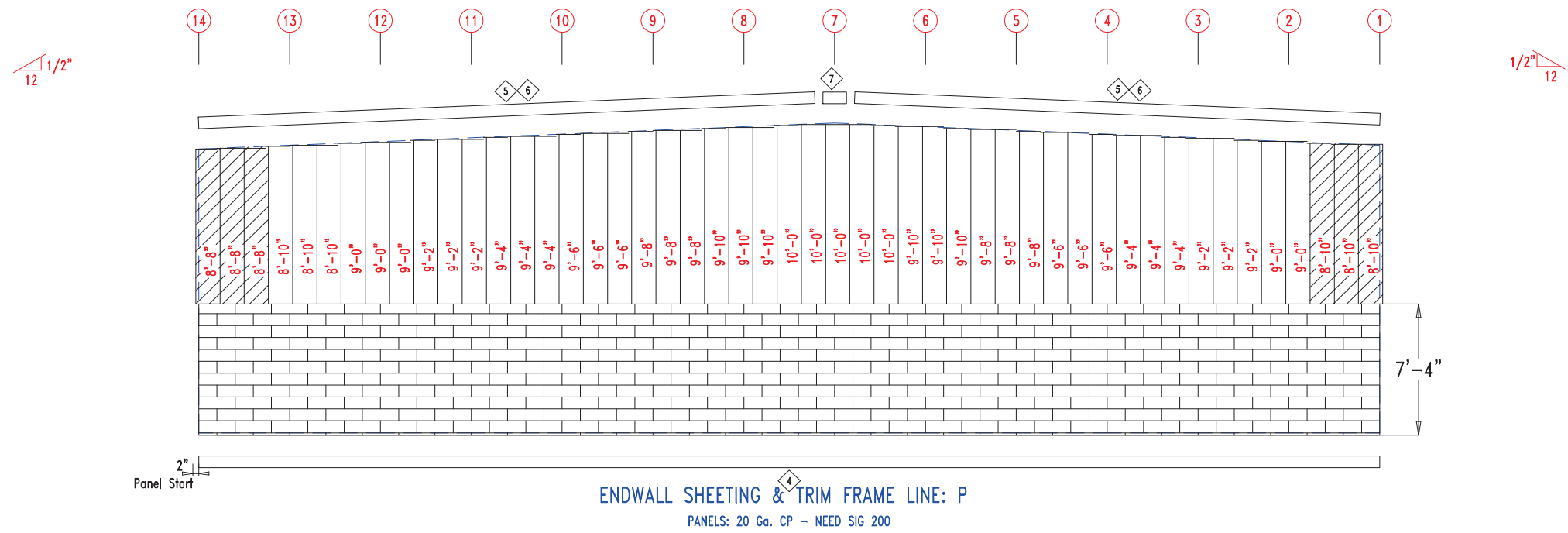
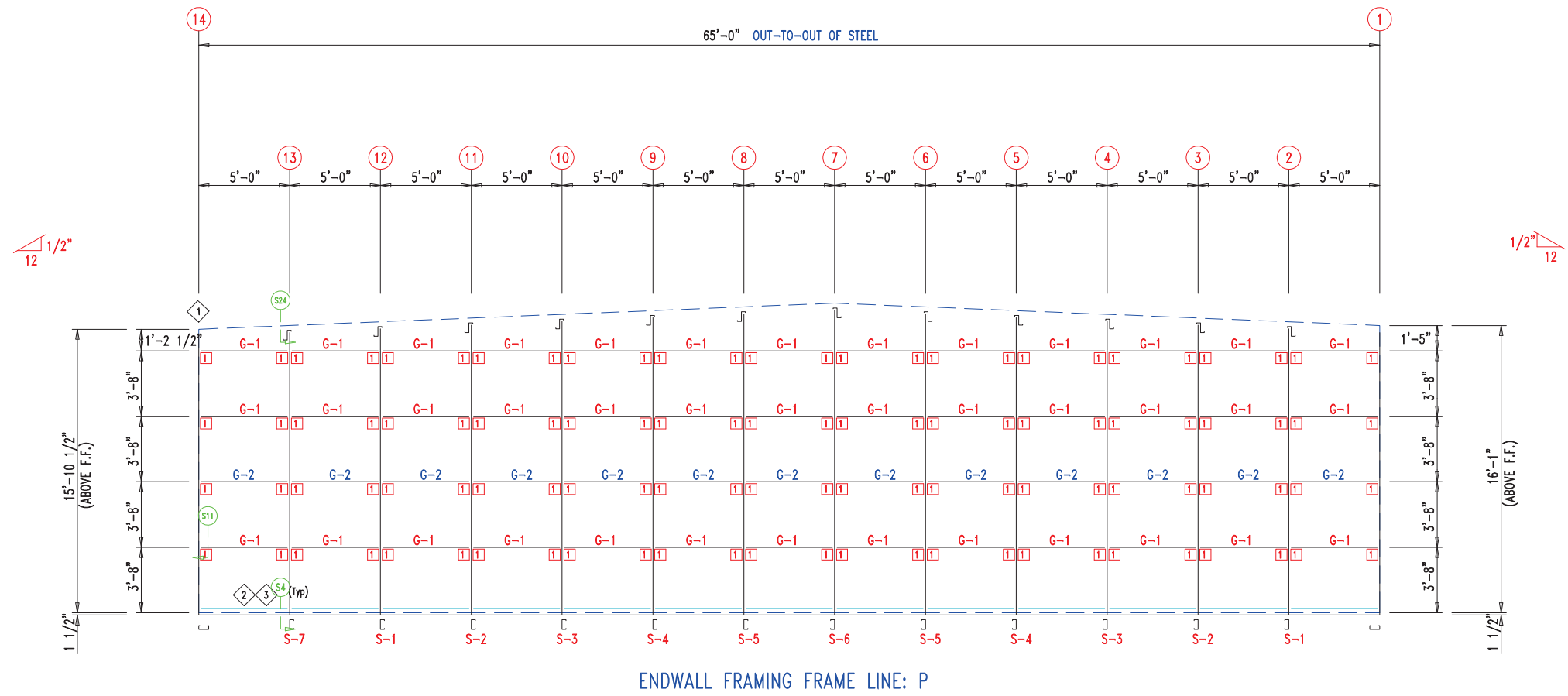
CONNECTION PLATES	
□ ID	MARK/PART
1	PBMC-6





906 West 9th Street Pella, IA 50219
(800) 225-0481 www.pellabuildings.com

DESCRIPTION: ENDWALL DRAWING					
CUSTOMER: MEGA Storage			PROJECT: LEE'S SUMMIT		
LOCATION: LEE'S SUMMIT MO					
DRN. BY JB	CK'D BY	DATE 8/23/22	SCALE N.T.S.	REV. 00	QUOTATION NO. L
				SHEET NO. 4 OF 14	




TRIM TABLE			
◇ ID	PART	LENGTH	DETAIL
4	PBDT-1.5	10'-2"	TRIM_229
5	FL16D	15'-4"	
6	FL16D	17'-10"	
7	FL16B	1'-4"	TRIM_229

MEMBER TABLE		
MARK	PART	LENGTH
S-1	6X2C16	16'-3 1/2"
S-2	6X2C16	16'-6"
S-3	6X2C16	16'-8 1/2"
S-4	6X2C16	16'-11"
S-5	6X2C16	17'-1 1/2"
S-6	6X2C16	17'-4"
S-7	6X2C16	16'-1"
G-1	6X2C16	4'-9 1/2"
G-2	6X3C16	4'-9 1/2"

ANGLE TABLE		
◇ ID	MARK	LENGTH
1	L3x3	20'-0"
2	PB6EC	20'-0"
3	PB6EC	SCRAP

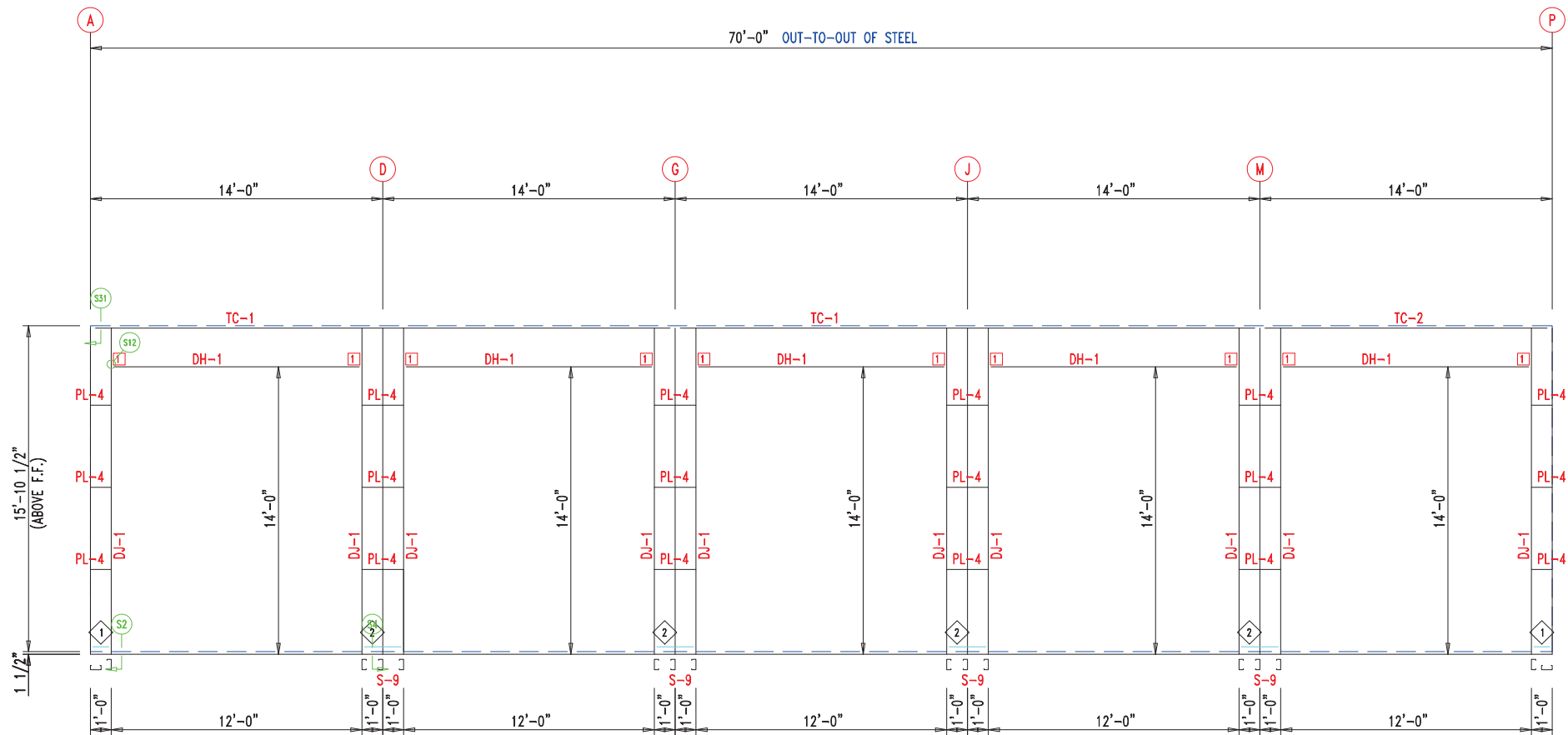
CONNECTION PLATES		
□ ID	MARK/PART	
1	PBMC-6	



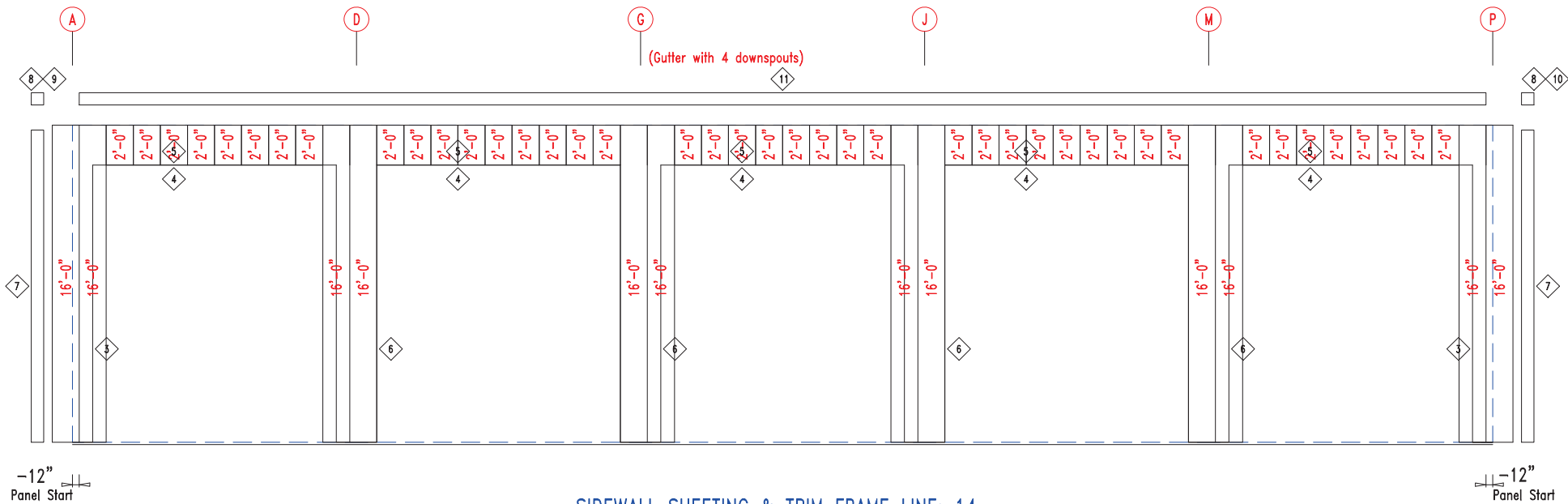


906 West 9th Street Pella, IA 50219
(800) 225-0481 www.pellabuildings.com

DESCRIPTION: ENDWALL DRAWING			
CUSTOMER: MEGA Storage		PROJECT: LEES SUMMIT	
LOCATION: LEE'S SUMMIT MO			
DRN. BY JB	CK'D BY	DATE 9/ 1/22	SCALE N.T.S.
REV. 00	QUOTATION NO. L	SHEET NO. 5 OF 14	



SIDEWALL FRAMING FRAME LINE: 14



SIDEWALL SHEETING & TRIM FRAME LINE: 14
PANELS: 20 Ga. CP - NEED SIG 200

TRIM TABLE			
ID	PART	LENGTH	DETAIL
3	PB6SM-12	14'-1"	TRIM_235
4	PB6HT-6	12'-1"	
5	XFL26	20'-2"	
6	PB6M-24	14'-1"	TRIM_198
7	FL835x	16'-0"	
8	FL16C	6"	
9	FL18AL	6"	TRIM_317
10	FL18AR	6"	
11	FL19	10'-2"	


MEMBER TABLE		
MARK	PART	LENGTH
S-9	6X2C16	16'-0"
DJ-1	PBMJ6	16'-0"
TC-1	PB6EC	28'-0"
TC-2	PB6EC	14'-0"
DH-1	6X25C16	11'-11 1/2"
PL-4	2" Plate	20"

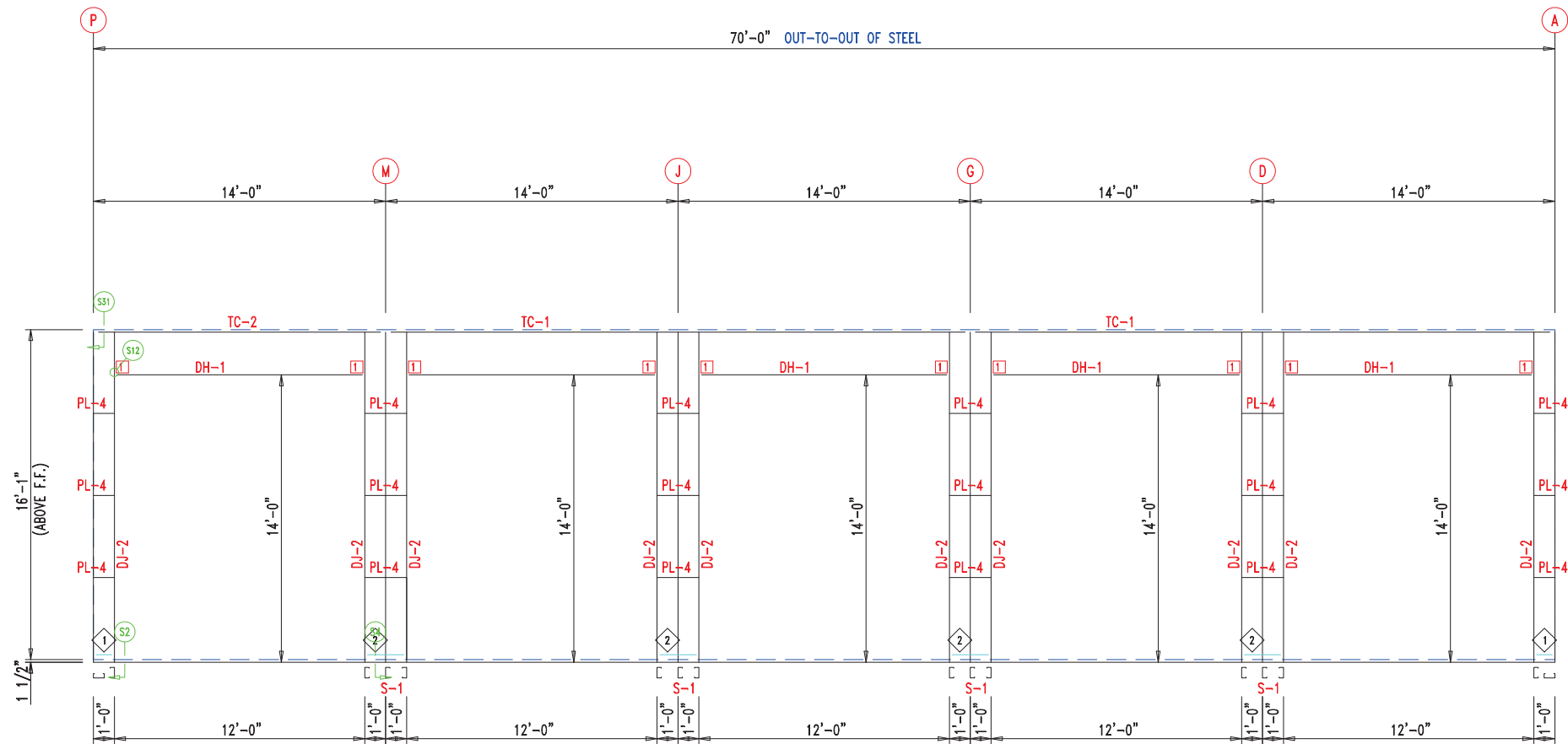
ANGLE TABLE		
ID	MARK	LENGTH
1	PB6BC1	11 3/4"
2	PB6BC2	1'-11 3/4"

CONNECTION PLATES

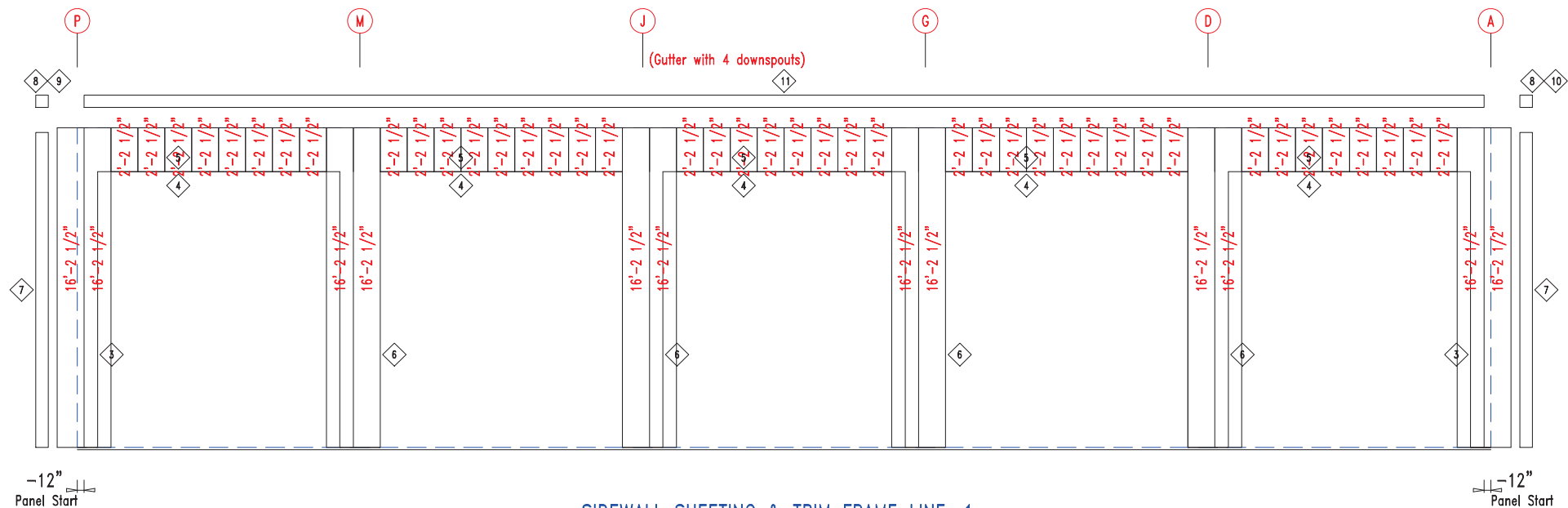
ID	MARK/PART
1	PBMC-6



 906 West 9th Street Pella, IA 50219 (800) 225-0481 www.pellabuildings.com		DESCRIPTION: SIDEWALL DRAWING	
		CUSTOMER: MEGA Storage	PROJECT: LEE'S SUMMIT
LOCATION: LEE'S SUMMIT MO			
DRN. BY JB	CK'D BY	DATE 8/23/22	SCALE N.T.S.
REV. 00	QUOTATION NO. L	SHEET NO. 6 OF 14	



SIDEWALL FRAMING FRAME LINE: 1



SIDEWALL SHEETING & TRIM FRAME LINE: 1

PANELS: 20 Ga. CP - NEED SIG 200


TRIM TABLE			
ID	PART	LENGTH	DETAIL
3	PB6SM-12	14'-1"	TRIM_235
4	PB6HT-6	12'-1"	
5	XFL26	20'-2"	
6	PB6M-24	14'-1"	TRIM_198
7	FL835x	16'-3"	
8	FL16C	6"	
9	FL18AL	6"	TRIM_317
10	FL18AR	6"	
11	FL19	10'-2"	

MEMBER TABLE		
MARK	PART	LENGTH
S-1	6X2C16	16'-2 1/2"
DJ-2	PBMJ6	16'-2 1/2"
TC-1	PB6EC	28'-0"
TC-2	PB6EC	14'-0"
DH-1	6X25C16	11'-11 1/2"
PL-4	2" Plate	20"

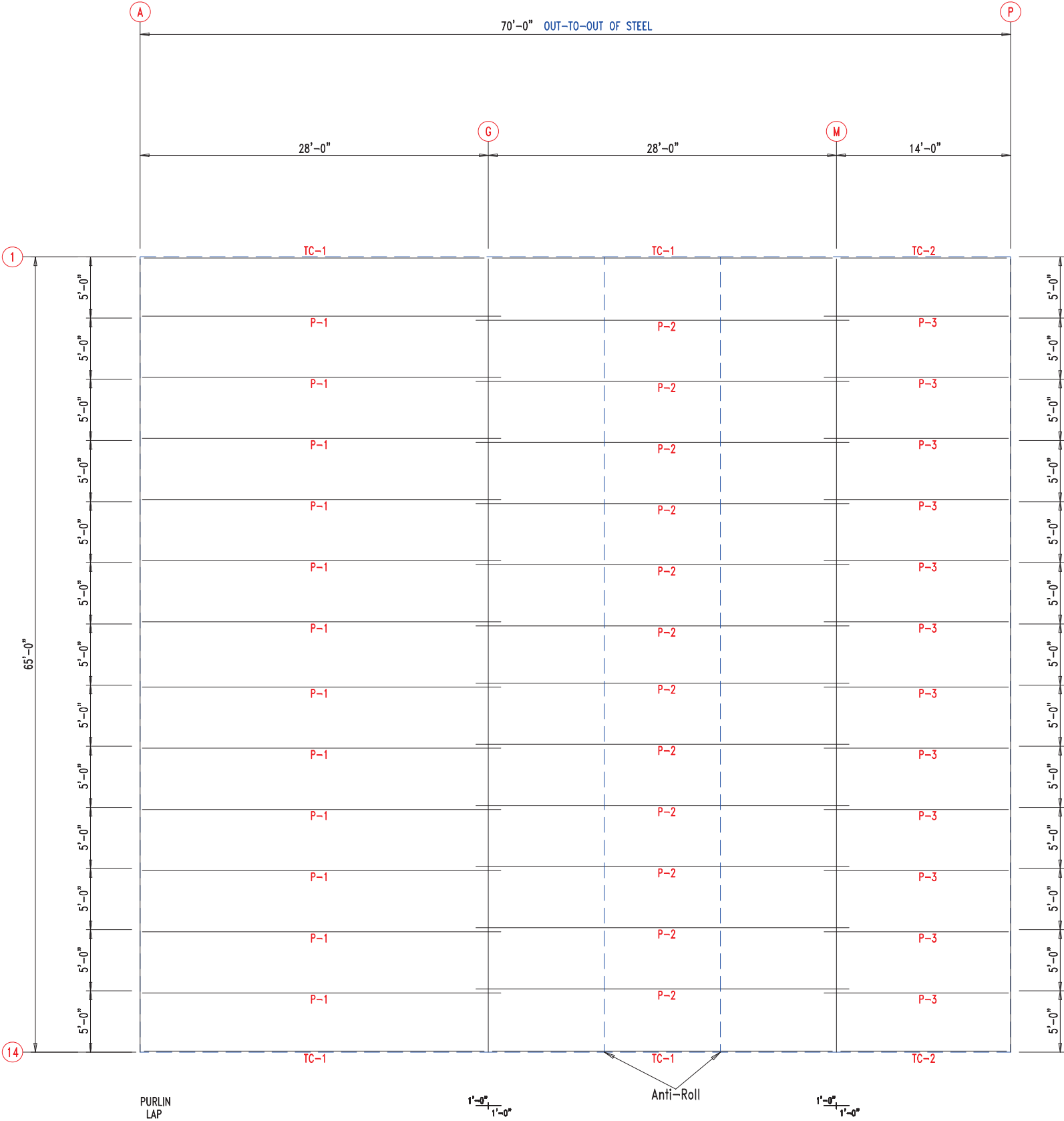
ANGLE TABLE		
ID	MARK	LENGTH
1	PB6BC1	11 3/4"
2	PB6BC2	1'-11 3/4"


CONNECTION PLATES	
ID	MARK/PART
1	PBMC-6



 906 West 9th Street Pella, IA 50219 (800) 225-0481 www.pellabuildings.com		DESCRIPTION: SIDEWALL DRAWING	
		CUSTOMER: MEGA Storage	PROJECT: LEE'S SUMMIT
LOCATION: LEE'S SUMMIT MO			
DRN. BY JB	CK'D BY	DATE 8/23/22	SCALE N.T.S.
REV. 00	QUOTATION NO. L	SHEET NO. 7 OF 14	

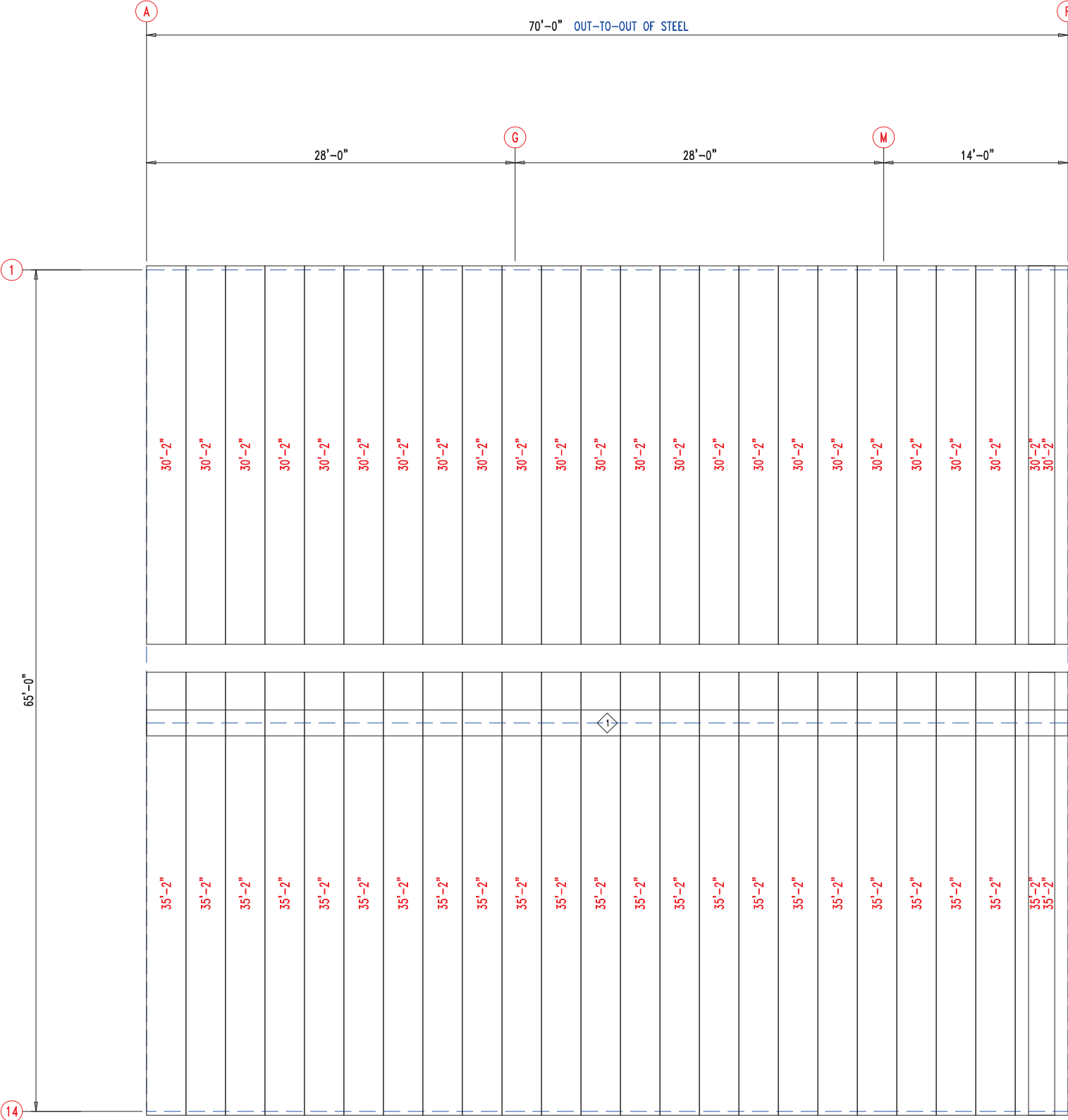
MEMBER TABLE		
MARK	PART	LENGTH
TC-1	PB6EC	28'-0"
TC-2	PB6EC	14'-0"
P-1	6X25Z14	30'-0"
P-2	12X25Z12	33'-0"
P-3	6X25Z14	15'-0"





906 West 9th Street Pella, IA 50219
(800) 225-0481 www.pellabuildings.com


DESCRIPTION:		ROOF FRAMING			
CUSTOMER:		MEGA Storage		PROJECT: LEE'S SUMMIT	
LOCATION:		LEE'S SUMMIT MO			
DRN. BY	CK'D BY	DATE	SCALE	REV.	QUOTATION NO.
JB		8/23/22	N.T.S.	00	L
				SHEET NO.	8 OF 14

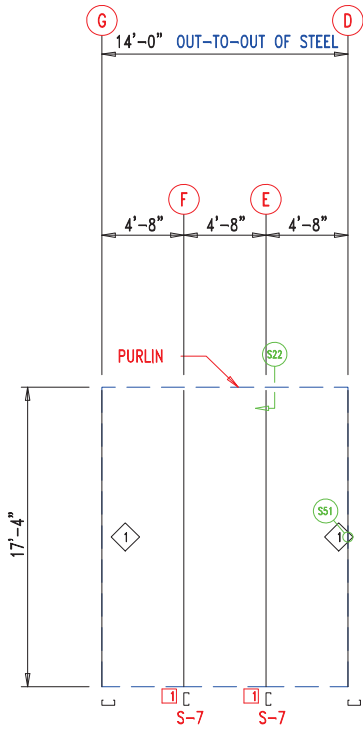


TRIM TABLE			
◇ ID	PART	LENGTH	DETAIL
1	FL49	3'-0"	TRIM_320

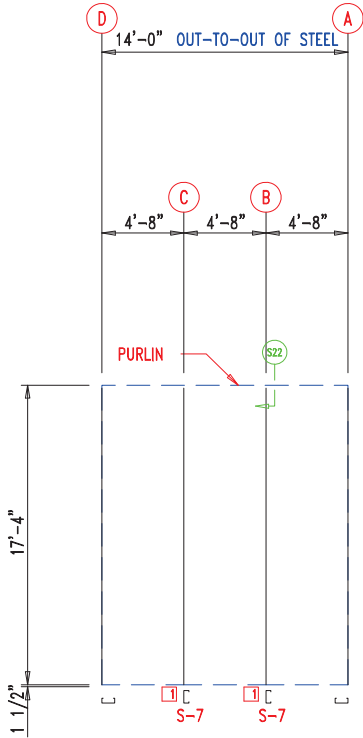
ROOF SHEETING & TRIM
PANELS: 26 Ga. PR - Galvalume+ w/ Drip Stop



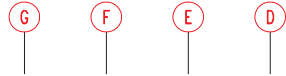
 906 West 9th Street Pella, IA 50219 (800) 225-0481 www.pellabuildings.com	DESCRIPTION: ROOF SHEETING						
	CUSTOMER: MEGA Storage				PROJECT: LEE'S SUMMIT		
	LOCATION: LEE'S SUMMIT MO						
	DRN. BY JB	CK'D BY	DATE 8/23/22	SCALE N.T.S.	REV. 00	QUOTATION NO. L	SHEET NO. 9 OF 14



WALL FRAMING
FRAME LINE: 7 (Typ of 4)
GRID LINES: (D-P)

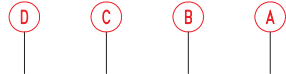


WALL FRAMING
FRAME LINE: 7



13'-10"
13'-10"
13'-10"
13'-10"
13'-10"
13'-10"

WALL SHEETING & TRIM
FRAME LINE: 7 (Typ of 4)
GRID LINES: (D-P)
PANELS: 29 Ga. PR - Galvalume +



13'-10"
13'-10"
13'-10"
13'-10"
13'-10"
13'-10"


WALL SHEETING & TRIM
FRAME LINE: 7
PANELS: 29 Ga. PR - Galvalume +

MEMBER TABLE		
MARK	PART	LENGTH
S-7	6X2C16	17'-4"

ANGLE TABLE		
◇ ID	MARK	LENGTH
1	STUD	10'-0"

CONNECTION PLATES		
□ ID	MARK/PART	
1	BASECLIP	

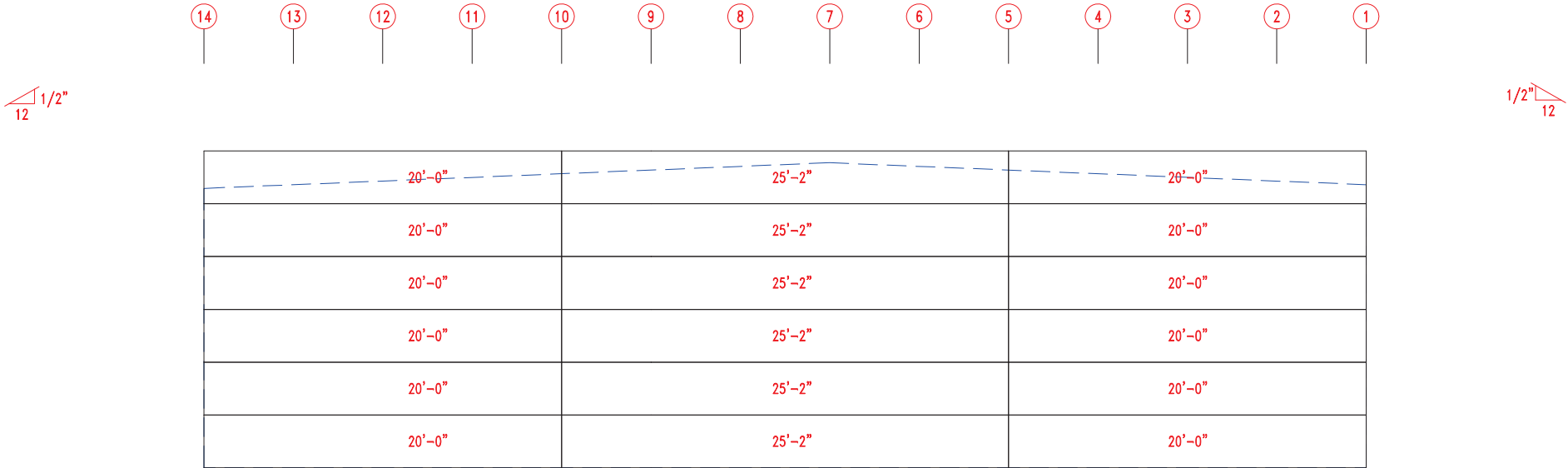
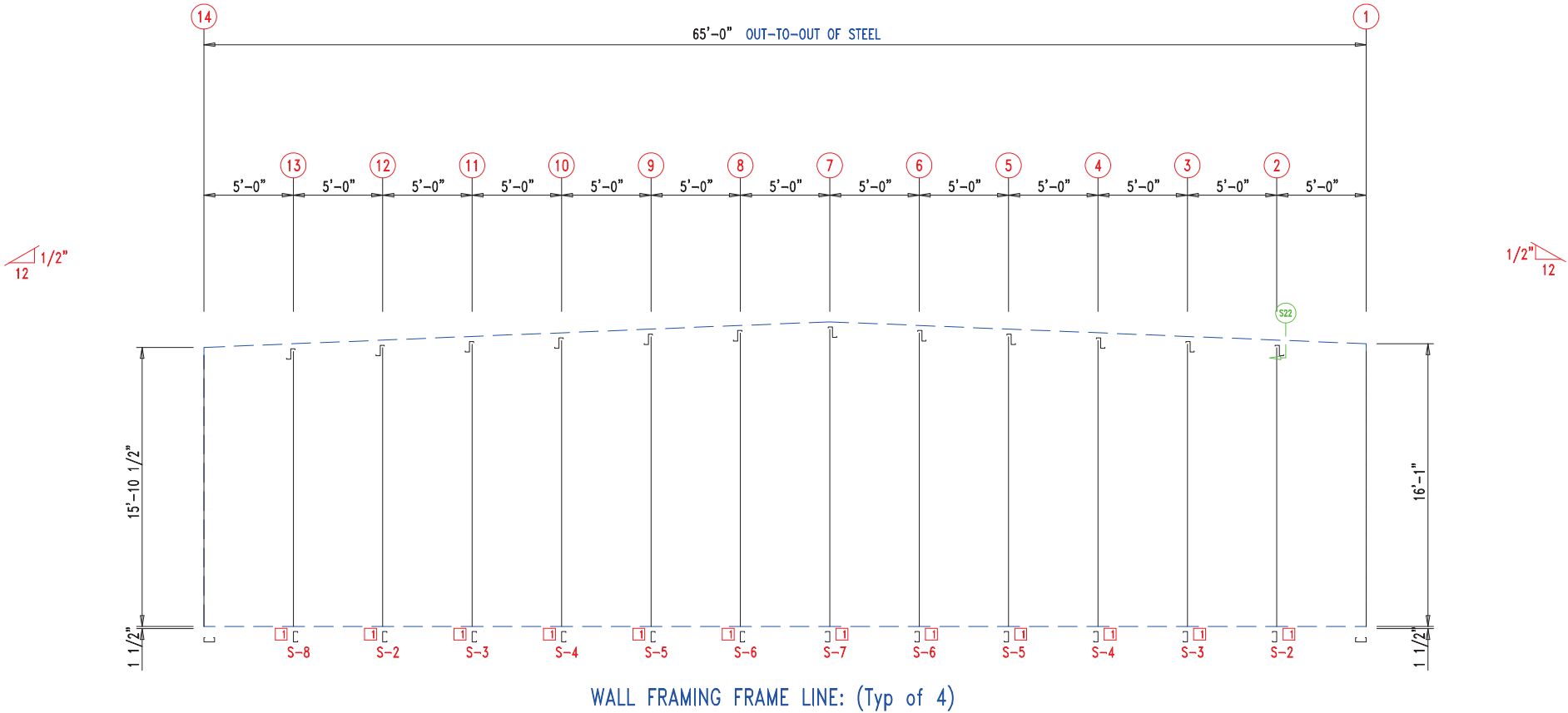


 906 West 9th Street Pella, IA 50219 (800) 225-0481 www.pellabuildings.com		DESCRIPTION: PARTITION DRAWING	
		CUSTOMER: MEGA Storage	PROJECT: LEE'S SUMMIT
LOCATION: LEE'S SUMMIT MO			
DRN. BY JB	CK'D BY	DATE 8/23/22	SCALE N.T.S.
REV. 00	QUOTATION NO. L	SHEET NO. 10 OF 14	

MEMBER TABLE		
MARK	PART	LENGTH
S-2	6X2C16	16'-3 1/2"
S-3	6X2C16	16'-6"
S-4	6X2C16	16'-8 1/2"
S-5	6X2C16	16'-11"
S-6	6X2C16	17'-1 1/2"
S-7	6X2C16	17'-4"
S-8	6X2C16	16'-1"


CONNECTION PLATES

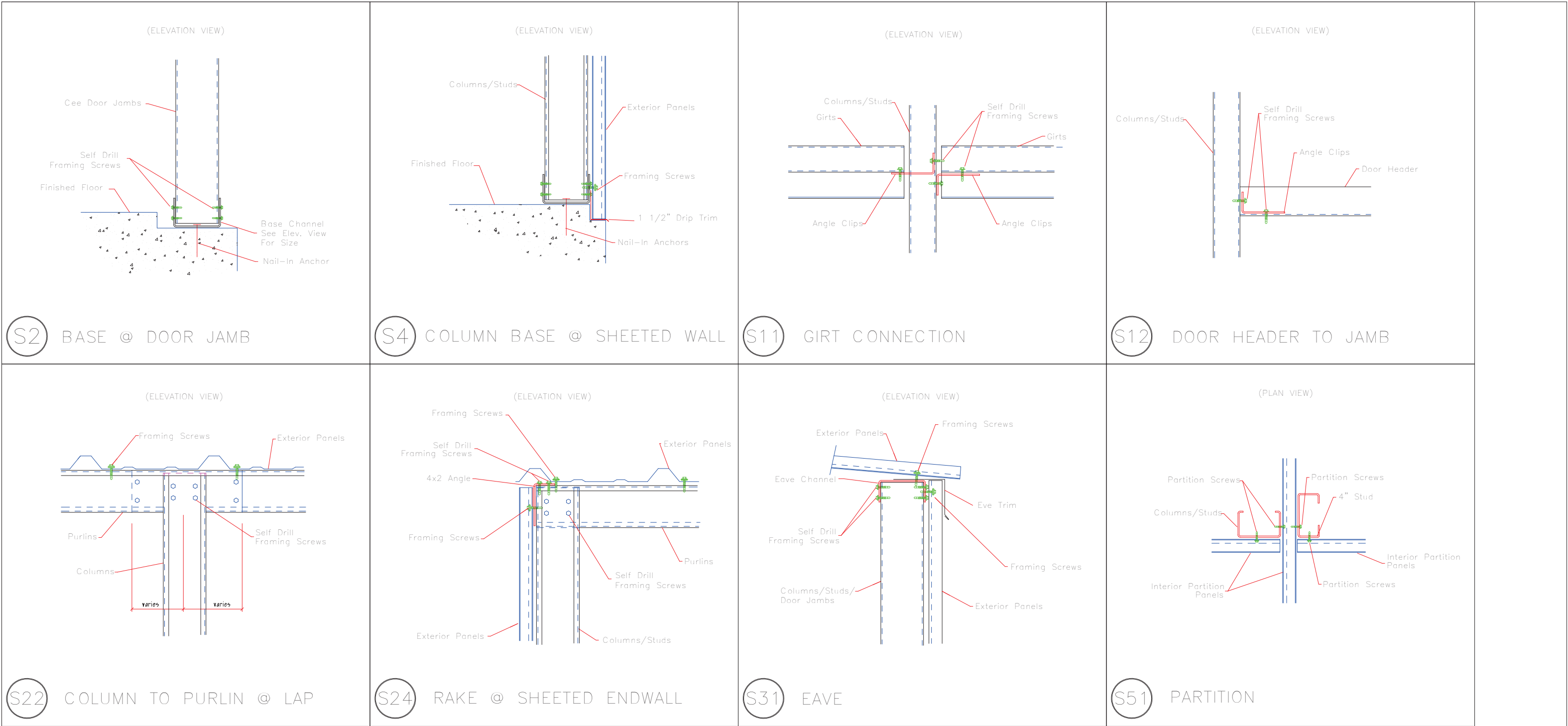
ID	MARK/PART
1	BASECLIP




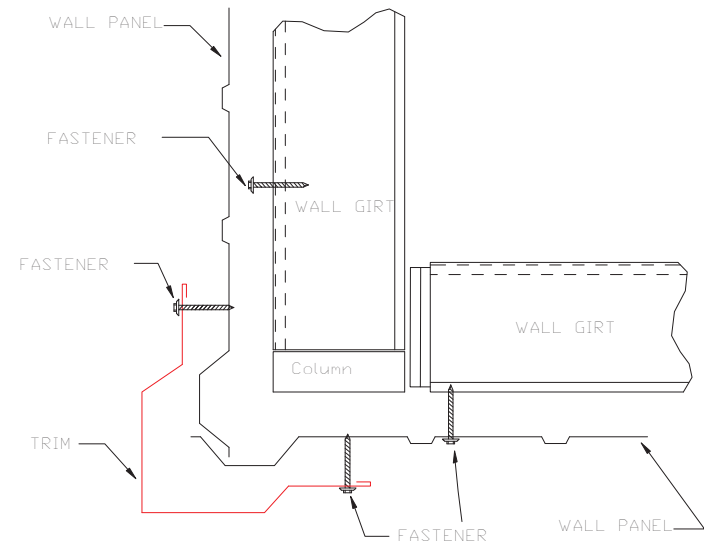
WALL SHEETING & TRIM FRAME LINE: (Typ of 4)
PANELS: 29 Ga. PR - Galvalume +



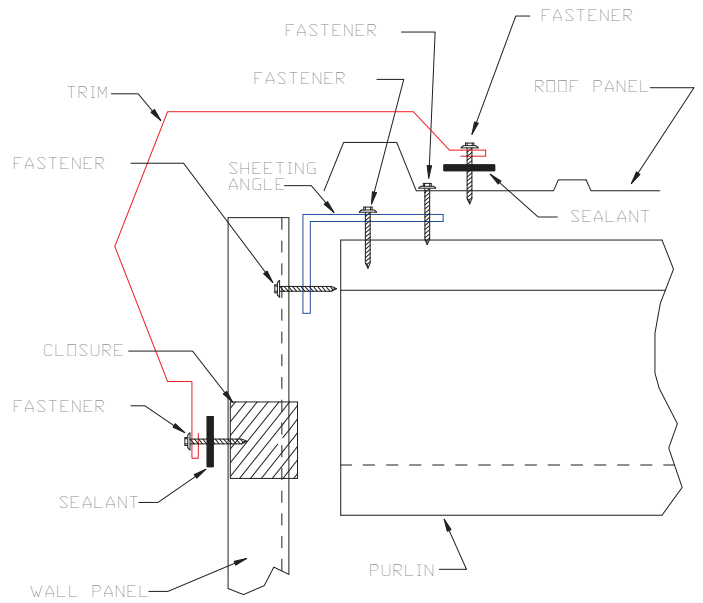
 906 West 9th Street Pella, IA 50219 (800) 225-0481 www.pellabuildings.com		DESCRIPTION: PARTITION DRAWING	
		CUSTOMER: MEGA Storage	PROJECT: LEE'S SUMMIT
LOCATION: LEE'S SUMMIT MO			
DRN. BY JB	CK'D BY	DATE 8/23/22	SCALE N.T.S.
		REV. 00	QUOTATION NO. L
			SHEET NO. 11 OF 14



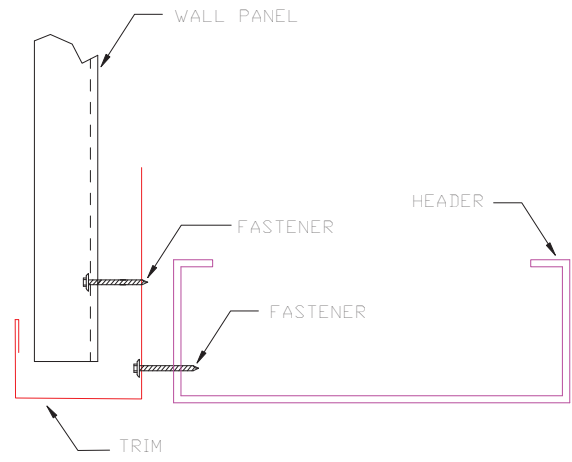
 906 West 9th Street Pella, IA 50219 (800) 225-0481 www.pellabuildings.com	DESCRIPTION: DETAIL DRAWINGS						
	CUSTOMER: MEGA Storage				PROJECT: LEE'S SUMMIT		
	LOCATION: LEE'S SUMMIT MO						
	DRN. BY JB	CK'D BY	DATE 8/23/22	SCALE N.T.S.	REV. 00	QUOTATION NO. L	SHEET NO. 12 OF 14



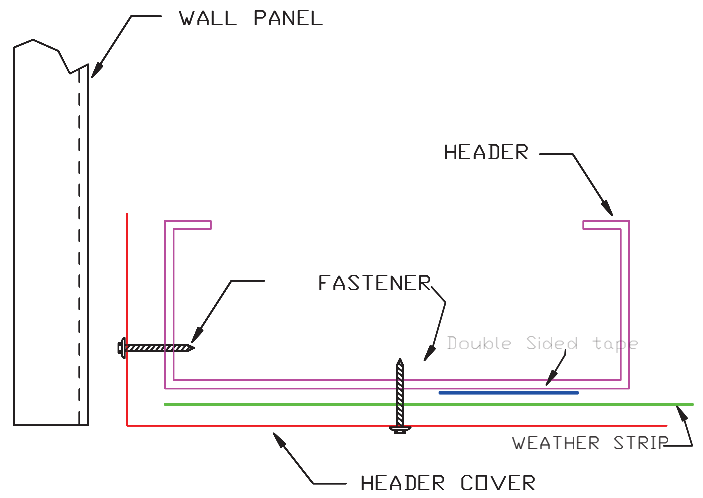
OUTSIDE CORNER
TRIM_198



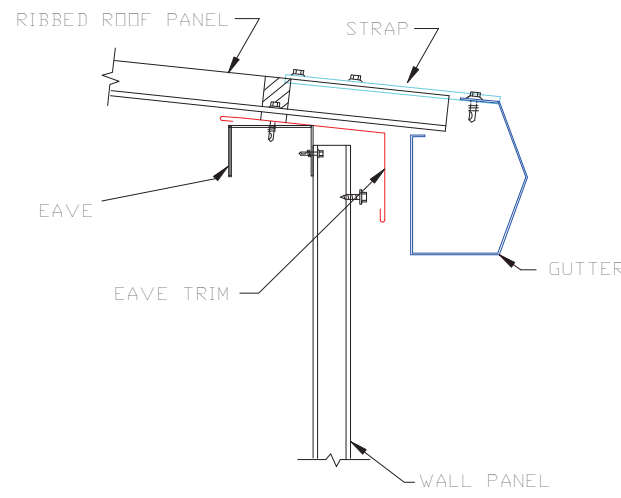
GABLE
TRIM_229



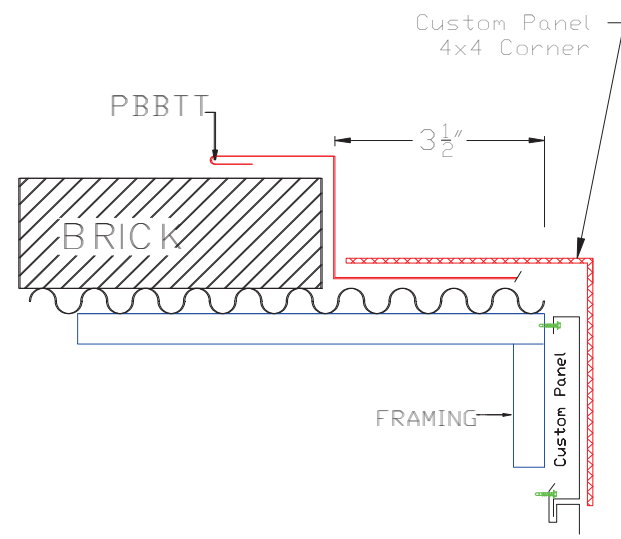
HEADER
TRIM_232



HEADER COVER
TRIM_235



GUTTER FLASHING
TRIM_317



PBBTT Where brick meets Custom Panel at corner



DESCRIPTION: DETAIL DRAWINGS							
CUSTOMER: MEGA Storage					PROJECT: LEE'S SUMMIT		
LOCATION: LEE'S SUMMIT MO							
DRN. BY	CK'D BY	DATE	SCALE	REV.	QUOTATION NO.	SHEET NO.	
JB		8/23/22	N.T.S.	00	L	13 OF 14	