



# PELLA

BUILDING SYSTEMS

906 West 9th Street Pella, IA 50219  
 (800) 225-0481 www.pellabuildings.com

BUILDER / CONTRACTOR RESPONSIBILITIES

IT IS THE RESPONSIBILITY OF THE BUILDER/CONTRACTOR TO INSURE THAT ALL PROJECT PLANS AND SPECIFICATIONS COMPLY WITH THE APPLICABLE REQUIREMENTS OF ANY GOVERNING BUILDING AUTHORITIES. THE SUPPLYING OF SEALED ENGINEERING DATA AND DRAWINGS FOR THE METAL BUILDING SYSTEM DOES NOT IMPLY OR CONSTITUTE AN AGREEMENT THAT THE METAL BUILDING SYSTEM MANUFACTURER OR ITS DESIGN ENGINEER IS ACTING AS THE ENGINEER OF RECORD OR DESIGN PROFESSIONAL FOR A CONSTRUCTION PROJECT.

THE CONTRACTOR MUST SECURE ALL REQUIRED APPROVALS AND PERMITS FROM THE APPROPRIATE AGENCY AS REQUIRED. APPROVAL OF THE METAL BUILDING SYSTEM MANUFACTURER'S DRAWINGS AND CALCULATIONS INDICATE THAT THE METAL BUILDING SYSTEM MANUFACTURER CORRECTLY INTERPRETED AND APPLIED THE REQUIREMENTS OF THE CONTRACT DRAWINGS AND SPECIFICATIONS. (SECT. 4.2.1 AISC CODE OF STANDARD PRACTICES, 9TH ED.) WHERE DISCREPANCIES EXIST BETWEEN THE METAL BUILDING SYSTEM MANUFACTURER'S STRUCTURAL STEEL PLANS AND THE PLANS FOR OTHER TRADES, THE STRUCTURAL STEEL PLANS SHALL GOVERN. (SECT. 3.3 AISC CODE OF STANDARD PRACTICE 9TH ED.)

DESIGN CONSIDERATIONS OF ANY MATERIALS IN THE STRUCTURE WHICH ARE NOT FURNISHED BY THE METAL BUILDING SYSTEM MANUFACTURER ARE THE RESPONSIBILITY OF THE CONTRACTORS AND ENGINEERS OTHER THAN THE METAL BUILDING SYSTEM MANUFACTURER'S ENGINEER UNLESS SPECIFICALLY INDICATED.

THE CONTRACTOR IS RESPONSIBLE FOR ALL ERECTION OF STEEL AND ASSOCIATED WORK IN COMPLIANCE WITH THE METAL BUILDING SYSTEM MANUFACTURER "FOR CONSTRUCTION" DRAWINGS.

ALL BRACING AS SHOWN AND PROVIDED BY THE METAL BUILDING SYSTEM MANUFACTURER FOR THIS BUILDING IS REQUIRED AND SHALL BE INSTALLED BY THE ERECTOR AS A PERMANENT PART OF THE STRUCTURE.

TEMPORARY SUPPORTS, SUCH AS TEMPORARY GUYS, BRACES, FALSE WORK, CRIBBING OR OTHER ELEMENTS REQUIRED FOR THE ERECTION OPERATION WILL BE DETERMINED AND FURNISHED AND INSTALLED BY THE ERECTOR. THESE TEMPORARY SUPPORTS WILL SECURE THE STEEL FRAMING, OR ANY PARTLY ASSEMBLED STEEL FRAMING, AGAINST LOADS COMPARABLE IN INTENSITY TO THOSE FOR WHICH THE STRUCTURE WAS DESIGNED, RESULTING FROM WIND, SEISMIC FORCES AND ERECTION OPERATIONS, BUT NOT THE LOADS RESULTING FROM THE PERFORMANCE OF WORK BY OR THE ACTS OF OTHERS, NOR SUCH UNPREDICTABLE LOADS AS THOSE DUE TO TORNADO, EXPLOSION, OR COLLISION. (SECT. 7.9.1 AISC CODE OF STANDARD PRACTICE, 9TH ED.)

**WARNING:** IN NO CASE SHOULD GALVALUME STEEL PANELS BE USED IN CONJUNCTION WITH LEAD OR COPPER. BOTH LEAD AND COPPER HAVE HARMFUL CORROSION EFFECTS ON THE ALUMINUM ZINC ALLOY COATING WHEN THEY ARE USED IN CONTACT WITH GALVALUME STEEL PANELS. EVEN RUN-OFF FROM COPPER FLASHING, WIRING, OR TUBING ONTO GALVALUME SHOULD BE AVOIDED.

ROOF PANELS:

COLOR: \_\_\_\_\_ Galvalume+ w/ Drip Stop

WALL PANELS:

COLOR: \_\_\_\_\_ NEED SIG 200

TRIM COLORS:

CABLE: \_\_\_\_\_ NEED SIG 200

CORNER: \_\_\_\_\_ NEED SIG 200

EAVE: \_\_\_\_\_ NEED SIG 200

FRAMED OPENINGS: \_\_\_\_\_ NEED SIG 200

LINER PANELS:

COLOR: \_\_\_\_\_ N/A

LINER TRIM:

COLOR: \_\_\_\_\_ N/A

BUILDING LOADS / DESCRIPTION:

WIDTH: 65 LENGTH: 70 HEIGHT: 16.08 / 15.88  
 (BUILDING DIMENSIONS ARE NOMINAL. REFER TO PLANS).

SITE CLASS: d

OCCUPANCY CATEGORY: I - Low

THIS STRUCTURE IS DESIGNED UTILIZING THE LOADS INDICATED AND APPLIED AS REQUIRED BY : IBC 18

SEISMIC DESIGN CATEGORY: B

THE CONTRACTOR IS TO CONFIRM THAT THESE LOADS COMPLY WITH THE REQUIREMENTS OF THE LOCAL BUILDING DEPARTMENT.

ROOF DEAD LOAD: 2.000 PSF (ROOF PANELS & PURLINS)

COLLATERAL LOAD: 0.5 PSF SNOW EXPOSURE: 1.0000

ROOF LIVE LOAD: 20.00 PSF WIND EXPOSURE: C

ROOF SNOW LOAD: 13.44 PSF INTERNAL PRESSURE COEFF.: \_\_\_\_\_

GROUND SNOW LOAD: 20 PSF 0.18 / -0.18

BASIC WIND SPEED: 103 MPH SPECTRAL RESPONSE COEFF. \_\_\_\_\_ MAPPED SPECTRAL RESPONSE ACC. \_\_\_\_\_

SEISMIC ZONE: B Sds 0.10 Ss 0.10

THERMAL FACTOR: 1.20 Sd1 0.11 St 0.07

IMPORTANCE FACTORS: \_\_\_\_\_ DESIGN BASE SHEAR, V: \_\_\_\_\_

WIND LOAD	<u>1.00</u>	EXPANDED FORMULA	$0.667 * I_e * F_a * S_s * W / R$
SNOW LOAD	<u>0.8000</u>	LONGITUDINAL	<u>0.91</u>
SEISMIC LOAD	<u>1.00</u>	TRANSVERSE	<u>0.89</u>

DEFLECTION LIMITS:

EW COL:	180
EW RAF LIVE:	180
EW RAF WIND:	180
WALL GIRT:	90
PURL LIVE:	180
PURL WIND:	150
WALL PANEL:	60
ROOF PANEL LIVE:	60
ROOF PANEL WIND:	60
RF HORIZONTAL:	180
RF VERTICAL:	60
WIND BENT:	60
RF CRANE:	0
RF SEIS:	0
WIND BENT SEIS:	0

APPROVAL NOTES

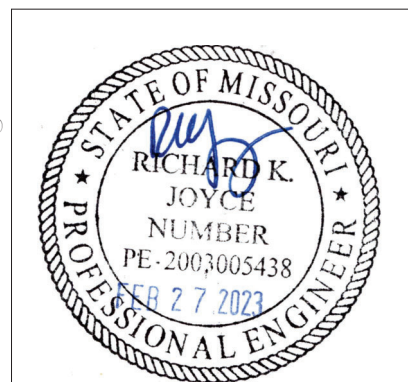
THE FOLLOWING CONDITIONS APPLY IN THE EVENT THAT THESE DRAWINGS ARE USED AS APPROVAL DRAWINGS: IT IS IMPERATIVE THAT ANY CHANGES TO THESE DRAWINGS BE MADE IN CONTRASTING INK (PREFERABLY RED INK), HAVE ALL INSTANCES OF CHANGE CLEARLY INDICATED, AND BE LEGIBLE AND UNAMBIGUOUS. A SIGNATURE AND DATE IS REQUIRED ON ALL PAGES. MANUFACTURER RESERVES THE RIGHT TO RE-SUBMIT DRAWINGS WITH EXTENSIVE OR COMPLEX CHANGES REQUIRED TO AVOID MISFABRICATION. THIS MAY IMPACT THE DELIVERY SCHEDULE. APPROVAL OF THESE DRAWINGS INDICATES CONCLUSIVELY THAT THE METAL BUILDING SYSTEM MANUFACTURER HAS CORRECTLY INTERPRETED THE CONTRACT REQUIREMENTS, AND FURTHER CONSTITUTES AGREEMENT THAT THE BUILDING AS DRAWN WITH INDICATED CHANGES REPRESENTS THE TOTAL OF THE MATERIALS TO BE SUPPLIED BY MANUFACTURER. ANY CHANGES NOTED ON THE DRAWINGS NOT IN COMFORMANCE WITH THE TERMS AND REQUIREMENTS OF THE CONTRACT BETWEEN MANUFACTURER AND ITS CUSTOMER ARE NOT BINDING ON MANUFACTURER UNLESS SUBSEQUENTLY SPECIFICALLY ACKNOWLEDGED AND AGREED TO IN WRITING BY CHANGE ORDER OR SEPARATE DOCUMENTATION. MANUFACTURER RECOGNIZES THAT RUBBER STAMPS ARE ROUTINELY USED FOR INDICATING APPROVAL, DISAPPROVAL, REJECTION, OR MERE REVIEW OF THE DRAWINGS SUBMITTED. HOWEVER, MANUFACTURER DOES NOT ACCEPT CHANGES OR ADDITIONS TO CONTRACTUAL TERMS AND CONDITIONS THAT MAY APPEAR WITH USE OF A STAMP OR SIMILAR INDICATION OF APPROVAL, DISAPPROVAL, ETC. SUCH LANGUAGE APPLIED TO MANUFACTURER'S DRAWINGS BY THE CUSTOMER, ARCHITECT, ENGINEER, OR ANY OTHER PARTY WILL BE CONSIDERED AS UNACCEPTABLE ALTERNATIONS TO THESE DRAWING NOTES, AND WILL NOT ALTER THE CONTRACTUAL RIGHTS AND OBLIGATIONS EXISTING BETWEEN MANUFACTURER AND ITS CUSTOMER.

GENERAL NOTES:

- MATERIALS : MINIMUM YIELD:  
 HOT ROLLED BAR Fy = ksi MIN.  
 STRUCTURAL STEEL SHEET Fy = ksi MIN.  
 STRUCTURAL STEEL PLATE Fy = ksi MIN.  
 COLD FORMED SHAPES Fy = ksi MIN.  
 WALL SHEETING Fy = ksi MIN.  
 ROOF SHEETING Fy = ksi MIN.  
 BOLTS A307 & A325  
 THE METAL BUILDING MANUFACTURER RESERVES THE RIGHT TO SUBSTITUTE THE ABOVE MATERIALS WITH EQUAL OR BETTER MATERIAL.

- BOLT TIGHTENING REQUIREMENTS:  
 ALL HIGH STRENGTH BOLTS ARE A325 UNLESS NOTED OTHERWISE. HIGH STRENGTH BOLTS SHALL BE TIGHTENED BY THE TURN OF THE NUT METHOD IN ACCORDANCE WITH THE LATEST EDITION AISC "SPECIFICATION FOR STRUCTURAL JOINTS USING ASTM A325 OR A490 BOLTS". A325 BOLTS SHALL BE INSTALLED WITH OUT WASHERS WHEN TIGHTENED BY THE "TURN OF THE NUT" METHOD. ALL BOLTED CONNECTIONS, FOR SHEAR/BEARING CONNECTION TYPE WITH BOLT THREADS EXCLUDED FROM THE SHEAR PLANE SHALL BE SNUG TIGHT ONLY.

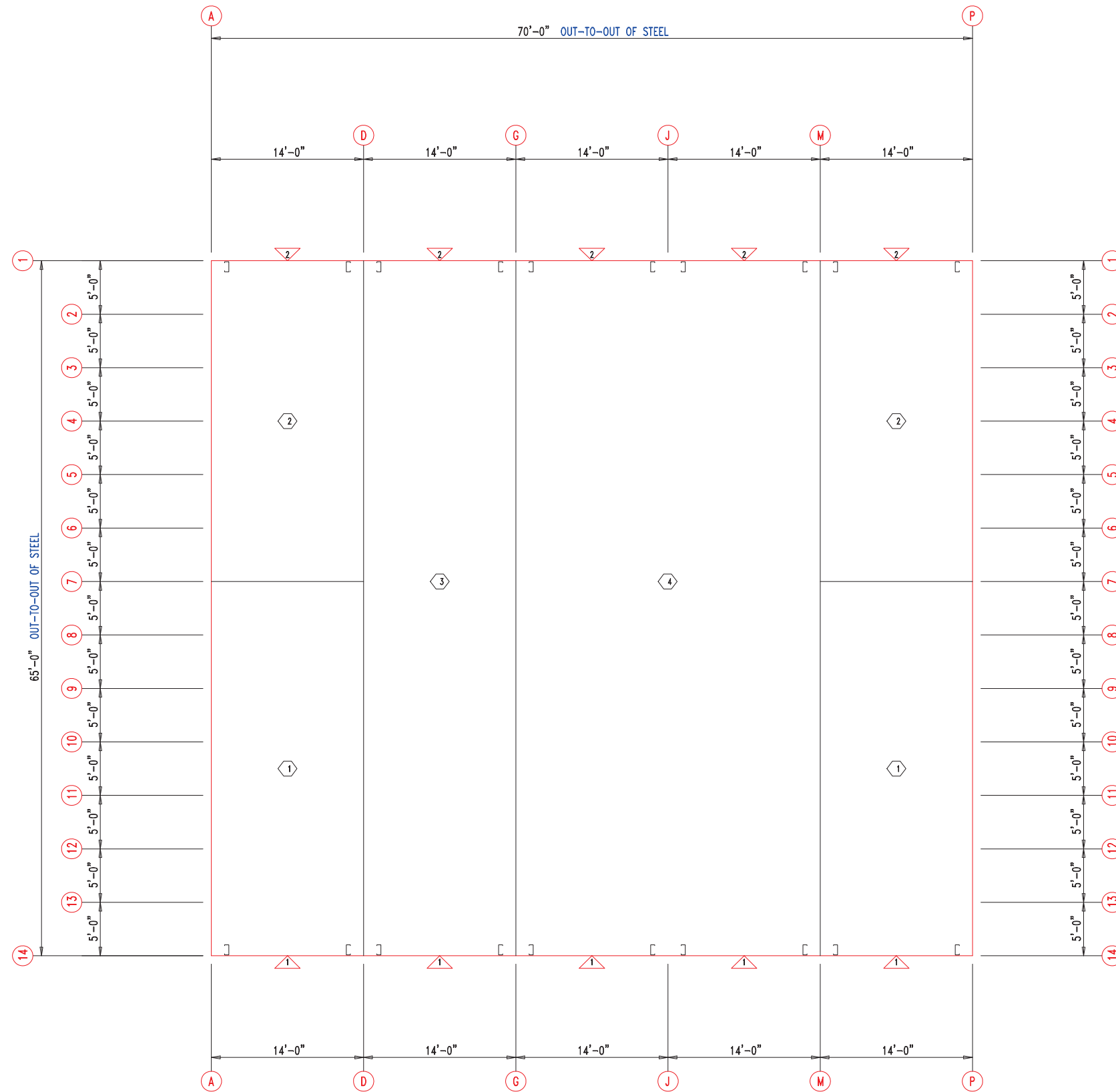
- ALL STRUCTUAL STEEL TO RECEIVE A RUST INHIBITIVE PRIMER. THIS PAINT IS NOT INTENDED FOR LONG TERM EXPOSURE TO THE ELEMENTS.



IMPORTANT NOTE: FINAL DETAILING, FABRICATION, AND DELIVERY DATE OF THIS PROJECT CANNOT BE COMPLETED UNTIL THE SIGNED APPROVALS ARE RETURNED TO THE METAL BUILDING MANUFACTURER.

△		
△		
△		
△	.././..	FOR CONSTRUCTION
△	.././..	FOR APPROVAL
REV.	DATE	REVISION

PURCHASER: MEGA Storage  
 PROJECT: LEES SUMMIT  
 JOB NUMBER: K



FLOOR PLAN

DOOR SCHEDULE

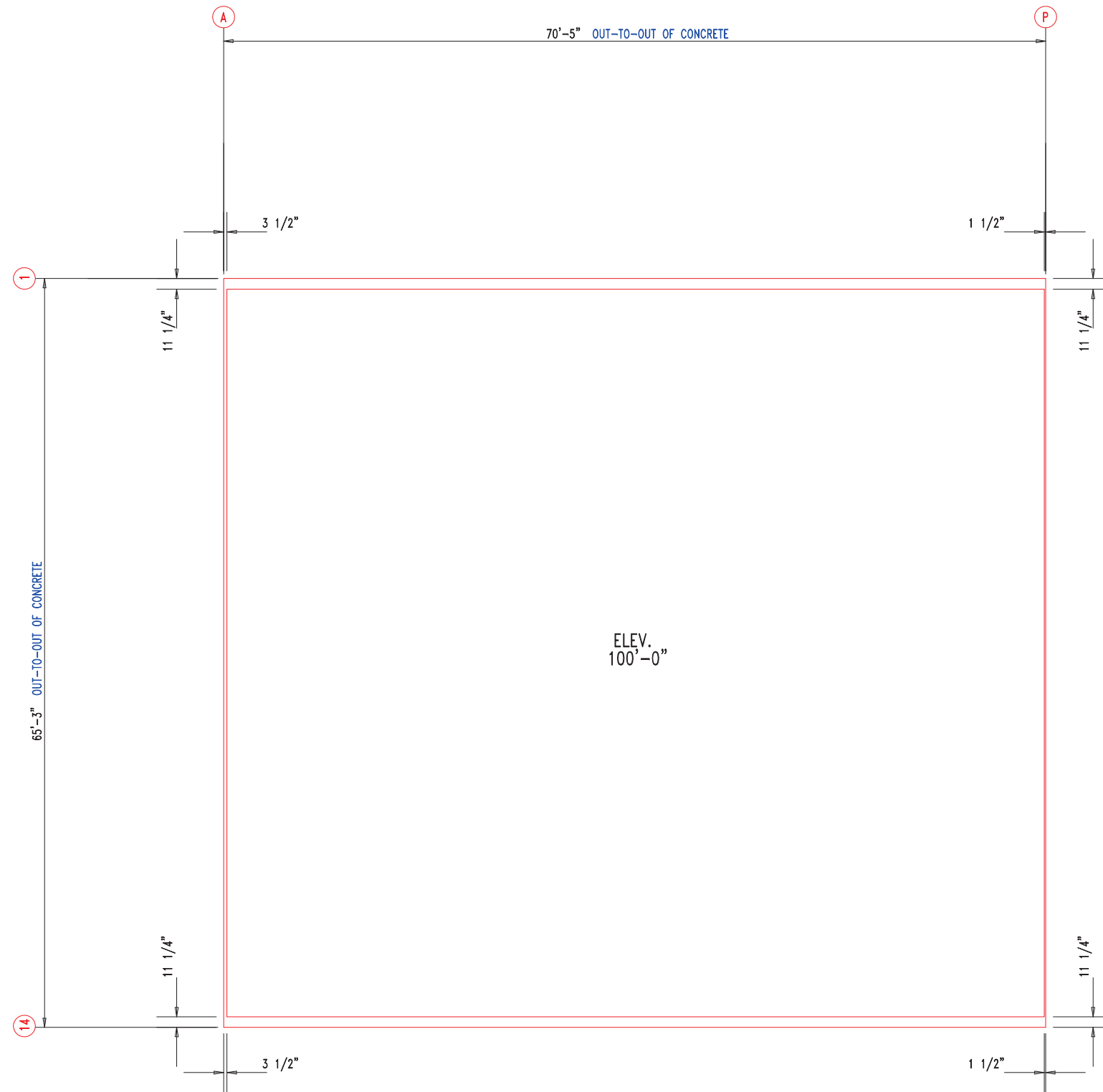
ID	QUAN	DESCRIPTION	COLOR
1	5	Janus 1214 M1950 Rollup	
2	5	Janus 1214 M1950 Rollup	

COMPARTMENT TABLE

ID	QUAN	WIDTH	LENGTH
1	2	14'-0"	35'-0"
2	2	14'-0"	30'-0"
3	1	14'-0"	65'-0"
4	1	28'-0"	65'-0"




DESCRIPTION: FLOOR PLAN		PROJECT: LEE'S SUMMIT	
CUSTOMER: MEGA Storage		PROJECT: LEE'S SUMMIT	
LOCATION: LEE'S SUMMIT MO			
DRN. BY JB	CK'D BY	DATE 8/23/22	SCALE N.T.S.
REV. 00	QUOTATION NO. K	SHEET NO. 1 OF 14	

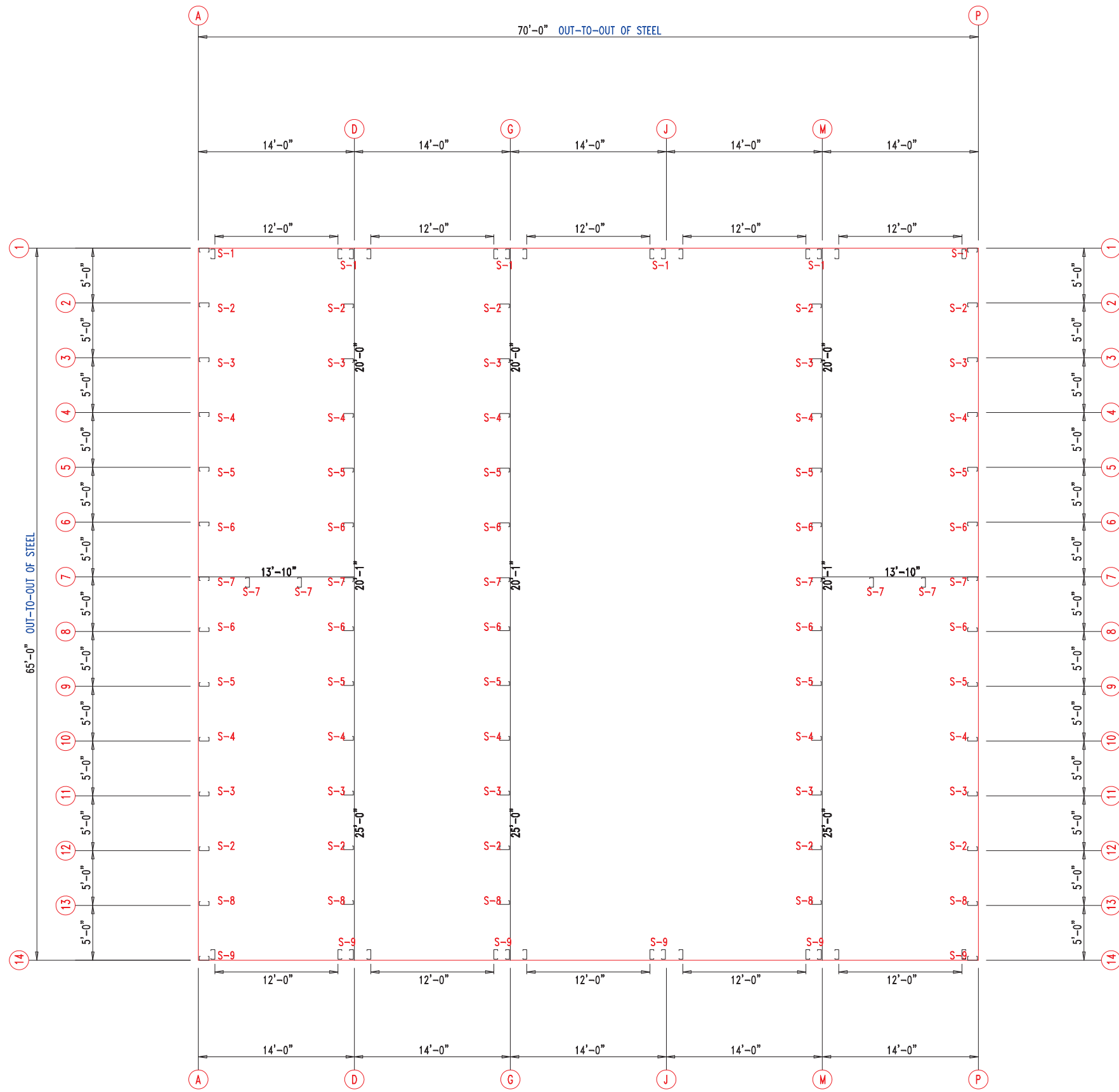


ANCHOR PLAN




		DESCRIPTION: ANCHOR PLAN			
		CUSTOMER: MEGA Storage		PROJECT: LEE'S SUMMIT	
DRN. BY: JB		CK'D BY:	DATE: 8/23/22	SCALE: N.T.S.	REV. 00
906 West 9th Street Pella, IA 50219 (800) 225-0481 www.pellabuildings.com		LOCATION: LEE'S SUMMIT MO		QUOTATION NO. K	SHEET NO. 2 OF 14

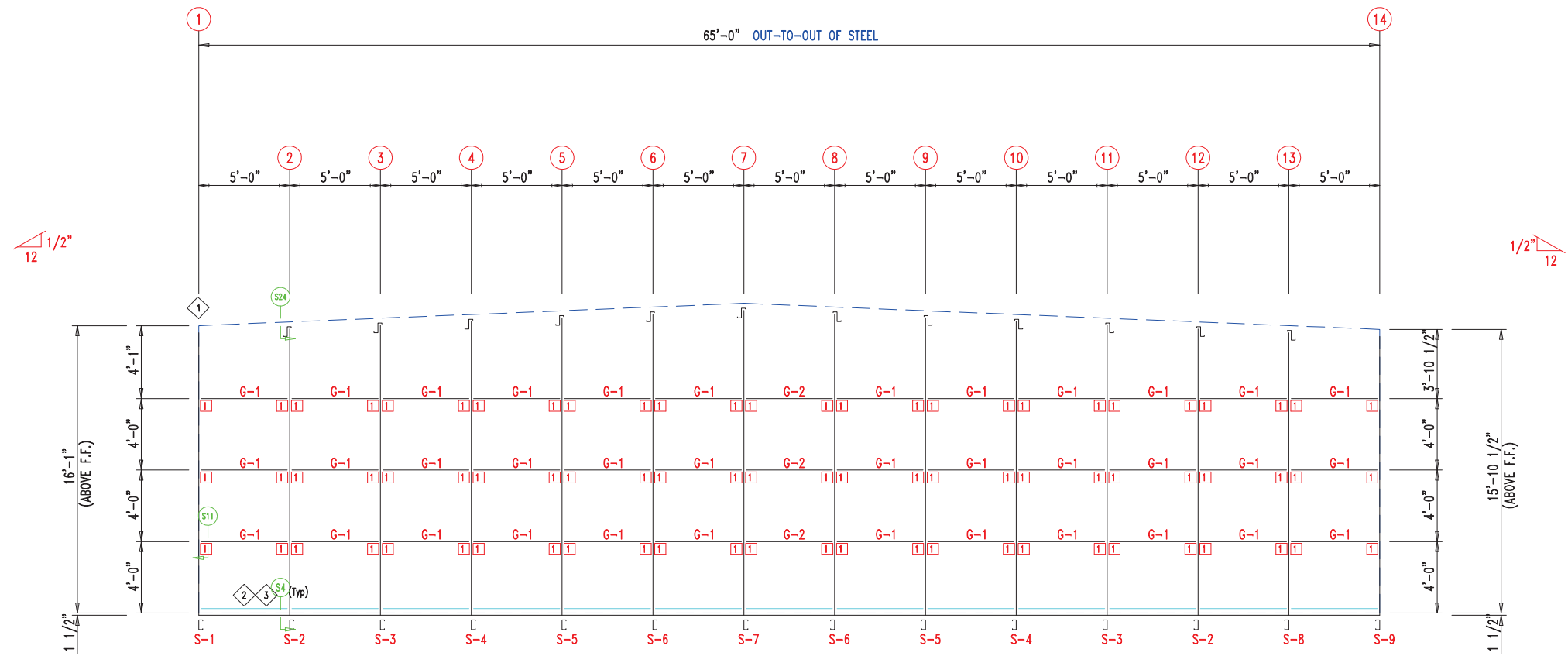
MEMBER TABLE		
MARK	PART	LENGTH
S-1	6X2C16	16'-2 1/2"
S-2	6X2C16	16'-3 1/2"
S-3	6X2C16	16'-6"
S-4	6X2C16	16'-8 1/2"
S-5	6X2C16	16'-11"
S-6	6X2C16	17'-1 1/2"
S-7	6X2C16	17'-4"
S-8	6X2C16	16'-1"
S-9	6X2C16	16'-0"



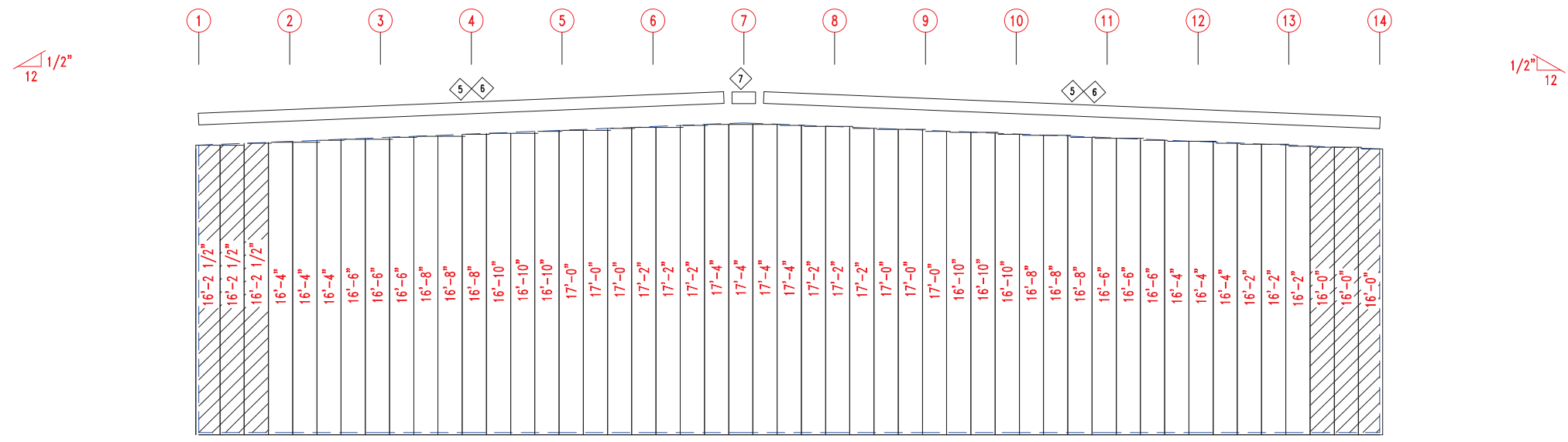
FLOOR PLAN



		DESCRIPTION: FLOOR PLAN			
		CUSTOMER: MEGA Storage		PROJECT: LEE'S SUMMIT	
LOCATION: LEE'S SUMMIT MO					
DRN. BY	CK'D BY	DATE	SCALE	REV.	QUOTATION NO.
JB		8/23/22	N.T.S.	00	K
					SHEET NO. 3 OF 14



ENDWALL FRAMING FRAME LINE: A



ENDWALL SHEETING & TRIM FRAME LINE: A  
PANELS: 20 Ga. CP - NEED SIG 200


ID	PART	LENGTH	DETAIL
4	PBDT-1.5	10'-2"	
5	FL16D	15'-4"	TRIM_229
6	FL16D	17'-10"	TRIM_229
7	FL16B	1'-4"	

MARK	PART	LENGTH
S-1	6X2C16	16'-2 1/2"
S-2	6X2C16	16'-3 1/2"
S-3	6X2C16	16'-6"
S-4	6X2C16	16'-8 1/2"
S-5	6X2C16	16'-11"
S-6	6X2C16	17'-1 1/2"
S-7	6X2C16	17'-4"
S-8	6X2C16	16'-1"
S-9	6X2C16	16'-0"
G-1	6X2C16	4'-9 1/2"
G-2	6X2C16	4'-7 1/2"

ID	MARK	LENGTH
1	L3x3	20'-0"
2	PB6EC	20'-0"
3	PB6EC	SCRAP

ID	MARK/PART
1	PBMC-6





906 West 9th Street Pella, IA 50219  
(800) 225-0481 www.pellabuildings.com

DESCRIPTION: ENDWALL DRAWING

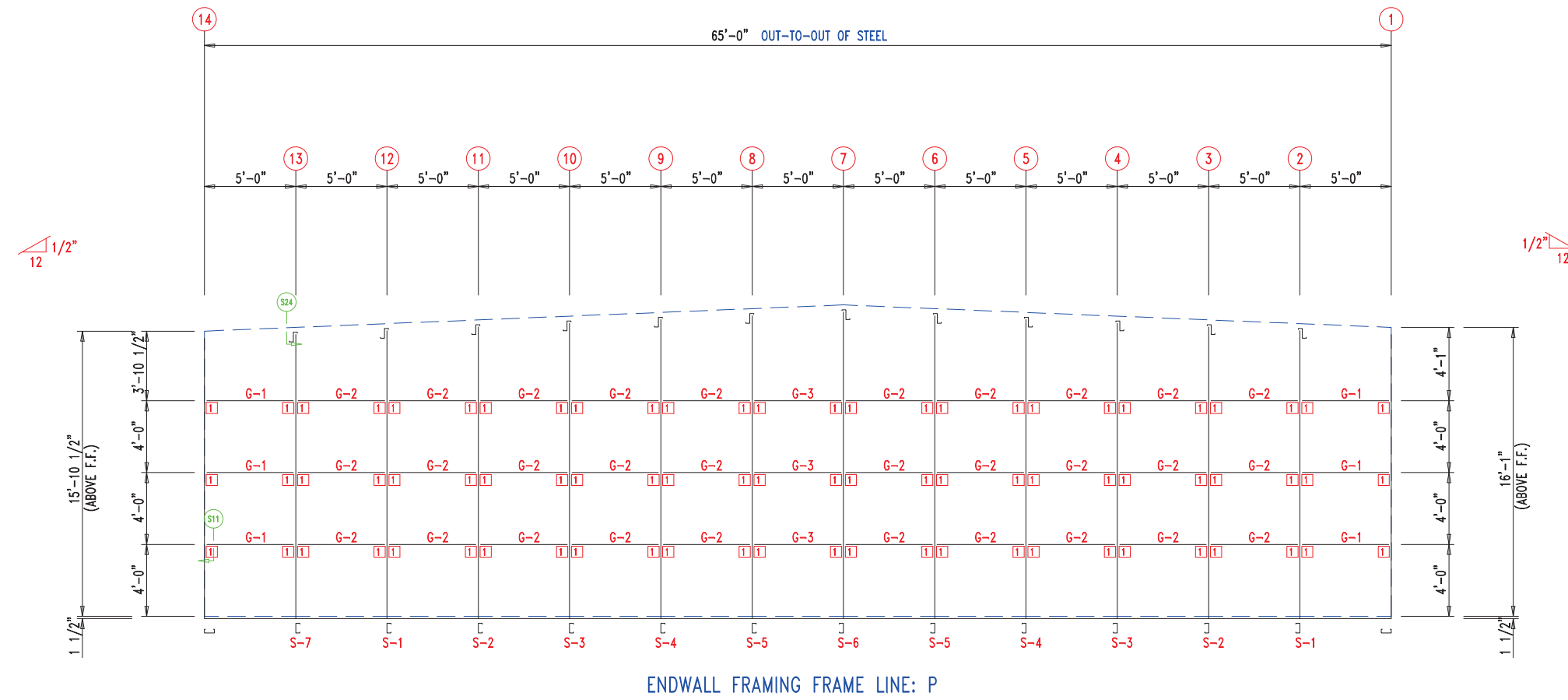
CUSTOMER: MEGA Storage PROJECT: LEE'S SUMMIT

LOCATION: LEE'S SUMMIT MO

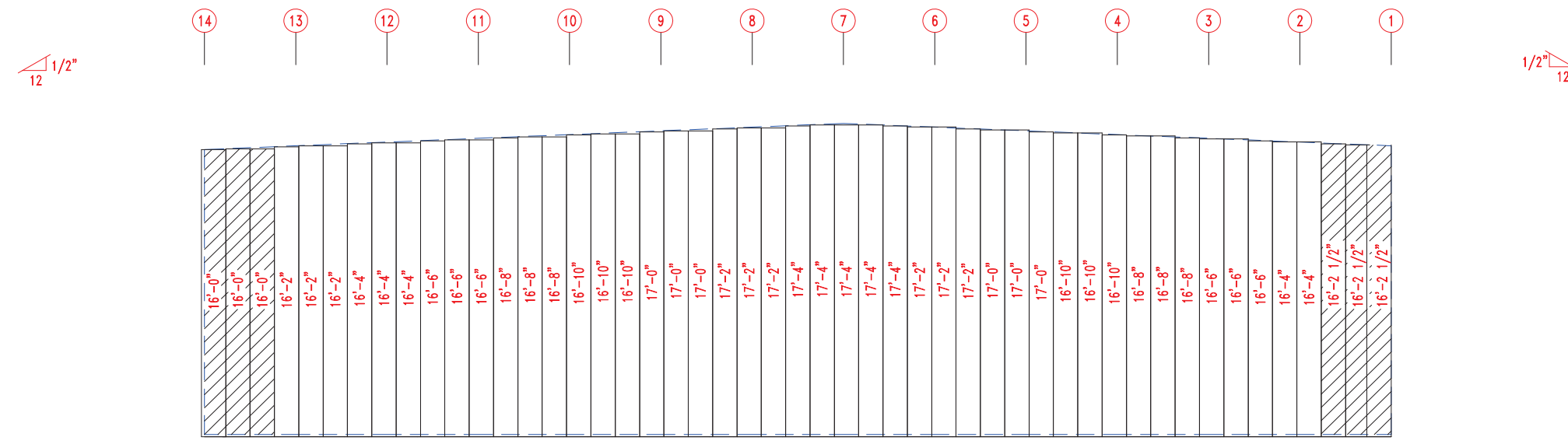
DRN. BY	CK'D BY	DATE	SCALE	REV.	QUOTATION NO.	SHEET NO.
JB		8/23/22	N.T.S.	00	K	4 OF 14

MEMBER TABLE		
MARK	PART	LENGTH
S-1	6X2C16	16'-3 1/2"
S-2	6X2C16	16'-6"
S-3	6X2C16	16'-8 1/2"
S-4	6X2C16	16'-11"
S-5	6X2C16	17'-1 1/2"
S-6	6X2C16	17'-4"
S-7	6X2C16	16'-1"
G-1	6X2C16	4'-5 3/4"
G-2	6X2C16	4'-9 1/2"
G-3	6X2C16	4'-7 1/2"

CONNECTION PLATES	
ID	MARK/PART
1	PBMC-6



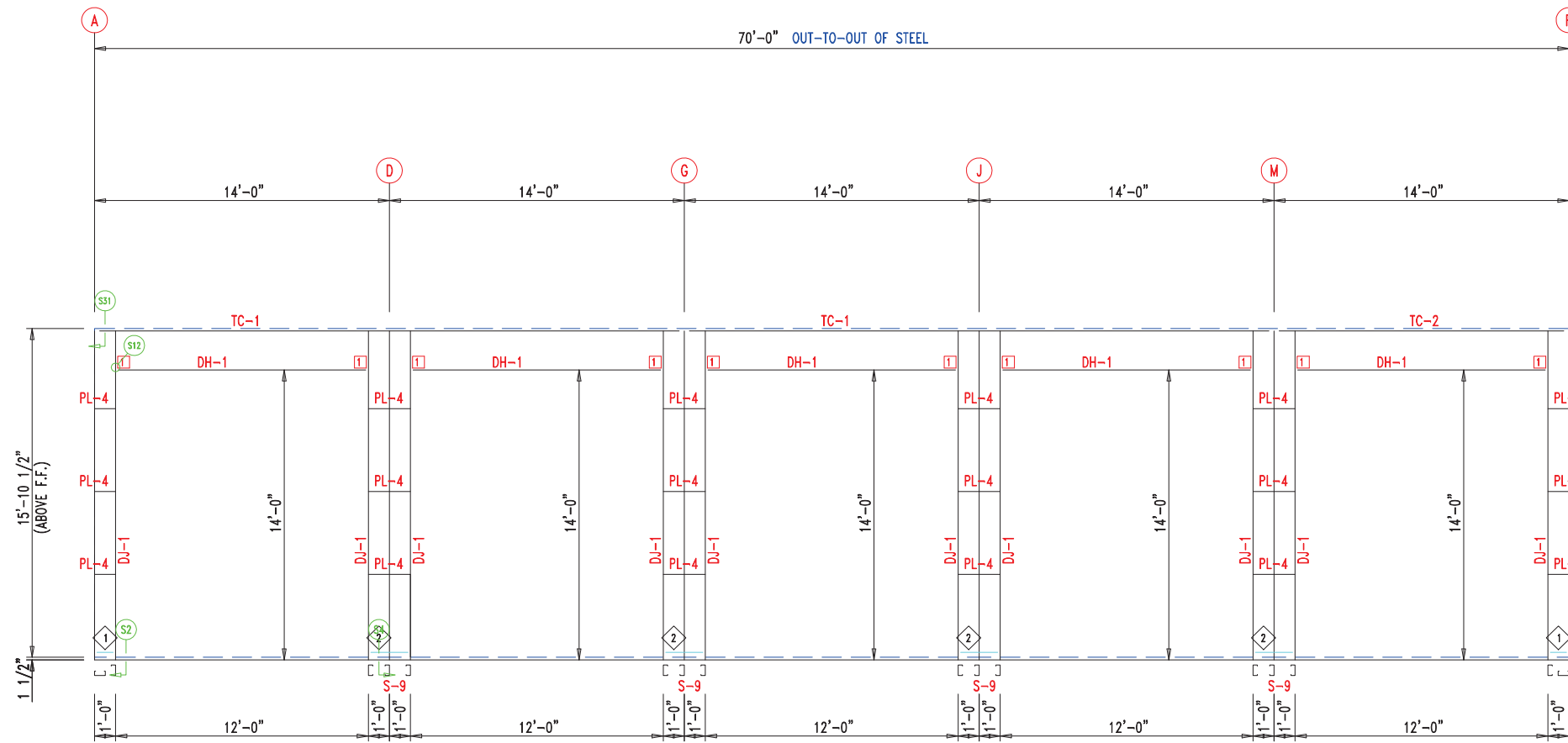
ENDWALL FRAMING FRAME LINE: P



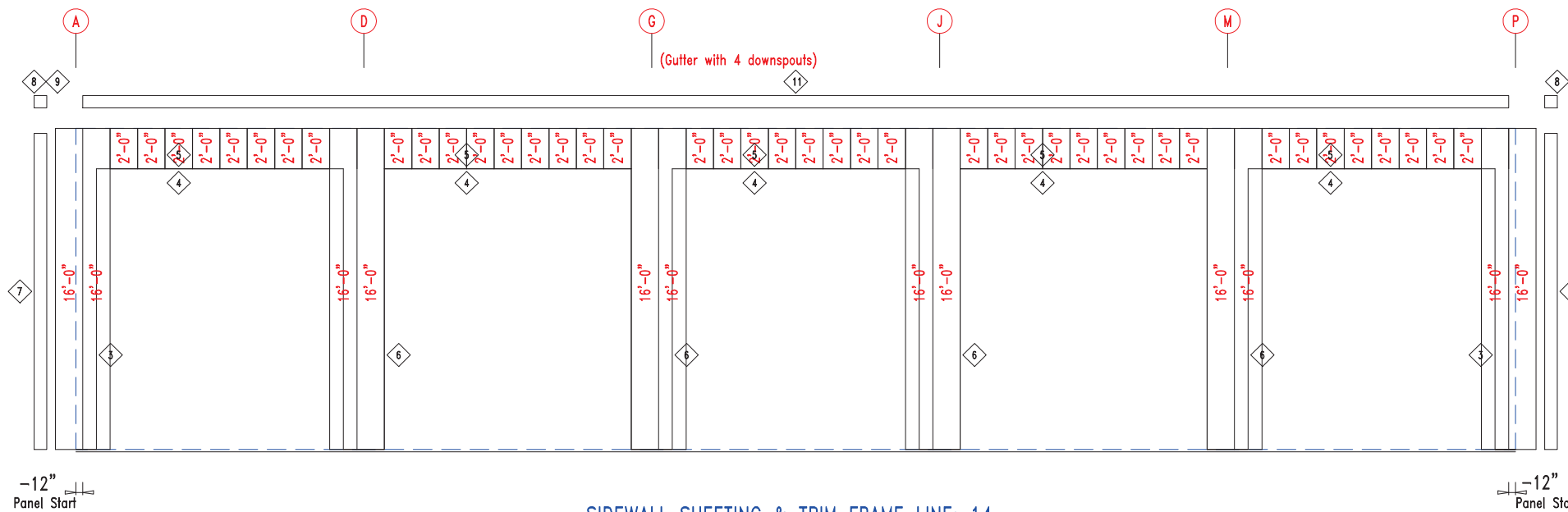
ENDWALL SHEETING & TRIM FRAME LINE: P  
PANELS: 20 Ga. CP - NEED SIG 200



 906 West 9th Street Pella, IA 50219 (800) 225-0481 www.pellabuildings.com	DESCRIPTION: ENDWALL DRAWING					
	CUSTOMER: MEGA Storage	PROJECT: LEES SUMMIT				
	LOCATION: LEE'S SUMMIT MO					
	DRN. BY: JB	CK'D BY: [Signature]	DATE: 2/13/23	SCALE: N.T.S.	REV: 00	QUOTATION NO.: K



SIDEWALL FRAMING FRAME LINE: 14



SIDEWALL SHEETING & TRIM FRAME LINE: 14  
PANELS: 20 Ga. CP - NEED SIG 200

ID	PART	LENGTH	DETAIL
3	PB6SM-12	14'-1"	
4	PB6HT-6	12'-1"	TRIM_235
5	XFL26	20'-2"	TRIM_232
6	PB6M-24	14'-1"	
7	FL835x	16'-0"	TRIM_198
8	FL16C	6"	
9	FL18AL	6"	
10	FL18AR	6"	
11	FL19	10'-2"	TRIM_317

MARK	PART	LENGTH
S-9	6X2C16	16'-0"
DJ-1	PBMJ6	16'-0"
TC-1	PB6EC	28'-0"
TC-2	PB6EC	14'-0"
DH-1	6X25C16	11'-11 1/2"
PL-4	2" Plate	20"

ID	MARK	LENGTH
1	PB6BC1	11 3/4"
2	PB6BC2	1'-11 3/4"

ID	MARK/PART
1	PBMC-6

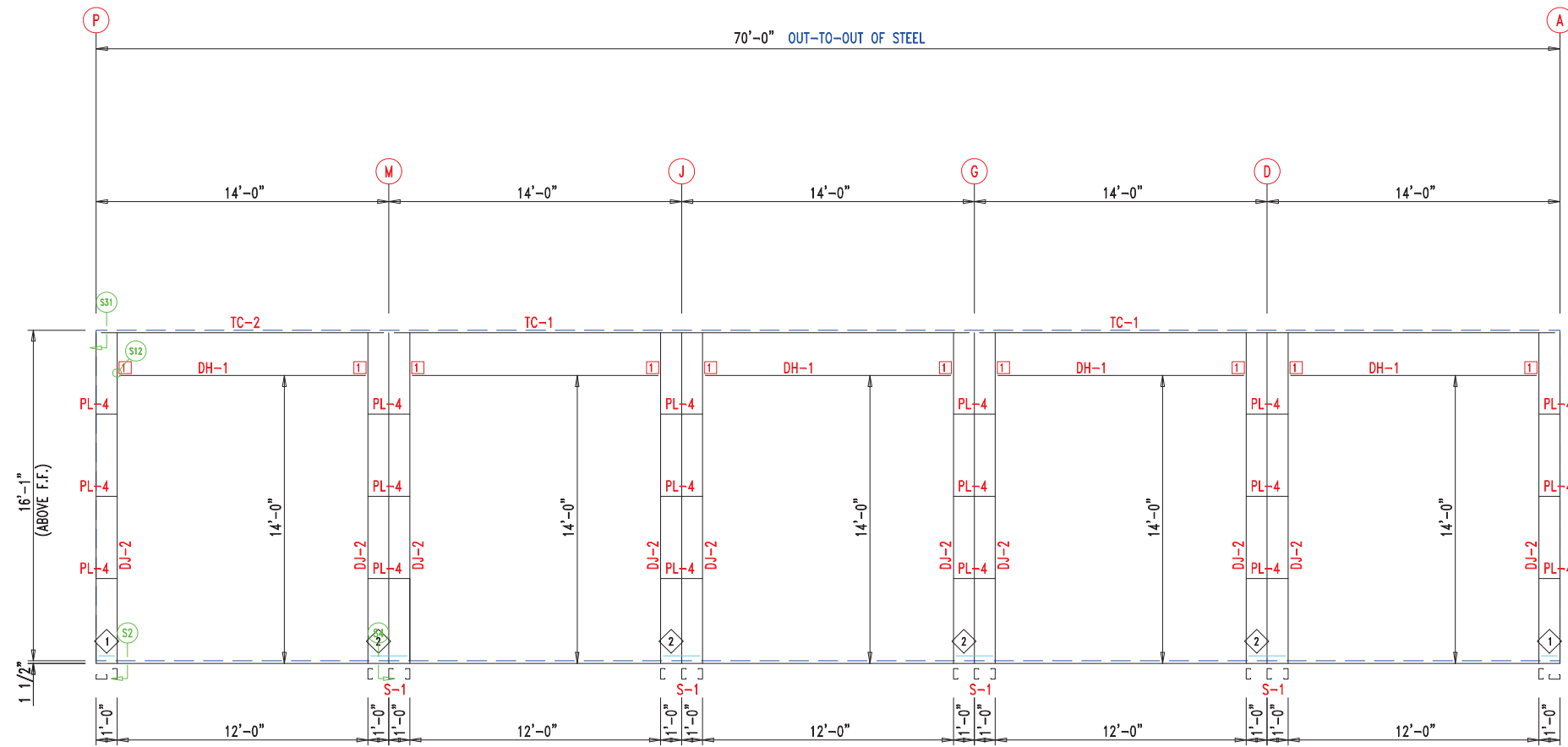


DESCRIPTION: **SIDEWALL DRAWING**

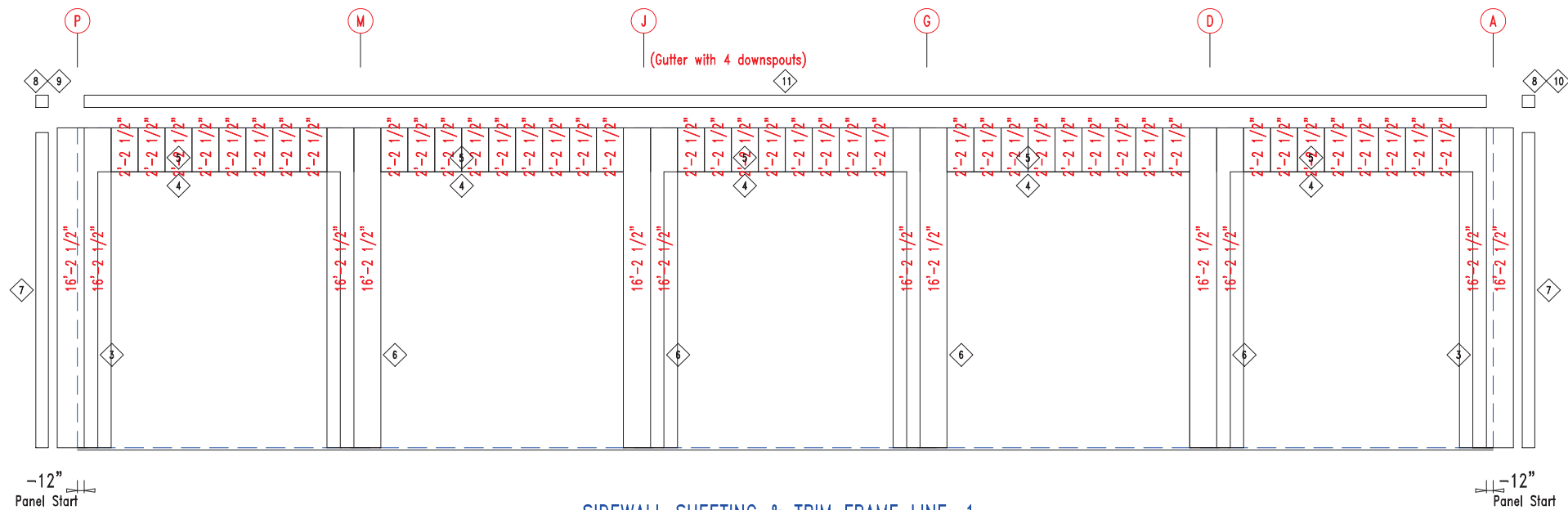
CUSTOMER: MEGA Storage PROJECT: LEE'S SUMMIT

LOCATION: LEE'S SUMMIT MO

DRN. BY	CK'D BY	DATE	SCALE	REV.	QUOTATION NO.	SHEET NO.
JB		8/23/22	N.T.S.	00	K	6 OF 14



SIDEWALL FRAMING FRAME LINE: 1



SIDEWALL SHEETING & TRIM FRAME LINE: 1  
PANELS: 20 Ga. CP - NEED SIG 200

ID	PART	LENGTH	DETAIL
3	PB6SM-12	14'-1"	
4	PB6HT-6	12'-1"	TRIM_235
5	XFL26	20'-2"	TRIM_232
6	PB6M-24	14'-1"	
7	FL835x	16'-3"	TRIM_198
8	FL16C	6"	
9	FL18AL	6"	
10	FL18AR	6"	
11	FL19	10'-2"	TRIM_317


MARK	PART	LENGTH
S-1	6X2C16	16'-2 1/2"
DJ-2	PBMJ6	16'-2 1/2"
TC-1	PB6EC	28'-0"
TC-2	PB6EC	14'-0"
DH-1	6X25C16	11'-11 1/2"
PL-4	2" Plate	20"

ID	MARK	LENGTH
1	PB6BC1	11 3/4"
2	PB6BC2	1'-11 3/4"

CONNECTION PLATES

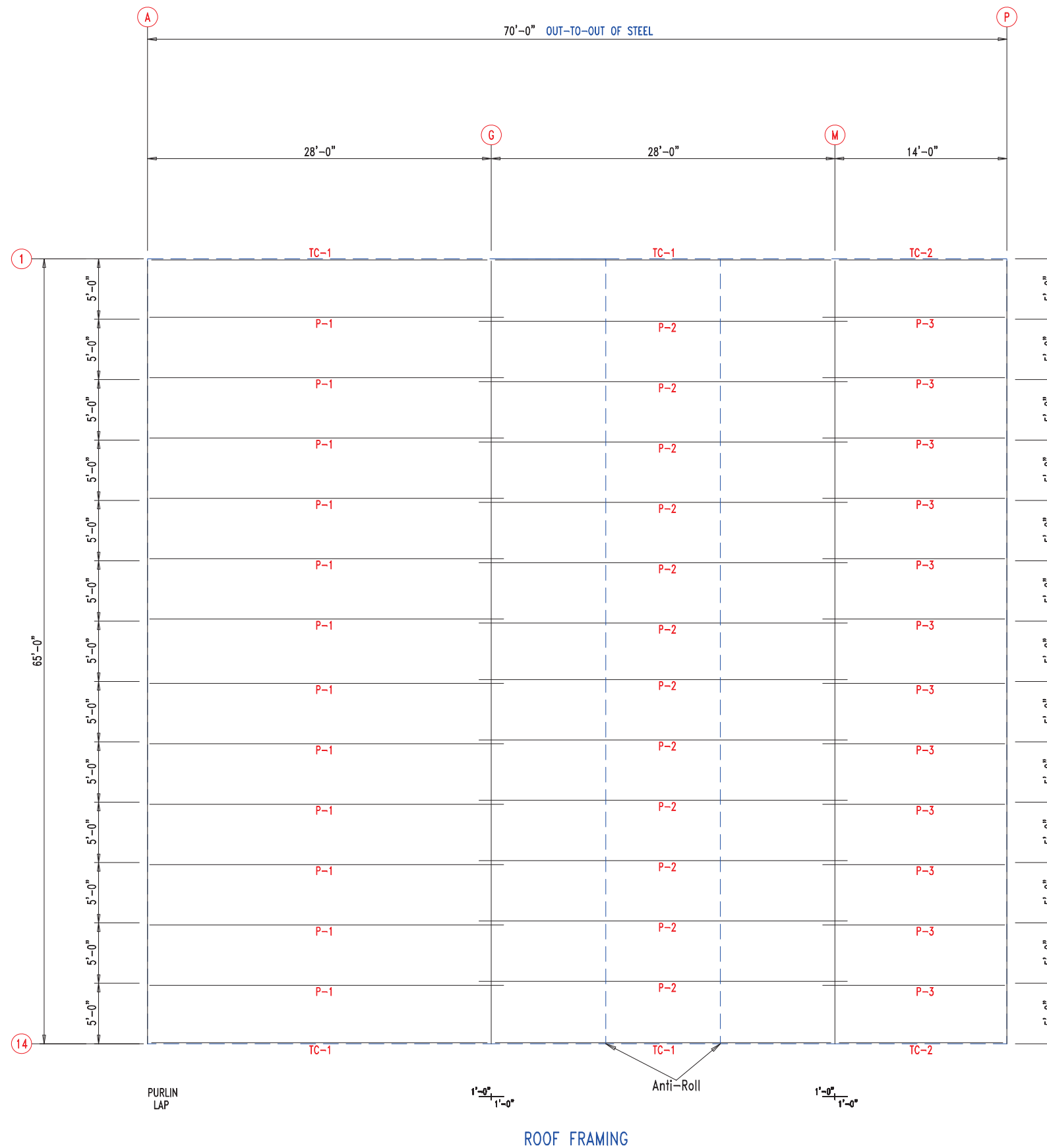
ID	MARK/PART
1	PBMC-6




 <p>906 West 9th Street Pella, IA 50219 (800) 225-0481 www.pellabuildings.com</p>	DESCRIPTION: SIDEWALL DRAWING	
	CUSTOMER: MEGA Storage	PROJECT: LEE'S SUMMIT
	LOCATION: LEE'S SUMMIT MO	
	DRN. BY: JB	CK'D BY:
	SCALE: N.T.S.	REV: 00
	QUOTATION NO.:	K
	SHEET NO.:	7 OF 14

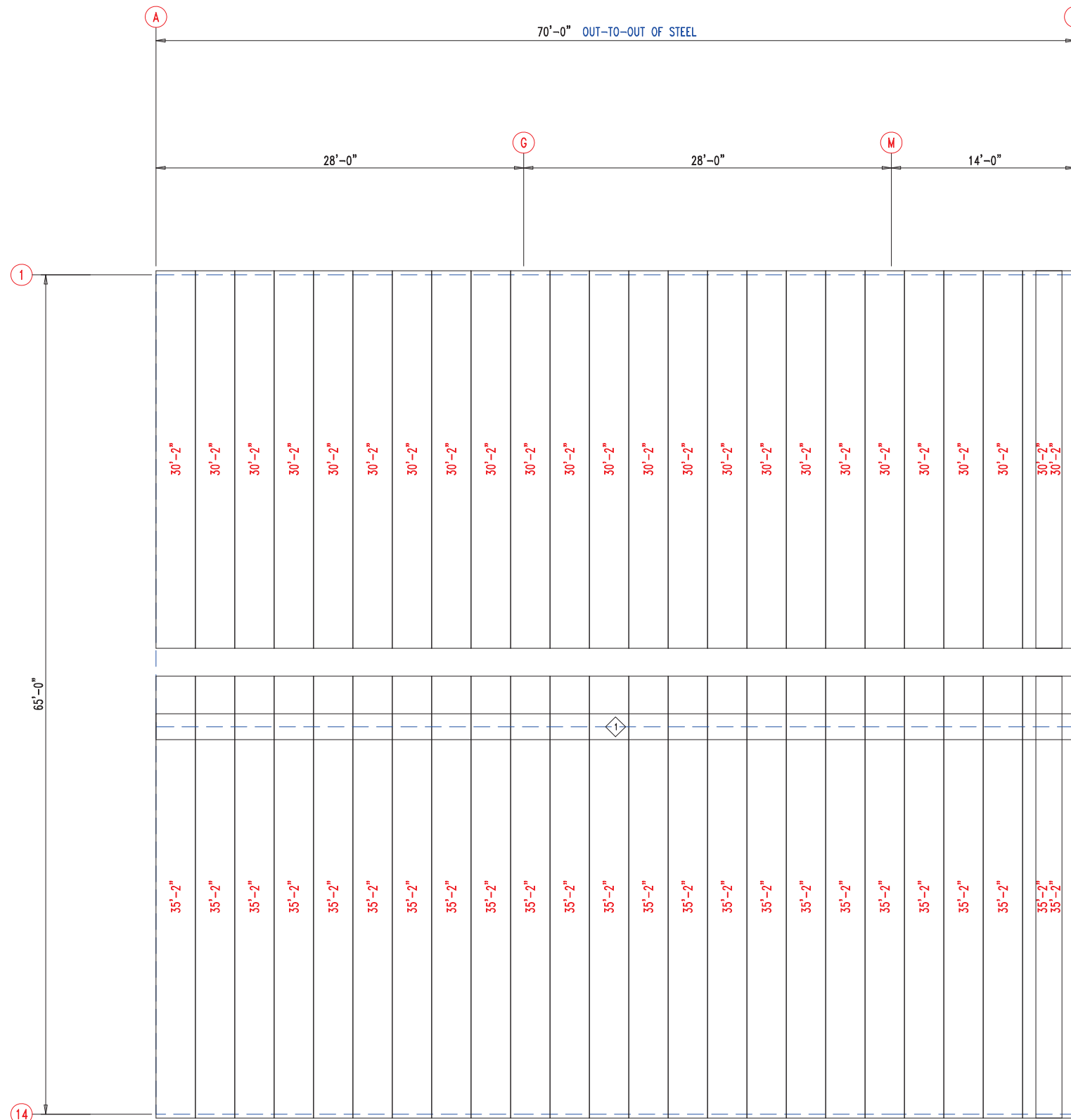


MEMBER TABLE		
MARK	PART	LENGTH
TC-1	PB6EC	28'-0"
TC-2	PB6EC	14'-0"
P-1	6X25Z14	30'-0"
P-2	12X25Z12	33'-0"
P-3	6X25Z14	15'-0"




 <p>PELLA BUILDING SYSTEMS</p> <p>906 West 9th Street Pella, IA 50219 (800) 225-0481 www.pellabuildings.com</p>	DESCRIPTION: ROOF FRAMING	
	CUSTOMER: MEGA Storage	PROJECT: LEE'S SUMMIT
LOCATION: LEE'S SUMMIT MO	SCALE: N.T.S.	REV. 00
DRN. BY: JB	CK'D BY:	DATE: 8/23/22
QUOTATION NO. K	SHEET NO. 8	OF 14

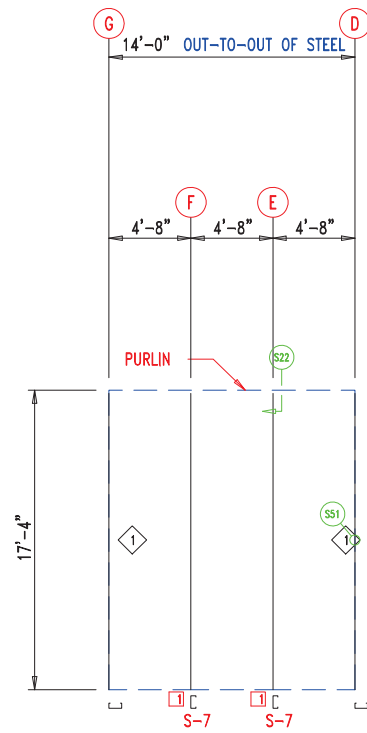
TRIM TABLE			
ID	PART	LENGTH	DETAIL
1	FL49	3'-0"	TRIM_320



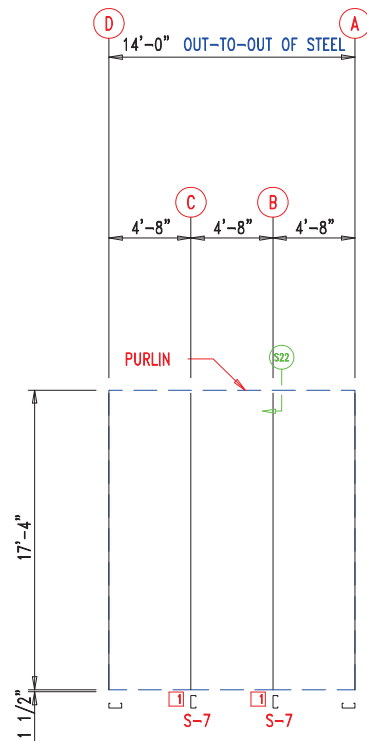
**ROOF SHEETING & TRIM**  
 PANELS: 26 Ga. PR - Galvalume+ w/ Drip Stop



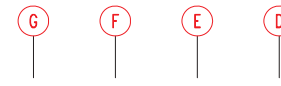
 <p>PELLA BUILDING SYSTEMS</p> <p>906 West 9th Street Pella, IA 50219 (800) 225-0481 www.pellabuildings.com</p>	DESCRIPTION: ROOF SHEETING		
	CUSTOMER: MEGA Storage	PROJECT: LEE'S SUMMIT	
	LOCATION: LEE'S SUMMIT MO		
	DRN. BY: JB	CK'D BY:	DATE: 8/23/22
SCALE: N.T.S.	REV.: 00	QUOTATION NO.: K	SHEET NO.: 9 OF 14



WALL FRAMING  
 FRAME LINE: 7 (Typ of 4)  
 GRID LINES: (D-P)

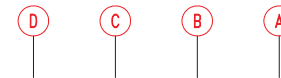


WALL FRAMING  
 FRAME LINE: 7



13'-10"
13'-10"
13'-10"
13'-10"
13'-10"
13'-10"

WALL SHEETING & TRIM  
 FRAME LINE: 7 (Typ of 4)  
 GRID LINES: (D-P)  
 PANELS: 29 Ga. PR - Galvalume +



13'-10"
13'-10"
13'-10"
13'-10"
13'-10"
13'-10"


WALL SHEETING & TRIM  
 FRAME LINE: 7  
 PANELS: 29 Ga. PR - Galvalume +

MEMBER TABLE		
MARK	PART	LENGTH
S-7	6X2C16	17'-4"

ANGLE TABLE		
◇ ID	MARK	LENGTH
1	STUD	10'-0"

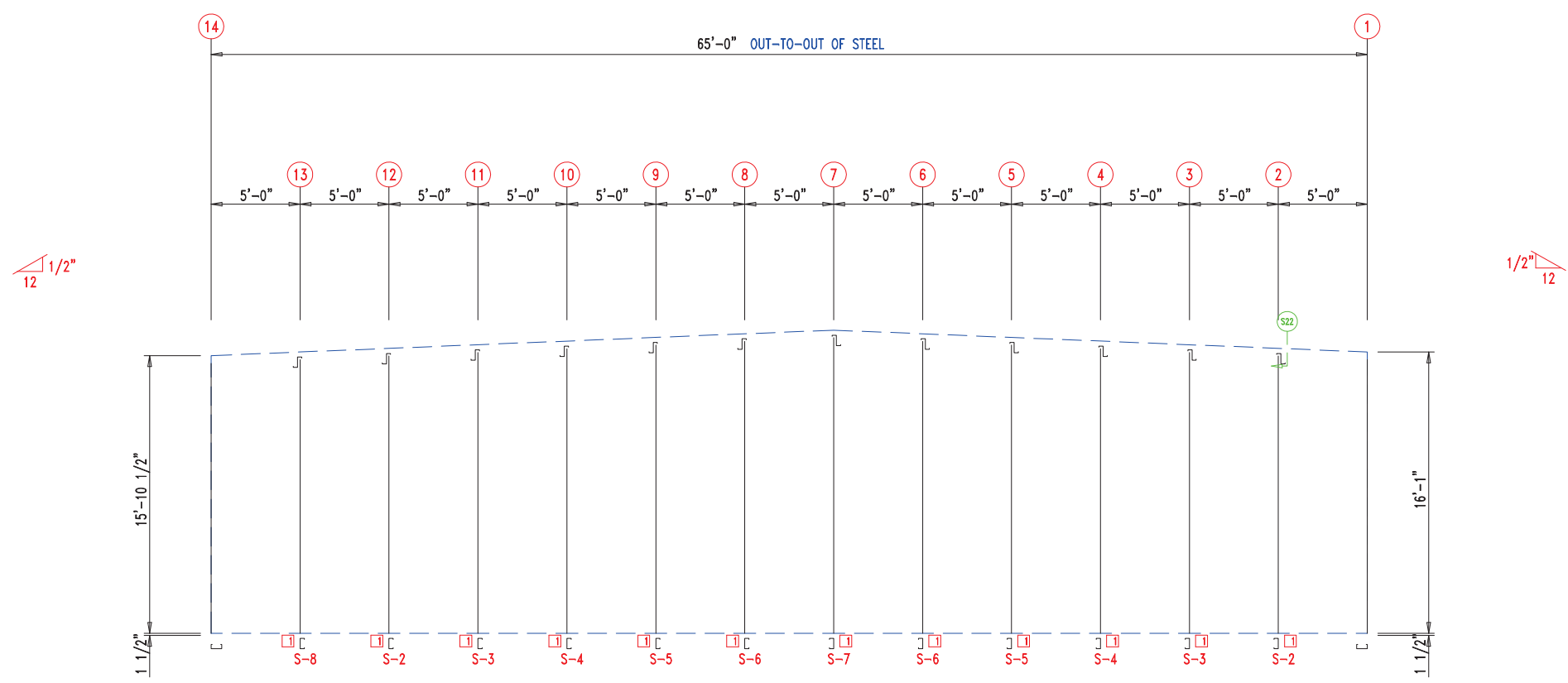
CONNECTION PLATES	
□ ID	MARK/PART
1	BASECLIP



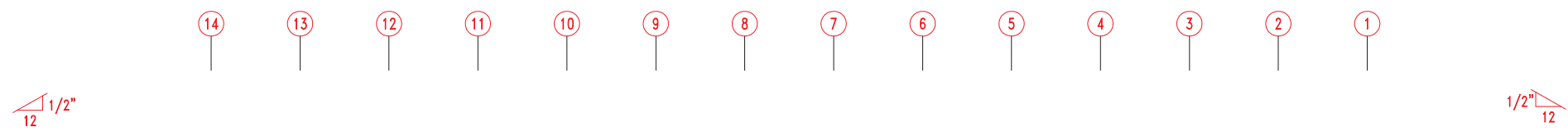
 <p>906 West 9th Street Pella, IA 50219        (800) 225-0481 www.pellabuildings.com</p>	DESCRIPTION: PARTITION DRAWING		CUSTOMER: MEGA Storage		PROJECT: LEE'S SUMMIT				
	LOCATION: LEE'S SUMMIT MO		DRN. BY: JB	CK'D BY:	DATE: 8/23/22	SCALE: N.T.S.	REV. 00	QUOTATION NO. K	SHEET NO. 10 OF 14

MEMBER TABLE		
MARK	PART	LENGTH
S-2	6X2C16	16'-3 1/2"
S-3	6X2C16	16'-6"
S-4	6X2C16	16'-8 1/2"
S-5	6X2C16	16'-11"
S-6	6X2C16	17'-1 1/2"
S-7	6X2C16	17'-4"
S-8	6X2C16	16'-1"

CONNECTION PLATES	
ID	MARK/PART
1	BASECLIP




WALL FRAMING FRAME LINE: (Typ of 4)

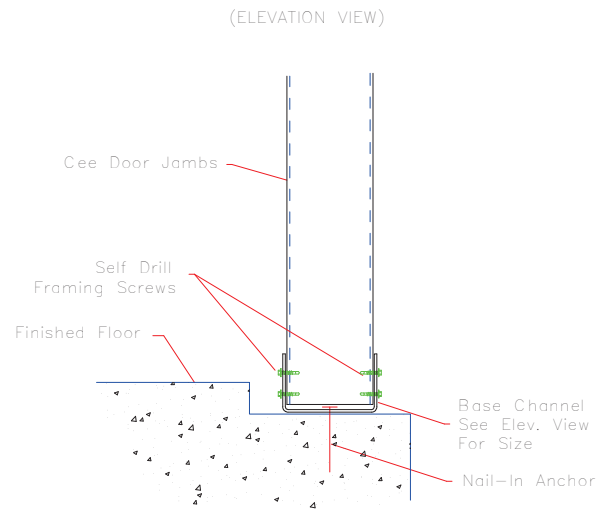


20'-0"	25'-2"	20'-0"
20'-0"	25'-2"	20'-0"
20'-0"	25'-2"	20'-0"
20'-0"	25'-2"	20'-0"
20'-0"	25'-2"	20'-0"
20'-0"	25'-2"	20'-0"

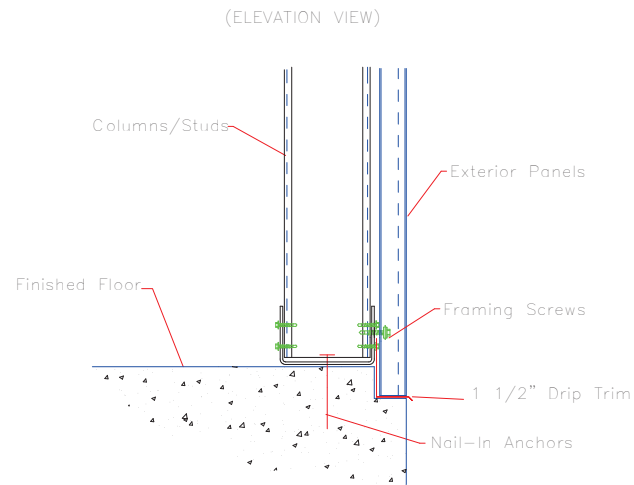
WALL SHEETING & TRIM FRAME LINE: (Typ of 4)  
PANELS: 29 Ga. PR - Galvalume +



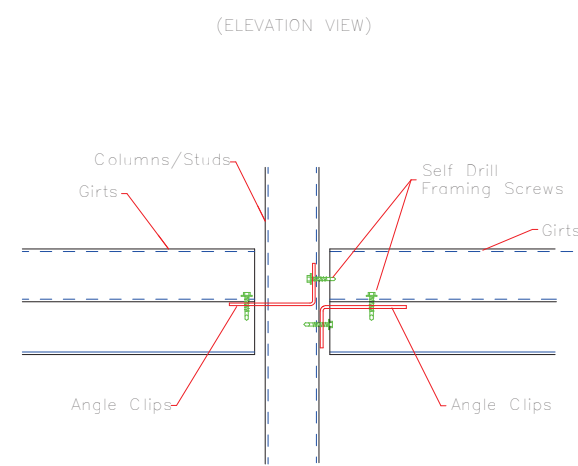
 <p>PELLA BUILDING SYSTEMS 906 West 9th Street Pella, IA 50219 (800) 225-0481 www.pellabuildings.com</p>	DESCRIPTION: PARTITION DRAWING	
	CUSTOMER: MEGA Storage	PROJECT: LEE'S SUMMIT
	LOCATION: LEE'S SUMMIT MO	
	DRN. BY: JB	CK'D BY: JB
SCALE: N.T.S.	REV. 00	QUOTATION NO. K
SHEET NO. 11 OF 14		



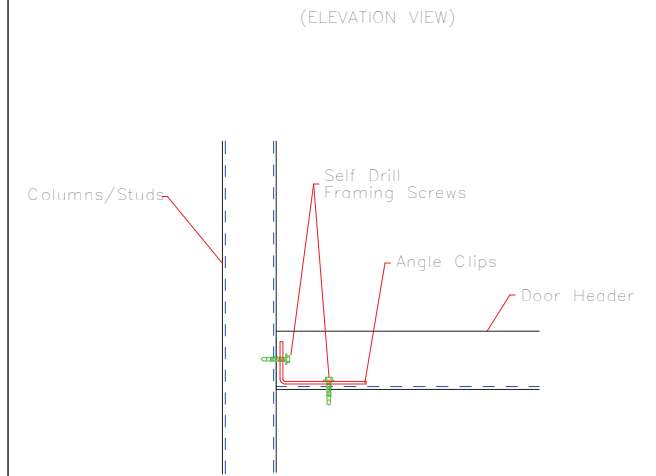
S2 BASE @ DOOR JAMB



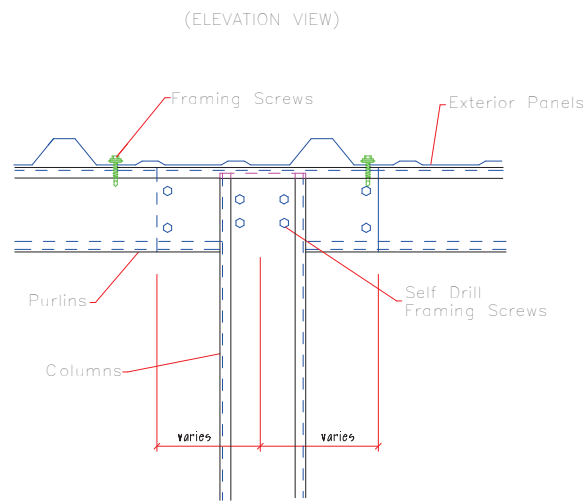
S4 COLUMN BASE @ SHEETED WALL



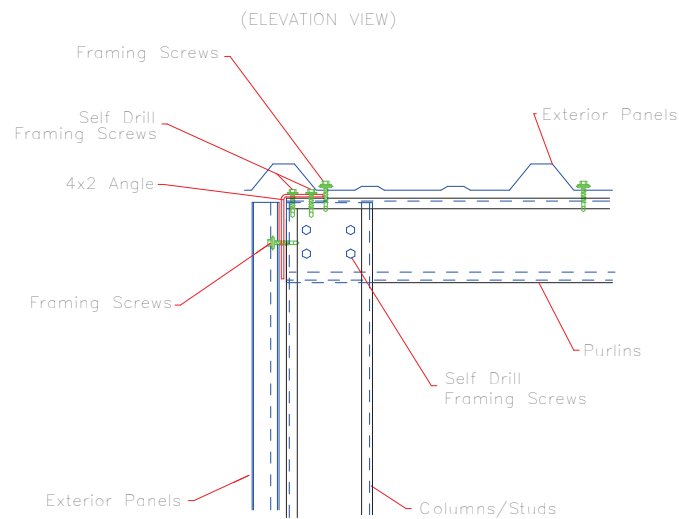
S11 GIRT CONNECTION



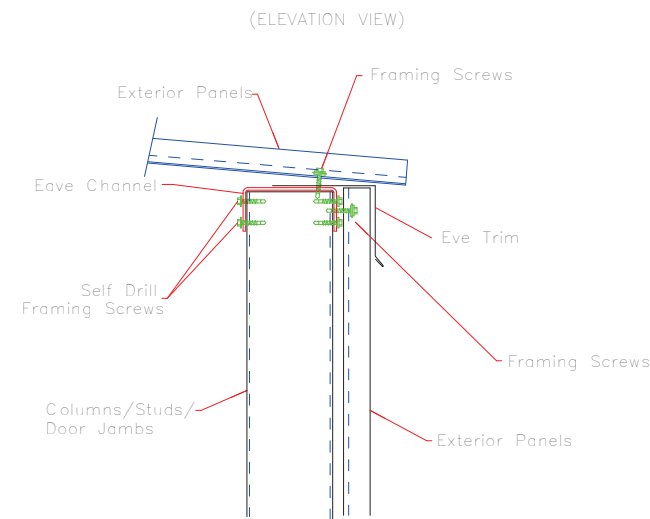
S12 DOOR HEADER TO JAMB



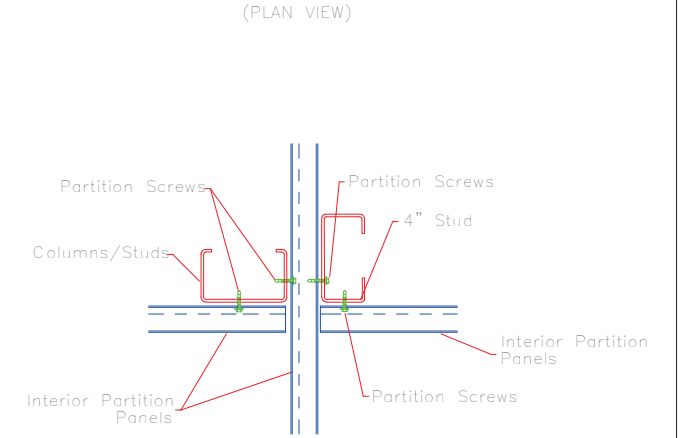
S22 COLUMN TO PURLIN @ LAP



S24 RAKE @ SHEETED ENDWALL



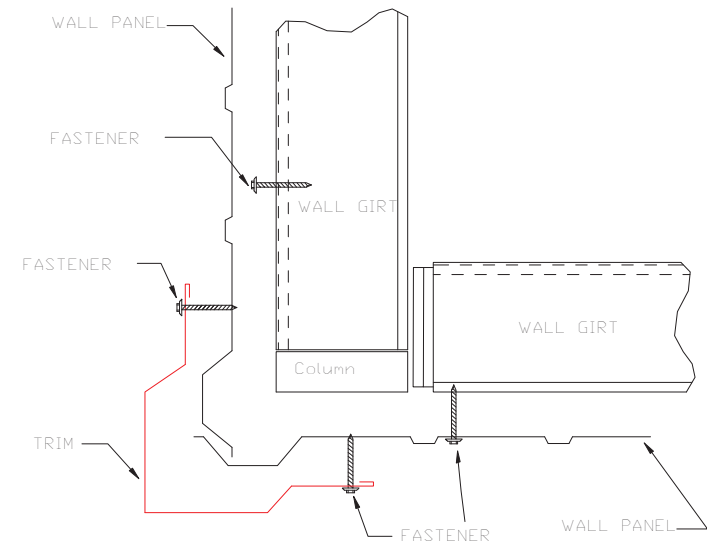
S31 EAVE



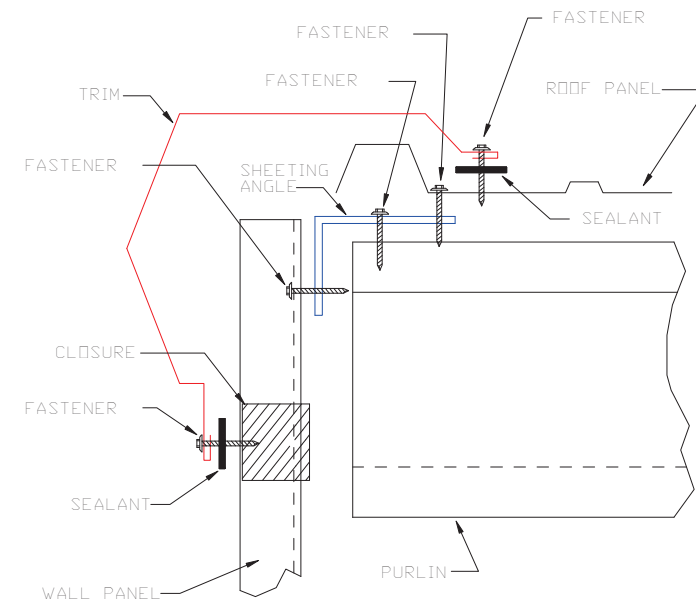
S51 PARTITION



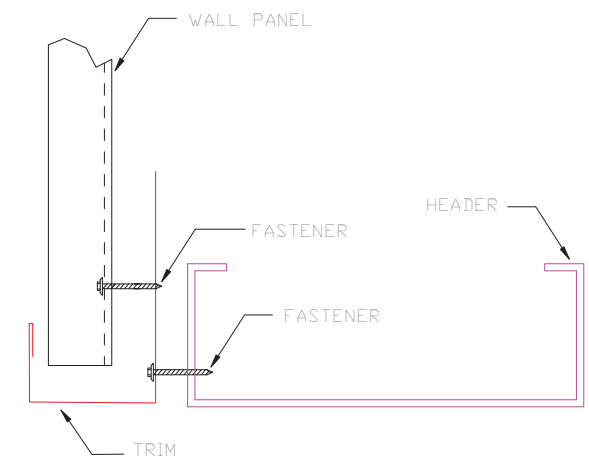
DESCRIPTION: DETAIL DRAWINGS							
CUSTOMER: MEGA Storage				PROJECT: LEE'S SUMMIT			
LOCATION: LEE'S SUMMIT MO							
DRN. BY	CK'D BY	DATE	SCALE	REV.	QUOTATION NO.	SHEET NO.	
JB		8/23/22	N.T.S.	00	K	12	OF 14



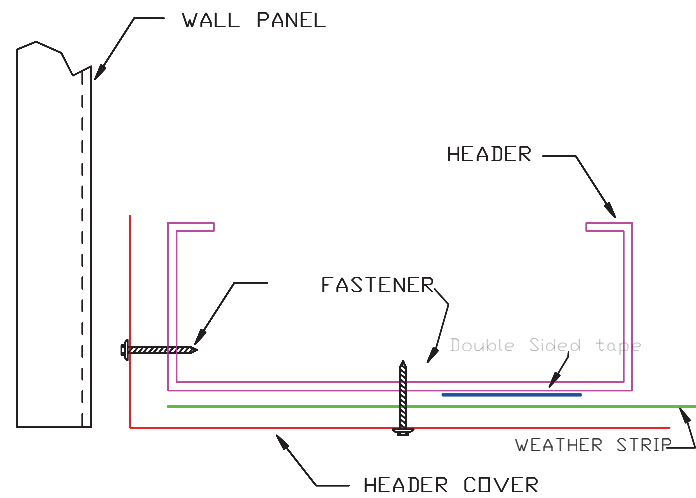
OUTSIDE CORNER  
TRIM\_198



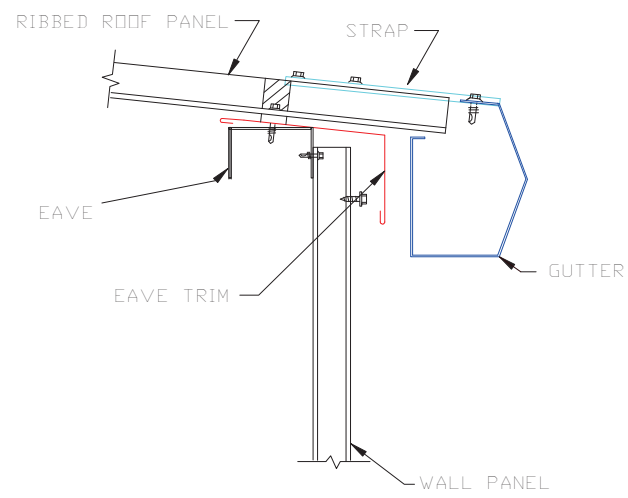
GABLE  
TRIM\_229



HEADER  
TRIM\_232



HEADER COVER  
TRIM\_235



GUTTER FLASHING  
TRIM\_317



DESCRIPTION: DETAIL DRAWINGS							
CUSTOMER: MEGA Storage				PROJECT: LEE'S SUMMIT			
LOCATION: LEE'S SUMMIT MO							
DRN. BY	CK'D BY	DATE	SCALE	REV.	QUOTATION NO.	SHEET NO.	
JB		8/23/22	N.T.S.	00	K	13 OF 14	