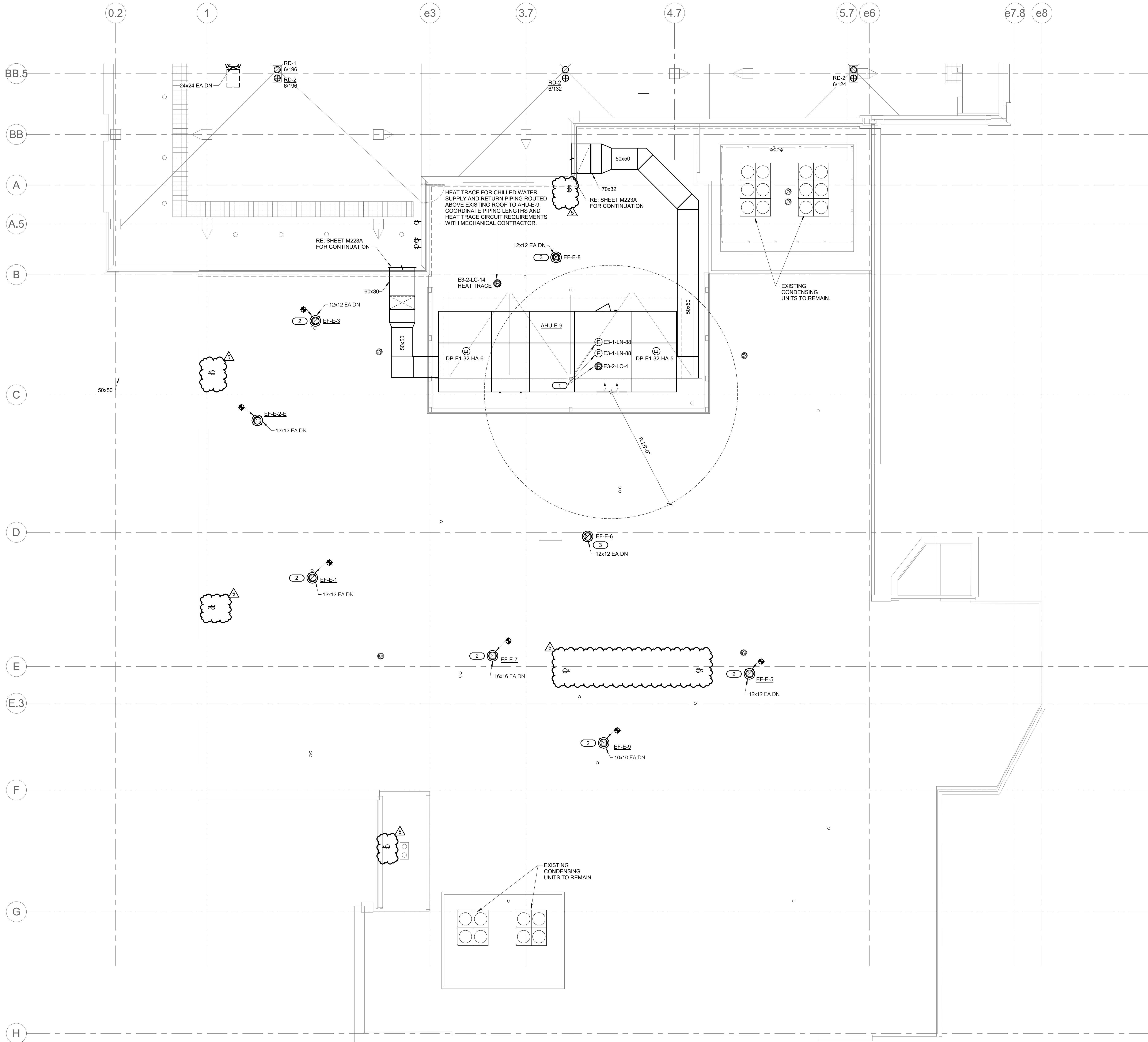




1

## ROOF PLAN - MECHANICAL AND ELECTRICAL - AREA B

1/8" = 1'-0"

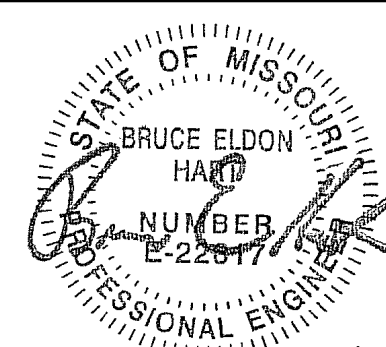


## SHEET NOTES:

- REFER TO SHEET M000 FOR SYMBOLS AND GENERAL NOTES.
- REFER TO SHEET E000 FOR ELECTRICAL SYMBOLS AND GENERAL NOTES.
- AHU-E-9, AHU-E-8, LAB AIR COMPRESSOR, DUPLEX CONDENSATE PUMP, EXHAUST FANS EF-17 AND EF-18, AND TWO CONDENSING UNITS FURNISHED WITH I.T. IN-SHOW COOLERS BY EC SHALL BE CONNECTED TO NEW DISTRIBUTION PANEL DP-E1-32-HA-4.
- EXHAUST FANS EF-15 AND EF-16 SHALL BE CONNECTED TO NEW PANEL 'E3-4-LN'.
- EXISTING EXHAUST FANS EF-10 AND EF-11 ARE BEING REPLACED AND RELOCATED TO NEW HIGHER ROOF. NEW FANS SHALL BE RECONNECTED TO EXISTING CIRCUITS SERVING THEM - EXTEND CIRCUITS AS REQUIRED.
- EXISTING EXHAUST FANS EF-1, 2, 3, 5, 6, 7, 8 AND 9 ARE BEING REPLACED IN SAME LOCATION. EXISTING CIRCUIT SERVING EACH SHALL BE RECONNECTED TO NEW FAN.

## KEYNOTES: (#)

- CIRCUITS SHOWN FOR LIGHTS, POWER AND UV SYSTEM IN AIR HANDLING UNIT. COORDINATE WITH MECHANICAL CONTRACTOR.
- RE-USE EXISTING ELECTRICAL CONNECTION TO NEW EXHAUST FAN.
- CONNECT RELOCATED EXHAUST FAN TO EXISTING CIRCUIT. REFER TO SHEET E212B FOR MORE INFORMATION.



1/16/2023

Bruce E. Hart - Engineer  
License - Missouri #E-22817**ACI**  
**BOLAND**  
ARCHITECTSACI/Boland, Inc.  
Kansas City | St. Louis  
1710 Wyandotte  
Kansas City, MO 64108  
T: 816.763.9600Licensee's Certificate of Authority Number:  
Missouri: #000958CONSTRUCTION  
DOCUMENTS**Saint Luke's**

EAST HOSPITAL

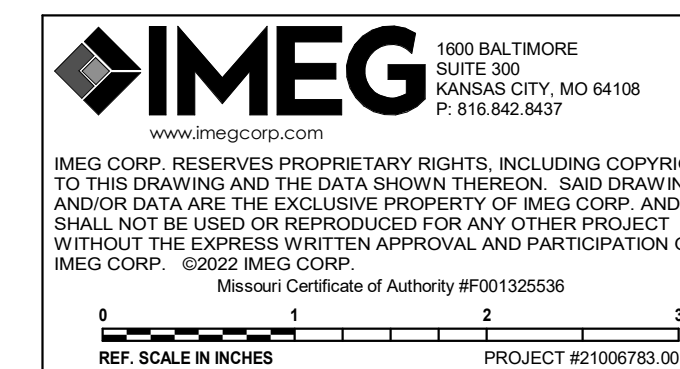
ASC EXPANSION &amp; RENOVATION

100 NE Saint Luke's Blvd

Lee's Summit, MO 64086

Date 01/16/2023  
Job Number 3-21037  
Drawn By MJO/MJL/CL  
Checked By MJL/BEH

Number	Date	Description
3	2/24/23	Addendum 3
5	3/29/23	Revision 5



MPE234B

© 2023 ACI/BOLAND, Inc.  
ROOF PLAN - MECHANICAL  
PLUMBING AND ELECTRICAL - AREA B