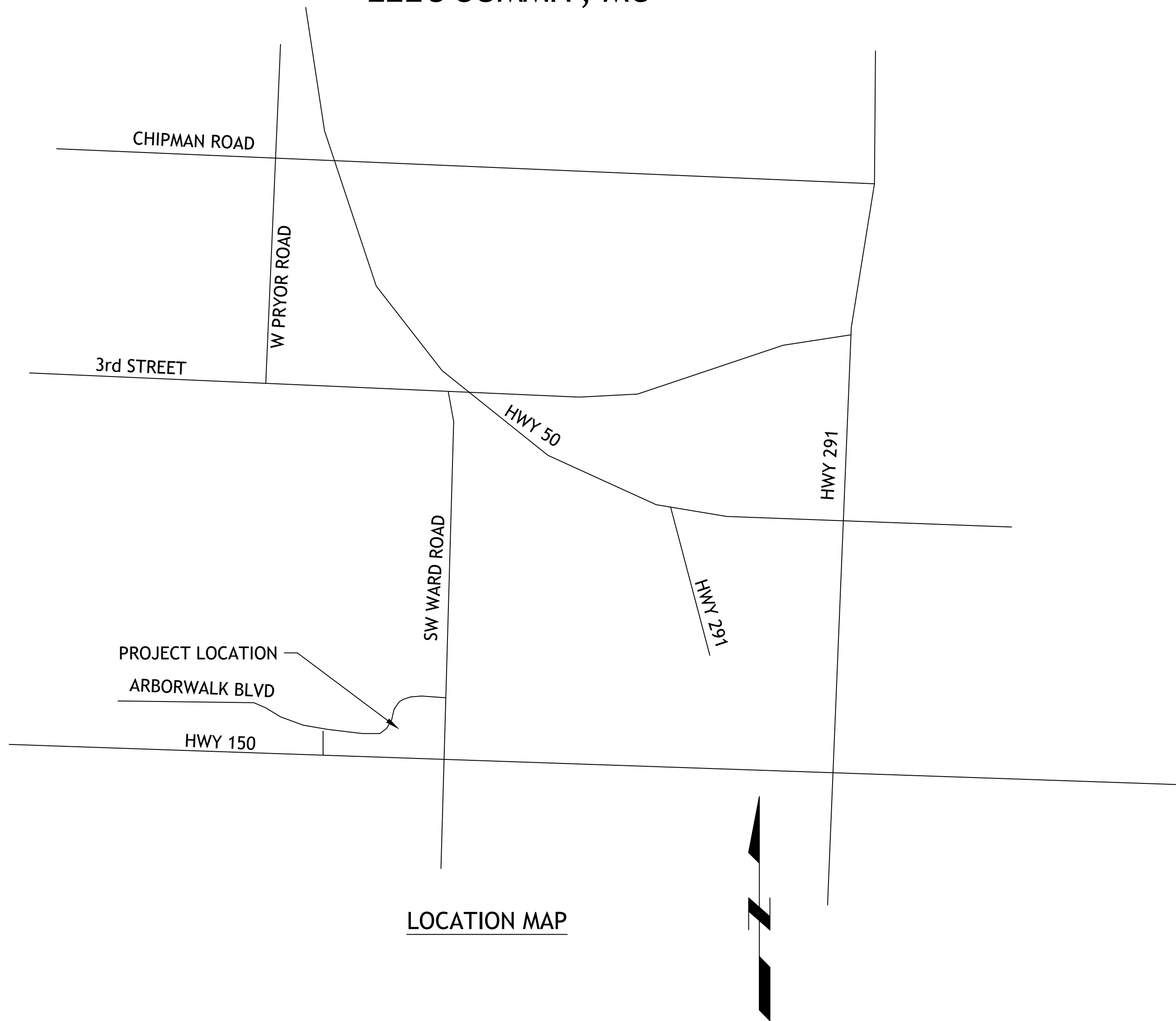


# LAND DISTURBANCE PLANS TO SERVE ARBORWALK EAST

LEE'S SUMMIT, MO



LOCATION MAP



UTILITIES  
Electric Service  
Evergy  
Nathan Michael  
913-347-4310  
Nathan.michael@evergy.com

Gas Service  
Spire  
Katie Darnell  
816-969-2247  
Katie.darnell@spireenergy.com

Water/Sanitary Sewer  
Water Utilities Department  
1200 SE Hamblen Road  
Lee's Summit, Mo 64081  
Jeff Thorn  
816-969-1900  
jeff.thorn@cityofls.net

Communication Service  
AT&T Carrie Cilke  
816-703-4386  
cc3527@att.com

Time Warner Cable  
Steve Baxter  
913-643-1928  
steve.baxter@charter.com

Comcast  
Ryan Alkire  
816-795-2218  
ryan.alkire@cable.comcast.com

Google Fiber  
Becky Davis  
913-725-8745  
rebeccadavis@google.com

#### UTILITY STATEMENT:

THE UNDERGROUND UTILITIES SHOWN HEREON ARE FROM FIELD SURVEY INFORMATION OF ONE-CALL LOCATED UTILITIES, FIELD SURVEY INFORMATION OF ABOVE GROUND OBSERVABLE EVIDENCE, AND/OR THE SCALING AND PLOTTING OF EXISTING UTILITY MAPS AND DRAWINGS AVAILABLE TO THE SURVEYOR AT THE TIME OF SURVEY. THE SURVEYOR MAKES NO GUARANTEE THAT THE UNDERGROUND UTILITIES SHOWN COMPRISE ALL SUCH UTILITIES IN THE AREA, EITHER IN SERVICE OR ABANDONED. FURTHERMORE, THE SURVEYOR DOES NOT WARRANT THAT THE UNDERGROUND UTILITIES SHOWN ARE IN THE EXACT LOCATION INDICATED ALTHOUGH HE DOES CERTIFY THAT THEY ARE LOCATED AS ACCURATELY AS POSSIBLE FROM INFORMATION AVAILABLE. THE SURVEYOR HAS NOT PHYSICALLY LOCATED THE UNDERGROUND UTILITIES BY EXCAVATION UNLESS OTHERWISE NOTED ON THIS SURVEY.

#### SAFETY NOTICE TO CONTRACTOR

IN ACCORDANCE WITH GENERALLY ACCEPTED CONSTRUCTION PRACTICE, THE CONTRACTOR WILL BE SOLELY AND COMPLETELY RESPONSIBLE FOR CONDITIONS OF THE JOB SITE, INCLUDING SAFETY OF ALL PERSONS AND PROPERTY DURING PERFORMANCE OF THE WORK. THIS REQUIREMENT WILL APPLY CONTINUOUSLY AND NOT BE LIMITED TO NORMAL WORKING HOURS.

#### WARRANTY/DISCLAIMER

THE DESIGNS REPRESENTED IN THESE PLANS ARE IN ACCORDANCE WITH ESTABLISHED PRACTICES OF CIVIL ENGINEERING FOR THE DESIGN FUNCTIONS AND USES INTENDED BY THE OWNER AT THIS TIME. HOWEVER, NEITHER SM ENGINEERING NOR ITS PERSONNEL CAN OR DO WARRANTY THESE DESIGNS OR PLANS AS CONSTRUCTED, EXCEPT IN THE SPECIFIC CASES WHERE SM ENGINEERING PERSONNEL INSPECT AND CONTROL THE PHYSICAL CONSTRUCTION ON A CONTEMPORARY BASIS AT THE SITE.

#### CAUTION- NOTICE TO CONTRACTOR

THE CONTRACTOR IS SPECIFICALLY CAUTIONED THAT THE LOCATION AND/OR ELEVATION OF EXISTING UTILITIES AS SHOWN ON THESE PLANS IS BASED ON RECORDS OF THE VARIOUS UTILITY COMPANIES AND, WHERE POSSIBLE, MEASUREMENTS TAKEN IN THE FIELD. THE INFORMATION IS NOT TO BE RELIED ON AS BEING EXACT OR COMPLETE. THE CONTRACTOR MUST CALL THE APPROPRIATE UTILITY COMPANY AT LEAST 72 HOURS BEFORE ANY EXCAVATION TO REQUEST EXACT FIELD LOCATION OF UTILITIES. IT SHALL BE THE RESPONSIBILITY OF THE CONTRACTOR TO RELOCATE ALL EXISTING UTILITIES WHICH CONFLICT WITH PROPOSED IMPROVEMENTS SHOWN ON THE PLANS. THE CONTRACTOR SHALL EXPOSE EXISTING UTILITIES AT LOCATIONS OF POSSIBLE CONFLICTS PRIOR TO ANY CONSTRUCTION.

#### NOTES

- ALL CONSTRUCTION SHALL FOLLOW THE CITY OF LEE'S SUMMIT DESIGN AND CONSTRUCTION MANUAL AS ADOPTED BY ORDINANCE 5813. WHERE DISCREPANCIES EXIST BETWEEN THESE PLANS AND THE DESIGN AND CONSTRUCTION MANUAL, THE MORE STRINGENT SHALL PREVAIL.
- THERE ARE NO GAS/OIL WELLS PER MDNR DATABASE OF OIL AND GAS PERMITS.
- THE CONTRACTOR SHALL CONTACT THE CITY DEVELOPMENT SERVICES ENGINEERING INSPECTION TO SCHEDULE A PRE-CONSTRUCTION MEETING WITH A FIELD ENGINEERING INSPECTOR PRIOR TO ANY LAND DISTURBANCE WORK AT 816-969-1200.
- THESE PLANS ARE FOR TREE REMOVAL ONLY. ADDITIONAL PLANS WILL BE PROVIDED FOR SUBSEQUENT GRADING OPERATIONS.

#### INDEX OF SHEETS

- C-1 COVER SHEET
- C-2 EROSION CONTROL PLAN
- C-3 DETAILS

#### DEVELOPER

MARTIN CITY PARTNERS, LLC  
7217 W 110TH STREET  
OVERLAND PARK, KS 66210  
CONTACT: GARRETT FUGATE  
PHONE: 913.649.4500  
EMAIL: GARRET@CHRISTIEDEV.COM

#### ENGINEER

SM ENGINEERING  
SAM MALINOWSKY  
5507 HIGH MEADOW CIRCLE  
MANHATTAN KANSAS, 66503  
SMCIVILENGR@GMAIL.COM  
785.341.9747

#### SURVEYOR

J & J SURVEY, INC.  
6500 NW TOWER DR SUITE 102  
PLATTE WOODS, MO 64151  
816-741-1017



SAMUEL D. MALINOWSKY  
PROFESSIONAL ENGINEER

SM Engineering  
5507 High Meadow Circle  
Manhattan Kansas, 66503  
smcivilengr@gmail.com  
785.341.9747

Drawings and/or Specifications are original proprietary work and property of the Engineer and intended specifically for this project. Use of items contained herein without consent of the Engineer is prohibited. Drawings illustrate best information available to the Engineer. Field verification of actual elements, conditions, and dimensions is required.

Revisions

LAND DISTURBANCE  
ARBORWALK EAST  
LEE'S SUMMIT, MO.

s h e e t  
C1.0  
Civil  
COVER SHEET  
permit  
20 MARCH 2023



1. Prior to Land Disturbance activities, the following shall occur:
  - a) Identify the limits of construction on the ground with easily recognizable indications such as construction staking, construction fencing and placement of physical barriers or other means acceptable to the City inspector and in conformance with the erosion and pollution control plan;
  - b) Construct a stabilized entrance/parking/staging area;
  - c) Install perimeter controls and protect any existing stormwater inlets;
  - d) Request an initial inspection of the installed Phase I pollution control measures designated on the approved erosion and pollution control plan. Land disturbance work shall not proceed until there is a passed inspection

a) Immediate initiation of temporary stabilization BMPs on disturbed areas where construction activities have temporarily ceased on that portion of the project site if construction activities will not resume for a period exceeding 14 calendar days. Temporary stabilization may include establishment of vegetation, geotextiles, mulches or other techniques to reduce or eliminate erosion until either final stabilization can be achieved or until further construction activities take place to re-disturb the area. This stabilization must be completed within 14 calendar days;

b) Inspection of erosion and sediment control measures shall be performed to meet or exceed the minimum inspection frequency in the MoDNR General Permit. At a minimum, inspections shall be performed during all phases of construction at least once every 14 days and within 24 hours of each precipitation event

c) An inspection log shall be maintained and shall be available for review by the regulatory authority;

d) The erosion and pollution control plan shall be routinely updated to show all modifications and amendments to the original plan. A copy of the erosion and pollution control plan shall be kept on site and made available for review by the regulatory authority.

3. Temporary seeding shall only be used for periods not to exceed 12 months. For final stabilization,

temporary seeding shall only be used to establish vegetation outside the permanent seeding or sodding dates as specified in the Standard Specifications. Final stabilization requires a uniform perennial vegetative cover with a density of 70% over 100% of disturbed area.

4. Erosion and pollution control shall be provided for the duration of a project. All installed erosion and pollution control BMPs shall be maintained in a manner that preserves their effectiveness. If the City determines that the BMPs in place do not provide adequate erosion and pollution control at any time during the project, additional or alternate measures that provide effective control shall be required.

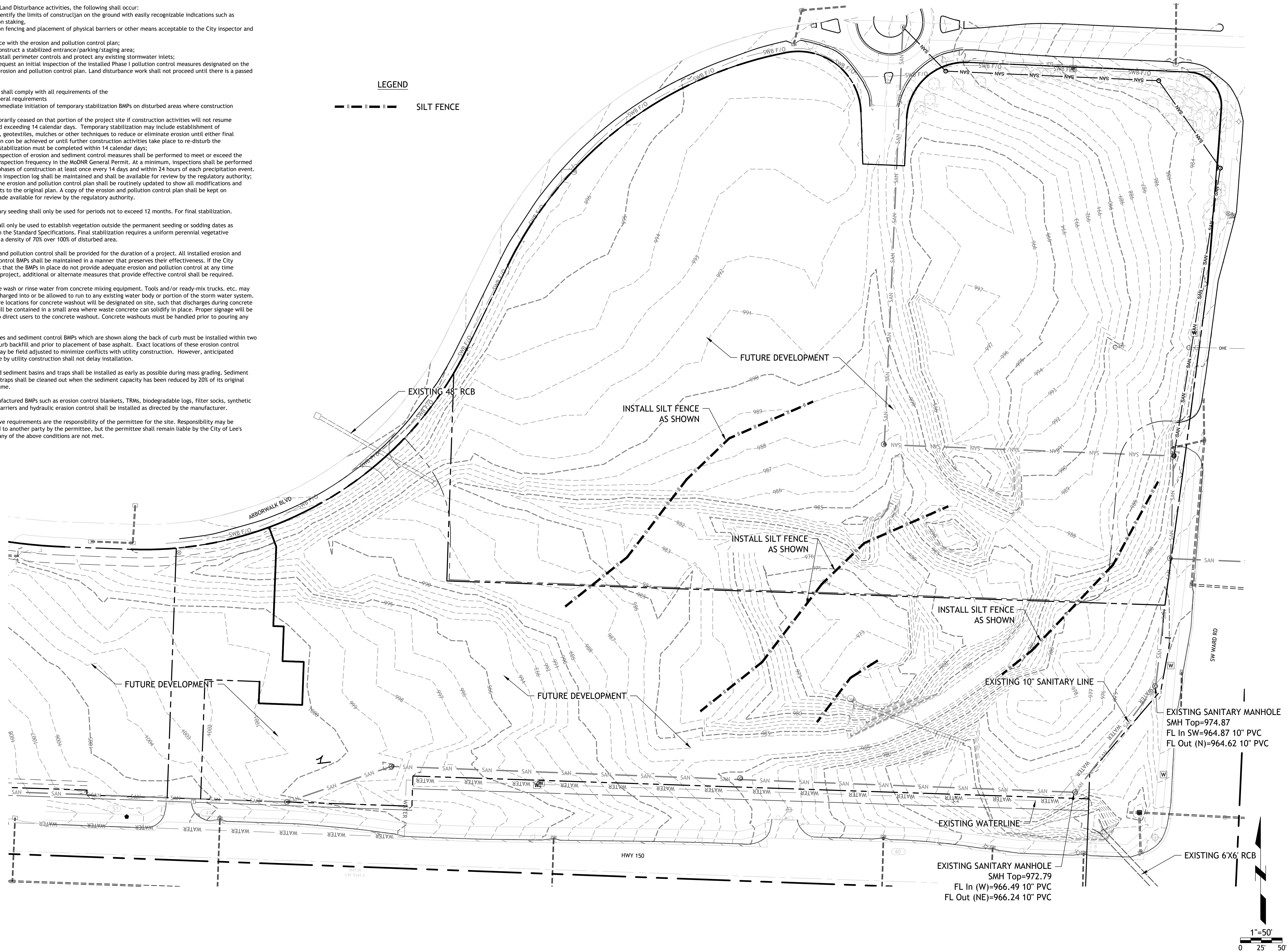
5. Concrete wash or rinse water from concrete mixing equipment. Tools and/or ready-mix trucks, etc. may not be discharged into or be allowed to run to any existing water body or portion of the storm water system. One or more locations for concrete washout will be designated on site, such that discharges during concrete washout will be contained in a small area where waste concrete can solidify in place. Proper signage will be installed to direct users to the concrete washout. Concrete washouts must be handled prior to pouring any concrete.

6. Silt fences and sediment control BMPs which are shown along the back of curb must be installed within two weeks of curb backfill and prior to placement of base asphalt. Exact locations of these erosion control methods may be field adjusted to minimize conflicts with utility construction. However, anticipated disturbance by utility construction shall not delay installation.

7. Required sediment basins and traps shall be installed as early as possible during mass grading. Sediment basins and traps shall be cleaned out when the sediment capacity has been reduced by 20% of its original design volume.

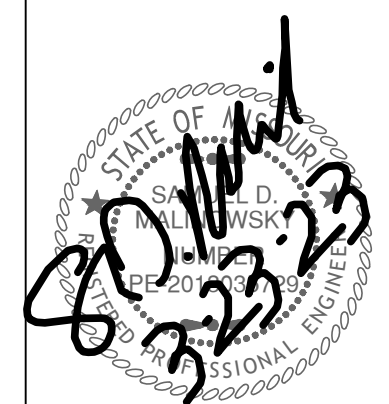
8. All manufactured BMPs such as erosion control blankets, TRMs, biodegradable logs, filter socks, synthetic sediment barriers and hydraulic erosion control shall be installed as directed by the manufacturer.

9. The above requirements are the responsibility of the permittee for the site. Responsibility may be transferred to another party by the permittee, but the permittee shall remain liable by the City of Lee's Summit if any of the above conditions are not met.

 SILT FENCE

**SMC**  
5507 High Meadow Circle  
Manhattan Kansas, 66503  
smcivilengr@gmail.com  
785.341.9747

Drawings and/or Specifications are original proprietary work and property of the Engineer and intended specifically for this project. Use of items contained herein without consent of the Engineer is prohibited. Drawings illustrate best information available to the Engineer. Field verification of actual elements, conditions, and dimensions is required.

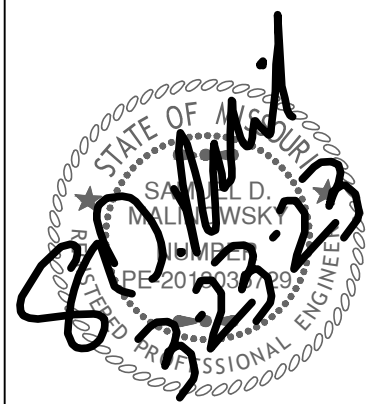


## Revisions

# LAND DISTURBANCE ARBORWALK EAST

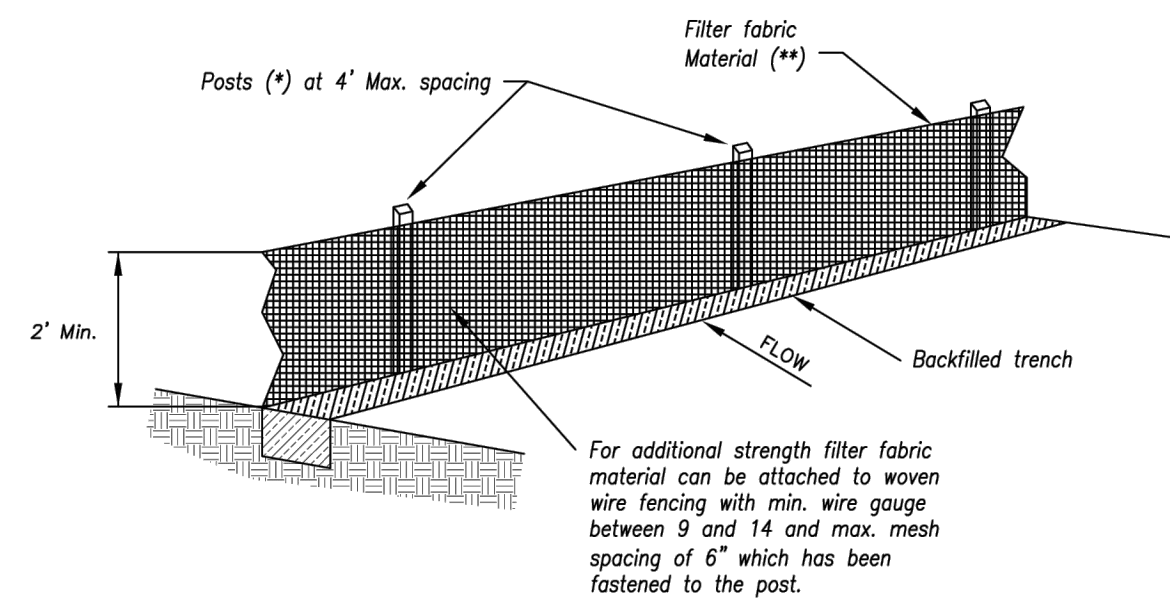
sheet  
C2.0  
Civil  
EROSION CONTROL  
permit  
20 MARCH 2023





Revisions

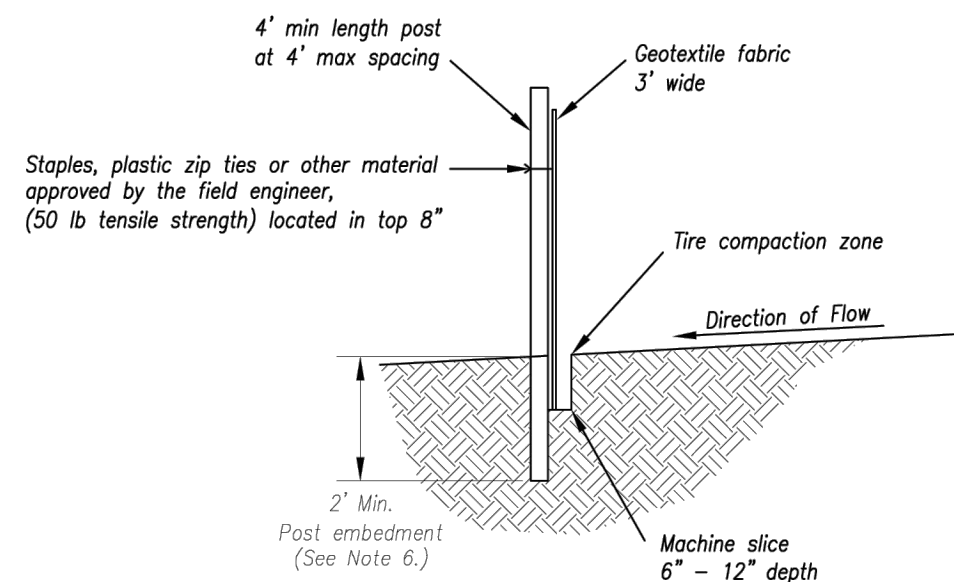
LAND DISTURBANCE  
ARBORWALK EAST  
LEES SUMMITT, MO.



- (\*) POSTS
- MIN. LENGTH 4'
  - HARDWOOD 1 3/4" x 1 3/8"
  - NO.2 SOUTHERN PINE 2 3/8" x 2 3/8"
  - STEEL 1.33 LB/FT

(\*\*) - Geotextile Fabric shall meet the requirements of AASHTO M288

**SILT FENCE DETAILS**  
Not to Scale



Notes:

1. In order to contain water, the ends of the silt fence must be turned uphill (Figure A).
2. Long perimeter runs of silt fence must be limited to 100'. Runs should be broken up into several smaller segments to minimize water concentrations (Figure A).
3. Long slopes should be broken up with intermediate rows of silt fence to slow runoff velocities.
4. Attach fabric to upstream side of post.
5. Install posts a minimum of 2' into the ground.
6. Trenching will only be allowed for small or difficult installation, where slicing machine cannot be reasonably used.

Maintenance:

1. Remove and dispose of sediment deposits when the deposit approaches 1/2 the height of silt fence.
2. Repair as necessary to maintain function and structure.

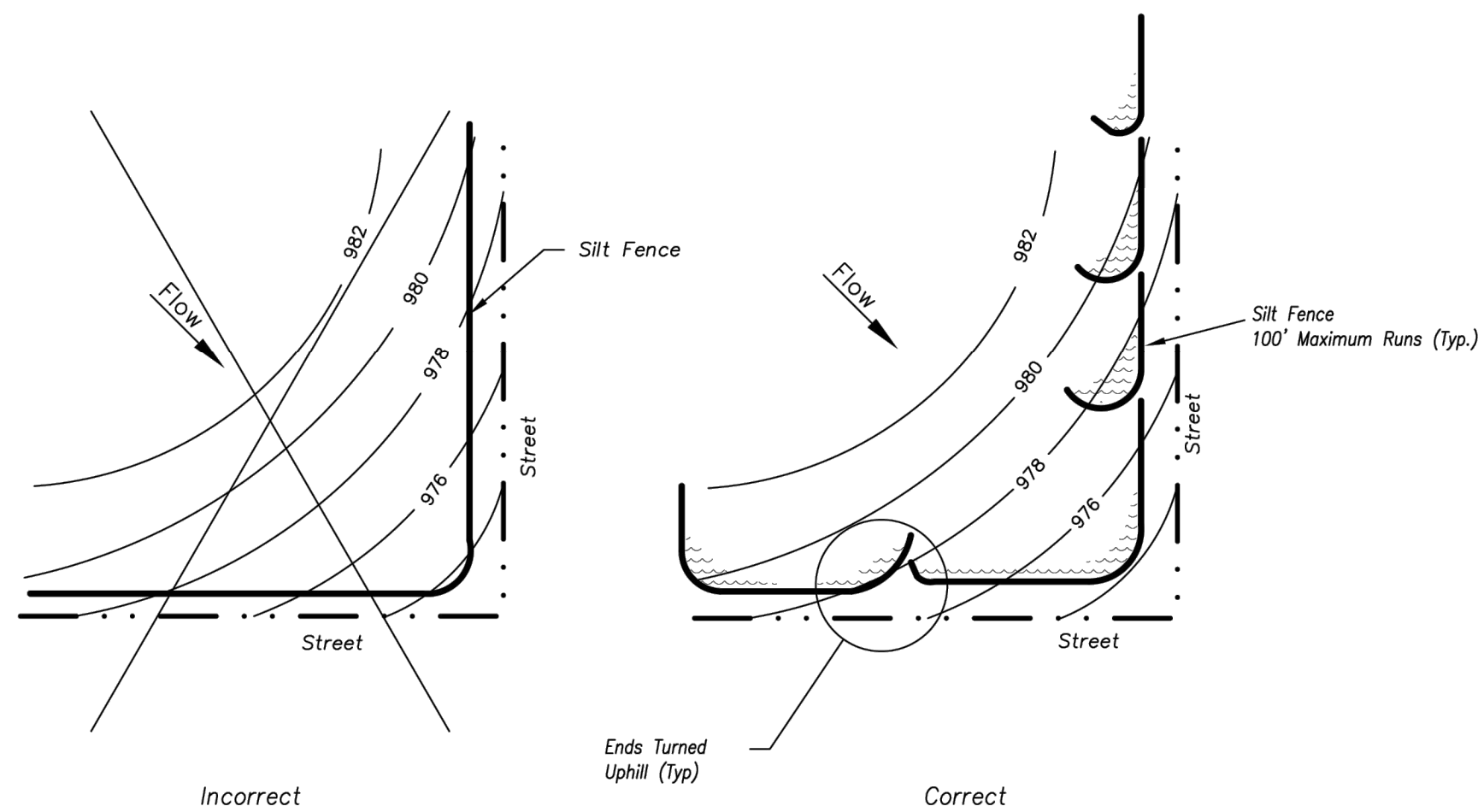
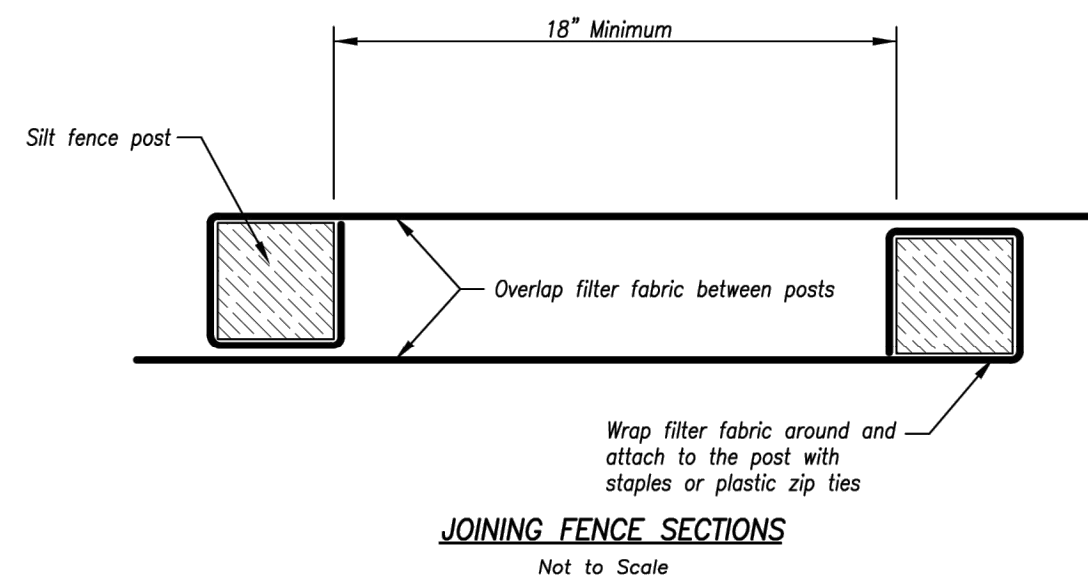
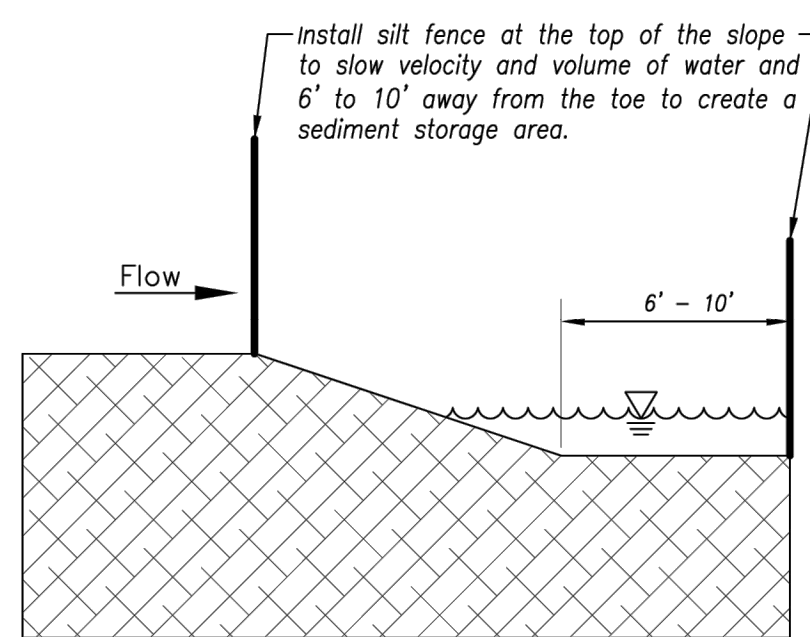



Figure A

**SILT FENCE LAYOUT**  
Not to Scale



AMERICAN PUBLIC WORKS ASSOCIATION	
	KANSAS CITY METRO CHAPTER
SILT FENCE	STANDARD DRAWING NUMBER ESC-03
	ADOPTED: 10/24/2016

Modified from 2015 Overland Park Standard Details for Erosion and Sediment Control.