

OCCUPANT LOAD				
NUMBER	ROOM NAME	AREA	OCC LOAD FACTOR	OCCUPANTS
100	WAITING	1004 SF	7	144
100B	REFRESHMENT	79 SF	7	12
102	RECEPTION	273 SF	150	2
103	CHECK-IN	58 SF	150	1
104	CHECK-IN	65 SF	150	1
105	ADMINISTRATION	410 SF	150	3
108	COMMS	75 SF	300	1
109	EXAM	105 SF	100	2
111	CONSULT	81 SF	100	1
115	PR 2	105 SF	100	2
116	PR 1	99 SF	100	1
117	PR 3	105 SF	100	2
118	NURSE STATION	239 SF	100	3
119	ALCOVE	28 SF	100	1
121	PR 4 - 23 HR	121 SF	100	2
122	MEDS	85 SF	100	1
124	PR 7	99 SF	100	1
125	PR 5 - 23 HR	121 SF	100	2
126	PR 8	99 SF	100	1
127	PR 6	105 SF	100	2
128	PR 9	99 SF	100	1
129	OFFICE 4	123 SF	150	1
131	NOURISH	48 SF	100	1
132	PR 1	102 SF	100	2
133	PR 4	99 SF	100	1
134	PR 2	97 SF	100	1
135	CLEAN	119 SF	100	2
136	PR 3	97 SF	100	1
137	STORAGE	174 SF	300	1
138	PR 5	97 SF	100	1
142	PR 6	97 SF	100	1
144	PR 7	97 SF	100	1
146	PR 8	97 SF	100	1
151	DICTATION	23 SF	100	1
152	GI PROCEDURE	340 SF	100	4
153	SCOPE DECON	172 SF	100	2
154	SCOPE STORAGE	73 SF	300	1
155	SCOPE REPROCESSING	111 SF	100	2
156	GI PROCEDURE	304 SF	100	4

OCCUPANT LOAD				
NUMBER	ROOM NAME	AREA	OCC LOAD FACTOR	OCCUPANTS
157	STORAGE	90 SF	300	1
161	OFFICE 3	92 SF	150	1
162	DICTATION	30 SF	100	1
163	OFFICE 2	92 SF	150	1
164	SOILED	80 SF	300	1
165	OFFICE 1	92 SF	150	1
166	STAFF LOUNGE	397 SF	150	3
167	CLEAN LINEN	64 SF	300	1
167.5	EQUIPMENT ALCOVE	36 SF	100	1
169	JAN	49 SF	300	1
171	STERILE ASSEMBLY	489 SF	100	5
172	NEPTUNE	38 SF	300	1
173	JANITOR	40 SF	300	1
174	SOILED HOLD	43 SF	300	1
175	WOMENS LOCKER ROOM	356 SF	50	8
176	PATH LAB	46 SF	100	1
177	MENS LOCKER ROOM	323 SF	50	7
178	ANESTH.	52 SF	100	1
179	ELEC	8 SF	300	1
180A	SCRUB SINK	8 SF	100	1
180B	SCRUB SINK	18 SF	100	1
181	OR 1	473 SF	100	5
182	DECON	252 SF	100	3
183	OR 2	445 SF	100	5
184	STERILIZERS	135 SF	300	1
185	OR 3	428 SF	100	5
186	STERILE STORAGE	418 SF	300	2
187	EQUIP. STORAGE	448 SF	300	2
189	STRETCHER ALCOVE	13 SF	100	1
191	TRASH	76 SF	300	1
192	RECEIVING	380 SF	300	2
195	MECH ROOM	441 SF	300	2
196	EM ELEC ROOM	151 SF	300	1
197	ELEC	70 SF	300	1
198	WATER ENTRY	55 SF	300	1
199	GAS STOR.	109 SF	300	1
Grand Total				287

AREA OF REFUGE CALCULATION			
SMOKE COMPARTMENT #1 (TOTAL REQUIRED AREA)	SMOKE COMPARTMENT #2 (TOTAL REQUIRED AREA)		
"DEFEND IN PLACE" (REMAIN IN SC#1) AREA PROVIDED FOR SC#1	"DEFEND IN PLACE" (REMAIN IN SC#2) AREA PROVIDED FOR SC#2	4,199 SF	2,316 SF
MOVE COMPARTMENTS, (TO COMPARTMENT #2) AREA PROVIDED FOR SC#2	MOVE COMPARTMENTS, (TO COMPARTMENT #1) AREA PROVIDED FOR SC#1	2,316 SF	4,199 SF
*PER 2018 IBC, SECTION 422.3.2			

CODE SUMMARY

PROJECT CONSTRUCTION PURPOSE: New Construction of an Ambulatory Surgery Center

OWNER:
Hennrich Partners Headquarters
1400 N. Water Street, Suite 500
Milwaukee, Wisconsin 53202DESIGNER:
ACI Boland Architects
1710 Wyandotte St.
Kansas City, MO 64108
Phone: (816) 763-9600LOCAL AUTHORITY:
RESPONDING FIRE SERVICE: Lee's Summit Fire Department
LOCAL BUILDING INSPECTION: Lee's Summit, Missouri - Codes Administration DepartmentCODE INFORMATION:
2018 INTERNATIONAL BUILDING CODE
2018 INTERNATIONAL PLUMBING CODE
2018 INTERNATIONAL MECHANICAL CODE
2018 INTERNATIONAL FIRE CODE
2018 INTERNATIONAL RESIDENTIAL CODE
2017 NATIONAL FUEL GAS CODE
2017 NATIONAL ELECTRIC CODE (NFPA 70)
2022 MISSOURI 19 CSR 30-30

2010 ADA STANDARDS FOR ACCESSIBLE DESIGN / AMERICANS WITH DISABILITIES ACT OF 1990

NOTE: IF CODE REQUIREMENTS OVERLAP, THE MOST STRINGENT SHALL APPLY.

TYPE OF CONSTRUCTION: IBC II (000) NFPA

Allowable Area
2018 IBC Table 506.2
Allowable Area
(Type I-B Sprinklered One Story)Allowable Height
2018 IBC Table 504.3
Building Height
(Type I-B Sprinklered)
2012 NFPA 5000 Table 7.4.1
Building Height
(Type I-B Sprinklered)

OCCUPANCY GROUP: B (Ambulatory Care Facility)

OCCUPANT LOAD:
TOTAL SQUARE FOOTAGE: SF / = 17,920 SF

TOTAL NUMBER OF OCCUPANTS = 284

EXIT ACCESS TRAVEL DISTANCE: 100' MAXIMUM

COMMON PATH OF TRAVEL: 149'-11"

AREA OF CONSTRUCTION:
+/- 17,920 SFREQUIRED FIRE RESISTANCE RATINGS (IN HOURS)
PER NFPA 101A.2.2.1.2EXTERIOR BEARING WALLS
INTERIOR BEARING WALLS
PRIMARY STRUCTURAL FRAME
FLOOR CONSTRUCTION
ROOF CONSTRUCTION
INTERIOR NON-BEARING WALLS

ACTIVE FIRE SAFETY FEATURES:

FIRE ALARM SYSTEM - THE FIRE ALARM SYSTEM IS SPECIFIED AS AN ADDRESSABLE TYPE SYSTEM. THE DEVICE TYPE AND LOCATIONS ARE PER THE APPLICABLE CODES AS WELL AS ADA REQUIREMENTS.

SMOKE CONTROL SYSTEM - ALL DUCTWORK PENETRATING SMOKE RATED WALLS WILL HAVE A SMOKE OR COMBINATION FIRE/SMOKE DAMPER AS INDICATED ON CONSTRUCTION DOCUMENTS. THESE DAMPERS WILL CLOSE UPON DETECTION OF SMOKE BY THE AREA SMOKE DETECTORS OR DUCT SMOKE DETECTORS IN THE AIR HANDLING UNITS.

FIRE SPRINKLER SYSTEM - SPECIFIED TO BE PER NFPA 13. THE SPRINKLER HEADS ARE SPECIFIED TO BE QUICK RESPONSE TYPE.

EMERGENCY LIGHTING AND POWER - EMERGENCY LIGHTING, LIFE SAFETY AND CRITICAL LOADS WILL RECEIVE POWER FROM A BACKUP GENERATOR LOCATED OUTSIDE THE MAIN ELECTRICAL ROOM.

ILLUMINATED EXIT SIGNS

PASSIVE FIRE SAFETY FEATURES:

SMOKE COMPARTMENTS NO GREATER THAN 22,500 SF

CODE FOOTPRINT LEGEND

PARTITION TYPES

- 0 HR SMOKE PARTITION (SMOKE RESISTIVE)
- 1 HR SMOKE BARRIER
- 1 HR FIRE BARRIER
- 2 HR FIRE BARRIER
- 2 HR FIRE SMOKE BARRIER
- 3 HR FIRE BARRIER

AREA DESIGNATIONS

- CORRIDOR
- HAZARDOUS ROOM
- EXIT ENCLOSURE
- SHAFT

BOUNDARY DESIGNATIONS

- SMOKE COMPARTMENT
1 HR SMOKE BARRIER
- NOT IN ARCHITECTURAL
SCOPE
- REFUGE AREA - SMOKE
COMPARTMENT #1
- REFUGE AREA - SMOKE
COMPARTMENT #2

SYMBOLS

- SC-1
SIZE SF
- S1
NON-SLEEP
SIZE SF
- FIRE EXIT
- OCCUPANT LOAD
- EXIT WIDTH PROVIDED
- EXIT WIDTH REQUIRED
- NEW FIRE EXTINGUISHER CABINET
- EXISTING FIRE EXTINGUISHER CABINET
- EXIT SIGN
- FIRE DOOR RATING
- TRAVEL DISTANCE
- FIRE/SMOKE DAMPER
- SMOKE DETECTOR
- HEAT DETECTOR
- STROBE
- STROBE/SPEAKER
- HORN/STROBE
- HORN
- FIRE PULL STATION
- FIRE SPRINKLER ZONE VALVE

Samuel K. Beckman - Architect
License - Missouri #A-2011012130ACI
BOLAND
ARCHITECTS1710 Wyandotte
Kansas City, MO 64108
T: 816.763.9600ACI/Boland, Inc.
Kansas City | St. Louis
Licensee's Certificate of Authority Number:

CIVIL CONSULTANT

BHC
7101 College Blvd. Ste. 400
Overland Park, KS 66210
913.663.1900

STRUCTURAL CONSULTANT

Bob D. Campbell & Co.
4338 Bellevue
Kansas City, MO 64111
816.531.4144

MEP CONSULTANT

Branch Pattern
1508 Grand Boulevard
Kansas City, MO 64108
913.951.8311Surgery Center of Lee's Summit
1950 SE Shenandoah Drive
Lee's Summit, MO 64063Date 02/08/23
Job Number 3-22030
Drawn By Author
Checked By CheckerRevision
Number 3 Date 3/9/23 Description Addendum #3

A0.2

© 2022 ACI/BOLAND, Inc.

CODE FOOTPRINT PLAN

*THIS DRAWING IS INTENDED TO BE PRINTED IN COLOR. USE BLACK AND WHITE COPIES AT YOUR OWN RISK.

A1 CODE FOOTPRINT PLAN
1/8" = 1'-0"



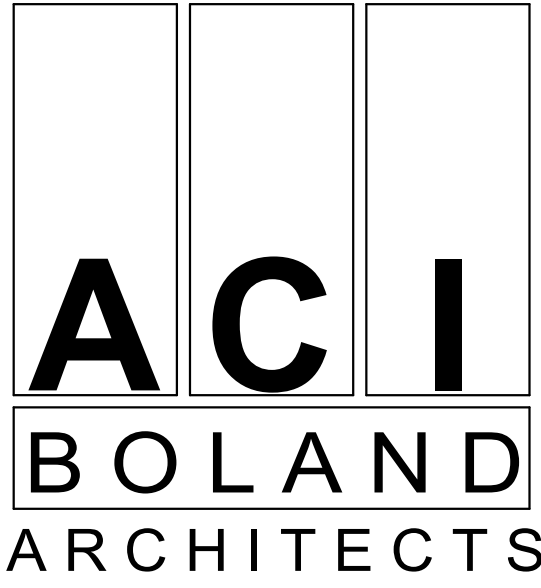
ACI
BOLAND
ARCHITECTS

UTILITY PLAN

Revision		
Number	Date	Description
1	2/14/23	Addendum 1
2	3/2/23	Addendum 3

FIRE PROTECTION GENERAL NOTES

- THE SPRINKLER SYSTEM SHALL BE PROVIDED IN ACCORDANCE WITH THE REQUIREMENTS OF NFPA-13, 2012 INTERNATIONAL FIRE CODE, 2012 INTERNATIONAL BUILDING CODE, ALL ELECTRICAL AND MECHANICAL EQUIPMENT ROOMS SHALL BE SPRINKLED AS ORDINARY HAZARD GROUP 2 (0.2 GPM/SQ. FT.). REFER TO FP101 FOR ADDITIONAL COVERAGE REQUIREMENTS. ALL SPRINKLERS SHALL BE QUICK RESPONSE TYPE UNLESS REQUIRED OTHERWISE BY CODE.
- PIPING SIZED BY HYDRAULIC CALCULATION METHOD IN ACCORDANCE WITH THE CURRENT EDITION OF NFPA 13 AND SHALL BE SO STATED IN THE SUBMITTAL.
- ALL FIRE PROTECTION WORK SHALL MEET ALL OF THE REQUIREMENTS OF NFPA AND LOCAL AND STATE AUTHORITIES HAVING JURISDICTION. ALL MATERIALS, METHODS, AND DESIGN SHALL BE PER CURRENT EDITION OF NFPA 13 AND SHALL BE SO STATED IN THE SUBMITTAL. FLUSH AND TEST SYSTEM IN ACCORDANCE WITH NFPA 13, 24 AND LOCAL CODES.
- THE CONTRACTOR SHALL SUBMIT A SEALED SET OF INSTALLATION "SHOP" DRAWINGS, HYDRAULIC CALCULATIONS AND MATERIAL DATA FOR THE ENGINEER'S REVIEW PRIOR TO CONSTRUCTION. ALL WORK TO BE COORDINATED WITH OTHER TRADES.
- SPRINKLER SYSTEMS SHALL BE INSTALLED BY PERSONNEL WHO HAVE ENGINEERING FACILITIES AND EXPERIENCE IN SUCH WORK AND WHO ARE REGULARLY EMPLOYED TO DO SUCH WORK.
- SPRINKLERS SHALL BE AS REQUIRED BY NFPA 13, WHERE EXCESSIVE TEMPERATURES ARE ANTICIPATED, HIGH TEMPERATURE HEADS SHALL BE INSTALLED IN ACCORDANCE WITH NFPA 13. THE CONTRACTOR SHALL INDICATE SPRINKLER TEMPERATURE RATING, ORifice SIZE AND TYPE ON FINAL DRAWINGS. SPRINKLERS IN FINISHED AREAS TO BE CONCEALED TYPE. SPRINKLER AND ESCUTCHEON TO BE CHROME PLATED IN UNFINISHED AREAS.
- COORDINATE EXACT LOCATION OF SPRINKLERS, PIPING AND EQUIPMENT WITH CEILING, ELECTRICAL, MECHANICAL AND STRUCTURAL COMPONENTS OF BUILDING. MAKE MODIFICATIONS WITHOUT ADDITIONAL COST TO THE OWNER.
- ALL MATERIAL SHALL BE UL LISTED AND NFPA APPROVED.
- REFER TO THE ARCHITECTURAL DRAWINGS FOR LOCATIONS OF ALL FIRE WALLS WHICH FIRE PROTECTION PIPING PENETRATES. FIRE PROTECTION PIPING SHALL BE FIRE SAFED IN AN APPROVED MANNER WHEN PENETRATING WALLS AND FLOORS. PROVIDE SLEEVES OR OTHER APPROVED MEANS AND SEAL OPENINGS IN WALLS, FLOORS, AND PARTITIONS IN SUCH A MANNER AS TO MAINTAIN THE SMOKE AND FIRE RATINGS OF THAT WALL, FLOOR OR CEILING.
- SPACING OF SPRINKLERS: THE SPACING AND SIZES OF PIPES SHALL CONFORM TO THE REQUIREMENTS OF NFPA 13. SPRINKLERS SHALL BE WITHIN 6" OF CENTER OF TILE. PROVIDE SWING JOINT IF REQUIRED TO ACCOMPLISH THIS. SPRINKLERS SHALL BE AT LEAST 6" FROM ANY CEILING FIXTURE. THE CONTRACTOR SHALL COORDINATE THE LOCATION OF SPRINKLERS AND PIPING WITH THE LIGHTING AND AIR DISTRIBUTION DRAWINGS. COORDINATE WITH ANY LIGHTING FIXTURES THAT MAY EXTEND BELOW THE CEILING TO AVOID OBSTRUCTION AS DEFINED BY NFPA 13.
- PIPING: SPRINKLER PIPING SHALL BE SCHEDULE 40 BLACK STEEL PIPE AND FITTINGS CONFORMING TO ASTM A-53. MINIMUM SIZE IS ONE INCH.
- PIPE SUPPORTS, HANGERS, CLAMPS, RODS AND OTHER ACCESSORIES: SHALL BE OF AN APPROVED TYPE AND IN SUFFICIENT NUMBER TO PROPERLY SUPPORT ALL PIPING FURNISHED AND INSTALLED. PIPING SHALL BE SUPPORTED BY ROUND WROUGHT U-TYPE APPROVED ADJUSTABLE HANGERS. PROVIDE ALL HANGERS INCLUDING TRAPEZE HANGERS AS REQUIRED TO COMPLY WITH NFPA 13. IF BAR JOIST CONSTRUCTION IS USED, HANG TO TOP CORD OF BAR JOIST ONLY. PROVIDE ANY ADDITIONAL DRAINS REQUIRED TO COMPLY WITH NFPA 13 AND LOCAL CODES WITHOUT ADDITIONAL COST TO OWNER. HANGERS HAVE NOT BEEN SHOWN FOR CLARITY.
- ALL WORK TO BE TESTED AT 200 PSI FOR 2 HOURS. TEST TO BE WITNESSED BY KANSAS CITY FIRE DEPARTMENT. CALL THE FIRE DEPARTMENT 24 HOURS IN ADVANCE TO SCHEDULE THE SPRINKLER HYDROSTATIC AND ACCEPTANCE TEST. ALL TEST TO BE PER NFPA.
- SPRINKLER PIPING TO BE RUN CONCEALED ABOVE THE FINISHED CEILING.
- CONTRACTOR IS RESPONSIBLE FOR PROVIDING AND COORDINATING THE LOCATION OF ALL INSPECTOR'S TEST VALVES. THERE SHOULD BE AT LEAST ONE INSPECTOR'S TEST CONNECTION FOR EACH ZONE AND THE PREACTION SYSTEM, DISCHARGE TEST CONNECTION TO OUTSIDE, OR OTHER ADEQUATE DRAIN. PROVIDE AND INSTALL ACCESS PANELS AS REQUIRED.
- ALL UNDERGROUND WORK SHALL BE PERFORMED IN ACCORDANCE WITH NFPA-24 REQUIREMENTS BY A STATE LICENSED CONTRACTOR. UNDERGROUND PIPE TO BE PVC DR-14 WITH MECHANICAL JOINT FITTINGS, RESTRAINED PER NFPA REQUIREMENTS. CONTRACTOR IS RESPONSIBLE TO LEAVE TO NATURAL STATE ALL AREAS AFFECTED BY EXCAVATION AND INSTALLATION OF NEW FIRE MAIN.
- ALL TRAPPED SECTIONS OF WATER TO BE PROVIDED WITH AUXILIARY DRAINS. AS REQUIRED BY NFPA-13. DRAINS TO BE 1" GLOBE VALVE WITH NIPPLE AND CAP. IF TRAPPED SECTION IS OVER 50 GAL. PIPE TO AN APPROVED LOCATION. INSTALL SIGNS AS REQUIRED, PROVIDED CAPS AT THE END OF EACH MAIN FOR FLUSHING PURPOSES.
- TAMPER SWITCHES AND FLOW SWITCHES SHALL BE CONNECTED FOR SUPERVISION AND ALARM TO THE FIRE ALARM PANEL. PROVIDE NECESSARY ELECTRICAL WIRING. CONNECTIONS FROM SWITCHES TO FIRE ALARM PANEL. THOROUGHLY REVIEW FINAL LOCATION, TYPE, MOUNTING HEIGHT AND CONTROL OF ALL DEVICES PRIOR TO ROUGH-IN.
- PROVIDE THE FOLLOWING SYSTEM DATA: PROVIDE COPY TO OWNER'S REP.
 - HAZARD CLASSIFICATION AREA OF APPLICATION - SQ. FT.
 - HYDRAULIC DESIGN DENSITY HOSE ALLOWANCES - GPM
 - HYDRAULIC DESIGN GPM/SQ. FT.
 - TOTAL SYSTEMS REQUIREMENTS - GPM AT PSI
 - HYDRAULIC DESIGN SQ. FT. HD
 - WATER SUPPLY STATIC PRESSURE - PSI
- PROVIDE TEST DATA AFTER SYSTEM INSTALLATION.
- THE FIRE PROTECTION CONTRACTOR SHALL BE RESPONSIBLE FOR COMMUNICATIONS WITH THE PROPERTY OWNER'S PERSONNEL TO REVIEW CONTRACT DOCUMENTS PRIOR TO INSTALLATION.
- IN GENERAL, PLANS AND DETAILS ARE DIAGRAMMATIC ONLY AND SHOULD NOT BE SCALED. COORDINATE ALL FIRE PROTECTION WORK WITH ELECTRICAL, PLUMBING AND HVAC WORK SO AS NOT TO CONFLICT IN LOCATION OR PERFORMANCE OF OTHER SYSTEMS.
- THE CONTRACTOR SHALL KEEP A MASTER SET OF BLUE LINE PRINTS THAT ARE TO BE MARKED UP TO REFLECT "AS BUILT" CONDITIONS ON A DAILY BASIS. THESE "AS BUILT" MARK UPS MAY BE REVIEWED BY THE ARCHITECT, ENGINEER, OR OWNER'S REPRESENTATIVE, AT THEIR REQUEST AND WITHOUT PRIOR NOTIFICATION. THESE "AS BUILT" DRAWINGS WILL BE TURNED OVER TO THE OWNER AT THE CONCLUSION OF THE PROJECT.
- THE CONTRACTOR SHALL INCLUDE ALL NECESSARY FEES AND CHARGES IN HIS BID.
- PROVIDE SPARE SPRINKLER FOR EACH SPRINKLER TYPE USED IN BUILDING QUANTITY BY NFPA 13), A SPRINKLER WRENCH AND A SPRINKLER CABINET. THE CABINET SHALL BE MOUNTED ON THE WALL ADJACENT TO THE RISER.
- FIRE ALARM PANEL FOR REMOTE MONITORING, ALARM, RESET, ETC. WILL BE LOCATED AS INDICATED. REFER TO FIRE ALARM ELECTRICAL DRAWINGS.
- PROVIDE ELECTRONIC DISC FILE FOR ID OF EVERY ITEM IN THE FIRE PROTECTION SYSTEMS INCLUDING FIRE ALARM SYSTEM.
- VALVE TYPES FOR BRANCH LINES SHALL BE SUPERVISED BALL VALVES, AND FOR THE MAINS (LARGER LINES) USE SUPERVISED OS&Y.
- CONTRACTOR SHALL OBTAIN A CURRENT 2 HYDRANT WATER FLOW TEST OR WATER MODEL DATED WITHIN (12) MONTHS FROM TIME OF SHOP DRAWING SUBMITTAL. ALL HYDRAULIC CALCULATIONS SHALL BE BASED ON THIS FLOW TEST.
- CALCULATIONS SHOULD MAINTAIN A MINIMUM 10% SPRINKLER SYSTEM SAFETY FACTOR.
- SYSTEM SHALL BE INSTALLED WITH LIGHT HAZARD CLASSIFICATION UNLESS OTHERWISE REQUIRED BY THE AHJ, NFPA, AND IBC REQUIREMENTS. SEE ARCHITECTURAL LIFE SAFETY DRAWINGS AND DETAILS FOR FURTHER BUILDING CLASSIFICATION INFORMATION.
- CONFIRM WITH LOCAL FIRE CHIEF THAT STANDPIPES ARE NOT REQUIRED FOR THIS BUILDING.
- FIRE PROTECTION CONTRACTOR SHALL FULLY PARTICIPATE IN THE BUILDING SYSTEMS COORDINATION PROCESS. THIS INCLUDES MEETING WITH THE MECHANICAL, ELECTRICAL AND PLUMBING CONTRACTORS TO DISCUSS PIPE ROUTING, EQUIPMENT LOCATIONS AND POTENTIAL AREAS OF CONFLICT. COORDINATION DRAWINGS MUST BE SUBMITTED SHOWING FIRE SPRINKLER PIPING AND SPRINKLERS FULLY COORDINATED WITH ALL OTHER TRADES. CONFLICTS THAT ARISE IN THE FIELD DURING INSTALLATION WILL BE CORRECTED AT NO ADDITIONAL COST TO THE OWNER.
- FIRE PROTECTION CONTRACTOR SHALL BE AWARE THAT DUCTWORK AND HYDRONIC PIPING TAKES PRECEDENCE OVER SPRINKLER PIPING WITH REGARDS TO ABOVE CEILING SPACE. IT IS ASSUMED THAT FOR COORDINATION PURPOSES THE BRANCH SPRINKLER PIPING CAN RUN ABOVE THE BOTTOM OF BEAMS/SJOISTS AS REQUIRED. THE CONTRACTOR SHALL BECOME FAMILAR WITH CEILING HEIGHTS, BEAM DEPTHS, AND DUCTWORK/PIPING LAYOUT PRIOR TO DRAWING FIRE SPRINKLER SHOP DRAWINGS. CEILING SPACE WITH ROOFS ABOVE ARE ESPECIALLY COMPACT AND CAREFUL ATTENTION SHOULD BE PAID TO PIPE SLOPES AND ROUTING.
- LIGHT FIXTURE LOCATIONS IN CEILINGS TAKE PRECEDENCE OVER SPRINKLER HEAD LOCATIONS. CEILING DIFFUSERS MAY BE MOVED TO AN ADJACENT TILE IF THE RELOCATION WILL ELIMINATE THE NEED FOR AN ADDITIONAL SPRINKLER HEAD WITH APPROVAL BY THE ENGINEER.
- THE KANSAS CITY FIRE DEPARTMENT SHALL WITNESS THE FULL FLOW FLUSH TEST PRIOR TO CONNECTION TO THE FIRE SPRINKLER SYSTEM.
- FIRE PROTECTION WATER ENTRY SIZE IS A MINIMUM. PIPE SIZE MAY INCREASE BASED ON SITE FLOW AND PRESSURE CONDITIONS.



ACI/Boland, Inc.
Kansas City | St. Louis
1710 Wyandotte
Kansas City, MO 64108
T: 816.763.9600
Licensee's Certificate of Authority Number:
Missouri: #000958

CIVIL CONSULTANT

BHC
7101 College Blvd. Ste. 400
Overland Park, KS 66210
913.663.1900

STRUCTURAL CONSULTANT

Bob D. Campbell & Co.
4338 Bellevue
Kansas City, MO 64111
816.531.4144

MEP CONSULTANT

BranchPattern
1508 Grand Boulevard
Kansas City, MO 64108
913.951.8311

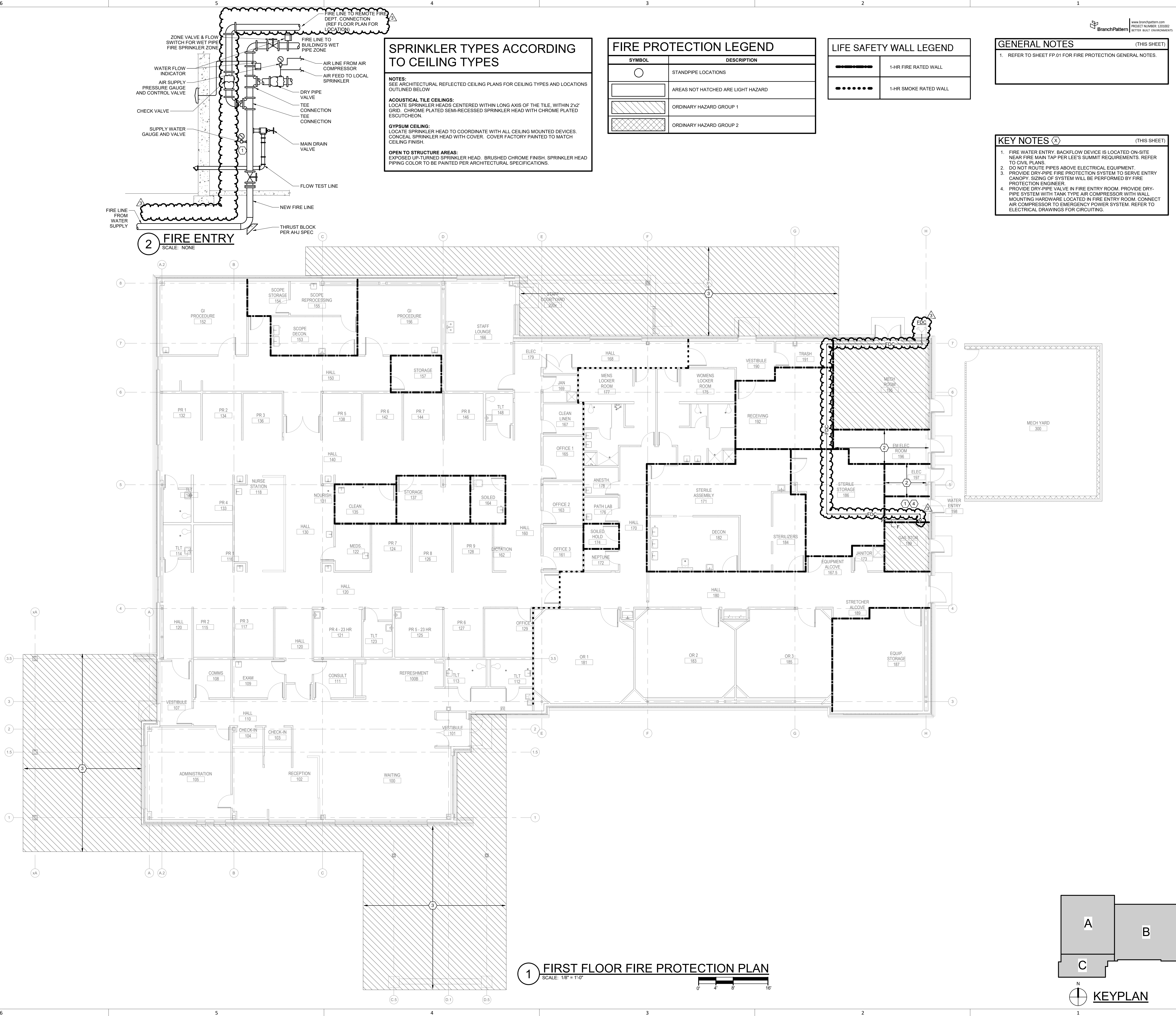
Surgery Center of Lee's Summit
1950 SE Shenandoah Drive
Lee's Summit, MO 64063

Date	2/8/2023
Job Number	3-22030
Drawn By	Author
Checked By	Checker

Revision		
Number	Date	Description
3	3/7/23	ADDENDUM #3

3/8/2023 3:52:25 PM

BIM 360://3-22030 HCA LSMC ASC/BP - HCA LSMC MEP_R21.rvt



ACI/Boland, Inc.
Kansas City | St. Louis
1710 Wyandotte
Kansas City, MO 64108
T: 816.763.9600
Licensee's Certificate of Authority Number:
Missouri: #000958

CIVIL CONSULTANT

BHC
7101 College Blvd. Ste. 400
Overland Park, KS 66210
913.663.1900

STRUCTURAL CONSULTANT

Bob D. Campbell & Co.
4338 Bellevue
Kansas City, MO 64111
816.531.4144

MEP CONSULTANT

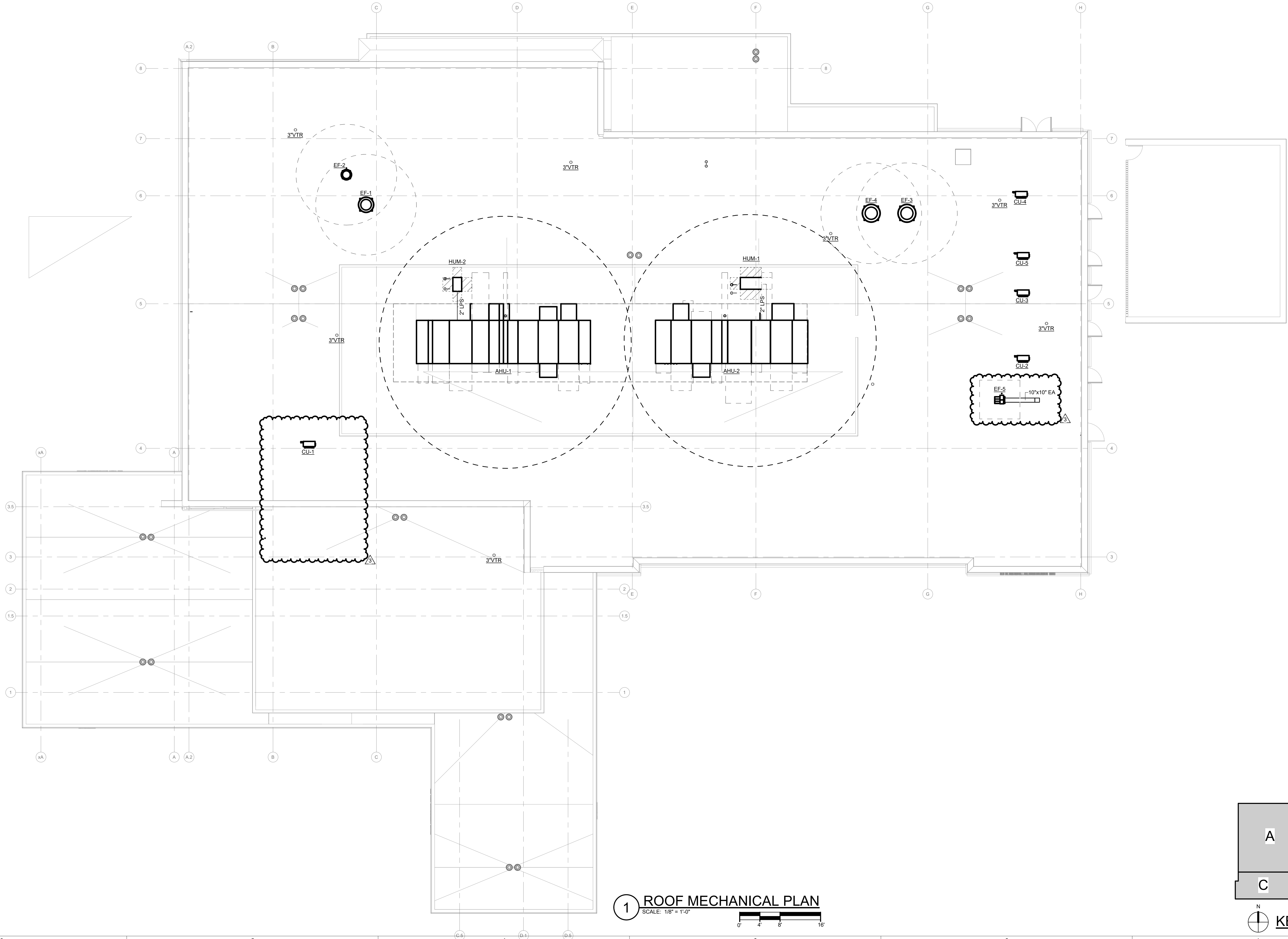
BranchPattern
1508 Grand Boulevard
Kansas City, MO 64108
913.951.8311

Surgery Center of Lee's Summit
1950 SE Shenandoah Drive
Lee's Summit, MO 64063

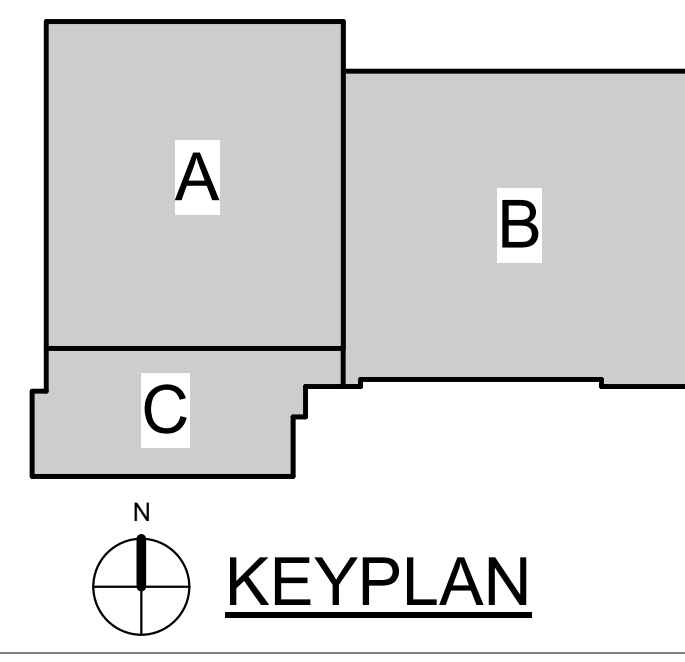
Date 2/8/2023
Job Number 3-22030
Drawn By CG
Checked By AB, RC, MG

Revision
Number Date Description
3 3/7/23 ADDENDUM #3

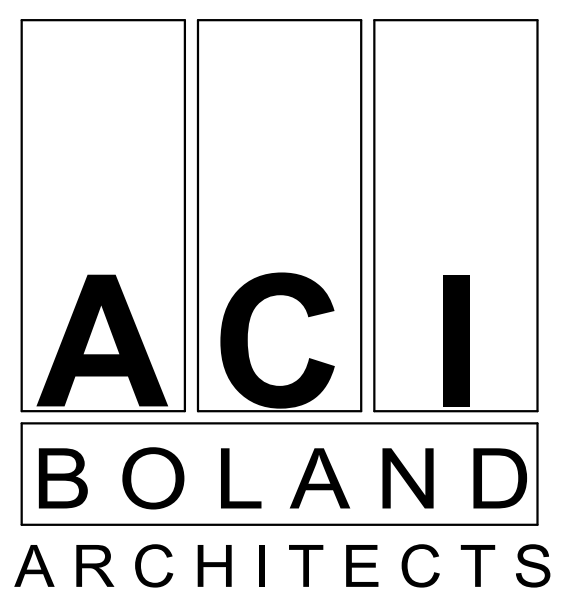
FP1.1
© 2022 ACI/BOLAND, Inc.
FIRST FLOOR FIRE PROTECTION PLAN



1 ROOF MECHANICAL PLAN
SCALE: 1/8" = 1'-0"



GENERAL NOTES (THIS SHEET)
1. SEE SHEET M0.1 AND P0.1 FOR LEGENDS AND ADDITIONAL GENERAL NOTES.



ACI/Boland, Inc.
Kansas City | St. Louis
1710 Wyandotte
Kansas City, MO 64108
T: 816.763.9600
Licensee's Certificate of Authority Number:
Missouri: #000958

CIVIL CONSULTANT
BHC
7101 College Blvd. Ste. 400
Overland Park, KS 66210
913.663.1900

STRUCTURAL CONSULTANT
Bob D. Campbell & Co.
4338 Bellevue
Kansas City, MO 64111
816.531.4144

MEP CONSULTANT
BranchPattern
1508 Grand Boulevard
Kansas City, MO 64108
913.951.8311

Surgery Center of Lee's Summit
1950 SE Shenandoah Drive
Lee's Summit, MO 64063

Date 2/8/2023
Job Number 3-22030
Drawn By Author
Checked By Checker

Revision		
Number	Date	Description
3	3/7/23	ADDENDUM #3